



Is Now Part of



**ON Semiconductor®**

To learn more about ON Semiconductor, please visit our website at  
[www.onsemi.com](http://www.onsemi.com)

ON Semiconductor and the ON Semiconductor logo are trademarks of Semiconductor Components Industries, LLC dba ON Semiconductor or its subsidiaries in the United States and/or other countries. ON Semiconductor owns the rights to a number of patents, trademarks, copyrights, trade secrets, and other intellectual property. A listing of ON Semiconductor's product/patent coverage may be accessed at [www.onsemi.com/site/pdf/Patent-Marking.pdf](http://www.onsemi.com/site/pdf/Patent-Marking.pdf). ON Semiconductor reserves the right to make changes without further notice to any products herein. ON Semiconductor makes no warranty, representation or guarantee regarding the suitability of its products for any particular purpose, nor does ON Semiconductor assume any liability arising out of the application or use of any product or circuit, and specifically disclaims any and all liability, including without limitation special, consequential or incidental damages. Buyer is responsible for its products and applications using ON Semiconductor products, including compliance with all laws, regulations and safety requirements or standards, regardless of any support or applications information provided by ON Semiconductor. "Typical" parameters which may be provided in ON Semiconductor data sheets and/or specifications can and do vary in different applications and actual performance may vary over time. All operating parameters, including "Typicals" must be validated for each customer application by customer's technical experts. ON Semiconductor does not convey any license under its patent rights nor the rights of others. ON Semiconductor products are not designed, intended, or authorized for use as a critical component in life support systems or any FDA Class 3 medical devices or medical devices with a same or similar classification in a foreign jurisdiction or any devices intended for implantation in the human body. Should Buyer purchase or use ON Semiconductor products for any such unintended or unauthorized application, Buyer shall indemnify and hold ON Semiconductor and its officers, employees, subsidiaries, affiliates, and distributors harmless against all claims, costs, damages, and expenses, and reasonable attorney fees arising out of, directly or indirectly, any claim of personal injury or death associated with such unintended or unauthorized use, even if such claim alleges that ON Semiconductor was negligent regarding the design or manufacture of the part. ON Semiconductor is an Equal Opportunity/Affirmative Action Employer. This literature is subject to all applicable copyright laws and is not for resale in any manner.

# AN-6747

## Applying FAN6747 to Control a Flyback Power Supply with Peak Current Output

### 1. Introduction

Highly integrated PWM controller, FAN6747, is optimized for applications with motor load, such as printers and scanners, that inherently impose some kind of overload condition on the power supply during acceleration mode. FAN6747 provides a two-level OCP function that allows the SMPS to stably deliver peak power during the motor acceleration without causing premature shutdown, while protecting the SMPS from overload condition.

Green-mode and burst-mode functions with a low operating current maximize the light-load efficiency so that the power supply can meet stringent standby power regulations.

The frequency-hopping function reduces electro-magnetic interference (EMI) of a power supply by spreading the energy over a wider frequency range. The constant power limit function minimizes the component stress in abnormal condition and helps optimize the power stage. Protection functions such as OCP, OLP, OVP, and OTP are fully integrated into FAN6747, which improves the SMPS reliability without increasing system cost.

This application note presents design considerations to apply FAN6747 to a flyback power supply with peak load current profile. It covers designing the transformer, selecting the components, and closing the feedback loop. Figure 1 shows a typical application circuit using FAN6747.

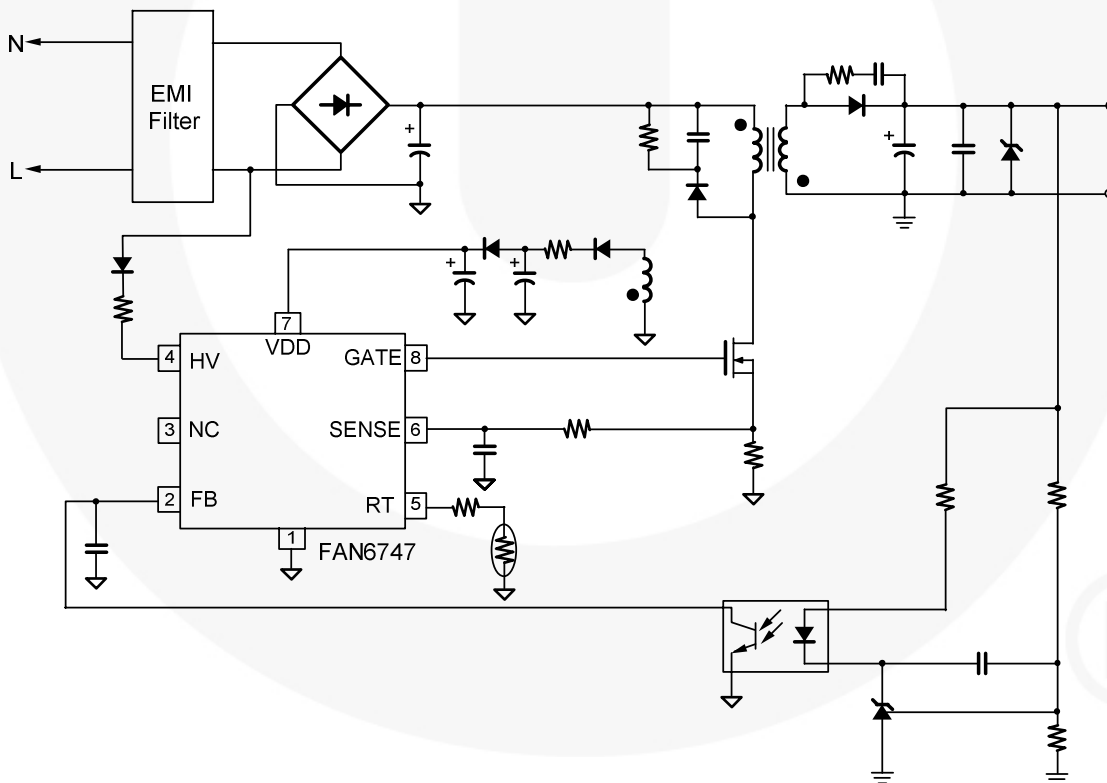


Figure 1. Typical Application

## 2. Design Considerations

Flyback converters have two operation modes; continuous conduction mode (CCM) and discontinuous conduction mode (DCM). CCM and DCM each have advantages and disadvantages. In general, DCM provides better switching conditions for the rectifier diodes, since the diodes are operating at zero current just before becoming reverse biased and the reverse recovery loss is minimized. The transformer size can be reduced using DCM because the average energy storage is low compared to CCM. However, DCM causes high RMS current, which increases the conduction loss of the MOSFET severely for low line condition. Thus, especially for applications with peak load profile, such as printer and scanner; it is typical to design the converter such that the converter operates in CCM for low line and peak load condition to maximize efficiency.

In this section, a design procedure is presented using the schematic of Figure 1 as a reference. An offline SMPS with 20W/32V nominal output power and 70W/32V peak output power has been selected as a design example.

### [STEP-1] Define the System Specifications

Designing a power supply with peak load current profile, the following specifications should be determined first:

- Line voltage range ( $V_{LINE}^{MIN}$  and  $V_{LINE}^{MAX}$ )
- Line frequency ( $f_L$ )
- Nominal output power ( $P_{NO}$ )
- Peak output power ( $P_{PO}$ ) and its duration ( $t_{PO}$ )
- Estimated efficiencies for nominal load ( $\eta_N$ ) and peak load ( $\eta_P$ ).

The power conversion efficiency must be estimated to calculate the input powers for each condition. Typically, the efficiency at peak load condition is lower than that of nominal load since most of the components of power supply are selected for nominal load condition. If no reference data is available, set  $\eta_N = 0.7\sim 0.75$  and  $\eta_P = 0.65\sim 0.7$  for low-voltage output applications and  $\eta_N = 0.8\sim 0.85$  and  $\eta_P = 0.75\sim 0.8$  for high-voltage output applications.

With the estimated efficiency, the input power for peak load condition is given by:

$$P_{INP} = \frac{P_{PO}}{\eta_P} \quad (1)$$

The input power for nominal load condition is given by:

$$P_{INN} = \frac{P_{NO}}{\eta_N} \quad (2)$$

**(Design Example)** The specifications of the target system are:

- $V_{LINE}^{MIN} = 90V_{RMS}$ ,  $V_{LINE}^{MAX} = 264V_{RMS}$
- Line frequency ( $f_L$ ) = 60Hz
- Nominal output power ( $P_{NO}$ ) = 20W (32V/0.625A)
- Peak output power ( $P_{PO}$ ) = 70W (32V/2.187A)
- Peak load duration ( $t_{PO}$ ) < 100ms
- Estimated efficiency:  $\eta_N = 0.87$  and  $\eta_P = 0.83$

$$P_{INP} = \frac{P_{PO}}{\eta_P} = \frac{70}{0.83} = 84W$$

$$P_{INN} = \frac{P_{NO}}{\eta_N} = \frac{20}{0.87} = 23W$$

FAN6747 can be used for this application because the peak load duration is less than the OCP delay time of 220ms.

### [STEP-2] Determine the Input Capacitor ( $C_{IN}$ ) and the Input Voltage Range

It is typical to select the input capacitor as 1.5~2 $\mu$ F per watt of peak input power for universal input range (85~265V<sub>RMS</sub>) and 0.7~0.8 $\mu$ F per watt of peak input power for European input range (195V~265V<sub>RMS</sub>). With the input capacitor chosen, the minimum input capacitor voltage at peak load condition is obtained as:

$$V_{INP}^{MIN} = \sqrt{2 \cdot (V_{LINE}^{MIN})^2 - \frac{P_{INP} \cdot (1 - D_{CH})}{C_{IN} \cdot f_L}} \quad (3)$$

The minimum input capacitor voltage at nominal load condition is obtained as:

$$V_{INN}^{MIN} = \sqrt{2 \cdot (V_{LINE}^{MIN})^2 - \frac{P_{INN} \cdot (1 - D_{CH})}{C_{IN} \cdot f_L}} \quad (4)$$

where  $D_{CH}$  is the input capacitor charging duty ratio defined as shown in Figure 2, which is typically about 0.2.

The maximum input capacitor voltage is given as:

$$V_{IN}^{MAX} = \sqrt{2} V_{LINE}^{MAX} \quad (5)$$

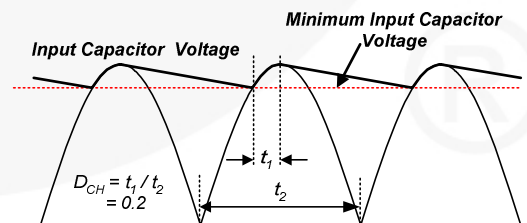


Figure 2. Input Capacitor Voltage Waveform

**(Design Example)** By choosing a 120 $\mu$ F capacitor for the input capacitor, the minimum input voltages for peak and nominal load are obtained, respectively, as:

$$V_{INP}^{MIN} = \sqrt{2 \cdot (V_{LINE}^{MIN})^2 - \frac{P_{INP} \cdot (1 - D_{CH})}{C_{IN} \cdot f_L}}$$

$$= \sqrt{2 \cdot (90)^2 - \frac{84 \cdot (1 - 0.2)}{120 \times 10^{-6} \cdot 60}} = 83V$$

$$V_{INN}^{MIN} = \sqrt{2 \cdot (V_{LINE}^{MIN})^2 - \frac{P_{INN} \cdot (1 - D_{CH})}{C_{IN} \cdot f_L}}$$

$$= \sqrt{2 \cdot (90)^2 - \frac{23 \cdot (1 - 0.2)}{120 \times 10^{-6} \cdot 60}} = 117V$$

The maximum input voltage is obtained as:

$$V_{IN}^{MAX} = \sqrt{2} \cdot V_{LINE}^{MAX} = \sqrt{2} \cdot 264 = 373V$$

### [STEP-3] Determine the Reflected Output Voltage ( $V_{RO}$ )

When the MOSFET is turned off, the input voltage ( $V_{IN}$ ), together with the output voltage reflected to the primary, ( $V_{RO}$ ) are imposed across the MOSFET, as shown in Figure 3. With a given  $V_{RO}$ , the maximum duty cycle ( $D_{MAX}$ ) and the maximum nominal MOSFET voltage ( $V_{DS}^{NOM}$ ) are obtained as:

$$D_{MAX} = \frac{V_{RO}}{V_{RO} + V_{IN}^{MIN}} \quad (6)$$

$$V_{DS}^{NOM} = V_{IN}^{MAX} + V_{RO} \quad (7)$$

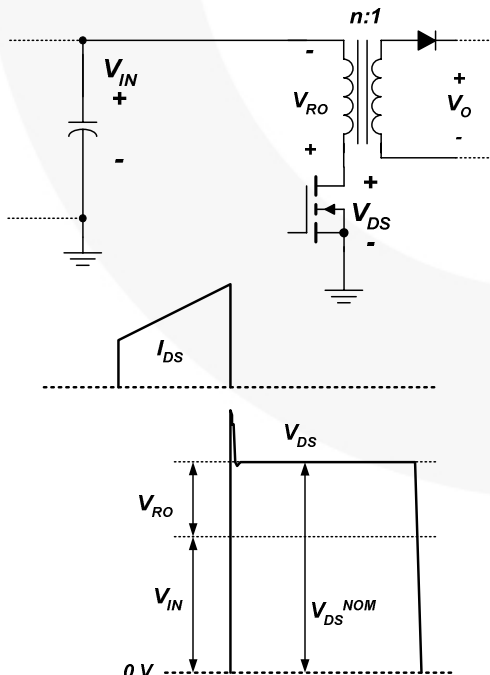


Figure 3. Output Voltage Reflected to the Primary

As can be seen in Equation (7), the voltage stress across the MOSFET can be reduced by reducing  $V_{RO}$ ; however, this increases the voltage stresses on the rectifier diodes in the secondary side. Therefore,  $V_{RO}$  should be determined by a trade-off between the voltage stresses of MOSFET and diode. Because the actual drain voltage rises above the nominal MOSFET voltage due to the leakage inductance of the transformer, as shown in Figure 3, it is typical to set  $V_{RO}$  around 70~100V so that  $V_{DS}^{NOM}$  is 430~450V for 600V MOSFET (73~78% of MOSFET voltage rating).

**(Design Example)** By determining  $V_{RO}$  as 100V:

$$D_{MAX} = \frac{V_{RO}}{V_{RO} + V_{INP}^{MIN}} = \frac{100}{100 + 83} = 0.55$$

$$V_{DS}^{NOM} = V_{IN}^{MAX} + V_{RO} = 373 + 100 = 473V$$

### [STEP-4] Determine the Transformer Primary-Side Inductance ( $L_M$ )

The transformer primary-side inductance is determined for the minimum input voltage and peak load condition. With the  $D_{MAX}$  from step 3, the primary-side inductance ( $L_M$ ) of the transformer is obtained as:

$$L_M = \frac{(V_{INP}^{MIN} \cdot D_{MAX})^2}{2P_{INP} f_{SW} K_{RF}} \quad (8)$$

where  $f_{SW}$  is the switching frequency and  $K_{RF}$  is the ripple factor at peak load and minimum input voltage condition, as shown in Figure 4.

The ripple factor is closely related to the transformer size and the RMS value of the MOSFET current. Even though the conduction loss in the MOSFET can be reduced by reducing the ripple factor, too small a ripple factor forces an increase in transformer size. From a practical point of view, it is reasonable to set  $K_{RF} = 0.3\sim 0.6$  for the universal input range and  $K_{RF} = 0.4\sim 0.8$  for the European input range.

Once  $L_M$  is calculated by determining  $K_{RF}$  from Equation (8), the peak current and RMS current of the MOSFET for minimum input voltage and peak load condition are obtained as:

$$I_{DS}^{PK} = I_{EDC} + \frac{\Delta I}{2} \quad (9)$$

$$I_{DS}^{RMS} = \sqrt{3(I_{EDC})^2 + \left(\frac{\Delta I}{2}\right)^2} \frac{D_{MAX}}{3} \quad (10)$$

where  $I_{EDC} = \frac{P_{INP}}{V_{INP}^{MIN} \cdot D_{MAX}} \quad (11)$

and  $\Delta I = \frac{V_{INP}^{MIN} D_{MAX}}{L_M f_{SW}} \quad (12)$

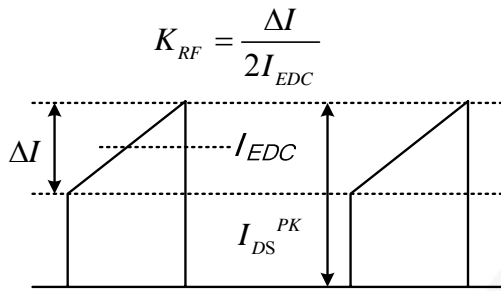


Figure 4. MOSFET Current and Ripple Factor ( $K_{RF}$ )

**(Design Example)** Determining the ripple factor as 0.375:

$$L_M = \frac{(V_{INP}^{MIN} \cdot D_{MAX})^2}{2P_{INP}f_{SW}K_{RF}} = \frac{(83 \cdot 0.55)^2}{2 \cdot 84 \cdot 65 \times 10^3 \cdot 0.375} = 508 \mu\text{H}$$

$$I_{EDC} = \frac{P_{INP}}{V_{INP}^{MIN} \cdot D_{MAX}} = \frac{84}{83 \cdot 0.55} = 1.84 \text{ A}$$

$$\Delta I = \frac{V_{INP}^{MIN} \cdot D_{MAX}}{L_M f_{SW}} = \frac{83 \cdot 0.55}{508 \times 10^{-6} \cdot 65 \times 10^3} = 1.38 \text{ A}$$

$$I_{DS}^{PK} = I_{EDC} + \frac{\Delta I}{2} = 1.84 + 0.69 = 2.53$$

$$I_{DS}^{RMS} = \sqrt{3(I_{EDC})^2 + \left(\frac{\Delta I}{2}\right)^2} \frac{D_{MAX}}{3}$$

$$= \sqrt{3(1.84)^2 + (0.69)^2} \frac{0.55}{3} = 1.4 \text{ A}$$

### [STEP-5] Determine the Sensing Resistor Value

The current sensing resistor value should be determined considering the over-current protection threshold and the pulse-by-pulse current limit threshold, as shown in Figure 5. The peak value of current sensing voltage ( $V_{CS}$ ) should be lower than the pulse-by-pulse current limit level for peak load condition. It should be lower than the OCP threshold for nominal load conditions to prevent false triggering of OCP protection during normal operation.

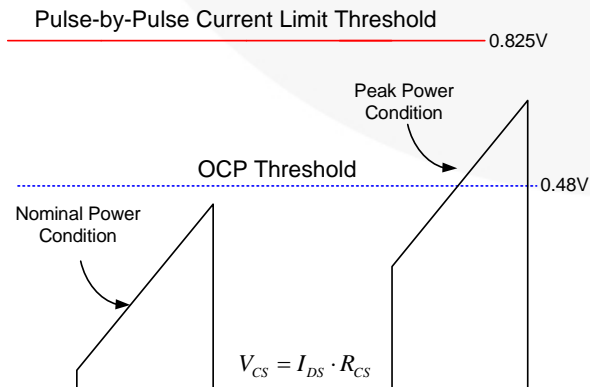


Figure 5. Determining Current Sensing Resistor

The peak drain current at minimum input voltage and peak load condition was obtained from Equation (9) in step 4. The peak drain current at minimum input voltage and nominal load condition is given as:

CCM:

$$I_{DS,N}^{PK} = \frac{P_{INN} \cdot (V_{IN}^{MIN} + V_{RO})}{V_{IN}^{MIN} \cdot V_{RO}} + \frac{V_{IN}^{MIN} \cdot V_{RO}}{2L_M f_{SW} \cdot (V_{IN}^{MIN} + V_{RO})} \quad (13)$$

DCM:

$$I_{DS,N}^{PK} = \sqrt{\frac{2 \cdot P_{INN}}{f_{SW} \cdot L_M}} \quad (14)$$

Whether the converter operates in CCM or DCM at minimum input voltage and nominal load condition is determined by:

$$\text{CCM: } \sqrt{2P_{INN}L_M f_{SW}} \cdot \frac{(V_{IN}^{MIN} + V_{RO})}{V_{IN}^{MIN} \cdot V_{RO}} > 1 \quad (15)$$

$$\text{DCM: } \sqrt{2P_{INN}L_M f_{SW}} \cdot \frac{(V_{IN}^{MIN} + V_{RO})}{V_{IN}^{MIN} \cdot V_{RO}} < 1 \quad (16)$$

The condition for the sensing resistor is given as:

$$R_{CS} < \frac{0.48}{I_{DS,N}^{PK}} \quad (17)$$

$$R_{CS} < \frac{0.825}{I_{DS,N}^{PK}} \quad (18)$$

**(Design Example)** For minimum input voltage and nominal load condition, the operation mode is DCM as:

$$\sqrt{2P_{INN}L_M f_{SW}} \cdot \frac{(V_{IN}^{MIN} + V_{RO})}{V_{IN}^{MIN} \cdot V_{RO}} = \sqrt{2 \cdot 23 \cdot 508 \times 10^{-6} \cdot 65 \times 10^3} \cdot \frac{(117 + 100)}{117 \cdot 100} < 1$$

The peak drain current at minimum input voltage and nominal power condition is given as:

$$I_{DS,N}^{PK} = \sqrt{\frac{2 \cdot P_{INN}}{f_{SW} \cdot L_M}} = \sqrt{\frac{2 \cdot 23}{65 \times 10^3 \cdot 508 \times 10^{-6}}} = 1.18 \text{ A}$$

The conditions for the sensing resistor are given as:

$$R_{CS} < \frac{0.48}{I_{DS,N}^{PK}} = \frac{0.48}{1.18} = 0.41 \Omega$$

$$R_{CS} < \frac{0.825}{I_{DS,P}^{PK}} = \frac{0.825}{2.53} = 0.33 \Omega$$

A 0.33Ω resistor is selected for the current-sensing resistor.

### [STEP-6] Determine the Minimum Primary Turns

With a given core, the minimum number of turns for the transformer primary side to avoid the core saturation is given by:

$$N_P^{\text{MIN}} = \frac{L_M I_{\text{LIM}}}{B_{\text{SAT}} A_e} \times 10^6 = \frac{L_M \cdot 0.825 / R_{\text{CS}}}{B_{\text{SAT}} A_e} \times 10^6 \quad (19)$$

where  $A_e$  is the cross-sectional area of the core in  $\text{mm}^2$ ,  $I_{\text{LIM}}$  is the pulse-by-pulse current limit level determined by 0.825V threshold,  $R_{\text{CS}}$  is current sensing resistor, and  $B_{\text{SAT}}$  is the saturation flux density in Tesla.

The pulse-by-pulse current limit level is included in Equation (19) because the inductor current reaches the pulse-by-pulse current limit level during the load transient or overload condition. Figure 6 shows the typical characteristics of ferrite core from TDK (PC40). Since the saturation flux density ( $B_{\text{SAT}}$ ) decreases as the temperature rises, the high-temperature characteristics should be considered. If there is no reference data, use  $B_{\text{MAX}}=0.3\text{T}$ .

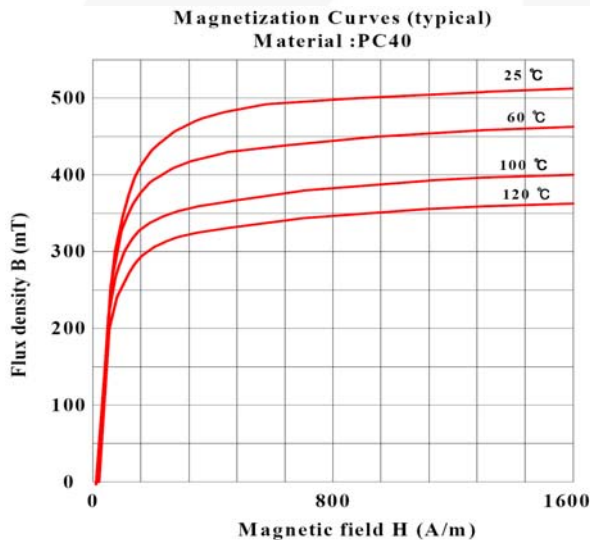


Figure 6. Typical B-H Characteristics of Ferrite Core (TDK/PC40)

**(Design Example)** An EF25/13/11 core is selected with effective cross-sectional area of  $78\text{mm}^2$ . Choosing the saturation flux density as  $0.27\text{T}$ , the minimum number of turns for the primary side is obtained as:

$$N_P^{\text{MIN}} = \frac{L_M \cdot 0.825 / R_{\text{CS}}}{B_{\text{SAT}} A_e} \times 10^6 = \frac{508 \times 10^{-6} \cdot 0.825 / 0.33}{0.27 \cdot 78} \times 10^6 = 60$$

### [STEP-7] Determine the Number of Turns for Each Winding

Figure 7 shows a simplified diagram of the transformer. First, calculate the turn ratio ( $n$ ) between the primary side and the secondary side from the reflected output voltage determined in step 3 as:

$$n = \frac{N_P}{N_S} = \frac{V_{\text{RO}}}{V_O + V_F} \quad (20)$$

where  $N_P$  and  $N_S$  are the number of turns for primary side and secondary side, respectively,  $V_O$  is the output voltage; and  $V_F$  is the diode ( $D_O$ ) forward-voltage drop.

Determine the proper integer for  $N_S$  such that the resulting  $N_P$  is larger than  $N_P^{\text{min}}$  obtained from Equation (19).

The number of turns for the auxiliary winding for  $V_{\text{DD}}$  supply is determined as:

$$N_A = \frac{V_{\text{DD}}^* + V_{\text{FA}}}{V_O + V_F} \cdot N_S \quad (21)$$

where  $V_{\text{DD}}$  is the nominal value of the supply voltage and  $V_{\text{FA}}$  is the forward-voltage drop of  $D_{\text{DD}}$  as defined in Figure 7. Since  $V_{\text{DD}}$  increases as the output load increases, it is proper to set  $V_{\text{DD}}$  at 3~5V higher than  $V_{\text{DD}}$  UVLO level (9V) to avoid the over-voltage protection condition during the peak load operation.

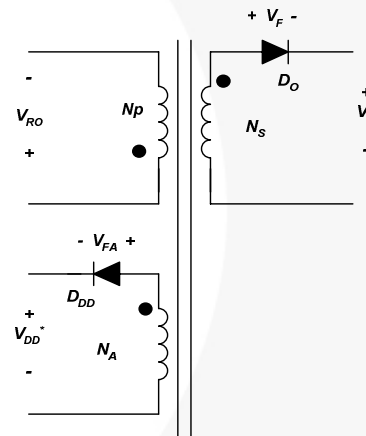


Figure 7. Simplified Transformer Diagram

**(Design Example)** Assuming the diode forward-voltage drop is 1V, the turn ratio is obtained as:

$$n = \frac{N_P}{N_S} = \frac{V_{\text{RO}}}{V_O + V_F} = \frac{100}{32 + 1} = 3.03$$

Then, determine the proper integer for  $N_S$  such that the resulting  $N_P$  is larger than  $N_P^{\text{min}}$  as:

$$N_S = 20, N_P = n \cdot N_S = 61 > N_P^{\text{MIN}}$$

Setting  $V_{\text{DD}}^*$  as 13V, the number of turns for the auxiliary winding is obtained as:

$$N_A = \frac{V_{\text{DD}}^* + V_{\text{FA}}}{V_O + V_F} \cdot N_S = \frac{13 + 1}{32 + 1} \cdot 20 = 9$$

### [STEP-8] Determine the Wire Diameter for Each Winding Based on the RMS Current of Winding

The maximum RMS current of the secondary winding is obtained as:

$$I_{\text{SEC}}^{\text{RMS}} = n \cdot I_{\text{DS}}^{\text{RMS}} \sqrt{\frac{1 - D_{\text{MAX}}}{D_{\text{MAX}}}} \quad (22)$$

The current density is typically 6~10A/mm<sup>2</sup> when the wire is long (>1m). When the wire is short with a small number of turns, a current density of 8~14A/mm<sup>2</sup> is also acceptable. These current densities are based on the peak load condition and therefore almost twice conventional power supply design. Avoid using wire with a diameter larger than 1mm to avoid severe eddy current losses and to make winding easier. For high current output, use parallel windings with multiple strands of thinner wire to minimize skin effect.

**(Design Example)** The RMS current of the primary-side winding is obtained from step 4 as 1.4A. The RMS current of the secondary-side winding is calculated as:

$$I_{\text{SEC}}^{\text{RMS}} = n \cdot I_{\text{DS}}^{\text{RMS}} \sqrt{\frac{1 - D_{\text{MAX}}}{D_{\text{MAX}}}}$$

$$= 3.03 \cdot 1.4 \sqrt{\frac{1 - 0.55}{0.55}} = 3.84 \text{ A}$$

0.45mm (8A/mm<sup>2</sup>) and 0.55mm (12A/mm<sup>2</sup>) diameter wires are selected for primary and secondary windings, respectively.

### [STEP-9] Choose the Rectifier Diode in the Secondary-Side Based on Voltage and Current Ratings

The maximum reverse voltage and the RMS current of the rectifier diode are obtained as:

$$V_{\text{DO}} = V_{\text{O}} + \frac{V_{\text{IN}}^{\text{MAX}}}{n} \quad (23)$$

$$I_{\text{DO}}^{\text{RMS}} = n \cdot I_{\text{DS}}^{\text{RMS}} \sqrt{\frac{1 - D_{\text{MAX}}}{D_{\text{MAX}}}} \quad (24)$$

The typical voltage and current margins for the rectifier diode are:

$$V_{\text{RRM}} > 1.3 \cdot V_{\text{DO}} \quad (25)$$

$$I_{\text{F}} > 1.5 \cdot I_{\text{DO}}^{\text{RMS}} \quad (26)$$

where  $V_{\text{RRM}}$  is the maximum reverse voltage and  $I_{\text{F}}$  is the current rating of the diode.

**(Design Example)** The diode voltage and current are calculated as:

$$V_{\text{DO}} = V_{\text{O}} + \frac{V_{\text{IN}}^{\text{MAX}}}{n} = 32 + \frac{373}{3.03} = 155 \text{ V}$$

$$I_{\text{DO}}^{\text{RMS}} = n \cdot I_{\text{DS}}^{\text{RMS}} \sqrt{\frac{1 - D_{\text{MAX}}}{D_{\text{MAX}}}}$$

$$= 3.03 \cdot 1.4 \sqrt{\frac{1 - 0.55}{0.55}} = 3.84 \text{ A}$$

10A and 200V diode is selected, assuming a very small heat-sink is used for the diode.

### [STEP-10] Feedback Circuit Configuration

The FAN6747 employs peak-current-mode control, as shown in Figure 8. A current-to-voltage conversion is accomplished externally with current-sense resistor  $R_{\text{CS}}$ . Under normal operation, the FB level controls the peak inductor current as:

$$I_{\text{DS}} \cdot R_{\text{CS}} + V_{\text{SLOPE}} = I_{\text{DS}} \cdot R_{\text{CS}} + 0.35 \cdot D = \frac{V_{\text{FB}} - 0.6}{4} \quad (27)$$

where  $V_{\text{FB}}$  is the voltage of FB pin,  $V_{\text{SLOPE}}$  is synchronized positive-going ramp, and  $D$  is duty cycle ratio.

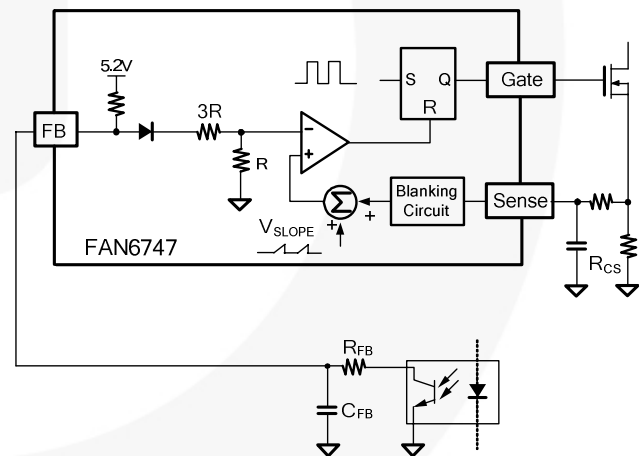


Figure 8. Peak Current Mode Circuit

Figure 9 is a typical feedback circuit mainly consisting of a shunt regulator and a photo-coupler.  $R_1$  and  $R_2$  form a voltage divider for output voltage regulation.  $R_{\text{F}}$  and  $C_{\text{F}}$  are adjusted for control-loop compensation. A small-value RC filter (e.g.  $R_{\text{FB}} = 100\Omega$ ,  $C_{\text{FB}} = 1\text{nF}$ ) placed from the FB pin to GND can increase stability substantially. The maximum source current of the FB pin is about 325 $\mu\text{A}$ . The phototransistor must be capable of sinking this current to pull the FB level down at no load. The value of the biasing resistor,  $R_{\text{BIAS}}$ , is determined as:





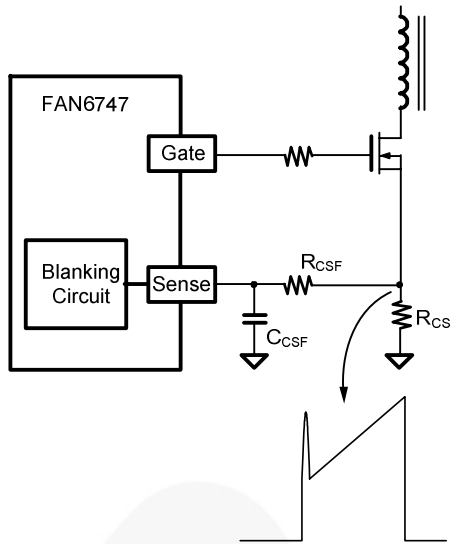


Figure 11. Current Sensing

**Thermal Protection**

Figure 12 shows the internal blocks for thermal protection. A constant current,  $I_{RT}$ , of  $100\mu A$  is provided from the RT pin. For over-temperature protection, an NTC thermistor in series with a resistor can be connected between the RT and GND pins. As temperature increases, the impedance of

NTC thermistor decreases and RT pin voltage drops. When the voltage of the RT pin is less than 1.05V but over 0.7V, the PWM turns off after 16ms ( $t_{D\_OTP\_LATCH}$ ). When RT pin voltage is less than 0.7V, OTP is triggered after the  $185\mu s$  ( $t_{D\_OTP2\_LATCH}$ ) debounce time.

If the RT pin is not connected to the NTC resistor for over-temperature protection, a 100KW resistor to ground to prevent noise interference is recommended. This pin is limited by the internal clamping circuit.

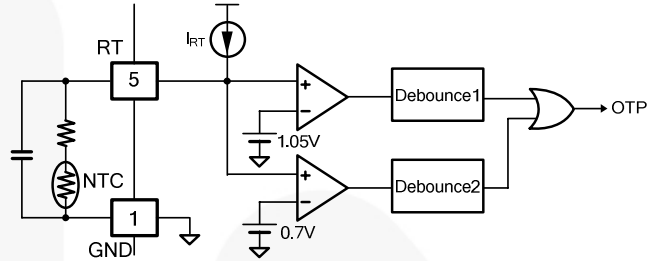


Figure 12. Thermal Protection Circuit



## Design Summary

Figure 14 shows the final schematic of the 20W (70W peak) power supply of the design example.

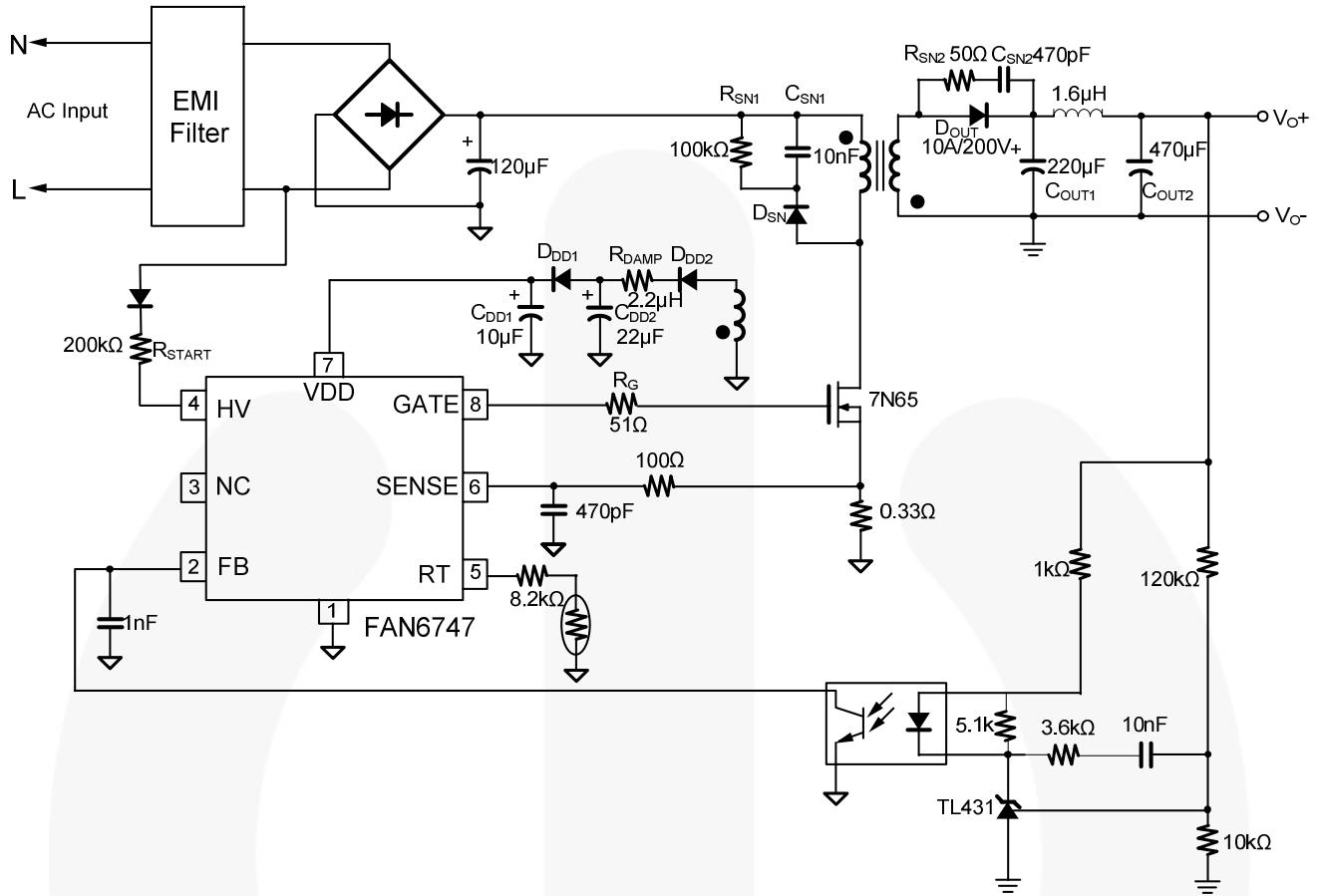


Figure 14. Final Schematic of Design Example

### Transformer Specification

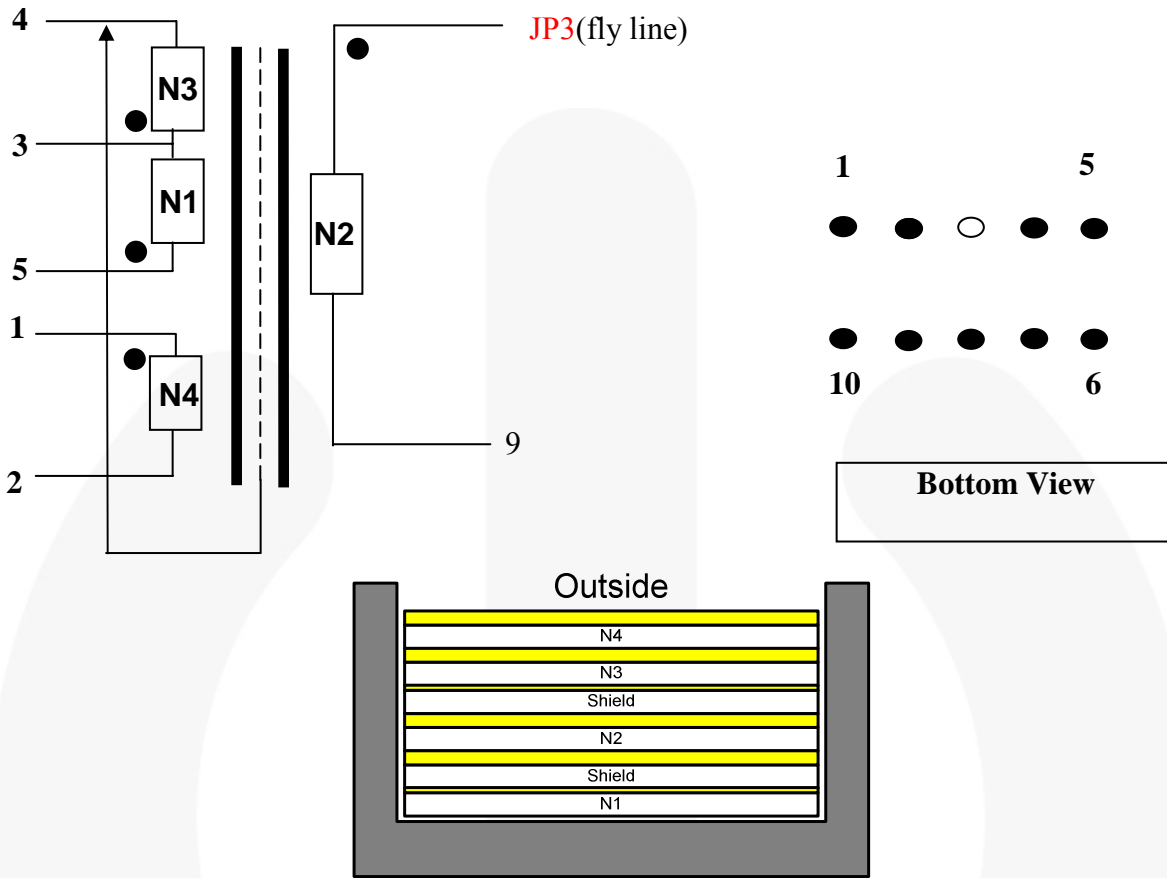


Figure 15. Transformer Specification

### Winding Specification

	Pin	Diameter / Thickness	Turns
N1	5 → 3	0.45mm	30
Insulation Tape			3
Shielding Lead to Pin 4			65
Insulation Tape			3
N2	JP3 → 9	0.55mm	20
Insulation Tape			3
Shielding Lead to Pin 4			65
Insulation Tape			3
N3	3 → 4	0.45mm	30
Insulation Tape			6
N4	1 → 2	0.2mm	9
Insulation Tape			3

Core: EF25/13/11 ( $A_e=78 \text{ mm}^2$ )

Bobbin: EF25/13/11

Inductance: 508 $\mu$ H

## Related Datasheets

[\*FAN6747 — Highly Integrated Green-Mode PWM Controller for Peak Power Management\*](#)

---

### DISCLAIMER

FAIRCHILD SEMICONDUCTOR RESERVES THE RIGHT TO MAKE CHANGES WITHOUT FURTHER NOTICE TO ANY PRODUCTS HEREIN TO IMPROVE RELIABILITY, FUNCTION, OR DESIGN. FAIRCHILD DOES NOT ASSUME ANY LIABILITY ARISING OUT OF THE APPLICATION OR USE OF ANY PRODUCT OR CIRCUIT DESCRIBED HEREIN; NEITHER DOES IT CONVEY ANY LICENSE UNDER ITS PATENT RIGHTS, NOR THE RIGHTS OF OTHERS.

### LIFE SUPPORT POLICY

FAIRCHILD'S PRODUCTS ARE NOT AUTHORIZED FOR USE AS CRITICAL COMPONENTS IN LIFE SUPPORT DEVICES OR SYSTEMS WITHOUT THE EXPRESS WRITTEN APPROVAL OF THE PRESIDENT OF FAIRCHILD SEMICONDUCTOR CORPORATION.

As used herein:

1. Life support devices or systems are devices or systems which, (a) are intended for surgical implant into the body, or (b) support or sustain life, or (c) whose failure to perform when properly used in accordance with instructions for use provided in the labeling, can be reasonably expected to result in significant injury to the user.
2. A critical component is any component of a life support device or system whose failure to perform can be reasonably expected to cause the failure of the life support device or system, or to affect its safety or effectiveness.

ON Semiconductor and  are trademarks of Semiconductor Components Industries, LLC dba ON Semiconductor or its subsidiaries in the United States and/or other countries. ON Semiconductor owns the rights to a number of patents, trademarks, copyrights, trade secrets, and other intellectual property. A listing of ON Semiconductor's product/patent coverage may be accessed at [www.onsemi.com/site/pdf/Patent-Marking.pdf](http://www.onsemi.com/site/pdf/Patent-Marking.pdf). ON Semiconductor reserves the right to make changes without further notice to any products herein. ON Semiconductor makes no warranty, representation or guarantee regarding the suitability of its products for any particular purpose, nor does ON Semiconductor assume any liability arising out of the application or use of any product or circuit, and specifically disclaims any and all liability, including without limitation special, consequential or incidental damages. Buyer is responsible for its products and applications using ON Semiconductor products, including compliance with all laws, regulations and safety requirements or standards, regardless of any support or applications information provided by ON Semiconductor. "Typical" parameters which may be provided in ON Semiconductor data sheets and/or specifications can and do vary in different applications and actual performance may vary over time. All operating parameters, including "Typicals" must be validated for each customer application by customer's technical experts. ON Semiconductor does not convey any license under its patent rights nor the rights of others. ON Semiconductor products are not designed, intended, or authorized for use as a critical component in life support systems or any FDA Class 3 medical devices or medical devices with a same or similar classification in a foreign jurisdiction or any devices intended for implantation in the human body. Should Buyer purchase or use ON Semiconductor products for any such unintended or unauthorized application, Buyer shall indemnify and hold ON Semiconductor and its officers, employees, subsidiaries, affiliates, and distributors harmless against all claims, costs, damages, and expenses, and reasonable attorney fees arising out of, directly or indirectly, any claim of personal injury or death associated with such unintended or unauthorized use, even if such claim alleges that ON Semiconductor was negligent regarding the design or manufacture of the part. ON Semiconductor is an Equal Opportunity/Affirmative Action Employer. This literature is subject to all applicable copyright laws and is not for resale in any manner.

## PUBLICATION ORDERING INFORMATION

### LITERATURE FULFILLMENT:

Literature Distribution Center for ON Semiconductor  
19521 E. 32nd Pkwy, Aurora, Colorado 80011 USA  
**Phone:** 303-675-2175 or 800-344-3860 Toll Free USA/Canada  
**Fax:** 303-675-2176 or 800-344-3867 Toll Free USA/Canada  
**Email:** [orderlit@onsemi.com](mailto:orderlit@onsemi.com)

**N. American Technical Support:** 800-282-9855 Toll Free  
USA/Canada  
**Europe, Middle East and Africa Technical Support:**  
Phone: 421 33 790 2910  
**Japan Customer Focus Center**  
Phone: 81-3-5817-1050

**ON Semiconductor Website:** [www.onsemi.com](http://www.onsemi.com)  
**Order Literature:** <http://www.onsemi.com/orderlit>  
For additional information, please contact your local  
Sales Representative