

# Handling and Soldering of onsemi TSV Packaged SiPM Sensors

## AND9793/D

### INTRODUCTION

This document contains information on the handling, storage and soldering of the onsemi TSV (through silicon via) packaged sensors.

This document applies to the following sensors:

- MicroFJ-XXXXX-TSV

where the Xs represent numerals in the part number.

Please discuss the contents of this document with your contract manufacturer.

### ADDITIONAL APPLICABLE DOCUMENTS

- IPC/JEDEC J-STD-020
- IPC/JEDEC J-STD-033

### THE TSV PACKAGE

The TSV package is fabricated while the die are still on the wafer. A glass substrate is bonded to the top of the silicon wafer and the silicon is back-ground to a thin layer (<0.10 mm). Contact vias are etched in the silicon, oxide is deposited to isolate the substrate from further processing, and metal is deposited to form a contact layer with the output terminals of the SiPM. Solder bumps are then attached to the deposited metal on the back side of the sensor. The wafer is finally sawn into individual die. The TSV concept is shown in Figure 1.

The glass surface of the SiPM is delicate and care must be taken to avoid any impact or contact with abrasive or sharp materials. Because the die is so close to the edge of the package, even seemingly minor damage at the glass edge may affect sensor operation.

### SAFE HANDLING OF SENSORS

onsemi SiPM sensors undergo 100% electrical test and automatic visual inspection at end of line, immediately prior to shipment on tape and reel. Therefore all onsemi sensors should reach the customer in perfect condition. To ensure that the sensors remain in this condition, please note the following guidance.

- Remember that the SiPM is a sensitive optoelectronic sensor and should always be handled as carefully as possible.
- Physical contact with the sensor should be minimized during assembly, and onsemi recommends the use of automatic assembly directly from reels.
- In particular, care should be taken to avoid contact with abrasive materials.
- When unpacking, care should be taken to prevent dropping or misorienting the sensors.
- SiPM sensors are ESD sensitive. Please note the precautions given in JESD625.

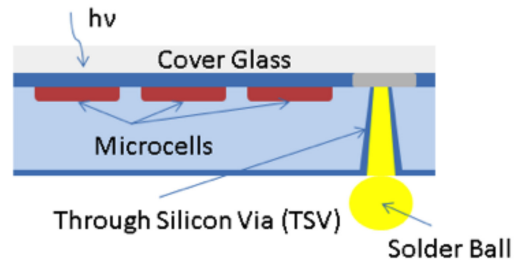
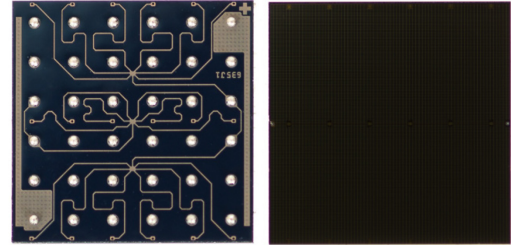


Figure 1. The onsemi TSV Packaged SiPM Sensor (Top) and the TSV Concept (Bottom)

Please be sure to identify correct device orientation and communicate the correct device orientation to your CM. Gerber file standard with pick and place file or similar should be used to communicate the correct rotation for these polarized devices. A manual check should always be carried out in conjunction with the CM to ensure correct rotation before proceeding with a volume build.

## AND9793/D

- Assembled units should be carefully packaged following assembly, to prevent damage to the sensor optical surface and the sensor edges. The most common problem that arises with TSV sensors is damage due to lack of handling precautions during assembly and transport.
- The sensor should be disconnected from the bias supply when not in use.
- Particular care should be taken when coupling and decoupling scintillation crystals. Please follow the advice in this [Application Note](#).

### STORAGE CONDITIONS

These sensors are moisture sensitive. If not stored correctly moisture can diffuse into the package from atmospheric humidity. Surface mount soldering of the TSV packages to PCB exposes the entire package body to temperatures up to 260°C. Rapid expansion of any trapped moisture during this process could result in package cracking or delamination of critical interfaces within the package.

To avoid this, parts are shipped in moisture barrier bags (MBBs) according to the J-STD-033 standard. Unopened MBBs should be stored at a temperature below 40°C with relative humidity <90%. After the MBB has been opened,

the devices must be reflow soldered within a period of time depending upon the moisture sensitivity level (MSL), which is indicated on the packaging. **onsemi** TSV parts on Tape & Reel are MSL 3 (see Table 1 for details).

The parts must also be baked (according to J-STD-033, table 4.1) if any of the following occurs:

- The parts are not reflow soldered within the applicable exposure time of opening the MBB (see Table 1).
- The MBB is expired (according to the packing date and shelf life on the label).
- The humidity indicator card (HIC) shows the moisture level within the MBB has increased beyond the required level.
- The parts are shipped with a bake instruction note.

### REBAKE CONDITIONS

If any of the conditions above occurs then a rebake is required, according to J-STD-033, table 4.1. The information in Table 2, below, should also be taken into account. Please discuss this with your contract manufacturer for their recommended baking cycle which adheres to IPC/JEDEC J-STD-20 MSL Classification. Note the temperature of the bake should not exceed the recommended product storage temperature listed in product's datasheet.

**Table 1. MSL DEFINITIONS APPLICABLE TO onsemi TSV PARTS (REFERENCE J-STD-20)**

TSV Shipping Format	MSL	Exposure Time	Condition	Calculated Shelf Life in Sealed Bags*	Peak Package Body Temperature
Tape and reel	3	168 hours	≤ 30°C/60% RH	24 months (< 40°C and < 90% RH)	260°C
Cut tape and partial reels	4	72 hours	≤ 30°C/60% RH	12 months (< 40°C and < 90% RH)	260°C
Gel pack or waffle pack	N/A	Indefinite	Always follow the rebake instruction for >72hrs	N/A	N/A

\*Calculated shelf life is based on the packing date at the manufacturer. This 'bag seal date' is displayed on the reel's Moisture Sensitivity Label, which is located on the packaging. **onsemi** guarantees that reels will ship with a minimum of 3 months left before the expiry date of the MBB (according to the packing date and shelf life on the label).

**Table 2. REBAKE PROCEDURES FOR TSV DEVICES ON TAPE, AND NOT ON TAPE**

Condition	Rebake Procedure if the Exposure Time Exceeds the Floor Life Expectation by...	
	> 72 hours	< 72 hours
Not on tape	33 hours at 90°C	23 hours at 90°C
On tape	13 days at 40°C	9 days at 40°C

## GENERAL ASSEMBLY ADVICE

- The most common problem that arises with TSV sensors is damage due to lack of handling precautions during handling, assembly and transport.
- Contract manufacturers should be given a copy of this document in order to implement the necessary precautions when assembling the parts.
- Physical contact with the sensor should be minimized during assembly and **onsemi** recommends the use of automatic assembly directly from reels. Contact with the light-sensitive surface, which is glass, should be avoided. In particular, care should be taken to avoid contact with abrasive materials.
- The sensors can be damaged during unpacking or placement steps. A magnified visual inspection step immediately prior to reflow can identify problems due to placement such as sensor edge damage or sensor misalignment.
- If a volume build is being assembled then an initial trial build on one board or a small quantity is recommended. Any trial boards should be thoroughly tested before proceeding to ensure a successful volume build. This is especially important when creating arrays of the TSV sensors.
- SiPM sensors are polarized. Ensure correct orientation during placement. Topside orientation features on TSV are visible under magnification. Note that the orientation fiducial for all J-Series sensors (3 mm, 4 mm and 6 mm) is not a pin 1 indicator and is on the opposite side of the chip next to balls C3 (3 mm), C4 (4mm) and F6 (6mm). Please refer to the CAD files which are linked to on the final page of this document.
- The parts come on tape and reel and are orientated consistently on the tape as per the CAD. Links to the CAD files can be found on the final page of this document. It is important to communicate the correct sensor orientation in the Gerber and assembly files to the contract manufacturer. A manual check should always be carried out in conjunction with CM to ensure correct rotation before proceeding with a volume build.
- If the TSV part is being assembled into an array, the advice in the [Array Design Application Note](#) should be followed.

## BOARD LAYOUT CONSIDERATIONS

- Example solder footprints and product specific soldering recommendations are provided for guidance in the relevant product CAD files. Links to CAD files are on the final page of this document.
- To ensure correct sensor orientation please consult the CAD drawings where orientation fiducials are clearly indicated. A manual visual check between placement and assembly is recommended to ensure correct orientation.
- All solder bumps, including those for fast output and NC (No Connect) should be soldered to the PCB. This is for mechanical stability and alignment as well as for optimal thermal performance.
- Where there are 2 pins per signal, connect both pins together on the PCB. This helps reduce series resistance and give optimal performance.
- The NC pins can be soldered to a plane to help heat dissipation (these are floating in the sensor package)
- To prevent unexpected problems please also be aware that the PCB pads should be made as uniform as possible. The final pad produced by intersection of metal and soldermask layers should be consistent in terms of area with all other pads. Ensuring this will prevent stress due to components tilting during reflow, and in the case of an array will result in a planar optical surface.

## SOLDER REFLOW CONDITIONS

The TSV package is compatible with standard reflow solder processes (J-STD-20) and so is ideal for high-volume manufacturing.

Solder paste (**onsemi** recommends using no-clean solder paste) must be evenly applied to each solder pad to ensure proper bonding and positioning of the component. Consult with the contract manufacturer regarding the best solder stencil design for your PCB.

Suggested solder stencil for TSV BGA package:

- Cu Pad to stencil aperture ratio 1:1
- Stencil foil thickness 100 µm

Solder reflow conditions must be in compliance with J-STD-20, table 5.2. This is summarized in Figure 2. The number of passes should not be more than 2. After soldering, allow at least three minutes for the component to cool to room temperature before further operations.

# AND9793/D

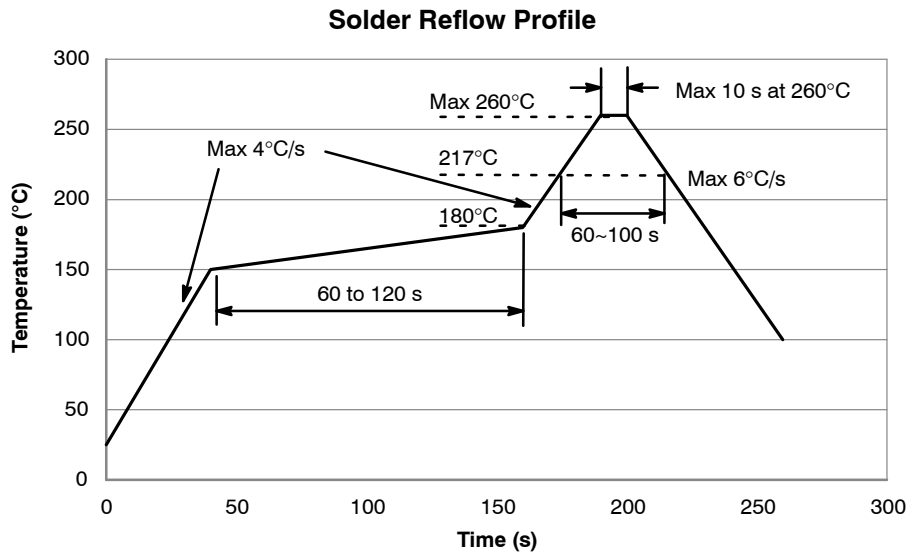


Figure 2. Solder Reflow Profile

## CLEANING

Isopropyl alcohol (propan-2-ol) in concentrated form can be used for cleaning the TSV devices.

It is important to allow the PCB to cool to room temperature after reflow and before flux cleaning in order to avoid thermal shock.

## REWORK OF THE TSV PACKAGES

Manual rework of TSV packages after reflow soldering is not recommended. Manual removal of surface mount components from a PCB involves heating to temperatures above 250°C for long periods (>60 seconds) with minimal process controls. Such treatment may result in internal damage to the package and may impact performance and reliability.

It is possible to remove, discard and replace components where the packing density of devices is sufficiently low to

prevent excessive heating of adjacent components during removal of the component of interest. Rework of densely packed components (such as an array) can be achieved using semi-automated equipment such as Metcal APR-5000. Such equipment enables control of the reflow profile and removal of the component using a vacuum collet.

## PACKAGE DRAWING AND SOLDER FOOTPRINTS

Package drawings for each MicroFJ product can be found in the [J-Series](#) datasheet. The datasheet also hosts a link to the full mechanical case outline file for each product variant, which contains the recommended solder mounting footprint.

SensL is a registered trademark of Semiconductor Components Industries, LLC dba "onsemi" or its affiliates and/or subsidiaries in the United States and/or other countries.

onsemi, Onsemi, and other names, marks, and brands are registered and/or common law trademarks of Semiconductor Components Industries, LLC dba "onsemi" or its affiliates and/or subsidiaries in the United States and/or other countries. onsemi owns the rights to a number of patents, trademarks, copyrights, trade secrets, and other intellectual property. A listing of onsemi's product/patent coverage may be accessed at [www.onsemi.com/site/pdf/Patent-Marking.pdf](http://www.onsemi.com/site/pdf/Patent-Marking.pdf). onsemi reserves the right to make changes at any time to any products or information herein, without notice. The information herein is provided "as-is" and onsemi makes no warranty, representation or guarantee regarding the accuracy of the information, product features, availability, functionality, or suitability of its products for any particular purpose, nor does onsemi assume any liability arising out of the application or use of any product or circuit, and specifically disclaims any and all liability, including without limitation special, consequential or incidental damages. Buyer is responsible for its products and applications using onsemi products, including compliance with all laws, regulations and safety requirements or standards, regardless of any support or applications information provided by onsemi. "Typical" parameters which may be provided in onsemi data sheets and/or specifications can and do vary in different applications and actual performance may vary over time. All operating parameters, including "Typicals" must be validated for each customer application by customer's technical experts. onsemi does not convey any license under any of its intellectual property rights nor the rights of others. onsemi products are not designed, intended, or authorized for use as a critical component in life support systems or any FDA Class 3 medical devices or medical devices with a same or similar classification in a foreign jurisdiction or any devices intended for implantation in the human body. Should Buyer purchase or use onsemi products for any such unintended or unauthorized application, Buyer shall indemnify and hold onsemi and its officers, employees, subsidiaries, affiliates, and distributors harmless against all claims, costs, damages, and expenses, and reasonable attorney fees arising out of, directly or indirectly, any claim of personal injury or death associated with such unintended or unauthorized use, even if such claim alleges that onsemi was negligent regarding the design or manufacture of the part. onsemi is an Equal Opportunity/Affirmative Action Employer. This literature is subject to all applicable copyright laws and is not for resale in any manner.

## PUBLICATION ORDERING INFORMATION

LITERATURE FULFILLMENT:  
Email Requests to: [orderlit@onsemi.com](mailto:orderlit@onsemi.com)

onsemi Website: [www.onsemi.com](http://www.onsemi.com)

TECHNICAL SUPPORT  
North American Technical Support:  
Voice Mail: 1 800-282-9855 Toll Free USA/Canada  
Phone: 011 421 33 790 2910

Europe, Middle East and Africa Technical Support:  
Phone: 00421 33 790 2910  
For additional information, please contact your local Sales Representative