

# ON Semiconductor

## Is Now

The logo for onsemi, featuring the word "onsemi" in a dark teal, lowercase, sans-serif font. The letter "i" is stylized with a white dot and a teal vertical bar. A small orange triangle is positioned above the top right of the "i". A trademark symbol (TM) is located to the right of the logo.

To learn more about onsemi™, please visit our website at  
[www.onsemi.com](http://www.onsemi.com)

---

**onsemi** and **onsemi** and other names, marks, and brands are registered and/or common law trademarks of Semiconductor Components Industries, LLC dba "**onsemi**" or its affiliates and/or subsidiaries in the United States and/or other countries. **onsemi** owns the rights to a number of patents, trademarks, copyrights, trade secrets, and other intellectual property. A listing of **onsemi** product/patent coverage may be accessed at [www.onsemi.com/site/pdf/Patent-Marking.pdf](http://www.onsemi.com/site/pdf/Patent-Marking.pdf). **onsemi** reserves the right to make changes at any time to any products or information herein, without notice. The information herein is provided "as-is" and **onsemi** makes no warranty, representation or guarantee regarding the accuracy of the information, product features, availability, functionality, or suitability of its products for any particular purpose, nor does **onsemi** assume any liability arising out of the application or use of any product or circuit, and specifically disclaims any and all liability, including without limitation special, consequential or incidental damages. Buyer is responsible for its products and applications using **onsemi** products, including compliance with all laws, regulations and safety requirements or standards, regardless of any support or applications information provided by **onsemi**. "Typical" parameters which may be provided in **onsemi** data sheets and/or specifications can and do vary in different applications and actual performance may vary over time. All operating parameters, including "Typicals" must be validated for each customer application by customer's technical experts. **onsemi** does not convey any license under any of its intellectual property rights nor the rights of others. **onsemi** products are not designed, intended, or authorized for use as a critical component in life support systems or any FDA Class 3 medical devices or medical devices with a same or similar classification in a foreign jurisdiction or any devices intended for implantation in the human body. Should Buyer purchase or use **onsemi** products for any such unintended or unauthorized application, Buyer shall indemnify and hold **onsemi** and its officers, employees, subsidiaries, affiliates, and distributors harmless against all claims, costs, damages, and expenses, and reasonable attorney fees arising out of, directly or indirectly, any claim of personal injury or death associated with such unintended or unauthorized use, even if such claim alleges that **onsemi** was negligent regarding the design or manufacture of the part. **onsemi** is an Equal Opportunity/Affirmative Action Employer. This literature is subject to all applicable copyright laws and is not for resale in any manner. Other names and brands may be claimed as the property of others.

## Adjusting the Over Temperature Protection Trip Point in NCP1250-Based Adapters



ON Semiconductor®

<http://onsemi.com>

### APPLICATION NOTE

The NCP1250 features a multi-function pin in which the user can implement Over Power Protection (OPP) and Over Voltage Protection (OVP). If you add a Negative Temperature Coefficient (NTC) resistor in parallel with the OVP Zener diode, you have a means to protect the adapter against thermal runaway. The operating principle is simple: the latch detection is made by observing the OPP pin level via a comparator featuring a 3 V reference voltage. When the NTC resistance decreases as the temperature increases, the off-time voltage on the OPP pin goes up. When it touches the 3 V reference four consecutive times, the controller permanently latches off.

Customers often re-use an NTC they have already implemented in previous projects and define the pull-down

resistor on the OPP pin in relationship with this NTC value. This technique can lead to rather high pull-down resistors on the OPP pin to ground. If this resistance is too high and the converter noisy, the converter immunity can be reduced with possible erratic operations. The solution to fix this kind of problem is to reduce the pull-down resistance. Values below 3 kΩ give good operating results. There are cases where the noise in the adapter will require low values such as 1 kΩ. To still meet the OTP trip point, you will need to install a resistor in parallel with the existing NTC device. The solution appears in Figure 1.

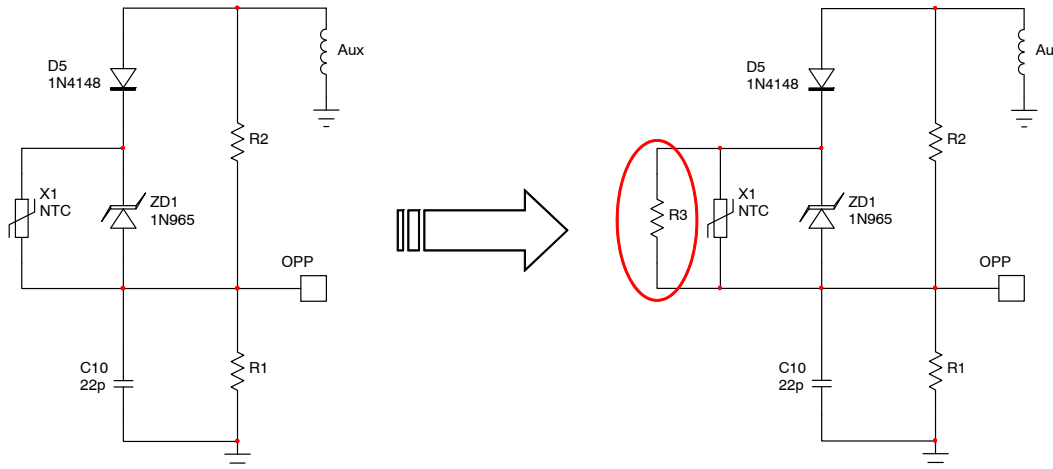


Figure 1. This Picture Shows How to Adapt an Existing NTC Value to Adjust the OTP Trip Point

As a design example, let us assume that we have the following component values around the NCP1250:

- $R_1 = 1 \text{ k}\Omega$ ; the NCP1250 pull-down resistor on the OPP pin.
- $R_{NTC} = 15 \text{ k}\Omega$ ; the NTC value at the select OTP trip point.
- $N_{pa} = 0.2$ ; the turns ratio between the primary and auxiliary windings.
- $N_{ps} = 0.09$ ; the turns ratio between the primary and secondary windings.
- $V_{out} = 5 \text{ V}$ ; the converter output voltage.
- $V_f = 0.6 \text{ V}$ ; the diodes forward drops in the auxiliary and secondary windings.

At first, we need to know the voltage across the NTC in fault mode, e.g. when the OPP pin level reaches 3 V. This voltage is defined by the plateau voltage on the auxiliary

winding during the off time. It also depends on the 0.6 V forward drop of diode D<sub>1</sub> and the 3 V OVP level:

$$V_{NTC} = (V_{out} + V_f) \times \frac{N_{pa}}{N_{ps}} - V_{OVP} - V_f \quad (\text{eq. 1})$$

$$= (5 + 0.6) \times \frac{0.2}{0.09} - 3 - 0.6 = 8.8 \text{ V}$$

Based on 1 kΩ pull-down OPP resistor, the current in fault mode ( $V_{OVP} = 3 \text{ V}$ ) is:

$$I_{R1} = \frac{V_{OVP}}{R_1} = \frac{3}{1000} = 3 \text{ mA} \quad (\text{eq. 2})$$

From Equations 1 and 2, we can derive the equivalent resistance made of the NTC in parallel with the resistor we are looking for ( $R_3$ ):

$$R_{eq} = \frac{V_{NTC}}{I_{R1}} = \frac{8.8}{3\text{m}} = 2.9 \text{ k}\Omega \quad (\text{eq. 3})$$

Knowing that the equivalent resistor is the NTC paralleled with the added resistance ( $R_3$ ), we have:

$$R_{eq} = \frac{R_3 R_{NTC}}{R_{NTC} + R_3} \quad (\text{eq. 4})$$

Solving for  $R_3$  leads to:

$$R_3 = \frac{R_{eq} R_{NTC}}{R_{NTC} - R_{eq}} = \frac{2.9\text{k} \times 15\text{k}}{15\text{k} - 2.9\text{k}} = 3.7 \text{ k}\Omega \quad (\text{eq. 5})$$

The next step is to recalculate the OPP resistor ( $R_2$  in Figure 1). For instance, if we need a 300 mV decrease from the 0.8 V setpoint at high line, then the auxiliary diode anode during the on-time swings to:

$$V_{ANODE} = -N_{pa} \times V_{IN} = -0.2 \times (264 \times \sqrt{2}) = -74.7 \text{ V} \quad (\text{eq. 6})$$

We can evaluate the voltage drop around  $R_2$  as:

$$V_{R2} = 74.7 - 0.3 = 74.4 \text{ V} \quad (\text{eq. 7})$$

The current flowing in the pull-down resistor  $R_1$  in this condition will be:


$$I_{R1} = \frac{300\text{m}}{1\text{k}} = 300 \mu\text{A} \quad (\text{eq. 8})$$

The  $R_2$  value is therefore easily derived:

$$R_2 = \frac{74.4}{300\mu} = 248 \text{ k}\Omega \quad (\text{eq. 9})$$

### Conclusion

This application note explains how we can easily adjust the Over Temperature Protection trip point by paralleling a resistor with an available NTC device. In case of noisy layouts, it helps to decrease the OPP pin pull-down resistor to a value close or below one kΩ, naturally improving the converter robustness to external perturbations.

**ON Semiconductor** and  are registered trademarks of Semiconductor Components Industries, LLC (SCILLC). SCILLC reserves the right to make changes without further notice to any products herein. SCILLC makes no warranty, representation or guarantee regarding the suitability of its products for any particular purpose, nor does SCILLC assume any liability arising out of the application or use of any product or circuit, and specifically disclaims any and all liability, including without limitation special, consequential or incidental damages. "Typical" parameters which may be provided in SCILLC data sheets and/or specifications can and do vary in different applications and actual performance may vary over time. All operating parameters, including "Typicals" must be validated for each customer application by customer's technical experts. SCILLC does not convey any license under its patent rights nor the rights of others. SCILLC products are not designed, intended, or authorized for use as components in systems intended for surgical implant into the body, or other applications intended to support or sustain life, or for any other application in which the failure of the SCILLC product could create a situation where personal injury or death may occur. Should Buyer purchase or use SCILLC products for any such unintended or unauthorized application, Buyer shall indemnify and hold SCILLC and its officers, employees, subsidiaries, affiliates, and distributors harmless against all claims, costs, damages, and expenses, and reasonable attorney fees arising out of, directly or indirectly, any claim of personal injury or death associated with such unintended or unauthorized use, even if such claim alleges that SCILLC was negligent regarding the design or manufacture of the part. SCILLC is an Equal Opportunity/Affirmative Action Employer. This literature is subject to all applicable copyright laws and is not for resale in any manner.

### PUBLICATION ORDERING INFORMATION

**LITERATURE FULFILLMENT:**  
Literature Distribution Center for ON Semiconductor  
P.O. Box 5163, Denver, Colorado 80217 USA  
**Phone:** 303-675-2175 or 800-344-3860 Toll Free USA/Canada  
**Fax:** 303-675-2176 or 800-344-3867 Toll Free USA/Canada  
**Email:** orderlit@onsemi.com

**N. American Technical Support:** 800-282-9855 Toll Free USA/Canada  
**Europe, Middle East and Africa Technical Support:**  
Phone: 421 33 790 2910  
**Japan Customer Focus Center**  
Phone: 81-3-5817-1050

**ON Semiconductor Website:** [www.onsemi.com](http://www.onsemi.com)  
**Order Literature:** <http://www.onsemi.com/orderlit>  
For additional information, please contact your local Sales Representative