

ON Semiconductor

Is Now

onsemi™

To learn more about onsemi™, please visit our website at
www.onsemi.com

onsemi and **onsemi** and other names, marks, and brands are registered and/or common law trademarks of Semiconductor Components Industries, LLC dba "**onsemi**" or its affiliates and/or subsidiaries in the United States and/or other countries. **onsemi** owns the rights to a number of patents, trademarks, copyrights, trade secrets, and other intellectual property. A listing of **onsemi** product/patent coverage may be accessed at www.onsemi.com/site/pdf/Patent-Marking.pdf. **onsemi** reserves the right to make changes at any time to any products or information herein, without notice. The information herein is provided "as-is" and **onsemi** makes no warranty, representation or guarantee regarding the accuracy of the information, product features, availability, functionality, or suitability of its products for any particular purpose, nor does **onsemi** assume any liability arising out of the application or use of any product or circuit, and specifically disclaims any and all liability, including without limitation special, consequential or incidental damages. Buyer is responsible for its products and applications using **onsemi** products, including compliance with all laws, regulations and safety requirements or standards, regardless of any support or applications information provided by **onsemi**. "Typical" parameters which may be provided in **onsemi** data sheets and/or specifications can and do vary in different applications and actual performance may vary over time. All operating parameters, including "Typicals" must be validated for each customer application by customer's technical experts. **onsemi** does not convey any license under any of its intellectual property rights nor the rights of others. **onsemi** products are not designed, intended, or authorized for use as a critical component in life support systems or any FDA Class 3 medical devices or medical devices with a same or similar classification in a foreign jurisdiction or any devices intended for implantation in the human body. Should Buyer purchase or use **onsemi** products for any such unintended or unauthorized application, Buyer shall indemnify and hold **onsemi** and its officers, employees, subsidiaries, affiliates, and distributors harmless against all claims, costs, damages, and expenses, and reasonable attorney fees arising out of, directly or indirectly, any claim of personal injury or death associated with such unintended or unauthorized use, even if such claim alleges that **onsemi** was negligent regarding the design or manufacture of the part. **onsemi** is an Equal Opportunity/Affirmative Action Employer. This literature is subject to all applicable copyright laws and is not for resale in any manner. Other names and brands may be claimed as the property of others.

Implementing a Simple Brown-out Solution on the NCP101X Series

Prepared by: David Sabatie
ON Semiconductor



ON Semiconductor®

<http://onsemi.com>

APPLICATION NOTE

Introduction

Some AC-DC applications require a clean start-up sequence when the mains reaches a certain level to avoid stressing the power MOSFET at low-line, especially when the bulk capacitor starts to charge up. Also, at power-off, the power supply shall not go into hiccup as the bulk capacitor depletes and can no longer deliver the required energy. To provide such a behavior, the present application note describes a low-cost brown-out circuit successfully tested on the NCP101X switcher series.

The NCP101X series integrates a fixed-frequency current-mode controller and a 700 V MOSFET. Housed in a PDIP-7, PDIP-7 Gull Wing, or SOT-223 package, the NCP101X offers everything needed to build a rugged and low-cost power supply, including soft-start, frequency jittering, short-circuit protection, skip-cycle and a Dynamic Self-Supply (no need for an auxiliary winding). Unlike other monolithic solutions, the NCP101X is quiet by nature: during nominal load operation, the part switches at one of the available frequencies (65 – 100 – 130 kHz). When the current setpoint falls below a given value, e.g. the output power demand diminishes; the IC automatically enters the so-called skip-cycle mode and provides excellent efficiency at light loads. Because this occurs at typically 1/4 of the maximum peak value, no acoustic noise takes place. As a result, standby power is reduced to the minimum without acoustic noise generation. Skip cycle is implemented by monitoring the feedback voltage. As it drops below a certain level, a dedicated comparator blanks the switching events. If a circuit maintains the pin below the skip level, we have a mean to stop the circuit, e.g. for a brown-out implementation...

Brown-out

As explained in the introduction, some particular applications impose a minimum input voltage below which the power supply shall not work. To start the SMPS, a circuit constantly monitors the rectified mains voltage and pulls the feedback pin down to ground until the mains voltage reaches the desired value. When this happens, we need to introduce a certain amount of hysteresis to avoid going into a hiccup mode as the ripple on the bulk increases.

Figure 1 shows a possible implementation where no hysteresis is necessary.

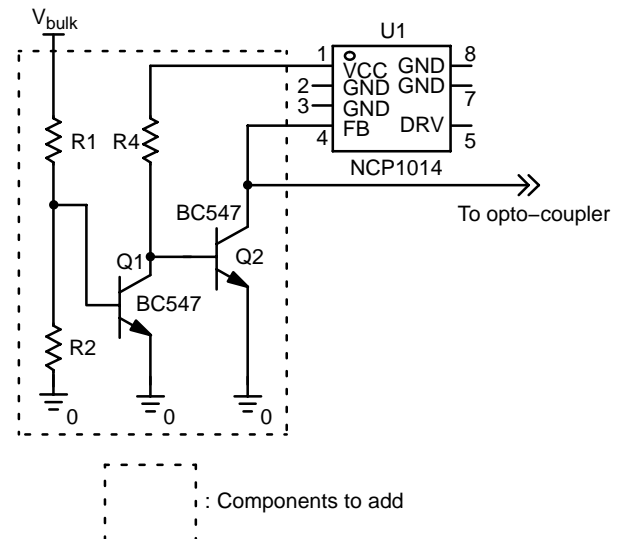


Figure 1. In This Application, There is No Need for Hysteresis

We set the startup V_{bulk} voltage by pulling the feedback pin low until enough voltage builds-up on the bulk capacitor. When V_{bulk} is too low, Q1 is blocked and Q2 base is pulled-up by R4 to V_{CC} (≈ 8 V). Q2 being saturated, the feedback pin goes directly to ground. As we explained, the product does not start thanks to the presence of the internal skip-cycle comparator. When V_{bulk} reaches the selected value (determined by R1 and R2), Q1 saturates and Q2 base goes to ground, naturally blocking the transistor. The feedback is now solely driven by the opto-coupler and the system can freely operate.

To implement this brown-out function, highlighted components are used, two standard NPN transistors and three resistors. The remaining components in the design are not modified. The design equations are as follows:

1. select the bridge current flowing in R1 and R2:
50 μ A to avoid wasting power at high line.

2. calculate R_2 assuming a V_{be} around 650 mV:

$$R_2 = \frac{0.65}{50 \mu} = 13 \text{ k}\Omega \quad (\text{eq. 1})$$

3. If we want a startup around 100 Vdc, then the upper resistor is found to be:

$$R_1 = \frac{100 - 0.65}{50 \mu} = 1.98 \text{ M}\Omega \quad (\text{eq. 2})$$

4. R_4 is fixed to 10 k Ω , a choice limiting the Dynamic Self Supply (DSS) loading current to a reasonable value.

Adding Hysteresis to the Brown-out Detection, Auxiliary Winding Solution

Now, let us see how we can add some hysteresis via the usage of the auxiliary winding. Figure 2 portrays the idea:

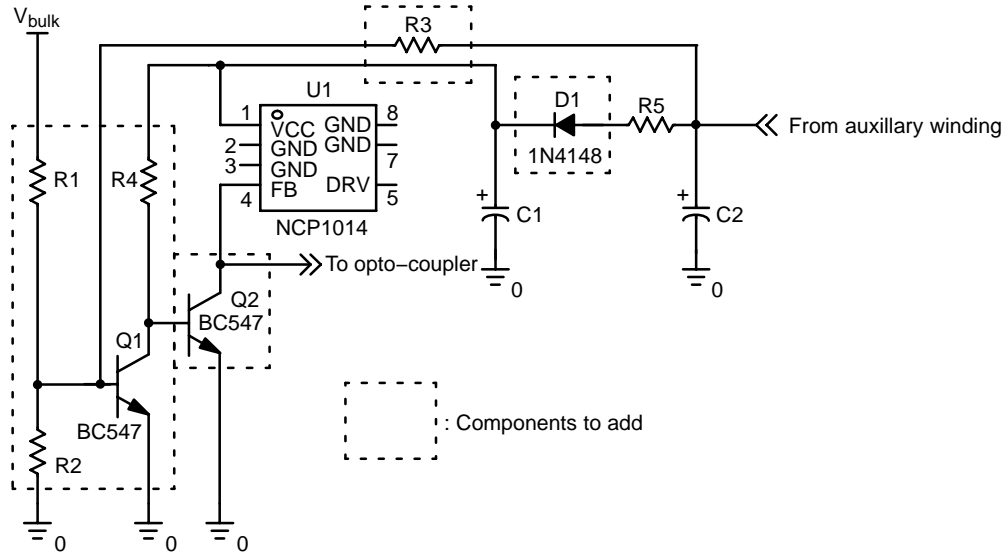


Figure 2. A Small Hysteresis is Added via R_3 .

The main circuit actually does not differ compared to that of Figure 1. However, the addition of a small voltage offset changes the behavior at turn-off. During the startup phase, there is no auxiliary voltage. Hence, R_3 right terminal is pulled down to ground. Thanks to D_1 which isolates the device from the NCP1014 DSS level, there is no voltage. When the system starts to work, the auxiliary branch goes up and brings its level around 23 V (in our particular example). Via R_3 , it slightly raises Q_1 V_{be} voltage, now forcing V_{bulk} to reduce to a further down level, in comparison with the startup level. To implement this brown-out function, Figure 2 shows the additional components. The highlighted components are used. The other components in the design are not modified.

The design equations now include the presence of R_3 , coming in parallel with R_2 during the start-up sequence. However, we can neglect its contribution as its value is much higher than R_2 as we will see:

1. select the bridge current flowing in R_1 and R_2 :
50 μ A to avoid wasting power at high line.
2. calculate R_2 assuming a V_{be} around 650 mV:

$$R_2 = \frac{0.65}{50 \mu} = 13 \text{ k}\Omega \quad (\text{eq. 3})$$

3. If we want a startup around 100 Vdc, then the upper resistor is found to be:

$$R_1 = \frac{100 - 0.65}{50 \mu} = 1.98 \text{ M}\Omega \quad (\text{eq. 4})$$

4. Once the auxiliary voltage comes into play, the voltage over R_2 including R_3 is given by (applying superposition):

$$V_{be} = V_{bulk} \frac{R_2 \parallel R_3}{R_2 \parallel R_3 + R_1} + V_{aux} \frac{R_1 \parallel R_2}{R_1 \parallel R_2 + R_3},$$

solving for R_3 gives:

$$R_3 = \frac{R_1 R_2 (V_{aux} - V_{be})}{V_{be} (R_1 + R_2) - V_{bulk} R_2} \quad (\text{eq. 5})$$

Keeping similar values as in the above example, if we want a cutoff voltage of 70 Vdc with a 23 V auxiliary level (in this particular example), then $R_3 = 1.5 \text{ M}\Omega$.

5. R_4 is fixed to 10 k Ω , a choice limiting the Dynamic Self Supply (DSS) loading current to a reasonable value

Adding Hysteresis to the Brown-out Detection, DSS Solution

When using the NCP101X series in a non-auxiliary supply solution, the controller receives its operating supply from the DSS, bringing V_{CC} between 7.5 and 8.5 V. Rather than connecting the hysteresis resistor to the auxiliary voltage, why not wiring it to the DSS supply. The arrangement is then slightly different as the DSS is already present at startup. The trick consists in shunting a resistor in series with the lower side element once the circuit has started: it artificially raises the level on the bottom transistor Q_1 base.

AND8272/D

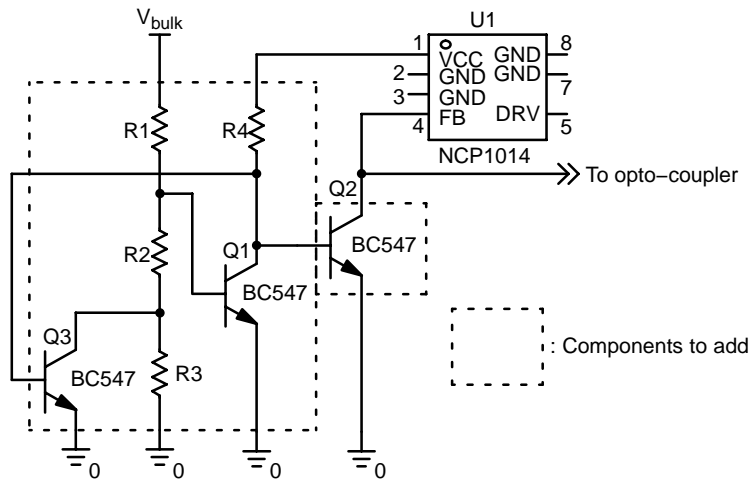


Figure 3. Altering the Bottom Resistor once the Circuit has Started Helps Creating the Necessary Hysteresis

Designs equations are not complicated, compared to the previous calculations. At power-up, Q₃ is biased by R₄ and R₃ goes off the picture (we neglect Q₃ V_{ce,sat}):

$$V_{be} = \frac{R_2}{R_2 + R_1} V_{bulk}$$

The method to evaluate R₂ and R₁ is similar to bullets 1 to 3 above.

When the circuit starts to operate, in other words Q₁ collector being low, Q₃ is blocked and R₃ appears in series with R₂. The above equation becomes:

$$V_{be} = \frac{R_2 + R_3}{R_2 + R_3 + R_1} V_{bulk} \quad (\text{eq. 6})$$


Solving this equation gives the series resistor value where V_{bulk} represents the turn-off value:

$$R_3 = \frac{V_{be}(R_1 + R_2) - V_{bulk}R_2}{V_{bulk} - V_{be}}$$

Again, if we stick to our 70 Vdc cutoff level, we have R₃ = 5.6 kΩ.

Conclusion

As we have shown here, various possibilities exist to implement brownout protection on NCP101X boards. Despite the natural V_{be} variations with temperature, the obtained results are good for low-cost adapters. For more precise trip points, designer should consider a more efficient solution built around the NCP1027 which features a real programmable brown-out protection.

ON Semiconductor and  are registered trademarks of Semiconductor Components Industries, LLC (SCILLC). SCILLC reserves the right to make changes without further notice to any products herein. SCILLC makes no warranty, representation or guarantee regarding the suitability of its products for any particular purpose, nor does SCILLC assume any liability arising out of the application or use of any product or circuit, and specifically disclaims any and all liability, including without limitation special, consequential or incidental damages. "Typical" parameters which may be provided in SCILLC data sheets and/or specifications can and do vary in different applications and actual performance may vary over time. All operating parameters, including "Typicals" must be validated for each customer application by customer's technical experts. SCILLC does not convey any license under its patent rights nor the rights of others. SCILLC products are not designed, intended, or authorized for use as components in systems intended for surgical implant into the body, or other applications intended to support or sustain life, or for any other application in which the failure of the SCILLC product could create a situation where personal injury or death may occur. Should Buyer purchase or use SCILLC products for any such unintended or unauthorized application, Buyer shall indemnify and hold SCILLC and its officers, employees, subsidiaries, affiliates, and distributors harmless against all claims, costs, damages, and expenses, and reasonable attorney fees arising out of, directly or indirectly, any claim of personal injury or death associated with such unintended or unauthorized use, even if such claim alleges that SCILLC was negligent regarding the design or manufacture of the part. SCILLC is an Equal Opportunity/Affirmative Action Employer. This literature is subject to all applicable copyright laws and is not for resale in any manner.

PUBLICATION ORDERING INFORMATION

LITERATURE FULFILLMENT:
Literature Distribution Center for ON Semiconductor
P.O. Box 5163, Denver, Colorado 80217 USA
Phone: 303-675-2175 or 800-344-3860 Toll Free USA/Canada
Fax: 303-675-2176 or 800-344-3867 Toll Free USA/Canada
Email: orderlit@onsemi.com

N. American Technical Support: 800-282-9855 Toll Free
USA/Canada
Europe, Middle East and Africa Technical Support:
Phone: 421 33 790 2910
Japan Customer Focus Center
Phone: 81-3-5773-3850

ON Semiconductor Website: www.onsemi.com
Order Literature: <http://www.onsemi.com/orderlit>

For additional information, please contact your local Sales Representative