

ON Semiconductor

Is Now

onsemi™

To learn more about onsemi™, please visit our website at
www.onsemi.com

onsemi and **onsemi** and other names, marks, and brands are registered and/or common law trademarks of Semiconductor Components Industries, LLC dba "**onsemi**" or its affiliates and/or subsidiaries in the United States and/or other countries. **onsemi** owns the rights to a number of patents, trademarks, copyrights, trade secrets, and other intellectual property. A listing of **onsemi** product/patent coverage may be accessed at www.onsemi.com/site/pdf/Patent-Marking.pdf. **onsemi** reserves the right to make changes at any time to any products or information herein, without notice. The information herein is provided "as-is" and **onsemi** makes no warranty, representation or guarantee regarding the accuracy of the information, product features, availability, functionality, or suitability of its products for any particular purpose, nor does **onsemi** assume any liability arising out of the application or use of any product or circuit, and specifically disclaims any and all liability, including without limitation special, consequential or incidental damages. Buyer is responsible for its products and applications using **onsemi** products, including compliance with all laws, regulations and safety requirements or standards, regardless of any support or applications information provided by **onsemi**. "Typical" parameters which may be provided in **onsemi** data sheets and/or specifications can and do vary in different applications and actual performance may vary over time. All operating parameters, including "Typicals" must be validated for each customer application by customer's technical experts. **onsemi** does not convey any license under any of its intellectual property rights nor the rights of others. **onsemi** products are not designed, intended, or authorized for use as a critical component in life support systems or any FDA Class 3 medical devices or medical devices with a same or similar classification in a foreign jurisdiction or any devices intended for implantation in the human body. Should Buyer purchase or use **onsemi** products for any such unintended or unauthorized application, Buyer shall indemnify and hold **onsemi** and its officers, employees, subsidiaries, affiliates, and distributors harmless against all claims, costs, damages, and expenses, and reasonable attorney fees arising out of, directly or indirectly, any claim of personal injury or death associated with such unintended or unauthorized use, even if such claim alleges that **onsemi** was negligent regarding the design or manufacture of the part. **onsemi** is an Equal Opportunity/Affirmative Action Employer. This literature is subject to all applicable copyright laws and is not for resale in any manner. Other names and brands may be claimed as the property of others.



Is Now Part of



ON Semiconductor®

To learn more about ON Semiconductor, please visit our website at
www.onsemi.com

ON Semiconductor and the ON Semiconductor logo are trademarks of Semiconductor Components Industries, LLC dba ON Semiconductor or its subsidiaries in the United States and/or other countries. ON Semiconductor owns the rights to a number of patents, trademarks, copyrights, trade secrets, and other intellectual property. A listing of ON Semiconductor's product/patent coverage may be accessed at www.onsemi.com/site/pdf/Patent-Marking.pdf. ON Semiconductor reserves the right to make changes without further notice to any products herein. ON Semiconductor makes no warranty, representation or guarantee regarding the suitability of its products for any particular purpose, nor does ON Semiconductor assume any liability arising out of the application or use of any product or circuit, and specifically disclaims any and all liability, including without limitation special, consequential or incidental damages. Buyer is responsible for its products and applications using ON Semiconductor products, including compliance with all laws, regulations and safety requirements or standards, regardless of any support or applications information provided by ON Semiconductor. "Typical" parameters which may be provided in ON Semiconductor data sheets and/or specifications can and do vary in different applications and actual performance may vary over time. All operating parameters, including "Typicals" must be validated for each customer application by customer's technical experts. ON Semiconductor does not convey any license under its patent rights nor the rights of others. ON Semiconductor products are not designed, intended, or authorized for use as a critical component in life support systems or any FDA Class 3 medical devices or medical devices with a same or similar classification in a foreign jurisdiction or any devices intended for implantation in the human body. Should Buyer purchase or use ON Semiconductor products for any such unintended or unauthorized application, Buyer shall indemnify and hold ON Semiconductor and its officers, employees, subsidiaries, affiliates, and distributors harmless against all claims, costs, damages, and expenses, and reasonable attorney fees arising out of, directly or indirectly, any claim of personal injury or death associated with such unintended or unauthorized use, even if such claim alleges that ON Semiconductor was negligent regarding the design or manufacture of the part. ON Semiconductor is an Equal Opportunity/Affirmative Action Employer. This literature is subject to all applicable copyright laws and is not for resale in any manner.

AN-9736

Design Guideline of AC-DC Converter Using FL6961 & FL6300A for 70W LED Lighting

Summary

This application note describes a design strategy for a Power Factor Correction (PFC) circuit and higher-power conversion efficiency using FL6961 and FL6300A. Based on this design guideline and several functions of each controller for LED lighting applications, a design example with detailed parameters demonstrates the performance.

Introduction

Figure 1 shows the typical application circuit, with the BCM PFC converter in the front end and the Quasi-resonant (QR) flyback converter in the back end. FL6961 and FL6300A achieve high efficiency with relatively low cost for 75~200W applications where BCM and QR operation with a single switch shows best performance. BCM boost PFC converter can achieve better efficiency with lower cost than Continuous Conduction Mode (CCM) boost PFC converter. These benefits result from the elimination of the reverse-recovery losses of the boost diode and zero-voltage

switching (ZVS) or near-ZVS (also called valley switching) of boost switch. The QR flyback converter for the DC-DC conversion achieves higher efficiency than the conventional hard-switching converter with valley switching.

The FL6961 provides a controlled on-time to regulate the output DC voltage and achieves natural power factor correction. The maximum on-time of the switch is programmable to ensure safe operation during AC brownouts. The FL6300A ensures the power system operates in quasi-resonant operation in wide range line voltage and reduces switching loss to minimize switching voltage in drain of the power MOSFET. To minimize standby power consumption and improve light-load efficiency, a proprietary Green-Mode provides off-time modulation to decrease switching frequency and perform extended valley voltage switching to keep to a minimum switching voltage.

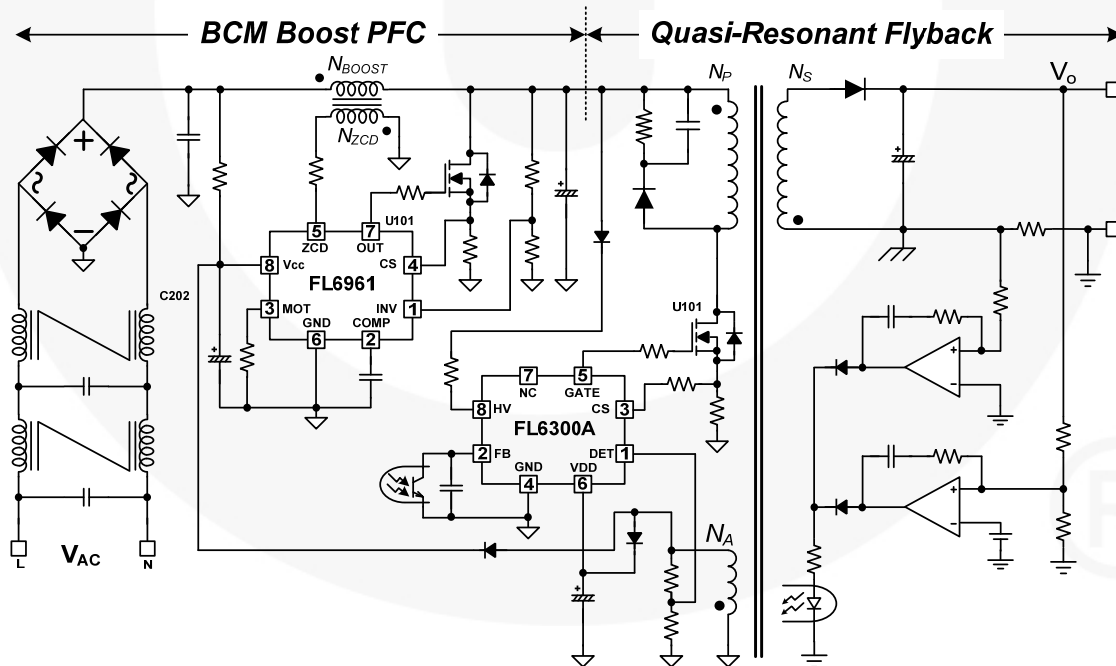


Figure 1. Typical Application Circuit

1. Basin Operation of BCM Boost PFC Converter

The typical boost converter and its operational waveforms are shown in Figure 2, Figure 3, and Figure 4.

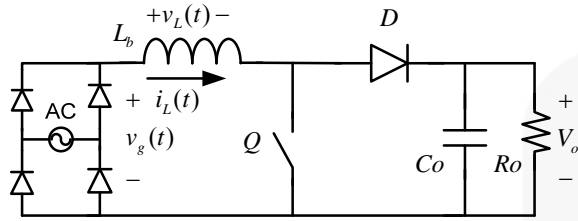


Figure 2. Boost Converter

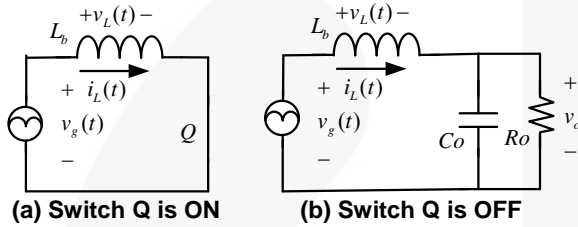


Figure 3. Switching Sequences of the Boost Converter

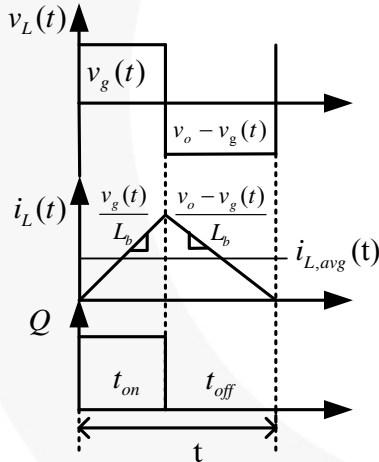


Figure 4. One-Cycle Waveform of the Boost Converter

1.1. Operation Principle

When Q turns on, the rectifier diode D is reverse-biased and output capacitor C_o supplies load current. The rectified AC line input voltage V_g(t) is applied to the inductor L_b so that inductor current I_L ramps up linearly and can be expressed as:

$$I_L(t_{on}) = \frac{V_g(t)}{L_b} \tag{1}$$

When Q turns off, the voltage V_o-V_g(t) is applied to inductor L_b and the polarity on the inductor L_b is reversed. The diode D is forward-biased in this stage. The energy stored in the inductor L_b is delivered to supply load current

and output capacitor C_o. The inductor current I_L can be expressed as:

$$I_L(t_{off}) = \frac{V_o - V_g(t)}{L_b} \tag{2}$$

The on-time of the power MOSFET Q is determined by the output of the error amplifier that monitors the pre-regulator output voltage. With a low-bandwidth error amplifier, the feedback signal is almost constant during a half AC cycle, resulting a fixed on-time of the power MOSFET at a specific AC voltage and some certain output power level. Therefore, the peak inductor current I_{Lpk} automatically follows the input voltage V_g(t), achieving a natural power factor correction mechanism. Figure 5 shows the typical inductor current waveform during a half AC cycle.

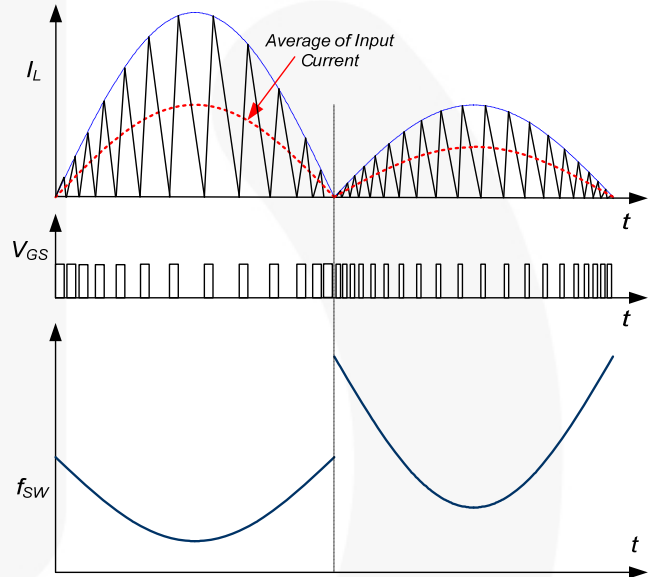


Figure 5. Controlled On-Time Inductor Current Waveform

Referring to Figure 4, considering one switching period the average inductor current, I_{L,ave}(t) can be calculated by the average area of triangle waveform of inductor current:

$$I_{L,ave}(t) = [V_g(t) + \frac{V_g(t)^2}{V_o - V_g(t)}] \times \frac{[t_{on}]^2}{2 \cdot L_b} \cdot T_s \tag{3}$$

2. Operation Principle of Quasi-Resonant Flyback Converter

QR flyback converter topology can be derived from a conventional square wave, Pulse-Width Modulated (PWM), flyback converter without additional components. Figure 6 and Figure 7 show the simplified circuit diagram of a quasi-resonant flyback converter and its typical waveforms.

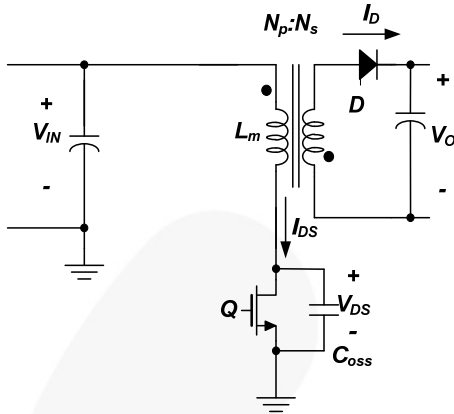


Figure 6. Schematic of QR Flyback Converter

2.1. Operation Principle

- During the MOSFET on time (t_{ON}), input voltage (V_{IN}) is applied across the primary-side inductor (L_m). MOSFET current (I_{DS}) increases linearly from zero to the peak value (I_{pk}). During this time, the energy is drawn from the input and stored in the inductor.
- When the MOSFET is turned off, the energy stored in the inductor forces the rectifier diode (D) to turn on. During the diode ON time (t_D), the output voltage (V_o) is applied across the secondary-side inductor and the diode current (I_D) decreases linearly from the peak value to zero. At the end of t_D , all the energy stored in the inductor has been delivered to the output. During this period, the output voltage is reflected to the primary side as $V_o \times N_p/N_s$. Then, the sum of input voltage (V_{IN}) and the reflected output voltage ($V_o \times N_p/N_s$) is imposed across the MOSFET.
- When the diode current reaches zero, the drain-to-source voltage (V_{DS}) begins to oscillate by the resonance between the primary-side inductor (L_m) and the MOSFET output capacitor (C_{OSS}) with an amplitude of $V_o \times N_p/N_s$ on the offset of V_{IN} , as depicted in Figure 7. Quasi-resonant switching is achieved by turning on the MOSFET when V_{DS} reaches its minimum value. This reduces the MOSFET turn-on switching loss caused by the capacitance loading between the drain and source of the MOSFET.

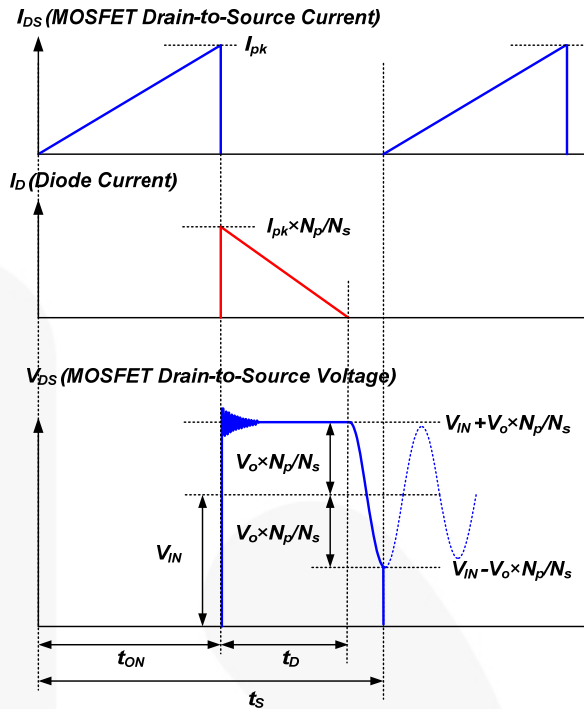


Figure 7. Typical Waveforms of QR Flyback Converter

3. Design Considerations

This design procedure uses the schematic in Figure 1 as a reference. A 70W PFC application with universal input range is selected as a design example. The design specifications are:

- Line Voltage Range: 90~277V_{AC} (60Hz)
- Output of DC-DC Converter: 24V/2.9A (70W)
- PFC Output Voltage for Line Voltage: 420V
- Minimum PFC Switching Frequency: > 58kHz
- Minimum QR flyback Switching Frequency: > 50kHz
- Overall Efficiency: 90% (PFC: 95%, QR: 95%)

3.1. PFC Section

3.1.1. Boost Inductor Design

The boost inductor value is determined by the output power and the minimum switching frequency. The voltage-second balance equation for the inductor is:

$$V_{IN}(t) \cdot t_{ON} = (V_{O,PFC} - V_{IN}(t)) \cdot t_{OFF} \quad (4)$$

$$f_{SW, MIN} = \frac{1}{t_{ON} + t_{OFF}} = \frac{1}{t_{ON}} \cdot \frac{V_{O,PFC} - \sqrt{2}V_{LINE}}{V_{O,PFC}} \quad (5)$$

where $V_{IN}(t)$ is the rectified line voltage.

V_{LINE} is RMS line voltage;

t_{ON} is the MOSFET conduction time; and

$V_{O,PFC}$ is the PFC output voltage.

The MOSFET conduction time with a given line voltage at a nominal output power is given as:

$$t_{ON} = \frac{2 \cdot P_{OUT} \cdot L}{\eta \cdot V_{LINE}^2} \quad (6)$$

where:

η is the overall efficiency;

L is the boost inductance; and

P_{OUT} is the nominal output power.

Using Equation 5, the minimum switching frequency of Equation 6 can be expressed as:

$$f_{SW, MIN} = \frac{\eta \cdot V_{LINE}^2}{2 \cdot P_{OUT} \cdot L} \cdot \frac{V_{O,PFC} - \sqrt{2}V_{LINE}}{V_{O,PFC}} \quad (7)$$

As shown in Figure 5, considering one AC line voltage cycle, the minimum switching frequency occurs at peak of the AC line voltage. Also, the minimum switching frequency may occur in AC maximum or minimum input voltage, depending on the output voltage. Therefore, calculate both the maximum and the minimum input voltage and choose the lower inductance value. Once the output voltage and minimum switching frequency are set, the inductor value is given as:

$$L = \frac{\eta \cdot V_{LINE,MAX}^2}{2 \cdot P_{OUT} \cdot f_{SW, MIN}} \cdot \frac{V_{O,PFC} - \sqrt{2}V_{LINE,MAX}}{V_{O,PFC}} \quad (8)$$

where $V_{LINE,MAX}$ is the maximum line voltage.

As the minimum frequency decreases, the switching loss is reduced, while the inductor size and line filter size increase. Thus, the minimum switching frequency should be determined by the trade-off between efficiency and the size of magnetic components. The minimum switching frequency must be above 20kHz to prevent audible noise.

Once the inductance value is decided, the maximum peak inductor current at the nominal output power is obtained at low-line condition as:

$$I_{L,PK} = \frac{2\sqrt{2} \cdot P_{OUT}}{\eta \cdot V_{LINE,MIN}} \quad (9)$$

where $V_{LINE,MIN}$ is the minimum line voltage.

Since the maximum on time is internally limited at 25 μ s, it should be smaller than 25 μ s, as calculated by:

$$t_{ON, MAX} = \frac{2 \cdot P_{OUT} \cdot L}{\eta \cdot V_{LINE,MIN}^2} < 20\mu s \quad (10)$$

The number of turns of the boost inductor should be determined considering the core saturation. The minimum number is given as:

$$N_{BOOST} \geq \frac{I_{L,PK} \cdot L}{A_e \cdot \Delta B} \quad (11)$$

where A_e is the cross-sectional area of core and ΔB is the maximum flux swing of the core in Tesla. ΔB should be set below the saturation flux density.

(Design Example) Since the output voltage is 420V for line voltage, the minimum frequency occurs at high-line (277V_{AC}) and full-load condition. Assuming the overall efficiency is 90% and selecting the minimum frequency as 58kHz, the inductor value is obtained as:

$$L = \frac{\eta \cdot V_{LINE,MAX}^2}{2 \cdot P_{OUT} \cdot f_{SW, MIN}} \cdot \frac{V_{O,PFC} - \sqrt{2}V_{LINE,MAX}}{V_{O,PFC}} \\ = \frac{0.9 \cdot 277^2}{2 \cdot 70 \cdot 58 \times 10^3} \cdot \frac{420 - \sqrt{2} \cdot 277}{420} = 570\mu H$$

The maximum peak inductor current at nominal output power is calculated as:

$$I_{L,PK} = \frac{2\sqrt{2} \cdot P_{OUT}}{\eta \cdot V_{LINE,MIN}} = \frac{2\sqrt{2} \cdot 70}{0.9 \times 90} = 2.44 \text{ A} \\ t_{ON, MAX} = \frac{2 \cdot P_{OUT} \cdot L}{\eta \cdot V_{LINE,MIN}^2} = \frac{2 \cdot 70 \cdot 570 \times 10^{-6}}{0.9 \times 90^2} \\ = 10.9\mu s < 20\mu s$$

Assuming RM10 core (PC40, $A_e=85\text{mm}^2$) is used and setting ΔB as 0.25T, the primary winding should be:

$$N_{BOOST} \geq \frac{I_{L,PK} \cdot L}{A_e \cdot \Delta B} = \frac{2.44 \cdot 570 \times 10^{-6}}{85 \times 10^{-6} \times 0.25} = 65.8 \text{ turns}$$

Thus, the number of turns (N_{BOOST}) of boost inductor is determined as 65.

3.1.2. Auxiliary Winding Design

Figure 9 shows the internal block for Zero-Current Detection (ZCD) for the PFC. FL6961 indirectly detects the inductor zero-current instant using an auxiliary winding of the boost inductor. The auxiliary winding should be designed such that the voltage of the ZCD pin rises above 2.1V when the boost switch is turned off to trigger internal comparator as:

$$\frac{N_{ZCD}}{N_{BOOST}} (V_{O,PFC} - \sqrt{2}V_{LINE,MAX}) > 2.1V \quad (12)$$

The ZCD pin has upper voltage clamping and lower voltage clamping at 10V and 0.3V, respectively. When the ZCD pin voltage is clamped at 0.3V, the maximum sourcing current is 1.5mA and, therefore, the resistor R_{ZCD} should be properly designed to limit the current of the ZCD pin below 1.5mA in the worst case as:

$$R_{ZCD} > \frac{V_{IN}}{1.5\text{mA}} \cdot \frac{N_{AUX}}{N_{BOOST}} = \frac{\sqrt{2}V_{LINE,MAX}}{1.5\text{mA}} \cdot \frac{N_{AUX}}{N_{BOOST}} \quad (13)$$

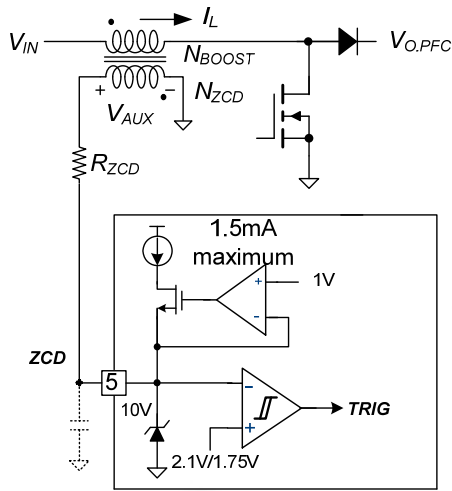


Figure 8. Internal Block for ZCD

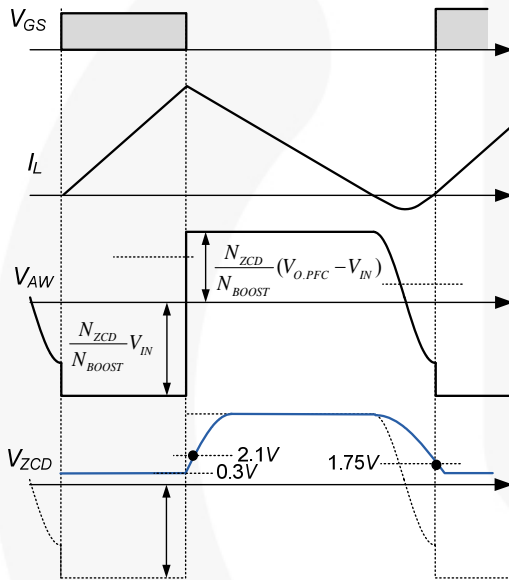


Figure 9. ZCD Waveforms

(Design Example) The number of turns for the auxiliary ZCD winding is obtained as:

$$N_{ZCD} > \frac{2.1 N_{BOOST}}{(V_{O,PFC} - \sqrt{2} V_{LINE,MAX})} = 4.83 \text{ turn}$$

With a margin, N_{AUX} is determined as 6 turns.

R_{ZCD} is selected from:

$$R_{ZCD} > \frac{\sqrt{2} V_{LINE,MAX}}{1.5\text{mA}} \cdot \frac{N_{AUX}}{N_{BOOST}} = \frac{\sqrt{2} \cdot 277}{1.5 \times 10^{-3}} \cdot \frac{6}{65} = 24\text{k}\Omega$$

as $30\text{k}\Omega$.

3.1.3. Current-Sensing Resistor for PFC

FL6961 has pulse-by-pulse current limit function. It is typical to set the pulse-by-current limit level at 20~30% higher than the maximum inductor current:

$$R_{CS1} = \frac{0.82}{I_{L,PK}(1 + K_{MARGIN})} \quad (14)$$

where K_{MARGIN} is the margin factor and 0.85V is the pulse-by-pulse current limit threshold.

(Design Example) Choosing the margin factor as 35%, the sensing resistor is selected as:

$$R_{CS1} = \frac{0.85}{I_{L,PK}(1 + K_{MARGIN})} = \frac{0.82}{2.44(1 + 0.35)} = 0.25\Omega$$

3.1.4. Output Capacitor Selection

For a given minimum PFC output voltage during the hold-up time, the PFC output capacitor is obtained as:

$$C_{O,PFC} > \frac{2P_{OUT} \cdot t_{HOLD}}{V_{O,PFC}^2 - V_{O,PFC,HLD}^2} \quad (15)$$

where:

P_{OUT} is total nominal output power;

t_{HOLD} is the required holdup time; and

$V_{O,PFC,HLD}$ is the allowable minimum output voltage during the hold-up time.

For PFC output capacitor, it is typical to use 0.5~1 μ F per 1W output power for 420V PFC output. Meanwhile, it is reasonable to use about 1 μ F per 1W output power for variable output PFC due to the larger voltage drop during the hold-up time than 420V output.

(Design Example) Assuming the minimum allowable PFC output voltage during the hold-up time is 160V, the capacitor should be:

$$C_{O,PFC} > \frac{2P_{OUT} \cdot t_{HOLD}}{V_{O,PFC}^2 - V_{O,PFC,HLD}^2} = \frac{2 \cdot 80 \cdot 20 \times 10^{-3}}{420^2 - 350^2} = 60\mu\text{F}$$

A 68 μ F capacitor is selected for the output capacitor.

3.1.5. Design Compensation Network

The feedback loop bandwidth must be lower than 20Hz for the PFC application. If the bandwidth is higher than 20Hz, the control loop may try to reduce the 120Hz ripple of the output voltage and the line current is distorted, decreasing power factor. A capacitor is connected between COMP and GND to attenuate the line frequency ripple voltage by 40dB. If a capacitor is connected between the output of the error amplifier and the GND, the error amplifier works as an integrator and the error amplifier compensation capacitor can be calculated by:

$$C_{COMP} > \frac{100 \cdot g_M}{2\pi \cdot 2f_{LINE}} \cdot \frac{25}{V_{O,PFC}} \quad (16)$$

To improve the power factor, C_{COMP} must be higher than the calculated value. However, if the value is too high, the output voltage control loop may become slow.

(Design Example)

$$C_{COMP} > \frac{100 \cdot g_M}{2\pi \cdot 2f_{LINE}} \cdot \frac{2.5}{V_{O,PFC}}$$

$$= \frac{100 \cdot 125 \times 10^{-6}}{2\pi \cdot 2 \cdot 60} \cdot \frac{2.5}{420} = 100\text{nF.}$$

470nF is selected for better power factor.

3.2. DC-DC Section

3.2.1. Determine the Reflected Output Voltage (V_{RO})

Figure 10 shows the typical operation waveforms of a quasi-resonant flyback converter. When the MOSFET is turned off, the input voltage (PFC output voltage), together with the output voltage reflected to the primary (V_{RO}), is imposed on the MOSFET. When the MOSFET is turned on, the sum of input voltage reflected to the secondary side and the output voltage is applied across the diode. Thus, the maximum nominal voltage across the MOSFET ($V_{DS,nom}$) and diode are given as:

$$V_{DS}^{nom} = V_{O,PFC} + n(V_O + V_F) = V_{O,PFC} + V_{RO} \quad (17)$$

where:

$$n = \frac{V_{RO}}{V_O + V_F} \quad (18)$$

$$V_D^{nom} = V_O + \frac{V_{O,PFC}}{n} = V_O + \frac{V_{O,PFC}}{V_{RO}}(V_O + V_F) \quad (19)$$

By increasing V_{RO} (i.e. the turns ratio, n), the capacitive switching loss and conduction loss of the MOSFET are reduced. This also reduces the voltage stress of the secondary-side rectifier diode. However, this increases the voltage stress on the MOSFET. Therefore, V_{RO} should be determined by a trade-off between the voltage stresses of the MOSFET and diode. It is typical to set V_{RO} such that $V_{DS,nom}$ and $V_{D,nom}$ are 75~85% of their voltage ratings.

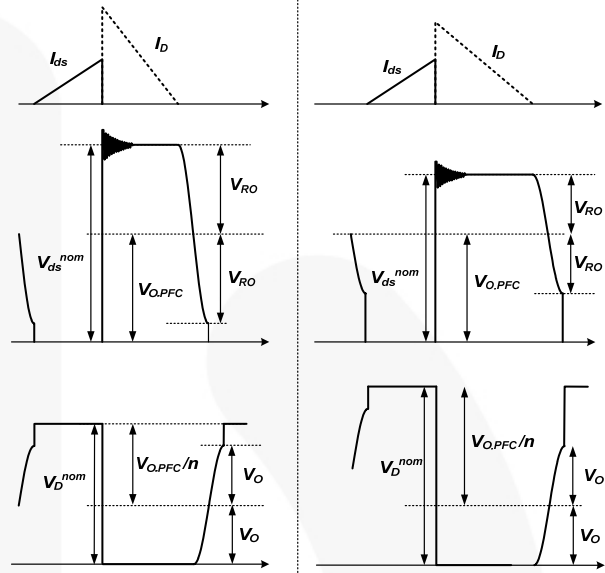
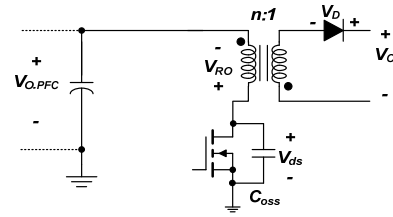


Figure 10. Typical Waveforms of QR Flyback Converter

(Design Example) Assuming 650V MOSFET and 150V Diode are used for primary side and secondary side, respectively, with 18% voltage margin:

$$0.82 \cdot 650 > V_{DS}^{nom} = V_{O,PFC} + V_{RO}$$

$$\therefore V_{RO} < 0.82 \cdot 650 - V_{O,PFC} = 133\text{V}$$

$$0.82 \cdot 150 > V_D^{nom} = V_O + \frac{V_{O,PFC}}{V_{RO}}(V_O + V_F)$$

$$\therefore V_{RO} > V_{DS}^{nom} = \frac{V_{O,PFC}}{0.82 \cdot 150 - V_O}(V_O + V_F) = 106\text{V}$$

V_{RO} is determined as 130V.

3.2.2. Transformer Design

Figure 11 shows the typical switching timing of a quasi-resonant converter. The sum of MOSFET conduction time (t_{ON}), diode conduction time (t_D), and drain voltage falling time (t_F) is the switching period (t_S). To determine the primary-side inductance (L_m), the following parameters should be determined first.

Minimum Switching Frequency ($f_{S,QRmin}$)

The minimum switching frequency occurs at the minimum input voltage and full-load condition, which should be higher than 20kHz to avoid audible noise. By increasing $f_{S,QRmin}$, the transformer size can be reduced. However, this results in increased switching losses. Determine $f_{S,QRmin}$ by a trade-off between switching losses and transformer size. Typically $f_{S,QRmin}$ is set to around 50kHz.

Falling Time of the MOSFET Drain Voltage (t_F)

As shown in Figure 11, the MOSFET drain voltage fall time is half of the resonant period of the MOSFET's effective output capacitance and primary-side inductance. The typical value for t_F is 0.6~1.2 μ s.

Non-Conduction Time of the MOSFET (t_{OFF})

FL6300A has a minimum non-conduction time of MOSFET (8 μ s), during which turning on the MOSFET is prohibited. To maximize the efficiency, it is necessary to turn on the MOSFET at the first valley of MOSFET drain-to-source voltage at heavy-load condition. Therefore, the MOSFET non-conduction time at heavy load condition should be larger than 8 μ s.

Although QR flyback is operated in PFC end for normal operation; when D_{max} is calculated to meet all input conditions, it should take into account the minimum input voltage of V_{LINE} due to the start sequence between PFC and QR flyback at startup.

After determining $f_{S,QR}^{min}$ and t_F , the maximum duty cycle is calculated as:

$$D_{max} = \frac{V_{RO}}{V_{LINE} + V_{RO}} (1 - f_{S,QR}^{min} \cdot t_F) \quad (20)$$

The primary-side inductance is obtained as:

$$L_m = \frac{\eta_{QR} \cdot (V_{LINE} \cdot D_{max})^2}{2 \cdot f_{S,QR}^{min} \cdot P_{OUT}} \quad (21)$$

Once L_m is determined, the maximum peak current and RMS current of the MOSFET in normal operation are obtained as:

$$I_{DS}^{PK} = \frac{V_{LINE} \cdot D_{max}}{L_m \cdot f_{S,QR}^{min}} \quad (22)$$

$$I_{DS}^{RMS} = I_{DS}^{PK} \sqrt{\frac{D_{max}}{3}} \quad (23)$$

The MOSFET non-conduction time at heavy load is obtained as:

$$t_{OFF} = \frac{(1 - D_{max})}{f_{S,QR}^{min}} \quad (24)$$

To guarantee the first valley switching at heavy-load condition, t_{OFF} should be larger than 8 μ s.

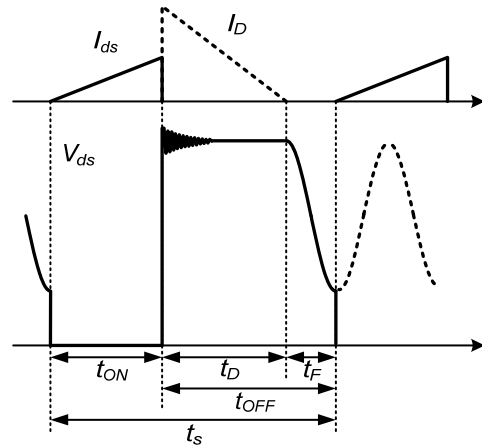


Figure 11. Switching Timing of QR Flyback Converter

When designing the transformer, the maximum flux density (B) swing in normal operation as well as the maximum flux density (B_{max}) in transient should be considered. The maximum flux density swing in normal operation is related to the hysteresis loss in the core, while the maximum flux density in transient is related to the core saturation.

The minimum number of turns for the transformer primary side to avoid over temperature in the core is given by:

$$N_p^{min} = \frac{L_m \cdot I_{DS}^{PK}}{A_e \cdot \Delta B} \quad (25)$$

where B is the maximum flux density swing in Tesla. If there is no reference data, use $B = 0.25 \sim 0.30T$.

Once the minimum number of turns for the primary side is determined, calculate the proper integer for N_s so that the resulting N_p is larger than N_p^{min} as:

$$N_p = n \cdot N_s > N_p^{min} \quad (26)$$

The number of turns of the auxiliary winding for V_{DD} is given as:

$$N_{AUX} = \frac{V_{DD}^{nom} + V_{FA}}{(V_O + V_F)} \cdot N_s \quad (27)$$

where V_{DD}^{nom} is the nominal V_{DD} voltage, typically 18V, and V_{FA} is forward-voltage drop of V_{DD} diode.

Once the number of turns of the primary winding is determined, the maximum flux density when the drain current reaches its pulse-by-pulse current limit level should be checked to guarantee the transformer is not saturated during transient or fault condition.

The maximum flux density (B_{max}) when drain current reaches I_{DS}^{PK} is given as:

$$B_{max} = \frac{L_m \cdot I_{DS}^{PK}}{A_e \cdot N_p} < B_{sat} \quad (28)$$

B_{max} should be smaller than the saturation flux density. If there is no reference data, use $B_{sat} = 0.35 \sim 0.40T$.

(Design Example) Setting the minimum frequency is 50kHz and the falling time is $0.8\mu\text{s}$:

$$D_{\max} = \frac{V_{RO}}{V_{LINE} + V_{RO}} (1 - f_{S,QR}^{\min} \cdot t_F)$$

$$= \frac{130}{127 + 130} (1 - 50 \times 10^3 \cdot 0.8 \times 10^{-6}) = 0.48$$

$$L_m = \frac{\eta_{QR} \cdot (V_{LINE} \cdot D_{\max})^2}{2 \cdot f_{S,QR}^{\min} \cdot P_{OUT}}$$

$$= \frac{0.95 \cdot (127 \cdot 0.48)^2}{2 \cdot 50 \times 10^3 \cdot 70} = 500\mu\text{F}$$

$$I_{DS}^{PK} = \frac{127 \cdot 0.48}{500 \times 10^{-6} \cdot 50 \times 10^3} = 2.52\text{A}$$

$$t_{OFF} = \frac{(1 - D_{\max})}{f_{S,QR}^{\min}} = \frac{1 - 0.48}{50 \times 10^3} = 10\mu\text{s}$$

Assuming EER3124 ($A_e=102\text{mm}^2$) core is used and the flux swing is 0.29T

$$N_p^{\min} = \frac{L_m \cdot I_{DS}^{PK}}{A_e \cdot \Delta B} = \frac{500 \times 10^{-6} \cdot 2.52}{102 \times 10^{-6} \cdot 0.29} = 41.8$$

$$N_p = n \cdot N_s = 5.3 \cdot 8 = 42.4 > N_p^{\min}$$

$$N_{AUX} = \frac{V_{DD}^{nom} + V_{FA}}{(V_O + V_F)} \cdot N_s = \frac{18 + 1.2}{24.5} \cdot 8 = 6.3$$

Assuming the pulse-by-pulse current limit for PFC output voltage is 120% of peak drain current at heavy load:

$$B_{\max} = \frac{L_m \cdot I_{DS}^{PK}}{A_e \cdot N_p} = \frac{500 \cdot 2.52 \cdot 1.2}{102 \cdot 42} = 0.34\text{T}$$

3.2.3. Design the Valley Detection Circuit

Figure 12 shows the DET pin circuitry. The DET pin is connected to an auxiliary winding by R_{DET} and R_A . The voltage divider is used for the following purposes:

- Detect the valley voltage of the switching waveform for valley voltage switching. This ensures QR operation, minimizes switching losses, and reduces EMI.
- Produce an offset to compensate the threshold voltage of the peak current limit to provide a constant power limit. The offset is generated in accordance with the input voltage with the PWM signal enabled.
- A voltage comparator and a 2.5V reference voltage provide output OVP. The ratio of the divider determines the output voltage level to stop the gate.

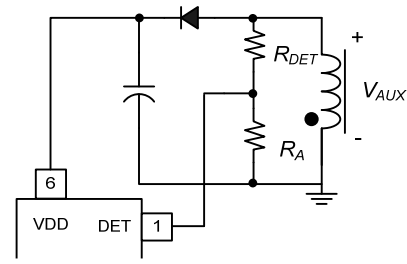


Figure 12. Detection Pin Section

First, determine the ratio of the voltage divider resistors. The ratio of the divider determines what output voltage level to stop gate. In Figure 13, the sampling voltage V_S is:

$$V_S = \frac{N_A}{N_S} \cdot V_O \cdot \frac{R_A}{R_{DET} + R_A} < 2.5\text{V} \quad (29)$$

where N_A is the number of turns for the auxiliary winding and N_S is the number of turns for the secondary winding.

Figure 14 shows the internal valley detection block and the output voltage OVP detection block of FL6300A using auxiliary winding to detect V_O . The internal timer (minimum t_{OFF} time) prevents the system frequency from being too high. First valley switching is activated after minimum t_{OFF} time of $8\mu\text{s}$.

The nominal voltage of V_S is designed around 80% of the reference voltage 2.5V; thus, the recommended value for V_S is 1.9V~2.1V. The output over-voltage protection works by the sampling voltage after the switching-off sequence. A $4\mu\text{s}$ blanking time ignores the leakage inductance ringing. If the DET pin OVP is triggered, the power system enters latch mode until AC power is removed.

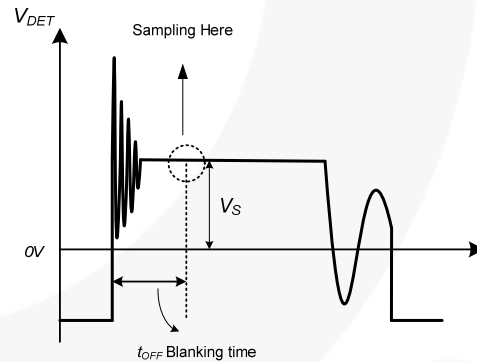


Figure 13. Voltage Sampled After $4\mu\text{s}$ Blanking Time After Switch-Off Sequence

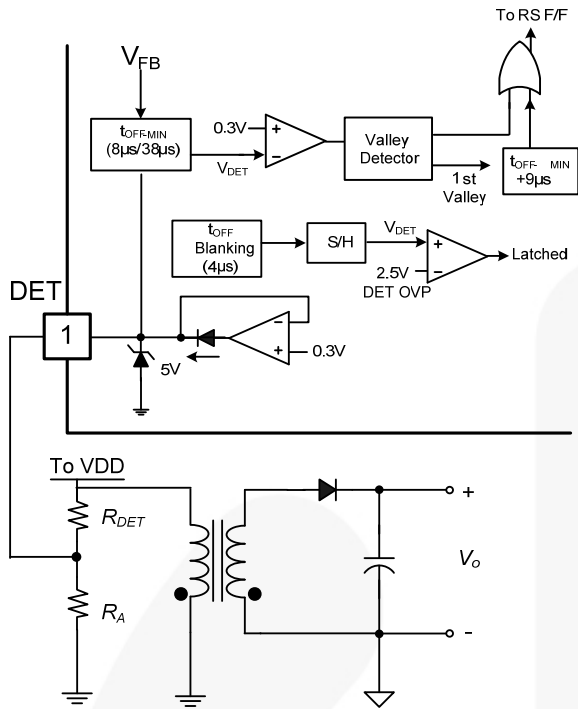


Figure 14. Output Voltage Detection Block

Once the secondary-side switching current discharges to zero, a valley signal is generated on the DET pin. It detects the valley voltage of the switching waveform to achieve the valley voltage switching. When the voltage of auxiliary winding V_{AUX} is negative (as defined in Figure 12), the DET pin voltage is clamped to 0.3V. R_{DET} is recommended as 150k Ω to 220k Ω to achieve valley voltage switching. After the platform voltage V_S in Figure 13 is determined, R_A can be calculated by Equation 14.

(Design Example) Setting R_{DET} is 200k Ω and V_S is around 80% of the reference voltage 2.5V:

$$V_S = \frac{N_A}{N_S} \cdot V_O \cdot \frac{R_A}{R_{DET} + R_A} = 2.1V$$

$$R_A = \frac{2.1 \times R_{DET}}{\frac{N_A}{N_S} \times V_O - 2.1} = 26.4k\Omega$$

3.2.4. Current-Sensing Resistor for PFC

FL6300A has pulse-by-pulse current limit function. It is typical to set the pulse-by-current limit level at 20~30% higher than the maximum inductor current:

$$R_{CS1} = \frac{0.8}{I_{DS}^{PK}(1 + K_{MARGIN})} \quad (30)$$

where K_{MARGIN} is the margin factor and 0.8V is the cycle-by-cycle current limit threshold.

(Design Example) Choosing the margin factor as 35%, the sensing resistor is selected as:

$$R_{CS1} = \frac{0.8}{I_{DS}^{PK}(1 + K_{MARGIN})} = \frac{0.8}{2.52(1 + 0.35)} = 0.23\Omega$$

3.2.5. Design the Feedback Circuit

Figure 15 is a typical feedback circuit mainly consisting of an op-amp and a photo-coupler. R_H and R_L form a voltage divider for output voltage regulation. R_F and C_F are adjusted for control-loop compensation. A small-value RC filter (e.g. $R_{FB} = 100$, $C_{FB} = 1nF$) placed from the FB pin to GND can increase stability substantially. The maximum source current of the FB pin is about 1.2mA. The phototransistor must be capable of sinking this current to pull the FB level down at no load. The value of the biasing resistor, R_{BIAS} , is determined as:

$$\frac{V_{OP} - V_{OPD}}{R_{BIAS}} \cdot CTR > 1.2 \times 10^{-3} \quad (31)$$

where V_{OPD} is the drop voltage of photodiode, about 1.2V; V_{OP} is the output voltage of operational amplifier (assuming about 2.5V); and CTR is the current transfer rate of the opto-coupler.

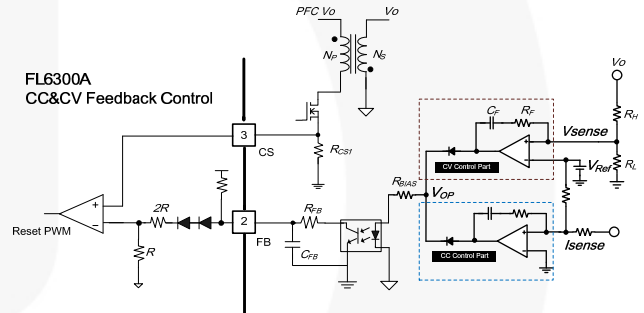


Figure 15. Feedback Circuit

The constant voltage and current output is adapted by measuring the actual output voltage and current with some external passive components and op-amp in the reference board. Because the output load, the High Bright LED (HB LED), and some passive components effect the ambient temperature, use the feedback path for stable operation.

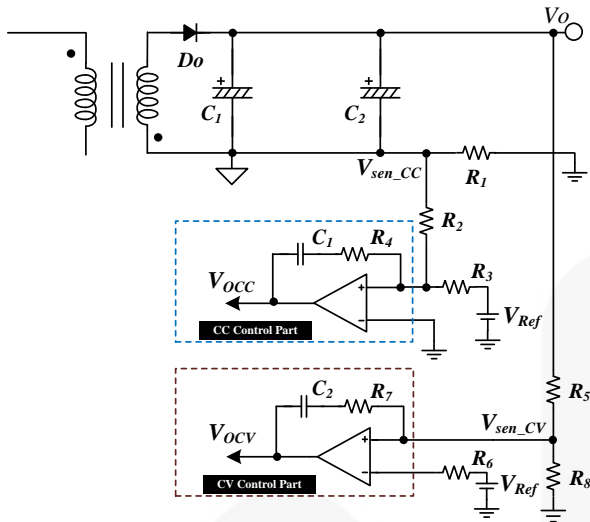


Figure 16. Feedback Circuit for CC/CV Operation

$$V_{OCV} = V_{sen_CV} + \frac{R_7}{R_6}(V_{sen_CV} - V_{ref}) + \frac{1}{C_2} \frac{1}{R_6} \int (V_{sen_CV} - V_{ref}) dt \quad (32)$$

where the V_{sen_CV} means the sensing output voltage from the output stage and is divided by R_4 and R_8 resistor.

Sensing resistor R_4 and its value directly effect the CC control block output.

Normally, the CC block is more dominate than the CV block in steady state and the CV block acts as the Over-Voltage Protection (OVP) at transient or abnormal mode, such as no load condition.

The output signal of CC block is determined as:

$$V_{OCC} = R_4 \left(\frac{V_{sen_CC}}{R_2} - \frac{V_{ref}}{R_3} \right) + \frac{1}{C_1} \int \left(\frac{V_{sen_CC}}{R_2} - \frac{V_{ref}}{R_3} \right) dt \quad (33)$$

3.3. Schematic of the Evaluation Board

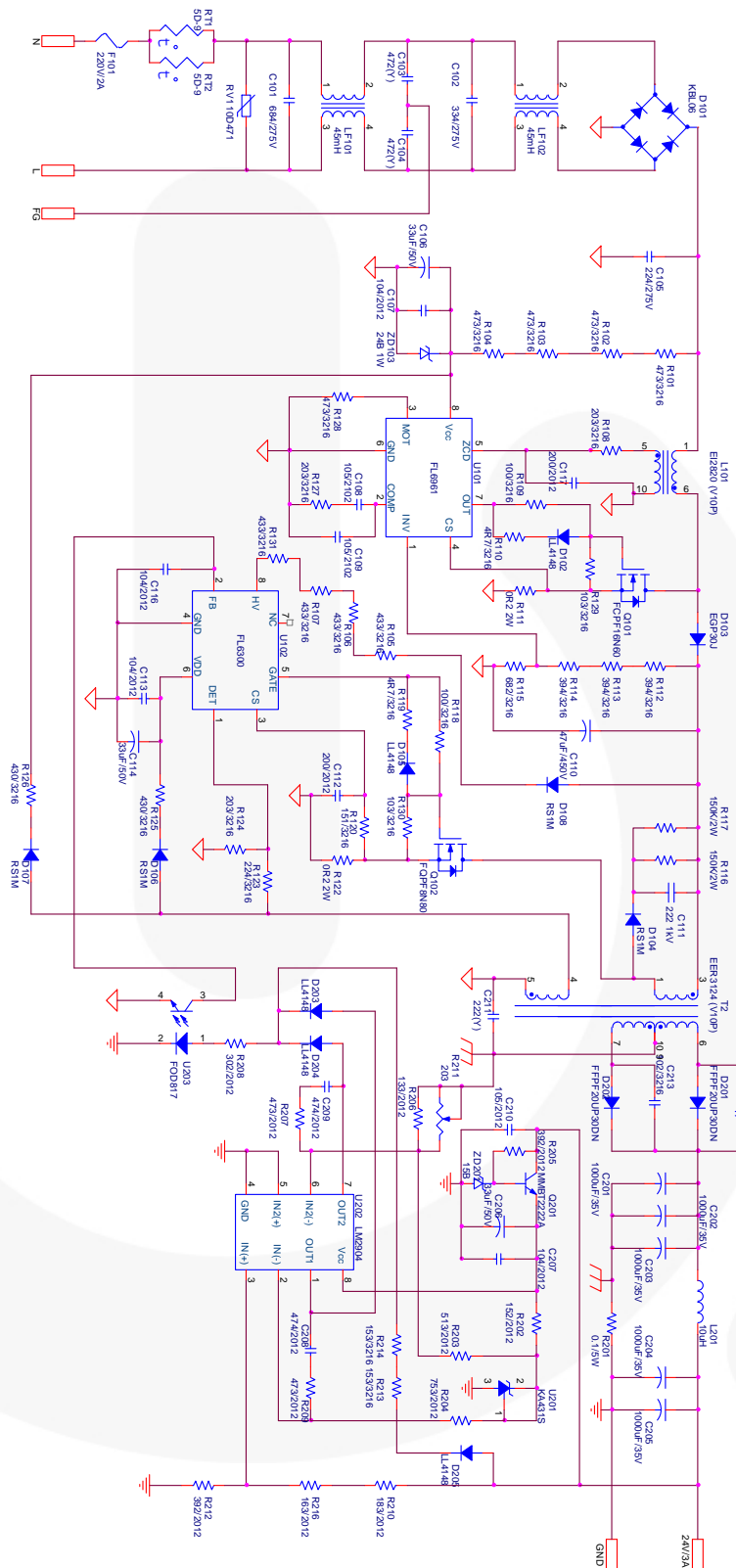


Figure 17. Evaluation Board Schematic

3.4. Bill of Materials

Item No.	Part Reference	Value	Qty.	Description (Manufacturer)
1	U101	FL6961	1	CRM PFC Controller (Fairchild Semiconductor)
2	U102	FL6300A	1	QR PWM Controller (Fairchild Semiconductor)
3	Q101	FCPF20N60	1	600V/20A MOSFET (Fairchild Semiconductor)
4	Q102	FQPF8N80	1	800V/8A MOSFET (Fairchild Semiconductor)
5	D201,D202	FFPF20UP30DN	2	Ultra-Fast Recovery Power Rectifier (Fairchild Semiconductor)
6	D103	EGP30J	1	600V/3A Ultra-Fast Recovery Diode (Fairchild Semiconductor)
7	D104,D106,D107,D108	RS1M	4	1000V/1A Ultra-Fast Recovery Diode (Fairchild Semiconductor)
8	D101	KBL06	1	Bridge Diode (Fairchild Product)
9	Q201	MMBT2222A	1	General-Purpose Transistor (Fairchild Semiconductor)
10	U202	LM2904	1	Dual Op Amp (Fairchild Semiconductor)
11	U203	FOD817	1	Opto-Coupler (Fairchild Semiconductor)
12	U201	KA431S	1	Shunt Rregulator (Fairchild Semiconductor)
13	ZD103	24B 1W	1	Zener Diode (Fairchild Semiconductor)
14	ZD201	15B	1	Zener Diode (Fairchild Semiconductor)
15	D102,D105,D203,D204, D205	LL4148	5	General-Purpose Diode (Fairchild Semiconductor)
16	C101	684/275V	1	X – Capacitor
17	C102	334/275V	1	X – Capacitor
18	C105	224/275V	1	X – Capacitor
19	C103,C104	472(Y)	2	Y – Capacitor
20	C211	222(Y)	1	Y – Capacitor
21	C106,C114,C206	33 μ F/50V	3	Electrolytic Capacitor, 105°C
22	C107,C113,C116,C207	104/2012	4	SMD Capacitor 2012
23	C108,C109, C210	105/2102	3	SMD Capacitor 2012
24	C110	68 μ F/450V	1	Electrolytic Capacitor, 105°C
25	C111	222 1kV	1	Ceramic-Capacitor
26	C112,C117	200/2012	2	SMD Capacitor 2012
27	C201,C202,C203,C204, C205	1000 μ F/35V	5	Electrolytic Capacitor, 105°C
28	C208,C209	474/2012	2	SMD Capacitor 2012
29	C212,C213	102/3216	2	SMD Capacitor 3216
30	F101	220V/2A	1	Fuse
31	L101	EI2820	1	PFC Inductor (V10P), 450 μ H
32	L201	10 μ H	1	Stick Inductor
33	LF101,LF102	45mH	2	Line Filter
34	R101,R102,R103,R104	104/3216	4	SMD Resistor 3216
35	R128	393/3216	1	SMD Resistor 3216
36	R105,R106,R107,R131	433/3216	4	SMD Resistor 3216
37	R108,R124,R127	203/3216	3	SMD Resistor 3216
38	R109,R118	100/3216	2	SMD Resistor 3216
39	R110,R119	4R7/3216	2	SMD Resistor 3216
40	R111,R122	0R2 2W	2	Metal Film Resistor 2W
41	R112,R113,R114	394/3216	3	SMD Resistor 3216
42	R115	682/3216	1	SMD Resistor 3216
43	R213,R214	153/3216	2	SMD Resistor 3216
44	R116,R117	150K Ω /2W	2	Metal Oxide Film Resistor 2W

Bill Of Materials (Continued)

Item No.	Part Reference	Value	Qty.	Description (Manufacturer)
45	R120	151/3216	1	SMD Resistor 3216
46	R123	224/3216	1	SMD Resistor 3216
47	R125,R126	430/3216	2	SMD Resistor 3216
48	R129,R130	103/3216	2	SMD Resistor 3216
49	R201	0.1/5W	1	MPR Resistor 5W
50	R202	152/2012	1	SMD Resistor 2012
51	R203	513/2012	1	SMD Resistor 2012
52	R204	753/2012	1	SMD Resistor 2012
53	R205	392/2012	1	SMD Resistor 2012
54	R206	133/2012	1	SMD Resistor 2012
55	R207,R209	473/2012	2	SMD Resistor 2012
56	R208	302/2012	1	SMD Resistor 2012
57	R212	432/2012	1	SMD Resistor 2012
58	R210	153/2012	1	SMD Resistor 2012
59	R216	223/2012	1	SMD Resistor 2012
60	R211	20k Ω	1	Variable Resistor
61	RT1,RT2	5D-9	2	NTC
62	T2	EER3124	1	QR Transformer(V10P), 500 μ H
63	RV1	10D471	1	VARISTOR

4.0 Related Datasheets

[FL6961](#) - *Single Stage Flyback and Boundary Mode PFC Controller for Lighting* –

[FL6300A](#) - *Quasi-Resonant Current Mode PWM Controller for Lighting*

Application Note - [AN-6300 FAN6300/A/H](#) - *Highly Integrated Quasi-Resonant PWM Controller*

Application Note - [AN-6961](#) - *Critical Conduction Mode PFC Controller*

DISCLAIMER

FAIRCHILD SEMICONDUCTOR RESERVES THE RIGHT TO MAKE CHANGES WITHOUT FURTHER NOTICE TO ANY PRODUCTS HEREIN TO IMPROVE RELIABILITY, FUNCTION, OR DESIGN. FAIRCHILD DOES NOT ASSUME ANY LIABILITY ARISING OUT OF THE APPLICATION OR USE OF ANY PRODUCT OR CIRCUIT DESCRIBED HEREIN; NEITHER DOES IT CONVEY ANY LICENSE UNDER ITS PATENT RIGHTS, NOR THE RIGHTS OF OTHERS.

LIFE SUPPORT POLICY

FAIRCHILD'S PRODUCTS ARE NOT AUTHORIZED FOR USE AS CRITICAL COMPONENTS IN LIFE SUPPORT DEVICES OR SYSTEMS WITHOUT THE EXPRESS WRITTEN APPROVAL OF THE PRESIDENT OF FAIRCHILD SEMICONDUCTOR CORPORATION.

As used herein:

1. Life support devices or systems are devices or systems which, (a) are intended for surgical implant into the body, or (b) support or sustain life, or (c) whose failure to perform when properly used in accordance with instructions for use provided in the labeling, can be reasonably expected to result in significant injury to the user.
2. A critical component is any component of a life support device or system whose failure to perform can be reasonably expected to cause the failure of the life support device or system, or to affect its safety or effectiveness.

ON Semiconductor and  are trademarks of Semiconductor Components Industries, LLC dba ON Semiconductor or its subsidiaries in the United States and/or other countries. ON Semiconductor owns the rights to a number of patents, trademarks, copyrights, trade secrets, and other intellectual property. A listing of ON Semiconductor's product/patent coverage may be accessed at www.onsemi.com/site/pdf/Patent-Marking.pdf. ON Semiconductor reserves the right to make changes without further notice to any products herein. ON Semiconductor makes no warranty, representation or guarantee regarding the suitability of its products for any particular purpose, nor does ON Semiconductor assume any liability arising out of the application or use of any product or circuit, and specifically disclaims any and all liability, including without limitation special, consequential or incidental damages. Buyer is responsible for its products and applications using ON Semiconductor products, including compliance with all laws, regulations and safety requirements or standards, regardless of any support or applications information provided by ON Semiconductor. "Typical" parameters which may be provided in ON Semiconductor data sheets and/or specifications can and do vary in different applications and actual performance may vary over time. All operating parameters, including "Typicals" must be validated for each customer application by customer's technical experts. ON Semiconductor does not convey any license under its patent rights nor the rights of others. ON Semiconductor products are not designed, intended, or authorized for use as a critical component in life support systems or any FDA Class 3 medical devices or medical devices with a same or similar classification in a foreign jurisdiction or any devices intended for implantation in the human body. Should Buyer purchase or use ON Semiconductor products for any such unintended or unauthorized application, Buyer shall indemnify and hold ON Semiconductor and its officers, employees, subsidiaries, affiliates, and distributors harmless against all claims, costs, damages, and expenses, and reasonable attorney fees arising out of, directly or indirectly, any claim of personal injury or death associated with such unintended or unauthorized use, even if such claim alleges that ON Semiconductor was negligent regarding the design or manufacture of the part. ON Semiconductor is an Equal Opportunity/Affirmative Action Employer. This literature is subject to all applicable copyright laws and is not for resale in any manner.

PUBLICATION ORDERING INFORMATION

LITERATURE FULFILLMENT:

Literature Distribution Center for ON Semiconductor
19521 E. 32nd Pkwy, Aurora, Colorado 80011 USA
Phone: 303-675-2175 or 800-344-3860 Toll Free USA/Canada
Fax: 303-675-2176 or 800-344-3867 Toll Free USA/Canada
Email: orderlit@onsemi.com

N. American Technical Support: 800-282-9855 Toll Free
USA/Canada
Europe, Middle East and Africa Technical Support:
Phone: 421 33 790 2910
Japan Customer Focus Center
Phone: 81-3-5817-1050

ON Semiconductor Website: www.onsemi.com
Order Literature: <http://www.onsemi.com/orderlit>
For additional information, please contact your local
Sales Representative