



Is Now Part of



**ON Semiconductor®**

To learn more about ON Semiconductor, please visit our website at  
[www.onsemi.com](http://www.onsemi.com)

ON Semiconductor and the ON Semiconductor logo are trademarks of Semiconductor Components Industries, LLC dba ON Semiconductor or its subsidiaries in the United States and/or other countries. ON Semiconductor owns the rights to a number of patents, trademarks, copyrights, trade secrets, and other intellectual property. A listing of ON Semiconductor's product/patent coverage may be accessed at [www.onsemi.com/site/pdf/Patent-Marking.pdf](http://www.onsemi.com/site/pdf/Patent-Marking.pdf). ON Semiconductor reserves the right to make changes without further notice to any products herein. ON Semiconductor makes no warranty, representation or guarantee regarding the suitability of its products for any particular purpose, nor does ON Semiconductor assume any liability arising out of the application or use of any product or circuit, and specifically disclaims any and all liability, including without limitation special, consequential or incidental damages. Buyer is responsible for its products and applications using ON Semiconductor products, including compliance with all laws, regulations and safety requirements or standards, regardless of any support or applications information provided by ON Semiconductor. "Typical" parameters which may be provided in ON Semiconductor data sheets and/or specifications can and do vary in different applications and actual performance may vary over time. All operating parameters, including "Typicals" must be validated for each customer application by customer's technical experts. ON Semiconductor does not convey any license under its patent rights nor the rights of others. ON Semiconductor products are not designed, intended, or authorized for use as a critical component in life support systems or any FDA Class 3 medical devices or medical devices with a same or similar classification in a foreign jurisdiction or any devices intended for implantation in the human body. Should Buyer purchase or use ON Semiconductor products for any such unintended or unauthorized application, Buyer shall indemnify and hold ON Semiconductor and its officers, employees, subsidiaries, affiliates, and distributors harmless against all claims, costs, damages, and expenses, and reasonable attorney fees arising out of, directly or indirectly, any claim of personal injury or death associated with such unintended or unauthorized use, even if such claim alleges that ON Semiconductor was negligent regarding the design or manufacture of the part. ON Semiconductor is an Equal Opportunity/Affirmative Action Employer. This literature is subject to all applicable copyright laws and is not for resale in any manner.

# AN-8030

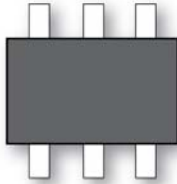

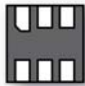
## MicroPak2™ Package Applications Guide

### Introduction

Fairchild Semiconductor is a global supplier of high-performance semiconductors, offering products used in a wide range of applications (mobile phones, PDAs, etc). Fairchild's Signal Path and TinyLogic® family consists of a broad spectrum of MicroPak™ packages with either 6 or 8 leads (see Table 1). The MicroPak2™ package is Fairchild's latest addition to the family. With 1mm × 1mm body size and 0.35mm pitch, this package is a smaller version of the MicroPak 6 package.

This applications guide provides some general guidelines for developing land pattern designs, stencil design, and board-level assembly processes for the MicroPak2™ package. These guidelines are very general in nature and, since manufacturing practices and end-use applications vary, they should be used as starting points to further optimize designs and processes for specific manufacturing practices.

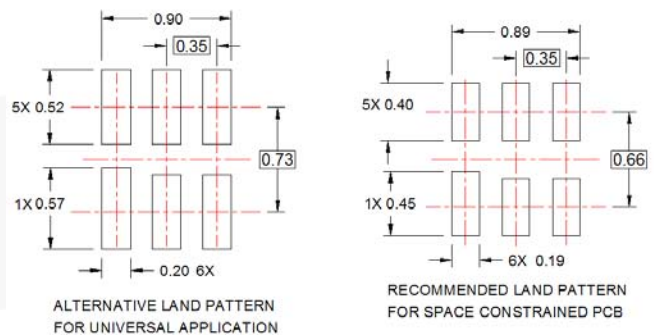
**Table 1. Package Comparison**

Fairchild Offers a Variety of Industry Leading Packages			
Package Migration Comparison and Options			
Measurements (mm)	SC70-6	MicroPak-6	MicroPak2
Mounted Width	2.10	1.00	1.0
Body Width	1.25	1.00	1.0
Length	2.00	1.45	1.0
Height	0.90	0.55	0.55
Pin Pitch	0.65	0.50	0.35

### Application Board Design

#### Land Pattern Design

Two land pattern designs are recommended for the MicroPak2 package. The first is a Universal Pad Design which is to be used when board space availability is not a constraining factor in board design. The second design, the Space Constrained Design, is recommended for those applications where board space is limited. The dimensions for both types of pad designs are shown in Figure 1.



**Figure 1. Schematic of Dimensions of Pad Designs**

# Solder Paste Stencil Printing and Assembly Process

## Stencil Design

Stencil design is instrumental in determining the quality of a solder joint by controlling the amount of solder paste deposited on the substrate land patterns. For the MicroPak2™ package, stencil aperture size-to-land size ratios of 1:1, 0.95:1, and 0.9:1 were investigated for the two recommended land pattern designs; space-constrained land pattern design and universal land pattern design. For a 0.004" stencil, the area ratios for the different-sized apertures range from 0.57 to 0.73. The area ratio of the stencil apertures is a primary factor in determining how well any particular stencil prints solder paste. Area ratio is the ratio between the open area of the stencil aperture and the area of the aperture walls. The higher the area ratio, the higher the transfer efficiency of the solder paste. Transfer efficiency is the percentage of solder paste printed into the aperture that is transferred onto the PCB pad. For paste with type-3 powder size, area ratio experiments have verified that apertures with area ratios of 0.66 or higher are able to print solder paste with transfer efficiencies above 60% with minimal print deposit volume variability (standard deviation  $\leq 10\%$ ).

It is important to emphasize that transfer efficiencies and print volume variability for any stencil printing process is very much dependent upon the printing characteristics of the solder paste used. Based on work done with a lead-free no-clean solder paste with type-3 powder, the following general stencil design recommendations can be made:

- A 4 mil laser-cut, stainless steel stencil with electro-polished trapezoidal walls is recommended.
- It is recommended that universal apertures be the same size as the pads on the PCB (1:1 aperture size to pad size ratio).

- If the universal apertures need to be reduced, reductions of up to 10% were found to be acceptable.
- It is recommended that space constrained apertures be the same size as the pads on the PCB (1:1 aperture size to pad size ratio).
- Reductions in the space constrained apertures should be avoided, but in those cases where a reduction is required, it should be kept to a minimum and not exceed 10%.

## Solder Paste

For lead-free SMT assemblies, a lead-free no-clean solder paste with type-3 powder capable of printing fine features (paste should have good aperture release characteristics) is recommended.

## Assembly Process

Package placement and alignment is dependent on placement equipment and process. Inaccurate placement may result in poor quality solder joints, solder shorts, or in devices being tilted and/or misaligned. Reflow experiments conducted with the MicroPak2™ package have shown that parts only slightly misaligned undergo automatic self-alignment during the reflow process. Self-centering behavior is very solder and process dependent and the customer should conduct experiments to confirm the limits of self centering with their specific solder paste and process.

## Reflow Window

A system board reflow profile depends on the thermal mass of the entire assembly, so it is not practical to define a specific reflow profile just for the MicroPak2™ package. The recommendations made below with respect to reflow window and reflow profiles (Figure 2 and Table 2) are meant to be guidelines to be customized for varying manufacturing practices and applications.

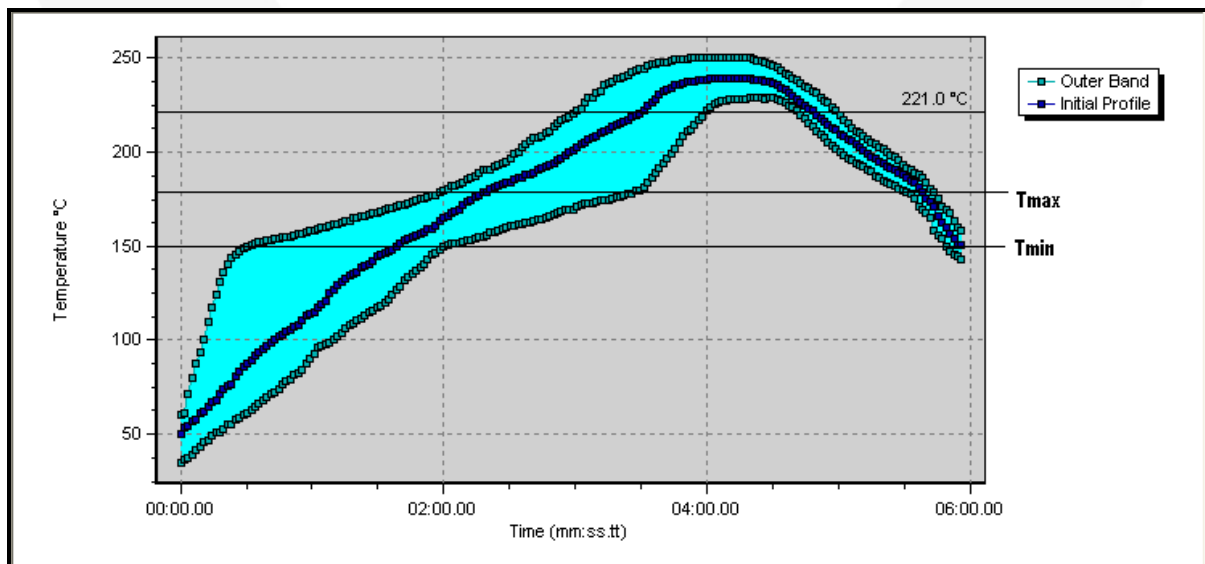


Figure 2. Acceptable Reflow Window

**Table 2. Reflow Window Parameters**

Reflow Window Parameters	Pb-Free
Preheat:	
Temperature Min. ( $T_{MIN}$ )	150°C
Temperature Max. ( $T_{MAX}$ )	180°C
Time	45 to 90 seconds
Time above Liquidus (TAL):	
Temperature	221°C
Time	45 to 90 seconds
Time to Liquidus (TTL)	4 minutes maximum
Peak Temperature	235 – 250°C
Ramp-Up Rate	3°C/s maximum
Cool-Down Rate	6°C/s maximum

**Table 3. Recommended Reflow Profile Parameters**

Recommended Reflow Profile Parameters	Pb-Free
Preheat:	
Temperature Min. ( $T_{MIN}$ )	150°C
Temperature Max. ( $T_{MAX}$ )	180°C
Time	60-70 seconds
Time above Liquidus (TAL):	
Temperature	221°C
Time	60-70 seconds
Time to Liquidus (TTL)	4 minutes maximum
Peak Temperature	235 – 250°C
Ramp-Up Rate	3°C/s maximum
Cool-Down Rate	6°C/s maximum

## Rework Guidelines

Solder joints are not fully exposed in the case of this package style, thereby limiting any form of “retouching.” For defects underneath the package, the whole package needs to be removed. Rework of this style of leadless devices is challenging due to their small size. However, with care and dexterity and following the guidelines below, it can be accomplished.

The rework of this style of packages is further complicated by the types of products in which these components are used. They tend to be mounted on smaller, thinner, more-densely populated PCBs; challenging the rework technician due to part handling and heating difficulties. The proximity of parts adjacent to this package may further complicate this process. Due to the product-dependent complexities, the following provides only a guidelines and a starting point for the development of a successful rework process.

## Inspection Guidelines

After PCB assembly, the package should be inspected using transmission X-ray for the presence of voids, solder balling, or other defects under the package. Cross sectioning may also be required to determine the fillet shape and size and the joint standoff height. *Refer to IPC inspection criteria for leadless devices found in IPC-A610 Rev D Section 8.2.13.*

Although this is a small leadless package, removal and replacement via a hot air rework process is recommended. The following steps are a guideline in developing a successful rework process for the particular PWB.

## Process-Overalls

The process is as follows:

1. Component Removal
2. Site Redress
3. Bumping of PCB
4. Component placement and reflow
5. Inspection

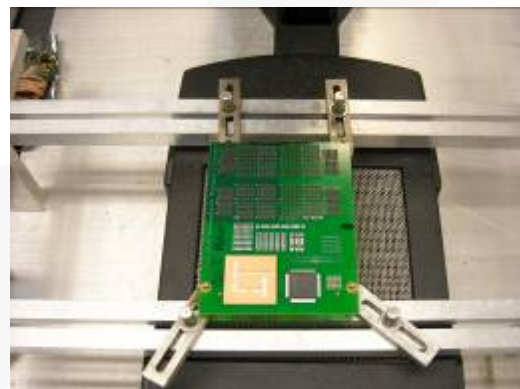
## Bake

Prior to rework, bake the PCB assembly at 125°C for at least 24 hours to remove any residual moisture. Take care on temperature-sensitive components, coatings, etc.

## Component Removal

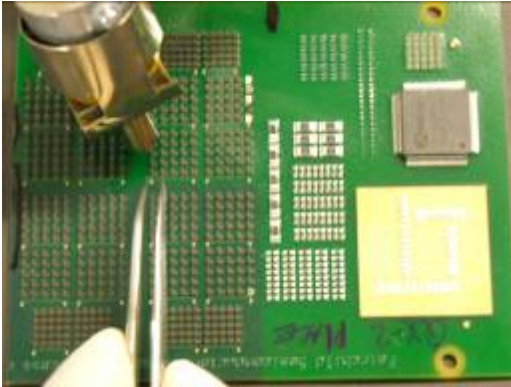
The removal profile of the device should mimic as closely as possible the initial assembly profile. That being said, the time above liquidus can be reduced, as long as the reflow is complete, to speed up the entire rework process.

It is recommended that the PWB be heated from the bottom side (as shown in Figure 3) using a convective heater, and the topside with a hot gas nozzle, applying heat at the component to be removed. A thermocouple on the underside of the PWB should read 150°C as a minimum prior to beginning the removal process.



**Figure 3. Bottom side heating of PCB**

Using a hot air source, remove the device by heating the area of the component. Then, using an ESD pair of tweezers, remove the device (as shown in Figure 4).



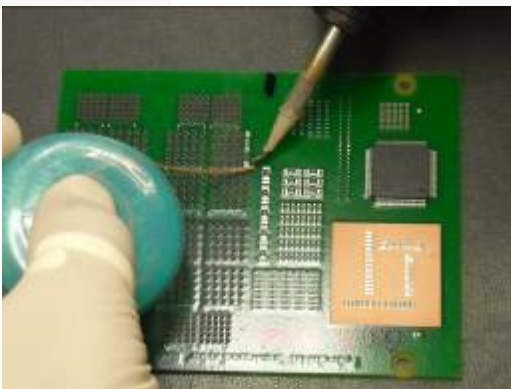
**Figure 4. Removal of Device Using Hot Air Source**

Heating of adjacent components should be minimized to avoid collateral damage both near and on the underside of the board (if components are populated in this area).

Once the joints have reflowed, remove the device with a vacuum pick-up (ESD safe) or tweezers. Due to the small package size, vacuum pressure should be kept below 15" of Hg to prevent premature board or pad lift before all joints have reflowed.

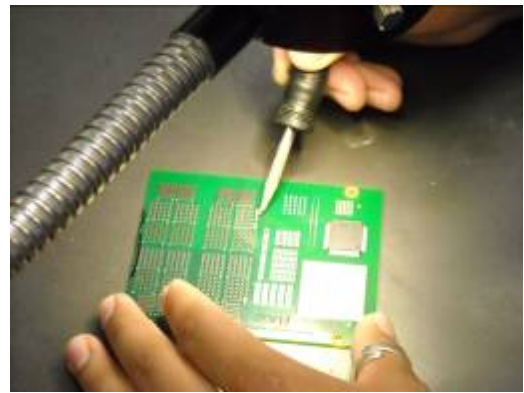
#### **Site Cleaning**

Clean the site on PWB properly, removing residual solder with a combination convection tip and de-soldering braid, as shown in Figure 5.



**Figure 5. Solder Wicking, Site Prep**

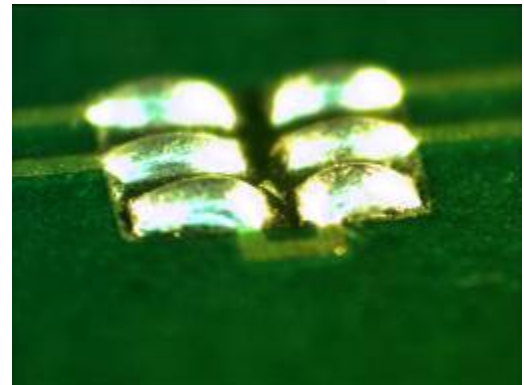
After residual solder removal, clean the lands with a cleaning agent specific to the original type of chemistries used in the original assembly.



**Figure 6. Solder "Bumping" of PCB Lands**

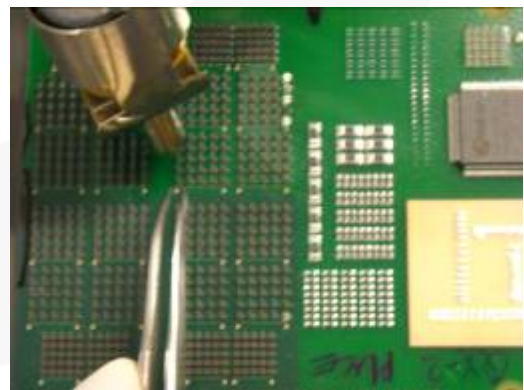
#### **Component Placement and Reflow-Method #1**

"Bump" the pads of the PCB (shown in Figure 6 and Figure 7) by using the correct wire-cored solder and a hand-soldering iron using a small iron tip.



**Figure 7. Figure 7-Solder "Bumped" Pads**

Inspect to make the bumps on the board are uniform.



**Figure 8. Heat Gun Reflow**

Reflow the PCB using a hot air gun and a pair of tweezers to place the bumped device, as shown in Figure 8. This process requires using magnification.

Alternatively, use a time-, distance-, and temperature-controlled hot-air source to do the rework using a time and controlled heat source. See Figure 9.



**Figure 9. Hot Air Rework System Reflow**

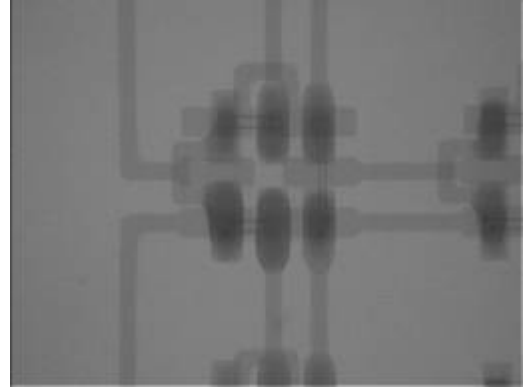
Reflow the PCB using the same profile as that developed for the initial attachment.

### **Cleaning**

After placement and reflow, clean the lands with a cleaning agent specific to the original type of chemistries used in the original assembly.

### **Inspection**

Inspect per the Inspection Guidelines discussed above.



**Figure 10. X-Ray Image of Leadless Device**

## **References**

*Prepared by Cookson Electronics – Assembly Materials, 109 Corporate Blvd., South Plainfield, NJ 07080*

### **DISCLAIMER**

FAIRCHILD SEMICONDUCTOR RESERVES THE RIGHT TO MAKE CHANGES WITHOUT FURTHER NOTICE TO ANY PRODUCTS HEREIN TO IMPROVE RELIABILITY, FUNCTION, OR DESIGN. FAIRCHILD DOES NOT ASSUME ANY LIABILITY ARISING OUT OF THE APPLICATION OR USE OF ANY PRODUCT OR CIRCUIT DESCRIBED HEREIN; NEITHER DOES IT CONVEY ANY LICENSE UNDER ITS PATENT RIGHTS, NOR THE RIGHTS OF OTHERS.

### **LIFE SUPPORT POLICY**

FAIRCHILD'S PRODUCTS ARE NOT AUTHORIZED FOR USE AS CRITICAL COMPONENTS IN LIFE SUPPORT DEVICES OR SYSTEMS WITHOUT THE EXPRESS WRITTEN APPROVAL OF THE PRESIDENT OF FAIRCHILD SEMICONDUCTOR CORPORATION.

As used herein:

1. Life support devices or systems are devices or systems which, (a) are intended for surgical implant into the body, or (b) support or sustain life, or (c) whose failure to perform when properly used in accordance with instructions for use provided in the labeling, can be reasonably expected to result in significant injury to the user.
2. A critical component is any component of a life support device or system whose failure to perform can be

reasonably expected to cause the failure of the life support device or system, or to affect its safety or effectiveness.



ON Semiconductor and  are trademarks of Semiconductor Components Industries, LLC dba ON Semiconductor or its subsidiaries in the United States and/or other countries. ON Semiconductor owns the rights to a number of patents, trademarks, copyrights, trade secrets, and other intellectual property. A listing of ON Semiconductor's product/patent coverage may be accessed at [www.onsemi.com/site/pdf/Patent-Marking.pdf](http://www.onsemi.com/site/pdf/Patent-Marking.pdf). ON Semiconductor reserves the right to make changes without further notice to any products herein. ON Semiconductor makes no warranty, representation or guarantee regarding the suitability of its products for any particular purpose, nor does ON Semiconductor assume any liability arising out of the application or use of any product or circuit, and specifically disclaims any and all liability, including without limitation special, consequential or incidental damages. Buyer is responsible for its products and applications using ON Semiconductor products, including compliance with all laws, regulations and safety requirements or standards, regardless of any support or applications information provided by ON Semiconductor. "Typical" parameters which may be provided in ON Semiconductor data sheets and/or specifications can and do vary in different applications and actual performance may vary over time. All operating parameters, including "Typicals" must be validated for each customer application by customer's technical experts. ON Semiconductor does not convey any license under its patent rights nor the rights of others. ON Semiconductor products are not designed, intended, or authorized for use as a critical component in life support systems or any FDA Class 3 medical devices or medical devices with a same or similar classification in a foreign jurisdiction or any devices intended for implantation in the human body. Should Buyer purchase or use ON Semiconductor products for any such unintended or unauthorized application, Buyer shall indemnify and hold ON Semiconductor and its officers, employees, subsidiaries, affiliates, and distributors harmless against all claims, costs, damages, and expenses, and reasonable attorney fees arising out of, directly or indirectly, any claim of personal injury or death associated with such unintended or unauthorized use, even if such claim alleges that ON Semiconductor was negligent regarding the design or manufacture of the part. ON Semiconductor is an Equal Opportunity/Affirmative Action Employer. This literature is subject to all applicable copyright laws and is not for resale in any manner.

## PUBLICATION ORDERING INFORMATION

### LITERATURE FULFILLMENT:

Literature Distribution Center for ON Semiconductor  
19521 E. 32nd Pkwy, Aurora, Colorado 80011 USA  
**Phone:** 303-675-2175 or 800-344-3860 Toll Free USA/Canada  
**Fax:** 303-675-2176 or 800-344-3867 Toll Free USA/Canada  
**Email:** [orderlit@onsemi.com](mailto:orderlit@onsemi.com)

**N. American Technical Support:** 800-282-9855 Toll Free  
USA/Canada  
**Europe, Middle East and Africa Technical Support:**  
Phone: 421 33 790 2910  
**Japan Customer Focus Center**  
Phone: 81-3-5817-1050

**ON Semiconductor Website:** [www.onsemi.com](http://www.onsemi.com)  
**Order Literature:** <http://www.onsemi.com/orderlit>  
For additional information, please contact your local  
Sales Representative