



Is Now Part of



ON Semiconductor®

To learn more about ON Semiconductor, please visit our website at
www.onsemi.com

ON Semiconductor and the ON Semiconductor logo are trademarks of Semiconductor Components Industries, LLC dba ON Semiconductor or its subsidiaries in the United States and/or other countries. ON Semiconductor owns the rights to a number of patents, trademarks, copyrights, trade secrets, and other intellectual property. A listing of ON Semiconductor's product/patent coverage may be accessed at www.onsemi.com/site/pdf/Patent-Marking.pdf. ON Semiconductor reserves the right to make changes without further notice to any products herein. ON Semiconductor makes no warranty, representation or guarantee regarding the suitability of its products for any particular purpose, nor does ON Semiconductor assume any liability arising out of the application or use of any product or circuit, and specifically disclaims any and all liability, including without limitation special, consequential or incidental damages. Buyer is responsible for its products and applications using ON Semiconductor products, including compliance with all laws, regulations and safety requirements or standards, regardless of any support or applications information provided by ON Semiconductor. "Typical" parameters which may be provided in ON Semiconductor data sheets and/or specifications can and do vary in different applications and actual performance may vary over time. All operating parameters, including "Typicals" must be validated for each customer application by customer's technical experts. ON Semiconductor does not convey any license under its patent rights nor the rights of others. ON Semiconductor products are not designed, intended, or authorized for use as a critical component in life support systems or any FDA Class 3 medical devices or medical devices with a same or similar classification in a foreign jurisdiction or any devices intended for implantation in the human body. Should Buyer purchase or use ON Semiconductor products for any such unintended or unauthorized application, Buyer shall indemnify and hold ON Semiconductor and its officers, employees, subsidiaries, affiliates, and distributors harmless against all claims, costs, damages, and expenses, and reasonable attorney fees arising out of, directly or indirectly, any claim of personal injury or death associated with such unintended or unauthorized use, even if such claim alleges that ON Semiconductor was negligent regarding the design or manufacture of the part. ON Semiconductor is an Equal Opportunity/Affirmative Action Employer. This literature is subject to all applicable copyright laws and is not for resale in any manner.

AN-8024

Applying Fairchild Power Switch (FPS™) FSBH-series to Standby Auxiliary Power Supply

1. Introduction

The highly integrated FSBH-series consists of an integrated current mode Pulse Width Modulator (PWM) and an avalanche-rugged 700V SenseFET. It is specifically designed for high-performance offline Switch-Mode Power Supplies (SMPS) with minimal external components.

The integrated PWM controller features include a proprietary green-mode function that provides off-time modulation to linearly decrease the switching frequency at light-load conditions to minimize standby power consumption. The PWM controller is manufactured using the BiCMOS process to further reduce power consumption. The green and burst modes function with a low operating current (2.5mA in green mode) to maximize the light load efficiency so that the power supply can meet stringent standby power regulations.

The FSBH-series has built-in synchronized slope compensation to achieve stable peak-current-mode control. The proprietary external line compensation ensures constant output power limit over a wide AC input voltage range, from 90V_{AC} to 264V_{AC} and helps optimize the power stage.

Many protection functions, such as open-loop / overload protection (OLP), over-voltage protection (OVP), brownout protection, and over-temperature protection (OTP); are fully integrated into FSBH-series, which improves the SMPS reliability without increasing the system cost.

This application note presents design consideration to apply FSBH-series to a standby auxiliary power supply with single output. It covers designing the transformer, selecting the components, feedback loop design, and design tips to maximize efficiency. For multi-output applications, refer to Fairchild application note AN-4137.

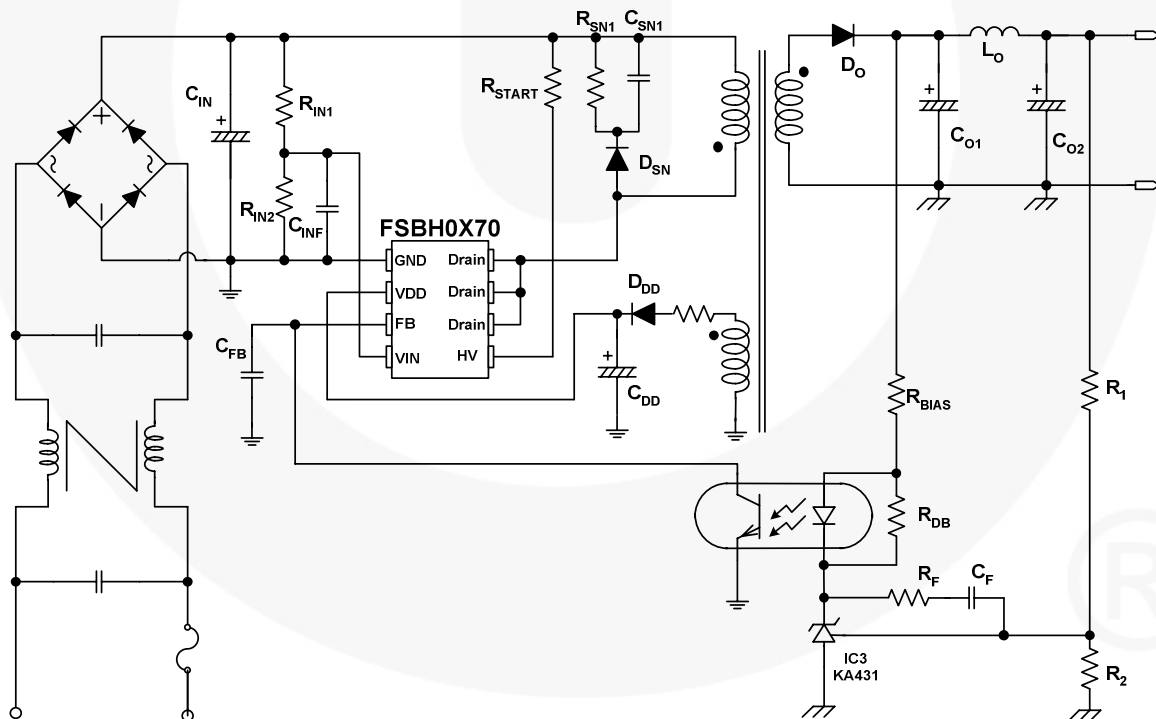


Figure 1. Typical Application Circuit

2. Design Considerations

Flyback converters have two kinds of operation modes; Continuous Conduction Mode (CCM) and Discontinuous Conduction Mode (DCM). CCM and DCM each has advantages and disadvantages. In general, DCM provides better switching conditions for the rectifier diodes, since the diodes are operating at zero current just before becoming reverse biased and the reverse recovery loss is minimized. The transformer size can be reduced using DCM because the average energy storage is low compared to CCM. However, DCM inherently causes high RMS current, which increases the conduction loss of the MOSFET severely for low line condition. Thus, especially for standby auxiliary power supply applications with low output voltage where Schottky diode without reverse recovery can be used; it is typical to design the converter such that the converter operates in CCM to maximize efficiency.

In this section, a design procedure is presented using Figure 1 as a reference. An offline SMPS with 20W/5V nominal output power has been selected as a design example.

[STEP-1] Define the System Specifications

When designing a power supply with peak load current profile, the following specifications should be determined:

- Line voltage range (V_{LINE}^{MIN} and V_{LINE}^{MAX})
- Line frequency (f_L)
- Nominal output power (P_O)
- Estimated efficiencies for nominal load (η): The power conversion efficiency must be estimated to calculate the input powers for nominal load condition. If no reference data is available, set $\eta = 0.7\sim 0.75$ for low-voltage output applications and $\eta = 0.8\sim 0.85$ for high-voltage output applications.

With the estimated efficiency, the input power for peak load condition is given by:

$$P_{IN} = \frac{P_O}{\eta} \quad (1)$$

(Design Example) The specifications of the target system are:

- $V_{LINE}^{MIN} = 90V_{AC}$ and $V_{LINE}^{MAX} = 264V_{AC}$
- Line frequency $f_L = 60Hz$ ($90V_{AC}$) and $50Hz$ ($264V_{AC}$)
- Nominal output power $P_O = 20W$ ($5V/4A$)
- Estimated efficiency: $\eta = 0.77$

$$P_{IN} = \frac{P_O}{\eta} = \frac{20}{0.77} = 26W$$

[STEP-2] Determine the Input Capacitor (C_{IN}) and the Input Voltage Range

It is typical to select the input capacitor as $2\sim 3\mu F$ per watt of peak input power for universal input range ($85\sim 265V_{AC}$) and $1\mu F$ per watt of peak input power for European input range ($195V\sim 265V_{AC}$). With the input capacitor chosen, the minimum input capacitor voltage at nominal load condition is obtained as:

$$V_{IN}^{MIN} = \sqrt{2 \cdot (V_{LINE}^{MIN})^2 - \frac{P_{IN} \cdot (1 - D_{CH})}{C_{IN} \cdot f_L}} \quad (2)$$

where D_{CH} is the input capacitor charging duty ratio defined as shown in Figure 2, which is typically about 0.2.

The maximum input capacitor voltage is given as:

$$V_{IN}^{MAX} = \sqrt{2} \cdot V_{LINE}^{MAX} \quad (3)$$

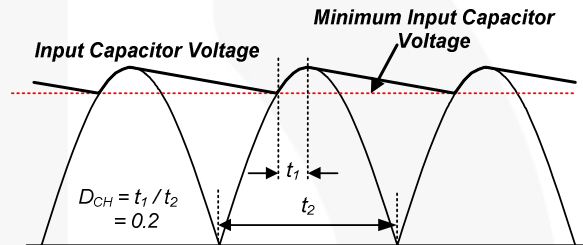


Figure 2. Input Capacitor Voltage Waveform

(Design Example) By choosing $100\mu F$ capacitor for input capacitor, the minimum input voltages for nominal load is obtained as:

$$\begin{aligned} V_{IN}^{MIN} &= \sqrt{2 \cdot (V_{LINE}^{MIN})^2 - \frac{P_{IN} \cdot (1 - D_{CH})}{C_{IN} \cdot f_L}} \\ &= \sqrt{2 \cdot (90)^2 - \frac{26 \cdot (1 - 0.2)}{100 \times 10^{-6} \cdot 60}} = 113V \end{aligned}$$

The maximum input voltage is obtained as:

$$V_{IN}^{MAX} = \sqrt{2} \cdot V_{LINE}^{MAX} = \sqrt{2} \cdot 264 = 373V$$

[STEP-3] Determine the Reflected Output Voltage (V_{RO})

When the MOSFET is turned off, the input voltage (V_{IN}), together with the output voltage reflected to the primary (V_{RO}), are imposed across the MOSFET, as shown in 0. With a given V_{RO} , the maximum duty cycle (D_{MAX}), and the maximum nominal MOSFET voltage (V_{DS}^{NOM}) are obtained as:

$$D_{MAX} = \frac{V_{RO}}{V_{RO} + V_{IN}^{MIN}} \quad (4)$$

$$V_{DS}^{NOM} = V_{IN}^{MAX} + V_{RO} \quad (5)$$

$$V_{DO}^{NOM} = \frac{V_{IN}^{MAX} \cdot (V_O + V_F)}{V_{RO}} + V_O \quad (6)$$

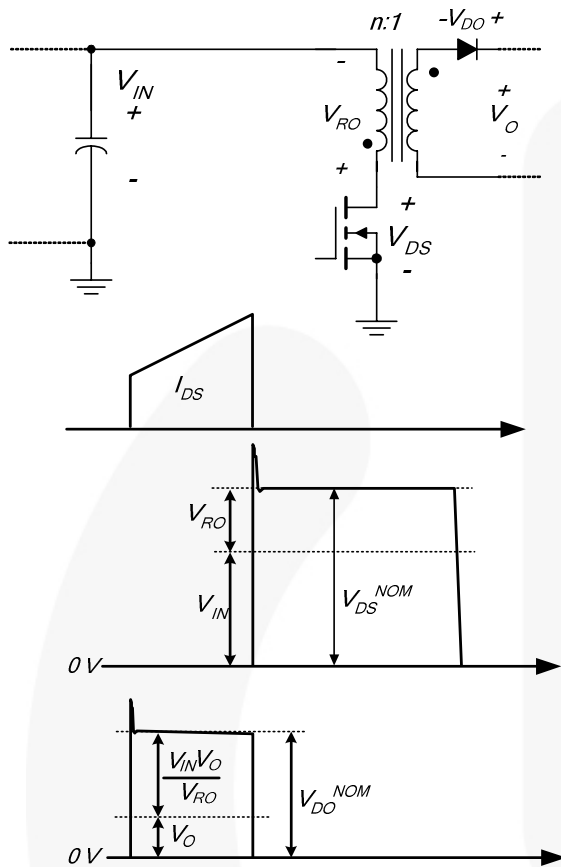


Figure 3. Output Voltage Reflected to the Primary

As can be seen in Equation (5), the voltage stress across MOSFET can be reduced by reducing V_{RO} . This, however, increases the voltage stresses on the rectifier diodes in the secondary side, as shown in Equation (6). Therefore, V_{RO} should be determined by a trade-off between the voltage stresses of MOSFET and diode. Especially for low output voltage application, the rectifier diode forward-voltage drop is a dominant factor determining the power supply efficiency. Therefore, the reflected output voltage should be determined such that rectifier diode forward voltage can be minimized. Table 1 shows the forward-voltage drops for Schottky diodes with different voltage ratings.

Because the actual drain voltage and diode voltage rise above the nominal voltage due to the leakage inductance of the transformer, as shown in 0, it is typical to set V_{RO} such that V_{DS}^{NOM} and V_{DO}^{NOM} are 60~70% of voltage ratings of MOSFET and diode, respectively.

Table 1. Diode Forward-Voltage Drop for Different Voltage Ratings (3A Schottky Diode)

Part Name	V_{RRM}	V_F
SB320	20V	0.5V
SB330	30V	
SB340	40V	
SB350	50V	0.74V
SB360	60V	
SB380	80V	0.85V
SB3100	100V	

(Design Example) As can be seen in Table 1, it is necessary to use a rectifier diode with 40V voltage rating to maximize efficiency. Assuming that the nominal voltages of MOSFET and diode are less than 68% of their voltage rating, the reflected output voltage is given as:

$$V_{DO}^{NOM} = \frac{V_{IN}^{MAX} \cdot (V_O + V_F)}{V_{RO}} + V_O$$

$$= \frac{373 \cdot (5 + 0.5)}{V_{RO}} + 5 < 0.68 \cdot 40 = 27.2$$

$$\Rightarrow V_{RO} > \frac{373 \cdot (5 + 0.5)}{22.2} = 92.4V$$

$$V_{DS}^{NOM} = V_{IN}^{MAX} + V_{RO} < 0.68 \cdot 700 = 476$$

$$\Rightarrow V_{RO} < 476 - 373 < 103V$$

By determining V_{RO} as 100V,

$$D_{MAX} = \frac{V_{RO}}{V_{RO} + V_{IN}^{MIN}} = \frac{100}{100 + 113} = 0.47$$

$$V_{DS}^{NOM} = V_{IN}^{MAX} + V_{RO} = 373 + 100 = 473V$$

$$V_{DO}^{NOM} = \frac{V_{IN}^{MAX} \cdot (V_O + V_F)}{V_{RO}} + V_O$$

$$= \frac{373 \cdot (5 + 0.5)}{100} + 5 = 25.5V$$

[STEP-4] Determine the Transformer Primary-Side Inductance (L_M)

The transformer primary-side inductance is determined for the minimum input voltage and nominal load condition. With the D_{MAX} from step 3, the primary-side inductance (L_M) of the transformer is obtained as:

$$L_M = \frac{(V_{IN}^{MIN} \cdot D_{MAX})^2}{2P_{IN} f_{SW} K_{RF}} \quad (7)$$

where f_{SW} is the switching frequency and K_{RF} is the ripple factor at minimum input voltage and nominal load condition, defined as shown in Figure 4. The ripple factor is closely related with the transformer size and the RMS value of the MOSFET current. Even though the conduction loss in the MOSFET can be reduced by reducing the ripple factor, too small a ripple factor forces an increase in

transformer size. From a practical point of view, it is reasonable to set $K_{RF} = 0.3 \sim 0.6$ for the universal input range and $K_{RF} = 0.4 \sim 0.8$ for the European input range.

Once L_M is calculated by determining K_{RF} from Equation (7), the peak current and RMS current of the MOSFET for minimum input voltage and nominal load condition are obtained as:

$$I_{DS}^{PK} = I_{EDC} + \frac{\Delta I}{2} \quad (8)$$

$$I_{DS}^{RMS} = \sqrt{\left[3(I_{EDC})^2 + \left(\frac{\Delta I}{2}\right)^2 \right] \frac{D_{MAX}}{3}} \quad (9)$$

where
$$I_{EDC} = \frac{P_{IN}}{V_{IN}^{MIN} \cdot D_{MAX}} \quad (10)$$

and
$$\Delta I = \frac{V_{IN}^{MIN} D_{MAX}}{L_M f_{SW}} \quad (11)$$

$$K_{RF} = \frac{\Delta I}{2I_{EDC}}$$

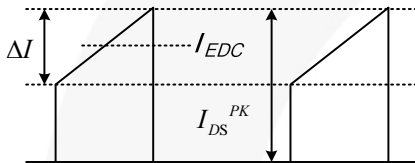


Figure 4. MOSFET Current and Ripple Factor (K_{RF})

(Design Example) Determining the ripple factor as 0.6:

$$L_M = \frac{(V_{IN}^{MIN} \cdot D_{MAX})^2}{2P_{IN} f_{SW} K_{RF}} = \frac{(113 \cdot 0.47)^2}{2 \cdot 26 \cdot 100 \times 10^3 \cdot 0.6} = 900 \mu H$$

$$I_{EDC} = \frac{P_{IN}}{V_{IN}^{MIN} \cdot D_{MAX}} = \frac{26}{113 \cdot 0.47} = 0.49 A$$

$$\Delta I = \frac{V_{IN}^{MIN} D_{MAX}}{L_M f_{SW}} = \frac{113 \cdot 0.47}{900 \times 10^{-6} \cdot 100 \times 10^3} = 0.59 A$$

$$I_{DS}^{PK} = I_{EDC} + \frac{\Delta I}{2} = 0.49 + 0.295 = 0.78 A$$

$$I_{DS}^{RMS} = \sqrt{\left[3(I_{EDC})^2 + \left(\frac{\Delta I}{2}\right)^2 \right] \frac{D_{MAX}}{3}} = \sqrt{\left[3(0.49)^2 + (0.295)^2 \right] \frac{0.47}{3}} = 0.36 A$$

[STEP-5] Choose the Proper FPS, Considering Input Power and Peak Drain Current

With the resulting maximum peak drain current of the MOSFET (I_{DS}^{PK}) from Equation (8), choose the proper FPS for which the pulse-by-pulse current limit level (I_{LIM}) is higher than I_{DS}^{PK} . Since FPS has $\pm 10\%$ tolerance of I_{LIM} , there should be some margin when choosing the proper FPS device. The FSBH-series lineup with power ratings is summarized in Table 2.

Table 2. Lineup of FSBH-Series with Power Ratings

Product	I_{LIM}	Maximum Output Power for Universal Input Range and Open Frame
FSBH0F70	0.73A	8W
FSBH0170	0.80A	13W
FSBH0270	1.00A	16W
FSBH0370	1.20A	19W

(Design Example) FSBH0370 is selected.

[STEP-6] Determine the Minimum Primary Turns

With a given core, the minimum number of turns for the transformer primary side to avoid core saturation is given by:

$$N_p^{\min} = \frac{L_M I_{LIM}}{B_{SAT} A_e} \times 10^6 \quad (12)$$

where A_e is the cross-sectional area of the core in mm^2 , I_{LIM} is the pulse-by-pulse current limit level, and B_{SAT} is the saturation flux density in Tesla.

The pulse-by-pulse current limit level is included in Equation (12) because the inductor current reaches the pulse-by-pulse current limit level during the load transient or overload condition. **Error! Reference source not found.** shows the typical characteristics of ferrite core from TDK (PC40). Since the saturation flux density (B_{SAT}) decreases as the temperature increases, the high temperature characteristics should be considered. If there is no reference data, use $B_{MAX} = 0.3 T$.

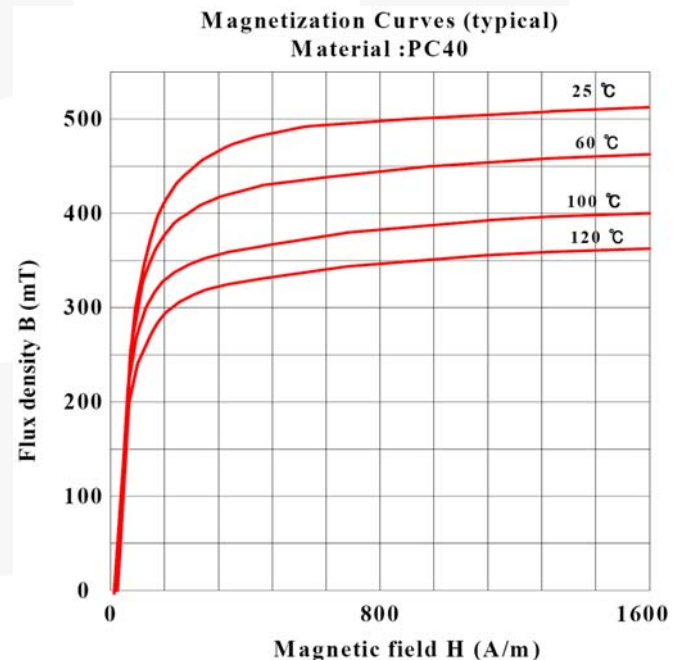


Figure 5. Typical B-H Characteristics of Ferrite Core (TDK/PC40)

(Design Example) EEL-19 core is selected, whose effective cross-sectional area is 25mm^2 . Choosing the saturation flux density as 0.3 T, the minimum number of turns for the primary side is obtained as:

$$N_P^{\min} = \frac{L_M \cdot I_{LIM}}{B_{SAT} A_e} \times 10^6$$

$$= \frac{900 \times 10^{-6} \cdot 1.2}{0.3 \cdot 25} \times 10^6 = 144$$

[STEP-7] Determine the Number of Turns for Each Winding

Figure 6 shows the simplified diagram of the transformer. First, calculate the turn ratio (n) between the primary side and the secondary side from the reflected output voltage, determined in step 3, as:

$$n = \frac{N_P}{N_S} = \frac{V_{RO}}{V_O + V_F} \quad (13)$$

where N_P and N_S are the number of turns for primary side and secondary side, respectively; V_O is the output voltage; and V_F is the diode (D_O) forward-voltage drop. Then, determine the proper integer for N_S , such that the resulting N_P is larger than N_P^{\min} obtained from Equation (12).

The number of turns for the auxiliary winding for V_{DD} supply is determined as:

$$N_A = \frac{V_{DD}^* + V_{FA}}{V_O + V_F} \cdot N_{S1} \quad (14)$$

where V_{DD}^* is the nominal value of the supply voltage and V_{FA} is the forward-voltage drop of D_{DD} as defined in Figure 6. Since V_{DD} increases as the output load increases, it is proper to set V_{DD} at 3~5V higher than V_{DD} UVLO level (8V) to avoid the over-voltage protection condition during the peak load operation.

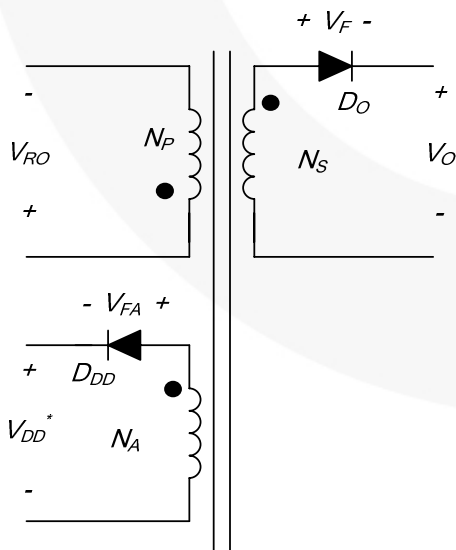


Figure 6. Simplified Transformer Diagram

(Design Example) Assuming the diode forward-voltage drop is 0.5V, the turn ratio is obtained as:

$$n = \frac{N_P}{N_S} = \frac{V_{RO}}{V_O + V_F} = \frac{100}{5 + 0.5} = 18.18$$

Then, determine the proper integer for N_S , such that the resulting N_P is larger than N_P^{\min} as:

$$N_S = 8, N_P = n \cdot N_S = 146 > N_P^{\min}$$

Setting V_{DD}^* as 15V, the number of turns for the auxiliary winding is obtained as:

$$N_A = \frac{V_{DD}^* + V_{FA}}{V_O + V_F} \cdot N_S = \frac{15 + 1.2}{5 + 0.5} \cdot 8 = 24$$

[STEP-8] Determine the Wire Diameter for Each Winding Based on the RMS Current of Winding

The maximum RMS current of the secondary winding is obtained as:

$$I_{SEC}^{RMS} = n \cdot I_{DS}^{RMS} \sqrt{\frac{1 - D_{MAX}}{D_{MAX}}} \quad (15)$$

The current density is typically 3~5A/mm² when the wire is long (>1m). When the wire is short with a small number of turns, a current density of 5~10A/mm² is also acceptable. Avoid using wire with a diameter larger than 1mm to avoid severe eddy current losses as well as to make winding easier. For high-current output, it is better to use parallel windings with multiple strands of thinner wire to minimize skin effect.

(Design Example) The RMS current of primary-side winding is obtained from step 4 as 0.36A. The RMS current of secondary-side winding is calculated as:

$$I_{SEC}^{RMS} = n \cdot I_{DS}^{RMS} \sqrt{\frac{1 - D_{MAX}}{D_{MAX}}}$$

$$= 18.18 \cdot 0.36 \sqrt{\frac{1 - 0.47}{0.47}} = 6.9A$$

0.3mm (5A/mm²) and 0.65mm×2 (10A/mm²) diameter wires are selected for primary and secondary windings, respectively.

[STEP-9] Choose the Rectifier Diode in the Secondary Side Based on the Voltage and Current Ratings

The maximum reverse voltage and the RMS current of the rectifier diode are obtained as:

$$V_{DO} = V_O + \frac{V_{IN}^{MAX}}{n} \quad (16)$$

$$I_{DO}^{RMS} = n \cdot I_{DS}^{RMS} \sqrt{\frac{1 - D_{MAX}}{D_{MAX}}} \quad (17)$$

The typical voltage and current margins for the rectifier diode are:

$$V_{RRM} > 1.3 \cdot V_{DO} \quad (18)$$

$$I_F > 1.5 \cdot I_{DO}^{RMS} \quad (19)$$

where V_{RRM} is the maximum reverse voltage and I_F is the current rating of the diode.

(Design Example) The diode voltage and current are calculated as:

$$V_{DO} = V_O + \frac{V_{IN}^{MAX}}{n} = 5 + \frac{373}{18.18} = 25.5V$$

$$I_{DO}^{RMS} = n \cdot I_{DS}^{RMS} \sqrt{\frac{1-D_{MAX}}{D_{MAX}}} \\ = 18.18 \cdot 0.36 \sqrt{\frac{1-0.47}{0.47}} = 6.9A$$

Two 5A and 40V diodes in parallel are selected for the rectifier diode.

[STEP-10] Feedback Circuit Configuration

Since FSBH-series employs current-mode control, the feedback loop can be implemented with a one-pole and one-zero compensation circuit.

The current control factor of FPS, K is defined as:

$$K = \frac{I_{LIM}}{V_{FB}^{SAT}} = \frac{I_{LIM}}{3.2} \quad (20)$$

where I_{LIM} is the pulse-by-pulse current limit and V_{FB}^{SAT} is the feedback saturation voltage, which is typically 3.2V.

As described in step 4, it is typical to design the flyback converter to operate in CCM for heavy load condition. For CCM operation, the control-to-output transfer function of a flyback converter using current mode control is given by:

$$G_{vc} = \frac{\hat{v}_o}{\hat{v}_{FB}} \\ = \frac{K \cdot R_L \cdot V_{IN} (N_p / N_s) \cdot (1 + s / \omega_z)(1 - s / \omega_{RZ})}{2V_{RO} + V_{IN} (1 + s / \omega_p)} \quad (21)$$

where R_L is the load resistance and the pole and zeros of Equation (21) are obtained as:

$$\omega_z = \frac{1}{R_c C_o}, \quad \omega_{RZ} = \frac{R_L (1-D)^2}{DL_M (N_s / N_p)^2} \quad \text{and} \quad \omega_p = \frac{(1+D)}{R_L C_o}$$

Where D is the duty cycle of the FPS and R_c is the ESR of C_o . Notice that there is a right half plane (RHP) zero (ω_{RZ}) in the control-to-output transfer function of Equation (21). Because the RHP zero reduces the phase by 90 degrees, the crossover frequency should be placed below the RHP zero.

Figure 7 shows the variation of a CCM flyback converter control-to-output transfer function for different input voltages. This figure shows the system poles and zeros together with the DC gain change for different input voltages. The gain is highest at the high input voltage condition and the RHP zero is lowest at the low input voltage condition.

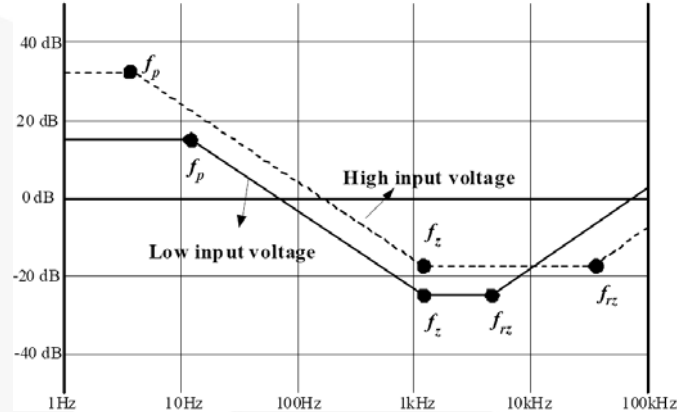


Figure 7. CC M Flyback Converter Control-to Output Transfer Function Variation for Different Input Voltages

Figure 8 shows the variation of a CCM flyback converter control-to-output transfer function for different loads. This figure shows that the low frequency gain does not change for different loads and the RHP zero is lowest at the full load condition.

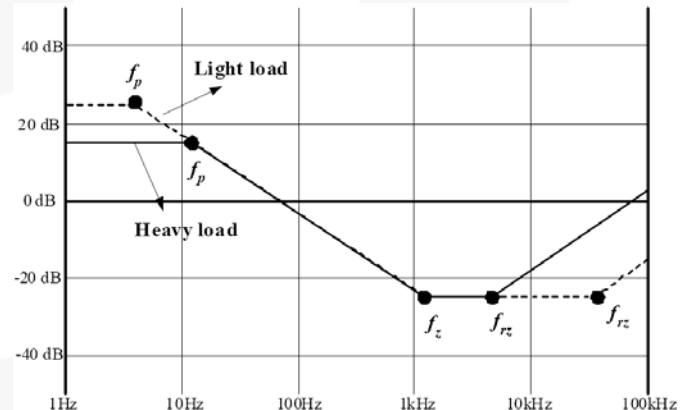


Figure 8. CCM Flyback Converter Control-to Output Transfer Function Variation for Different Loads

When the input voltage and the load current vary over a wide range, it is not easy to determine the worst case for the feedback loop design. The gain, together with zeros and poles, vary according to the operating conditions. Moreover, even though the converter is designed to operate in CCM or at the boundary of DCM and CCM in the minimum input voltage and full load condition, the converter enters into DCM,

changing the system transfer functions as the load current decreases and/or input voltage increases.

One simple and practical way to address this problem is designing the feedback loop for low input voltage and full load condition with enough phase and gain margin. When the converter operates in CCM, the RHP zero is lowest in low input voltage and full load condition. The gain increases only about 6dB as the operating condition is changed from the lowest input voltage to the highest input voltage condition under universal input condition. When the operating mode changes from CCM to DCM, the RHP zero disappears, making the system stable. Therefore, by designing the feedback loop with more than 45 degrees phase margin in low input voltage and full load condition, the stability over all the operating ranges can be guaranteed.

Figure 9 is a typical feedback circuit mainly consisting of a shunt regulator and a photo-coupler. R_1 and R_2 form a voltage divider for output voltage regulation. R_F and C_F are adjusted for control-loop compensation. The maximum source current of the FB pin is about 1mA. The phototransistor must be capable of sinking this current to pull the FB level down at no load. The value of R_D , is determined as:

$$\frac{V_O - V_{OPD} - V_{KA}}{R_D} \cdot CTR > I_{FB} \tag{22}$$

where V_{OPD} is the drop voltage of the photodiode, about 1.2V; V_{KA} is the minimum cathode to anode voltage of KA431 (2.5V); and CTR is the current transfer rate of the opto-coupler.

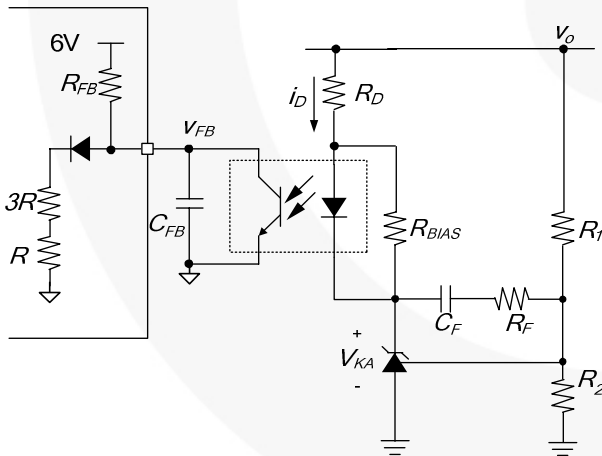


Figure 9. Feedback Circuit

The feedback compensation network transfer function of Figure 9 is obtained as:

$$\frac{\hat{v}_{FB}}{\hat{v}_o} = -\frac{\omega_l}{s} \cdot \frac{1 + s/\omega_{ZC}}{1 + s/\omega_{PC}} \tag{23}$$

where $\omega_l = \frac{R_{FB}}{R_1 R_D C_F}$, $\omega_{ZC} = \frac{1}{(R_F + R_1) C_F}$, and

$$\omega_{PC} = \frac{1}{R_{FB} C_{FB}}$$

and R_{FB} is the equivalent feedback bias resistor of FSBH-series (5kΩ); and R_1 , R_D , R_F , C_F and C_{FB} are shown in Figure 10.

(Design Example) Assuming CTR is 100%,

$$\frac{V_O - V_{OPD} - V_{KA}}{R_D} \cdot CTR > 1 \times 10^{-3}$$

$$R_D < \frac{V_O - V_{OPD} - V_{KA}}{1 \times 10^{-3}} = \frac{5 - 1.2 - 2.5}{1 \times 10^{-3}} = 1.3k\Omega$$

The minimum cathode current for KA431 is 1mA.

$$R_{BIAS} < \frac{V_{OPD}}{1 \times 10^{-3}} = 1.2k\Omega$$

1kΩ resistor is selected for R_{BIAS} .

The voltage divider resistors R_1 and R_2 for V_O sensing are selected as 20kΩ and 20kΩ.

[STEP-11] Design Input Voltage Sensing Circuit

Figure 10 shows a resistive voltage divider with low-pass filter for line-voltage detection of the VIN pin. The V_{IN} voltage is used for brownout protection, which triggers when the V_{IN} voltage drops below 0.6V. A 500ms debounce time is introduced for brownout protection to prevent false triggering by the voltage ripple on the input capacitor. FSBH-series devices start up when the V_{IN} voltage reaches 1.1V. It is typical to use 100:1 voltage divider for V_{IN} level.

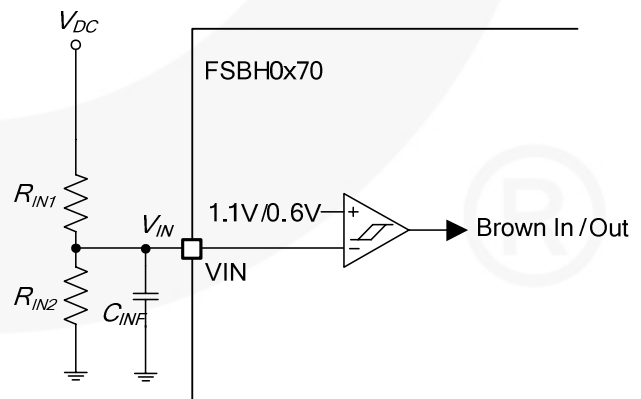


Figure 10. Input Voltage Sensing

Design Summary

Figure 11 shows the final schematic of the 20W power supply of the design example.

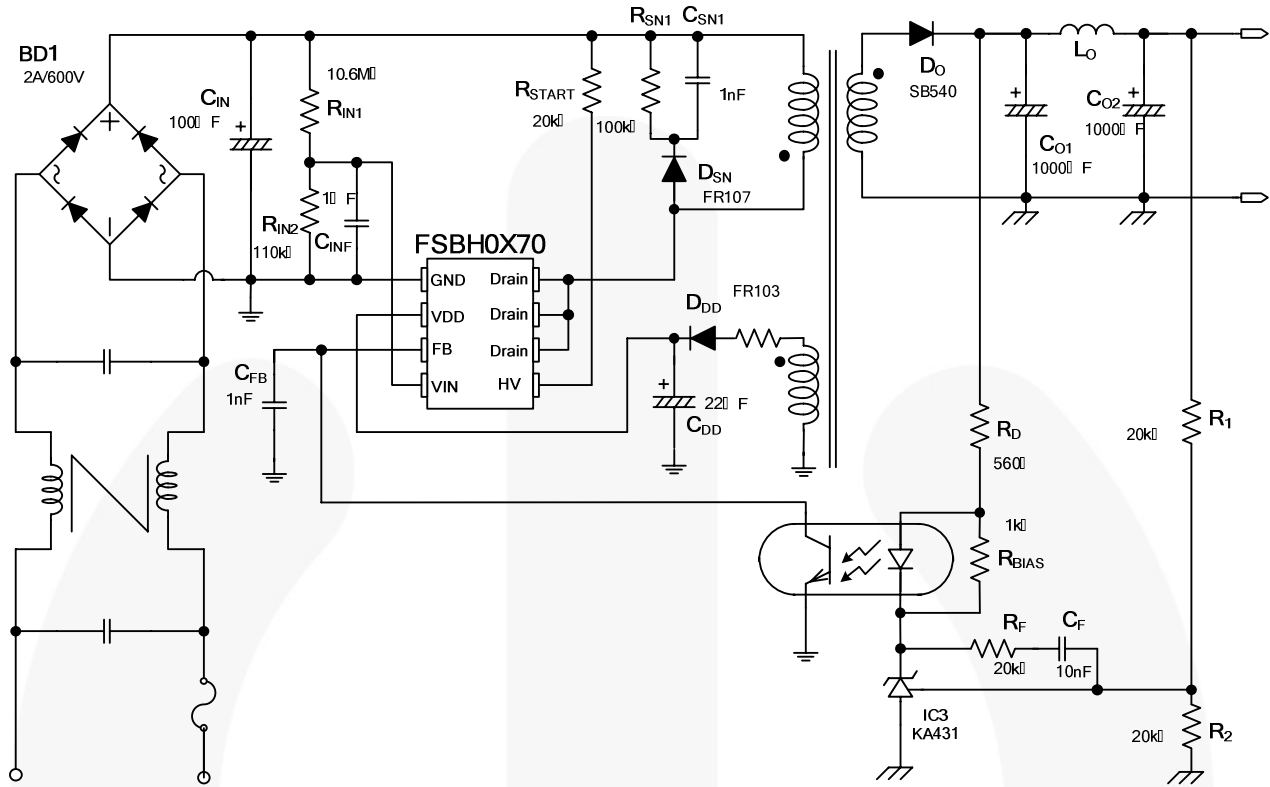


Figure 11. Final Schematic of Design Example

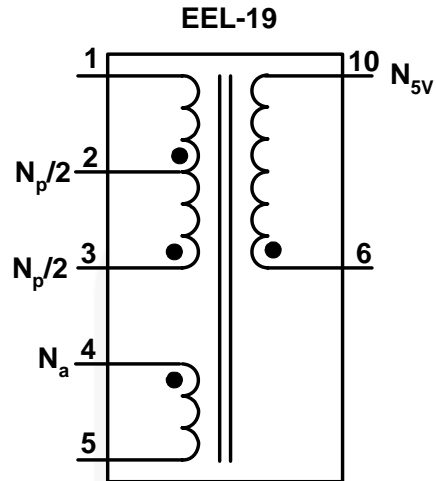


Figure 12. Transformer Specification

Core: EEL-19 ($A_e=25\text{mm}^2$)
 Bobbin: EEL-19

	Pin (S → F)	Wire	Turns	Winding Method
N_a	4 → 5	$0.3\phi \times 1$	24	Solenoid Winding
Insulation: Polyester Tape $t = 0.025\text{mm}$, 1 Layer				
$N_{p/2}$	3 → 2	$0.3\phi \times 1$	73	Solenoid Winding
Insulation: Polyester Tape $t = 0.025\text{mm}$, 2 Layers				
N_{5v}	6 → 10	$0.65\phi \times 3$	8	Solenoid Winding
Insulation: Polyester Tape $t = 0.025\text{mm}$, 2 Layers				
$N_{p/2}$	2 → 1	$0.3\phi \times 1$	73	Solenoid Winding
Insulation: Polyester Tape $t = 0.025\text{mm}$, 2 Layers				

	Pin	Specifications	Remark
Inductance	1–3	$900\mu\text{H} \pm 10\%$	100 kHz, 1 V
Leakage	1–3	$< 30 \mu\text{H Max.}$	Short All Other Pins

Related Datasheets

[FSBH0F70A, FSBH0170/A, FSBH0270/A, FSBH0370 — Green Mode Fairchild Power Switch \(FPS™\)](#)

DISCLAIMER

FAIRCHILD SEMICONDUCTOR RESERVES THE RIGHT TO MAKE CHANGES WITHOUT FURTHER NOTICE TO ANY PRODUCTS HEREIN TO IMPROVE RELIABILITY, FUNCTION, OR DESIGN. FAIRCHILD DOES NOT ASSUME ANY LIABILITY ARISING OUT OF THE APPLICATION OR USE OF ANY PRODUCT OR CIRCUIT DESCRIBED HEREIN; NEITHER DOES IT CONVEY ANY LICENSE UNDER ITS PATENT RIGHTS, NOR THE RIGHTS OF OTHERS.

LIFE SUPPORT POLICY

FAIRCHILD'S PRODUCTS ARE NOT AUTHORIZED FOR USE AS CRITICAL COMPONENTS IN LIFE SUPPORT DEVICES OR SYSTEMS WITHOUT THE EXPRESS WRITTEN APPROVAL OF THE PRESIDENT OF FAIRCHILD SEMICONDUCTOR CORPORATION.

As used herein:

1. Life support devices or systems are devices or systems which, (a) are intended for surgical implant into the body, or (b) support or sustain life, or (c) whose failure to perform when properly used in accordance with instructions for use provided in the labeling, can be reasonably expected to result in significant injury to the user.
2. A critical component is any component of a life support device or system whose failure to perform can be reasonably expected to cause the failure of the life support device or system, or to affect its safety or effectiveness.

ON Semiconductor and  are trademarks of Semiconductor Components Industries, LLC dba ON Semiconductor or its subsidiaries in the United States and/or other countries. ON Semiconductor owns the rights to a number of patents, trademarks, copyrights, trade secrets, and other intellectual property. A listing of ON Semiconductor's product/patent coverage may be accessed at www.onsemi.com/site/pdf/Patent-Marking.pdf. ON Semiconductor reserves the right to make changes without further notice to any products herein. ON Semiconductor makes no warranty, representation or guarantee regarding the suitability of its products for any particular purpose, nor does ON Semiconductor assume any liability arising out of the application or use of any product or circuit, and specifically disclaims any and all liability, including without limitation special, consequential or incidental damages. Buyer is responsible for its products and applications using ON Semiconductor products, including compliance with all laws, regulations and safety requirements or standards, regardless of any support or applications information provided by ON Semiconductor. "Typical" parameters which may be provided in ON Semiconductor data sheets and/or specifications can and do vary in different applications and actual performance may vary over time. All operating parameters, including "Typicals" must be validated for each customer application by customer's technical experts. ON Semiconductor does not convey any license under its patent rights nor the rights of others. ON Semiconductor products are not designed, intended, or authorized for use as a critical component in life support systems or any FDA Class 3 medical devices or medical devices with a same or similar classification in a foreign jurisdiction or any devices intended for implantation in the human body. Should Buyer purchase or use ON Semiconductor products for any such unintended or unauthorized application, Buyer shall indemnify and hold ON Semiconductor and its officers, employees, subsidiaries, affiliates, and distributors harmless against all claims, costs, damages, and expenses, and reasonable attorney fees arising out of, directly or indirectly, any claim of personal injury or death associated with such unintended or unauthorized use, even if such claim alleges that ON Semiconductor was negligent regarding the design or manufacture of the part. ON Semiconductor is an Equal Opportunity/Affirmative Action Employer. This literature is subject to all applicable copyright laws and is not for resale in any manner.

PUBLICATION ORDERING INFORMATION

LITERATURE FULFILLMENT:

Literature Distribution Center for ON Semiconductor
19521 E. 32nd Pkwy, Aurora, Colorado 80011 USA
Phone: 303-675-2175 or 800-344-3860 Toll Free USA/Canada
Fax: 303-675-2176 or 800-344-3867 Toll Free USA/Canada
Email: orderlit@onsemi.com

N. American Technical Support: 800-282-9855 Toll Free
USA/Canada
Europe, Middle East and Africa Technical Support:
Phone: 421 33 790 2910
Japan Customer Focus Center
Phone: 81-3-5817-1050

ON Semiconductor Website: www.onsemi.com
Order Literature: <http://www.onsemi.com/orderlit>
For additional information, please contact your local
Sales Representative