

ON Semiconductor

Is Now

onsemi™

To learn more about onsemi™, please visit our website at
www.onsemi.com

onsemi and **onsemi** and other names, marks, and brands are registered and/or common law trademarks of Semiconductor Components Industries, LLC dba "**onsemi**" or its affiliates and/or subsidiaries in the United States and/or other countries. **onsemi** owns the rights to a number of patents, trademarks, copyrights, trade secrets, and other intellectual property. A listing of **onsemi** product/patent coverage may be accessed at www.onsemi.com/site/pdf/Patent-Marking.pdf. **onsemi** reserves the right to make changes at any time to any products or information herein, without notice. The information herein is provided "as-is" and **onsemi** makes no warranty, representation or guarantee regarding the accuracy of the information, product features, availability, functionality, or suitability of its products for any particular purpose, nor does **onsemi** assume any liability arising out of the application or use of any product or circuit, and specifically disclaims any and all liability, including without limitation special, consequential or incidental damages. Buyer is responsible for its products and applications using **onsemi** products, including compliance with all laws, regulations and safety requirements or standards, regardless of any support or applications information provided by **onsemi**. "Typical" parameters which may be provided in **onsemi** data sheets and/or specifications can and do vary in different applications and actual performance may vary over time. All operating parameters, including "Typicals" must be validated for each customer application by customer's technical experts. **onsemi** does not convey any license under any of its intellectual property rights nor the rights of others. **onsemi** products are not designed, intended, or authorized for use as a critical component in life support systems or any FDA Class 3 medical devices or medical devices with a same or similar classification in a foreign jurisdiction or any devices intended for implantation in the human body. Should Buyer purchase or use **onsemi** products for any such unintended or unauthorized application, Buyer shall indemnify and hold **onsemi** and its officers, employees, subsidiaries, affiliates, and distributors harmless against all claims, costs, damages, and expenses, and reasonable attorney fees arising out of, directly or indirectly, any claim of personal injury or death associated with such unintended or unauthorized use, even if such claim alleges that **onsemi** was negligent regarding the design or manufacture of the part. **onsemi** is an Equal Opportunity/Affirmative Action Employer. This literature is subject to all applicable copyright laws and is not for resale in any manner. Other names and brands may be claimed as the property of others.



Is Now Part of



ON Semiconductor®

To learn more about ON Semiconductor, please visit our website at
www.onsemi.com

ON Semiconductor and the ON Semiconductor logo are trademarks of Semiconductor Components Industries, LLC dba ON Semiconductor or its subsidiaries in the United States and/or other countries. ON Semiconductor owns the rights to a number of patents, trademarks, copyrights, trade secrets, and other intellectual property. A listing of ON Semiconductor's product/patent coverage may be accessed at www.onsemi.com/site/pdf/Patent-Marking.pdf. ON Semiconductor reserves the right to make changes without further notice to any products herein. ON Semiconductor makes no warranty, representation or guarantee regarding the suitability of its products for any particular purpose, nor does ON Semiconductor assume any liability arising out of the application or use of any product or circuit, and specifically disclaims any and all liability, including without limitation special, consequential or incidental damages. Buyer is responsible for its products and applications using ON Semiconductor products, including compliance with all laws, regulations and safety requirements or standards, regardless of any support or applications information provided by ON Semiconductor. "Typical" parameters which may be provided in ON Semiconductor data sheets and/or specifications can and do vary in different applications and actual performance may vary over time. All operating parameters, including "Typicals" must be validated for each customer application by customer's technical experts. ON Semiconductor does not convey any license under its patent rights nor the rights of others. ON Semiconductor products are not designed, intended, or authorized for use as a critical component in life support systems or any FDA Class 3 medical devices or medical devices with a same or similar classification in a foreign jurisdiction or any devices intended for implantation in the human body. Should Buyer purchase or use ON Semiconductor products for any such unintended or unauthorized application, Buyer shall indemnify and hold ON Semiconductor and its officers, employees, subsidiaries, affiliates, and distributors harmless against all claims, costs, damages, and expenses, and reasonable attorney fees arising out of, directly or indirectly, any claim of personal injury or death associated with such unintended or unauthorized use, even if such claim alleges that ON Semiconductor was negligent regarding the design or manufacture of the part. ON Semiconductor is an Equal Opportunity/Affirmative Action Employer. This literature is subject to all applicable copyright laws and is not for resale in any manner.

AN-6002

Component calculations and simulation tools for FAN5234 or FAN5236

Background / Overview

To simplify designs using the FAN5234 and FAN5236 PWM modulators, Fairchild has developed:

- A spreadsheet to calculate recommended component values
- **NEW** Capability added 6/19/04: Phase Gain Bode Plot inside the spreadsheet.
and
- A continuous time behavioral model of the modulator that runs in PSPICE A/D. Provides transient analysis and Bode plot outputs.
The model is small enough to run under Cadence's Orcad Lite Edition (includes Orcad Capture and PSPICE A/D), which can be ordered on CD at <http://www.ema-eda.com>
or downloaded from:
<http://www.orcad.com>
These links have been verified as of this publication date but may change over time.

This package of design aids (including this document) is contained in AN-6002.ZIP which can be requested on: <http://www.fairchildsemi.com/>.

To install, copy AN-6002.ZIP to an empty folder (e.g. FAN5236Design). Then unzip AN-6002.ZIP into that folder.
Bode Plots A new feature has been added to the Spreadsheet tool

Recommended design procedure:

1. Use the spreadsheet (FAN5236 Design calculation aid.xls) to calculate the output filter using the “Output Filter” tab.
2. Use the “Main Sheet” tab of the spreadsheet to calculate the other component values once you have selected the output L and C. Most applications will not require C2. Try your first simulation with this value set to 1pF.
3. View results on the Bode plot inside the spreadsheet.
4. Use the “input Filter” tab to determine the ripple current rating required for the input filter capacitor.
5. Input the values you have selected into the PSPICE model (see Figure 2). Generate a Bode plot by simulating with the “application circuit-ac sweep” simulation profile. Make sure to simulate over the corners of VIN and IOUT for your application.
6. Once you are satisfied with the small signal stability, you can view the transient response by simulating using the “application circuit-transient response” simulation profile.

Design Calculation Spreadsheet: FAN5236 Design calculation aid.xls

This spreadsheet calculates external components and provides a bode plot for stability analysis. Instructions can be found in the "Instructions" tab of the spreadsheet..

Macro Security Note:

FAN5236 Design calculation aid.xls uses macros extensively. For the spreadsheet to operate properly, check the “Always trust macros from this source” box if a security warning appears, then click the “Enable Macros” button..

This is only required the first time you run a Fairchild spreadsheet tool with macros.

PSPICE Simulation Model

The simulation model is a sampled data continuous time model, which is adapted from Ray Ridley and Dennis Feucht's modeling work for current mode controllers^{1,2,3}. It is set up to provide a bode plot where the red trace is Phase Margin (in degrees) and the green trace is gain (in dB). For stable response, we recommend at least 45° of phase margin when the gain crosses 0dB. The model also provides transient response using a pulsed current source (I1) as the load. The IC's error-amp behavioral model is based on Ray Kendall's Macromodelling article in EDN.⁴

To run the model start Capture (9.1 or higher), open **FAN5236.opj** (this is the "project" file for Capture CIS). Double click on Page 1 Under .\fan5236.dsn\Application Circuit.

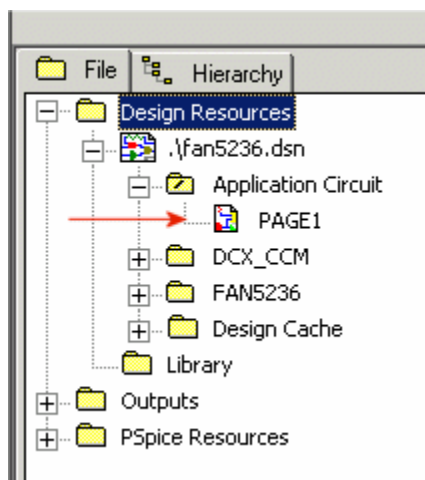


Figure 1. FAN5236.OPJ project

The parameters for this model are entered in the "Parameters" block on the lower right-hand corner of the schematic. Double click on any parameter in that block to set the values in the schematic. Once the schematic is set up, F11 (function key) will display the Bode plot.

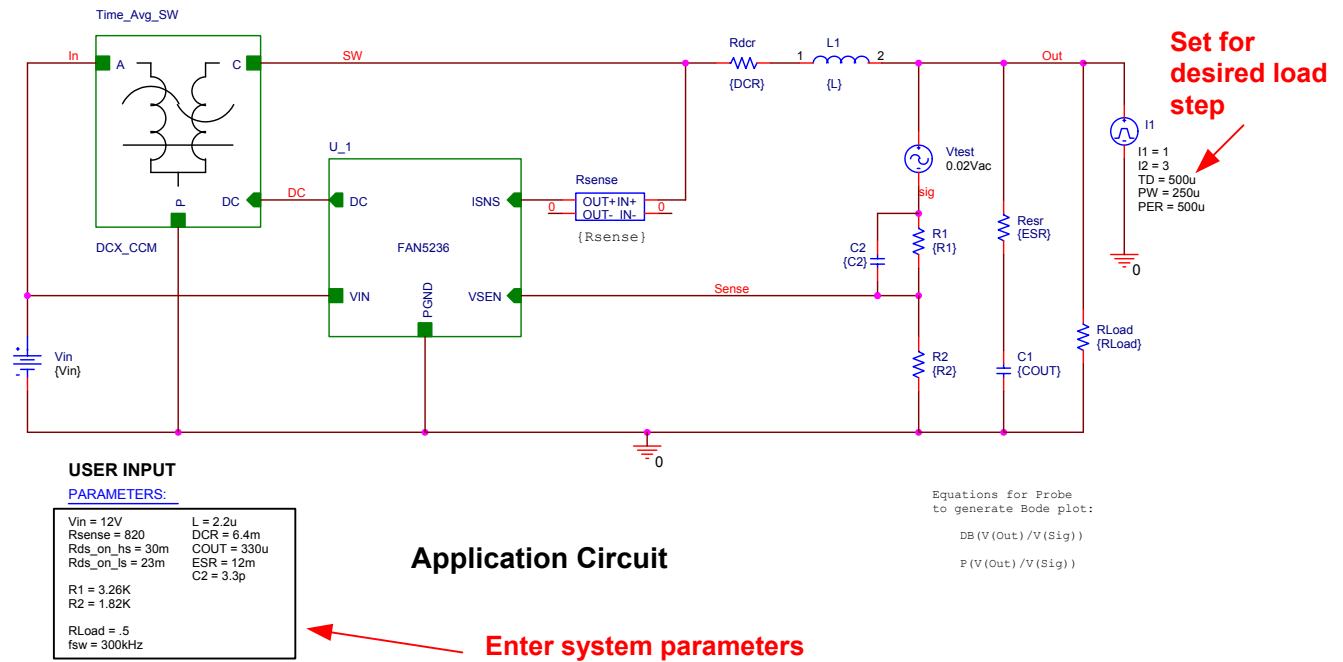


Figure 2. PSPICE schematic

This model will also allow for transient response simulation. To choose between Bode plot (AC small signal) and Transient response, go to the project window and right click the appropriate model. If you are simulating for transient response, be sure to set up RLOAD. You will know if you forgot this step, as the inductor current [I(L1)] trace will be much higher (probably beyond the Y axis limit) than the pulse load current [I(I1)].

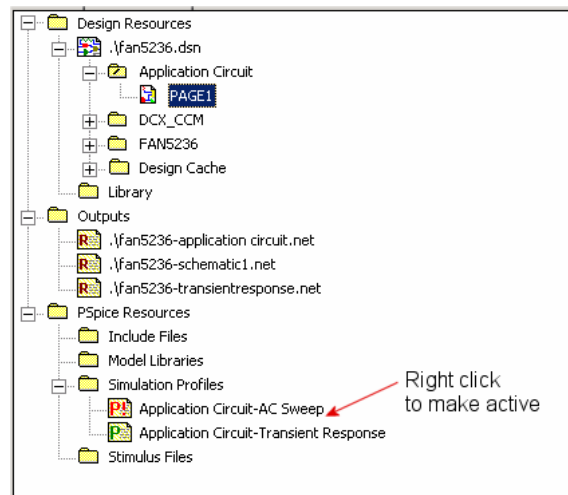


Figure 3. Selecting between Bode plot and Transient simulations.

Troubleshooting the plot window

Some older versions of PSPICE may not automatically load the probe settings (which are contained in the *.prb files). These settings define the XY axis settings, trace colors, and which signals are displayed. If you run a simulation and the probe window has no trace, then add a trace, and input the expressions for the signals to plot:

Gain: DB(V(Out)/V(Sig))

Phase: P(V(Out)/V(Sig))

Copy and paste these expressions into the add trace window as shown below. The also schematic contains the expressions for the BODE plot in the lower right hand corner

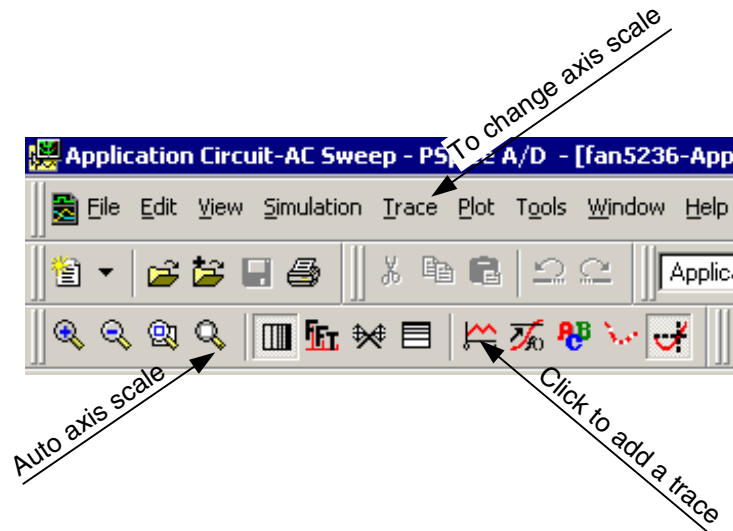


Figure 4. Tips for adjusting probe window settings and adding traces

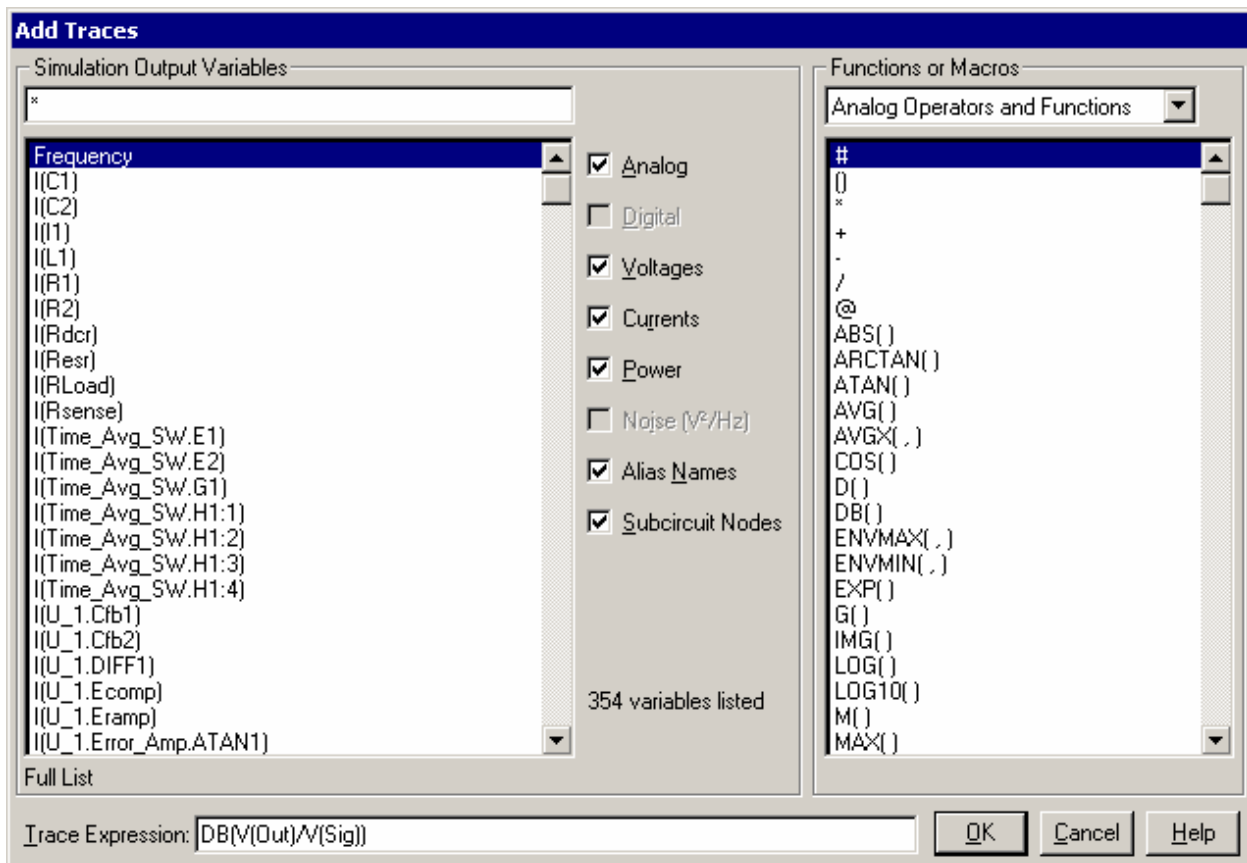


Figure 5. Adding the trace (Gain example)

References:

¹ Ray Ridley, *An Accurate and Practical Small-Signal Model for Current-Mode Control*, 1999,
<http://www.ridleyengineering.com/downloads/curr.pdf>

² Dennis Feucht, *The Tymerski Switch Model*,
<http://www.chipcenter.com/eexpert/dfeucht/dfeucht036.html>

³ Dennis Feucht, *Basic Power Converter Configurations*,
<http://www.chipcenter.com/eexpert/dfeucht/dfeucht037.html>

⁴ Ray Kendall, *Modular macromodeling techniques for Spice simulators*, EDN, March 7, 2002
<http://www.reed-electronics.com/ednmag/contents/images/198891.pdf>

ON Semiconductor and  are trademarks of Semiconductor Components Industries, LLC dba ON Semiconductor or its subsidiaries in the United States and/or other countries. ON Semiconductor owns the rights to a number of patents, trademarks, copyrights, trade secrets, and other intellectual property. A listing of ON Semiconductor's product/patent coverage may be accessed at www.onsemi.com/site/pdf/Patent-Marking.pdf. ON Semiconductor reserves the right to make changes without further notice to any products herein. ON Semiconductor makes no warranty, representation or guarantee regarding the suitability of its products for any particular purpose, nor does ON Semiconductor assume any liability arising out of the application or use of any product or circuit, and specifically disclaims any and all liability, including without limitation special, consequential or incidental damages. Buyer is responsible for its products and applications using ON Semiconductor products, including compliance with all laws, regulations and safety requirements or standards, regardless of any support or applications information provided by ON Semiconductor. "Typical" parameters which may be provided in ON Semiconductor data sheets and/or specifications can and do vary in different applications and actual performance may vary over time. All operating parameters, including "Typicals" must be validated for each customer application by customer's technical experts. ON Semiconductor does not convey any license under its patent rights nor the rights of others. ON Semiconductor products are not designed, intended, or authorized for use as a critical component in life support systems or any FDA Class 3 medical devices or medical devices with a same or similar classification in a foreign jurisdiction or any devices intended for implantation in the human body. Should Buyer purchase or use ON Semiconductor products for any such unintended or unauthorized application, Buyer shall indemnify and hold ON Semiconductor and its officers, employees, subsidiaries, affiliates, and distributors harmless against all claims, costs, damages, and expenses, and reasonable attorney fees arising out of, directly or indirectly, any claim of personal injury or death associated with such unintended or unauthorized use, even if such claim alleges that ON Semiconductor was negligent regarding the design or manufacture of the part. ON Semiconductor is an Equal Opportunity/Affirmative Action Employer. This literature is subject to all applicable copyright laws and is not for resale in any manner.

PUBLICATION ORDERING INFORMATION

LITERATURE FULFILLMENT:

Literature Distribution Center for ON Semiconductor
19521 E. 32nd Pkwy, Aurora, Colorado 80011 USA
Phone: 303-675-2175 or 800-344-3860 Toll Free USA/Canada
Fax: 303-675-2176 or 800-344-3867 Toll Free USA/Canada
Email: orderlit@onsemi.com

N. American Technical Support: 800-282-9855 Toll Free
USA/Canada
Europe, Middle East and Africa Technical Support:
Phone: 421 33 790 2910
Japan Customer Focus Center
Phone: 81-3-5817-1050

ON Semiconductor Website: www.onsemi.com
Order Literature: <http://www.onsemi.com/orderlit>
For additional information, please contact your local
Sales Representative