



Is Now Part of



**ON Semiconductor®**

To learn more about ON Semiconductor, please visit our website at  
[www.onsemi.com](http://www.onsemi.com)

ON Semiconductor and the ON Semiconductor logo are trademarks of Semiconductor Components Industries, LLC dba ON Semiconductor or its subsidiaries in the United States and/or other countries. ON Semiconductor owns the rights to a number of patents, trademarks, copyrights, trade secrets, and other intellectual property. A listing of ON Semiconductor's product/patent coverage may be accessed at [www.onsemi.com/site/pdf/Patent-Marking.pdf](http://www.onsemi.com/site/pdf/Patent-Marking.pdf). ON Semiconductor reserves the right to make changes without further notice to any products herein. ON Semiconductor makes no warranty, representation or guarantee regarding the suitability of its products for any particular purpose, nor does ON Semiconductor assume any liability arising out of the application or use of any product or circuit, and specifically disclaims any and all liability, including without limitation special, consequential or incidental damages. Buyer is responsible for its products and applications using ON Semiconductor products, including compliance with all laws, regulations and safety requirements or standards, regardless of any support or applications information provided by ON Semiconductor. "Typical" parameters which may be provided in ON Semiconductor data sheets and/or specifications can and do vary in different applications and actual performance may vary over time. All operating parameters, including "Typicals" must be validated for each customer application by customer's technical experts. ON Semiconductor does not convey any license under its patent rights nor the rights of others. ON Semiconductor products are not designed, intended, or authorized for use as a critical component in life support systems or any FDA Class 3 medical devices or medical devices with a same or similar classification in a foreign jurisdiction or any devices intended for implantation in the human body. Should Buyer purchase or use ON Semiconductor products for any such unintended or unauthorized application, Buyer shall indemnify and hold ON Semiconductor and its officers, employees, subsidiaries, affiliates, and distributors harmless against all claims, costs, damages, and expenses, and reasonable attorney fees arising out of, directly or indirectly, any claim of personal injury or death associated with such unintended or unauthorized use, even if such claim alleges that ON Semiconductor was negligent regarding the design or manufacture of the part. ON Semiconductor is an Equal Opportunity/Affirmative Action Employer. This literature is subject to all applicable copyright laws and is not for resale in any manner.

# AN-4189

## Guidance of Using Self Valley Fill Calculation Tool for FL77904/FL77944/FL77905

### Overview

This application note provides a step-by-step guide for using the Self Valley Fill (SVF) calculation Tool to assign capacitance for alleviating flicker problem of direct-AC driven LED-lighting fixtures.

### Design Flow

The flow chart of using the SVF calculation tool is drawn in Figure 1. The tool is used to determine required SVF capacitance for a well-designed system to meet specific flicker requirement [1]. Before using the tool, the system design needs to be completed except placing the capacitors. You may use LED Direct-AC Driver Design Tool [2] to generate the pre-defined system design.

The calculation tool's looks like Figure 2. It can be separates into four parts with assistive figures. How to use these four parts are explained in the following subsections.

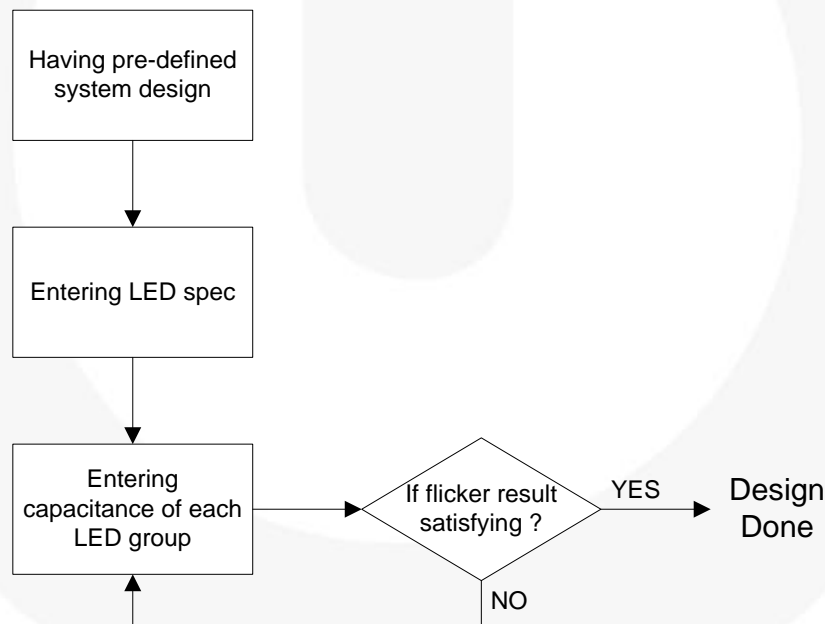


Figure 1. Flow Chart of Using SVF Calculation Tool

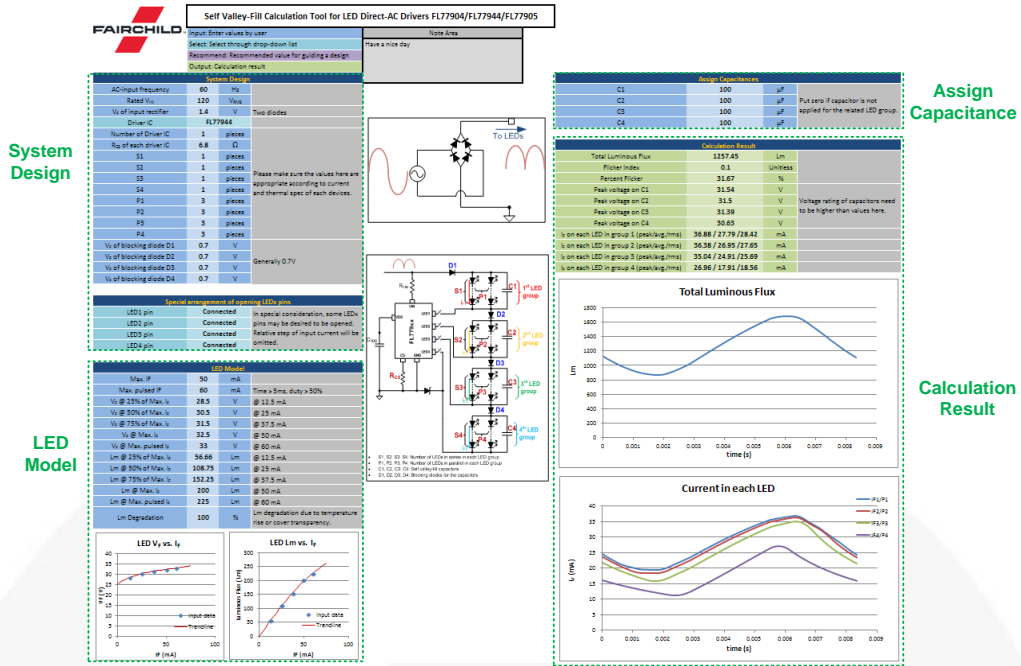


Figure 2. Appearance of the DACD Design Tool

### Step 1: Entering Pre-defined System Design

In the system-design section, completed design details of driver and LED string need to be entered. The driver IC grid and special arrangement section are drop-down lists. You can choose which driver IC you want to design with and which pin you want it to be opened. Refer to [1] for more explanation.

Blocking diodes (D1~D4) are required part when applying SVF circuit. These diodes can be general-purpose diodes or LED. Forward voltage of the blocking diodes also needs to be filled into the tool.

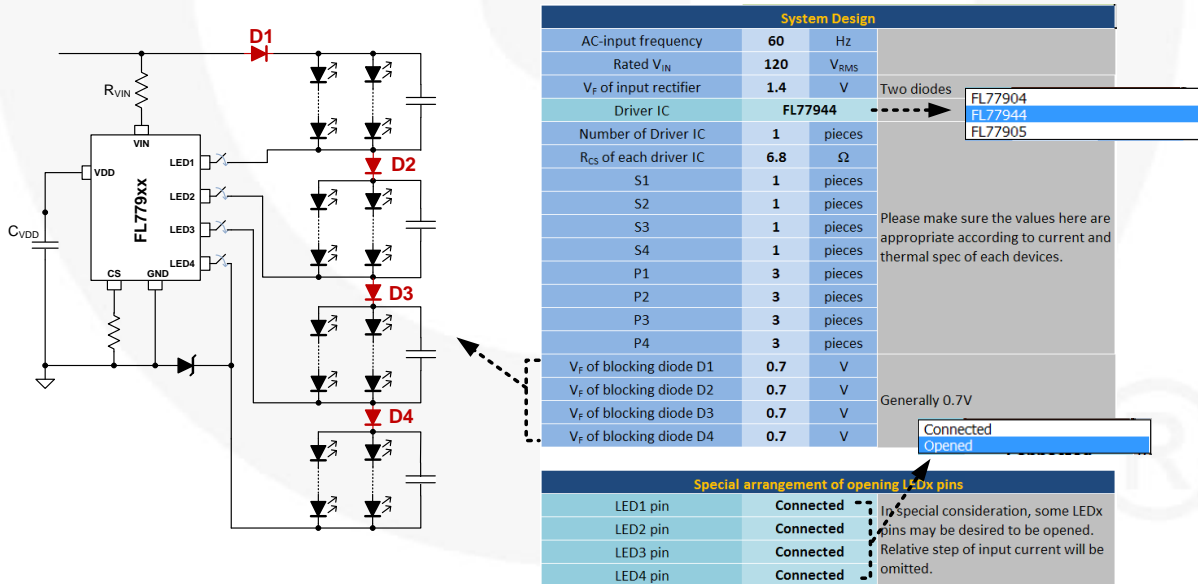


Figure 3. System-Specification Section

### Step 2: Entering Specification of Chosen LED

Inputs in the LED-model section are used for generating much realistic LED model for further calculation. This information can be got from data sheet of the LED. Correct input is needed to have much realistic result.

| LED Model                                   |        |    |                                                               |
|---------------------------------------------|--------|----|---------------------------------------------------------------|
| Max. IF                                     | 50     | mA |                                                               |
| Max. pulsed IF                              | 60     | mA | Time > 5ms, duty > 50%                                        |
| V <sub>F</sub> @ 25% of Max. I <sub>F</sub> | 28.5   | V  | @ 12.5 mA                                                     |
| V <sub>F</sub> @ 50% of Max. I <sub>F</sub> | 30.5   | V  | @ 25 mA                                                       |
| V <sub>F</sub> @ 75% of Max. I <sub>F</sub> | 31.5   | V  | @ 37.5 mA                                                     |
| V <sub>F</sub> @ Max. I <sub>F</sub>        | 32.5   | V  | @ 50 mA                                                       |
| V <sub>F</sub> @ Max. pulsed I <sub>F</sub> | 33     | V  | @ 60 mA                                                       |
| Lm @ 25% of Max. I <sub>F</sub>             | 56.66  | Lm | @ 12.5 mA                                                     |
| Lm @ 50% of Max. I <sub>F</sub>             | 108.75 | Lm | @ 25 mA                                                       |
| Lm @ 75% of Max. I <sub>F</sub>             | 152.25 | Lm | @ 37.5 mA                                                     |
| Lm @ Max. I <sub>F</sub>                    | 200    | Lm | @ 50 mA                                                       |
| Lm @ Max. pulsed I <sub>F</sub>             | 225    | Lm | @ 60 mA                                                       |
| Lm Degradation                              | 100    | %  | Lm degradation due to temperature rise or cover transparency. |

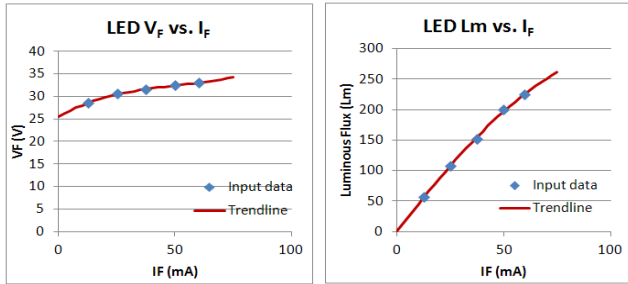


Figure 4. LED-Model Section

### Step 3: Assign Capacitance

Enter the capacitance for SVF circuit for each LED group. The capacitor filters the LED current to be smooth, which alleviates flickering of light output. Larger capacitance results in lower flicker index and percent flicker. It is recommended to have same capacitance for each LED group, but you can also try different capacitance for them. Enter “0” if you do not want to put capacitance for a specific LED group.

| Assign Capacitances |     |    |                                                                 |
|---------------------|-----|----|-----------------------------------------------------------------|
| C1                  | 100 | μF | Put zero if capacitor is not applied for the related LED group. |
| C2                  | 100 | μF |                                                                 |
| C3                  | 100 | μF |                                                                 |
| C4                  | 100 | μF |                                                                 |

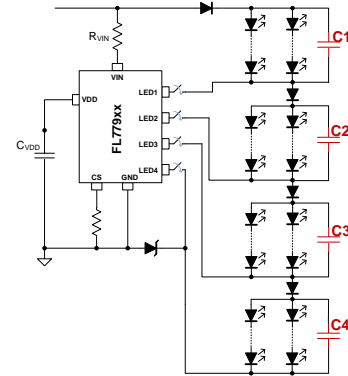


Figure 5. Assign-Capacitance Section

### Step 4: Check Design Result

According to inputs in previous steps, the calculation tool shows predicted luminous flux, flicker index, percent flicker, peak voltage on capacitors, and current on each LED. You may need to change the inputs in the assign-capacitance section of the result of this section cannot meet system requirement.

With smoothed current, peak current of each LED will be reduced. It is a better driving condition for LEDs. Efficacy is possibly slightly better with this condition.

| Calculation Result                                    |                       |          |                                                                  |
|-------------------------------------------------------|-----------------------|----------|------------------------------------------------------------------|
| Total Luminous Flux                                   | 1257.45               | Lm       |                                                                  |
| Flicker Index                                         | 0.1                   | Unitless |                                                                  |
| Percent Flicker                                       | 31.67                 | %        |                                                                  |
| Peak voltage on C1                                    | 31.54                 | V        | Voltage rating of capacitors need to be higher than values here. |
| Peak voltage on C2                                    | 31.5                  | V        |                                                                  |
| Peak voltage on C3                                    | 31.39                 | V        |                                                                  |
| Peak voltage on C4                                    | 30.63                 | V        |                                                                  |
| I <sub>F</sub> on each LED in group 1 (peak/avg./rms) | 36.88 / 27.79 / 28.42 | mA       |                                                                  |
| I <sub>F</sub> on each LED in group 2 (peak/avg./rms) | 36.38 / 26.95 / 27.65 | mA       |                                                                  |
| I <sub>F</sub> on each LED in group 3 (peak/avg./rms) | 35.04 / 24.91 / 25.69 | mA       |                                                                  |
| I <sub>F</sub> on each LED in group 4 (peak/avg./rms) | 26.96 / 17.91 / 18.56 | mA       |                                                                  |

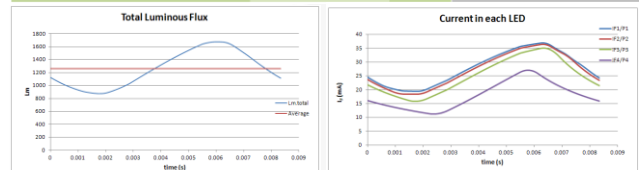


Figure 6. Predicted Outcomes of the Design Result

## References

- [1] “AN-4190 Improve Flicker Performance of Direct AC Driven LED Fixtures with Self Valley Fill,” Fairchild Semiconductor, July 2016.
- [2] “AN-4188 Guidance of Using LED Direct-AC Driver Design Tool for FL77904/FL77944/FL77905,” Fairchild Semiconductor, July 2016.

## Related Datasheets

[FL77904 Phase-cut Dimmable Compact LED Direct AC Driver](#)

[FL77905 Analog/PWM/Phase-cut Dimmable Compact LED Direct AC Driver](#)

[FL77944 Analog/PWM Dimmable High Power LED Direct AC Driver](#)

---

### DISCLAIMER

FAIRCHILD SEMICONDUCTOR RESERVES THE RIGHT TO MAKE CHANGES WITHOUT FURTHER NOTICE TO ANY PRODUCTS HEREIN TO IMPROVE RELIABILITY, FUNCTION, OR DESIGN. FAIRCHILD DOES NOT ASSUME ANY LIABILITY ARISING OUT OF THE APPLICATION OR USE OF ANY PRODUCT OR CIRCUIT DESCRIBED HEREIN; NEITHER DOES IT CONVEY ANY LICENSE UNDER ITS PATENT RIGHTS, NOR THE RIGHTS OF OTHERS.

### LIFE SUPPORT POLICY

FAIRCHILD'S PRODUCTS ARE NOT AUTHORIZED FOR USE AS CRITICAL COMPONENTS IN LIFE SUPPORT DEVICES OR SYSTEMS WITHOUT THE EXPRESS WRITTEN APPROVAL OF THE PRESIDENT OF FAIRCHILD SEMICONDUCTOR CORPORATION.

As used herein:

1. Life support devices or systems are devices or systems which, (a) are intended for surgical implant into the body, or (b) support or sustain life, or (c) whose failure to perform when properly used in accordance with instructions for use provided in the labeling, can be reasonably expected to result in significant injury to the user.
2. A critical component is any component of a life support device or system whose failure to perform can be reasonably expected to cause the failure of the life support device or system, or to affect its safety or effectiveness.

ON Semiconductor and  are trademarks of Semiconductor Components Industries, LLC dba ON Semiconductor or its subsidiaries in the United States and/or other countries. ON Semiconductor owns the rights to a number of patents, trademarks, copyrights, trade secrets, and other intellectual property. A listing of ON Semiconductor's product/patent coverage may be accessed at [www.onsemi.com/site/pdf/Patent-Marking.pdf](http://www.onsemi.com/site/pdf/Patent-Marking.pdf). ON Semiconductor reserves the right to make changes without further notice to any products herein. ON Semiconductor makes no warranty, representation or guarantee regarding the suitability of its products for any particular purpose, nor does ON Semiconductor assume any liability arising out of the application or use of any product or circuit, and specifically disclaims any and all liability, including without limitation special, consequential or incidental damages. Buyer is responsible for its products and applications using ON Semiconductor products, including compliance with all laws, regulations and safety requirements or standards, regardless of any support or applications information provided by ON Semiconductor. "Typical" parameters which may be provided in ON Semiconductor data sheets and/or specifications can and do vary in different applications and actual performance may vary over time. All operating parameters, including "Typicals" must be validated for each customer application by customer's technical experts. ON Semiconductor does not convey any license under its patent rights nor the rights of others. ON Semiconductor products are not designed, intended, or authorized for use as a critical component in life support systems or any FDA Class 3 medical devices or medical devices with a same or similar classification in a foreign jurisdiction or any devices intended for implantation in the human body. Should Buyer purchase or use ON Semiconductor products for any such unintended or unauthorized application, Buyer shall indemnify and hold ON Semiconductor and its officers, employees, subsidiaries, affiliates, and distributors harmless against all claims, costs, damages, and expenses, and reasonable attorney fees arising out of, directly or indirectly, any claim of personal injury or death associated with such unintended or unauthorized use, even if such claim alleges that ON Semiconductor was negligent regarding the design or manufacture of the part. ON Semiconductor is an Equal Opportunity/Affirmative Action Employer. This literature is subject to all applicable copyright laws and is not for resale in any manner.

## PUBLICATION ORDERING INFORMATION

### LITERATURE FULFILLMENT:

Literature Distribution Center for ON Semiconductor  
19521 E. 32nd Pkwy, Aurora, Colorado 80011 USA  
**Phone:** 303-675-2175 or 800-344-3860 Toll Free USA/Canada  
**Fax:** 303-675-2176 or 800-344-3867 Toll Free USA/Canada  
**Email:** [orderlit@onsemi.com](mailto:orderlit@onsemi.com)

**N. American Technical Support:** 800-282-9855 Toll Free  
USA/Canada  
**Europe, Middle East and Africa Technical Support:**  
Phone: 421 33 790 2910  
**Japan Customer Focus Center**  
Phone: 81-3-5817-1050

**ON Semiconductor Website:** [www.onsemi.com](http://www.onsemi.com)  
**Order Literature:** <http://www.onsemi.com/orderlit>  
For additional information, please contact your local  
Sales Representative