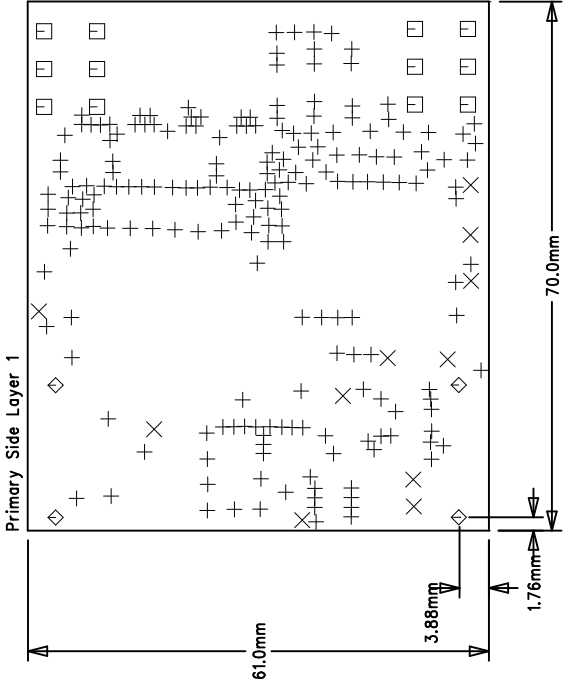


REVISION RECORD			
LTR	ECO NO:	APPROVED:	DATE:

FABRICATION DRAWING



SIZE	QTY	SYM	PLATED	TOL
0.508	200	+	YES	+/-0.0
1	11	×	YES	+/-0.0
1.9	12	□	YES	+/-0.0
1.6	4	◇	YES	+/-0.0

COMPLIANT RoHS DIRECTIVE 2011/65/EU

MATERIAL	FR4 IMPROVED (low CTE)	
BOARD THICKNESS	1.6mm /63mils	
STACKUP	MC4 /4LAYERS	
MINIMAL GAP	203um /8.0mils	
MINIMAL SLIVER	203um /8.0mils	
COPPER THICKNESS	35um(1oz)ot START	
FINISH THICKNESS	CHEMICAL NiAu	
SOLDER MASK	GREEN TOP&BOT	
SILKSCREEN	WHITE TOP&BOT	
ALL BOARD ELECTRICALLY TESTED		
MANUFACTURE 'S LOGO & DATECODE MARKED ON BOTTOM SOLDERMASK		

REFERENCE DOCUMENT NCP1562_FABNOTES.PDF
FOR COMPLETE FABRICATION DRAWING NOTES

COMPANY: **ON Semiconductor**

TITLE: NCP1566 85W 12V Version 1.0

CODE: TLS	SIZE: B	DRAWING NO: NCP1566	REV: 01
--------------	------------	------------------------	------------

SCALE: 1/1 SHEET: 3 OF 3

DRAWN:	DYPE – Tech	DATED:	w41/2018
CHECKED:	C. BASSO	DATED:	w41/2018
QUALITY CONTROL:		DATED:	QC Date
QC By		DATED:	Release Date
RELEASED:			
Released By			