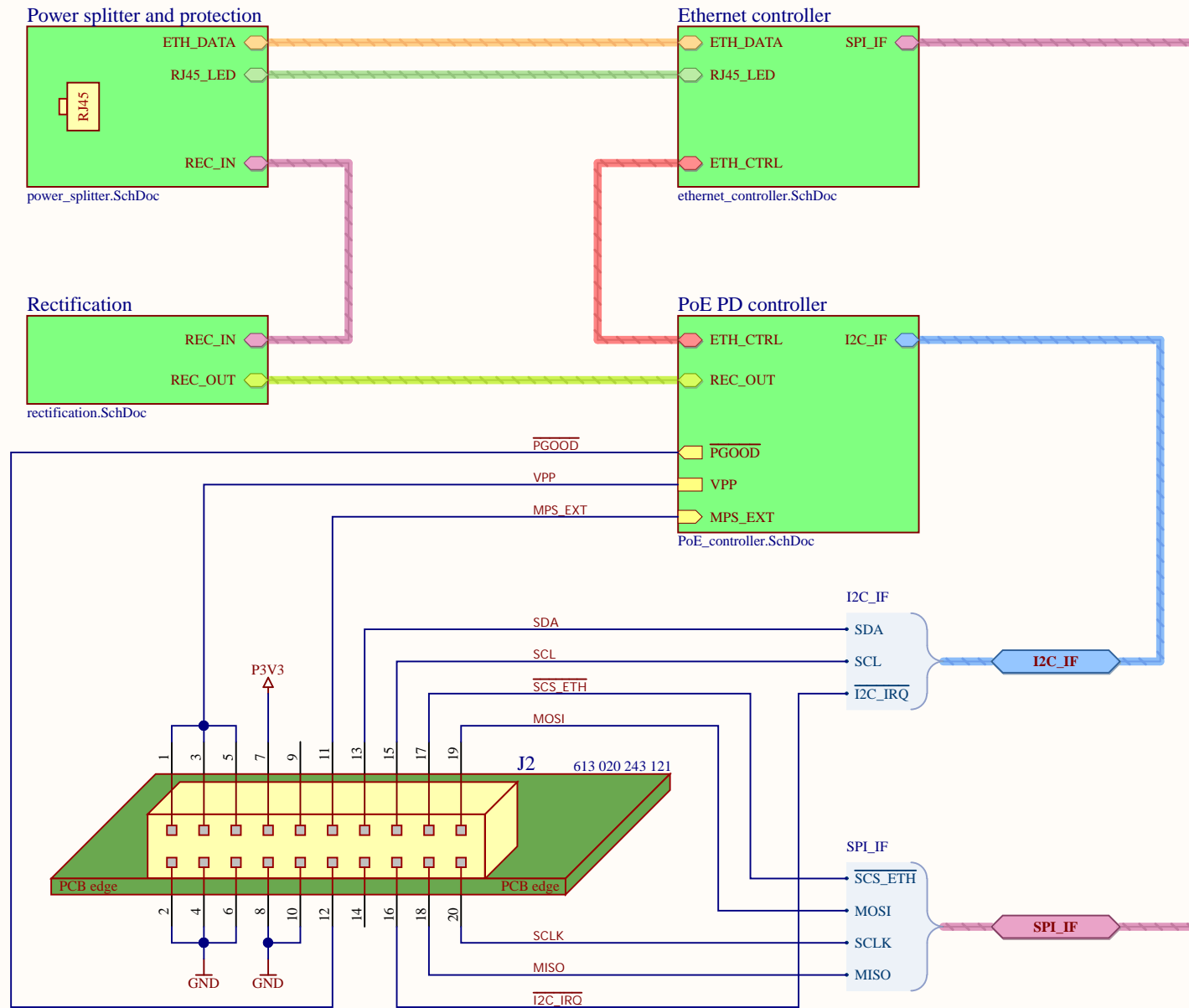
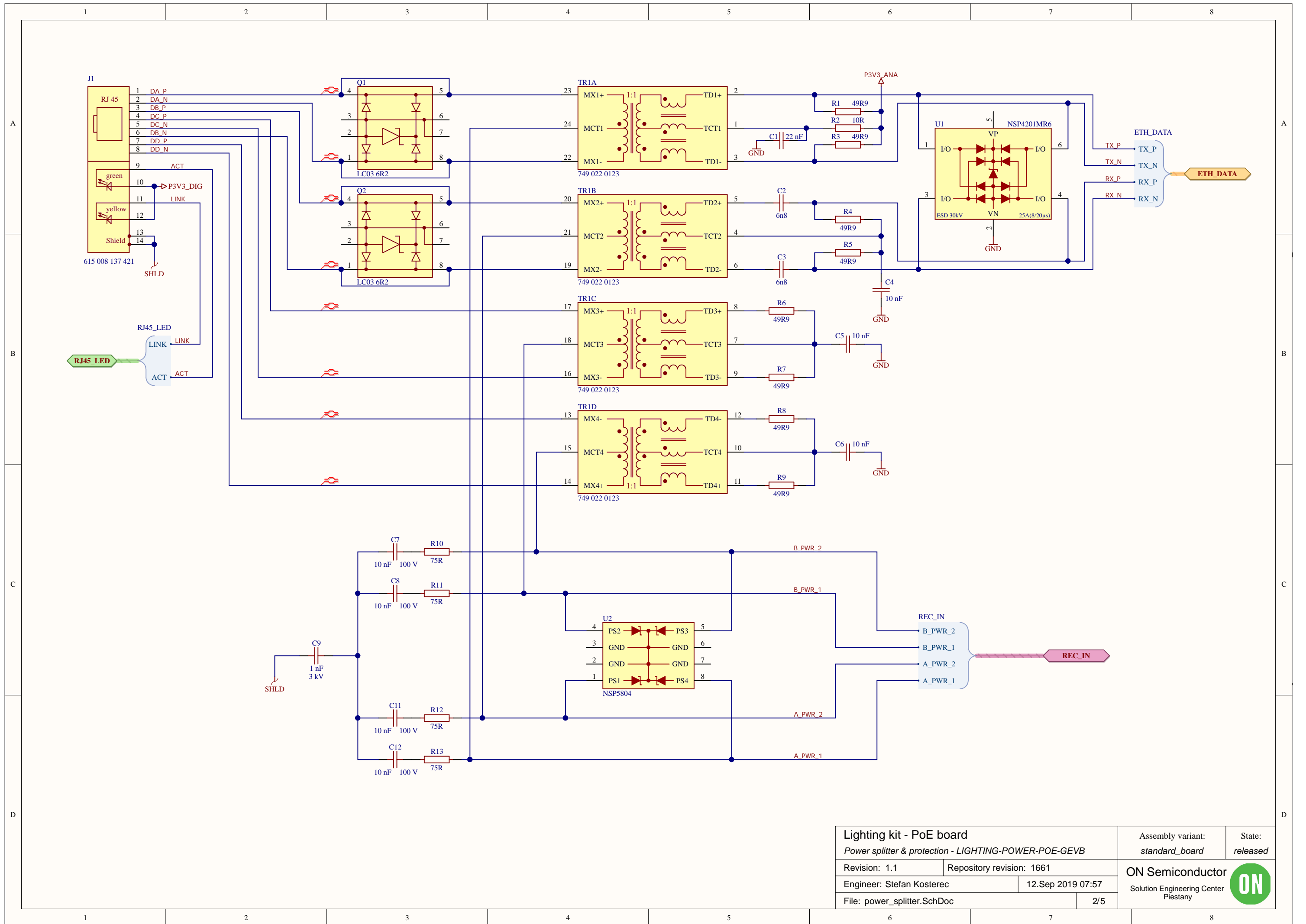


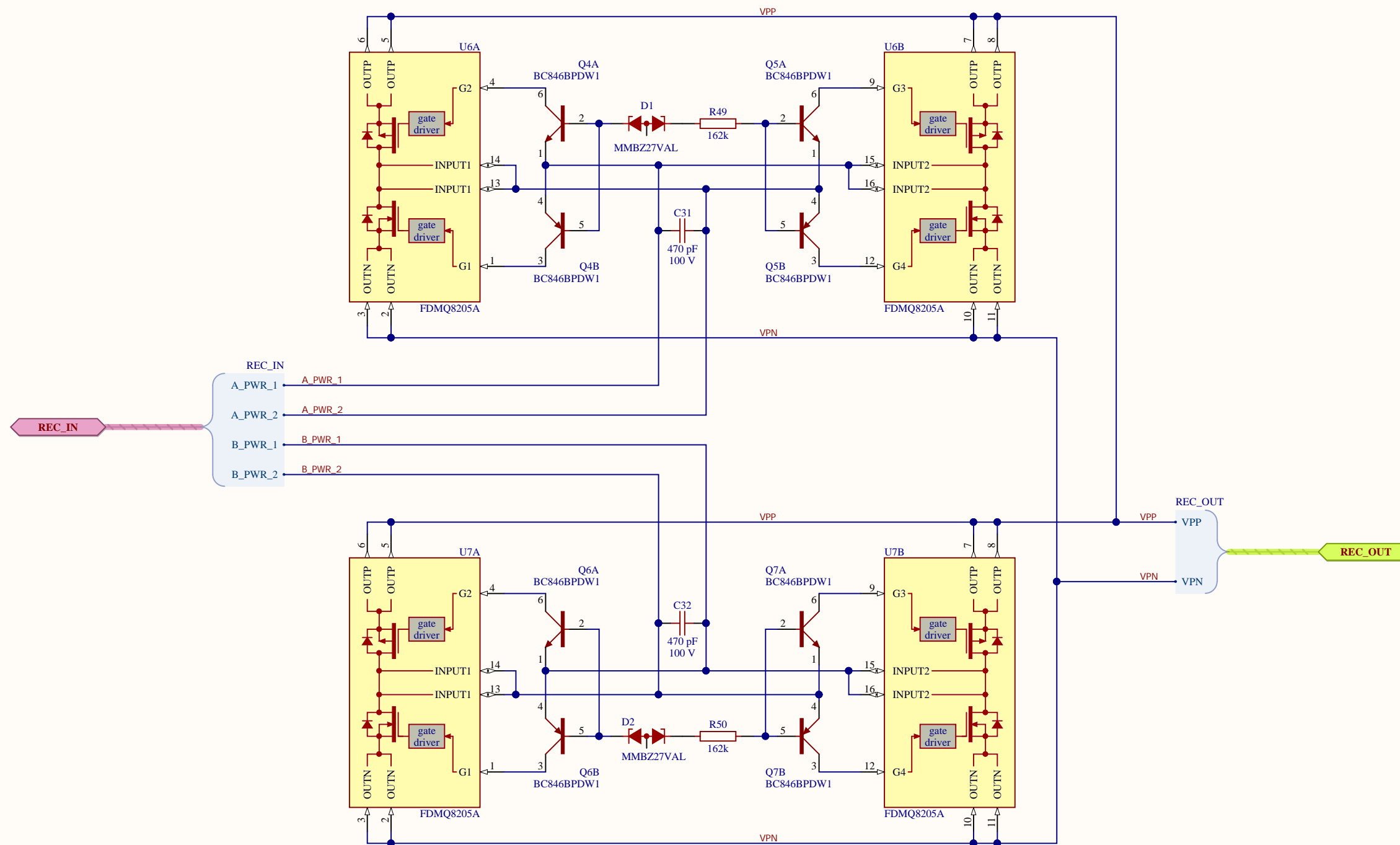
Lighting kit - PoE board





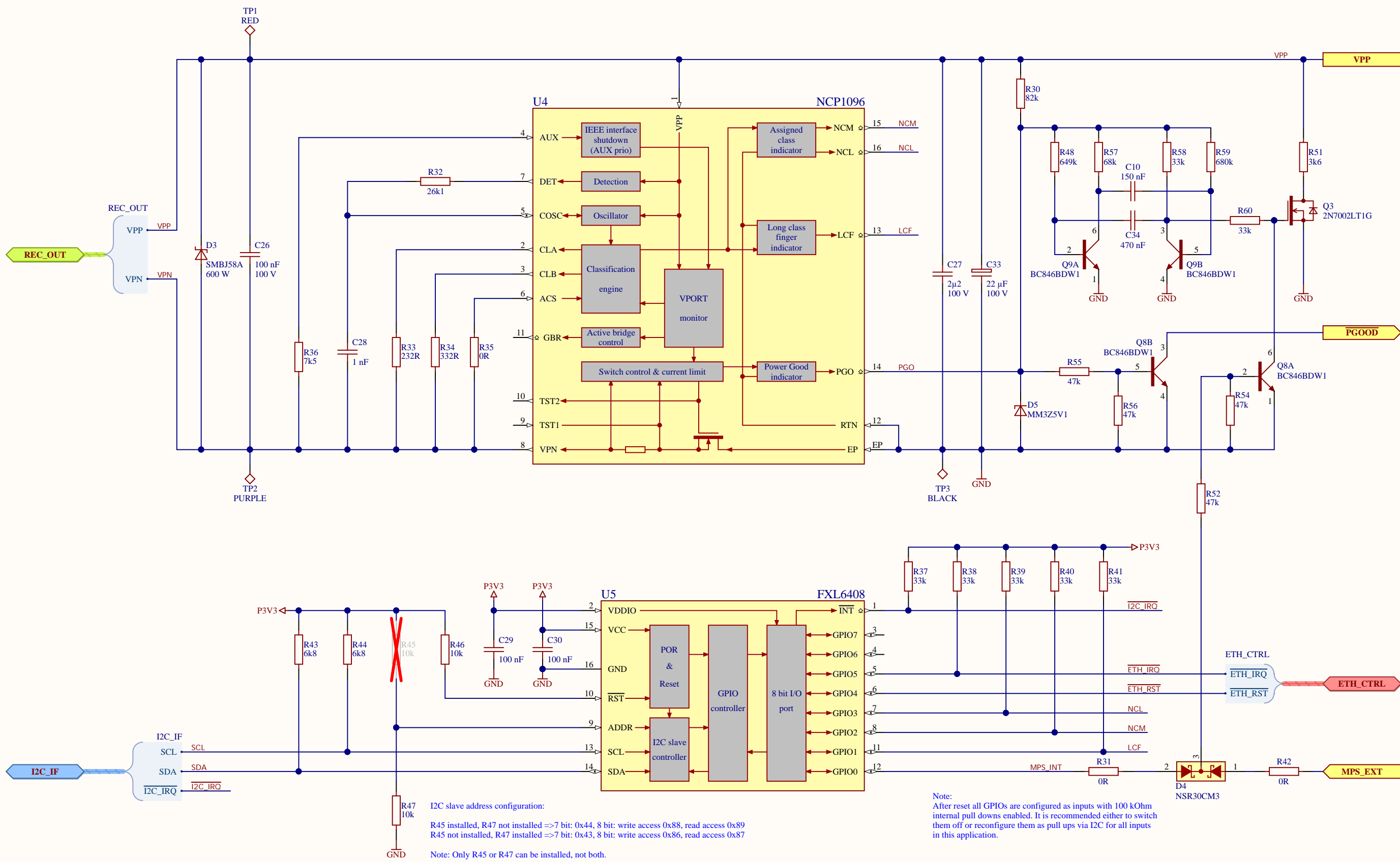
Lighting kit - PoE board		Assembly variant:	State:
Power splitter & protection - LIGHTING-POWER-POE-GEVB		standard_board	released
Revision: 1.1	Repository revision: 1661	ON Semiconductor Solution Engineering Center Piešťany	
Engineer: Stefan Kosterec	12.Sep 2019 07:57		
File: power_splitter.SchDoc	2/5		





Lighting kit - PoE board		Assembly variant:	State:
Rectification - LIGHTING-POWER-POE-GEVB		standard_board	released
Revision: 1.1	Repository revision: 1661	ON Semiconductor	
Engineer: Stefan Kosterec	12.Sep 2019 07:58	Solution Engineering Center	
File: rectification.SchDoc	3/5	Piešťany	



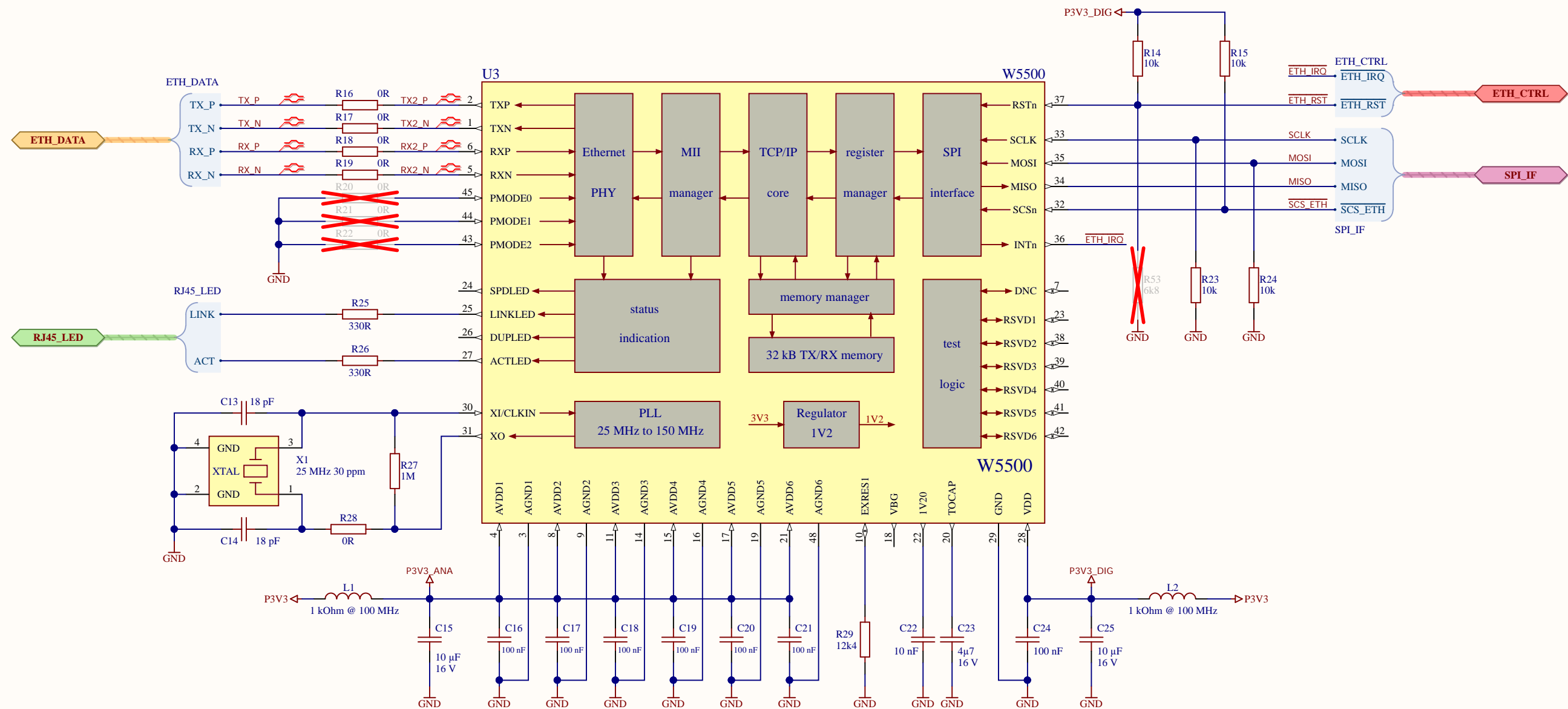


I2C slave address configuration:
 R45 installed, R47 not installed => 7 bit: 0x44, 8 bit: write access 0x88, read access 0x89
 R45 not installed, R47 installed => 7 bit: 0x43, 8 bit: write access 0x86, read access 0x87
 Note: Only R45 or R47 can be installed, not both.

Note:
 After reset all GPIOs are configured as inputs with 100 kOhm internal pull downs enabled. It is recommended either to switch them off or reconfigure them as pull ups via I2C for all inputs in this application.

Lighting kit - PoE board		Assembly variant:	State:
<i>PoE PD controller - LIGHTING-POWER-POE-GEVB</i>		<i>standard_board</i>	<i>released</i>
Revision: 1.1	Repository revision: 1661	ON Semiconductor Solution Engineering Center Piestany	
Engineer: Stefan Kosterec	12.Sep 2019 07:58		
File: PoE_controller.SchDoc	4/5		





U3 operation mode is configured via PMODE [2:0].

All three lines have internal pull up resistors, presence of R20, R21 & R22 selects particular mode:

PMODE [2] [1] [0]	R22	R21	R20	
0 0 0	x	x	x	=> 10BT Half-duplex, Auto-negotiation disabled
0 0 1	x	x	-	=> 10BT Full-duplex, Auto-negotiation disabled
0 1 0	x	-	x	=> 100BT Half-duplex, Auto-negotiation disabled
0 1 1	x	-	-	=> 100BT Full-duplex, Auto-negotiation disabled
1 0 0	-	x	x	=> 100BT Half-duplex, Auto-negotiation enabled
1 0 1	-	x	-	=> Not used, reserved
1 1 0	-	-	x	=> Not used, reserved

standard board assembled for this configuration
 1 1 1 - - - => All capable, Auto-negotiation enabled

Lighting kit - PoE board		Assembly variant:	State:
Ethernet controller - LIGHTING-POWER-POE-GEVB		standard_board	released
Revision: 1.1	Repository revision: 1661	ON Semiconductor	
Engineer: Stefan Kosterec	12.Sep1 2019 07:59	Solution Engineering Center Piešťany	
File: ethernet_controller.SchDoc	5/5	ON	