

NCV891234, NCV891334

NCV891234, NCV891334 Evaluation Board User's Manual



ON Semiconductor®

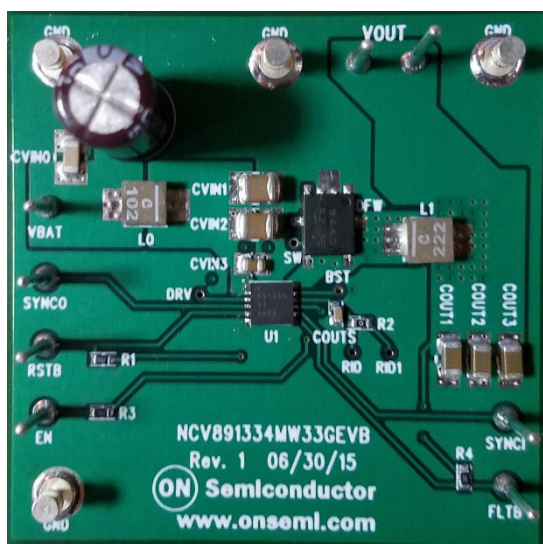
www.onsemi.com

EVAL BOARD USER'S MANUAL

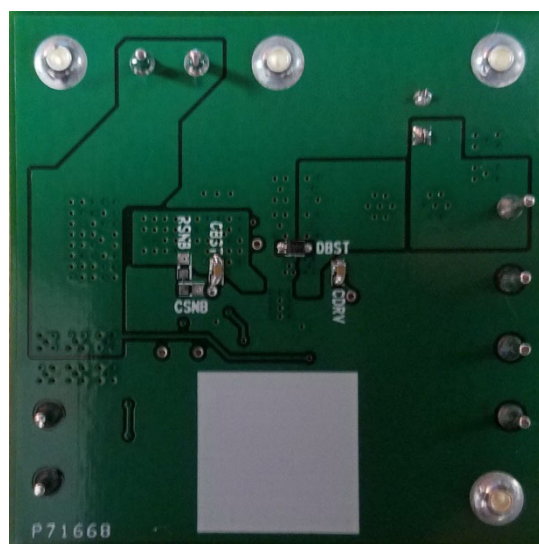
Description

The NCV891x34 is a Dual Mode regulator intended for Automotive, battery-connected applications. The output is fixed to either 3.3 V or 5.0 V, capable of delivering 2.0 A (NCV891234) or 3.0 A (NCV891334). At low output currents (≤ 50 mA), the device will operate in LDO mode, switching to PWM mode as current increases beyond 50 mA. The device is equipped with SYNCI and SYNCO pins to synchronize to an external clock and/or another NCV891x34. A reset (with fixed delay) and a fault pin (flagging low input voltage and high temperature warnings) simplify interfacing with a microcontroller.

This document will help the user to set up the hardware and to make demonstration kit running. All evaluation kit components will be described (evaluation board, connections, jumper's configuration). A quick test procedure will be also described to guide the user.



Top Side



Bottom Side

Figure 1. Evaluation Board Photo

Features and Benefits

- 40 μ A I_q in Light Load Condition
- 2.0 A Maximum Output Current in PWM Mode in NCV891234
- 3.0 A Maximum Output Current in PWM Mode in NCV891334
- Internal N-channel Power Switch
- V_{IN} Operating Range 3.7 V to 36 V, Withstands Load Dump to 45 V
- Logic Level Enable Pin can be Tied to Battery

- Fixed Output Voltage of 5.0 V or 3.3 V with $\pm 2\%$ Accuracy
- 2 MHz Free-running Switching Frequency
- Input and Output Synchronization Pins

Typical Applications

- Safety – Vision Systems
- Audio, Infotainment
- Instrumentation
- Telematics

NCV891234, NCV891334

BLOCK DIAGRAM

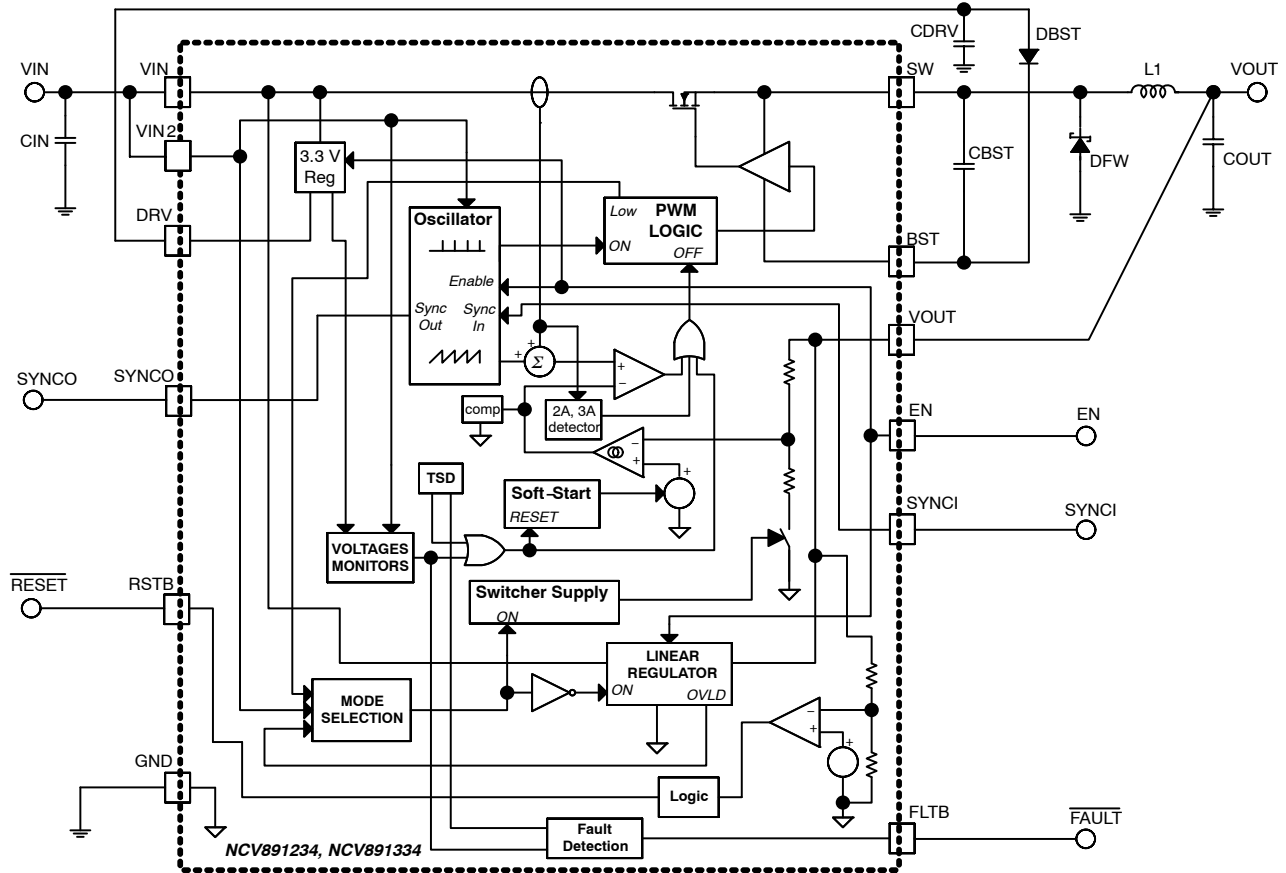


Figure 2. NCV891x34 Simplified Block Diagram

TYPICAL APPLICATION

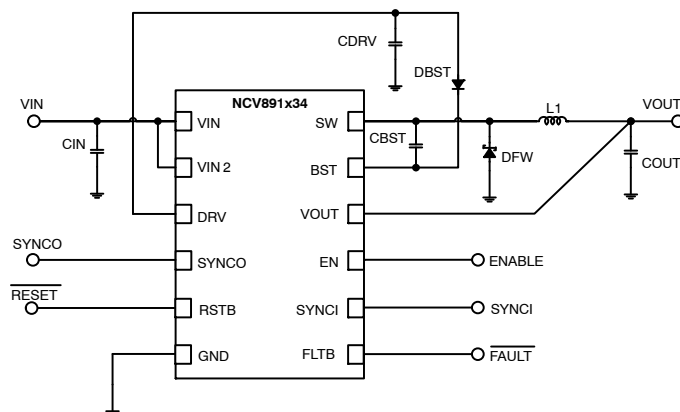


Figure 3. NCV891x34 Typical Application Diagram

NCV891234, NCV891334

Table 1. EVALUATION BOARD TERMINALS

Pin Number	Pin Name	Function
1	VBAT	Input voltage from battery. Place an input filter capacitor in close proximity to this pin.
4	SYNCO	Out-of-phase synchronization output. Turn-on of the Power Switch causes the SYNCO signal to fall (and rise half a switching period later).
5	RSTB	Reset function. Open drain output, pulling down to ground when output voltage is out of regulation.
6	GND	Battery return and output voltage ground reference.
7	FLT B	Fault flag indicating various fault conditions for the part.
8	SYNCl	Synchronization input. Connecting an external clock to this pin synchronizes switching to the rising edge of the SYNCl signal.
9	EN	This TTL compatible Enable input allows the direct connection of Battery as the enable signal. Grounding this signal stops switching and reduces quiescent current draw to a minimum.
10	VOU T	Output voltage feedback and LDO output. Feedback of output voltage used for regulation, as well as LDO output in LDO mode.

Table 2. ABSOLUTE MAXIMUM RATINGS

(Voltages are with respect to GND)

Rating	Value	Units
DC supply voltage (VBAT)	–0.3 to 45	V
DC supply voltage (EN)	–0.3 to 40	V
DC supply voltage (VOU T)	–0.3 to 18	V
DC supply voltage (SYNCl, RSTB, and FLT B)	–0.3 to 6	V
DC supply voltage (SYNCO)	–0.3 to 3.6	V
Storage Temperature Range	–55 to +150	°C

Stresses exceeding those listed in the Maximum Ratings table may damage the device. If any of these limits are exceeded, device functionality should not be assumed, damage may occur and reliability may be affected.

Table 3. ELECTRICAL CHARACTERISTICS

Characteristics	Conditions	Typical Value	Units
Regulation			
Output Voltage (NCV891x34MW33GEVB)		3.3	V
Output Voltage (NCV891x34MW50GEVB)		5.0	V
Switching			
Switching Frequency		2.0	MHz
Soft-start Time		1.4	ms
Synchronization Frequency Range		1.8 to 2.5	MHz
Current Limit			
Peak Current Limit (NCV891234MWxxGEVB)		3.25	A
Peak Current Limit (NCV891334MWxxGEVB)		4.4	A
Protections			
Input Undervoltage Lockout (UVLO)	V _{BAT} decreasing	3.1	V
Input Overvoltage Protection	V _{BAT} increasing	37.7	V
Thermal Shutdown	T _J rising	170	°C

Product parametric performance is indicated in the Electrical Characteristics for the listed test conditions, unless otherwise noted. Product performance may not be indicated by the Electrical Characteristics if operated under different conditions.

Quick-Start Guide

The following steps will get you familiar with the setup of inputs and outputs of the NCV891x34.

Required Equipment

- | | |
|---|-------------|
| 1 DC Source – ≥ 40 V, ≥ 2 A capable | VBAT |
| 1 Oscilloscope – 2 Channel minimum | VOUT and SW |
| 1 Multi-meter | VOUT |
| 1 DC Electronic Load – 4 A capable | ILOAD |
| 1 Clip to Clip Lead or equivalent | |

1. Connect DC source set to 13.2 V DC between the VBAT and GND terminals in the upper left of the evaluation board.
2. Connect a multi-meter or oscilloscope probe between the VOUT and GND terminals located in the upper right of the evaluation board.
3. Connect an oscilloscope probe between the SW and GND terminals located in the center of the evaluation board.
4. Connect a jumper wire between VBAT to the EN input.
Verify that VOUT is:
 - a.) 3.3 V for NCV891x34MW33GEVB
 - b.) 5.0 V for NCV891x34MW50GEVB
5. Apply a 40 mA load to VOUT.
Verify that VOUT is at the necessary regulated voltage and the SW signal shows that DC level (LDO mode).
6. Increase the load on VOUT to 1.5 A.
Verify that VOUT is at the necessary regulated voltage and the SW signal shows a stable 2 MHz

pulsed waveform with amplitude approximately between VBAT and GND (PWM mode).

7. While at load, increase VBAT to 21 V.
Verify that the SW signal now shows a stable 1 MHz pulsed waveform with amplitude approximately between VBAT and GND.
8. Increase VBAT to 39.5 V.
Verify the switching regulator turns off and there is 0 V at VOUT.
9. Reduce VBAT to 13.2 V.
Verify that VOUT is restored to its previous value and that the SW signal returns to a 2 MHz pulsed waveform with amplitude approximately between VBAT and GND.
10. Remove the load on VOUT.
Verify that VOUT is at the necessary regulated voltage and the SW signal shows that DC level (LDO mode).
11. Remove the jumper between VBAT the EN input.
Verify the switching regulator turns off and there is 0 V at VOUT.
12. Disconnect VBAT from the board.

Soft Start

The NCV891x34 contains a battery-connectable EN pin for the primary buck regulator. A common setup includes the following connections:

EN \rightarrow VIN

When the EN connection on the board are as shown above, the following startup profile can be seen on an oscilloscope:

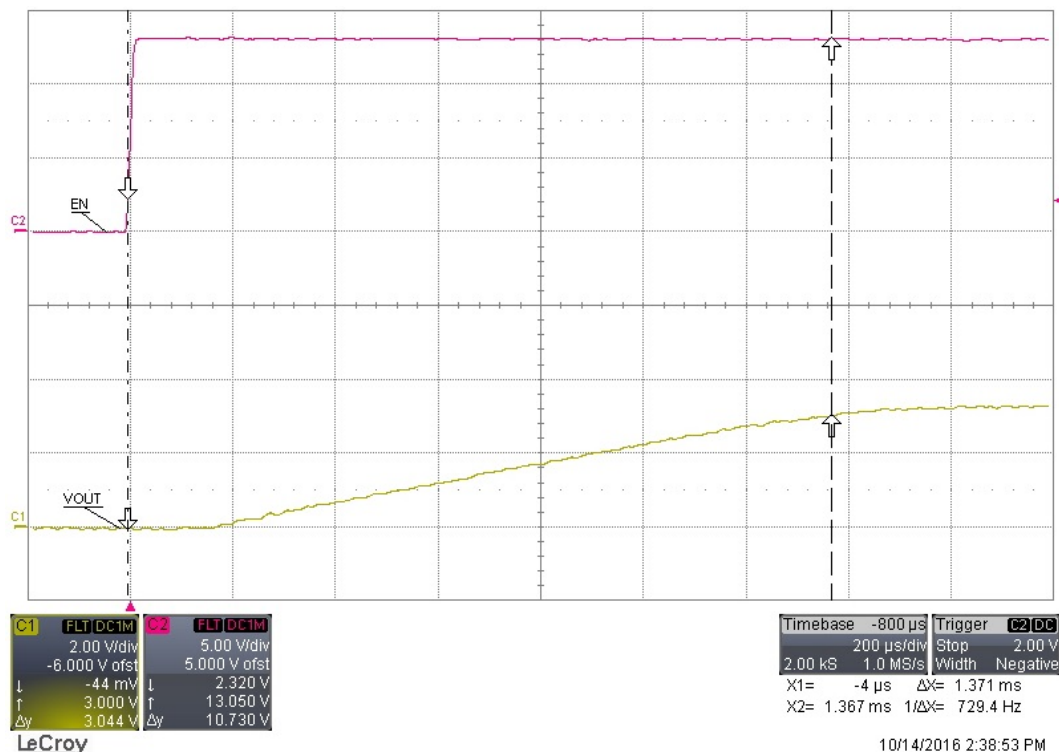


Figure 4. Typical NCV891x34 Startup Profile

NCV891234, NCV891334

EMI Filter

In a typical application, an LC filter is used on the input line of a buck regulator to filter EMI from the device. On this evaluation board, an LC filter is pre-populated to allow you to perform EMI testing directly with this evaluation board.

L0: 1.0 μ H
CVIN0: 4.7 μ F
CB1: 100 μ F

An input filter can drastically reduce the emissions from a switching regulator.



Figure 5. LC Filter on VIN Line

Efficiency

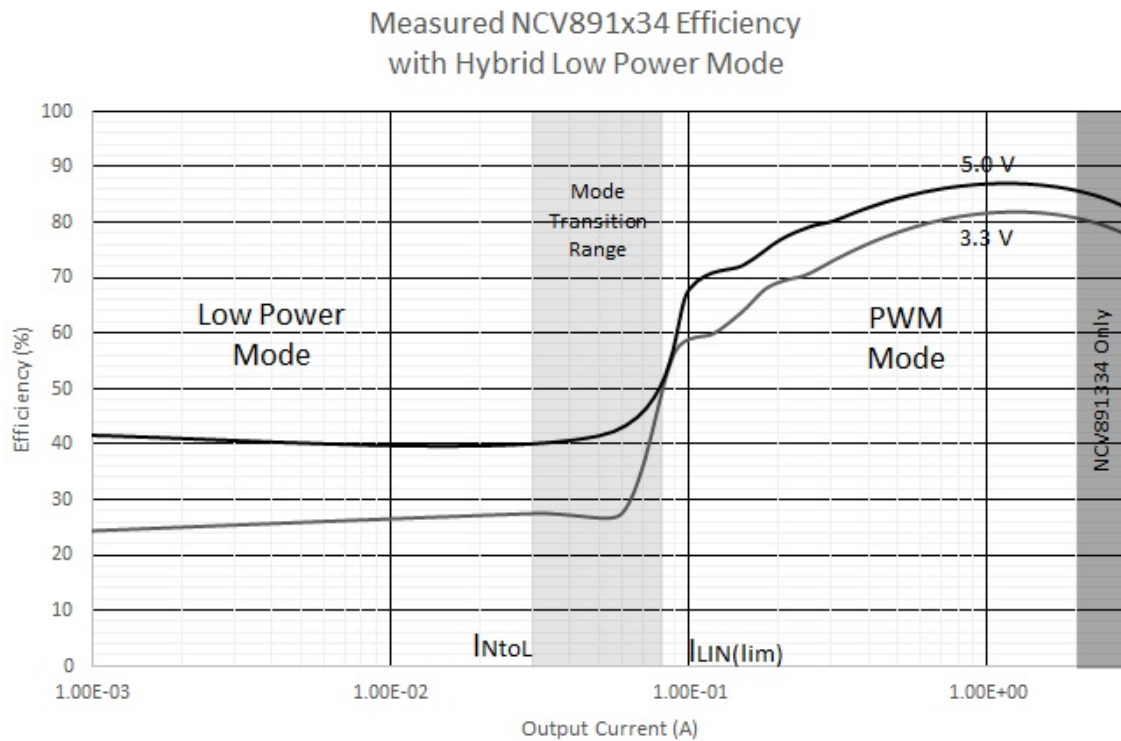


Figure 6. NCV891x34 Efficiency Curves

SCHEMATIC

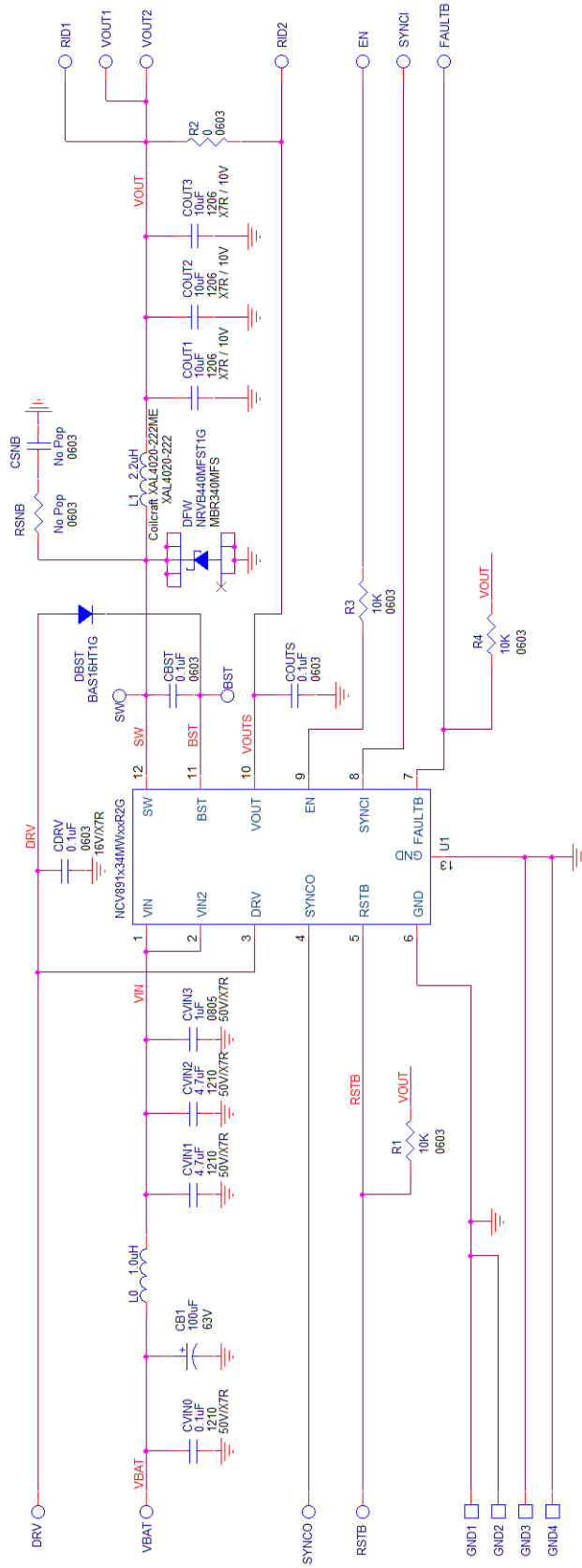


Figure 7. NCV891x34MWxxGEVB Evaluation Board Schematic – Rev.1

NCV891234, NCV891334

PCB LAYOUT

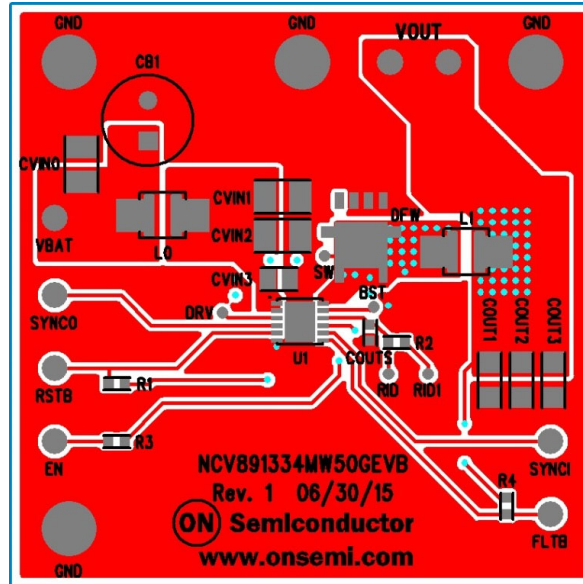


Figure 8. NCV891334MW50GEVB PCB Layout – Top

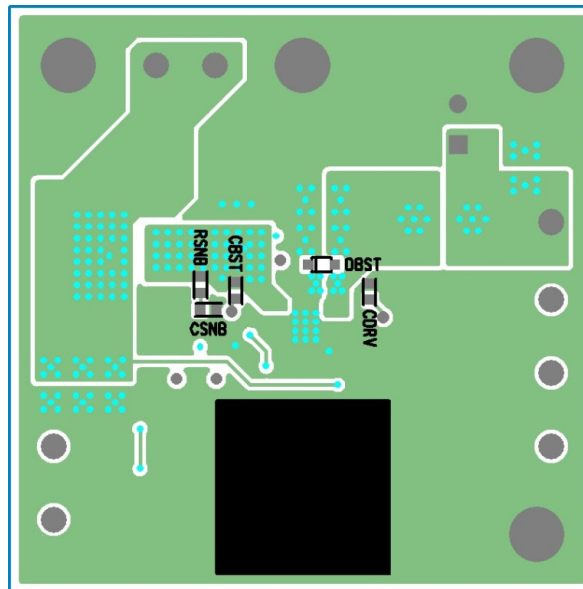


Figure 9. NCV891334MW50GEVB PCB Layout – Bottom

All evaluation board PCB layouts are identical with the exception of TOP Silkscreen and device mounted upon them.

NCV891234, NCV891334

BILL OF MATERIALS

Table 4. BILL OF MATERIALS

Reference Designator(s)	Qty	Description	Value	Tolerance	Foot-print	Manufacturer	Manufacturer's Part Number
CVIN0	1	CAP CER 0.1UF 250V 10% X7R 1210	0.1 μ F	10%	1210	TDK Corporation	CGA6M3X7R2E104K200AA
CVIN1, CVIN2	2	CAP CER 4.7UF 50V 10% X7R 1210	4.7 μ F	10%	1210	Murata Electronics North America	GCM32ER71H475KA55L
CVIN3	1	CAP CER 1.0UF 50V X7R 0805	1.0 μ F	10%	805	Murata Electronics North America	GCM21BR71H105KA03L
CB1	1	CAP ALUM 100UF 63V 20% RADIAL	100 μ F	20%	CAP_RAD_8X11P5	Chemi-Con	ELXZ630ELL101MH15D
CBST, CDRV, COUTS	3	CAP .10UF 16V CERAMIC X7R 0603	0.1 μ F	10%	603	Murata Electronics North America	GCM188R71C104KA37D
COUT1, COUT2, COUT3	3	CAP CER 10UF 10V X7R 1206	10 μ F	10%	1206	Murata Electronics North America	GCM31CR71A106KA64L
CSNB	1	CAP CER 100pF 50V 5% NPO 603	Do Not Populate	5%	603	Murata Electronics North America	GCM1885C1H101JA16D
R1, R3, R4	3	RES 10.0K OHM 1/10W 1% 0603 SMD	10.0 K	1%	603	Vishay/Dale	CRCW060310K0FKEA
R2	1	RES 0.0 OHM 1/10W 0603 SMD	0.0	N/A	603	Vishay/Dale	CRCW06030000Z0EA
RSNB	1	RES 10.0 OHM 1/10W 0603 SMD	Do Not Populate	1%	603	Vishay/Dale	CRCW060310R0FKEA
DFW	1	DIODE SCHOTTKY 4.0A 40V SMB	40 V / 4.0 A	N/A	MBR340M FS	ON Semiconductor	NRVB440MFST1G
DBST	1	DIODE SWITCH 200MA 100V SOD323	100 V / 0.2 A	N/A	SOD_323	ON Semiconductor	BAS16HT1G
L0	1	High Current Shielded Inductor 1.0uH, 8.7A SAT	1.0 μ H	20%	XAL4020-102ME	Coilcraft	XAL4020-102ME
L1	1	High Current Shielded Inductor 2.2uH, 5.6A SAT	2.2 μ H	20%	XAL4020-222ME	Coilcraft	XAL4020-222ME
GND1, GND2, GND3, GND4	4	TERM SOLDER TURRET .219", .109"L	N/A	N/A	TURRET	Mill-Max Manufacturing Corp.	2501-2-00-44-00-00-07-0
EN, FAULTB, RSTB, SYNCI, SYNCO, VBAT, VOUT1, VOUT2	8	PIN INBOARD .042" HOLE 1000/PKG	N/A	N/A	TP	Vector Electronics	K24C/M
BST, DRV, RID1, RID2, SW	5	CIRCUIT PIN PRNTD .020"D .425"L	Do Not Populate	N/A	SMALLTP	Mill-Max Manufacturing Corp.	3128-2-00-15-00-00-08-0
U1 *	1	Automotive Buck Switching Regulator	*	N/A	12PINDF N4X4P65	ON Semiconductor	NCV891x34MWxxR2G

*The Bills of Materials for all four evaluation boards covered in this user's manual are identical with the exception of the mounted device. This can be either NCV891234MW33R2G, NCV891234MW50R2G, NCV891334MW33R2G, or NCV891334MW50R2G.

onsemi, **onsemi**, and other names, marks, and brands are registered and/or common law trademarks of Semiconductor Components Industries, LLC dba "**onsemi**" or its affiliates and/or subsidiaries in the United States and/or other countries. **onsemi** owns the rights to a number of patents, trademarks, copyrights, trade secrets, and other intellectual property. A listing of **onsemi**'s product/patent coverage may be accessed at www.onsemi.com/site/pdf/Patent-Marking.pdf. **onsemi** is an Equal Opportunity/Affirmative Action Employer. This literature is subject to all applicable copyright laws and is not for resale in any manner.

The evaluation board/kit (research and development board/kit) (hereinafter the "board") is not a finished product and is not available for sale to consumers. The board is only intended for research, development, demonstration and evaluation purposes and will only be used in laboratory/development areas by persons with an engineering/technical training and familiar with the risks associated with handling electrical/mechanical components, systems and subsystems. This person assumes full responsibility/liability for proper and safe handling. Any other use, resale or redistribution for any other purpose is strictly prohibited.

THE BOARD IS PROVIDED BY ONSEMI TO YOU "AS IS" AND WITHOUT ANY REPRESENTATIONS OR WARRANTIES WHATSOEVER. WITHOUT LIMITING THE FOREGOING, ONSEMI (AND ITS LICENSORS/SUPPLIERS) HEREBY DISCLAIMS ANY AND ALL REPRESENTATIONS AND WARRANTIES IN RELATION TO THE BOARD, ANY MODIFICATIONS, OR THIS AGREEMENT, WHETHER EXPRESS, IMPLIED, STATUTORY OR OTHERWISE, INCLUDING WITHOUT LIMITATION ANY AND ALL REPRESENTATIONS AND WARRANTIES OF MERCHANTABILITY, FITNESS FOR A PARTICULAR PURPOSE, TITLE, NON-INFRINGEMENT, AND THOSE ARISING FROM A COURSE OF DEALING, TRADE USAGE, TRADE CUSTOM OR TRADE PRACTICE.

onsemi reserves the right to make changes without further notice to any board.

You are responsible for determining whether the board will be suitable for your intended use or application or will achieve your intended results. Prior to using or distributing any systems that have been evaluated, designed or tested using the board, you agree to test and validate your design to confirm the functionality for your application. Any technical, applications or design information or advice, quality characterization, reliability data or other services provided by **onsemi** shall not constitute any representation or warranty by **onsemi**, and no additional obligations or liabilities shall arise from **onsemi** having provided such information or services.

onsemi products including the boards are not designed, intended, or authorized for use in life support systems, or any FDA Class 3 medical devices or medical devices with a similar or equivalent classification in a foreign jurisdiction, or any devices intended for implantation in the human body. You agree to indemnify, defend and hold harmless **onsemi**, its directors, officers, employees, representatives, agents, subsidiaries, affiliates, distributors, and assigns, against any and all liabilities, losses, costs, damages, judgments, and expenses, arising out of any claim, demand, investigation, lawsuit, regulatory action or cause of action arising out of or associated with any unauthorized use, even if such claim alleges that **onsemi** was negligent regarding the design or manufacture of any products and/or the board.

This evaluation board/kit does not fall within the scope of the European Union directives regarding electromagnetic compatibility, restricted substances (RoHS), recycling (WEEE), FCC, CE or UL, and may not meet the technical requirements of these or other related directives.

FCC WARNING – This evaluation board/kit is intended for use for engineering development, demonstration, or evaluation purposes only and is not considered by **onsemi** to be a finished end product fit for general consumer use. It may generate, use, or radiate radio frequency energy and has not been tested for compliance with the limits of computing devices pursuant to part 15 of FCC rules, which are designed to provide reasonable protection against radio frequency interference. Operation of this equipment may cause interference with radio communications, in which case the user shall be responsible, at its expense, to take whatever measures may be required to correct this interference.

onsemi does not convey any license under its patent rights nor the rights of others.

LIMITATIONS OF LIABILITY: **onsemi** shall not be liable for any special, consequential, incidental, indirect or punitive damages, including, but not limited to the costs of requalification, delay, loss of profits or goodwill, arising out of or in connection with the board, even if **onsemi** is advised of the possibility of such damages. In no event shall **onsemi**'s aggregate liability from any obligation arising out of or in connection with the board, under any theory of liability, exceed the purchase price paid for the board, if any.

The board is provided to you subject to the license and other terms per **onsemi**'s standard terms and conditions of sale. For more information and documentation, please visit www.onsemi.com.

ADDITIONAL INFORMATION

TECHNICAL PUBLICATIONS:

Technical Library: www.onsemi.com/design/resources/technical-documentation
onsemi Website: www.onsemi.com

ONLINE SUPPORT: www.onsemi.com/support

For additional information, please contact your local Sales Representative at www.onsemi.com/support/sales