

ON Semiconductor

Is Now

onsemi™

To learn more about onsemi™, please visit our website at
www.onsemi.com

onsemi and **onsemi** and other names, marks, and brands are registered and/or common law trademarks of Semiconductor Components Industries, LLC dba "**onsemi**" or its affiliates and/or subsidiaries in the United States and/or other countries. **onsemi** owns the rights to a number of patents, trademarks, copyrights, trade secrets, and other intellectual property. A listing of **onsemi** product/patent coverage may be accessed at www.onsemi.com/site/pdf/Patent-Marking.pdf. **onsemi** reserves the right to make changes at any time to any products or information herein, without notice. The information herein is provided "as-is" and **onsemi** makes no warranty, representation or guarantee regarding the accuracy of the information, product features, availability, functionality, or suitability of its products for any particular purpose, nor does **onsemi** assume any liability arising out of the application or use of any product or circuit, and specifically disclaims any and all liability, including without limitation special, consequential or incidental damages. Buyer is responsible for its products and applications using **onsemi** products, including compliance with all laws, regulations and safety requirements or standards, regardless of any support or applications information provided by **onsemi**. "Typical" parameters which may be provided in **onsemi** data sheets and/or specifications can and do vary in different applications and actual performance may vary over time. All operating parameters, including "Typicals" must be validated for each customer application by customer's technical experts. **onsemi** does not convey any license under any of its intellectual property rights nor the rights of others. **onsemi** products are not designed, intended, or authorized for use as a critical component in life support systems or any FDA Class 3 medical devices or medical devices with a same or similar classification in a foreign jurisdiction or any devices intended for implantation in the human body. Should Buyer purchase or use **onsemi** products for any such unintended or unauthorized application, Buyer shall indemnify and hold **onsemi** and its officers, employees, subsidiaries, affiliates, and distributors harmless against all claims, costs, damages, and expenses, and reasonable attorney fees arising out of, directly or indirectly, any claim of personal injury or death associated with such unintended or unauthorized use, even if such claim alleges that **onsemi** was negligent regarding the design or manufacture of the part. **onsemi** is an Equal Opportunity/Affirmative Action Employer. This literature is subject to all applicable copyright laws and is not for resale in any manner. Other names and brands may be claimed as the property of others.



12 V or 24 V DC, Constant Current LED Driver

ON Semiconductor®

<http://onsemi.com>

DESIGN NOTE

Table 1. DEVICE DETAILS

Device	Application	Input Voltage	Output Power	Topology	I/O Isolation
CS51411 NCV51411	Constant Current LED Driver	12 V or 24 V DC	Up to 4 W	Buck	None

Table 2. OTHER SPECIFICATIONS

	Output 1	Output 2	Output 3	Output 4
Output Voltage	3.6 V nom	N/A	N/A	N/A
Ripple	20 mV	N/A	N/A	N/A
Nominal Current	700 mA	N/A	N/A	N/A
Max Current	1 A	N/A	N/A	N/A
Min Current	N/A	N/A	N/A	N/A

PFC (Yes/No)	No
Cooling Method/Supply Orientation	Convection

Circuit Description

ON Semiconductor's latest monolithic NCV51411 (CS51411) converter is to be used in a buck topology optimized to drive a single LED at a constant current between 350 mA to 1 A.

A high side, low drop, current sensing scheme has been implemented, targeted for automotive and other high efficiency applications.

DCR Inductor current sensing is used to generate the control ramp required for the V2 controller.

Key Features

- Constant Current Output with Voltage Clamp
- Low Drop High Side Current Sensing
- High Frequency (260 kHz/520 kHz*) Operation to Enable Cost Effective Magnetic and Capacitive (e.g. MLCC) Filter Components
- Minimal Ripple Current through LED
- High Side Sensing Allows LED Cathode to be Directly Connected to System Ground

*CS51413 Supports 520 kHz Operation

Design Notes

This design note targets a constant current (350 mA to 1 A) driver suitable for driving a single LED (1 W or 3 W) from a nominal 12 V or 24 V dc source. The output voltage range assumes a single White/Blue/Green LED with a forward voltage of $3.6 \pm 35\%$. The converters used in the design are from ON Semiconductor's CS5141x family; the CS51411 in a SOIC-8 and is offered in two ambient temperature ranges (0–70°C or –40–85°C) while the NCV51411 is specifically intended for automotive applications and is specified for junction temperatures up to 125°C. Figure 1 shows the pin out of the SOIC-8. Refer to the data sheet at the ON Semiconductor web site for the pin out for other package options such as the NCV51411 DFN package.

DN06018/D

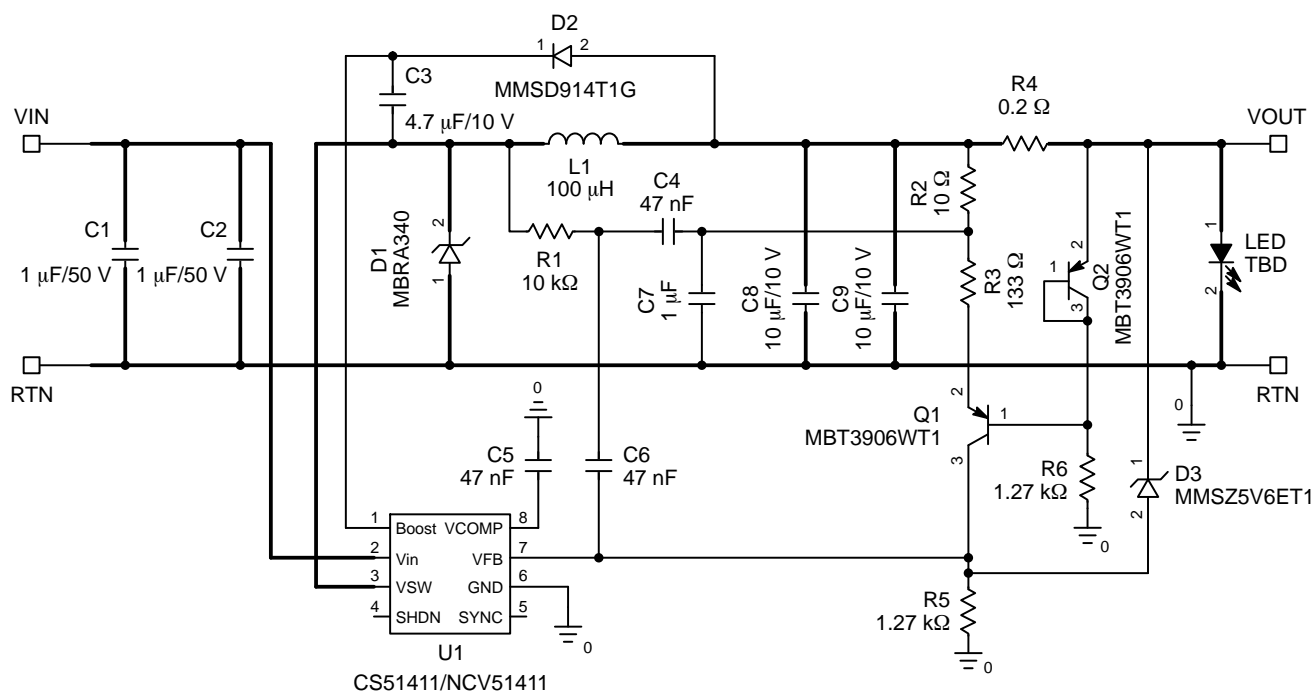


Figure 1. Schematic

Theory of Operation

For low ripple current in the inductor and through the LED, this design is based around Continuous Conduction Mode (CCM) operating mode. The switch within the controller turns on for time $D \cdot T_S$ (D duty cycle, T_S switching period) charging inductor $L1$ through the voltage differential ($V_{IN} - V_{OUT}$). When the switch is turned off by the feedback signal, diode $D1$ conducts and delivers the energy stored in the inductor to the output V_{OUT} .

For the inductor flux (volt microsecond) to remain in equilibrium each switching cycle, $(V_{IN} - V_{OUT}) \cdot D \cdot T_S$ must equal $V_{OUT} \cdot (1 - D) \cdot T_S$ neglecting circuit losses. Hence the voltage gain of buck is given by the expression $V_{OUT} = D \cdot V_{IN}$.

Power Components

The NCV/CS51411 has a switching frequency of 260 kHz equivalent to a switching period $T_S = 3.85 \mu s$. For a nominal 12 V input to 3.6 V output, the duty cycle $D = 3.6/12 = 0.3$.

Output Inductor Selection

Ripple current in the inductor is obtained from the expression $\delta I(L1) = V_{IN} \cdot T_S \cdot D \cdot (1 - D) / L1$.

A value for $L1$ of 47 μH will maintain $\pm 15\%$ ripple current in the 700 mA application (3 W LED) discussed below.

Freewheel Diode D1

The MBRA340 Schottky diode has a forward drop of 300 mV at a forward current of 0.7 A. Power loss is $(1 - D) \cdot I(L1) \cdot V_{D1}$. This equates to a power loss of 150 mW in this application.

Boost Diode D2

Diode $D2$ and MLCC $C3$, across the inductor $L1$, form a simple boost circuit to supply base current to drive the high side BJT in the controller. $C3$ is charged to V_{OUT} during each switching period $(1 - D) \cdot T_S$, when the freewheeling diode $D1$ is conducting.

Input/Output Capacitors

The input/output capacitors used for the application are MLCC capacitors in a 1206 or a 0805 SMT package. Low value MLCC capacitors (10 μF) have very small esr (2 m Ω) and esl (100 nH) values. When combined in parallel combinations they form the “perfect” capacitor. Consequently the ripple voltage across them is due only to charging and discharging of the capacitor by the inductor ripple current.

The ripple voltage across the input capacitor $= 0.5 \cdot D \cdot T_S \cdot \delta I(L1) / C_{IN}$. For $C_{IN} = 2 \cdot 1 \mu F$, input voltage ripple = 60 mV p/p.

The ripple developed across the output capacitors $= 0.5 \cdot (1 - D) \cdot T_S \cdot \delta I(L1) / C_{OUT}$. For $C_{OUT} = 2 \cdot 10 \mu F$, output ripple = 15 mV p/p.

Note the actual value of a MLCC decreases with dc voltage applied. Therefore it is recommended to have a voltage stress de-rating factor of 50% on each component. Hence a 50 V rating is suggested for the 24 V application and a 6.3 V is recommended across the 3.6 V output. Depending on the maximum V_f of the LED, this output capacitor rating should be increased to 10 V.

Current Sensing Circuitry

Driving a single LED will produce a voltage V_{OUT} at the converter's output of approximately 3.6 volts. This voltage will vary with device and temperature effects. If a sensing scheme using a 0.6 V (BJT base emitter junction) or higher voltage reference is used, the converter's conversion efficiency can be seriously degraded. For example if a sense resistor is placed across a V_{be} junction for current sensing, the efficiency will be degraded by 17%. Also in automotive applications, high side current sensing is preferred because in an automobile the chassis is used for ground returns.

In this design, low drop, cost effective, high side current sensing is achieved by the transistor pair of Q1 and Q2 and resistors R2, R3, R4, R5 and R6. The feedback pin under normal operation is maintained at 1.27 volts, equal to the controller U1's internal reference. Consequently a constant current of 1.27 V/1.27 k or 1 mA flows through R2, R3, Q1 and R5. The voltage across R2 + R3 = $(R2 + R3) \cdot 1 \text{ mA}$ or 140 mV. The output LED current is sensed by sense resistor R4, which in turn develops a voltage $I_{LED} \cdot R4$ across it. The current regulation point is determined when the equation $I_{LED} = (1.27/R5) \cdot \{(R2 + R4)/R5\}$ is satisfied. For the values chosen $I_{LED} = 1 \text{ mA} \cdot (140 / 0.2)$ or 700 mA. Above 700 mA, the current mirror, consisting of Q2 and R6 will cause additional current to flow in Q1. The increase in voltage at the feedback pin V_{FB} will cause the duty cycle to reduce to limit the current at the designed set point. It is worth noting that even though the ripple current in the inductor is 200 mA, this is diverted into the output capacitor bank. The ripple current in the LED itself is an order of magnitude less determined by the ratio of the LED's dynamic impedance to the output capacitor's impedance at the 260 kHz switching frequency.

The LED current can be varied from 350 mA to 1 A by scaling the value of either R3 or R4.

Control Circuitry

The error amplifier in the V2 controller U1 is a trans-conductance amplifier having several mega ohms of output impedance. Adding a small capacitor C5 to ground at its output V_{COMP} will provide a low frequency pole at 20 Hz. This pole will filter the feedback signal providing a dc error signal to one input of the PWM inside the controller. The V2 control architecture requires a control ramp to be included with the dc feedback information on the feedback pin V_{FB} . This signal is passed directly to the other input of the PWM. When the dc error signal and dc feedback plus ramp intersect, the switch cycle is terminated, thereby allowing modulation of the duty cycle D to occur.

In this application, this control ramp is generated from indirectly sensing the current flowing in the inductor's DCR winding resistance. When an integrating network consisting of R1, C4 is placed across the output inductor L1, the voltage developed across the integrating capacitor C4 is given by the equation below.

$$\delta V (C4) = \frac{V_{IN} \cdot T_S \cdot D \cdot (1 - D)}{R1 \cdot C4} \quad (\text{eq. 1})$$

Assuming the inductor winding resistance is dcr, the voltage across this dcr resistance δV (dcr) is given by the following equation.

$$\delta V (\text{dcr}) = \frac{V_{IN} \cdot T_S \cdot D \cdot (1 - D) \cdot \text{dcr}}{L1} \quad (\text{eq. 2})$$


It is apparent the two expressions are equal if the integrator's time constant $R1 \cdot C4$ is matched to the inductor's time constant L / dcr . At this point in the design, we can select the output inductor L1 to be a TDK SLF10145T-470M1R4. This is a 47 μH inductor with a dcr of 0.1 Ω and a saturation current of 1.4 A. Its time constant is 470 μs . If we select R1 as 10 k Ω and C4 equal to 47 nF we match the 470 μs time constant. Our control ramp is the inductor current. Its amplitude is calculated from the δV (C4) equation as 21 mV. Alternatively a Coilcraft inductor DO3316P-473 having a larger 0.14 Ω dcr could be selected. In order not to degrade this ramp with switching ripple from the output, the filter network R2, C6 is recommended. Finally the capacitor C5 is used to ac couple the current control ramp to the feedback pin V_{FB} .

In the event of an open circuit output condition, such as the case if the output LED failed open, zener diode D3 conducts to limit the output voltage to $V_z + 1.27 \text{ V}$. In the application, the voltage clamp is designed to operate at 6.9 V.

DN06018/D

Table 3. BILL OF MATERIALS

Ref. Design	Description	Package	Manufacturer	Manufacturer Part Number
U1	Buck Controller	SO-8	ON Semiconductor	CS51411
	Buck Controller	18 Lead DFN	ON Semiconductor	NCV51411
D1	Schottky (350 mA)	SOD123	ON Semiconductor	MBR140SFT1G
	Schottky (700 mA)	SMA	ON Semiconductor	MBRA340
D2	Diode, 0.2 A, 100 V	SOD123	ON Semiconductor	MMSD914T1G
D3	Zener, 5.6 V	SOD123	ON Semiconductor	MMSZ5V6ET1
L1	Output Inductor, 47 μ H, 0.14 Ω , 1.6 A Isat		Coilcraft	DO3316P-473
	Output Inductor, 47 μ H, 0.10 Ω , 1.4 A Isat		TDK	SLF10145T-470M1R4
Q1, Q2	-0.2 A, -40 V, Dual PNP Array	SOT363	ON Semiconductor	MBT3906WT1
C1, C2	1 μ F 50 V	1206 X7R	Murata	GRM31MR71H105K
C3	4.7 μ F 10 V	0805 MLCC	TDK	C2012X%R1A475M
C4, C5, C6	47 nF	0603 MLCC	Vishay	VJ0603Y473KXXA
C7	1 μ F, 16 V	0603 MLCC	TDK	C1608X5R1C105M
C8, C9	10 μ F, 6.3 V	0805 MLCC	Taiyo Yuden	JMK316BJ106ML-T
R1	10 k Ω	0603	Vishay	CRCW06031002F
R2	10 Ω	0603	Vishay	CRCW060310R0F
R3	133 Ω	0603	Vishay	CRCW05031330F
R4	0.2 Ω	1206	TT Electronics	IRC LRC-LR1206-01-R200-F
R5, R6	1.27 k Ω	0603	Vishay	CRCW06031271F

ON Semiconductor and the  are registered trademarks of Semiconductor Components Industries, LLC (SCILLC) or its subsidiaries in the United States and/or other countries. SCILLC owns the rights to a number of patents, trademarks, copyrights, trade secrets, and other intellectual property. A listing of SCILLC's product/patent coverage may be accessed at www.onsemi.com/site/pdf/Patent-Marking.pdf. SCILLC reserves the right to make changes without further notice to any products herein. SCILLC makes no warranty, representation or guarantee regarding the suitability of its products for any particular purpose, nor does SCILLC assume any liability arising out of the application or use of any product or circuit, and specifically disclaims any and all liability, including without limitation special, consequential or incidental damages. "Typical" parameters which may be provided in SCILLC data sheets and/or specifications can and do vary in different applications and actual performance may vary over time. All operating parameters, including "Typicals" must be validated for each customer application by customer's technical experts. SCILLC does not convey any license under its patent rights nor the rights of others. SCILLC products are not designed, intended, or authorized for use as components in systems intended for surgical implant into the body, or other applications intended to support or sustain life, or for any other application in which the failure of the SCILLC product could create a situation where personal injury or death may occur. Should Buyer purchase or use SCILLC products for any such unintended or unauthorized application, Buyer shall indemnify and hold SCILLC and its officers, employees, subsidiaries, affiliates, and distributors harmless against all claims, costs, damages, and expenses, and reasonable attorney fees arising out of, directly or indirectly, any claim of personal injury or death associated with such unintended or unauthorized use, even if such claim alleges that SCILLC was negligent regarding the design or manufacture of the part. SCILLC is an Equal Opportunity/Affirmative Action Employer. This literature is subject to all applicable copyright laws and is not for resale in any manner.

PUBLICATION ORDERING INFORMATION

LITERATURE FULFILLMENT:

Literature Distribution Center for ON Semiconductor
P.O. Box 5163, Denver, Colorado 80217 USA
Phone: 303-675-2175 or 800-344-3860 Toll Free USA/Canada
Fax: 303-675-2176 or 800-344-3867 Toll Free USA/Canada
Email: orderlit@onsemi.com

N. American Technical Support: 800-282-9855 Toll Free
USA/Canada
Europe, Middle East and Africa Technical Support:
Phone: 421 33 790 2910
Japan Customer Focus Center
Phone: 81-3-5817-1050

ON Semiconductor Website: www.onsemi.com

Order Literature: <http://www.onsemi.com/orderlit>

For additional information, please contact your local Sales Representative