

ON Semiconductor

Is Now



To learn more about onsemi™, please visit our website at
www.onsemi.com

onsemi and onsemi. and other names, marks, and brands are registered and/or common law trademarks of Semiconductor Components Industries, LLC dba "onsemi" or its affiliates and/or subsidiaries in the United States and/or other countries. onsemi owns the rights to a number of patents, trademarks, copyrights, trade secrets, and other intellectual property. A listing of onsemi product/patent coverage may be accessed at www.onsemi.com/site/pdf/Patent-Marking.pdf. onsemi reserves the right to make changes at any time to any products or information herein, without notice. The information herein is provided "as-is" and onsemi makes no warranty, representation or guarantee regarding the accuracy of the information, product features, availability, functionality, or suitability of its products for any particular purpose, nor does onsemi assume any liability arising out of the application or use of any product or circuit, and specifically disclaims any and all liability, including without limitation special, consequential or incidental damages. Buyer is responsible for its products and applications using onsemi products, including compliance with all laws, regulations and safety requirements or standards, regardless of any support or applications information provided by onsemi. "Typical" parameters which may be provided in onsemi data sheets and/or specifications can and do vary in different applications and actual performance may vary over time. All operating parameters, including "Typicals" must be validated for each customer application by customer's technical experts. onsemi does not convey any license under any of its intellectual property rights nor the rights of others. onsemi products are not designed, intended, or authorized for use as a critical component in life support systems or any FDA Class 3 medical devices or medical devices with a same or similar classification in a foreign jurisdiction or any devices intended for implantation in the human body. Should Buyer purchase or use onsemi products for any such unintended or unauthorized application, Buyer shall indemnify and hold onsemi and its officers, employees, subsidiaries, affiliates, and distributors harmless against all claims, costs, damages, and expenses, and reasonable attorney fees arising out of, directly or indirectly, any claim of personal injury or death associated with such unintended or unauthorized use, even if such claim alleges that onsemi was negligent regarding the design or manufacture of the part. onsemi is an Equal Opportunity/Affirmative Action Employer. This literature is subject to all applicable copyright laws and is not for resale in any manner. Other names and brands may be claimed as the property of others.



ON Semiconductor

Design Note – DN05111/D

AS0260 Image Sensor with Power & Clocking Reference Design

Device	Application	Output Voltage	Output Current	Dropout Voltage	Package
NCP163	Image Sensor	2.8 V & 1.8 V	250 mA	80 mV	WLCSP

Other Specifications

- Fully integrated image sensor module with power and clocking solution
- Supports a single wide input voltage
- Image sensor performance impervious to system design
- 9.5mmx9.5mm image sensor section

Introduction

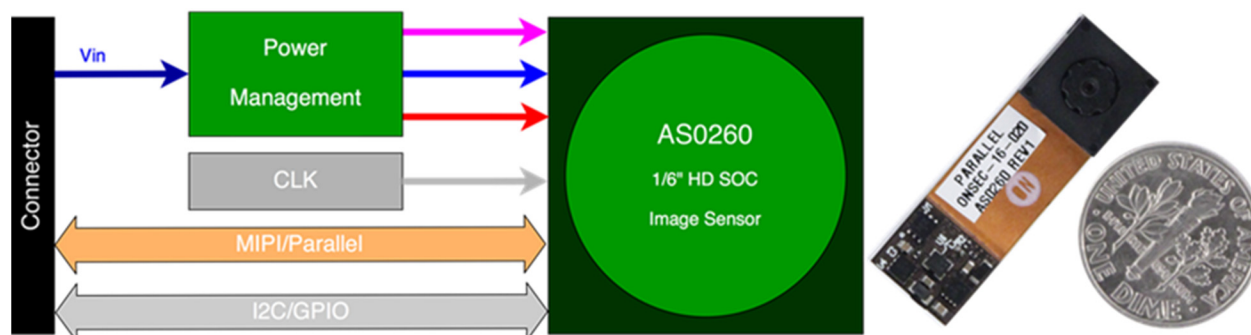
Complementary metal-oxide semiconductor (CMOS) imaging sensors are the most commonly used type of image sensors actually. One of the great advantages of CMOS sensors over charged coupled devices (CCDs) is the very high level of product integration, such as the possibility to include the timing logic, image digitalization and processing plus capture control on a miniature single chip. This reduces system power, cost, and size without much compromise in performance.

On the other side, CMOS imaging sensors are sensitive to noise, which can be electromagnetic interference (EMI), substrate noise coupling, thermal noise and power supply ripple. First three effects can be significantly reduced by proper circuit and PCB design. We will focus on power supply ripple only in this design note.

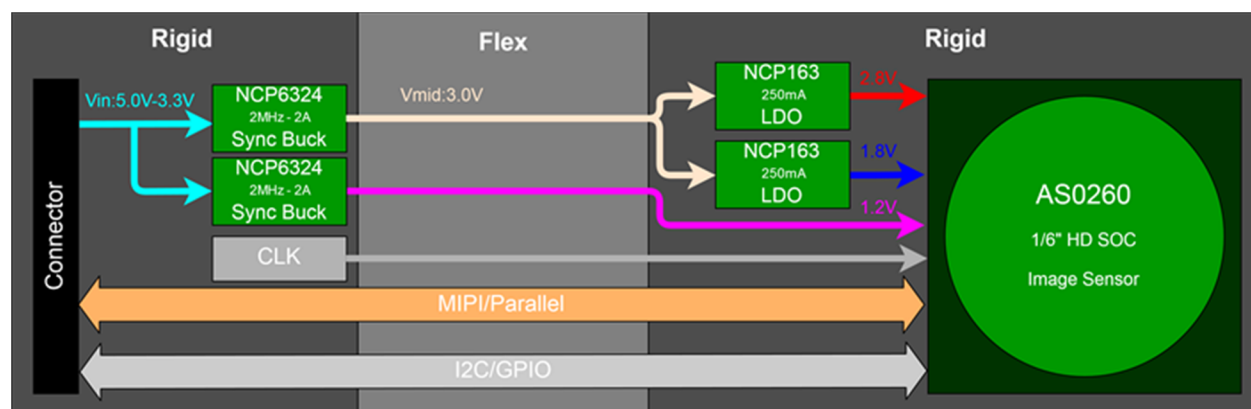
Voltage ripple present on digital supply rails usually does not cause any significant impact to image quality, while ripple is inside required and specified limits. On the other side, ripple present on analog supply rail is directly proportional to image quality and can cause several types of image distortion, including image noise.

In this design note we want to focus on AS0260 image sensor, which use two voltage supply rails: 2.8V for analog circuits and 1.8V for digital circuits. There is also another voltage level 1.2V used for communication interface (serial or parallel).

Circuit Description

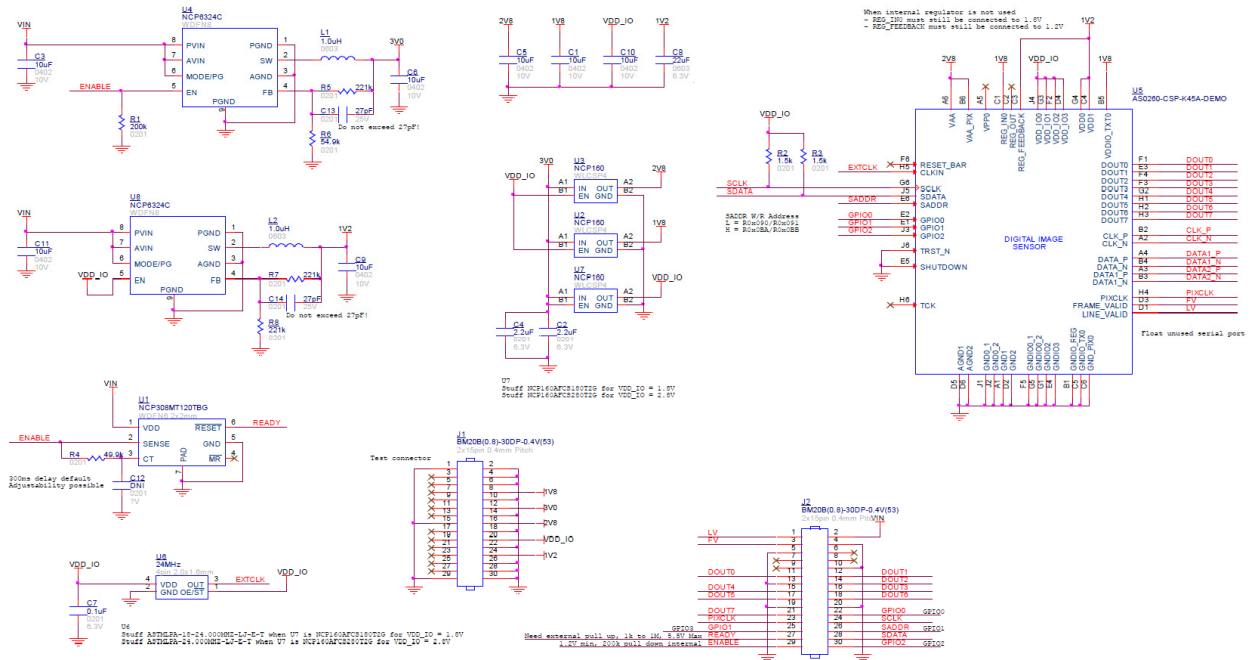


High level block diagram of AS0260 demo board with parallel interface, real size comparison.



Detailed power supply block diagram, 2x NCP6324 DC-DC and 2x NCP163 LDO used.

Schematic

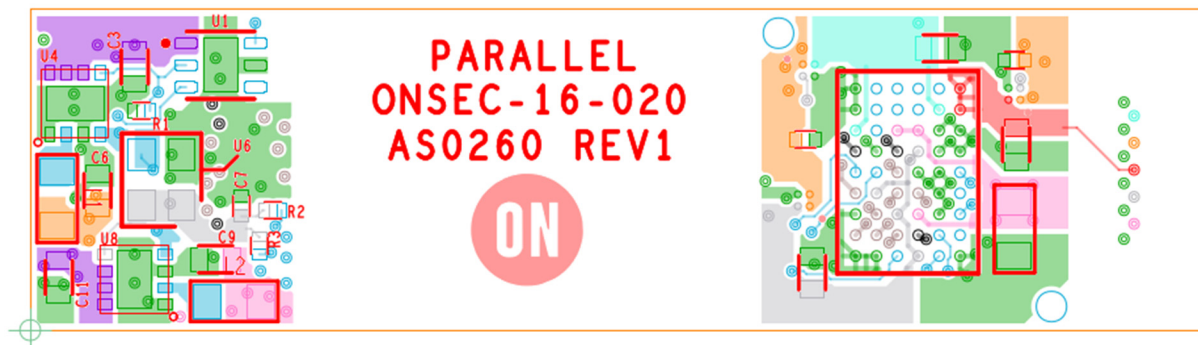


Note: NCP160 and NCP163 are pin to pin compatible.
NCP163 is an upgrade of NCP160 with improved PSRR and transient response.

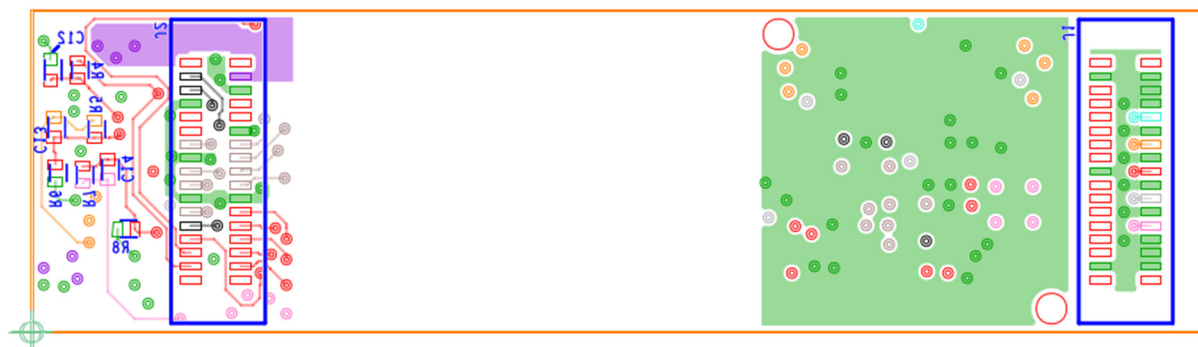
PCB Details

(Shown with and without lens)



PCB Details (continued)

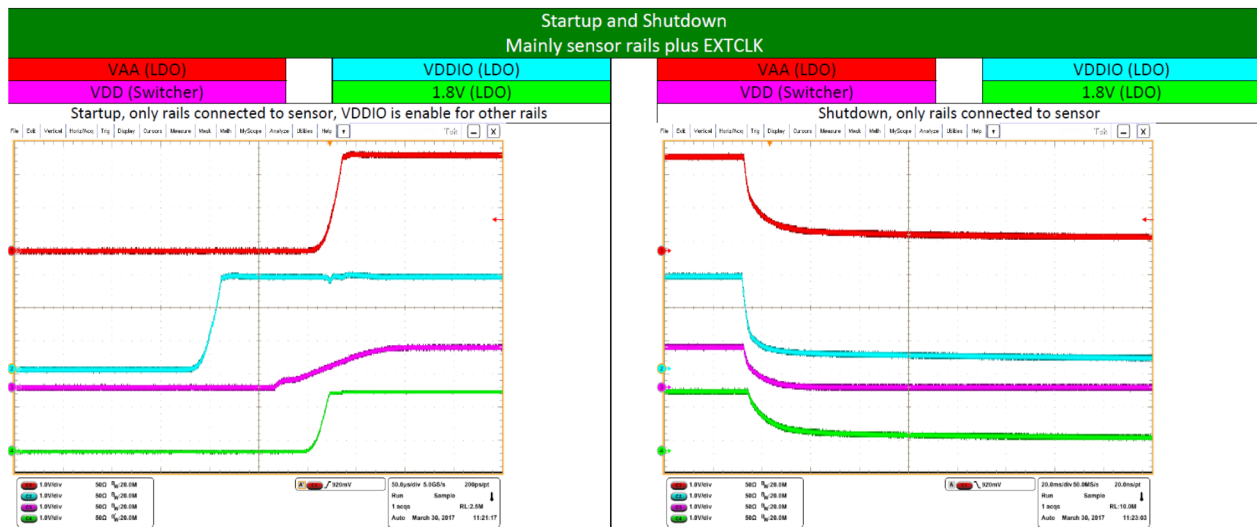
Top side of demo board with main components layout (not in scale).



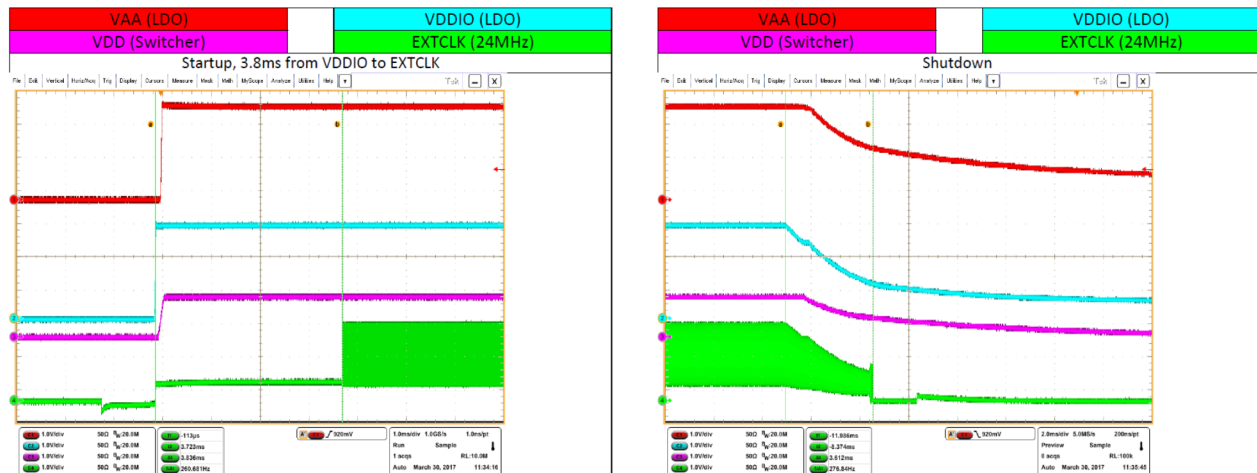
Bottom side of demo board with main components layout (not in scale).

This demo board was used to measure all following parameters related to AS0260 sensor.

Performance Information

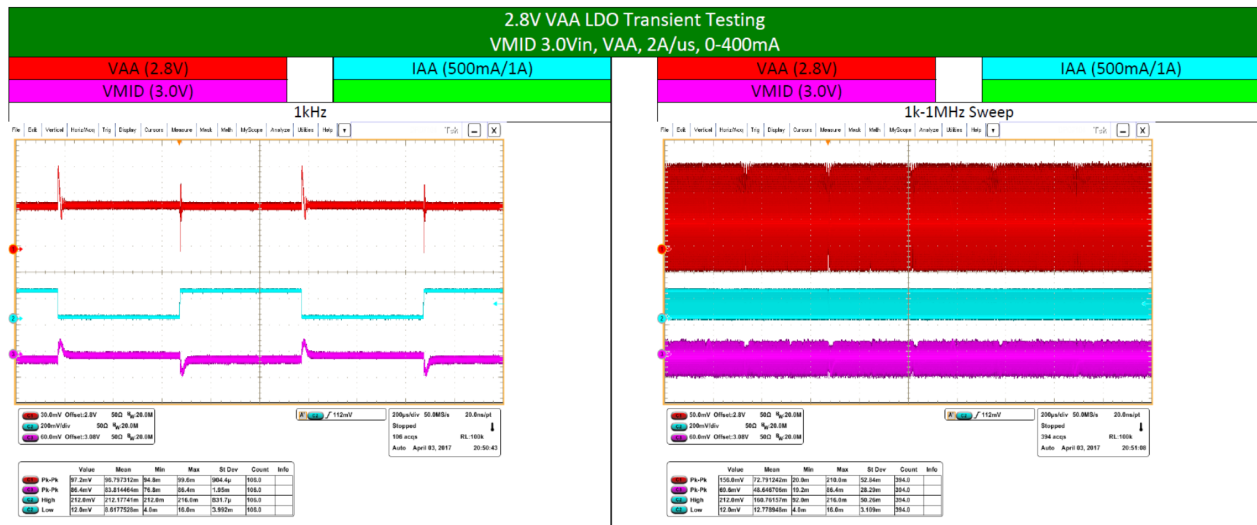


Detail of proper timing for all voltage rails, where red line shows VAA analog voltage 2.8V (the most important voltage for picture quality).

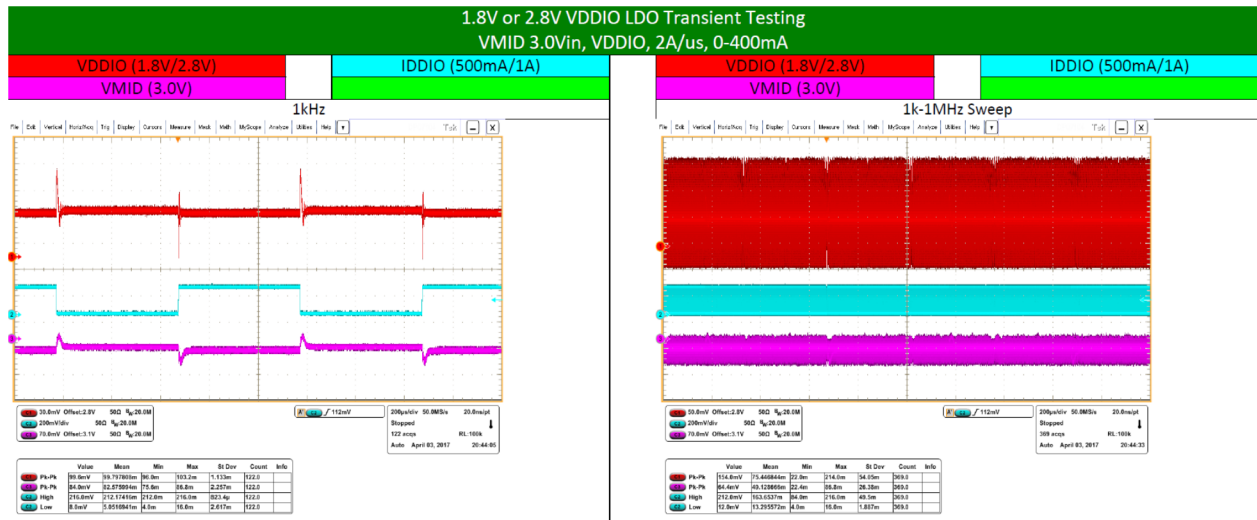


Detail of time delay between VDDIO digital voltage and AS0260 sensor clock signal for both startup and shutdown event.

Performance Information (continued)

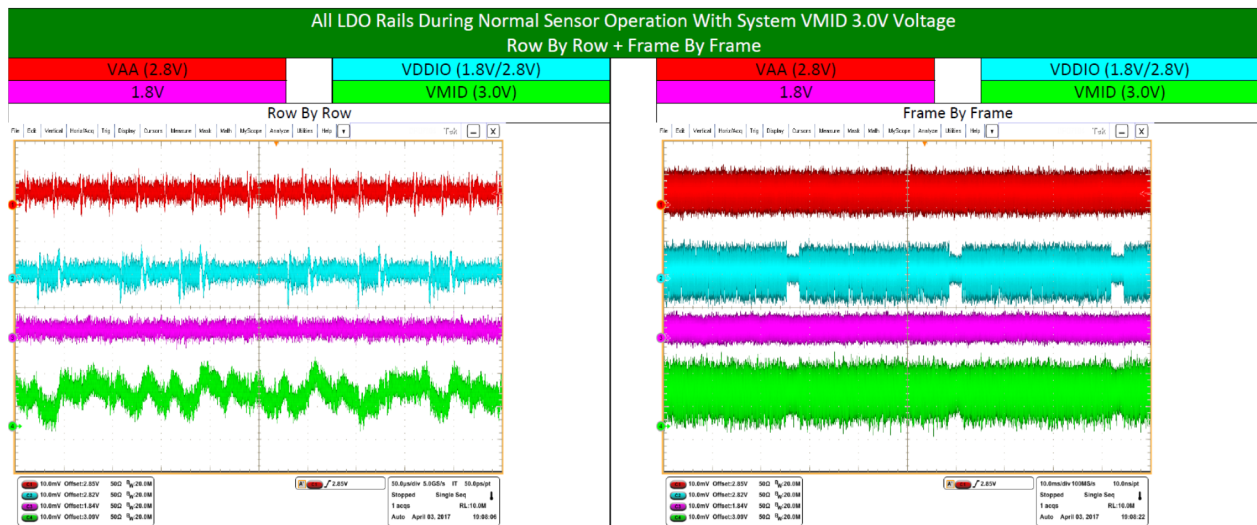


Transient testing waveform for VAA analog voltage 2.8V (NCP163 used), when supplied from 3.0V VMID voltage (see power block diagram).

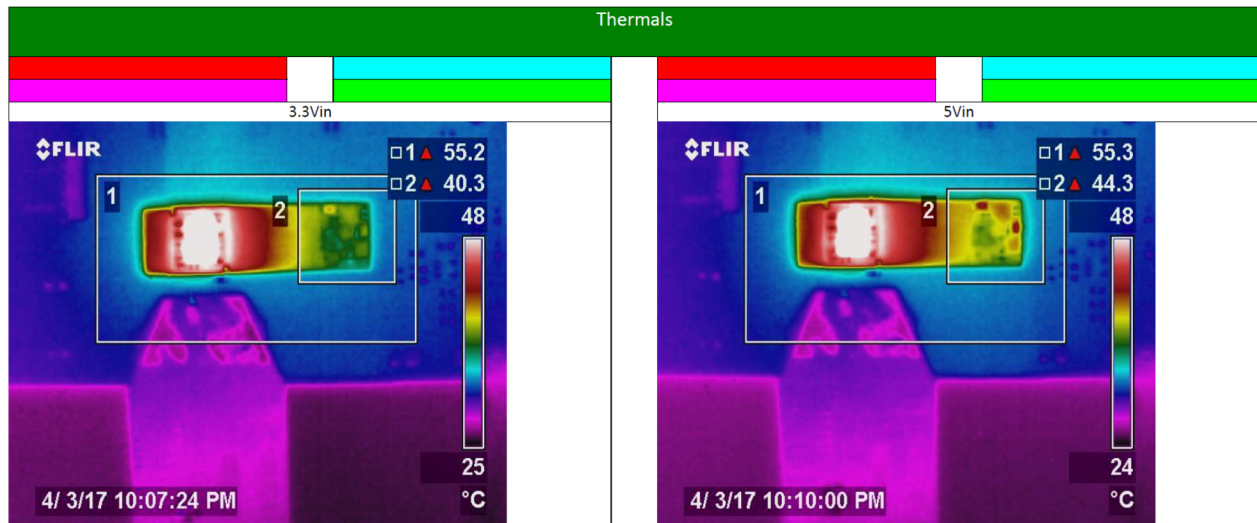


Transient testing waveform for VDDIO digital voltage 1.8V / 2.8V (NCP163 used), when supplied from 3.0V VMID voltage (see power block diagram).

Performance Information (continued)



Waveforms for all voltage rails during normal operation of AS0260 image sensor with VMID voltage set to 3.0V. Please note low VAA analog voltage ripple, which is crucial for image quality.



Thermal pictures of whole demo board for both standard input voltages 3.3V and 5.0V. Please note that input voltage 3.3V is better from efficiency and power dissipation point of view.

Conclusion

In this design note we presented how to create high-performance and very efficient power supply for AS0260 CMOS image sensor. Thanks to new NCP163 LDO regulator used for analog voltage rail it is possible to achieve superb image quality with minimum required area on PCB. This solution is not only cost effective, but also much better performing than any DC-DC regulator usually used on this position.

Disclaimer: ON Semiconductor is providing this design note “AS IS” and does not assume any liability arising from its use; nor does ON Semiconductor convey any license to its or any third party’s intellectual property rights. This document is provided only to assist customers in evaluation of the referenced circuit implementation and the recipient assumes all liability and risk associated with its use, including, but not limited to, compliance with all regulatory standards. ON Semiconductor may change any of its products at any time, without notice.