

# DAB L-band Amplifier Using the MCH4015

---



**ON Semiconductor®**

<http://onsemi.com>

## Application Note

### Overview

This application note explains about ON Semiconductor's MCH4015 which is used as a Low Noise Amplifier (LNA) for DAB (Digital Audio Broadcast).

The MCH4015 is a silicon bipolar transistor best suited for high-frequency applications which is assembled in the 4-pin surface mount package.

For information about the performance, please refer to the datasheet of this product.

Since the evaluation board is adjusted to achieve optimal performance in L-band (1452 MHz to 1492 MHz), the product can provide 15.5dB gain and 1.54dB noise figure.

A standard material FR4 is used for the printed circuit board (PCB).

Please note that the losses of the PCB and the SMA connector are not excluded from the noise figure.

## DAB L-band Amplifier Using the MCH4015

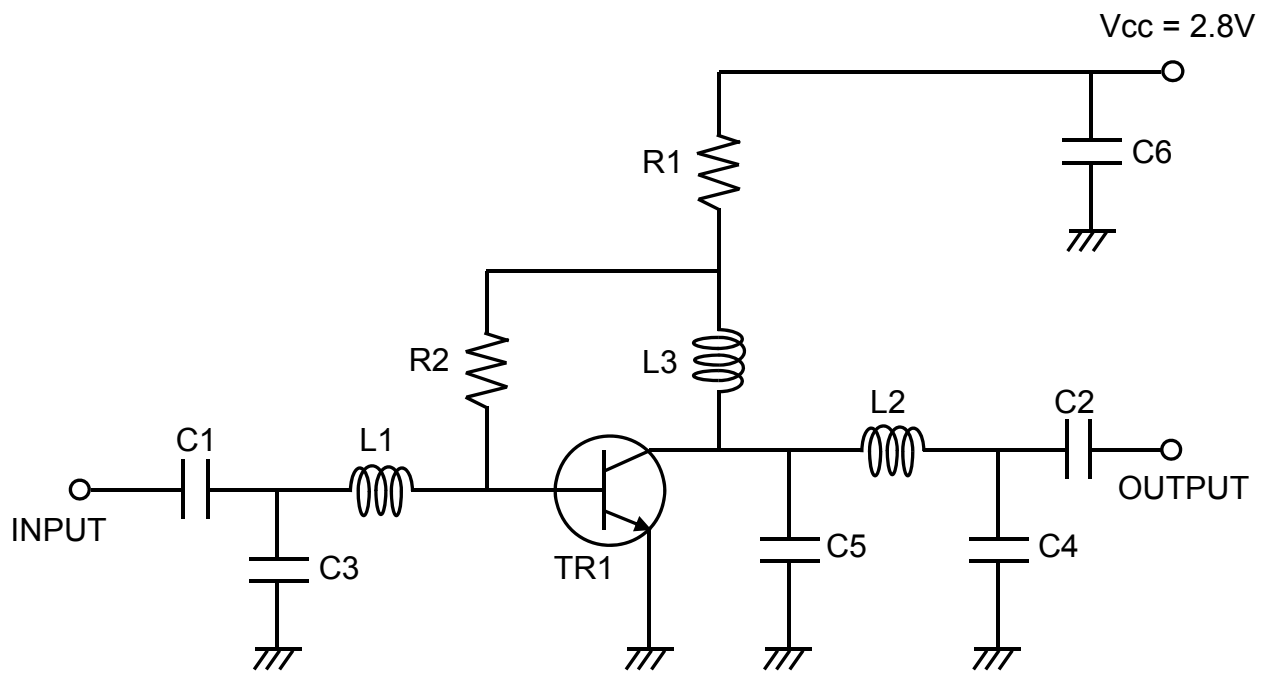
### ■ Summary of Data

Ta = 25 °C, Input Power = -40 dBm

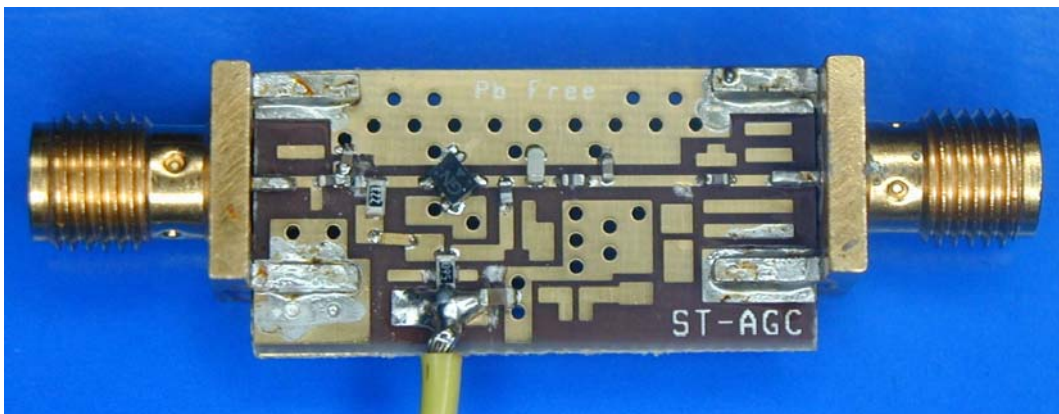
Parameter	Symbol	Condition	Result			Unit
DC Voltage	Vcc		2.6	2.8	3.0	V
DC Current	Icc		8.5	9.4	10.3	mA
Gain	Gp1	f = 1452 MHz	15.5	15.6	15.8	dB
	Gp2	f = 1472 MHz	15.4	15.5	15.7	dB
	Gp3	f = 1492 MHz	15.3	15.4	15.5	dB
Noise Figure	NF1	f = 1452 MHz	-	1.52	-	dB
	NF2	f = 1472 MHz	-	1.54	-	dB
	NF3	f = 1492 MHz	-	1.62	-	dB
Input Return Loss	RLin1	f = 1452 MHz	11.7	12.1	12.6	dB
	RLin2	f = 1472 MHz	11.6	11.9	12.2	dB
	RLin3	f = 1492 MHz	11.4	11.5	11.6	dB
Output Return Loss	RLout1	f = 1452 MHz	11.0	11.3	11.7	dB
	RLout2	f = 1472 MHz	12.0	12.5	12.9	dB
	RLout3	f = 1492 MHz	12.9	13.5	13.9	dB
Isolation	ISL1	f = 1452 MHz	19.9	20.5	20.7	dB
	ISL2	f = 1472 MHz	19.9	20.3	20.6	dB
	ISL3	f = 1492 MHz	19.9	20.3	20.6	dB
Gain 1dB Compression Input Power	Pin1dB	f = 1472 MHz	-	-10	-	dBm
Input 3rd Order Intercept Point	IIP3	f1 = 1472 MHz f2 = 1473 MHz Pin = -30 dBm	-	0	-	dBm

# DAB L-band Amplifier Using the MCH4015

## ■Circuit Design



## ■Evaluation Board



## DAB L-band Amplifier Using the MCH4015

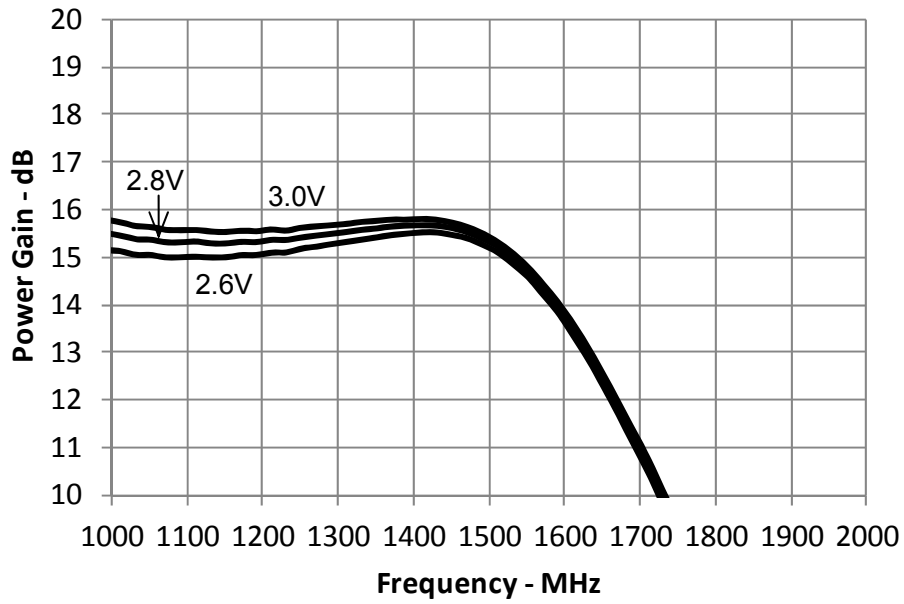
---

### ■Bill of Materials

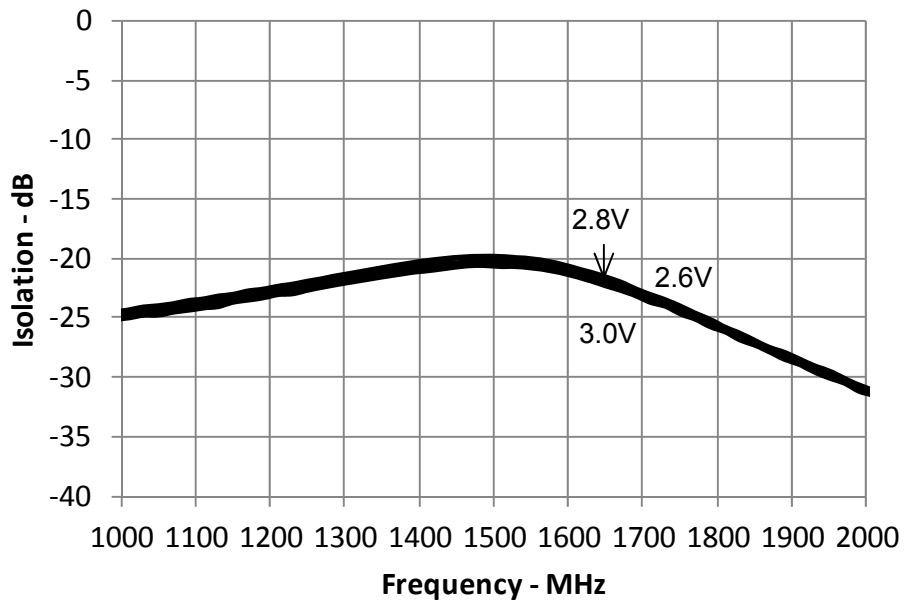
Item	Symbol	Value	Manufacturer	Size
Bip-Tr	TR1	MCH4015	ON Semiconductor	SC82
Capacitor	C1,C2	100 pF	TAIYOYUDEN	1005
	C3,C4	3 pF	TAIYOYUDEN	1005
	C5	1.6 pF	Murata GQM1884C2A1R6CB01	1608
	C6	0.1 uF	TAIYOYUDEN	1608
Resistor	R1	56 $\Omega$	Various	1608
	R2	22 k $\Omega$	Various	1608
Inductor	L1	1.8 nH	TOKO LL1005-FHL1N8S	1005
	L2	3.9 nH	TOKO LL1005-FHL3N9S	1005
	L3	33 nH	TOKO LL1005-FHL33NJ	1005
Material	-	FR4	-	24.5x12.7mm

# DAB L-band Amplifier Using the MCH4015

## ■ Power Gain

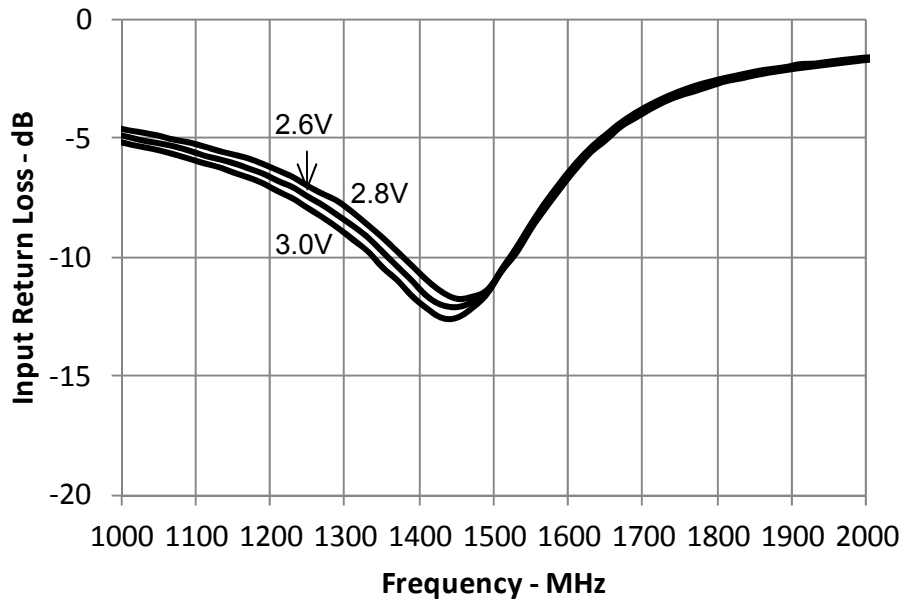


## ■ Isolation

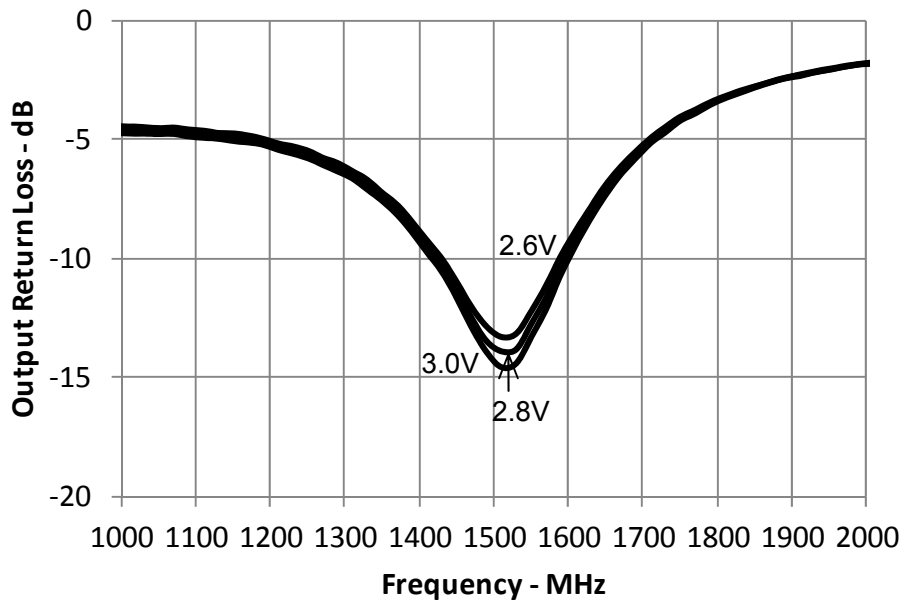


# DAB L-band Amplifier Using the MCH4015

## ■ Input Return Loss

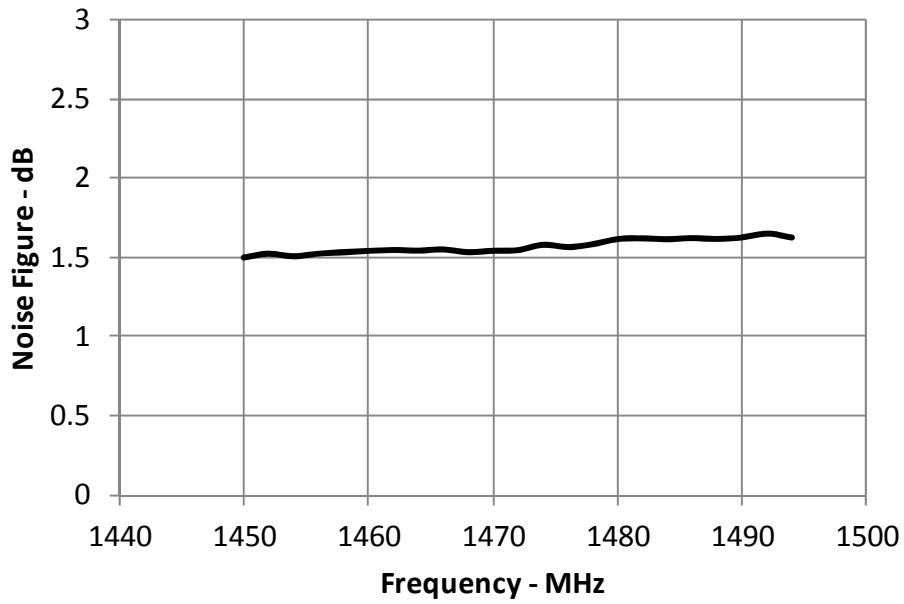


## ■ Output Return Loss

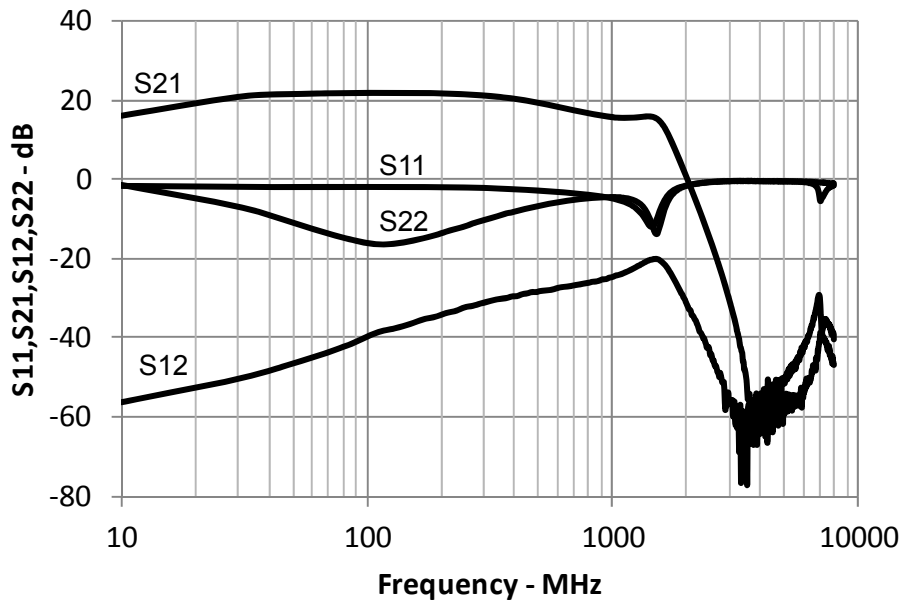


# DAB L-band Amplifier Using the MCH4015

## ■ Noise Figure



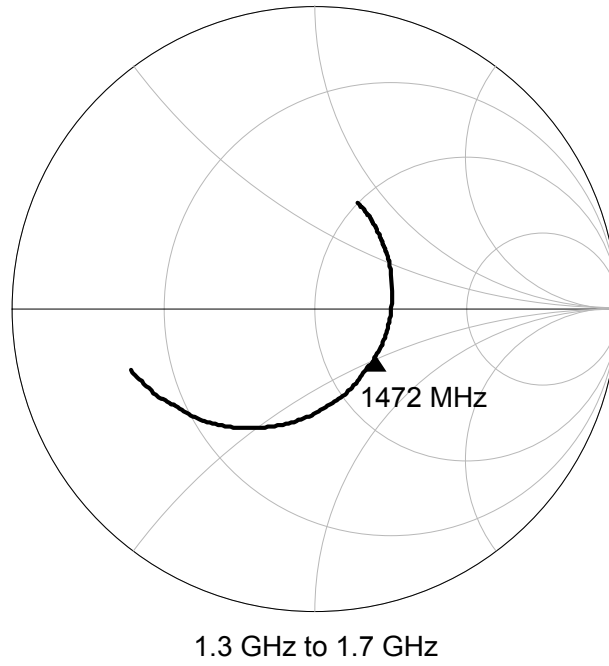
## ■ S11, S21, S12, S22 Wide Span



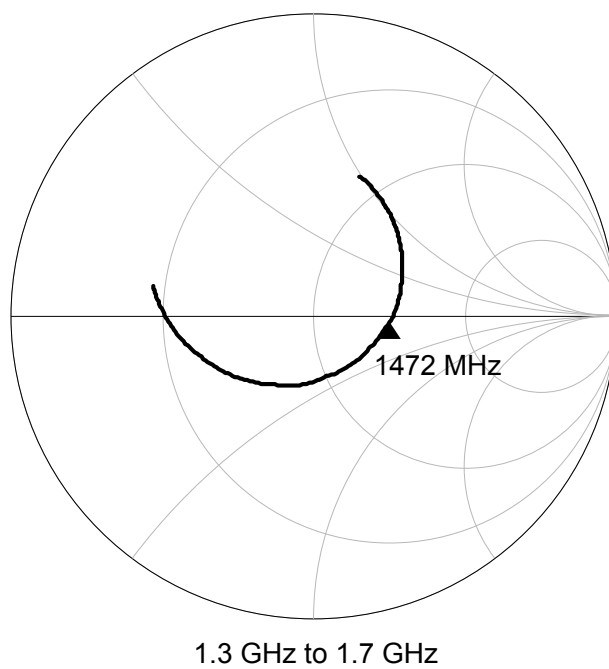
# DAB L-band Amplifier Using the MCH4015

---

## ■ Smith Chart Input Return Loss



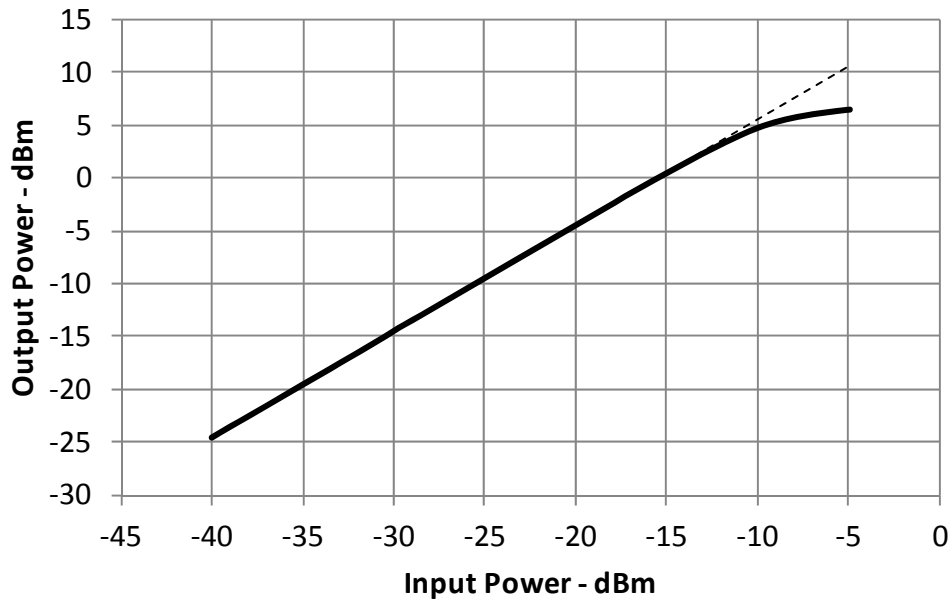
## ■ Smith Chart Output Return Loss





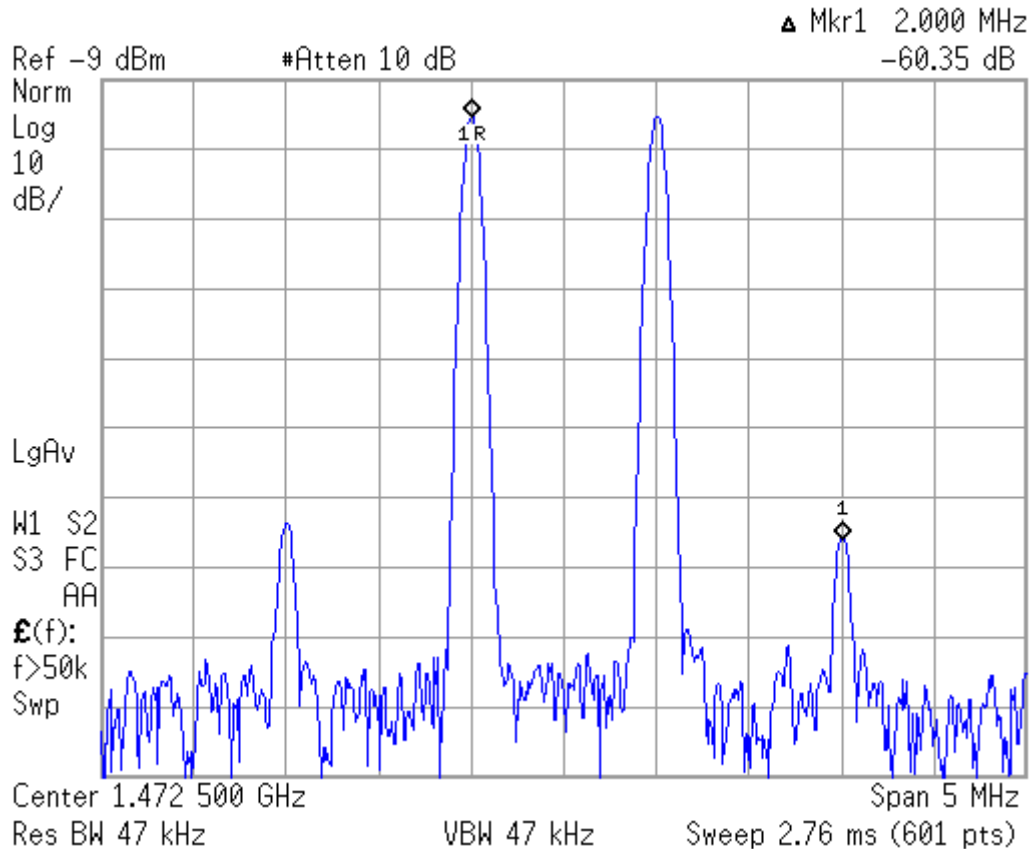
# DAB L-band Amplifier Using the MCH4015

## ■ Gain 1dB Compression Point



## ■ Input 3rd Order Intercept Point

f1 = 1452 MHz, f2 = 1492 MHz, Pin = -30 dBm



## DAB L-band Amplifier Using the MCH4015

---

ON Semiconductor and the ON logo are registered trademarks of Semiconductor Components Industries, LLC (SCILLC). SCILLC owns the rights to a number of patents, trademarks, copyrights, trade secrets, and other intellectual property. A listing of SCILLC's product/patent coverage may be accessed at [www.onsemi.com/site/pdf/Patent-Marking.pdf](http://www.onsemi.com/site/pdf/Patent-Marking.pdf). SCILLC reserves the right to make changes without further notice to any products herein. SCILLC makes no warranty, representation or guarantee regarding the suitability of its products for any particular purpose, nor does SCILLC assume any liability arising out of the application or use of any product or circuit, and specifically disclaims any and all liability, including without limitation special, consequential or incidental damages. "Typical" parameters which may be provided in SCILLC data sheets and/or specifications can and do vary in different applications and actual performance may vary over time. All operating parameters, including "Typicals" must be validated for each customer application by customer's technical experts. SCILLC does not convey any license under its patent rights nor the rights of others. SCILLC products are not designed, intended, or authorized for use as components in systems intended for surgical implant into the body, or other applications intended to support or sustain life, or for any other application in which the failure of the SCILLC product could create a situation where personal injury or death may occur. Should Buyer purchase or use SCILLC products for any such unintended or unauthorized application, Buyer shall indemnify and hold SCILLC and its officers, employees, subsidiaries, affiliates, and distributors harmless against all claims, costs, damages, and expenses, and reasonable attorney fees arising out of, directly or indirectly, any claim of personal injury or death associated with such unintended or unauthorized use, even if such claim alleges that SCILLC was negligent regarding the design or manufacture of the part. SCILLC is an Equal Opportunity/Affirmative Action Employer. This literature is subject to all applicable copyright laws and is not for resale in any manner.