

# N34C04

## EEPROM Serial 4-Kb SPD for DDR4 DIMM

### Description

The N34C04 is a EEPROM Serial 4-Kb, which implements the JEDEC JC42.4 (EE1004-v) Serial Presence Detect (SPD) specification for DDR4 DIMMs and supports the Standard (100 kHz), Fast (400 kHz) and Fast Plus (1 MHz) I<sup>2</sup>C protocols.

One of the two available 2-Kb EEPROM banks (referred to as SPD pages in the EE1004-v specification) is activated for access at power-up. After power-up, banks can be switched via software command. Each of the four 1-Kb EEPROM blocks can be Write Protected by software command.

### Features

- JEDEC JC42.4 (EE1004-v) Serial Presence Detect (SPD) Compliant
- Temperature Range: -40°C to +125°C
- Supply Range: 1.7 V – 3.6 V
- I<sup>2</sup>C / SMBus Interface
- Schmitt Triggers and Noise Suppression Filters on SCL and SDA Inputs
- 16-Byte Page Write Buffer
- Hardware Write Protection for Entire Memory
- Low Power CMOS Technology
- 2 x 3 x 0.5 mm UDFN8 Package
- These Devices are Pb-Free and are RoHS Compliant

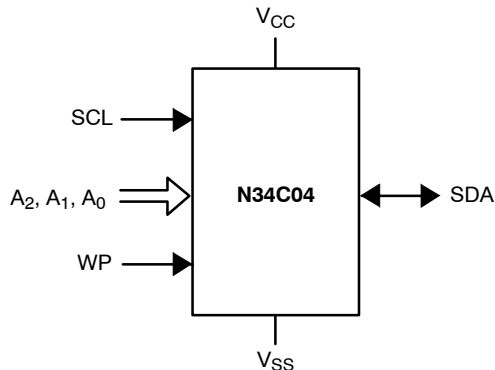


Figure 1. Functional Symbol



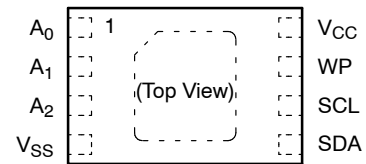
ON Semiconductor®

[www.onsemi.com](http://www.onsemi.com)



UDFN8  
MU3 SUFFIX  
CASE 517AZ

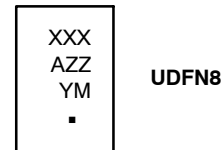
### PIN CONFIGURATION



UDFN (HU4)

For the location of Pin 1, please consult the corresponding package drawing.

### MARKING DIAGRAM



- XXX = Specific Device Code
- A = Assembly Location Code
- ZZ = Assembly Lot Number (Last Two Digits)
- Y = Production Year (Last Digit)
- M = Production Month (1 – 9, O, N, D)
- = Pb-Free Package

### PIN FUNCTIONS

| Pin Name   | Function                                |
|--|---|
| A <sub>0</sub> , A <sub>1</sub> , A <sub>2</sub> | Device Address Input                    |
| SDA  | Serial Data Input/Output                |
| SCL  | Serial Clock Input                      |
| WP   | Write Protect Input                     |
| V <sub>CC</sub>                                  | Power Supply                            |
| V <sub>SS</sub>                                  | Ground                                  |
| DAP  | Backside Exposed DAP at V <sub>SS</sub> |

### ORDERING INFORMATION

See detailed ordering and shipping information in the package dimensions section on page 10 of this data sheet.

# N34C04

**Table 1. ABSOLUTE MAXIMUM RATINGS**

| Parameter   | Rating        | Units |
|---|---------------|-------|
| Operating Temperature   | -45 to +130   | °C    |
| Storage Temperature   | -65 to +150   | °C    |
| Voltage on any pin (except A <sub>0</sub> ) with respect to Ground (Note 1) | -0.5 to +6.5  | V     |
| Voltage on pin A <sub>0</sub> with respect to Ground                        | -0.5 to +10.5 | V     |

Stresses exceeding those listed in the Maximum Ratings table may damage the device. If any of these limits are exceeded, device functionality should not be assumed, damage may occur and reliability may be affected.

1. The DC input voltage on any pin should not be lower than -0.5 V or higher than V<sub>CC</sub> + 0.5 V. The A<sub>0</sub> pin can be raised to a HV level for SWP command execution. SCL and SDA inputs can be raised to the maximum limit, irrespective of V<sub>CC</sub>.

**Table 2. RELIABILITY CHARACTERISTICS**

| Symbol                    | Parameter      | Min       | Units        |
|---------------------------|----------------|-----------|--------------|
| N <sub>END</sub> (Note 2) | Endurance      | 1,000,000 | Write Cycles |
| T <sub>DR</sub>           | Data Retention | 100       | Years        |

2. Page Mode, V<sub>CC</sub> = 2.5 V, 25°C

**Table 3. THERMAL CHARACTERISTICS** (Note 3)

| Parameter                        | Test Conditions/Comments        | Max | Unit |
|----------------------------------|---------------------------------|-----|------|
| Thermal Resistance $\theta_{JA}$ | Junction-to-Ambient (Still Air) | 92  | °C/W |

3. Power Dissipation is defined as  $P_J = (T_J - T_A)/\theta_{JA}$ , where T<sub>J</sub> is the junction temperature and T<sub>A</sub> is the ambient temperature. The thermal resistance value refers to the case of a package being used on a standard 2-layer PCB.

**Table 4. D.C. OPERATING CHARACTERISTICS** (V<sub>CC</sub> = 1.7 V to 3.6 V, T<sub>A</sub> = -40°C to +125°C, unless otherwise specified)

| Symbol            | Parameter                 | Test Conditions                                   | Min                     | Max                   | Units |
|-------------------|---------------------------|---|-------------------------|-----------------------|-------|
| I <sub>CCR</sub>  | Read Current              | Read, f <sub>SCL</sub> = 400 kHz or 1 MHz         |                         | 1                     | mA    |
| I <sub>CCW</sub>  | Write Current             | Write, during t <sub>WR</sub> (Note 4)            |                         | 1                     | mA    |
| I <sub>SB</sub>   | Standby Current           | All I/O Pins at GND or V <sub>CC</sub>            | V <sub>CC</sub> < 2.2 V | 1                     | μA    |
|                   |                           |   | V <sub>CC</sub> ≥ 2.2 V | 2                     |       |
| I <sub>L</sub>    | I/O Pin Leakage           | Pin at GND or V <sub>CC</sub>                     |                         | 2                     | μA    |
| V <sub>IL</sub>   | Input Low Voltage         |   | -0.5                    | 0.3*V <sub>CC</sub>   | V     |
| V <sub>IH</sub>   | Input High Voltage        |   | 0.7*V <sub>CC</sub>     | V <sub>CC</sub> + 0.5 | V     |
| V <sub>OL1</sub>  | Output Low Voltage        | V <sub>CC</sub> ≥ 2.2 V, I <sub>OL</sub> = 20 mA  |                         | 0.4                   | V     |
| V <sub>OL2</sub>  | Output Low Voltage        | V <sub>CC</sub> < 2.2 V, I <sub>OL</sub> = 6.0 mA |                         | 0.2                   | V     |
| V <sub>POR+</sub> | Power On Reset Threshold  | (Note 4)  |                         | 1.3                   | V     |
| V <sub>POR-</sub> | Power Off Reset Threshold | (Note 4)  | 0.8                     |                       | V     |

4. Tested initially and after a design or process change that affects this parameter

Product parametric performance is indicated in the Electrical Characteristics for the listed test conditions, unless otherwise noted. Product performance may not be indicated by the Electrical Characteristics if operated under different conditions.

# N34C04

**Table 5. A.C. CHARACTERISTICS** (Note 6)  $V_{CC} = 1.7\text{ V to }3.6\text{ V}$ ,  $T_A = -40^\circ\text{C to }+125^\circ\text{C}$ , unless otherwise specified.

| Symbol                  | Parameter                                  | Standard<br>$V_{CC} = 1.7\text{ V} - 3.6\text{ V}$ |       | Fast<br>$V_{CC} = 1.7\text{ V} - 3.6\text{ V}$ |     | Fast-Plus<br>$V_{CC} = 2.2\text{ V} - 3.6\text{ V}$ |       | Units         |
|-------------------------|--|--|-------|--|-----|---|-------|---------------|
|                         |  | Min  | Max   | Min  | Max | Min   | Max   |               |
| $f_{SCL}$ (Note 5)      | Clock Frequency                            | 10   | 100   | 10   | 400 | 10  | 1,000 | kHz           |
| $t_{HD:STA}$            | START Condition Hold Time                  | 4  |       | 0.6  |     | 0.26  |       | $\mu\text{s}$ |
| $t_{LOW}$               | Low Period of SCL Clock                    | 4.7  |       | 1.3  |     | 0.50  |       | $\mu\text{s}$ |
| $t_{HIGH}$              | High Period of SCL Clock                   | 4  |       | 0.6  |     | 0.26  |       | $\mu\text{s}$ |
| $t_{SU:STA}$            | START Condition Setup Time                 | 4.7  |       | 0.6  |     | 0.26  |       | $\mu\text{s}$ |
| $t_{HD:DI}$             | Data In Hold Time                          | 0  |       | 0  |     | 0   |       | $\mu\text{s}$ |
| $t_{SU:DAT}$            | Data In Setup Time                         | 250  |       | 100  |     | 50  |       | ns            |
| $t_R$ (Note 7)          | SDA and SCL Rise Time                      |  | 1,000 |  | 300 |   | 120   | ns            |
| $t_F$ (Note 7)          | SDA and SCL Fall Time                      |  | 300   |  | 300 |   | 120   | ns            |
| $t_{SU:STO}$            | STOP Condition Setup Time                  | 4  |       | 0.6  |     | 0.26  |       | $\mu\text{s}$ |
| $t_{BUF}$               | Bus Free Time Between STOP and START       | 4.7  |       | 1.3  |     | 0.5   |       | $\mu\text{s}$ |
| $t_{HD:DAT}$            | Data Out Hold Time                         | 200  | 3450  | 200  | 900 | 0   | 350   | ns            |
| $T_i$ (Note 7)          | Noise Pulse Filtered at SCL and SDA Inputs |  | 50    |  | 50  |   | 50    | ns            |
| $t_{SU:WP}$             | WP Setup Time                              | 0  |       | 0  |     | 0   |       | $\mu\text{s}$ |
| $t_{HD:WP}$             | WP Hold Time                               | 2.5  |       | 2.5  |     | 1   |       | $\mu\text{s}$ |
| $t_{WR}$                | Write Cycle Time                           |  | 4     |  | 4   |   | 4     | ms            |
| $t_{INIT}$ (Notes 7, 8) | Power-up to Ready Mode                     |  | 0.5   |  | 0.5 |   | 0.5   | ms            |
| $t_{POFF}$ (Note 9)     | Warm power cycle off time                  | 0.2  |       | 0.2  |     | 0.2   |       | ms            |
| $t_{TIMEOUT}$ (Note 10) | Detect clock low timeout                   | 25   | 35    | 25   | 35  | 25  | 35    | ms            |

5. The minimum clock frequency of 10 kHz is an SMBus recommendation; the minimum operating clock frequency is limited only by the SMBus time-out. The device also meets the Fast and Standard I<sup>2</sup>C specifications, except that  $T_i$  and  $t_{DH}$  are shorter, as required by the 1 MHz Fast Plus protocol.
6. Test conditions according to "A.C. Test Conditions" table.
7. Tested initially and after a design or process change that affects this parameter.
8.  $t_{INIT}$  is the delay between the Power-On Reset threshold ( $V_{POR+}$ ) and the device is ready to accept commands.
9. Power-Off delay to ensure a proper Reset when the  $V_{CC}$  drops below  $V_{POR-}$ .
10. A timeout condition can only be ensured if SCL is driven low for  $t_{TIMEOUT(Max)}$  or longer; then, N34C04 is reset and ready to receive a new START condition. N34C04 does not reset if SCL is driven low for less than  $t_{TIMEOUT(Min)}$ . The interface will reset itself and will release the SDA line if the SCL line stays low beyond the  $t_{TIMEOUT}$  limit. The time-out count takes place when SCL is low in the time interval between START and STOP.

**Table 6. A.C. TEST CONDITIONS**

|                           |  |
|---------------------------|--|
| Input Levels              | $0.2 \times V_{CC}$ to $0.8 \times V_{CC}$                     |
| Input Rise and Fall Times | $\leq 50\text{ ns}$  |
| Input Reference Levels    | $0.3 \times V_{CC}$ , $0.7 \times V_{CC}$                      |
| Output Reference Levels   | $0.3 \times V_{CC}$ , $0.7 \times V_{CC}$                      |
| Output Load               | Current Source: $I_{OL} = 6\text{ mA}$ ; $C_L = 100\text{ pF}$ |

**Table 7. PIN CAPACITANCE** ( $T_A = 25^\circ\text{C}$ ,  $V_{CC} = 3.6\text{ V}$ ,  $f = 1\text{ MHz}$ )

| Symbol   | Parameter                      | Test Conditions/Comments | Min | Max | Unit |
|----------|--------------------------------|--------------------------|-----|-----|------|
| $C_{IN}$ | SDA, Pin Capacitance           | $V_{IN} = 0$             |     | 8   | pF   |
|          | Input Capacitance (other pins) | $V_{IN} = 0$             |     | 6   | pF   |

**Table 8. INPUT IMPEDANCE**

| Symbol          | Parameter                               | Test Conditions                         | Min | Max | Unit |
|-----------------|---|---|-----|-----|------|
| Z <sub>IL</sub> | Input Impedance for A0, A1, A2, WP Pins | V <sub>IN</sub> < 0.3 * V <sub>CC</sub> | 30  |     | kΩ   |
| Z <sub>IH</sub> | Input Impedance for A0, A1, A2, WP Pins | V <sub>IN</sub> > 0.7 * V <sub>CC</sub> | 800 |     | kΩ   |

**Pin Description**

**SCL:** The Serial Clock input pin accepts the Serial Clock generated by the Master (Host).

**SDA:** The Serial Data I/O pin receives input data and transmits data stored in the memory. In transmit mode, this pin is open drain. Data is acquired on the positive edge, and is delivered on the negative edge of SCL.

**A0, A1 and A2:** The Address pins accept the device address. These pins have on-chip pull-down resistors.

**WP:** The Write Protect input pin inhibits all write operations, when pulled HIGH. This pin has an on-chip pull-down resistor. The Write Protect pin should be tied directly either to V<sub>CC</sub> or GND.

**Power-On Reset (POR)**

The N34C04 incorporates Power-On Reset (POR) circuitry which protects the device against powering up to an undetermined logic state. As V<sub>CC</sub> exceeds the POR trigger level, the device will power up into standby mode. The device will power down into Reset mode when V<sub>CC</sub> drops below the POR trigger level. This bi-directional POR behavior protects the N34C04 against brown-out failure following a temporary loss of power. The POR trigger level is set below the minimum operating V<sub>CC</sub> level.

**Device Interface**

The N34C04 supports the Inter-Integrated Circuit (I<sup>2</sup>C) and the System Management Bus (SMBus) data transmission protocols. These protocols describe serial communication between transmitters and receivers sharing a 2-wire data bus. Data flow is controlled by a Master device, which generates the serial clock and the START and STOP conditions. The N34C04 acts as a Slave device. Master and Slave alternate as transmitter and receiver. Up to 8 N34C04 devices may be present on the bus simultaneously, and can be individually addressed by matching the logic state of the address inputs A0, A1, and A2.

**I<sup>2</sup>C/SMBus Protocol**

The I<sup>2</sup>C/SMBus uses two ‘wires’, one for clock (SCL) and one for data (SDA). The two wires are connected to the V<sub>CC</sub>

supply via pull-up resistors. Master and Slave devices connect to the bus via their respective SCL and SDA pins. The transmitting device pulls down the SDA line to ‘transmit’ a ‘0’ and releases it to ‘transmit’ a ‘1’.

Data transfer may be initiated only when the bus is not busy (see A.C. Characteristics).

During data transfer, the SDA line must remain stable while the SCL line is HIGH. An SDA transition while SCL is HIGH will be interpreted as a START or STOP condition (Figure 2).

**START**

The START condition precedes all commands. It consists of a HIGH to LOW transition on SDA while SCL is HIGH. The START acts as a ‘wake-up’ call to all Slaves. Absent a START, a Slave will not respond to commands.

**STOP**

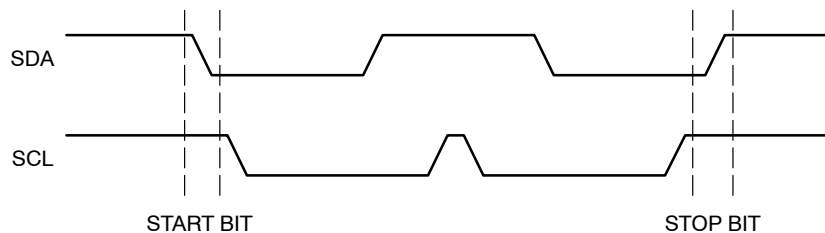
The STOP condition completes all commands. It consists of a LOW to HIGH transition on SDA while SCL is HIGH. The STOP tells the Slave that no more data will be written to or read from the Slave.

**Device Addressing**

The Master initiates data transfer by creating a START condition on the bus. The Master then broadcasts an 8-bit serial Slave address. The first 4 bits of the Slave address (the preamble) determine whether the command is a read/write command (1010b) or a utility command (0110b), as described in Table 9. The next 3 bits, A2, A1 and A0, select one of 8 possible Slave devices. The last bit, R/ $\overline{W}$ , specifies whether a Read (1) or Write (0) operation is being performed.

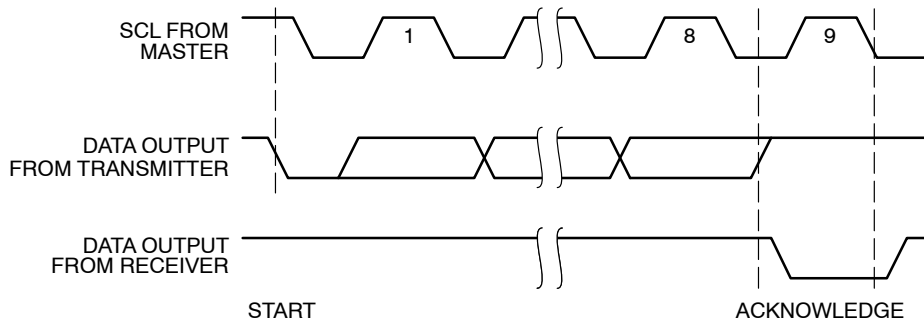
**Acknowledge**

A matching Slave address is acknowledged (ACK) by the Slave by pulling down the SDA line during the 9<sup>th</sup> clock cycle (Figure 3). After that, the Slave will acknowledge all data bytes sent to the bus by the Master. When the Slave is the transmitter, the Master will in turn acknowledge data bytes in the 9<sup>th</sup> clock cycle. The Slave will stop transmitting after the Master does not respond with acknowledge (NoACK) and then issues a STOP. Bus timing is illustrated in Figure 4.

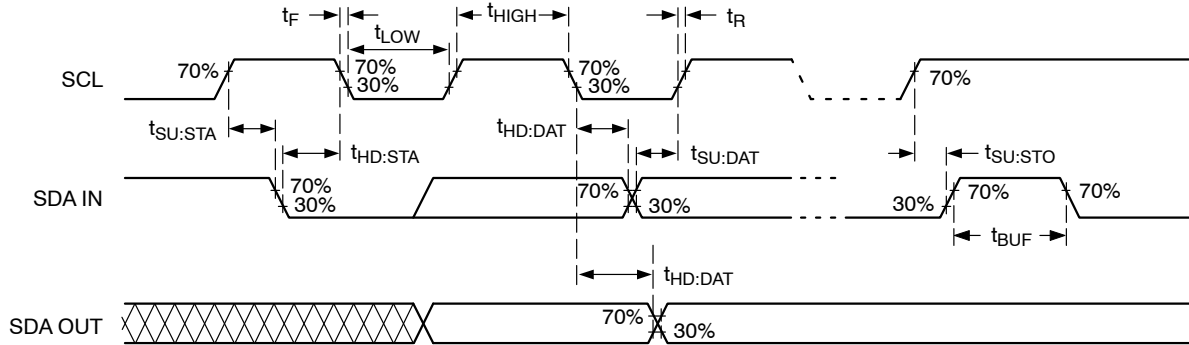


**Figure 2. Start/Stop Timing**

# N34C04



**Figure 3. Acknowledge Timing**



**Figure 4. Bus Timing**

**Table 9. COMMAND SET** (Notes 11, 12)

| Function                                      | Abbr | Function Specific Preamble |    |    |    | Select Address      |      |      | R/W_n | A0 Pin                  |
|---|------|----------------------------|----|----|----|---------------------|------|------|-------|-------------------------|
|   |      | b7                         | b6 | b5 | b4 | b3                  | b2   | b1   | b0    |                         |
| Read EE Memory                                | RSPD | 1                          | 0  | 1  | 0  | LSA2                | LSA1 | LSA0 | 1     | 0 or 1                  |
| Write EE Memory                               | WSPD |                            |    |    |    |                     |      |      | 0     |                         |
| Set Write Protection, block 0                 | SWP0 | 0                          | 1  | 1  | 0  | 0                   | 0    | 1    | 0     | V <sub>HV</sub>         |
| Set Write Protection, block 1                 | SWP1 |                            |    |    |    | 1                   | 0    | 0    | 0     | V <sub>HV</sub>         |
| Set Write Protection, block 2                 | SWP2 |                            |    |    |    | 1                   | 0    | 1    | 0     | V <sub>HV</sub>         |
| Set Write Protection, block 3                 | SWP3 |                            |    |    |    | 0                   | 0    | 0    | 0     | V <sub>HV</sub>         |
| Clear All Write Protection                    | CWP  |                            |    |    |    | 0                   | 1    | 1    | 0     | V <sub>HV</sub>         |
| Read Protection Status, block 0               | RPS0 |                            |    |    |    | 0                   | 0    | 1    | 1     | 0, 1 or V <sub>HV</sub> |
| Read Protection Status, block 1               | RPS1 |                            |    |    |    | 1                   | 0    | 0    | 1     | 0, 1 or V <sub>HV</sub> |
| Read Protection Status, block 2               | RPS2 |                            |    |    |    | 1                   | 0    | 1    | 1     | 0, 1 or V <sub>HV</sub> |
| Read Protection Status, block 3               | RPS3 |                            |    |    |    | 0                   | 0    | 0    | 1     | 0, 1 or V <sub>HV</sub> |
| Set SPD Page Address to 0 (Select Lower Bank) | SPA0 |                            |    |    |    | 1                   | 1    | 0    | 0     | 0, 1 or V <sub>HV</sub> |
| Set SPD Page Address to 1 (Select Upper Bank) | SPA1 |                            |    |    |    | 1                   | 1    | 1    | 0     | 0, 1 or V <sub>HV</sub> |
| Read SPD Page Address                         | RPA  |                            |    |    |    | 1                   | 1    | 0    | 1     | 0, 1 or V <sub>HV</sub> |
| Reserved                                      | -    |                            |    |    |    | All Other Encodings |      |      |       |                         |

11. LSAx stands for Logic State of Address pin x.

12. If V<sub>HV</sub> is not applied on the A0 pin during SWP/CWP commands, the N34C04 will respond with NoACK after the 3rd byte and will not execute the SWP/CWP instruction. During RPS/SPA/RPA commands the state of pin A0 must be stable for the duration of the sequence.

**EEPROM Bank Selection**

Upon power-up, the address pointer is initialized to 00h pointing to the first location in the lower 2-Kb bank (SPD page 0).

Only one SPD page is visible (active) at any given time. The lower SPD page is automatically selected at power-up. The upper SPD page can be activated (and the lower one implicitly de-activated) by executing the SPA1 utility command. The SPA0 utility command can then be used to re-activate the lower SPD page without powering down. The identity of the active SPD page can be retrieved with the RPA command.

SPD page selection related command details are presented in Table 11c, Table 11d, Figure 12 and Figure 13.

**Write Operations**

**EEPROM Byte Write**

To write data to the EEPROM, the Master creates a START condition on the bus, and then sends out the appropriate Slave address (with the R/W bit set to '0'), followed by a starting data byte address, followed by data. The matching Slave will acknowledge the Slave address, EEPROM byte address and the data byte (Figure 5). The Master then ends the session by creating a STOP condition on the bus. The STOP starts the internal Write cycle for the (non-volatile) EEPROM data (Figure 6).

**EEPROM Page Write**

Each of the two 2-Kb banks is organized as 16 pages of 16 bytes each (not to be confused with the SPD page, which refers to the entire 2-Kb bank). One of the 16 memory pages is selected by the 4 most significant bits of the byte address, while the 4 least significant bits point to the byte position within the page. Up to 16 bytes can be written in one Write cycle (Figure 7).

During data load, the internal byte position pointer is automatically incremented after each data byte is loaded. If the Master transmits more than 16 data bytes, then earlier data will be replaced by later data in a 'wrap-around' fashion within the 16-byte wide data buffer. The internal Write cycle then starts following the STOP.

**Acknowledge Polling**

Acknowledge polling can be used to determine if the N34C04 is busy writing to EEPROM, or is ready to accept commands. Polling is executed by interrogating the device with a 'Selective Read' command (see READ

OPERATIONS). The N34C04 will not acknowledge the Slave address as long as internal EEPROM Write is in progress.

**Hardware Write Protection**

With the WP pin held HIGH, the entire memory is protected against Write operations. If the WP pin is left floating or is grounded, it has no impact on the operation of the N34C04. The state of the WP pin is strobed on the last falling edge of SCL immediately preceding the first data byte (Figure 8). If the WP pin is HIGH during the strobe interval, the N34C04 will not acknowledge the data byte and the Write request will be rejected.

**Delivery State**

The N34C04 is shipped 'unprotected', i.e. none of the Software Write Protection (SWP) flags is set. The entire memory is erased, i.e. all bytes are 0xFF.

**Read Operations**

**Immediate Read**

A N34C04 presented with a Slave address containing a '1' in the R/W position will acknowledge the Slave address and will then start transmitting EEPROM data from the current address pointer location. The Master stops this transmission by responding with NoACK, followed by a STOP (Figure 9).

**Selective Read**

The Read operation can be started from a specific address, by preceding the Immediate Read sequence with a 'data less' Write sequence. The Master sends out a START, Slave address and byte address, but rather than following up with data (as in a Write operation), the Master then issues another START and continuous with an Immediate Read sequence (Figure 10).

**Sequential EEPROM Read**

EEPROM data can be read out indefinitely, as long as the Master responds with ACK (Figure 11). The internal address pointer is automatically incremented after every data byte sent to the bus. If the end of the active 2-Kb bank is reached during continuous Read, then the address count 'wraps-around' to the beginning of the active 2-Kb bank, etc. Sequential Read works with either Immediate Read or Selective Read, the only difference being that in the latter case the starting address is intentionally updated.

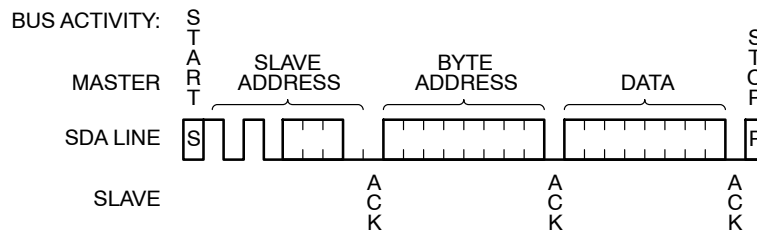
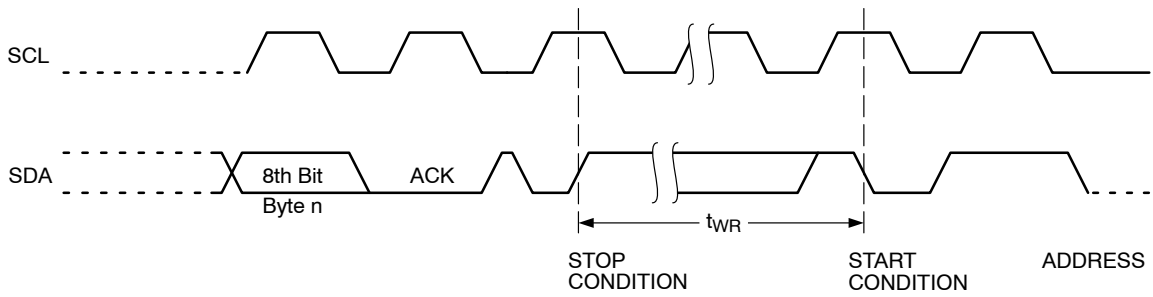
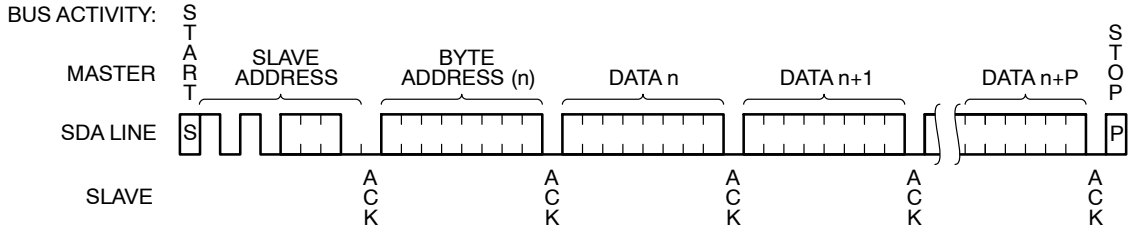


Figure 5. EEPROM Byte Write

# N34C04

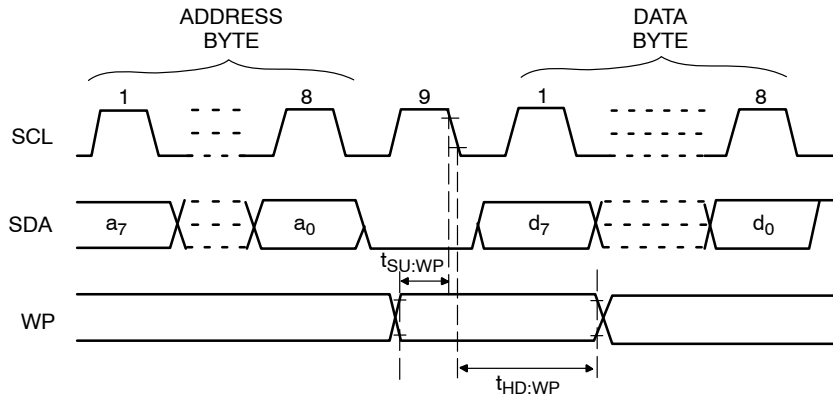


**Figure 6. EEPROM Write Cycle Timing**

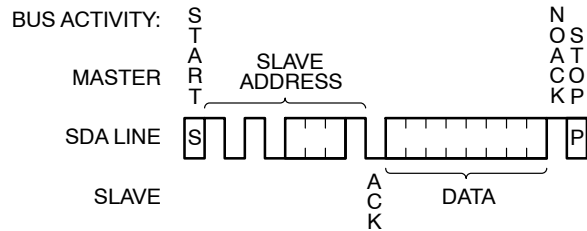


NOTE: In this example  $n = \text{XXXX } 0000(\text{B})$ ;  $X = 1 \text{ or } 0$

**Figure 7. EEPROM Page Write**



**Figure 8. WP Timing**



**Figure 9. EEPROM Immediate Read**

# N34C04

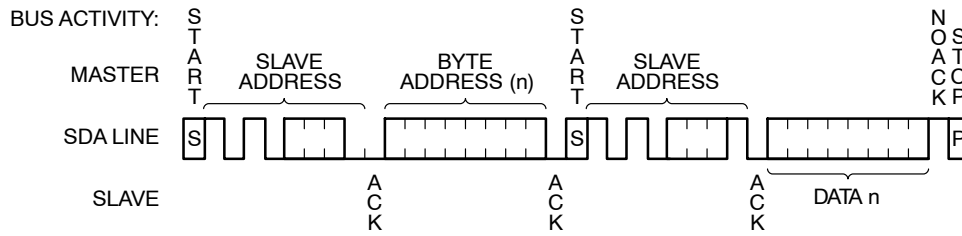


Figure 10. EEPROM Selective Read

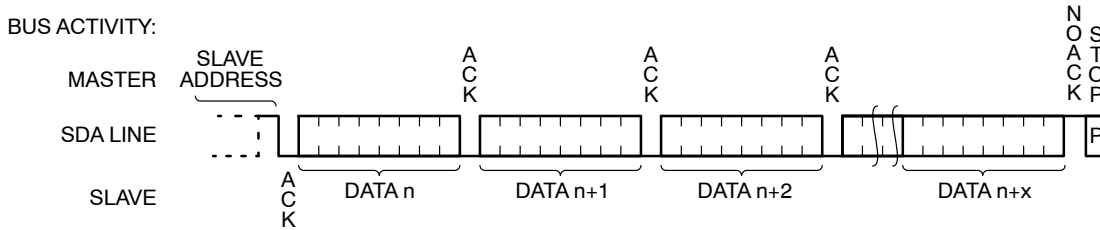


Figure 11. EEPROM Sequential Read

## Software Write Protection

Each 1-Kb memory block can be individually protected against Write requests. Block identities are:

- Block 0: byte address 0x00...0x7F (SPD page address = 0)
- Block 1: byte address 0x80...0xFF (SPD page address = 0)
- Block 2: byte address 0x00...0x7F (SPD page address = 1)
- Block 3: byte address 0x80...0xFF (SPD page address = 1)

Block Software Write Protection (SWP) flags can be set or cleared in the presence of a very high voltage  $V_{HV}$  on address pin A0. The  $V_{HV}$  condition must be established on

pin A0 before the START and maintained just beyond the STOP. The D.C. OPERATING CONDITIONS for SWP operations are shown in Table 10.

SWP command details are listed in Tables 11a and 11b.

SWP Slave addresses follow the standard I<sup>2</sup>C convention, i.e. to read the state of a SWP flag, the LSB of the Slave address must be '1', and to set or clear a flag, it must be '0'. For Set/Clear commands a dummy byte address and dummy data byte must be provided (Figure 12). In contrast to a regular memory Read, a SWP Read does not return data. Instead the N34C04 will respond with NoACK if the flag is set and with ACK if the flag is not set (Figure 13).

Table 10. SWPn AND CWP D.C. OPERATION CONDITION

| Symbol          | Parameter                                      | Test Conditions          | Min | Max | Units |
|-----------------|--|--------------------------|-----|-----|-------|
| $\Delta V_{HV}$ | A <sub>0</sub> Overdrive ( $V_{HV} - V_{CC}$ ) | 1.7 V < $V_{CC}$ < 3.6 V | 4.8 |     | V     |
| $I_{HVD}$       | A <sub>0</sub> High Voltage Detector Current   |                          |     | 0.1 | mA    |
| $V_{HV}$        | A <sub>0</sub> Very High Voltage               |                          | 7   | 10  | V     |



# N34C04

**Table 11a. SWP SET COMMAND DETAIL (following Slave Address)**

| Command       | Block(x) Protection | Slave Response | Address Byte | Slave Response | Data Byte | Slave Response | Write Cycle |
|---------------|---------------------|----------------|--------------|----------------|-----------|----------------|-------------|
| SWPx(Note 13) | Not Set             | ACK            | (Dummy)      | ACK            | (Dummy)   | ACK            | Yes         |
|               | Set                 | NoACK          | (Dummy)      | NoACK          | (Dummy)   | NoACK          | No          |
| CWP           | X                   | ACK            | (Dummy)      | ACK            | (Dummy)   | ACK            | Yes         |

**Table 11b. SWP QUERRY COMMAND DETAIL (following Slave Address)**

| Command        | Block(x) Protection | Slave Response | Data Byte | Master (Response) | Data Byte | Master (Response) |  |
|----------------|---------------------|----------------|-----------|-------------------|-----------|-------------------|--|
| RPSx (Note 14) | Not Set             | ACK            | Dummy     | (NoACK)           | Dummy     | (NoACK)           |  |
|                | Set                 | NoACK          | Dummy     | (NoACK)           | Dummy     | (NoACK)           |  |

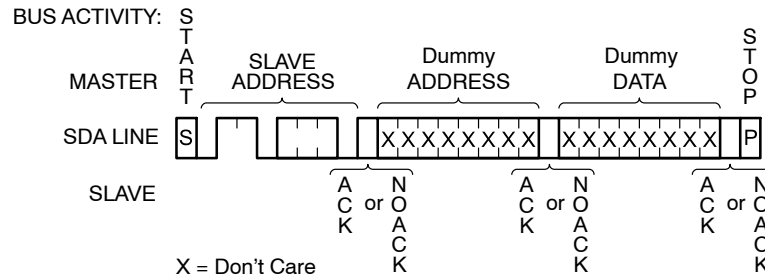
**Table 11c. SPD PAGE SELECT COMMAND DETAIL (following Slave Address)**

| Command                 | SPD Active Page | Slave Response | Address Byte | Slave Response | Data Byte | Slave Response | Write Cycle |
|-------------------------|-----------------|----------------|--------------|----------------|-----------|----------------|-------------|
| SPAx (Notes 15, 16, 17) | X               | ACK            | (Dummy)      | ACK            | (Dummy)   | NoACK/ACK      | No          |

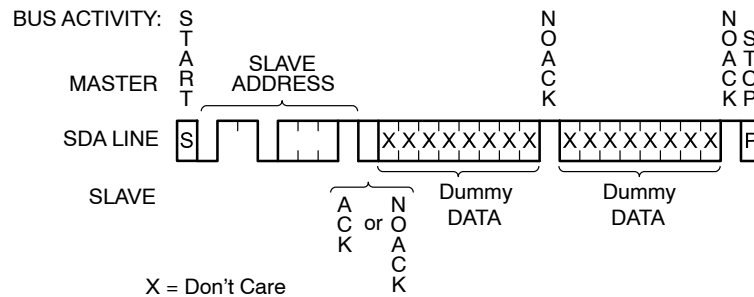
**Table 11d. SPD ACTIVE PAGE QUERRY COMMAND DETAIL (following Slave Address)**

| Command       | SPD Active Page | Slave Response | Data Byte | Master (Response) | Data Byte | Master (Response) |  |
|---------------|-----------------|----------------|-----------|-------------------|-----------|-------------------|--|
| RPA (Note 14) | 0               | ACK            | Dummy     | (NoACK)           | Dummy     | (NoACK)           |  |
|               | 1               | NoACK          | Dummy     | (NoACK)           | Dummy     | (NoACK)           |  |

- 13. The Master can terminate the sequence by issuing a STOP once the N34C04 responds with NoACK
- 14. The Master can terminate the sequence by responding with (NoACK) followed by STOP after any dummy data byte.
- 15. Setting the SPD Page Address to '0' selects the lower 2-Kb EEPROM bank, setting it to '1' selects the upper 2-Kb EEPROM bank.
- 16. The lower 2-Kb EEPROM bank (corresponding to SPD page address '0') is active (visible) immediately following power-up.
- 17. The N34C04MU3ETG will respond with NoACK following the dummy Data Byte, while the N34C04MU3EKTG will respond with ACK.



**Figure 12. SWP & SPA Timing**



**Figure 13. RPS & RPA Timing**

# N34C04

## ORDERING INFORMATION

| Device Order Number | Specific Device Marking | Package Type | Temperature Range | Lead Finish | Shipping <sup>†</sup>              |
|---------------------|-------------------------|--------------|-------------------|-------------|------------------------------------|
| N34C04MU3ETG        | D2U                     | UDFN8        | -40°C to +125°C   | NiPdAu      | Tape & Reel,<br>4,000 Units / Reel |
| N34C04MU3EKTG       | AKU                     | UDFN8        | -40°C to +125°C   | NiPdAu      | Tape & Reel,<br>4,000 Units / Reel |

<sup>†</sup>For information on tape and reel specifications, including part orientation and tape sizes, please refer to our Tape and Reel Packaging Specifications Brochure, BRD8011/D.

18. All packages are RoHS-compliant (Lead-free, Halogen-free)

19. The standard lead finish is NiPdAu.

ON Semiconductor is licensed by the Philips Corporation to carry the I<sup>2</sup>C bus protocol.

# MECHANICAL CASE OUTLINE

## PACKAGE DIMENSIONS

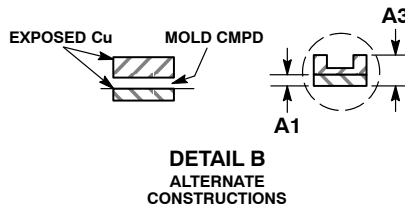
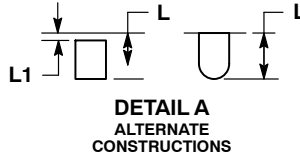
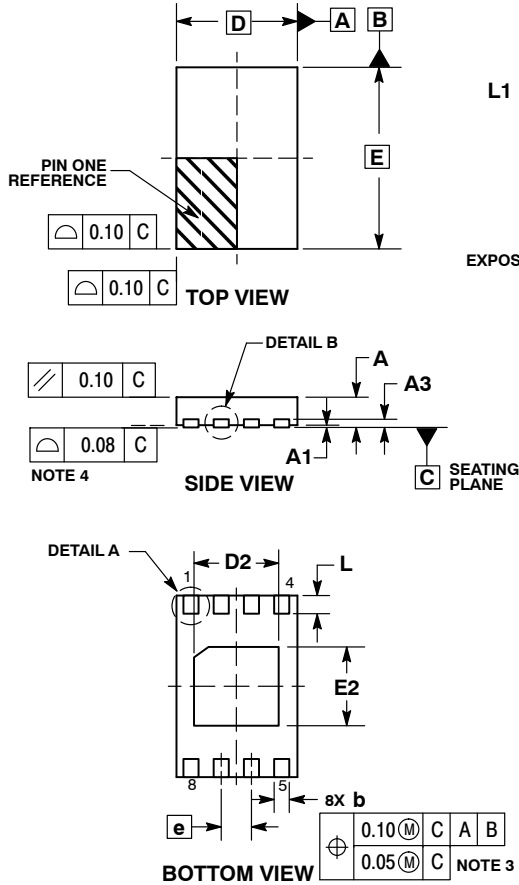
ON Semiconductor®



SCALE 2:1

### UDFN8, 2x3 EXTENDED PAD CASE 517AZ ISSUE A

DATE 23 MAR 2015

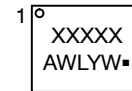


**NOTES:**

1. DIMENSIONING AND TOLERANCING PER ASME Y14.5M, 1994.
2. CONTROLLING DIMENSION: MILLIMETERS.
3. DIMENSION b APPLIES TO PLATED TERMINAL AND IS MEASURED BETWEEN 0.15 AND 0.25MM FROM THE TERMINAL TIP.
4. COPLANARITY APPLIES TO THE EXPOSED PAD AS WELL AS THE TERMINALS.

| DIM | MILLIMETERS |      |
|-----|-------------|------|
|     | MIN         | MAX  |
| A   | 0.45        | 0.55 |
| A1  | 0.00        | 0.05 |
| A3  | 0.13 REF    |      |
| b   | 0.20        | 0.30 |
| D   | 2.00 BSC    |      |
| D2  | 1.35        | 1.45 |
| E   | 3.00 BSC    |      |
| E2  | 1.25        | 1.35 |
| e   | 0.50 BSC    |      |
| L   | 0.25        | 0.35 |
| L1  | ---         | 0.15 |

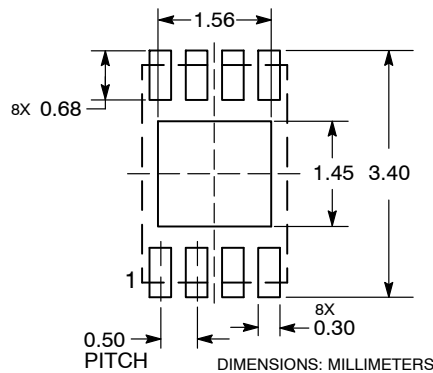
### GENERIC MARKING DIAGRAM\*



- XXXXX = Specific Device Code
- A = Assembly Location
- WL = Wafer Lot
- Y = Year
- W = Work Week
- = Pb-Free Package

\*This information is generic. Please refer to device data sheet for actual part marking. Pb-Free indicator, "G" or microdot "▪", may or may not be present.

### RECOMMENDED SOLDERING FOOTPRINT\*



\*For additional information on our Pb-Free strategy and soldering details, please download the ON Semiconductor Soldering and Mounting Techniques Reference Manual, SOLDERRM/D.

|                         |                                |  |
|-------------------------|--------------------------------|--|
| <b>DOCUMENT NUMBER:</b> | <b>98AON42552E</b>             | Electronic versions are uncontrolled except when accessed directly from the Document Repository. Printed versions are uncontrolled except when stamped "CONTROLLED COPY" in red. |
| <b>DESCRIPTION:</b>     | <b>UDFN8, 2X3 EXTENDED PAD</b> | <b>PAGE 1 OF 1</b>   |

ON Semiconductor and ON are trademarks of Semiconductor Components Industries, LLC dba ON Semiconductor or its subsidiaries in the United States and/or other countries. ON Semiconductor reserves the right to make changes without further notice to any products herein. ON Semiconductor makes no warranty, representation or guarantee regarding the suitability of its products for any particular purpose, nor does ON Semiconductor assume any liability arising out of the application or use of any product or circuit, and specifically disclaims any and all liability, including without limitation special, consequential or incidental damages. ON Semiconductor does not convey any license under its patent rights nor the rights of others.

**onsemi**, **Onsemi**, and other names, marks, and brands are registered and/or common law trademarks of Semiconductor Components Industries, LLC dba "**onsemi**" or its affiliates and/or subsidiaries in the United States and/or other countries. **onsemi** owns the rights to a number of patents, trademarks, copyrights, trade secrets, and other intellectual property. A listing of **onsemi**'s product/patent coverage may be accessed at [www.onsemi.com/site/pdf/Patent-Marking.pdf](http://www.onsemi.com/site/pdf/Patent-Marking.pdf). **onsemi** reserves the right to make changes at any time to any products or information herein, without notice. The information herein is provided "as-is" and **onsemi** makes no warranty, representation or guarantee regarding the accuracy of the information, product features, availability, functionality, or suitability of its products for any particular purpose, nor does **onsemi** assume any liability arising out of the application or use of any product or circuit, and specifically disclaims any and all liability, including without limitation special, consequential or incidental damages. Buyer is responsible for its products and applications using **onsemi** products, including compliance with all laws, regulations and safety requirements or standards, regardless of any support or applications information provided by **onsemi**. "Typical" parameters which may be provided in **onsemi** data sheets and/or specifications can and do vary in different applications and actual performance may vary over time. All operating parameters, including "Typicals" must be validated for each customer application by customer's technical experts. **onsemi** does not convey any license under any of its intellectual property rights nor the rights of others. **onsemi** products are not designed, intended, or authorized for use as a critical component in life support systems or any FDA Class 3 medical devices or medical devices with a same or similar classification in a foreign jurisdiction or any devices intended for implantation in the human body. Should Buyer purchase or use **onsemi** products for any such unintended or unauthorized application, Buyer shall indemnify and hold **onsemi** and its officers, employees, subsidiaries, affiliates, and distributors harmless against all claims, costs, damages, and expenses, and reasonable attorney fees arising out of, directly or indirectly, any claim of personal injury or death associated with such unintended or unauthorized use, even if such claim alleges that **onsemi** was negligent regarding the design or manufacture of the part. **onsemi** is an Equal Opportunity/Affirmative Action Employer. This literature is subject to all applicable copyright laws and is not for resale in any manner.

## PUBLICATION ORDERING INFORMATION

### LITERATURE FULFILLMENT:

Email Requests to: [orderlit@onsemi.com](mailto:orderlit@onsemi.com)

**onsemi Website:** [www.onsemi.com](http://www.onsemi.com)

### TECHNICAL SUPPORT

**North American Technical Support:**

Voice Mail: 1 800-282-9855 Toll Free USA/Canada

Phone: 011 421 33 790 2910

**Europe, Middle East and Africa Technical Support:**

Phone: 00421 33 790 2910

For additional information, please contact your local Sales Representative