

# NPN Silicon Transistor

## FJB5555

### Features

- Fast Speed Switching
- Wide Safe Operating Area
- High Voltage Capability
- This is a Pb-Free and Halide Free Device

### Applications

- Electronic Ballast
- Switched Mode Power Supplies

### ABSOLUTE MAXIMUM RATINGS ( $T_A = 25^\circ\text{C}$ , unless otherwise noted)

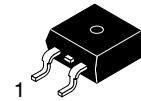
Symbol	Parameter	Value	Unit
$BV_{CBO}$	Collector-Base Voltage	1050	V
$BV_{CEO}$	Collector-Emitter Voltage	400	V
$BV_{EBO}$	Emitter-Base Voltage	14	V
$I_C$	Collector Current (DC)	5	A
$I_{CP}$	Collector Current (Pulse)	10	A
$I_B$	Base Current (DC)	2	A
$I_{BP}$	Base Current (Pulse)	4	A
$T_J$	Junction Temperature	150	$^\circ\text{C}$
$T_{STG}$	Storage Junction Temperature Range	-55 to +150	$^\circ\text{C}$

Stresses exceeding those listed in the Maximum Ratings table may damage the device. If any of these limits are exceeded, device functionality should not be assumed, damage may occur and reliability may be affected.

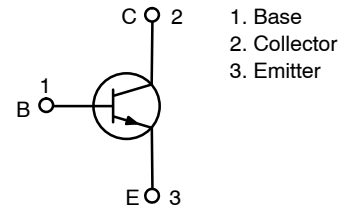
### THERMAL CHARACTERISTICS ( $T_A = 25^\circ\text{C}$ , unless otherwise noted)

Symbol	Parameter		Value	Unit
P <sub>D</sub>	Total Device Dissipation	T <sub>A</sub> = 25 °C	1.6	W
		T <sub>C</sub> = 25 °C	100	W
R <sub>θja</sub>	Thermal Resistance, Junction to Ambient (Note 1)		77.75	°C/W
R <sub>θjc</sub>	Thermal Resistance Junction to Case (Note 2)		1.25	°C/W

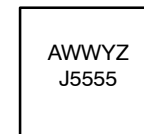
1. Device mounted on FR-4 PCB, board size = 101.5 mm  $\times$  114.5 mm.
2.  $R_{\theta jc}$  test fixture under infinite cooling condition.



D2PAK-3  
(TO-263, 3-LEAD)  
CASE 418AJ



### MARKING DIAGRAM



A = Assembly Location  
 WW = Work Week  
 Y = Year  
 Z = Lot Traceability  
 J5555 = Specific Device Code

### ORDERING INFORMATION

Device	Package	Shipping <sup>†</sup>
FJB5555TM	D2PAK-3 (TO-263, 3-LEAD)	800 / Tape & Reel

<sup>†</sup>For information on tape and reel specifications, including part orientation and tape sizes, please refer to our Tape and Reel Packaging Specification Brochure, [BRD8011/D](#).

**ELECTRICAL CHARACTERISTICS** ( $T_C = 25\text{ }^{\circ}\text{C}$  unless otherwise noted) (Note 3)

Symbol	Parameter	Test Condition	Min	Typ	Max	Unit
$BV_{CBO}$	Collector-Base Breakdown Voltage	$I_C = 500\text{ }\mu\text{A}$ , $I_E = 0$	1050	–	–	V
$BV_{CEO}$	Collector-Emitter Breakdown Voltage	$I_C = 5\text{ mA}$ , $I_B = 0$	400	–	–	V
$BV_{EBO}$	Emitter-Base Breakdown Voltage	$I_E = 500\text{ }\mu\text{A}$ , $I_C = 0$	14	–	–	V
$h_{FE}$	DC Current Gain	$V_{CE} = 5\text{ V}$ , $I_C = 10\text{ mA}$	10	–	–	
		$V_{CE} = 3\text{ V}$ , $I_C = 0.8\text{ A}$	20	–	40	
$V_{CE(sat)}$	Collector-Emitter Saturation Voltage	$I_C = 1\text{ A}$ , $I_B = 0.2\text{ A}$	–	0.17	0.50	V
		$I_C = 3.5\text{ A}$ , $I_B = 1.0\text{ A}$	–	–	1.5	V
$V_{BE(sat)}$	Base-Emitter Saturation Voltage	$I_C = 3.5\text{ A}$ , $I_B = 1.0\text{ A}$	–	–	1.2	V
$C_{ob}$	Output Capacitance	$V_{CB} = 10\text{ V}$ , $f = 1\text{ MHz}$	–	45	–	pF
$t_{ON}$	Turn-On Time	$V_{CC} = 125\text{ V}$ , $I_C = 0.5\text{ A}$ , $I_{B1} = 45\text{ mA}$ , $I_{B2} = -0.5\text{ A}$ , $R_L = 250\text{ }\Omega$	–	–	1.0	$\mu\text{s}$
$t_{STG}$	Storage Time		–	–	1.2	$\mu\text{s}$
$t_F$	Fall Time		–	0.3	–	$\mu\text{s}$
$t_{ON}$	Turn-On Time	$V_{CC} = 250\text{ V}$ , $I_C = 2.5\text{ A}$ , $I_{B1} = 0.5\text{ A}$ , $I_{B2} = -1.0\text{ A}$ , $R_L = 100\text{ }\Omega$	–	–	2.0	$\mu\text{s}$
$t_{STG}$	Storage Time		–	–	2.5	$\mu\text{s}$
$t_F$	Fall Time		–	–	0.3	$\mu\text{s}$
EAS	Avalanche Energy	$L = 2\text{ mH}$	6	–	–	mJ

Product parametric performance is indicated in the Electrical Characteristics for the listed test conditions, unless otherwise noted. Product performance may not be indicated by the Electrical Characteristics if operated under different conditions.

3. Pulse test: pulse width  $\leq 300\text{ }\mu\text{s}$ , duty cycle  $\leq 2\%$

## TYPICAL PERFORMANCE CHARACTERISTICS

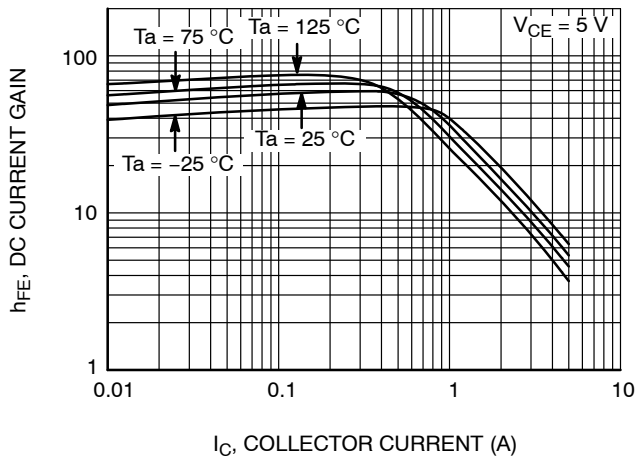


Figure 1. DC Current Gain

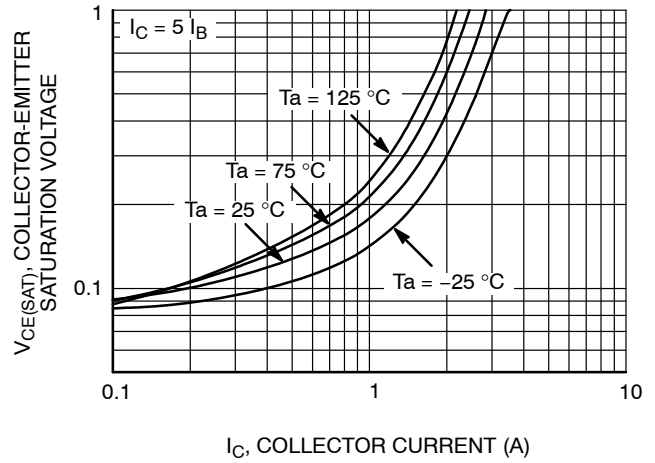


Figure 2. Saturation Voltage

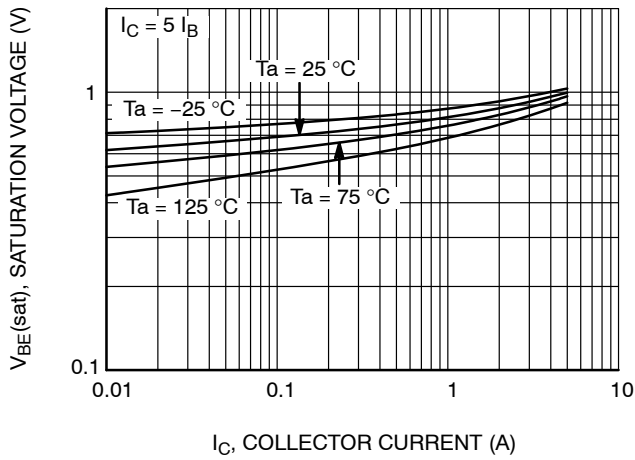


Figure 3. Saturation Voltage

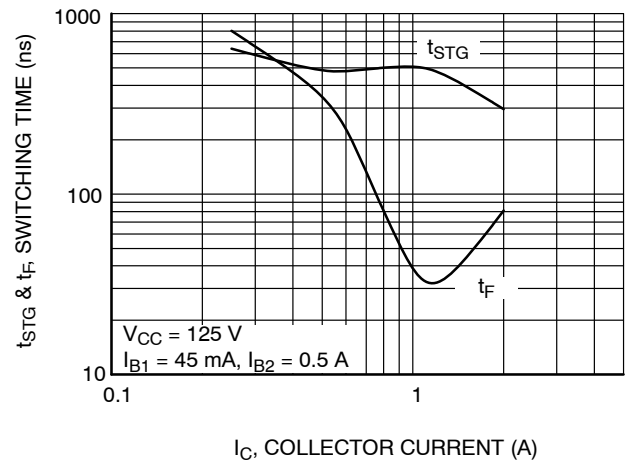


Figure 4. Resistive Load Switching

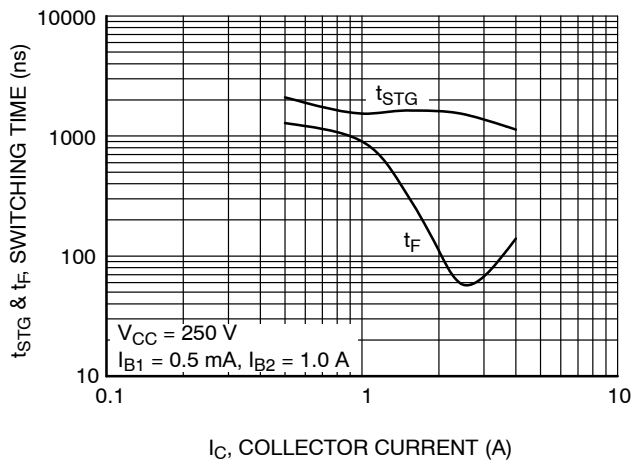


Figure 5. Resistive Load Switching

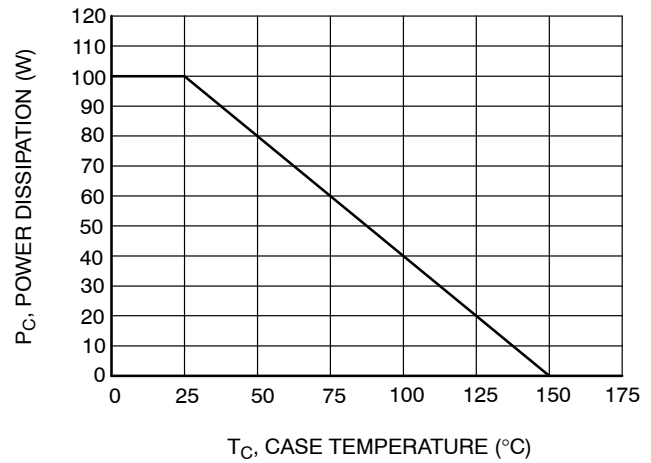
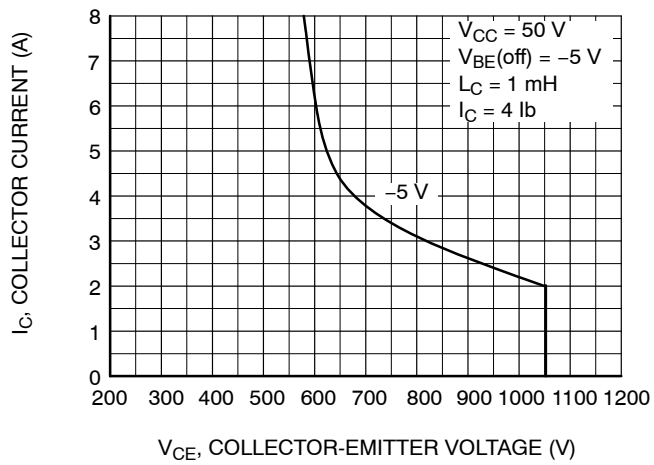
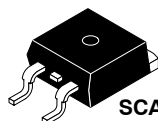


Figure 6. Power Derating

## TYPICAL PERFORMANCE CHARACTERISTICS (continued)

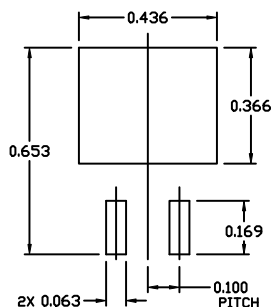
**Figure 7. Reverse Bias Safe Operating**



SCALE 1:1

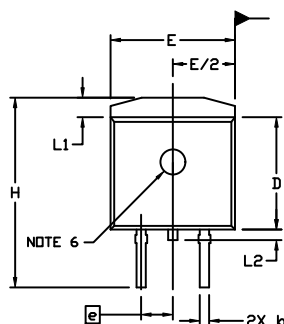
D<sup>2</sup>PAK-3 (TO-263, 3-LEAD)  
CASE 418AJ  
ISSUE F

DATE 11 MAR 2021



RECOMMENDED  
MOUNTING FOOTPRINT

For additional information on our Pb-free strategy and soldering details, please download the ON Semiconductor Soldering and Mounting Techniques Reference Manual, SOLDERRM/D.

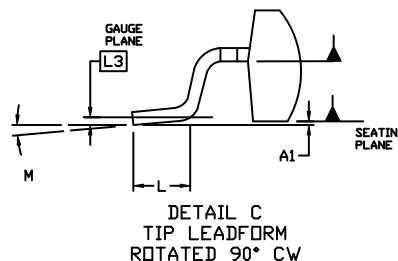
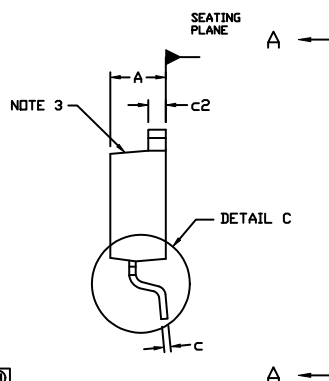


0.100 BSC 0.100 BSC

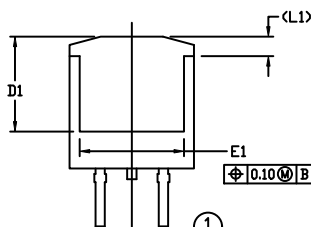
NOTES:

1. DIMENSIONING AND TOLERANCING PER ASME Y14.5M, 2009.
2. CONTROLLING DIMENSION: INCHES
3. CHAMFER OPTIONAL.
4. DIMENSIONS D AND E DO NOT INCLUDE MOLD FLASH. MOLD FLASH SHALL NOT EXCEED 0.005 PER SIDE. THESE DIMENSIONS ARE MEASURED AT THE OUTERMOST EXTREMES OF THE PLASTIC BODY AT DATUM H.
5. THERMAL PAD CONTOUR IS OPTIONAL WITHIN DIMENSIONS E, L1, D1, AND E1.
6. OPTIONAL MOLD FEATURE.
7. ①, ② ... OPTIONAL CONSTRUCTION FEATURE CALL OUTS.

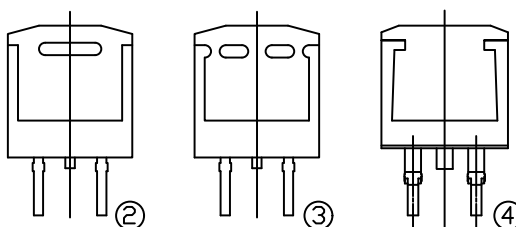
DIM	INCHES		MILLIMETERS	
	MIN.	MAX.	MIN.	MAX.
A	0.160	0.190	4.06	4.83
A1	0.000	0.010	0.00	0.25
b	0.020	0.039	0.51	0.99
c	0.012	0.029	0.30	0.74
c2	0.045	0.065	1.14	1.65
D	0.330	0.380	8.38	9.65
D1	0.260	---	6.60	---
E	0.380	0.420	9.65	10.67
E1	0.245	---	6.22	---
e	0.100 BSC	---	2.54 BSC	---
H	0.575	0.625	14.60	15.88
L	0.070	0.110	1.78	2.79
L1	---	0.066	---	1.68
L2	---	0.070	---	1.78
L3	0.010 BSC	---	0.25 BSC	---
M	0°	8°	0°	8°



DETAIL C  
TIP LEADFORM  
ROTATED 90° CW

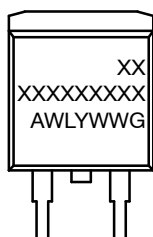


VIEW A-A

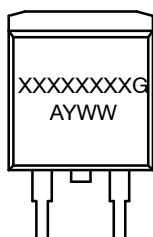


VIEW A-A  
OPTIONAL CONSTRUCTIONS

GENERIC MARKING DIAGRAMS\*



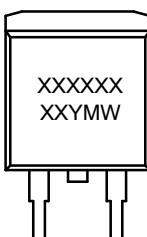
IC



Standard



Rectifier



SSG

XXXXXX = Specific Device Code  
A = Assembly Location  
WL = Wafer Lot  
Y = Year  
WW = Work Week  
W = Week Code (SSG)  
M = Month Code (SSG)  
G = Pb-Free Package  
AKA = Polarity Indicator

\*This information is generic. Please refer to device data sheet for actual part marking. Pb-free indicator, "G" or microdot "•", may or may not be present. Some products may not follow the Generic Marking.

DOCUMENT NUMBER:	98AON56370E	Electronic versions are uncontrolled except when accessed directly from the Document Repository. Printed versions are uncontrolled except when stamped "CONTROLLED COPY" in red.
DESCRIPTION:	D <sup>2</sup> PAK-3 (TO-263, 3-LEAD)	PAGE 1 OF 1

onsemi and Onsemi are trademarks of Semiconductor Components Industries, LLC dba onsemi or its subsidiaries in the United States and/or other countries. onsemi reserves the right to make changes without further notice to any products herein. onsemi makes no warranty, representation or guarantee regarding the suitability of its products for any particular purpose, nor does onsemi assume any liability arising out of the application or use of any product or circuit, and specifically disclaims any and all liability, including without limitation special, consequential or incidental damages. onsemi does not convey any license under its patent rights nor the rights of others.

**onsemi**, **Onsemi**, and other names, marks, and brands are registered and/or common law trademarks of Semiconductor Components Industries, LLC dba "**onsemi**" or its affiliates and/or subsidiaries in the United States and/or other countries. **onsemi** owns the rights to a number of patents, trademarks, copyrights, trade secrets, and other intellectual property. A listing of **onsemi**'s product/patent coverage may be accessed at [www.onsemi.com/site/pdf/Patent-Marking.pdf](http://www.onsemi.com/site/pdf/Patent-Marking.pdf). **onsemi** reserves the right to make changes at any time to any products or information herein, without notice. The information herein is provided "as-is" and **onsemi** makes no warranty, representation or guarantee regarding the accuracy of the information, product features, availability, functionality, or suitability of its products for any particular purpose, nor does **onsemi** assume any liability arising out of the application or use of any product or circuit, and specifically disclaims any and all liability, including without limitation special, consequential or incidental damages. Buyer is responsible for its products and applications using **onsemi** products, including compliance with all laws, regulations and safety requirements or standards, regardless of any support or applications information provided by **onsemi**. "Typical" parameters which may be provided in **onsemi** data sheets and/or specifications can and do vary in different applications and actual performance may vary over time. All operating parameters, including "Typicals" must be validated for each customer application by customer's technical experts. **onsemi** does not convey any license under any of its intellectual property rights nor the rights of others. **onsemi** products are not designed, intended, or authorized for use as a critical component in life support systems or any FDA Class 3 medical devices or medical devices with a same or similar classification in a foreign jurisdiction or any devices intended for implantation in the human body. Should Buyer purchase or use **onsemi** products for any such unintended or unauthorized application, Buyer shall indemnify and hold **onsemi** and its officers, employees, subsidiaries, affiliates, and distributors harmless against all claims, costs, damages, and expenses, and reasonable attorney fees arising out of, directly or indirectly, any claim of personal injury or death associated with such unintended or unauthorized use, even if such claim alleges that **onsemi** was negligent regarding the design or manufacture of the part. **onsemi** is an Equal Opportunity/Affirmative Action Employer. This literature is subject to all applicable copyright laws and is not for resale in any manner.

## ADDITIONAL INFORMATION

### TECHNICAL PUBLICATIONS:

Technical Library: [www.onsemi.com/design/resources/technical-documentation](http://www.onsemi.com/design/resources/technical-documentation)  
onsemi Website: [www.onsemi.com](http://www.onsemi.com)

### ONLINE SUPPORT: [www.onsemi.com/support](http://www.onsemi.com/support)

For additional information, please contact your local Sales Representative at  
[www.onsemi.com/support/sales](http://www.onsemi.com/support/sales)