

# MOSFET – Dual P-Channel POWERTRENCH®

**-30 V, -3.3 A, 87 mΩ**

## FDMA3027PZ, FDMA3027PZ-F130

### Description

This device is designed specifically as a single package solution for dual switching requirements such as gate driver for larger Mosfets. It features two independent P-Channel MOSFETs with low on-state resistance for minimum conduction losses.

The MicroFET 2x2 package offers exceptional thermal performance for its physical size and is well suited to linear mode applications. G-S zener has been added to enhance ESD voltage level.

### Features

- Max  $R_{DS(on)}$  = 87 mΩ at  $V_{GS} = -10$  V,  $I_D = -3.3$  A
- Max  $R_{DS(on)}$  = 152 mΩ at  $V_{GS} = -4.5$  V,  $I_D = -2.3$  A
- HBM ESD Protection Level > 2 kV Typical (Note 3)
- Low Profile – 0.8 mm Maximum – in the New Package MicroFET 2x2 mm
- These Devices are Pb-Free and are RoHS Compliant

### Typical Applications

- Load Switch
- Discrete Gate Driver

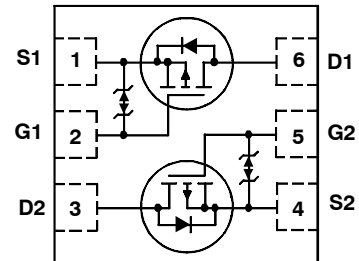
### MOSFET Maximum Ratings $T_A = 25^\circ\text{C}$ unless otherwise noted

Symbol	Parameter	Ratings	Units
$V_{DS}$	Drain to Source Voltage	-30	V
$V_{GS}$	Gate to Source Voltage	$\pm 25$	V
$I_D$	Drain Current –Continuous (Note 1a)	-3.3	A
	–Pulsed	-15	
$P_D$	Power Dissipation (Note 1a)	1.4	W
	Power Dissipation (Note 1b)	0.7	
$T_J, T_{STG}$	Operating and Storage Junction Temperature Range	-55 to +150	$^\circ\text{C}$

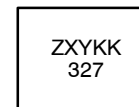
Stresses exceeding those listed in the Maximum Ratings table may damage the device. If any of these limits are exceeded, device functionality should not be assumed, damage may occur and reliability may be affected.



WDFN6 2X2, 0.65P  
CASE 511DA

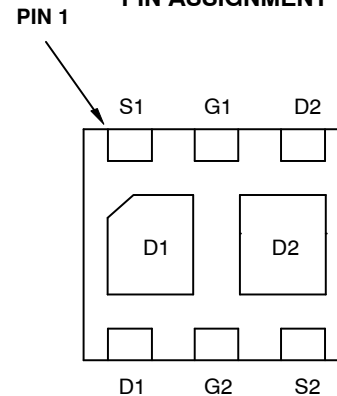


### MARKING DIAGRAM



- Z = Assembly Plan Code
- XY = Date Code (Year & week)
- KK = Lot Run Traceability Code
- 327 = Specific Device Code

### PIN ASSIGNMENT



### ORDERING INFORMATION

See detailed ordering and shipping information on page 7 of this data sheet.

# FDMA3027PZ, FDMA3027PZ-F130

## Thermal Characteristics

R <sub>θJA</sub>	Thermal Resistance for Single Operation, Junction to Ambient (Note 1a)	86	°C/W
	Thermal Resistance for Single Operation, Junction to Ambient (Note 1b)	173	°C/W
	Thermal Resistance for Dual Operation, Junction to Ambient (Note 1c)	69	°C/W
	Thermal Resistance for Dual Operation, Junction to Ambient (Note 1d)	151	°C/W
	Thermal Resistance for Single Operation, Junction to Ambient (Note 1e)	160	°C/W
	Thermal Resistance for Dual Operation, Junction to Ambient (Note 1f)	133	°C/W

## ELECTRICAL CHARACTERISTICS T<sub>A</sub> = 25°C unless otherwise noted

Symbol	Parameter	Test Conditions	Min	Typ	Max	Units
--------	-----------	-----------------	-----	-----	-----	-------

### Off Characteristics

BV <sub>DSS</sub>	Drain to Source Breakdown Voltage	I <sub>D</sub> = -250 μA, V <sub>GS</sub> = 0 V	-30	-	-	V
$\frac{\Delta BV_{DSS(th)}}{\Delta T_J}$	Breakdown Voltage Temperature Coefficient	I <sub>D</sub> = -250 μA, referenced to 25°C	-	-22	-	mV/°C
I <sub>DSS</sub>	Zero Gate Voltage Drain Current	V <sub>DS</sub> = -24 V, V <sub>GS</sub> = 0 V	-	-	-1	μA
I <sub>GSS</sub>	Gate to Source Leakage Current	V <sub>GS</sub> = ±25 V, V <sub>DS</sub> = 0 V	-	-	±10	μA

### On Characteristics

V <sub>GS(th)</sub>	Gate to Source Threshold Voltage	V <sub>GS</sub> = V <sub>DS</sub> , I <sub>D</sub> = -250 μA	-1	-1.9	-3	V
$\frac{\Delta V_{GS(th)}}{\Delta T_J}$	Gate to Source Threshold Voltage Temperature Coefficient	I <sub>D</sub> = -250 μA, referenced to 25°C	-	5	-	mV/°C
R <sub>DS(on)</sub>	Static Drain to Source On Resistance	V <sub>GS</sub> = -10 V, I <sub>D</sub> = -3.3 A	-	69	87	mΩ
		V <sub>GS</sub> = -4.5 V, I <sub>D</sub> = -2.3 A	-	108	152	
		V <sub>GS</sub> = -10 V, I <sub>D</sub> = -3.3 A, T <sub>J</sub> = 125°C	-	97	122	
g <sub>FS</sub>	Forward Transconductance	V <sub>DS</sub> = -5 V, I <sub>D</sub> = -3.3 A	-	6	-	S

### Dynamic Characteristics

C <sub>iss</sub>	Input Capacitance	V <sub>DS</sub> = -15 V, V <sub>GS</sub> = 0 V, f = 1 MHz	-	324	435	pF
C <sub>oss</sub>	Output Capacitance		-	59	80	pF
C <sub>rss</sub>	Reverse Transfer Capacitance		-	53	80	pF
R <sub>g</sub>	Gate Resistance		-	12	-	Ω

### Switching Characteristics

t <sub>d(on)</sub>	Turn-On Delay Time	V <sub>DD</sub> = -15 V, I <sub>D</sub> = -3.3 A, V <sub>GS</sub> = -10 V, R <sub>GEN</sub> = 6 Ω	-	5.2	11	ns
t <sub>r</sub>	Rise Time		-	3	10	ns
t <sub>d(off)</sub>	Turn-Off Delay Time		-	17	31	ns
t <sub>f</sub>	Fall Time		-	11	25	ns
Q <sub>g(TOT)</sub>	Total Gate Charge	V <sub>GS</sub> = 0 V to -10 V, V <sub>DD</sub> = -15 V, I <sub>D</sub> = -3.3 A	-	7.2	10	nC
		V <sub>GS</sub> = 0 V to -5 V, V <sub>DD</sub> = -15 V, I <sub>D</sub> = -3.3 A	-	4.1	6	nC
Q <sub>gs</sub>	Gate to Source Charge	V <sub>DD</sub> = -15 V, I <sub>D</sub> = -3.3 A	-	1.0	-	nC
Q <sub>gd</sub>	Gate to Drain "Miller" Charge		-	1.9	-	nC

# FDMA3027PZ, FDMA3027PZ-F130

## ELECTRICAL CHARACTERISTICS (continued) $T_A = 25^\circ\text{C}$ unless otherwise noted

Symbol	Parameter	Test Conditions	Min	Typ	Max	Units
--------	-----------	-----------------	-----	-----	-----	-------

### Drain-Source Diode Characteristics

$V_{SD}$	Source to Drain Diode Forward Voltage	$V_{GS} = 0\text{ V}$ , $I_S = -3.3\text{ A}$ (Note 2)	-	-0.94	-1.3	V
$t_{rr}$	Reverse Recovery Time	$I_F = -3.3\text{ A}$ , $di/dt = 100\text{ A}/\mu\text{s}$	-	20	32	ns
$Q_{rr}$	Reverse Recovery Charge		-	10	18	nC

Product parametric performance is indicated in the Electrical Characteristics for the listed test conditions, unless otherwise noted. Product performance may not be indicated by the Electrical Characteristics if operated under different conditions.

1.  $R_{\theta JA}$  is determined with the device mounted on a 1 in<sup>2</sup> oz. copper pad on a 1.5 x 1.5 in. board of FR-4 material.  $R_{\theta JC}$  is guaranteed by design while  $R_{\theta JA}$  is determined by the user's board design.

(a)  $R_{\theta JA} = 86^\circ\text{C}/\text{W}$  when mounted on a 1 in<sup>2</sup> pad of 2 oz copper, 1.5" x 1.5" x 0.062" thick PCB. For single operation.

(b)  $R_{\theta JA} = 173^\circ\text{C}/\text{W}$  when mounted on a minimum pad of 2 oz copper. For single operation.

(c)  $R_{\theta JA} = 69^\circ\text{C}/\text{W}$  when mounted on a 1 in<sup>2</sup> pad of 2 oz copper, 1.5" x 1.5" x 0.062" thick PCB. For dual operation.

(d)  $R_{\theta JA} = 151^\circ\text{C}/\text{W}$  when mounted on a minimum pad of 2 oz copper. For dual operation.

(e)  $R_{\theta JA} = 160^\circ\text{C}/\text{W}$  when mounted on a 30 mm<sup>2</sup> pad of 2 oz copper. For single operation.

(f)  $R_{\theta JA} = 133^\circ\text{C}/\text{W}$  when mounted on a 30 mm<sup>2</sup> pad of 2 oz copper. For dual operation.



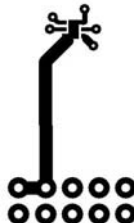
a.  $86^\circ\text{C}/\text{W}$  when mounted on a 1 in<sup>2</sup> pad of 2 oz copper



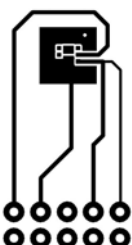
b.  $173^\circ\text{C}/\text{W}$  when mounted on a minimum pad of 2 oz copper



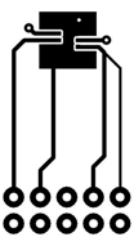
c.  $69^\circ\text{C}/\text{W}$  when mounted on a 1 in<sup>2</sup> pad of 2 oz copper



d.  $151^\circ\text{C}/\text{W}$  when mounted on a minimum pad of 2 oz copper



e.  $160^\circ\text{C}/\text{W}$  when mounted on 30 mm<sup>2</sup> pad of 2 oz copper



f.  $133^\circ\text{C}/\text{W}$  when mounted on 30 mm<sup>2</sup> pad of 2 oz copper

2. Pulse Test : Pulse Width < 300 us, Duty Cycle < 2.0%

3. The diode connected between gate and source serves only as protection against ESD. No gate overvoltage rating is implied.

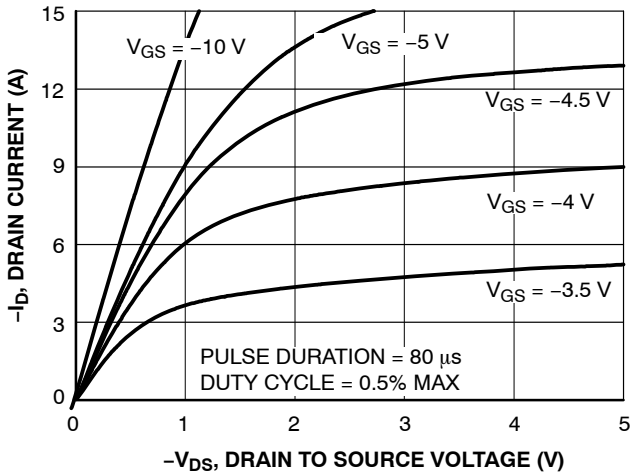


Figure 1. On-Region Characteristics

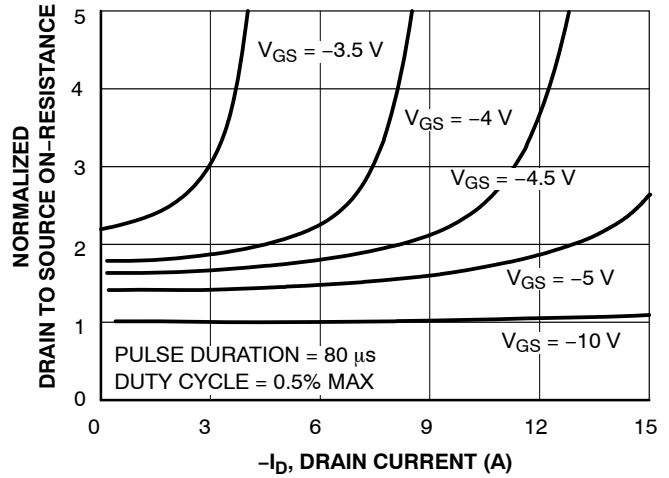


Figure 2. Normalized On-Resistance vs Drain Current and Gate Voltage

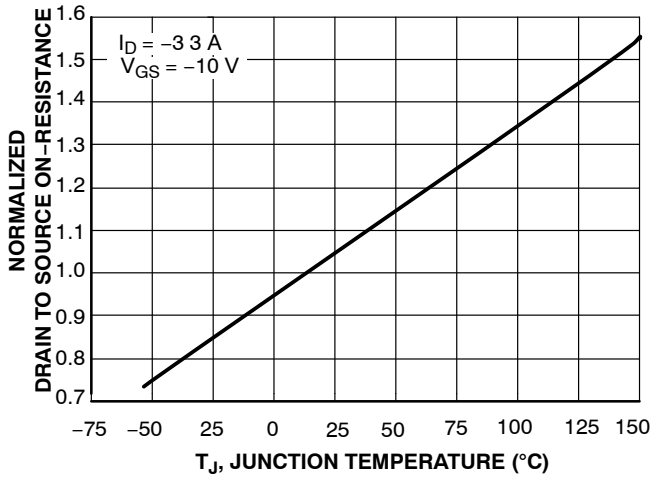


Figure 3. Normalized On-Resistance vs Junction Temperature

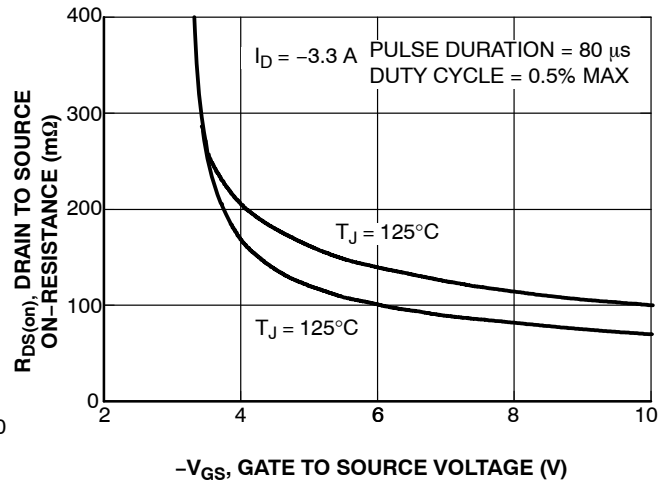


Figure 4. On-Resistance vs Gate to Source Voltage

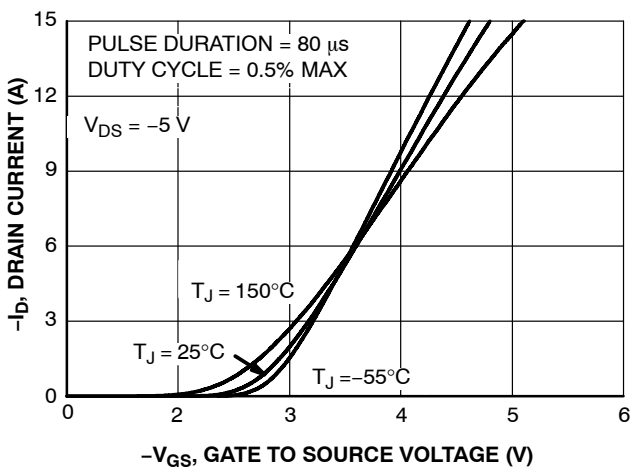


Figure 5. Transfer Characteristics

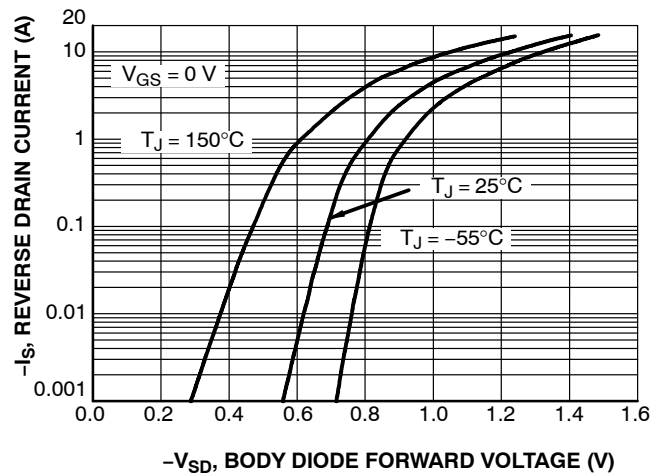


Figure 6. Source to Drain Diode Forward Voltage vs Source Current

TYPICAL CHARACTERISTICS (continued)

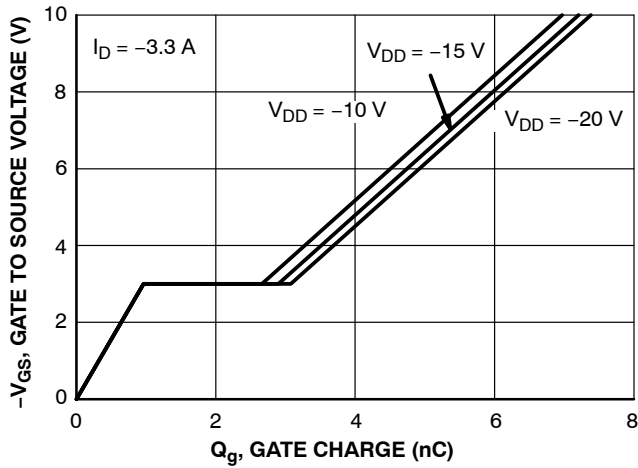


Figure 7. Gate Charge Characteristics

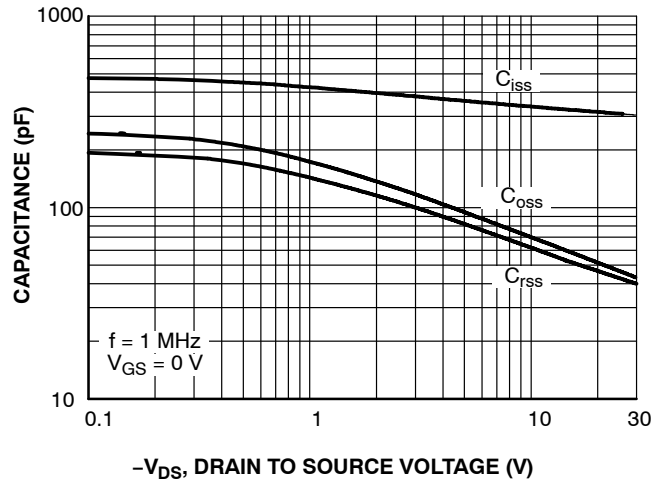


Figure 8. Capacitance vs Drain to Source Voltage

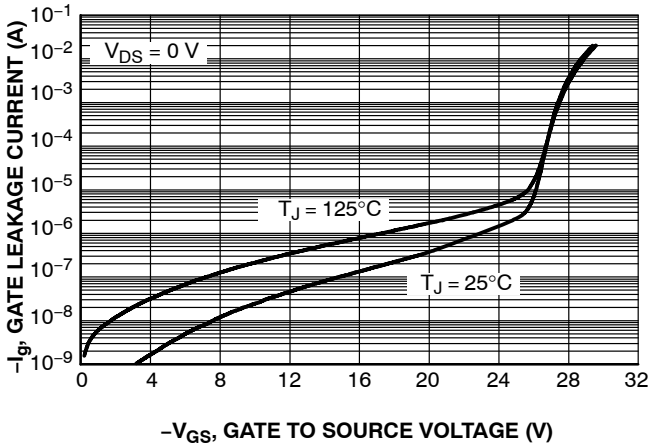


Figure 9. Gate Leakage Current vs Gate to Source Voltage

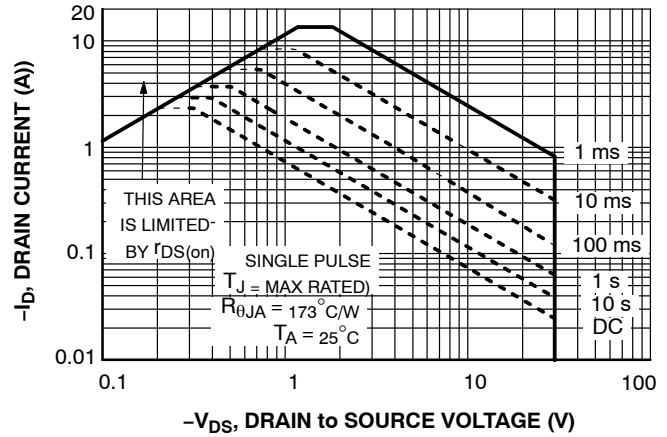


Figure 10. Forward Bias Safe Operating Area

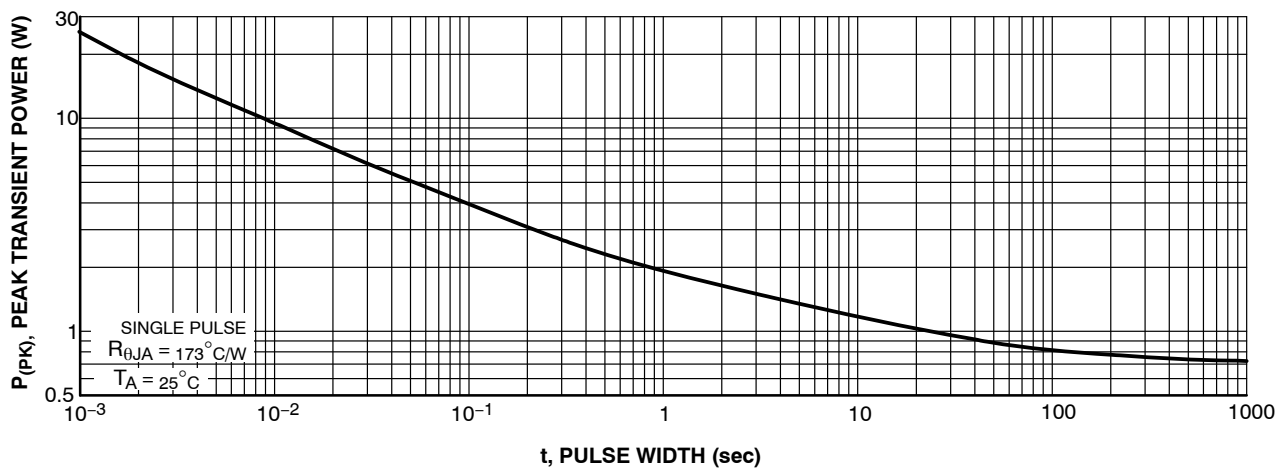


Figure 11. Single Pulse Maximum Power Dissipation

TYPICAL CHARACTERISTICS (continued)

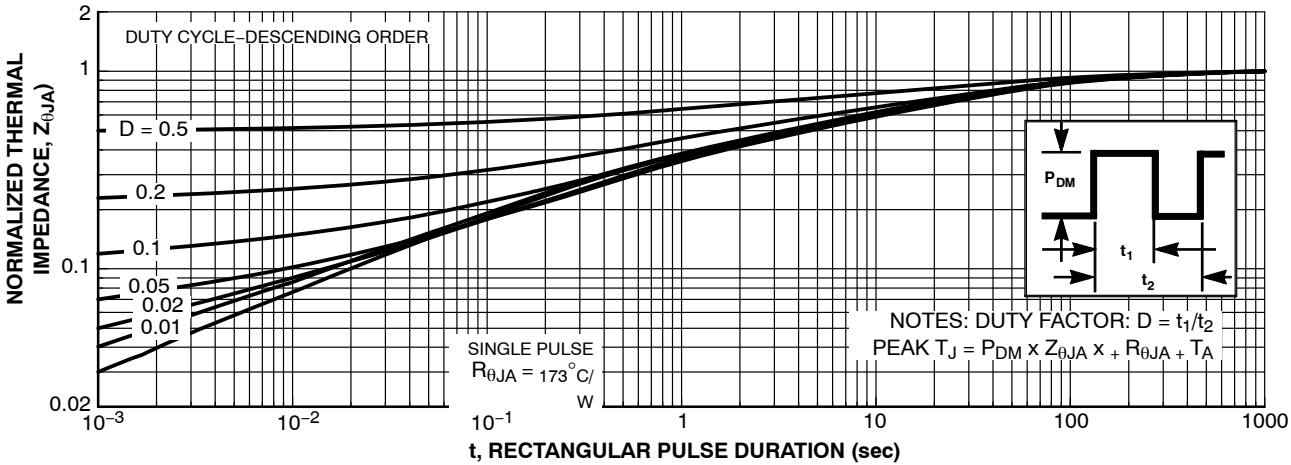


Figure 12. Junction-to-Ambient Transient Thermal Response Curve

## FDMA3027PZ, FDMA3027PZ-F130

### ORDERING INFORMATION

Device Order Number	Package Type	Pin 1 Orientation in Tape Cavity	Shipping <sup>†</sup>
FDMA3027PZ	WDFN-6 (Pb-Free/Halide Free)	Top Left	3000 / Tape and Reel
FDMA3027PZ-F130	WDFN-6 (Pb-Free/Halide Free)	Top Right	3000 / Tape and Reel

<sup>†</sup>For information on tape and reel specifications, including part orientation and tape sizes, please refer to our Tape and Reel Packaging Specifications Brochure, [BRD8011/D](#).

# MECHANICAL CASE OUTLINE

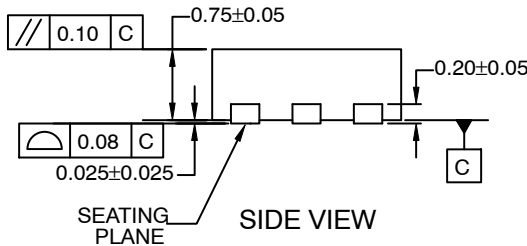
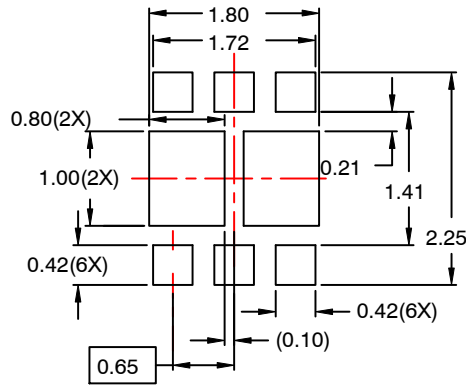
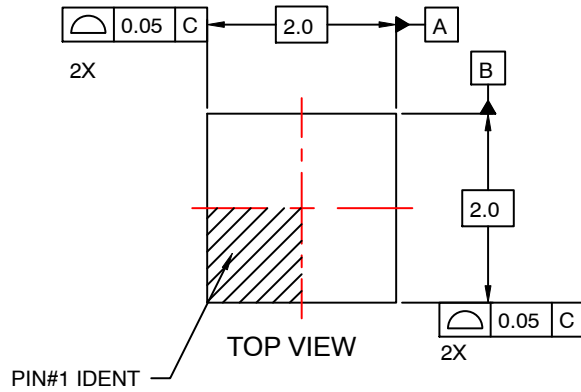
## PACKAGE DIMENSIONS

ON Semiconductor®



WDFN6 2x2, 0.65P  
CASE 511DA  
ISSUE O

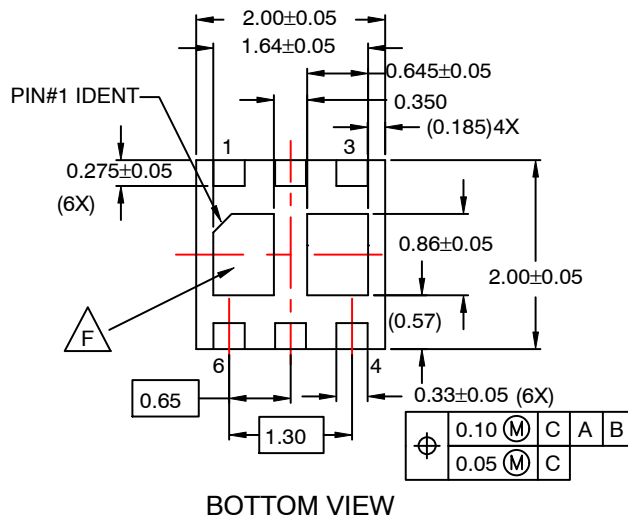
DATE 31 JUL 2016



NOTES:

- A. CONFORM TO JEDEC REGISTRATIONS MO-229, VARIATION VCCC, EXCEPT WHERE NOTED.
- B. DIMENSIONS ARE IN MILLIMETERS.
- C. DIMENSIONS AND TOLERANCES PER ASME Y14.5M, 2009.
- D. LAND PATTERN RECOMMENDATION IS EXISTING INDUSTRY LAND PATTERN.

NON-JEDEC DUAL DAP



<b>DOCUMENT NUMBER:</b>	<b>98AON13615G</b>	Electronic versions are uncontrolled except when accessed directly from the Document Repository. Printed versions are uncontrolled except when stamped "CONTROLLED COPY" in red.
<b>DESCRIPTION:</b>	<b>WDFN6 2X2, 0.65P</b>	<b>PAGE 1 OF 1</b>

ON Semiconductor and are trademarks of Semiconductor Components Industries, LLC dba ON Semiconductor or its subsidiaries in the United States and/or other countries. ON Semiconductor reserves the right to make changes without further notice to any products herein. ON Semiconductor makes no warranty, representation or guarantee regarding the suitability of its products for any particular purpose, nor does ON Semiconductor assume any liability arising out of the application or use of any product or circuit, and specifically disclaims any and all liability, including without limitation special, consequential or incidental damages. ON Semiconductor does not convey any license under its patent rights nor the rights of others.



**onsemi**, **Onsemi**, and other names, marks, and brands are registered and/or common law trademarks of Semiconductor Components Industries, LLC dba "**onsemi**" or its affiliates and/or subsidiaries in the United States and/or other countries. **onsemi** owns the rights to a number of patents, trademarks, copyrights, trade secrets, and other intellectual property. A listing of **onsemi**'s product/patent coverage may be accessed at [www.onsemi.com/site/pdf/Patent-Marking.pdf](http://www.onsemi.com/site/pdf/Patent-Marking.pdf). **onsemi** reserves the right to make changes at any time to any products or information herein, without notice. The information herein is provided "as-is" and **onsemi** makes no warranty, representation or guarantee regarding the accuracy of the information, product features, availability, functionality, or suitability of its products for any particular purpose, nor does **onsemi** assume any liability arising out of the application or use of any product or circuit, and specifically disclaims any and all liability, including without limitation special, consequential or incidental damages. Buyer is responsible for its products and applications using **onsemi** products, including compliance with all laws, regulations and safety requirements or standards, regardless of any support or applications information provided by **onsemi**. "Typical" parameters which may be provided in **onsemi** data sheets and/or specifications can and do vary in different applications and actual performance may vary over time. All operating parameters, including "Typicals" must be validated for each customer application by customer's technical experts. **onsemi** does not convey any license under any of its intellectual property rights nor the rights of others. **onsemi** products are not designed, intended, or authorized for use as a critical component in life support systems or any FDA Class 3 medical devices or medical devices with a same or similar classification in a foreign jurisdiction or any devices intended for implantation in the human body. Should Buyer purchase or use **onsemi** products for any such unintended or unauthorized application, Buyer shall indemnify and hold **onsemi** and its officers, employees, subsidiaries, affiliates, and distributors harmless against all claims, costs, damages, and expenses, and reasonable attorney fees arising out of, directly or indirectly, any claim of personal injury or death associated with such unintended or unauthorized use, even if such claim alleges that **onsemi** was negligent regarding the design or manufacture of the part. **onsemi** is an Equal Opportunity/Affirmative Action Employer. This literature is subject to all applicable copyright laws and is not for resale in any manner.

## PUBLICATION ORDERING INFORMATION

### LITERATURE FULFILLMENT:

Email Requests to: [orderlit@onsemi.com](mailto:orderlit@onsemi.com)

**onsemi Website:** [www.onsemi.com](http://www.onsemi.com)

### TECHNICAL SUPPORT

**North American Technical Support:**  
Voice Mail: 1 800-282-9855 Toll Free USA/Canada  
Phone: 011 421 33 790 2910

**Europe, Middle East and Africa Technical Support:**

Phone: 00421 33 790 2910

For additional information, please contact your local Sales Representative