

**PCN# : P242A**  
**Issue Date : May. 16, 2012**

**DESIGN/PROCESS CHANGE NOTIFICATION**

This is to inform you that a change is being made to the products listed below.

Unless otherwise indicated in the details of this notification, the identified change will have no impact on product quality, reliability, electrical, visual or mechanical performance and affected products will remain fully compliant to all published specifications. Products incorporating this change may be shipped interchangeably with existing unchanged products.

This change is planned to take effect in 90 calendar days from the date of this notification. Please work with your local Fairchild Sales Representative to manage your inventory of unchanged product if your evaluation of this change will require more than 90 calendar days.

Please contact your local Customer Quality Engineer within 30 days of receipt of this notification if you require any additional data or samples. Alternatively, you may send an email request for data, samples or other information to [PCNSupport@fairchildsemi.com](mailto:PCNSupport@fairchildsemi.com).

**Implementation of change:**

Expected First Shipment Date for Changed Product : Aug. 14, 2012

Expected First Date Code of Changed Product :1241

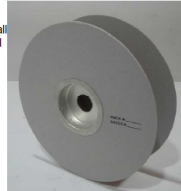
Description of Change (From) :  
Light gray-white cardboard + iron cap

Picture

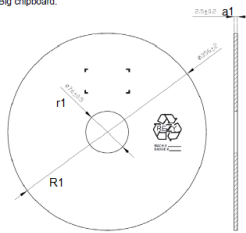
Big Reel



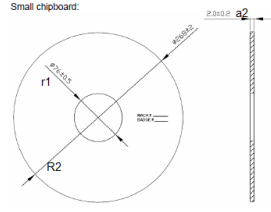
Small Reel



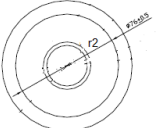
Big chipboard:



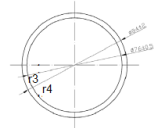
Small chipboard:



Iron cap:



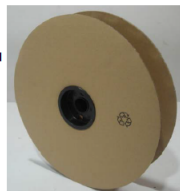
Paper core:



Size Comparison Table (mm)	
r1	76±0.5
r2	84±2
r3	76 ± 0.5
r4	84 ± 2
R1	356±2
R2	268±2
a1	2.5±0.2
a2	2.0±0.2

Description of Change (To) :  
Kraft brown cardboard + black plastic cap

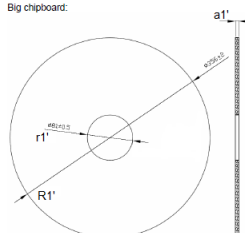
Big Reel



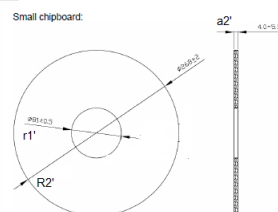
Small Reel



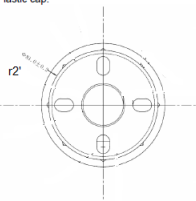
Big chipboard:



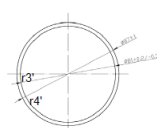
Small chipboard:



Plastic cap:



Paper core:



Size Comparison Table (mm)	
r1'	81±0.5
r2'	81±0.2
r3'	81±0.2/-0.3
r4'	87 ± 1
R1'	356±2
R2'	268±2
a1'	4.0' 5.5
a2'	4.0' 5.5

Reason for Change:

To standardize the packing materials of reeling products.

All FSC products of axial lead glass diodes(DO35&DO41) will be affected

**Affected Product(s):**

1MD2_FDH3369C	1N3064TR	1N3070TR
1N3595TR	1N4148TR	1N4148_T50R
1N4149TR	1N4448TR	1N4454TR
1N456ATR	1N457ATR	1N457TR
1N458ATR	1N459ATR	1N459TR
1N459_T50R	1N4728ATR	1N4730ATR
1N4731ATR	1N4732ATR	1N4733ATR
1N4733A_T50R	1N4734ATR	1N4734A_T50R
1N4735ATR	1N4735A_T50R	1N4736ATR
1N4736A_T50R	1N4737ATR	1N4738ATR
1N4738A_T50R	1N4739ATR	1N4740ATR
1N4741ATR	1N4742ATR	1N4743ATR
1N4743A_T50R	1N4744ATR	1N4744A_T50R
1N4745ATR	1N4746ATR	1N4747ATR
1N4748ATR	1N4749ATR	1N4749A_T50R
1N4750ATR	1N4751ATR	1N4752ATR
1N485BTR	1N5226BTR	1N5227BTR
1N5228BTR	1N5229BTR	1N5230BTR
1N5231BTR	1N5231CTR	1N5232BTR
1N5233BTR	1N5234BTR	1N5234CTR
1N5235BTR	1N5236BTR	1N5237BTR
1N5239BTR	1N5240BTR	1N5241BTR
1N5242BTR	1N5243BTR	1N5244BTR
1N5245BTR	1N5246BTR	1N5247BTR
1N5248BTR	1N5249BTR	1N5250BTR
1N5251BTR	1N5252BTR	1N5253BTR
1N5254BTR	1N5256BTR	1N5257BTR
1N5263B_T50R	1N5282TR	1N914ATR
1N914BTR	1N914TR	BAV19TR
BAV21TR	BAV21_T50R	BAW76TR
BAX16TR	BAY72TR	BZX79C15_T50R
BZX79C5V6TR	BZX79C6V2_T50R	BZX85C10TR5K
BZX85C10_T50R	BZX85C11TR5K	BZX85C12TR5K
BZX85C12_T50R	BZX85C13TR5K	BZX85C15TR5K
BZX85C15_T50R	BZX85C16TR5K	BZX85C18TR5K
BZX85C18_T50R	BZX85C24_T50R	BZX85C36_T50R
BZX85C5V1TR5K	BZX85C5V6_T50R	BZX85C7V5TR5K
D3D7_FDH6308C	FDH300ATR	FDH300TR
FDH333TR	FDH400TR	FDH444TR

## P242A Test Results Data:

ESD	The SR of current cardboard is $7.36 \times 10^8$ ohms/sq while the SR of new cardboard is $1.46 \times 10^9$ ohms/sq. The tribocharge test @50% RH is <100v for both current and new cardboard. Both current and new cardboard meet ESD related requirement.
-----	--

Paper Core		Outside Diameter	Inside Diameter	Height
Dimensions (mm)	Min	86.26	80.90	75.05
	Max	86.93	81.17	75.50
	Mean	86.56	81.05	75.40
	Stdev	0.16	0.07	0.09

Small Chipboard		Outside Diameter	Inside Diameter	Thickness
Dimensions (mm)	Min	267.00	80.61	4.61
	Max	269.00	81.31	5.20
	Mean	267.95	80.97	4.96
	Stdev	0.79	0.20	0.18

Big Chipboard		Outside Diameter	Inside Diameter	Thickness
Dimensions (mm)	Min	355.00	80.63	4.55
	Max	358.00	81.22	5.27
	Mean	356.60	80.94	4.95
	Stdev	0.70	0.18	0.19

Plastic Cap	Outside Diameter 1	Outside Diameter 2	Inside Diameter 1	Inside Diameter 2	Inside Diameter 3	Height 1	Height 2	Thickness
Dimensions (mm)	91.29	80.85	30.16	9.31	76.01	21.83	6.60	1.97
	91.85	81.15	30.20	10.00	76.43	22.25	6.99	2.19
	91.61	81.01	30.18	9.62	76.22	22.01	6.82	2.06
	0.18	0.09	0.01	0.16	0.12	0.10	0.12	0.06

Date	Test item	Test condition	No. of Tests	Device type	Sample Size	Failures
9/30/2010	Hot test	Put the units into oven for 1 hour with temp 50°C	6	1N4148TR, 1N5240BTR	1 reel	0/6
9/30/2010	Cold test	Put the units into icebox for 1 hour with temp -5°C	6	1N4148TR, 1N5240BTR	1 reel	0/6
9/30/2010	Visual Packing Inspection	Visual Packing Inspection	10	1N4148TR, 1N5240BTR	1 reel	0/10
4/28/2011	Fall off	Raise a full reel combination 1 meter from the ground and keep parallel condition, then let the reel combination fall to ground.	3	1N4148TR	1 reel	0/3
2/2/2012	Face drop	A free-fall drop with the landing face of the package parallel to the floor. (The dimensions of the sample: length×width×height =36.5cm×36.5cm×16.5cm)	3	1N4148TR	2 reels	0/3
2/2/2012	Edge drop	A free-fall drop with the centre of gravity of the package aligned on the vertical line of the landing edge of the package. (The dimensions of the sample:length×width×height =36.5cm×36.5cm×16.5cm)	3	1N4148TR	2 reels	0/3
2/2/2012	Corner drop	A free-fall drop with the centre of gravity of the package aligned on the vertical line of the landing corner of the package. (The dimensions of the sample: length×width×height =36.5cm×36.5cm×16.5cm)	3	1N4148TR	2 reels	0/3