



System Solution Guide - Preview

# Solid-State Circuit Breaker



onsemi.com



# Table of Contents

[Get Latest Version](#)

## Overview

Application

03

## System Implementation

Market Information & Trends

04

05

## Solution Overview

Solid-State Circuit Breaker Block Diagram

06

Solid-State Switches

07

Silicon Carbide JFETs

08

SiC JFETs Characteristics and Advantages

09

onsemi EliteSiC JFETs

10

onsemi SiC Combo JFETs

11

onsemi SiC JFET Calculator and Simulator

12

onsemi EliteSiC MOSFETs

13

Gate Driver

14

Temperature Sensing

16

Current sensing

17

Ground Fault Circuit Interrupter

18

Wireless Communication

18

## Recommended Products

19

## Complementary Products

21

## Development Tools and Resources

22

onsemi™

onsemi  
System Solution Guide  
Solid-State Circuit  
Breaker

Register now to unlock all System Solution Guides



1



2



3



4



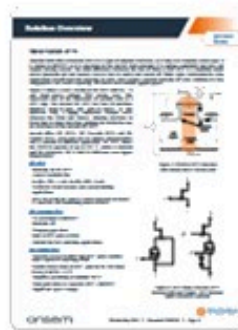
5



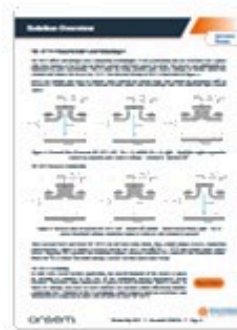
6



7



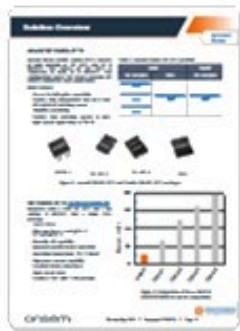
8



9



10



11



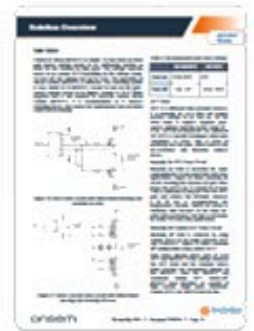
12



13



14

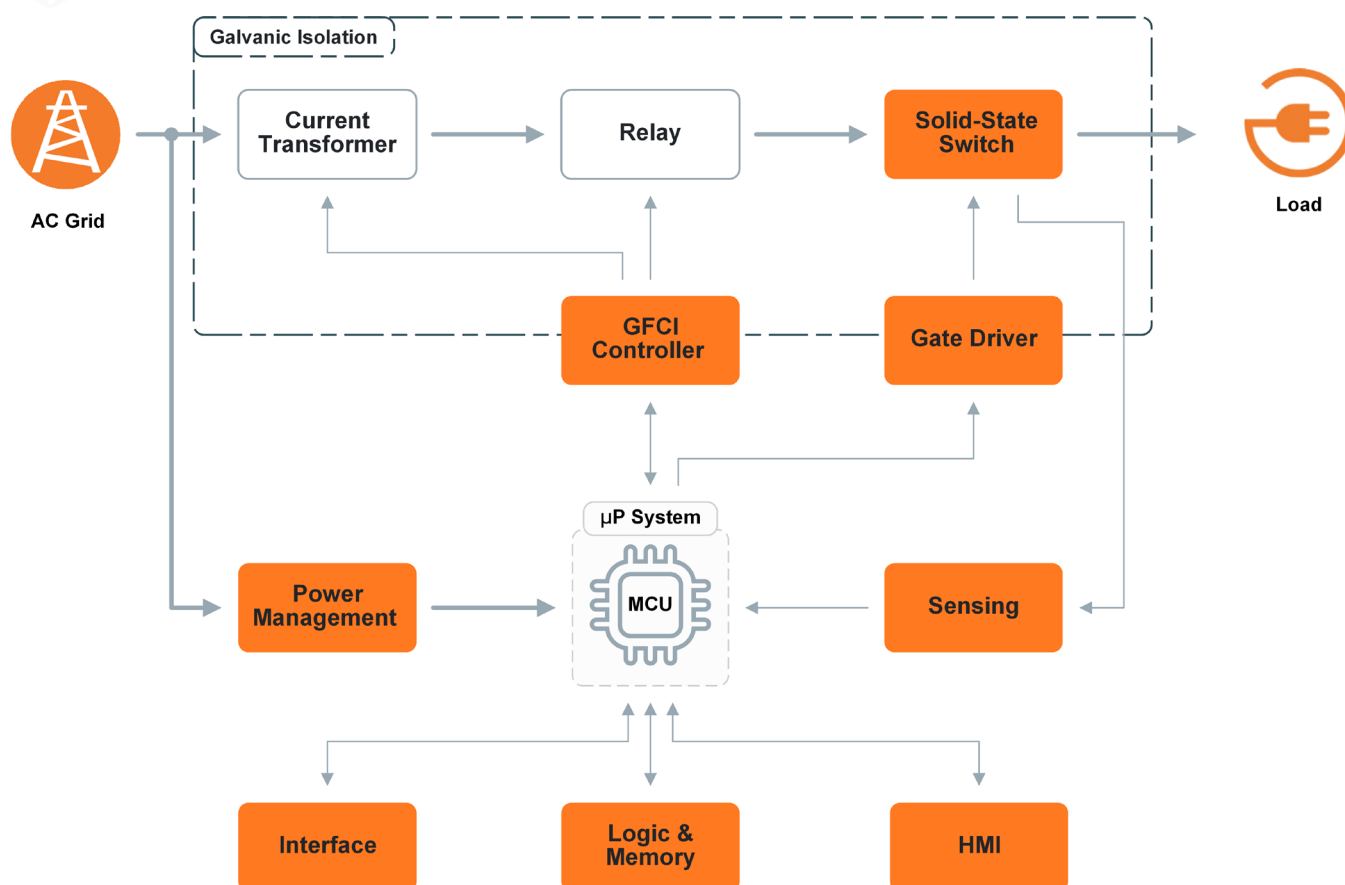


15



**Get Latest Version**

The block diagram below illustrates a solid-state circuit breaker solution featuring recommended products from **onsemi**. The most important building block is the switch which replaces traditional electro-mechanical relays. The Gate Driver controls the switch, and the Interface allows it to communicate with the device. Another important part is Sensing which includes both current and temperature sensing. For additional functionality, GFCI can be incorporated. Other components, including power management, logic, memory and many more, can be sourced from **onsemi's** comprehensive range of solutions.



## System Solution Guide - Preview

## Silicon Carbide JFETs

Junction field effect transistor (JFET) is a type of unipolar transistor, so it only uses majority carrier type. It is similar to MOSFET as it is operated on the electric field principle, it is voltage controlled and does not require biasing current. The main difference between the two of them is that JFET is a depletion-mode device (normally on) and requires reverse bias to switch and remain off. While some semiconductor-relay applications benefit from this normally-on state, most require a default normally-off state. Addition of a few components can create a normally-off switch even without applied power.

Figure 3 shows a cross-section of SiC JFET with  $V_{GS} = 0$  and drain-source voltage  $V_{DS}$  nearly zero. This represents one of the thousands of parallel cells in a JFET chip. The **onsemi** SiC JFET has two PN junctions (diodes): drain-to-gate and gate-to-source. In this unbiased state, a highly conductive channel exists between the Drain and Source, allowing electrons to freely flow in either direction, yielding the distinctive low on-resistance of the **onsemi** SiC JFET.

**onsemi** offers SiC JFETs, SiC Cascode JFETs and SiC Combo JFETs, each type has its unique characteristics and is suitable to different application. SiC JFET allows the SSCB to operate at up to 175 °C, which is material limit for enclosure; SiC is able to withstand even higher temperatures.

### SiC JFET

- Normally-on SiC JFET
- Lowest available  $R_{DS}$
- $R_{DS}(V_{GS} \text{ 2V}) = 7 \text{ m}\Omega$ ,  $R_{DS}(V_{GS} \text{ 0V}) = 8 \text{ m}\Omega$
- Useful for circuit breaker and current limiting applications
- JFET  $V_{GS}$  in the on-state is a direct measure of device  $T_J$ , ideal for self-monitoring power devices

### SiC Cascode JFET

- Co-packaged Si MOSFET
- Normally-off
- Standard gate drive
- Built-in JFET gate resistor
- Suitable for fast switching applications

### SiC Combo JFET

- Separate access to MOS and JFET gates enables more control of switching  $dV/dt$
- Enables direct drive of JFET gate for 10-15% lower  $R_{DS(ON)}$  at  $V_{GS} = +2 \text{ V}$
- Simplifies paralleling of multiple JFETs
- Same gate drive as separate JFET + MOSFET
- Significant space savings

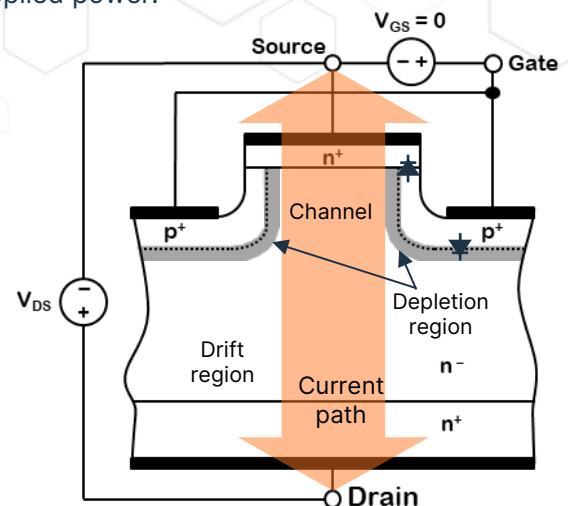


Figure 3: Vertical JFET structure with shown direct current path

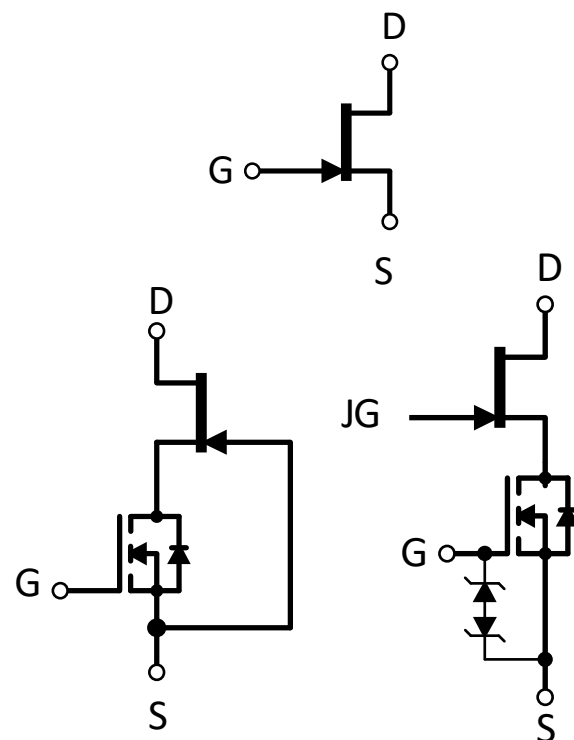


Figure 4: JFET (top), Cascode JFET (bottom left) and Combo-JFET (bottom right) schematic symbols



# Product Value Propositions

Get Latest  
Version

## onsemi EliteSiC Combo JFETs

### SiC Combo JFETs [UG4SC075005L8S](#)

Integrates both a 750V SiC JFET and a low voltage Si MOSFET into a single TOLL package

- 750 V, 120 A
- Ultra-low  $R_{DS(on)}$ : 5 m $\Omega$  @25 °C, 12.2 m $\Omega$  @175 °C
- Normally-off capability
- Improved parallel device operation
- Operating temperature: 175 °C (max)
- High pulse current capability
- Excellent device robustness
- Short circuit rated
- Leadless TOLL (MO-229) package

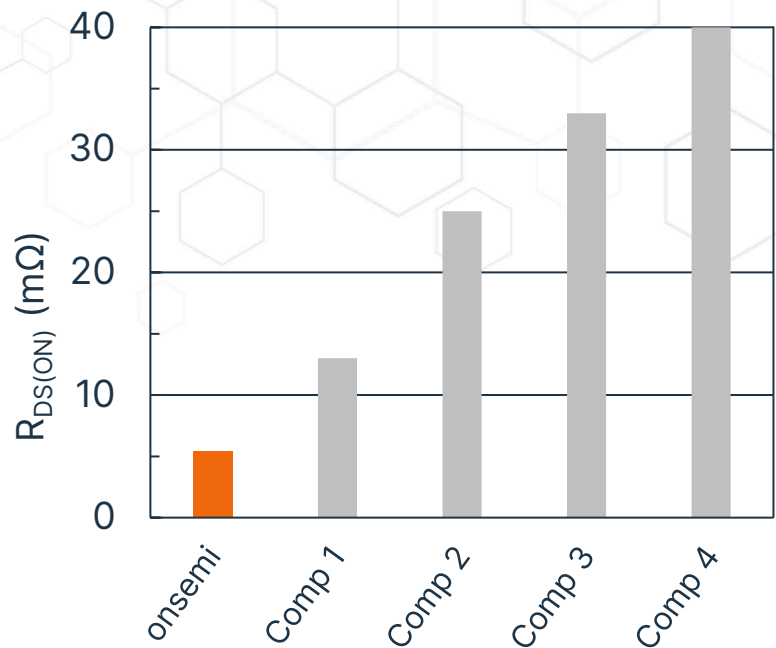


Figure 9: Comparison of  $R_{DS(on)}$  (m $\Omega$ ) of UG4SC075005L8S and its competition

## Combo JFET Evaluation Board

The evaluation board demonstrates the design of solid-state circuit breaker with onsemi Combo JFET device [UG4SC075005L8S](#).

SiC Combo JFETs are composite devices consisting of a low-voltage Si MOSFET and a high-voltage SiC normally on JFET. Both gates of SiC JFET and silicon MOSFET are accessible. Compared with standard cascode structure, the SiC Combo JFET has advantages of lower  $R_{DS(on)}$  by over-drive, full switching speed control and junction temperature sensing.

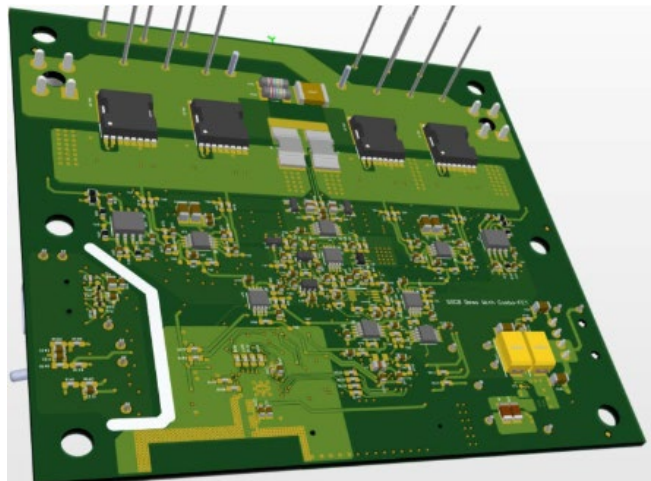
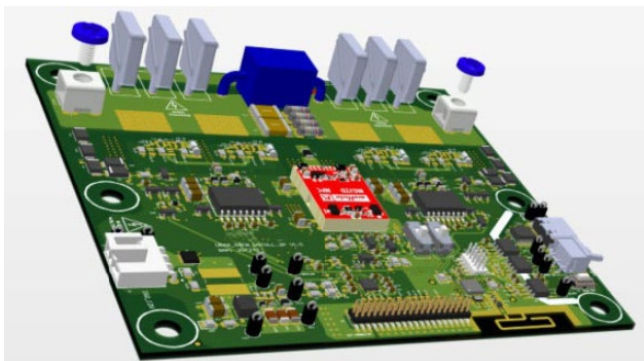


Figure 10: Combo JFET Evaluation Board top and bottom sides


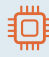

# Solid-State Circuit Breaker

Get Latest  
Version

# onsemi™

## Intelligent Technology. Better Future.

**Register now to unlock all System Solution Guides and get additional exclusive benefits!**

-  Join the conversation on community forum.
-  Utilize Elite Power Simulator & other developer tools.
-  Watch exclusive webinars and seminars.

**Open full System Solution Guide**



onsemi, the onsemi logo, and other names, marks, and brands are registered and/or common law trademarks of Semiconductor Components Industries, LLC dba "onsemi" or its affiliates and/or subsidiaries in the United States and/or other countries. onsemi owns the rights to a number of patents, trademarks, copyrights, trade secrets, and other intellectual property. A listing of onsemi's product/patent coverage may be accessed at [www.onsemi.com/site/pdf/Patent-Marking.pdf](http://www.onsemi.com/site/pdf/Patent-Marking.pdf). onsemi reserves the right to make changes at any time to any products or information herein, without notice. The information herein is provided "as-is" and onsemi makes no warranty, representation or guarantee regarding the accuracy of the information, product features, availability, functionality, or suitability of its products for any particular purpose, nor does onsemi assume any liability arising out of the application or use of any product or circuit, and specifically disclaims any and all liability, including without limitation special, consequential or incidental damages. Buyer is responsible for its products and applications using onsemi products, including compliance with all laws, regulations and safety requirements or standards, regardless of any support or applications information provided by onsemi. "Typical" parameters which may be provided in onsemi data sheets and/or specifications can and do vary in different applications and actual performance may vary over time. All operating parameters, including "Typicals" must be validated for each customer application by customer's technical experts. onsemi does not convey any license under any of its intellectual property rights nor the rights of others. onsemi products are not designed, intended, or authorized for use as a critical component in life support systems or any FDA Class 3 medical devices or medical devices with a same or similar classification in a foreign jurisdiction or any devices intended for implantation in the human body. Should Buyer purchase or use onsemi products for any such unintended or unauthorized application, Buyer shall indemnify and hold onsemi and its officers, employees, subsidiaries, affiliates, and distributors harmless against all claims, costs, damages, and expenses, and reasonable attorney fees arising out of, directly or indirectly, any claim of personal injury or death associated with such unintended or unauthorized use, even if such claim alleges that onsemi was negligent regarding the design or manufacture of the part. onsemi is an Equal Opportunity/Affirmative Action Employer. This literature is subject to all applicable copyright laws and is not for resale in any manner.