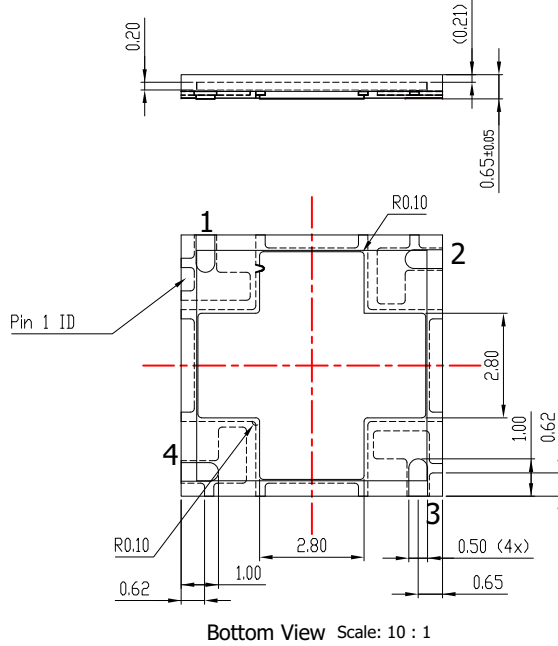
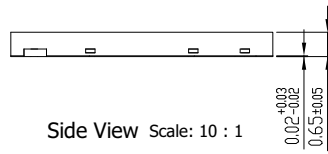
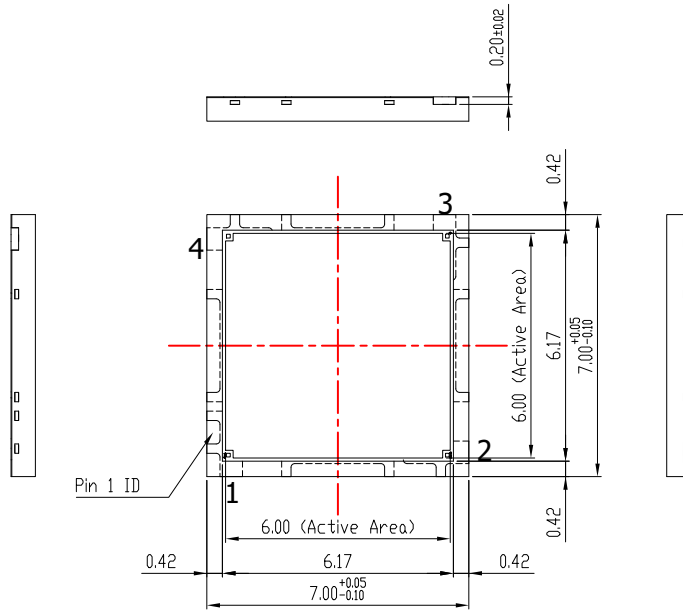


CWDFN4 7x7, 4.5P
CASE 512AG
ISSUE O

DATE 31 JUL 2018

Pin Assignment	
Pin #	Description
1	P-Anode
2	F-Fast Output
3	N-Cathode
4	No Connect

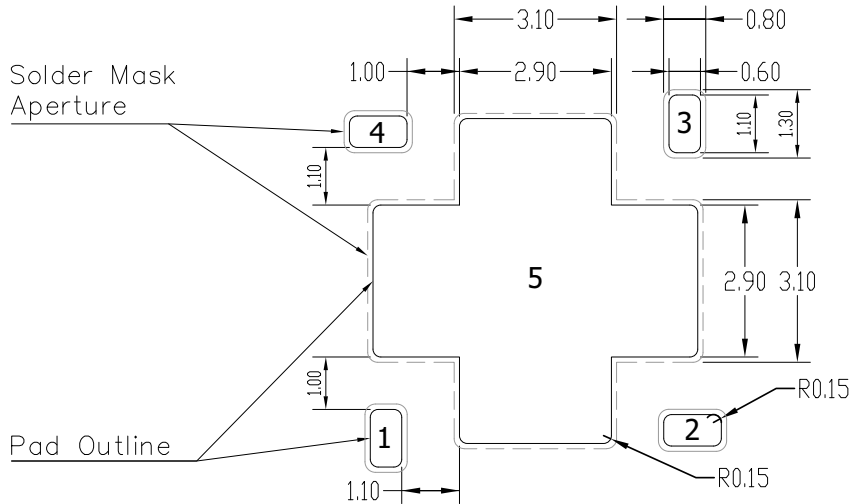


DOCUMENT NUMBER:	98AON94885G	Electronic versions are uncontrolled except when accessed directly from the Document Repository. Printed versions are uncontrolled except when stamped "CONTROLLED COPY" in red.
DESCRIPTION:	CWDFN4 7x7, 4.5P	PAGE 1 OF 2

onsemi and ONSEMI are trademarks of Semiconductor Components Industries, LLC dba onsemi or its subsidiaries in the United States and/or other countries. onsemi reserves the right to make changes without further notice to any products herein. onsemi makes no warranty, representation or guarantee regarding the suitability of its products for any particular purpose, nor does onsemi assume any liability arising out of the application or use of any product or circuit, and specifically disclaims any and all liability, including without limitation special, consequential or incidental damages. onsemi does not convey any license under its patent rights nor the rights of others.

CWDFN4 7x7, 4.5P
CASE 512AG
ISSUE 0

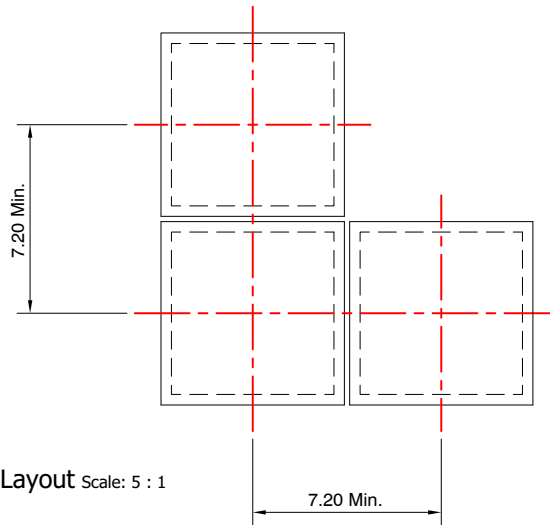
DATE 31 JUL 2018



Recommended PCB Solder Footprint

Scale: 10 : 1

NOTE: No Connect (NC) pin 4 should be soldered to PCB, this pin can be connected to ground but it can also be left floating without affecting the dark noise. Recommend that NC pin 5 paddle is not soldered to the PCB and left floating to achieve optimal soldering on pins 1 to 4. Care must be taken to ensure that no electrical contacts on the PCB, such as vias, short out on the paddle if using the area underneath for routing. If it is desired to solder pin 5 to the PCB, for example to heatsink or ground the paddle, please consult your contract manufacture for their solder recommendations based on their equipment and capabilities.



Tiling Layout Scale: 5 : 1

NOTE: Alignment and placement tolerances depend on the accuracy of the equipment used in the assembly process.

DOCUMENT NUMBER:	98AON94885G	Electronic versions are uncontrolled except when accessed directly from the Document Repository. Printed versions are uncontrolled except when stamped "CONTROLLED COPY" in red.
DESCRIPTION:	CWDFN4 7x7, 4.5P	PAGE 2 OF 2

onsemi and **ONSEMI** are trademarks of Semiconductor Components Industries, LLC dba **onsemi** or its subsidiaries in the United States and/or other countries. **onsemi** reserves the right to make changes without further notice to any products herein. **onsemi** makes no warranty, representation or guarantee regarding the suitability of its products for any particular purpose, nor does **onsemi** assume any liability arising out of the application or use of any product or circuit, and specifically disclaims any and all liability, including without limitation special, consequential or incidental damages. **onsemi** does not convey any license under its patent rights nor the rights of others.