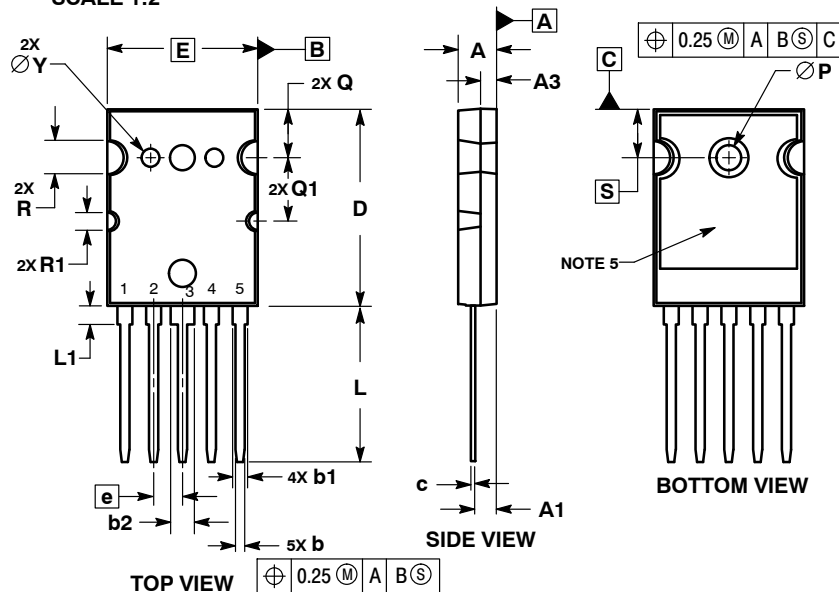


TO-264, 5-LEAD
CASE 340AA
ISSUE A

DATE 04 FEB 2013

SCALE 1:2



NOTES:

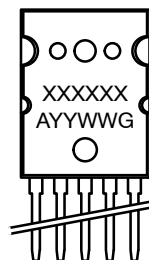
1. DIMENSIONING AND TOLERANCING PER ASME Y14.5M, 1994.
2. CONTROLLING DIMENSION: MILLIMETERS.
3. DIMENSION b APPLIES BETWEEN 2.50 AND 3.81 FROM THE LEAD TIP.
4. DIMENSION S APPLIES TO THE MOUNTING HOLE (ØP). DIMENSION Q APPLIES TO THE NOTCHES (2X R).
5. THERMAL PAD SIZE AND SHAPE MAY VARY WITHIN THE AREA DEFINED BY DIMENSIONS D AND E.

MILLIMETERS		
DIM	MIN	MAX
A	4.70	5.31
A1	2.50	3.10
A3	2.00 REF	
b	1.10	1.50
b1	2.00 REF	
b2	3.00 REF	
c	0.43	0.74
D	25.58	26.59
E	19.30	20.29
e	3.81 BSC	
L	19.79	21.39
L1	2.10	2.30
P	3.00	3.51
Q	5.80	6.20
Q1	8.80	9.20
R	4.00 REF	
R1	2.00 REF	
S	9.00 BSC	
Y	1.80 REF	

STYLE 1:

- PIN 1. BASE
2. EMITTER
3. COLLECTOR
4. ANODE
5. CATHODE

GENERIC
MARKING DIAGRAM*



XXXXXX = Specific Device Code
A = Assembly Location
YY = Year
WW = Work Week
G = Pb-Free Package

*This information is generic. Please refer to device data sheet for actual part marking. Pb-Free indicator, "G" or microdot "▪", may or may not be present.

DOCUMENT NUMBER:	98AON19871D	Electronic versions are uncontrolled except when accessed directly from the Document Repository. Printed versions are uncontrolled except when stamped "CONTROLLED COPY" in red.
DESCRIPTION:	TO-264, 5-LEAD	PAGE 1 OF 1

onsemi and onsemi are trademarks of Semiconductor Components Industries, LLC dba onsemi or its subsidiaries in the United States and/or other countries. onsemi reserves the right to make changes without further notice to any products herein. onsemi makes no warranty, representation or guarantee regarding the suitability of its products for any particular purpose, nor does onsemi assume any liability arising out of the application or use of any product or circuit, and specifically disclaims any and all liability, including without limitation special, consequential or incidental damages. onsemi does not convey any license under its patent rights nor the rights of others.