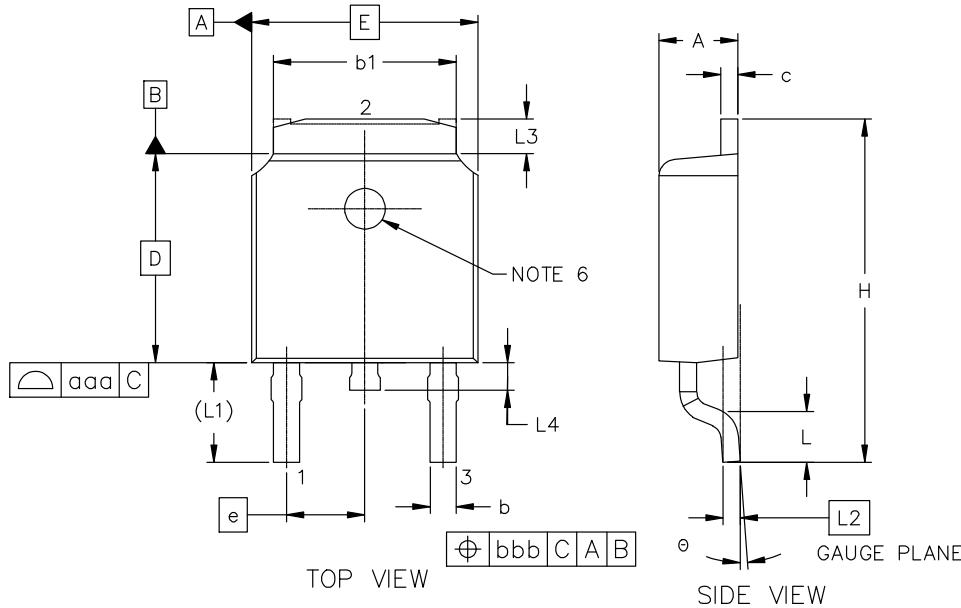
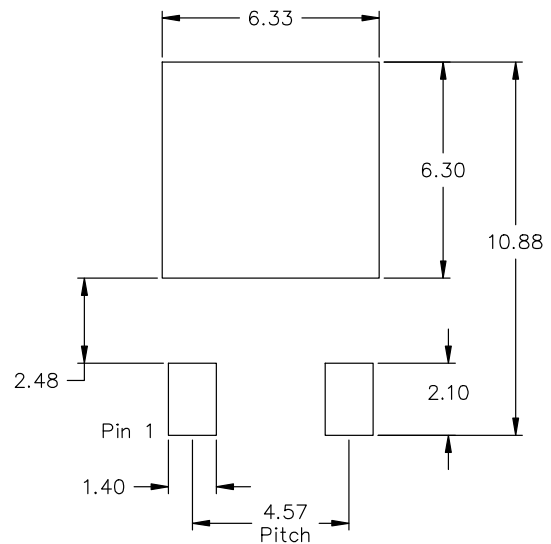
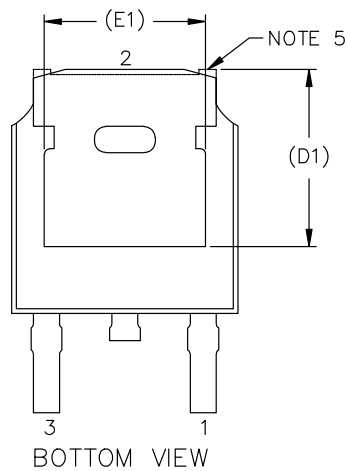
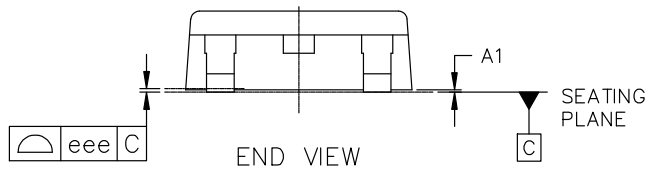


PDSO-E3 6.10x6.60x2.30, 2.28P
CASE 209AA
ISSUE O

DATE 04 MAY 2026



| MILLIMETERS | | | |
|---------------------------|-----------|------|-------|
| DIM | MIN | NOM | MAX |
| A | 2.20 | 2.30 | 2.40 |
| A1 | 0.00 | 0.07 | 0.13 |
| b | 0.63 | 0.76 | 0.90 |
| b1 | 5.10 | 5.33 | 5.46 |
| c | 0.43 | 0.53 | 0.61 |
| D | 6.10 BSC | | |
| D1 | 5.30 REF | | |
| E | 6.60 BSC | | |
| E1 | 4.83 REF | | |
| e | 2.286 BSC | | |
| H | 9.40 | 9.95 | 10.50 |
| L | 1.38 | 1.50 | 1.75 |
| L1 | 2.90 REF | | |
| L2 | 0.50 BSC | | |
| L3 | 0.88 | 1.08 | 1.28 |
| L4 | 0.50 | 0.75 | 1.00 |
| θ | 0° | 5° | 10° |
| TOLERANCE FORM & POSITION | | | |
| aaa | 0.15 | | |
| bbb | 0.20 | | |
| eee | 0.10 | | |



RECOMMENDED MOUNTING FOOTPRINT

*For additional information on our Pb-Free strategy and soldering details, please download the onsemi Soldering and Mounting Techniques Reference Manual, SOLDERRM/D.

NOTES:

1. DIMENSIONING AND TOLERANCING AS PER ASME Y14.5M, 2018.
2. CONTROLLING DIMENSION: MILLIMETERS.
3. DIMENSIONS DO NOT INCLUDE MOLD PROTRUSION.
4. PACKAGE OUTLINE EXCLUSIVE OF METAL BURR DIMENSIONS.
5. SUPPLIER DEPENDENT MOLD LOCKING HOLES OR CHAMFERED CORNERS OR EDGE PROTRUSION.
6. MOLD EJECTION PIN MARK IS OPTIONAL.

| | | |
|-------------------------|--------------------------------------|--|
| DOCUMENT NUMBER: | 98AON76042H | Electronic versions are uncontrolled except when accessed directly from the Document Repository. Printed versions are uncontrolled except when stamped "CONTROLLED COPY" in red. |
| DESCRIPTION: | PDSO-E3 6.10x6.60x2.30, 2.28P | PAGE 1 OF 2 |

onsemi and ONSEMI are trademarks of Semiconductor Components Industries, LLC dba onsemi or its subsidiaries in the United States and/or other countries. onsemi reserves the right to make changes without further notice to any products herein. onsemi makes no warranty, representation or guarantee regarding the suitability of its products for any particular purpose, nor does onsemi assume any liability arising out of the application or use of any product or circuit, and specifically disclaims any and all liability, including without limitation special, consequential or incidental damages. onsemi does not convey any license under its patent rights nor the rights of others.

PDSO-E3 6.10x6.60x2.30, 2.28P
CASE 209AA
ISSUE O

DATE 04 MAY 2026

**GENERIC
MARKING DIAGRAM***



XXXX = Specific Device Code
A = Assembly Location
YY = Year
WW = Work Week
ZZ = Assembly Lot Code

*This information is generic. Please refer to device data sheet for actual part marking. Pb-Free indicator, "G" or microdot "▪", may or may not be present. Some products may not follow the Generic Marking.

| | | |
|-------------------------|--------------------------------------|--|
| DOCUMENT NUMBER: | 98AON76042H | Electronic versions are uncontrolled except when accessed directly from the Document Repository. Printed versions are uncontrolled except when stamped "CONTROLLED COPY" in red. |
| DESCRIPTION: | PDSO-E3 6.10x6.60x2.30, 2.28P | PAGE 2 OF 2 |

onsemi and **ONSEMI** are trademarks of Semiconductor Components Industries, LLC dba **onsemi** or its subsidiaries in the United States and/or other countries. **onsemi** reserves the right to make changes without further notice to any products herein. **onsemi** makes no warranty, representation or guarantee regarding the suitability of its products for any particular purpose, nor does **onsemi** assume any liability arising out of the application or use of any product or circuit, and specifically disclaims any and all liability, including without limitation special, consequential or incidental damages. **onsemi** does not convey any license under its patent rights nor the rights of others.