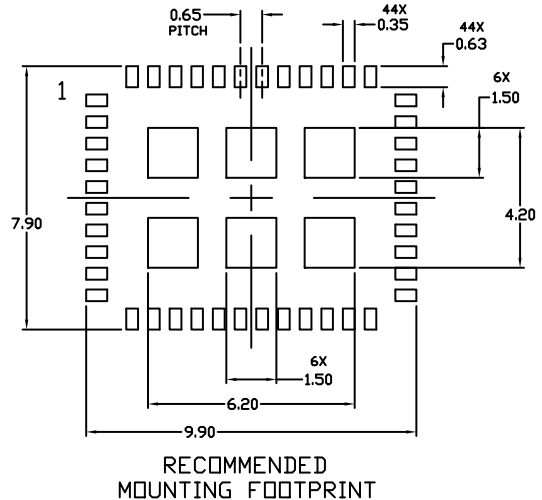
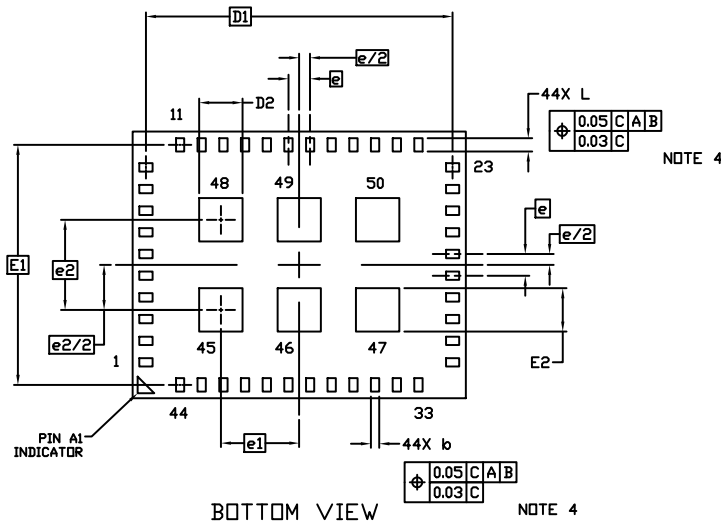
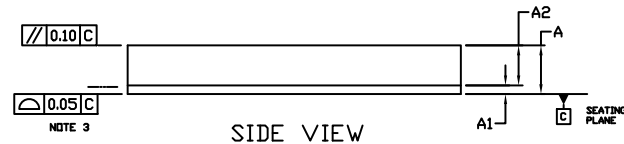
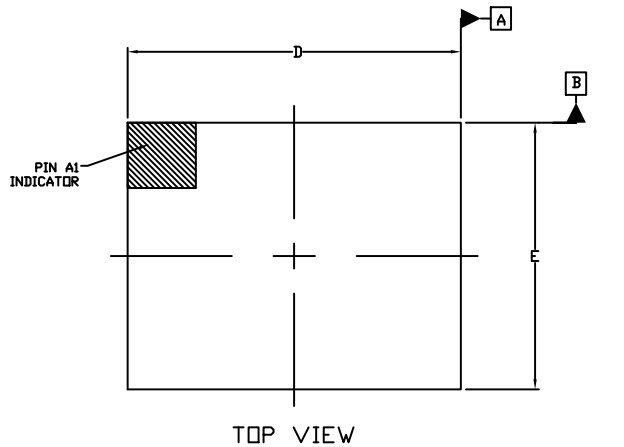


SIP50, 10x8
CASE 127FD
ISSUE O

DATE 18 JAN 2019

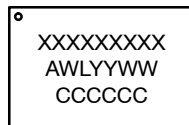


NOTES:

1. DIMENSIONING AND TOLERANCING PER ASME Y14.5M, 1994.
2. CONTROLLING DIMENSION: MILLIMETERS
3. COPLANARITY APPLIES TO THE SPHERICAL CROWNS OF THE PADS.
3. POSITIONAL TOLERANCE APPLIES TO ALL OF THE PADS.

DIM	MILLIMETERS		
	MIN.	NOM.	MAX.
A	1.40	1.46	1.52
A1	0.26 REF		
A2	1.16	1.20	1.24
b	0.20	0.25	0.30
D	9.90	10.00	10.10
D1	9.20 BSC		
D2	1.25	1.30	1.35
E	7.90	8.00	8.10
E1	7.20 BSC		
E2	1.25	1.30	1.35
e	0.65 BSC		
e1	2.35 BSC		
e2	2.70 BSC		
L	0.35	0.40	0.45

GENERIC
MARKING DIAGRAM*



XXX = Specific Device Code
A = Assembly Location
WL = Wafer Lot
YY = Year
WW = Work Week
CCC = Country of Origin

*This information is generic. Please refer to device data sheet for actual part marking. Pb-Free indicator, "G" or microdot "•", may or may not be present. Some products may not follow the Generic Marking.

DOCUMENT NUMBER:	98AON02188H	Electronic versions are uncontrolled except when accessed directly from the Document Repository. Printed versions are uncontrolled except when stamped "CONTROLLED COPY" in red.
DESCRIPTION:	SIP50, 10x8	PAGE 1 OF 1

onsemi and onsemi are trademarks of Semiconductor Components Industries, LLC dba onsemi or its subsidiaries in the United States and/or other countries. onsemi reserves the right to make changes without further notice to any products herein. onsemi makes no warranty, representation or guarantee regarding the suitability of its products for any particular purpose, nor does onsemi assume any liability arising out of the application or use of any product or circuit, and specifically disclaims any and all liability, including without limitation special, consequential or incidental damages. onsemi does not convey any license under its patent rights nor the rights of others.