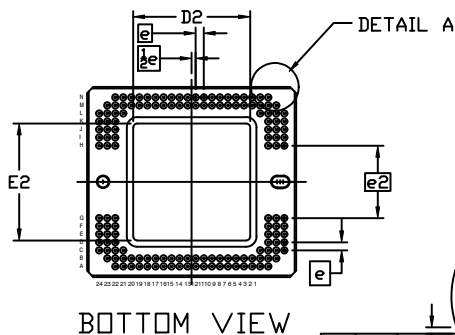
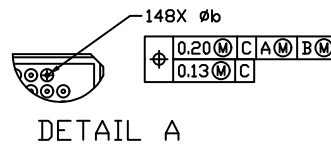
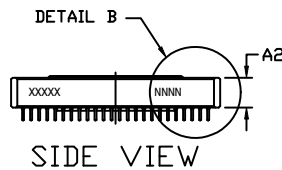
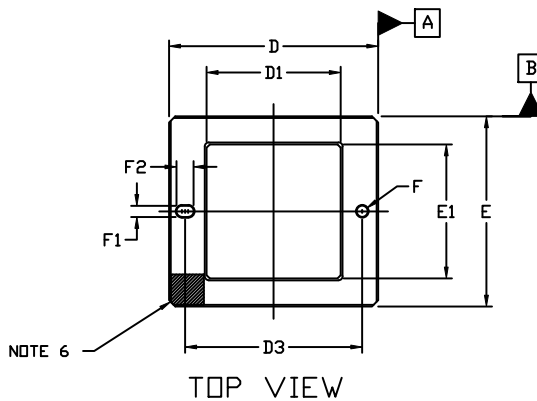


CPGA148, 33x30
CASE 107FK
ISSUE O

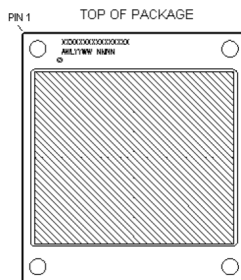
DATE 04 APR 2018

NOTES:

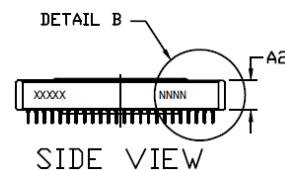
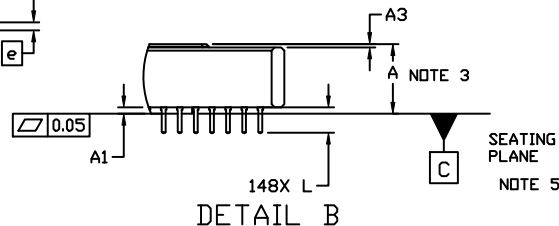
1. DIMENSIONING AND TOLERANCING PER ASME Y14.5M, 1994.
2. CONTROLLING DIMENSION: MILLIMETERS
3. DIMENSION A INCLUDES THE PACKAGE BODY, GLASS, AND HEATSINK.
4. DIMENSIONS D AND E DO NOT INCLUDE PROTRUSIONS. SUCH PROTRUSIONS SHALL NOT EXTEND MORE THAN 0.08 ON ANY SIDE. CORNERS AND EDGES OF THE PACKAGE MAY HAVE CHAMFERS.
5. THE SEATING PLANE IS DEFINED BY THE OUTER HEATSINK SURFACE.
6. PIN A1 IDENTIFICATION WILL BE IN THIS AREA. ID TYPE MAY CONSIST OF NOTCHES, METALLIZED MARKINGS, OR OTHER FEATURES.



GENERIC MARKING DIAGRAM



XXXXX = Specific Device Code
A = Assembly Location
WL = Wafer Lot
YY = Year
WW = Work Week
NNNN = Serial Number



XXXX = Specific Device Code
NNNN = Serial Number

DIM	MILLIMETERS		
	MIN.	NOM.	MAX.
A	5.49 REF		
A1	0.45	0.50	0.55
A2	4.24	4.72	5.20
A3	0.27 REF		
b	0.25	0.30	0.35
D	32.67	33.00	33.33
D1	21.05	21.13	21.21
D2	18.34	18.44	18.54
D3	27.66	27.94	28.22
E	29.70	30.00	30.30
E1	21.05	21.13	21.21
E2	18.34	18.44	18.54
e	1.27 BSC		
e2	11.30	11.43	11.56
F	1.65	1.75	1.85
F1	1.65	1.75	1.85
F2	2.57	2.72	2.87
L	1.80	2.00	2.20

DOCUMENT NUMBER:	98AON85285G	Electronic versions are uncontrolled except when accessed directly from the Document Repository. Printed versions are uncontrolled except when stamped "CONTROLLED COPY" in red.
DESCRIPTION:	CPGA148, 33x30	PAGE 1 OF 1

onsemi and onsemi are trademarks of Semiconductor Components Industries, LLC dba onsemi or its subsidiaries in the United States and/or other countries. onsemi reserves the right to make changes without further notice to any products herein. onsemi makes no warranty, representation or guarantee regarding the suitability of its products for any particular purpose, nor does onsemi assume any liability arising out of the application or use of any product or circuit, and specifically disclaims any and all liability, including without limitation special, consequential or incidental damages. onsemi does not convey any license under its patent rights nor the rights of others.