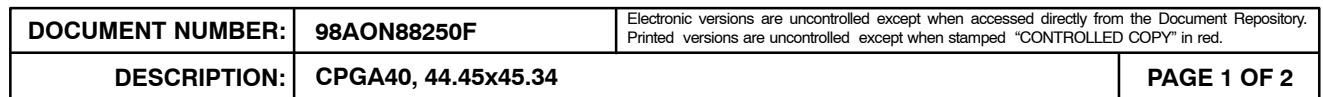


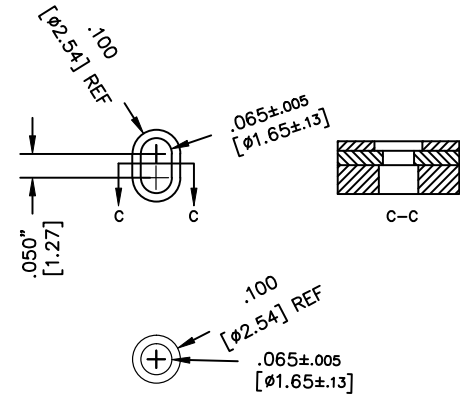
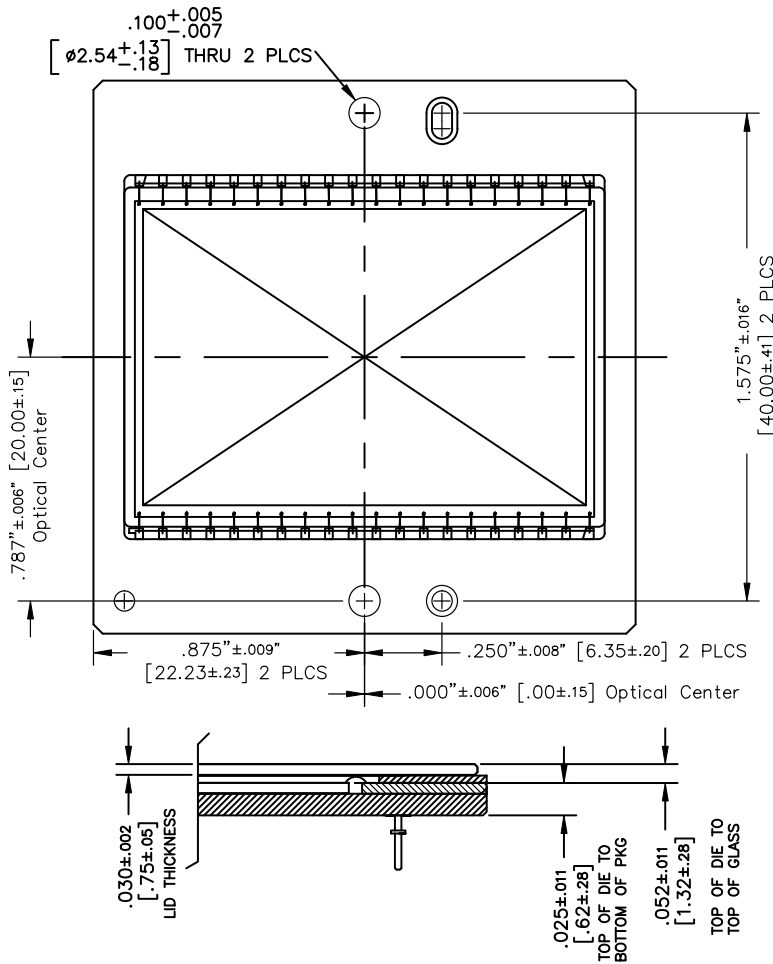
## DATE 30 JUL 2014



[www.onsemi.com](http://www.onsemi.com)

**CPGA40, 44.45x45.34**  
CASE 107EB  
ISSUE O

DATE 30 JUL 2014



- NOTES:
1. OPTICAL CENTER = PACKAGE CENTER
  2. OPTICAL CENTER IS OFFSET FROM CENTER OF DIE BY X=0.000, Y=0.150 MM.
  3. THE CENTER OF THE DIE IS Y=-0.150 MM FROM THE CENTER OF THE PACKAGE.

<b>DOCUMENT NUMBER:</b>	<b>98AON88250F</b>	Electronic versions are uncontrolled except when accessed directly from the Document Repository. Printed versions are uncontrolled except when stamped "CONTROLLED COPY" in red.
<b>DESCRIPTION:</b>	<b>CPGA40, 44.45x45.34</b>	<b>PAGE 2 OF 2</b>

**onsemi** and **onsemi** are trademarks of Semiconductor Components Industries, LLC dba **onsemi** or its subsidiaries in the United States and/or other countries. **onsemi** reserves the right to make changes without further notice to any products herein. **onsemi** makes no warranty, representation or guarantee regarding the suitability of its products for any particular purpose, nor does **onsemi** assume any liability arising out of the application or use of any product or circuit, and specifically disclaims any and all liability, including without limitation special, consequential or incidental damages. **onsemi** does not convey any license under its patent rights nor the rights of others.