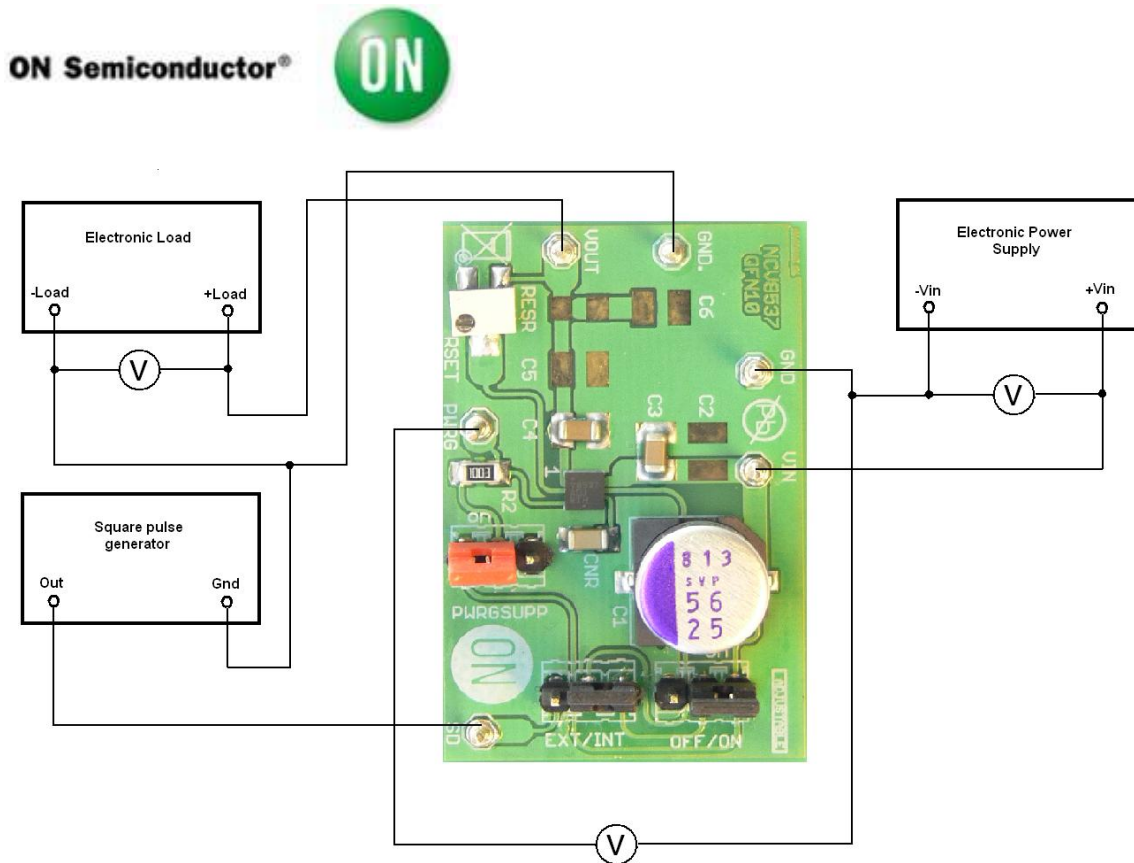


## Test Procedure for NCV8537 Adjustable DFN10 LDO Demoboard



### Test procedure:

1. Check the position of jumper and correct it if necessary.
  - a) **PWRGSUPP** - ON
  - b) **EXT/INT** - INT
  - c) **ON/OFF** - ON
2. Connect the test setup as shown Figure
3. Apply an input voltage **V<sub>in</sub> = 2.9 V**
4. Apply I<sub>out</sub> = 0mA load.
5. Check that V<sub>out</sub> is **2.5 V**. (Set by Rset trimmer)
6. Increase I<sub>out</sub> up to **500 mA**
7. Check the voltage at **PWRG** pin U<sub>pwr</sub> = V<sub>in</sub>
7. Increase V<sub>in</sub> up to **12 V** and decrease the load in accordance with **SOA**
8. Power down the Load
9. Power down the V<sub>cc</sub>
10. End of test