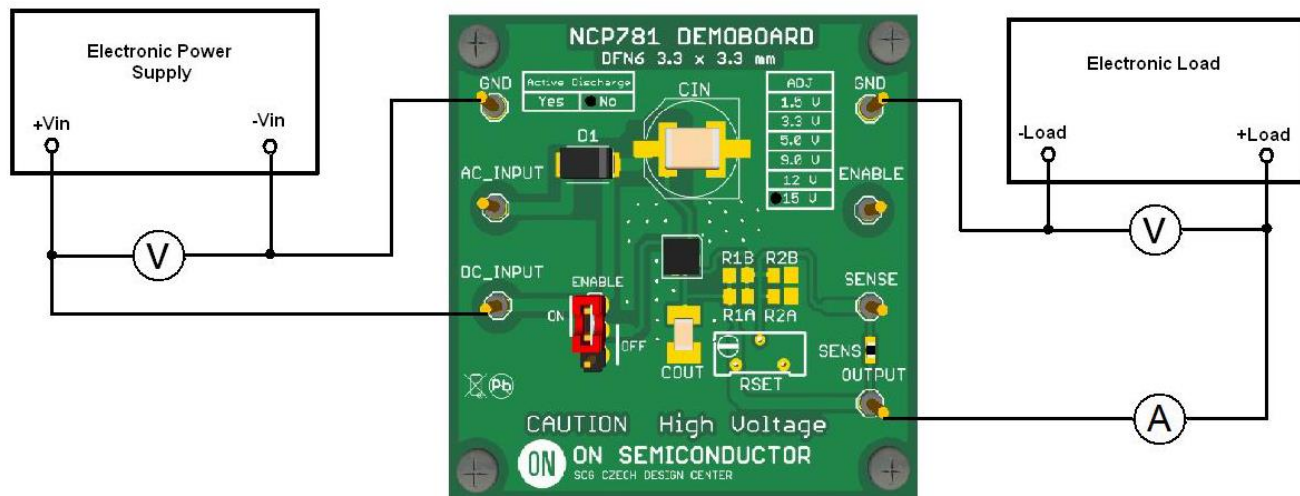




## Test Procedure for the NCP781BMN150TAGEVB Evaluation Board



### Test procedure:

1. Check the position of jumper and correct it if necessary.

#### **ENABLE - ON**

2. Connect the test setup as shown Figure

3. Apply an input voltage **V<sub>in</sub> = 25 V**

4. Apply **I<sub>out</sub> = 0mA** load.

5. Check that V<sub>out</sub> is **V<sub>out</sub> = 15.0 V**. (Set by Rset trimmer if necessary)

6. Increase the Input Voltage to **V<sub>in</sub> = 150 V**

7. Check the Output Voltage, V<sub>out</sub> should be **15.0 V +/- 2.5%**

8. Increase the load up to **I<sub>out</sub> = 1mA (respect SOA limitation)**

9. Check the Output Voltage, V<sub>out</sub> should be **15.0 V +/- 2.5%**

10. Decrease the Input Voltage to **V<sub>in</sub> = 75 V**

11. Increase the load up to **I<sub>out</sub> = 10mA (respect SOA limitation)**

12. Check the Output Voltage, V<sub>out</sub> should be **15.0 V +/- 2.5%**

13. Power down the Electronic Load

14. Power down the Electronic Power Supply

15. End of test