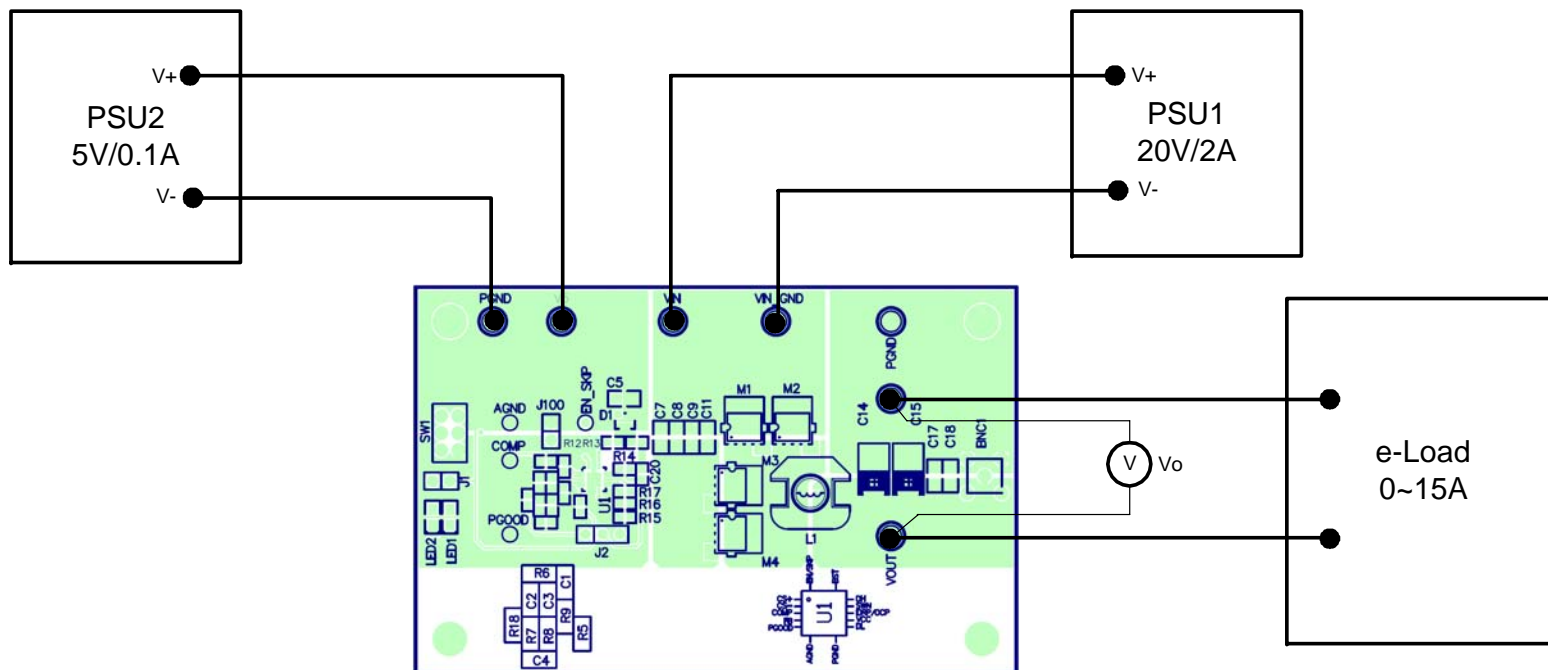
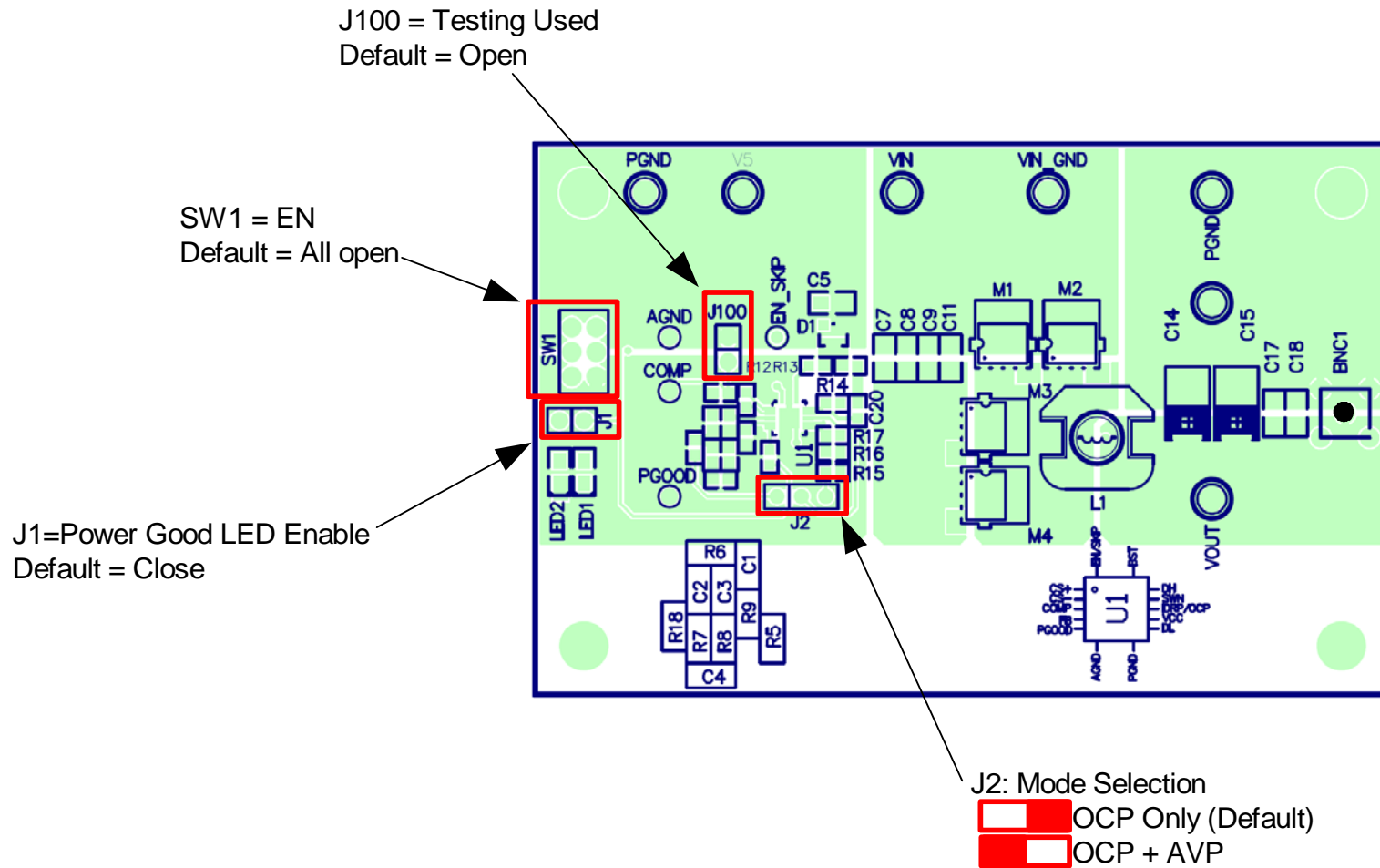


Test Procedure for NCP5217AGEVB Demonstration Board



Equipment Set Up Diagram

Demonstration Board Jumper Location Map



Equipment List

Item	Qty	Description
1	1	Electronic Load. KIKUSUI-PLZ153W or equivalent.
2	2	Power Supply. AGILENT-E3632A or equivalent. (Note: build-in ammeter)
3	1	Digital Multimeter. AGILENT-34401A or equivalent.

Demonstration Board Jumper Setting

Jumper	Status	Description
J1	-	Power good LED enable Default = close Open = power off the LED Close = LED lits when the system is good.
JP2	-	Mode selection Default = see “Demo board jumper location map” diagram
JP100	-	Test jumper Default = open
SW1	-	EN pin Default = all open

Demonstration Board Terminal Pins List

Terminal	Description
VIN	Device input voltage (5-27V)
VIN_GND	Device power ground
V5	Device analog circuit bias (4.5 ~ 5.5V)
PGND	Device power ground

Test Procedures

1. All Jumpers are set as “Default”
2. Set up the demonstration board shown at “Equipment Set Up Diagram”
3. Set PSU1=20V, PSU2=5V. For safety set current limit of PSU1=2A, PSU2=0.1A
4. Measuring results are tabulated in the following table

Note: PSU = Power Supply Unit e-Load = Electronic Load

e-Load	PSU1 Current Consumption	V_o	LED	Comment
0	~0A	1.52-1.54V	LED1 ON	Normal operation
2	0.15-19A	1.52-1.54V	LED1 ON	Normal operation
5	0.38-0.47A	1.52-1.54V	LED1 ON	Normal operation
8	0.62-0.76A	1.52-1.54V	LED1 ON	Normal operation
8→15A	-	V _o →0V	LED2 ON	Over current protection test

Note:

The current consumption of PSU2 should be below 20mA for all tests.