



## Test Procedure for the NB3N1900KMNGEVB Evaluation Board

### Required Equipment:

1. Power supply
2. Oscilloscope
3. Differential Signal Generator

### Test Procedure:

#### Pre-Power-Up

1. Connect power supply cables to VDD, VDDIO and GND banana jacks; (do not turn power on, yet)
2. Connect a signal generator to the SMA connectors for the CLK\_IN & CLK\_IN# inputs.
3. 50- $\Omega$  termination resistors are installed for a signal generator on the board. Set appropriate input signal levels; (HCSL input,  $V_{IL} = 0$  V,  $V_{IH} = 700$  mV, Frequency 100.00 or 133.33 MHz)
4. Ensure the PGD/PDN# pin is in the Low state before power up (PDN#). There is a jumper on pin 6 to easily select between High and Low.
5. The 100M/133# and HBW/LBW# pins need to be hardware selected with jumpers.
6. Connect the DIF\_n/DIF\_n# outputs to the appropriate oscilloscope.

Device Pin Power Supply Connector	Power Supply
VDD, VDDIO	VCC = +3.3 V
GND	0 V

**Table 1: Power Supply Connections**

#### Power -Up Sequence

1. Turn on power supply, 3.3 V (VDD & VDDIO)
2. Move PGD/PDN# jumper from Low to logic High, PGD position
3. Turn on the Differential Clock Signal for the CLK\_IN inputs
4. Monitor DIF\_n/DIF\_n# outputs on oscilloscope

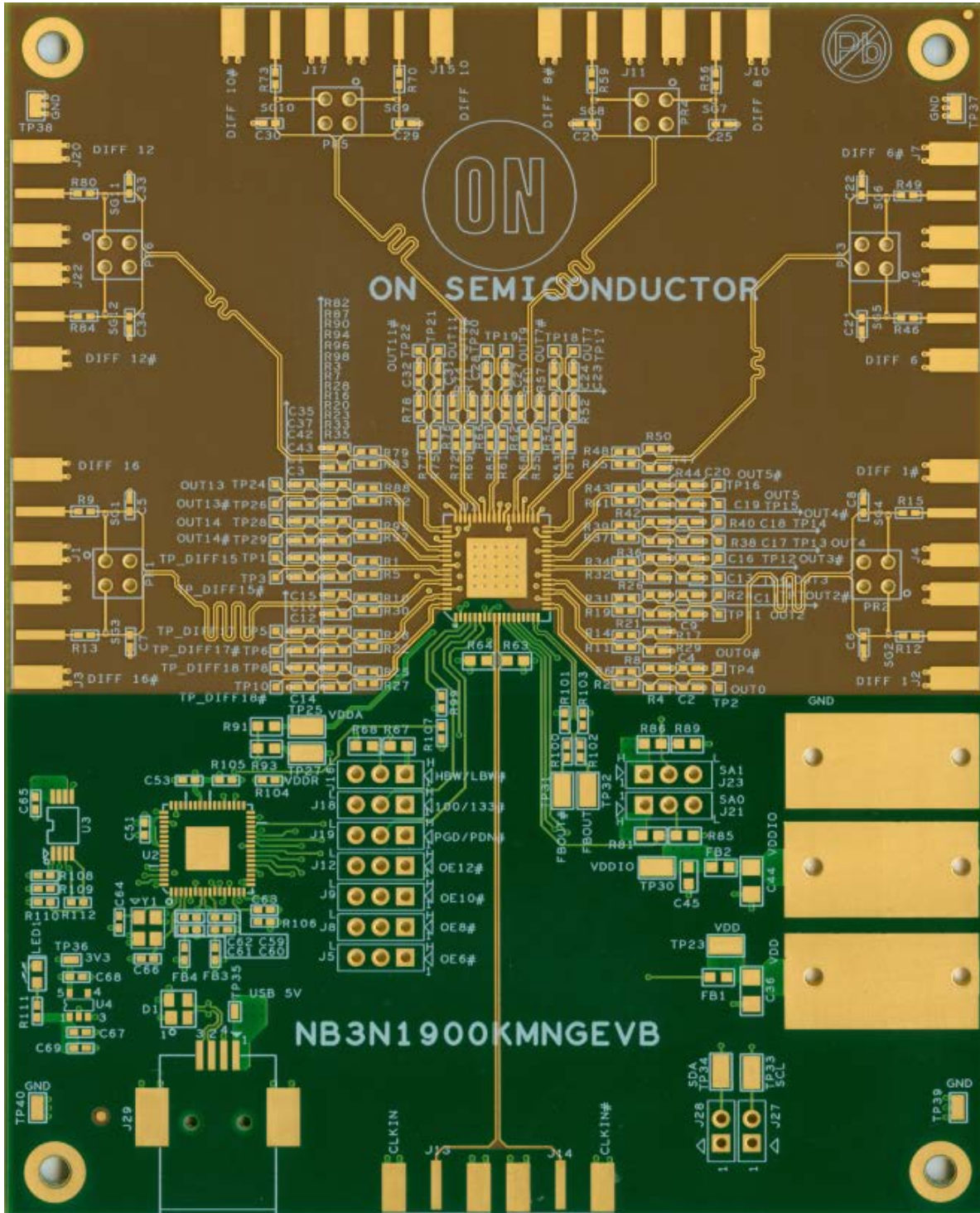


Figure 1: Test Board