

NCN26010BMNEVB 10Base-T1S Power Supply and Adapter Board User's Manual

EVBUM2834/D

Introduction

NCN26010BMNEVB is a PCB designed to allow customers to connect onsemi's NCN26010XMNEVB to a Raspberry Pi single board computer (SBC). The NCN26010XMNEVB is an evaluation board for the NCN26010, a 10Base-T1S transceiver with SPI interface.

The main purpose of the bridge board is to act as a physical interface adapter, routing the PMOD connector of the NCN26010XMNEVB to the appropriate pins on the 40-pin header on the Raspberry Pi SBC.

Features

The NCN26010BMNEVB bridge board includes all circuitry to power both a Raspberry Pi and an onsemi NCN26010XMNEVB. It features a DC/DC buck converter (NCV891330PD50R2G) that accepts an 8–28 V input and generates a regulated 5 V supply, capable of sourcing 3 A of continuous current. This is sufficient to power any Raspberry Pi model available today.

The board also contains a 3.3 V linear voltage regulator (NCP115ASN330T2G) to provide a stable 3.3 V supply to the connected 10Base-T1S MACPHY evaluation board.

The bridge board also establishes a data connection between the MACPHY evaluation board and the Raspberry Pi.

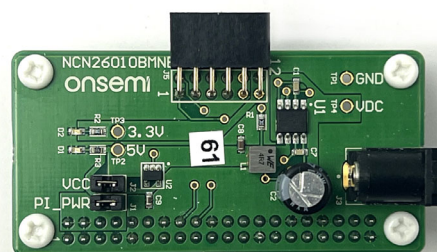


Figure 1. Bridge Board Photograph
(Revision 1)

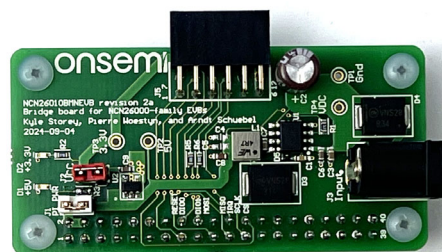


Figure 2. Bridge Board Photograph
(Revision 2)

EVBUM2834/D

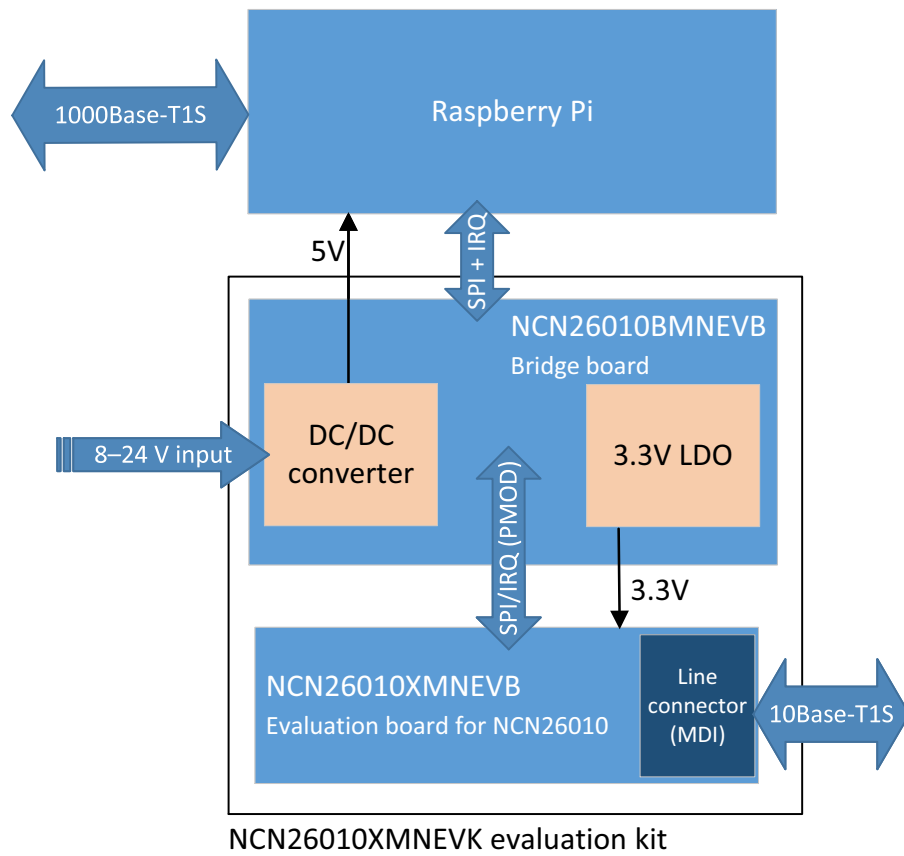


Figure 3. Simplified Block Diagram of the Complete Evaluation Kit

APPLICATIONS INFORMATION

Connectors and Jumper Locations

Figure 4 shows the top view of the EVB with the connectors and jumpers. When connected to a complete node, the setup looks as in Figure 5.

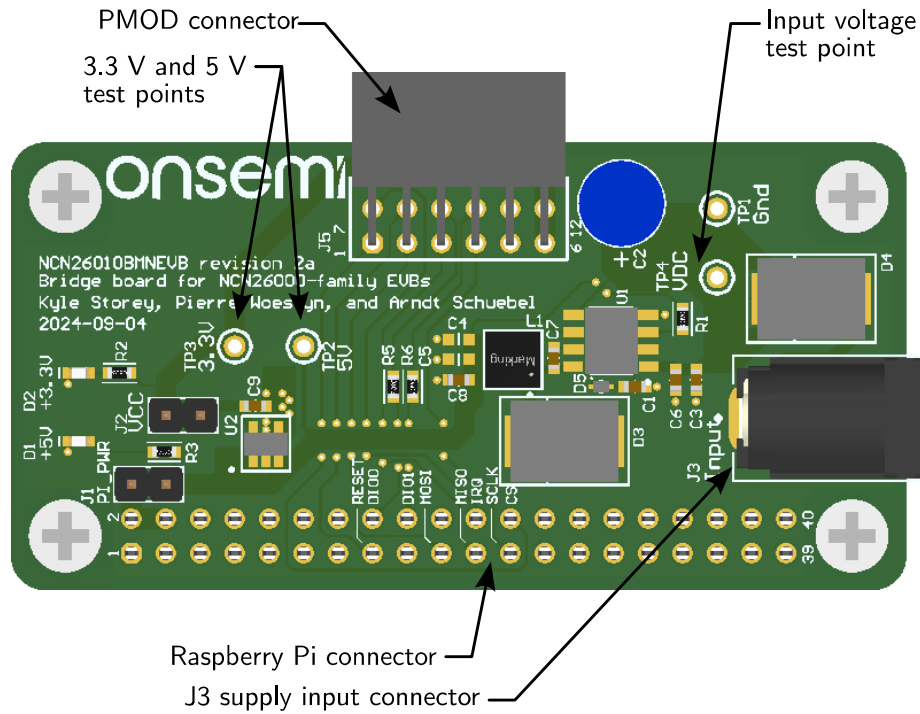


Figure 4. Connectors and Jumpers (Revision 2)

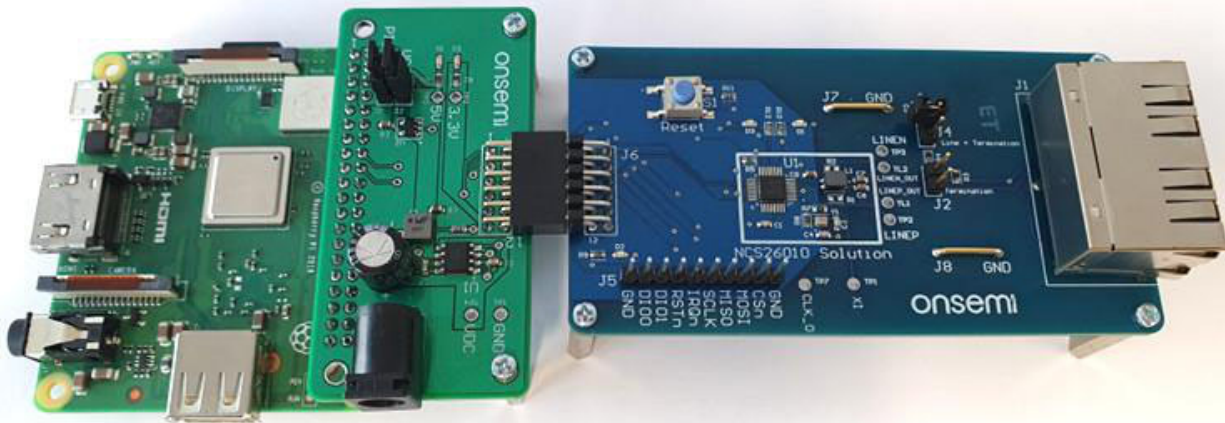


Figure 5. Raspberry Pi 3A+ Connected to the Evaluation Kit. A Kit Consists of an NCN26010BMNEVB and an NCN26010XMNEVB (Revision 1 Boards shown)

Power Supply, Test Points and Connectors

The bridge board can be powered through J3, a barrel connector. The input voltage may be 8—28 V. The pin inside the barrel connector is the supply terminal; the barrel ring is ground. A diode protects against reverse polarization.

Table 1 lists all connectors and test points on the bridge board.

Table 1. TEST POINTS AND JUMPERS

Name on Board	Function	Comment
TP1	GND	Ground connection
TP2	VDC	Can be used to measure the input voltage, VDC (8—28 V). Users could also use this test point for feeding the input voltage to the board if the J3 barrel connector is not used.
TP3	3.3 V	This test point can be used to monitor the 3.3 V VCC rail. This rail is passed to the PMOD connector, and from there to the transceiver board.
TP4	5 V	TP4 can be used to monitor the 5 V output of the DC/DC converter on the bridge board
J1	PI_PWR	When both the NCN26010XMNEVB and the Raspberry Pi are powered by their own external power supplies, this jumper needs to be left open. When the Raspberry Pi is powered from its micro-USB port and should also provide power to the MACPHY evaluation board connected via the J5 PMOD connector, then this jumper needs to be closed. When powering the entire setup with the DC/DC converter of the bridge board, the jumper also needs to be closed.
J2	VCC	To power a MACPHY evaluation board through the PMOD connector, close J2. If the MACPHY evaluation board is powered by an external power supply, it must be left open. J2 can also be used to measure the current consumed by the attached NCN26010XMNEVB: simply connect a current meter instead of closing the jumper.
J5	PMOD	PMOD connector, following the SPI-with-GPIO PMOD standard. The GPIOs connect to the DIO0–1 and IRQ nets of the NCN26010XMNEVB evaluation board.
Pi	Raspberry Pi	40-pin Raspberry Pi connector. Connects to a Raspberry Pi SBC.

For the pin-out of the PMOD and the Raspberry Pi connectors, refer to the board schematic and [1] at the end of this document.

Revision Information

Two board revisions have been designed to date. Refer to Figure 1 and Figure 2 for the visual appearance and to Figure 6 and Figure 7 for the schematics.

In revision 2, R3 was changed from 500 Ω to 3.6 k Ω . No other changes were made to the schematic. The layout was improved, particularly around the buck converter.

References

- [1] **onsemi**. *NCN26010XMNEVB 10BASE-TIS MACPHY Evaluation Board User's Manual (EVBUM2832/D)*. 2024.

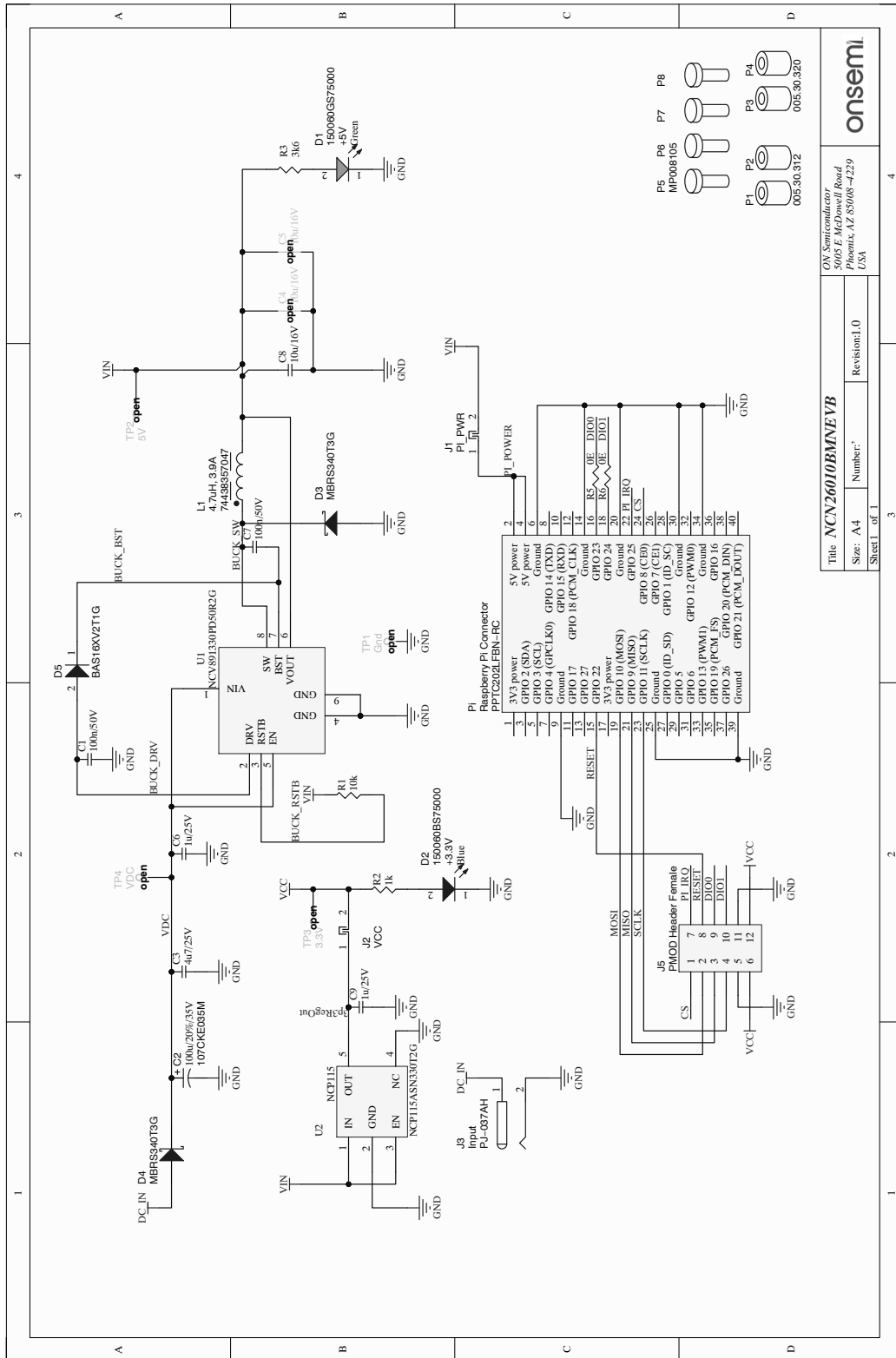


Figure 7. NCN26010BMNEVB Schematic (Revision 2)

All brand names and product names appearing in this document are registered trademarks or trademarks of their respective holders.

onsemi, **onsemi**, and other names, marks, and brands are registered and/or common law trademarks of Semiconductor Components Industries, LLC dba "**onsemi**" or its affiliates and/or subsidiaries in the United States and/or other countries. **onsemi** owns the rights to a number of patents, trademarks, copyrights, trade secrets, and other intellectual property. A listing of **onsemi**'s product/patent coverage may be accessed at www.onsemi.com/site/pdf/Patent-Marking.pdf. **onsemi** is an Equal Opportunity/Affirmative Action Employer. This literature is subject to all applicable copyright laws and is not for resale in any manner.

The evaluation board/kit (research and development board/kit) (hereinafter the "board") is not a finished product and is not available for sale to consumers. The board is only intended for research, development, demonstration and evaluation purposes and will only be used in laboratory/development areas by persons with an engineering/technical training and familiar with the risks associated with handling electrical/mechanical components, systems and subsystems. This person assumes full responsibility/liability for proper and safe handling. Any other use, resale or redistribution for any other purpose is strictly prohibited.

THE BOARD IS PROVIDED BY ONSEMI TO YOU "AS IS" AND WITHOUT ANY REPRESENTATIONS OR WARRANTIES WHATSOEVER. WITHOUT LIMITING THE FOREGOING, ONSEMI (AND ITS LICENSORS/SUPPLIERS) HEREBY DISCLAIMS ANY AND ALL REPRESENTATIONS AND WARRANTIES IN RELATION TO THE BOARD, ANY MODIFICATIONS, OR THIS AGREEMENT, WHETHER EXPRESS, IMPLIED, STATUTORY OR OTHERWISE, INCLUDING WITHOUT LIMITATION ANY AND ALL REPRESENTATIONS AND WARRANTIES OF MERCHANTABILITY, FITNESS FOR A PARTICULAR PURPOSE, TITLE, NON-INFRINGEMENT, AND THOSE ARISING FROM A COURSE OF DEALING, TRADE USAGE, TRADE CUSTOM OR TRADE PRACTICE.

onsemi reserves the right to make changes without further notice to any board.

You are responsible for determining whether the board will be suitable for your intended use or application or will achieve your intended results. Prior to using or distributing any systems that have been evaluated, designed or tested using the board, you agree to test and validate your design to confirm the functionality for your application. Any technical, applications or design information or advice, quality characterization, reliability data or other services provided by **onsemi** shall not constitute any representation or warranty by **onsemi**, and no additional obligations or liabilities shall arise from **onsemi** having provided such information or services.

onsemi products including the boards are not designed, intended, or authorized for use in life support systems, or any FDA Class 3 medical devices or medical devices with a similar or equivalent classification in a foreign jurisdiction, or any devices intended for implantation in the human body. You agree to indemnify, defend and hold harmless **onsemi**, its directors, officers, employees, representatives, agents, subsidiaries, affiliates, distributors, and assigns, against any and all liabilities, losses, costs, damages, judgments, and expenses, arising out of any claim, demand, investigation, lawsuit, regulatory action or cause of action arising out of or associated with any unauthorized use, even if such claim alleges that **onsemi** was negligent regarding the design or manufacture of any products and/or the board.

This evaluation board/kit does not fall within the scope of the European Union directives regarding electromagnetic compatibility, restricted substances (RoHS), recycling (WEEE), FCC, CE or UL, and may not meet the technical requirements of these or other related directives.

FCC WARNING – This evaluation board/kit is intended for use for engineering development, demonstration, or evaluation purposes only and is not considered by **onsemi** to be a finished end product fit for general consumer use. It may generate, use, or radiate radio frequency energy and has not been tested for compliance with the limits of computing devices pursuant to part 15 of FCC rules, which are designed to provide reasonable protection against radio frequency interference. Operation of this equipment may cause interference with radio communications, in which case the user shall be responsible, at its expense, to take whatever measures may be required to correct this interference.

onsemi does not convey any license under its patent rights nor the rights of others.

LIMITATIONS OF LIABILITY: **onsemi** shall not be liable for any special, consequential, incidental, indirect or punitive damages, including, but not limited to the costs of requalification, delay, loss of profits or goodwill, arising out of or in connection with the board, even if **onsemi** is advised of the possibility of such damages. In no event shall **onsemi**'s aggregate liability from any obligation arising out of or in connection with the board, under any theory of liability, exceed the purchase price paid for the board, if any.

The board is provided to you subject to the license and other terms per **onsemi**'s standard terms and conditions of sale. For more information and documentation, please visit www.onsemi.com.

ADDITIONAL INFORMATION

TECHNICAL PUBLICATIONS:

Technical Library: www.onsemi.com/design/resources/technical-documentation
onsemi Website: www.onsemi.com

ONLINE SUPPORT: www.onsemi.com/support

For additional information, please contact your local Sales Representative at www.onsemi.com/support/sales