

ON Semiconductor

Is Now

onsemi™

To learn more about onsemi™, please visit our website at
www.onsemi.com

onsemi and **onsemi** and other names, marks, and brands are registered and/or common law trademarks of Semiconductor Components Industries, LLC dba "**onsemi**" or its affiliates and/or subsidiaries in the United States and/or other countries. **onsemi** owns the rights to a number of patents, trademarks, copyrights, trade secrets, and other intellectual property. A listing of **onsemi** product/patent coverage may be accessed at www.onsemi.com/site/pdf/Patent-Marking.pdf. **onsemi** reserves the right to make changes at any time to any products or information herein, without notice. The information herein is provided "as-is" and **onsemi** makes no warranty, representation or guarantee regarding the accuracy of the information, product features, availability, functionality, or suitability of its products for any particular purpose, nor does **onsemi** assume any liability arising out of the application or use of any product or circuit, and specifically disclaims any and all liability, including without limitation special, consequential or incidental damages. Buyer is responsible for its products and applications using **onsemi** products, including compliance with all laws, regulations and safety requirements or standards, regardless of any support or applications information provided by **onsemi**. "Typical" parameters which may be provided in **onsemi** data sheets and/or specifications can and do vary in different applications and actual performance may vary over time. All operating parameters, including "Typicals" must be validated for each customer application by customer's technical experts. **onsemi** does not convey any license under any of its intellectual property rights nor the rights of others. **onsemi** products are not designed, intended, or authorized for use as a critical component in life support systems or any FDA Class 3 medical devices or medical devices with a same or similar classification in a foreign jurisdiction or any devices intended for implantation in the human body. Should Buyer purchase or use **onsemi** products for any such unintended or unauthorized application, Buyer shall indemnify and hold **onsemi** and its officers, employees, subsidiaries, affiliates, and distributors harmless against all claims, costs, damages, and expenses, and reasonable attorney fees arising out of, directly or indirectly, any claim of personal injury or death associated with such unintended or unauthorized use, even if such claim alleges that **onsemi** was negligent regarding the design or manufacture of the part. **onsemi** is an Equal Opportunity/Affirmative Action Employer. This literature is subject to all applicable copyright laws and is not for resale in any manner. Other names and brands may be claimed as the property of others.

NCP1422LEDGEVB

NCP1422 High Current LED Driver Evaluation Board User's Manual



ON Semiconductor®

<http://onsemi.com>

EVAL BOARD USER'S MANUAL

Description

The NCP1422 is a monolithic, micro-power, high-frequency, step-up switching converter IC designed for battery operated hand-held electronic products with up to 800 mA loading. It integrates a synchronous rectifier (Sync-Rect) to improve efficiency and to eliminate the external Schottky Diode. The NCP1422's high switching frequency (up to 1.2 MHz) allows for a low profile, small sized inductor and output capacitor to be used. When the device is disabled, the internal conduction path from the battery to the load is fully blocked, which isolates the load from the battery. This True-Cutoff function reduces the shutdown current to typically only 50 nA. A Ring-Killer is also integrated to eliminate high-frequency ringing in discontinuous conduction mode. Finally, a Low-Battery Detector, Logic-Controlled Shutdown, Cycle-by Cycle Current Limiting and Thermal Shutdown provide value-added features for various battery operated applications. With all these functions on, the quiescent supply current is typically only 8.5 μ A. This device is available in the compact and low profile DFN-10 package.

The NCP1422LED evaluation board uses the NCP1422 to drive a high power, white LED. A low voltage MOSFET switch circuit on the board can be pulsed to switch between a low and high LED current as would be found in a focus and flash application.

The circuit is configured to minimize power dissipation in the current sense resistor and the effects of lot-to-lot LED forward voltage (VF) variation on LED current. Application note AND8171/D describes how to design this circuit.

Features

- Capable of driving White LEDs up to 800 mA
- High Switching Frequency, up to 1.2 MHz
- True-Cutoff Function Reduces Device Shutdown Current to Typically 50 nA

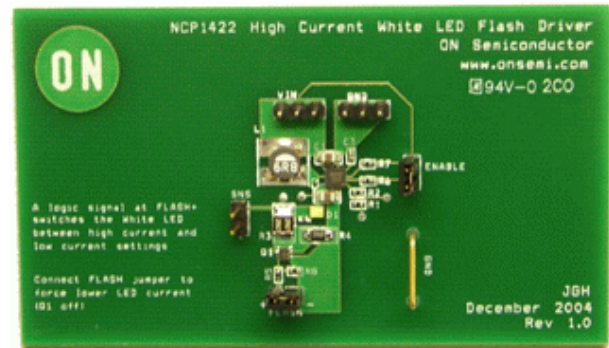


Figure 1. NCP1422LEDG Evaluation Board

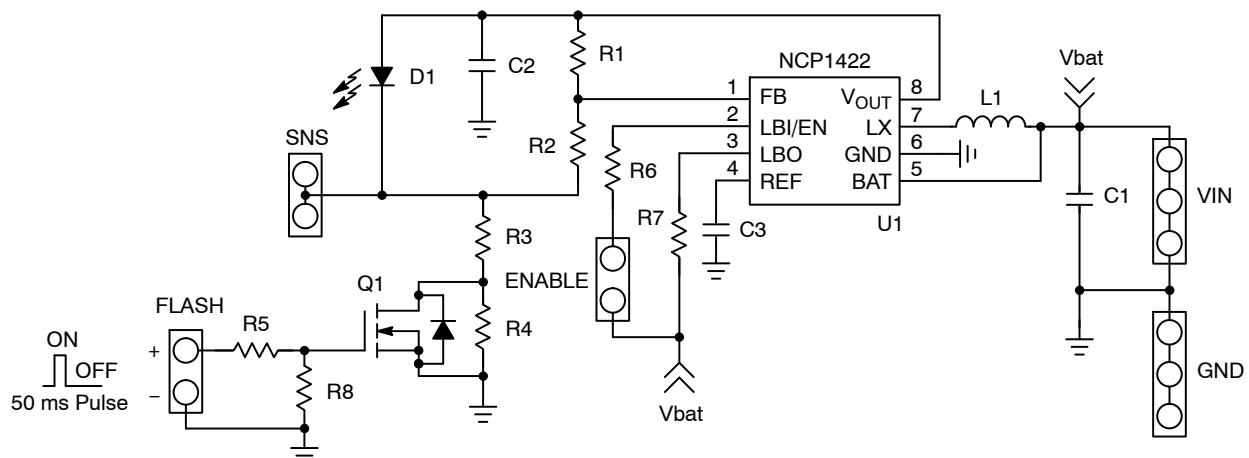


Figure 2. NCP1422LEDG Evaluation Board Schematic

NCP1422LEDGEVB

Test Procedure

Required Equipment

1. Power Supply (Capable of > 5 V, 2 A with 100 mV Resolution)
2. Voltmeter
3. Function Generator Set to Parameters in PULSE Table (see Table 1)

Testing

1. Set DC Power Supply to 3.6 Vdc and Current Limit to 2 A
2. Disconnect Jumper from ENABLE
3. Connect Jumper to FLASH
4. Connect DC Power Supply to VIN and GND at Top of Board (Positive on VIN, Negative on GND)
5. LED Should be OFF
6. Connect Voltmeter between SNS and GND
7. Connect Jumper to ENABLE
8. LED Should be ON (CAUTION, DO NOT LOOK DIRECTLY AT THE LED. IT IS EXTREMELY BRIGHT)

9. Measure SNS voltage. It Should be between 700–900 mV
10. Disconnect Jumper from FLASH
11. Apply Function Generator Output Across FLASH+ and FLASH–
12. LED Should Alternate between Two Brightness Levels
13. Disconnect Function Generator from FLASH
14. Turn Off Power Supply and Disconnect. Reconnect Jumpers to ENABLE and FLASH

Table 1. PULSE (Note 1)

Waveform	Squarewave
Trekuensi	4.0 Hz
Amplitude	2.5 Vpp
Offset	1.25 Vdc
% Duty	20%

1. This produces a 5 V, 50 ms pulse train.

Table 2. NCP1422LEDG EVALUATION BOARD BILL OF MATERIALS

Designator	Qty.	Description	Value	Tolerance	Footprint	Manufacturer	Manufacturer Part Number	Substitution Allowed	RoHS Compliant
U1	1	NCP1422 Boost Converter	–	–	DFN–10 (3 × 3 mm)	ON Semiconductor	NCP1422MNR2G	No	Yes
D1	1	Lumiled High Power White LED	–	–	(1.64 × 2.04 × 0.9 mm)	Lumiled	LXCL–PWF1	No	Yes
Q1	1	Torch/Flash Switch	–	–	SC–88	ON Semiconductor	NTJS3157NT4G	No	Yes
L1	1	Inductor	6.8 μH, 800 mA	20%	(5.6 × 5.0 × 1.0 mm)	TDK	VLP5610T–6R8MR80	No	Yes
C1, C2	2	Ceramic Capacitor	22 μF, 6.3 V X5R	20%	0805	TDK	C2012X5R0J226M	Yes	Yes
C3	1	Ceramic Capacitor	470 nF, 6.3 V X5R	10%	0402	TDK	ECJ–0EB0J474K	Yes	Yes
R1	1	Resistor	665 kΩ	1%	0402	Vishay	CRCW0402665KFKED	Yes	Yes
R2, R6, R7	3	Resistor	100 kΩ	1%	0402	Vishay	CRCW0402100KFKED	Yes	Yes
R3	1	Resistor (1.33 Ω)*	2.67 Ω	1%	1206	Vishay	CRCW12062R67FKED	Yes	Yes
R4	1	Resistor	6.65 Ω	1%	1206	Vishay	CRCW12066R65FKED	Yes	Yes
R5	1	Resistor	1.0 kΩ	Any	0402	Vishay	CRCW04021K00FKED	Yes	Yes
R8	1	Resistor	10 kΩ	Any	0402	Vishay	CRCW040210K0FKED	Yes	Yes
GND	1	Ground Shunt	–	–	–	Harwin	D3082–05	Yes	Yes
VIN, GND	2	Post, 3 position, 0.1" spacing	–	–	–	Molex	90120–0160	Yes	Yes
FLASH, SNS, ENABLE	3	Post, 2 position, 0.1" spacing	–	–	–	Molex	90120–0161	Yes	Yes

*2–2.67 Ω resistors were used in parallel

NCP1422LEDGEVB

ON Semiconductor and **ON** are registered trademarks of Semiconductor Components Industries, LLC (SCILLC). SCILLC owns the rights to a number of patents, trademarks, copyrights, trade secrets, and other intellectual property. A listing of SCILLC's product/patent coverage may be accessed at www.onsemi.com/site/pdf/Patent-Marking.pdf. SCILLC reserves the right to make changes without further notice to any products herein. SCILLC makes no warranty, representation or guarantee regarding the suitability of its products for any particular purpose, nor does SCILLC assume any liability arising out of the application or use of any product or circuit, and specifically disclaims any and all liability, including without limitation special, consequential or incidental damages. "Typical" parameters which may be provided in SCILLC data sheets and/or specifications can and do vary in different applications and actual performance may vary over time. All operating parameters, including "Typicals" must be validated for each customer application by customer's technical experts. SCILLC does not convey any license under its patent rights nor the rights of others. SCILLC products are not designed, intended, or authorized for use as components in systems intended for surgical implant into the body, or other applications intended to support or sustain life, or for any other application in which the failure of the SCILLC product could create a situation where personal injury or death may occur. Should Buyer purchase or use SCILLC products for any such unintended or unauthorized application, Buyer shall indemnify and hold SCILLC and its officers, employees, subsidiaries, affiliates, and distributors harmless against all claims, costs, damages, and expenses, and reasonable attorney fees arising out of, directly or indirectly, any claim of personal injury or death associated with such unintended or unauthorized use, even if such claim alleges that SCILLC was negligent regarding the design or manufacture of the part. SCILLC is an Equal Opportunity/Affirmative Action Employer. This literature is subject to all applicable copyright laws and is not for resale in any manner.

PUBLICATION ORDERING INFORMATION

LITERATURE FULFILLMENT:

Literature Distribution Center for ON Semiconductor
P.O. Box 5163, Denver, Colorado 80217 USA
Phone: 303-675-2175 or 800-344-3860 Toll Free USA/Canada
Fax: 303-675-2176 or 800-344-3867 Toll Free USA/Canada
Email: orderlit@onsemi.com

N. American Technical Support: 800-282-9855 Toll Free
USA/Canada
Europe, Middle East and Africa Technical Support:
Phone: 421 33 790 2910
Japan Customer Focus Center
Phone: 81-3-5817-1050

ON Semiconductor Website: www.onsemi.com
Order Literature: <http://www.onsemi.com/orderlit>
For additional information, please contact your local
Sales Representative