

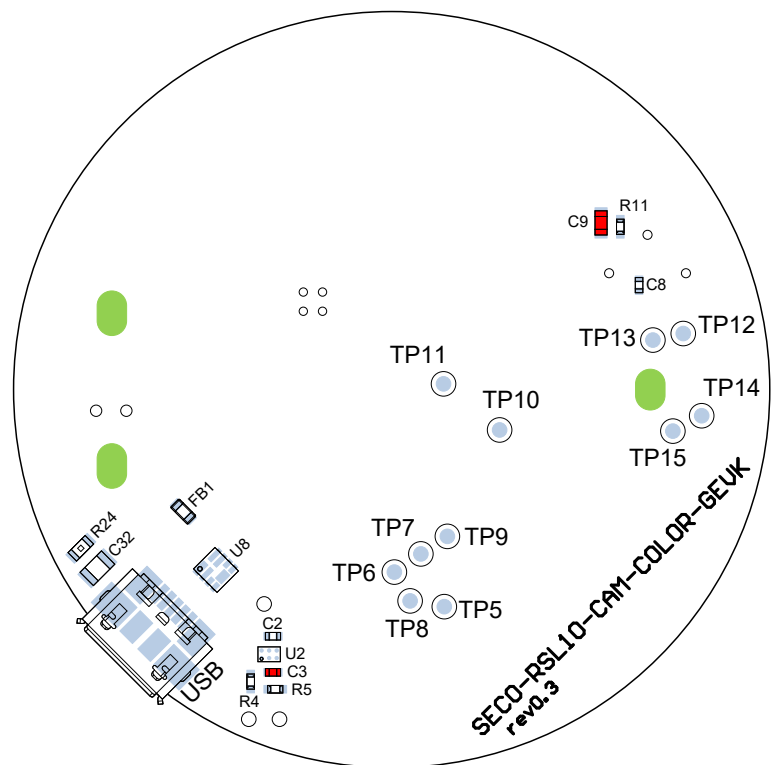
Bill Of Materials - Bottom side components

Designator	Comment	Quantity
C2	1 μ F	1
C8	100 nF	1
C32	4n7	1
FB1	33 Ohm @ 100 MHz	1
R4, R5	68k	2
R11	100k	1
R24	1M	1
U2	FPF1003A	1
U8	EMI2121MTTAG	1
USB	47346-0001	1

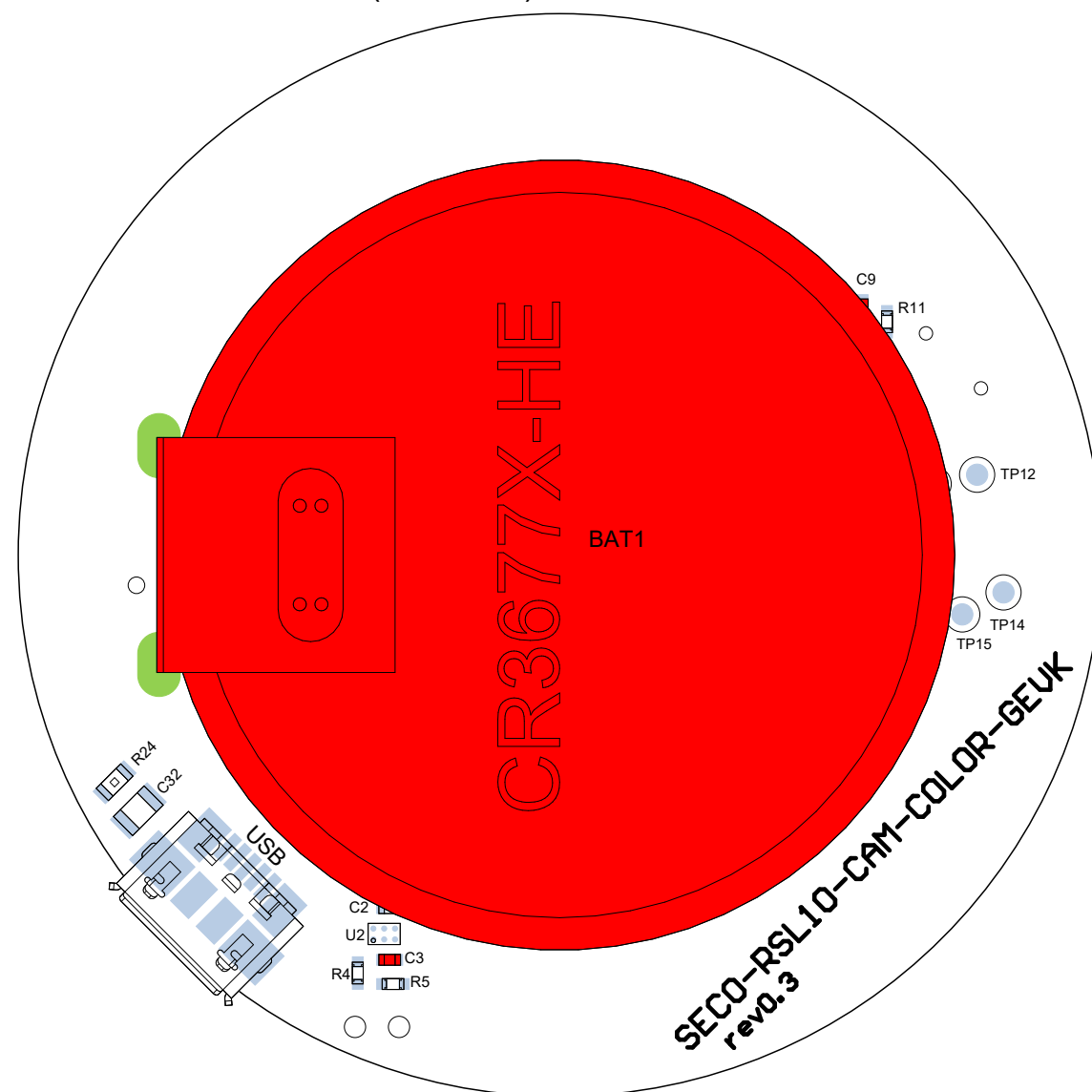
- Only components present in this assembly variant are listed in BoM table on the left
- Components not present in this assembly variant are red coloured

View from Bottom side (Scale 2:1) - Test points

Note: several test points are located underneath the battery and for debugging purposes the battery has to be desoldered/not assembled



View from Bottom side (Scale 3:1)



SECO-RSL10-CAM-COLOR-GEVK

Variant name: ARX3A0CSSM090110

Engineer: T. Duris

Date: 18. March 2021 16:58

PCB File: ULP_BLE_Camera.PcbDoc

Repository revision: Not in repository

Revision:
rev0.3

Assembly
document

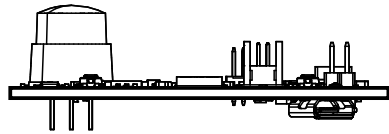
State:
released

Sheet
2 / 4

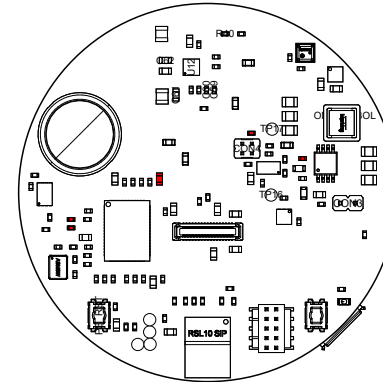
ON Semiconductor
Solution Engineering Center
Piestany



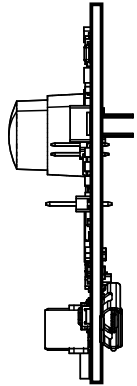
View from Front side (Scale 1:1)



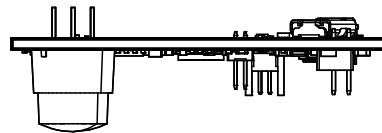
View from Top side (Scale 1:1)



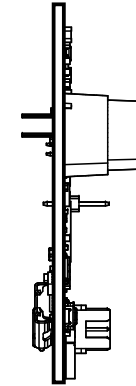
View from Right side (Scale 1:1)



View from Back side (Scale 1:1)



View from Left side (Scale 1:1)



SECO-RSL10-CAM-COLOR-GEVK

Variant name: ARX3A0CSSM090110

Engineer: T. Duris

Date: 18. March 2021 16:58

PCB File: ULP_BLE_Camera.PcbDoc

Repository revision: Not in repository

Revision:
rev0.3

Assembly
document

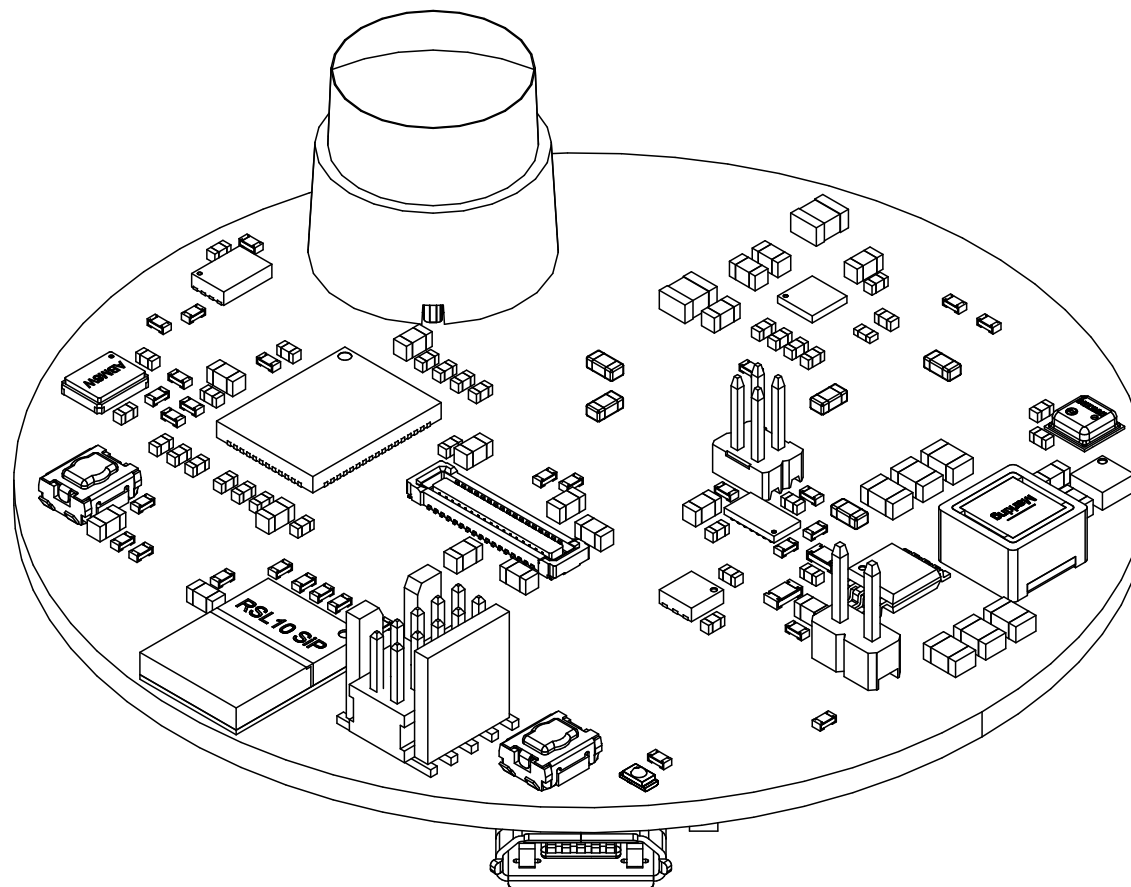
State:
released

Sheet
3 / 4

ON Semiconductor
Solution Engineering Center
Piestany



View from Front side (Scale 3:1)

**SECO-RSL10-CAM-COLOR-GEVK**

Variant name: ARX3A0CSSM090110

Engineer: T. Duris

Date: 18. March 2021 16:58

PCB File: ULP_BLE_Camera.PcbDoc

Repository revision: Not in repository

Revision:
rev0.3State:
releasedAssembly
documentSheet
4 / 4**ON Semiconductor**
Solution Engineering Center
Piestany