

Figure 17. Safe operation area at  $T_C = 25^\circ\text{C}$ ,  $D = 0$ , Parameter  $t_p$

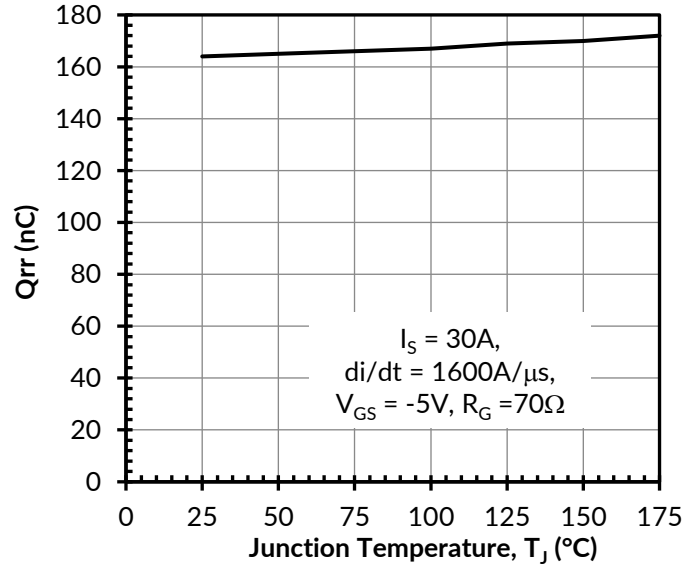


Figure 18. Reverse recovery charge  $Q_{rr}$  vs. junction temperature at  $V_{DS} = 800\text{V}$

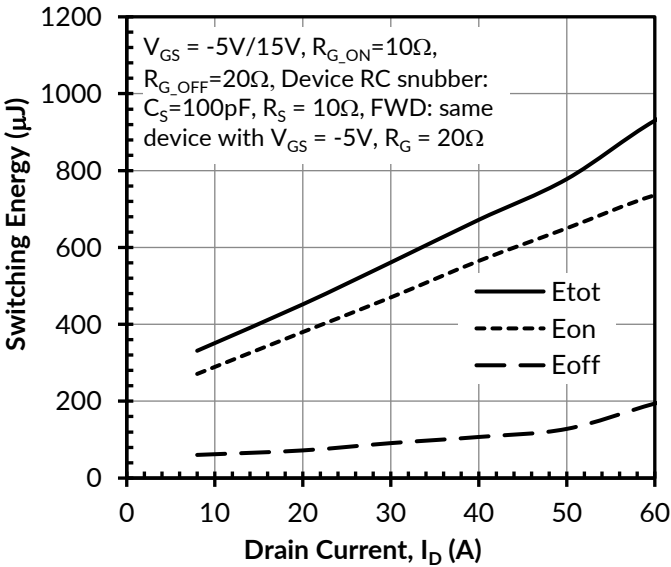


Figure 19. Clamped inductive switching energy vs. drain current at  $V_{DS} = 800\text{V}$  and  $T_J = 25^\circ\text{C}$

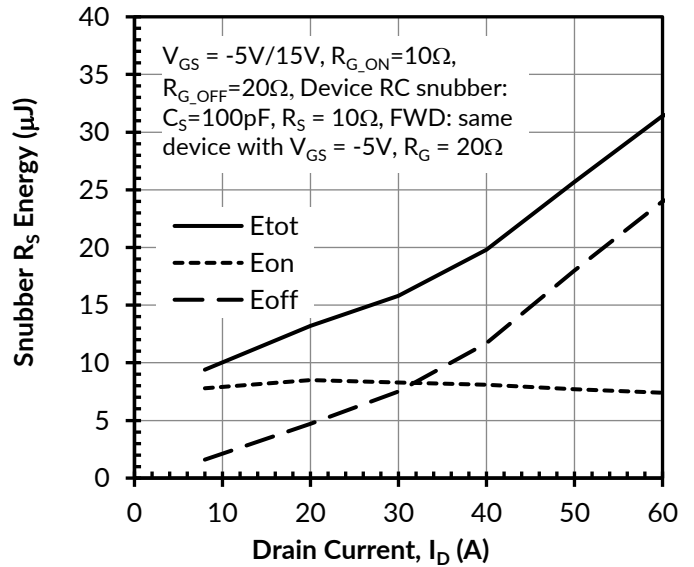


Figure 20. RC snubber energy losses vs. drain current at  $V_{DS} = 800\text{V}$ , and  $T_J = 25^\circ\text{C}$

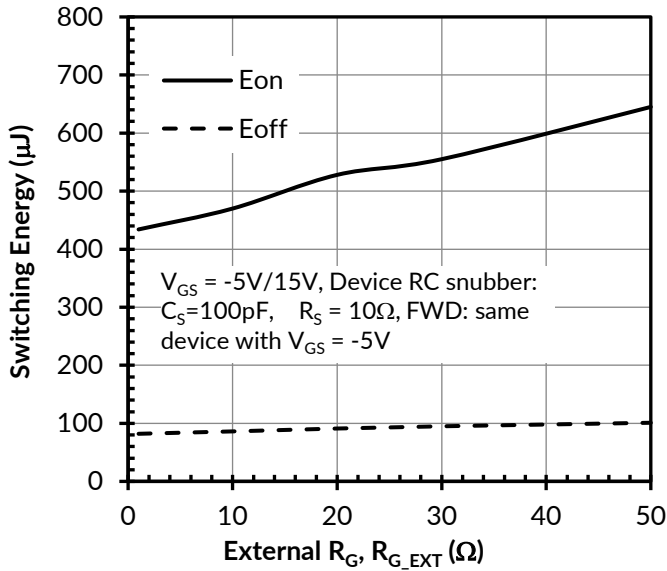


Figure 21. Clamped inductive switching energies vs.  $R_{G,EXT}$  at  $V_{DS} = 800V$ ,  $I_D = 30A$ , and  $T_J = 25^\circ C$

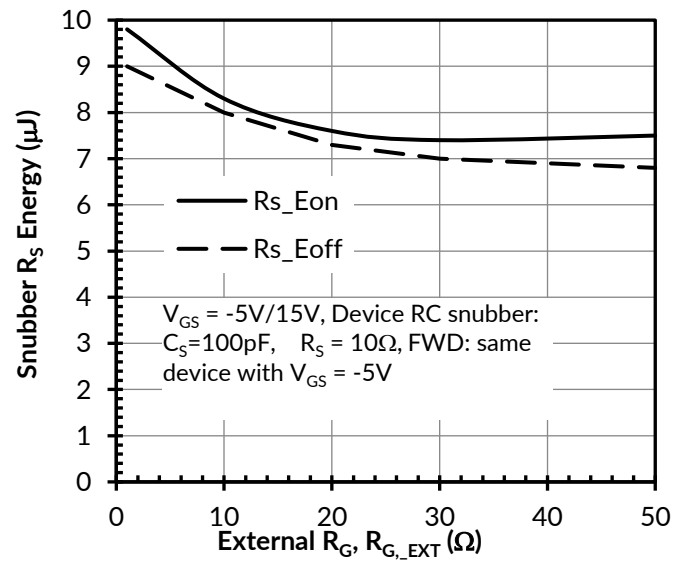


Figure 22. RC snubber energy losses vs.  $R_{G,EXT}$  at  $V_{DS} = 800V$ ,  $I_D = 30A$ , and  $T_J = 25^\circ C$

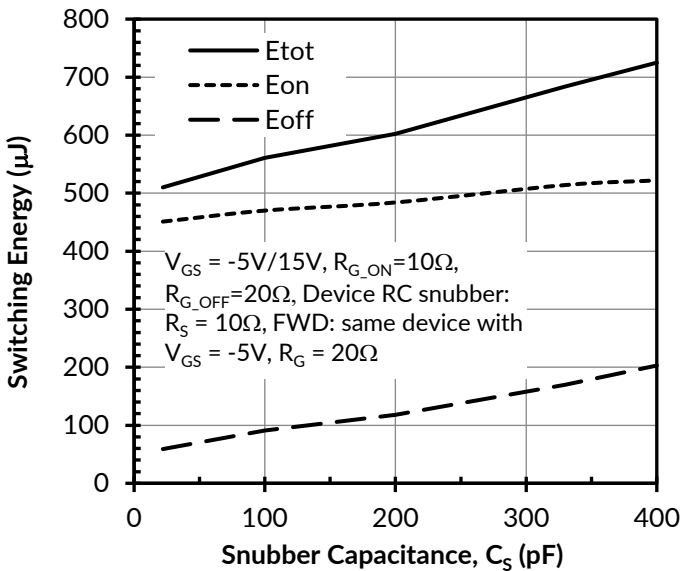


Figure 23. Clamped inductive switching energies vs. snubber capacitance  $C_S$  at  $V_{DS} = 800V$ ,  $I_D = 30A$ , and  $T_J = 25^\circ C$

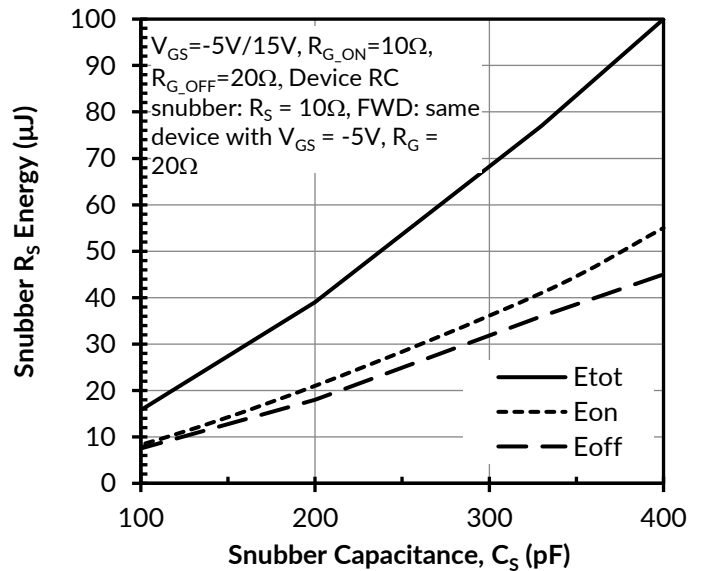


Figure 24. RC snubber energy losses vs. snubber capacitance  $C_S$  at  $V_{DS} = 800V$ ,  $I_D = 30A$ , and  $T_J = 25^\circ C$

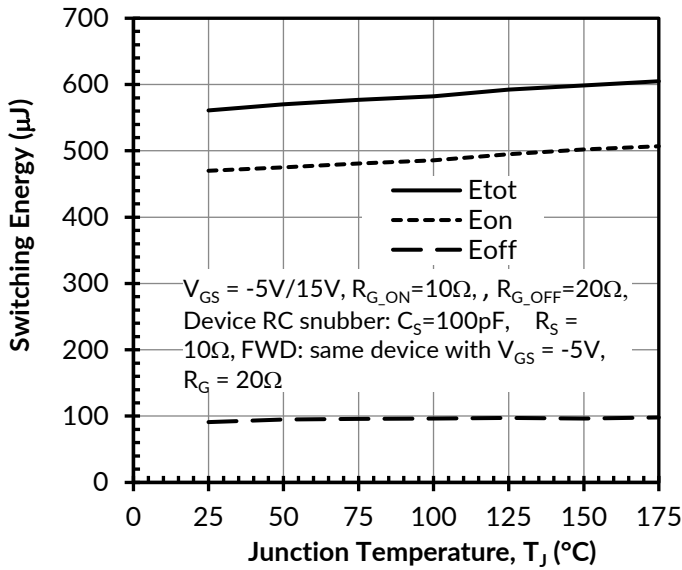


Figure 25. Clamped inductive switching energy vs. junction temperature at  $V_{DS} = 800V$  and  $I_D = 30A$

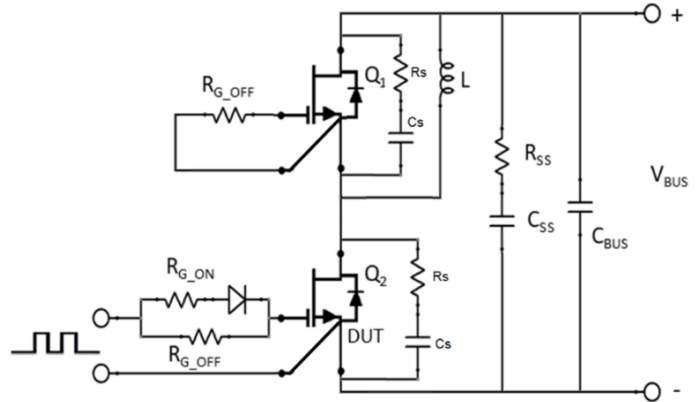


Figure 26. Schematic of the half-bridge mode switching test circuit with device RC snubbers ( $R_s = 10\Omega$ ,  $C_s = 100pF$ ) and a bus RC snubber ( $R_{BS} = 2.5\Omega$ ,  $C_{BS} = 100nF$ ).

## Applications Information

SiC FETs are enhancement-mode power switches formed by a high-voltage SiC depletion-mode JFET and a low-voltage silicon MOSFET connected in series. The silicon MOSFET serves as the control unit while the SiC JFET provides high voltage blocking in the off state. This combination of devices in a single package provides compatibility with standard gate drivers and offers superior performance in terms of low on-resistance ( $R_{DS(on)}$ ), output capacitance ( $C_{oss}$ ), gate charge ( $Q_G$ ), and reverse recovery charge ( $Q_{rr}$ ) leading to low conduction and switching losses. The SiC FETs also provide excellent reverse conduction capability eliminating the need for an external anti-parallel diode.

Like other high performance power switches, proper PCB layout design to minimize circuit parasitics is strongly recommended due to the high  $dv/dt$  and  $di/dt$  rates. An external gate resistor is recommended when the FET is working in the diode mode in order to achieve the optimum reverse recovery performance. For more information on SiC FET operation, see <https://www.qorvo.com/design-hub>.

A snubber circuit with a small  $R_{(G)}$ , or gate resistor, provides better EMI suppression with higher efficiency compared to using a high  $R_{(G)}$  value. There is no extra gate delay time when using the snubber circuitry, and a small  $R_{(G)}$  will better control both the turn-off  $V_{(DS)}$  peak spike and ringing duration, while a high  $R_{(G)}$  will damp the peak spike but result in a longer delay time. In addition, the total switching loss when using a snubber circuit is less than using high  $R_{(G)}$ , while greatly reducing  $E_{(OFF)}$  from mid-to-full load range with only a small increase in  $E_{(ON)}$ . Efficiency will therefore improve with higher load current. For more information on how a snubber circuit will improve overall system performance, visit the Qorvo website at <https://www.qorvo.com/design-hub>.

## Important notice

The information contained herein is believed to be reliable; however, Qorvo makes no warranties regarding the information contained herein and assumes no responsibility or liability whatsoever for the use of the information contained herein. All information contained herein is subject to change without notice. Customers should obtain and verify the latest relevant information before placing orders for Qorvo products. The information contained herein or any use of such information does not grant, explicitly or implicitly, to any party any patent rights, licenses, or any other intellectual property rights, whether with regard to such information itself or anything described by such information. THIS INFORMATION DOES NOT CONSTITUTE A WARRANTY WITH RESPECT TO THE PRODUCTS DESCRIBED HEREIN, AND QORVO HEREBY DISCLAIMS ANY AND ALL WARRANTIES WITH RESPECT TO SUCH PRODUCTS WHETHER EXPRESS OR IMPLIED BY LAW, COURSE OF DEALING, COURSE OF PERFORMANCE, USAGE OF TRADE OR OTHERWISE, INCLUDING THE IMPLIED WARRANTIES OF MERCHANTABILITY AND FITNESS FOR A PARTICULAR PURPOSE. Without limiting the generality of the foregoing, Qorvo products are not warranted or authorized for use as critical components in medical, life-saving, or life-sustaining applications, or other applications where a failure would reasonably be expected to cause severe personal injury or death.