

NSVF4017SG4

RF Transistor for Low Noise Amplifier

12 V, 100 mA, $f_T = 10$ GHz typ.

This RF transistor is designed for low noise amplifier applications. MCPH package is suitable for use under high temperature environment because it has superior heat radiation characteristics. This RF transistor is AEC-Q101 qualified and PPAP capable for automotive applications.

Features

- Low-noise Use: $NF = 1.2$ dB typ. ($f = 1$ GHz)
- High Cut-off Frequency: $f_T = 10$ GHz typ. ($V_{CE} = 5$ V)
- High Gain: $|S_{21e}|^2 = 17$ dB typ. ($f = 1$ GHz)
- MCPH4 Package is Pin-compatible with SC-82FL
- AEC-Q101 Qualified and PPAP Capable
- These Devices are Pb-Free, Halogen Free/BFR Free and are RoHS Compliant

Typical Applications

- Low Noise Amplifier for Digital Radio
- Low Noise Amplifier for TV
- Low Noise Amplifier for FM Radio
- RF Amplifier for UHF Application

MAXIMUM RATINGS at $T_A = 25^\circ\text{C}$

| Rating | Symbol | Value | Unit |
|--|----------------|-------------|------------------|
| Collector to Base Voltage | V_{CBO} | 20 | V |
| Collector to Emitter Voltage | V_{CEO} | 12 | V |
| Emitter to Base Voltage | V_{EBO} | 2 | V |
| Collector Current | I_C | 100 | mA |
| Collector Dissipation | P_C | 450 | mW |
| Operating Junction and Storage Temperature | T_J, T_{stg} | -55 to +150 | $^\circ\text{C}$ |

Stresses exceeding those listed in the Maximum Ratings table may damage the device. If any of these limits are exceeded, device functionality should not be assumed, damage may occur and reliability may be affected.



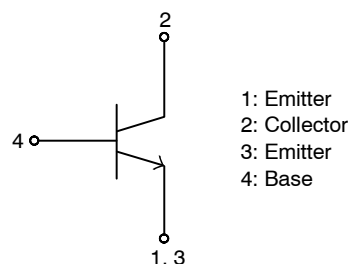
ON Semiconductor®

www.onsemi.com

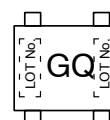


SC-82FL
MCPH4
CASE 419AR

ELECTRICAL CONNECTION NPN



MARKING DIAGRAM



GQ = Specific Device Code
XX = Lot Number

ORDERING INFORMATION

| Device | Package | Shipping† |
|----------------|----------------------|-----------------------|
| NSVF4015SG4T1G | SC-82FL (Pb-Free) | 3000 / Tape & Reel |

†For information on tape and reel specifications, including part orientation and tape sizes, please refer to our Tape and Reel Packaging Specification Brochure, BRD8011/D.

NSVF4017SG4

Table 1. ELECTRICAL CHARACTERISTICS at $T_A = 25^\circ\text{C}$ (Note 1)

| Parameter | Symbol | Conditions | Value | | | Unit |
|--------------------------|---------------|---|-------|-----|-----|---------------|
| | | | Min | Typ | Max | |
| Collector Cutoff Current | I_{CBO} | $V_{CB} = 5\text{ V}, I_E = 0\text{ A}$ | | | 1.0 | μA |
| Emitter Cutoff Current | I_{EBO} | $V_{EB} = 1\text{ V}, I_C = 0\text{ A}$ | | | 1.0 | μA |
| DC Current Gain | h_{FE} | $V_{CE} = 5\text{ V}, I_C = 50\text{ mA}$ | 60 | | 150 | |
| Gain-Bandwidth Product | f_T | $V_{CE} = 5\text{ V}, I_C = 30\text{ mA}$ | 8 | 10 | | GHz |
| Forward Transfer Gain | $ S_{21e} ^2$ | $V_{CE} = 5\text{ V}, I_C = 30\text{ mA}, f = 1\text{ GHz}$ | 14 | 17 | | dB |
| Noise Figure | NF | $V_{CE} = 5\text{ V}, I_C = 10\text{ mA}, f = 1\text{ GHz}$ | | 1.2 | 1.8 | dB |

Product parametric performance is indicated in the Electrical Characteristics for the listed test conditions, unless otherwise noted. Product performance may not be indicated by the Electrical Characteristics if operated under different conditions.

1. Pay attention to handling since it is liable to be affected by static electricity due to the high-frequency process adopted.

NSVF4017SG4

TYPICAL CHARACTERISTICS

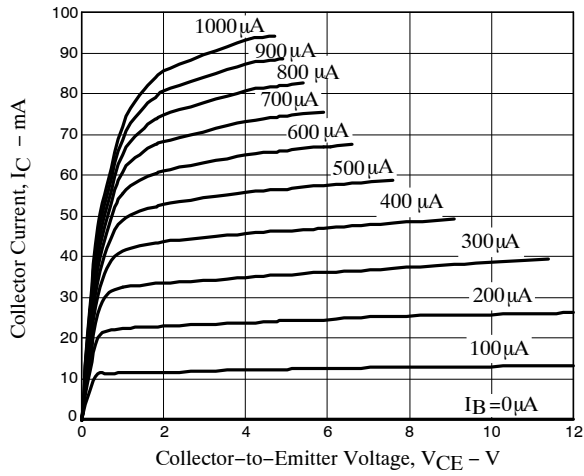


Figure 1. I_C vs. V_{CE}

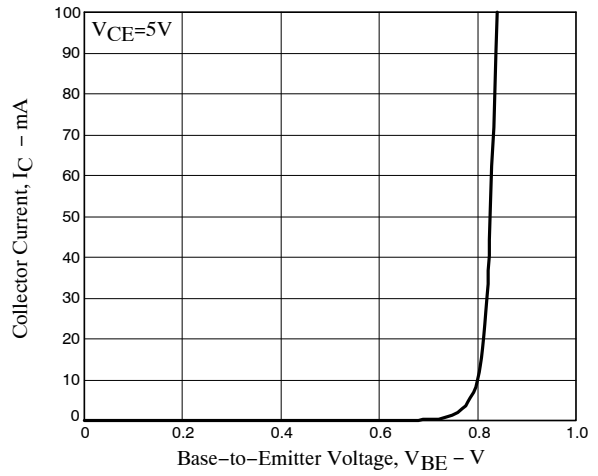


Figure 2. I_C vs. V_{BE}

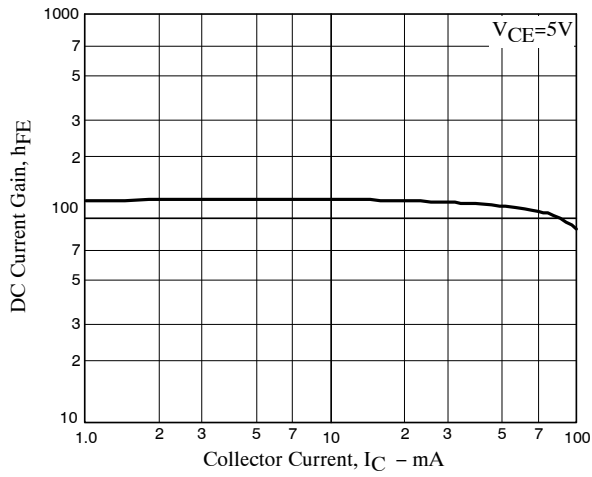


Figure 3. h_{FE} vs. I_C

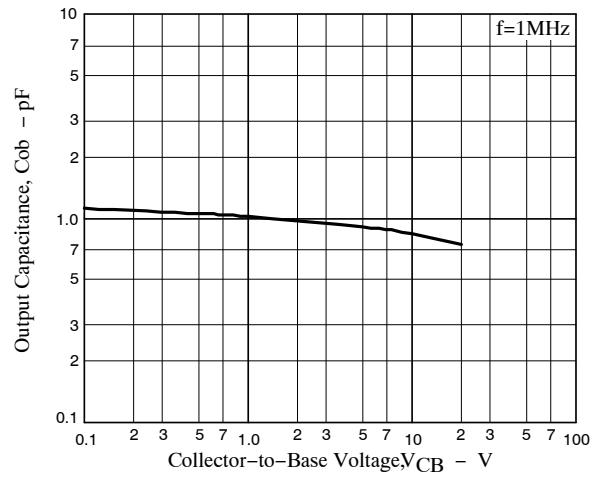


Figure 4. C_{ob} vs. V_{CB}

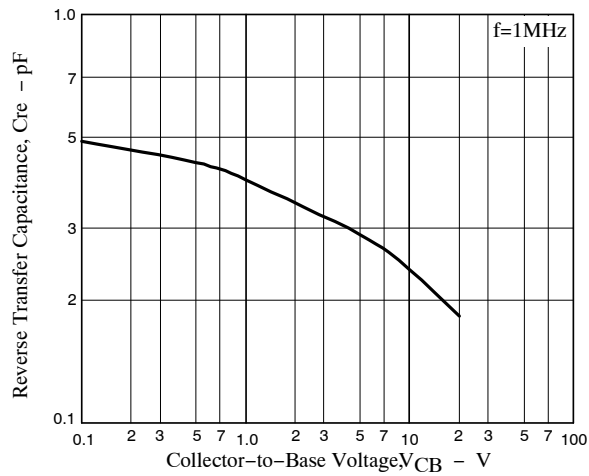


Figure 5. C_{re} vs. V_{CB}

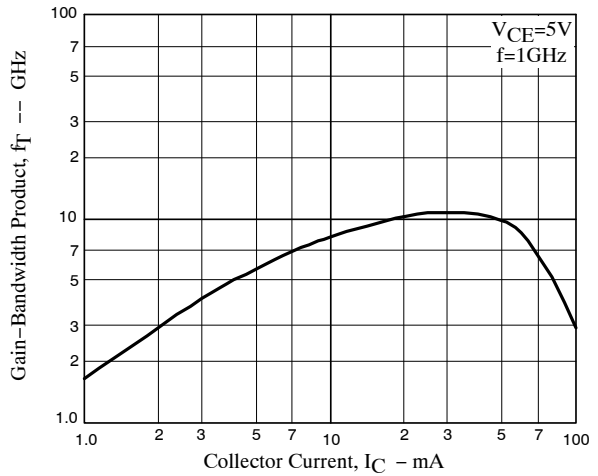


Figure 6. f_T vs. I_C

NSVF4017SG4

TYPICAL CHARACTERISTICS

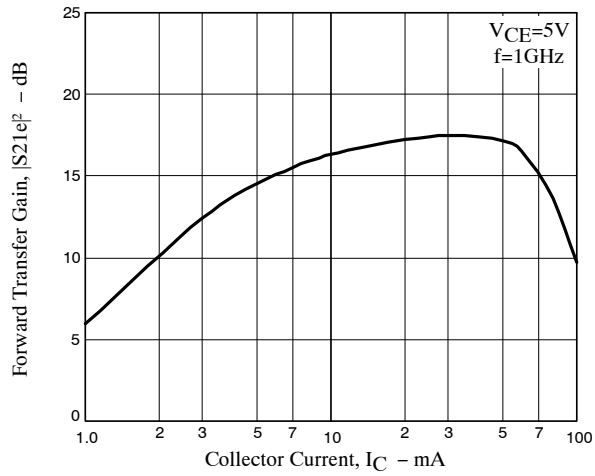


Figure 7. $|S_{21e}|^2$ vs. I_C

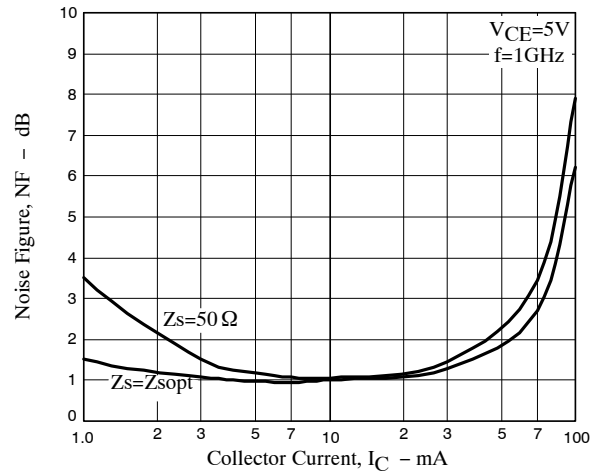


Figure 8. NF vs. I_C

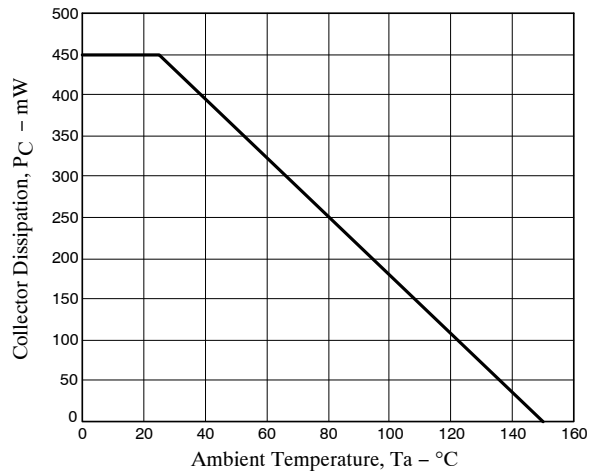


Figure 9. P_C vs. T_A

NSVF4017SG4

S Parameters (Common emitter)

V_{CE}=3V, I_C=10mA

| Freq(MHz) | S11 | ∠S11 | S21 | ∠S21 | S12 | ∠S12 | S22 | ∠S22 |
|-----------|-------|--------|--------|-------|-------|------|-------|--------|
| 100 | 0.763 | -38.0 | 22.980 | 155.3 | 0.018 | 71.5 | 0.923 | -22.7 |
| 200 | 0.733 | -71.8 | 20.122 | 135.9 | 0.031 | 58.6 | 0.798 | -40.2 |
| 300 | 0.702 | -98.5 | 17.019 | 121.3 | 0.038 | 50.6 | 0.703 | -53.5 |
| 400 | 0.690 | -116.5 | 14.110 | 110.7 | 0.043 | 46.3 | 0.626 | -62.9 |
| 500 | 0.701 | -127.2 | 12.307 | 103.5 | 0.048 | 45.0 | 0.592 | -67.4 |
| 600 | 0.679 | -137.1 | 10.431 | 97.5 | 0.050 | 43.7 | 0.531 | -72.0 |
| 700 | 0.663 | -145.1 | 8.949 | 92.7 | 0.052 | 43.6 | 0.484 | -75.2 |
| 800 | 0.651 | -152.1 | 7.848 | 88.4 | 0.054 | 43.9 | 0.446 | -78.7 |
| 900 | 0.646 | -157.6 | 6.993 | 84.8 | 0.057 | 44.0 | 0.422 | -81.6 |
| 1000 | 0.639 | -162.3 | 6.272 | 81.9 | 0.059 | 45.1 | 0.404 | -84.4 |
| 1200 | 0.635 | -170.2 | 5.211 | 76.5 | 0.063 | 47.1 | 0.375 | -88.7 |
| 1400 | 0.634 | -176.5 | 4.462 | 71.7 | 0.068 | 49.1 | 0.362 | -92.4 |
| 1600 | 0.633 | 177.9 | 3.907 | 67.3 | 0.073 | 51.2 | 0.352 | -95.9 |
| 1800 | 0.636 | 173.2 | 3.463 | 63.4 | 0.079 | 52.7 | 0.351 | -99.0 |
| 2000 | 0.637 | 169.1 | 3.122 | 59.5 | 0.085 | 54.3 | 0.352 | -102.3 |
| 2200 | 0.637 | 164.9 | 2.838 | 55.8 | 0.091 | 55.5 | 0.356 | -105.2 |
| 2400 | 0.638 | 161.0 | 2.604 | 52.1 | 0.098 | 56.5 | 0.364 | -108.1 |
| 2600 | 0.639 | 157.3 | 2.413 | 48.7 | 0.105 | 57.2 | 0.372 | -111.1 |
| 2800 | 0.642 | 153.7 | 2.244 | 45.1 | 0.112 | 57.9 | 0.384 | -113.5 |
| 3000 | 0.641 | 150.0 | 2.095 | 41.8 | 0.120 | 57.8 | 0.396 | -116.2 |

NSVF4017SG4

S Parameters (Common emitter)

V_{CE}=3V, I_C=30mA

| Freq(MHz) | S11 | ∠S11 | S21 | ∠S21 | S12 | ∠S12 | S22 | ∠S22 |
|-----------|-------|--------|--------|-------|-------|------|-------|--------|
| 100 | 0.542 | -76.9 | 42.437 | 142.3 | 0.013 | 63.9 | 0.801 | -36.2 |
| 200 | 0.588 | -118.2 | 30.735 | 119.6 | 0.020 | 53.9 | 0.602 | -56.8 |
| 300 | 0.614 | -138.6 | 22.677 | 106.5 | 0.024 | 52.3 | 0.505 | -69.3 |
| 400 | 0.626 | -150.0 | 17.506 | 98.4 | 0.027 | 53.8 | 0.448 | -77.9 |
| 500 | 0.635 | -155.0 | 14.522 | 92.7 | 0.031 | 55.6 | 0.423 | -79.8 |
| 600 | 0.630 | -161.3 | 12.035 | 88.5 | 0.035 | 57.8 | 0.381 | -83.6 |
| 700 | 0.627 | -166.4 | 10.249 | 85.2 | 0.038 | 59.8 | 0.350 | -86.9 |
| 800 | 0.626 | -170.9 | 8.902 | 82.2 | 0.042 | 61.3 | 0.327 | -90.4 |
| 900 | 0.627 | -174.7 | 7.888 | 79.5 | 0.045 | 62.3 | 0.314 | -93.2 |
| 1000 | 0.626 | -177.8 | 7.046 | 77.3 | 0.049 | 63.4 | 0.303 | -96.1 |
| 1200 | 0.629 | 176.7 | 5.835 | 73.1 | 0.057 | 65.4 | 0.287 | -100.4 |
| 1400 | 0.631 | 171.9 | 4.976 | 69.2 | 0.065 | 66.2 | 0.282 | -103.8 |
| 1600 | 0.633 | 167.7 | 4.344 | 65.6 | 0.073 | 66.5 | 0.280 | -106.9 |
| 1800 | 0.637 | 163.9 | 3.854 | 62.0 | 0.082 | 66.8 | 0.281 | -109.7 |
| 2000 | 0.638 | 160.5 | 3.474 | 58.7 | 0.090 | 66.6 | 0.287 | -112.5 |
| 2200 | 0.638 | 156.8 | 3.160 | 55.5 | 0.099 | 66.5 | 0.293 | -115.1 |
| 2400 | 0.640 | 153.5 | 2.900 | 52.2 | 0.108 | 65.8 | 0.302 | -117.3 |
| 2600 | 0.640 | 150.2 | 2.684 | 49.0 | 0.117 | 65.2 | 0.312 | -119.5 |
| 2800 | 0.642 | 146.9 | 2.499 | 45.9 | 0.125 | 64.3 | 0.324 | -121.6 |
| 3000 | 0.640 | 143.6 | 2.337 | 42.8 | 0.134 | 63.6 | 0.337 | -123.8 |

V_{CE}=3V, I_C=50mA

| Freq(MHz) | S11 | ∠S11 | S21 | ∠S21 | S12 | ∠S12 | S22 | ∠S22 |
|-----------|-------|--------|--------|-------|-------|------|-------|--------|
| 100 | 0.514 | -110.3 | 43.067 | 133.3 | 0.011 | 59.0 | 0.700 | -40.9 |
| 200 | 0.607 | -141.4 | 29.221 | 112.3 | 0.016 | 53.1 | 0.495 | -58.9 |
| 300 | 0.642 | -154.9 | 20.818 | 101.0 | 0.019 | 55.3 | 0.417 | -68.7 |
| 400 | 0.657 | -162.5 | 15.865 | 94.1 | 0.023 | 58.5 | 0.376 | -75.5 |
| 500 | 0.660 | -165.8 | 13.033 | 88.9 | 0.027 | 61.4 | 0.360 | -75.7 |
| 600 | 0.659 | -170.3 | 10.812 | 85.3 | 0.030 | 64.0 | 0.330 | -78.7 |
| 700 | 0.658 | -174.3 | 9.213 | 82.3 | 0.034 | 66.1 | 0.307 | -81.5 |
| 800 | 0.660 | -177.8 | 7.995 | 79.5 | 0.038 | 67.8 | 0.291 | -84.5 |
| 900 | 0.663 | 179.2 | 7.097 | 77.1 | 0.042 | 68.6 | 0.284 | -87.1 |
| 1000 | 0.662 | 176.6 | 6.333 | 74.8 | 0.046 | 69.6 | 0.277 | -89.7 |
| 1200 | 0.666 | 172.0 | 5.247 | 70.8 | 0.055 | 70.9 | 0.268 | -93.7 |
| 1400 | 0.670 | 167.9 | 4.475 | 67.0 | 0.063 | 71.3 | 0.269 | -97.1 |
| 1600 | 0.673 | 164.1 | 3.897 | 63.4 | 0.072 | 71.5 | 0.270 | -100.2 |
| 1800 | 0.676 | 160.6 | 3.469 | 59.9 | 0.080 | 71.4 | 0.275 | -103.3 |
| 2000 | 0.678 | 157.5 | 3.113 | 56.5 | 0.089 | 71.0 | 0.284 | -106.5 |
| 2200 | 0.679 | 154.1 | 2.836 | 53.1 | 0.098 | 70.4 | 0.293 | -109.3 |
| 2400 | 0.681 | 150.9 | 2.598 | 49.8 | 0.107 | 69.8 | 0.304 | -111.9 |
| 2600 | 0.682 | 147.8 | 2.404 | 46.6 | 0.116 | 68.9 | 0.316 | -114.4 |
| 2800 | 0.683 | 144.6 | 2.241 | 43.4 | 0.125 | 67.8 | 0.330 | -117.0 |
| 3000 | 0.682 | 141.3 | 2.094 | 40.3 | 0.135 | 66.8 | 0.346 | -119.6 |

NSVF4017SG4

S Parameters (Common emitter)

V_{CE}=3V, I_C=80mA

| Freq(MHz) | S11 | ∠S11 | S21 | ∠S21 | S12 | ∠S12 | S22 | ∠S22 |
|-----------|-------|--------|--------|-------|-------|------|-------|--------|
| 100 | 0.662 | -146.8 | 29.622 | 120.5 | 0.011 | 47.5 | 0.455 | -44.8 |
| 200 | 0.751 | -164.0 | 16.762 | 102.8 | 0.014 | 46.9 | 0.315 | -52.9 |
| 300 | 0.774 | -171.2 | 11.369 | 94.2 | 0.017 | 52.5 | 0.288 | -57.1 |
| 400 | 0.783 | -175.6 | 8.549 | 88.9 | 0.019 | 58.6 | 0.279 | -61.3 |
| 500 | 0.778 | -178.0 | 6.977 | 84.2 | 0.023 | 62.0 | 0.283 | -61.0 |
| 600 | 0.778 | 179.0 | 5.801 | 81.0 | 0.027 | 66.0 | 0.272 | -62.9 |
| 700 | 0.778 | 176.3 | 4.965 | 78.3 | 0.030 | 68.6 | 0.265 | -65.2 |
| 800 | 0.780 | 173.9 | 4.316 | 75.7 | 0.034 | 70.2 | 0.260 | -68.0 |
| 900 | 0.782 | 171.6 | 3.846 | 73.3 | 0.038 | 71.9 | 0.263 | -70.7 |
| 1000 | 0.782 | 169.6 | 3.439 | 71.0 | 0.042 | 73.0 | 0.263 | -73.7 |
| 1200 | 0.787 | 166.0 | 2.860 | 66.6 | 0.051 | 74.5 | 0.268 | -78.5 |
| 1400 | 0.789 | 162.5 | 2.454 | 62.4 | 0.059 | 75.3 | 0.278 | -83.1 |
| 1600 | 0.792 | 159.2 | 2.139 | 58.4 | 0.068 | 75.7 | 0.288 | -87.5 |
| 1800 | 0.796 | 156.0 | 1.912 | 54.5 | 0.077 | 75.7 | 0.300 | -91.7 |
| 2000 | 0.797 | 153.1 | 1.721 | 50.8 | 0.086 | 75.4 | 0.314 | -96.1 |
| 2200 | 0.797 | 149.9 | 1.569 | 47.1 | 0.095 | 75.0 | 0.328 | -100.0 |
| 2400 | 0.799 | 146.8 | 1.436 | 43.4 | 0.105 | 74.1 | 0.343 | -103.8 |
| 2600 | 0.800 | 143.8 | 1.331 | 39.9 | 0.115 | 73.4 | 0.359 | -107.4 |
| 2800 | 0.801 | 140.6 | 1.238 | 36.5 | 0.125 | 72.2 | 0.377 | -110.9 |
| 3000 | 0.799 | 137.4 | 1.157 | 33.3 | 0.135 | 71.1 | 0.394 | -114.4 |

V_{CE}=5V, I_C=10mA

| Freq(MHz) | S11 | ∠S11 | S21 | ∠S21 | S12 | ∠S12 | S22 | ∠S22 |
|-----------|-------|--------|--------|-------|-------|------|-------|--------|
| 100 | 0.771 | -35.8 | 23.180 | 156.3 | 0.016 | 72.7 | 0.933 | -20.3 |
| 200 | 0.741 | -68.2 | 20.484 | 137.3 | 0.028 | 60.4 | 0.820 | -36.2 |
| 300 | 0.706 | -94.4 | 17.503 | 122.8 | 0.035 | 53.0 | 0.722 | -48.5 |
| 400 | 0.691 | -112.7 | 14.633 | 111.9 | 0.040 | 48.5 | 0.656 | -57.3 |
| 500 | 0.701 | -123.8 | 12.817 | 104.7 | 0.044 | 47.2 | 0.622 | -61.7 |
| 600 | 0.677 | -133.9 | 10.891 | 98.4 | 0.047 | 46.0 | 0.560 | -66.0 |
| 700 | 0.659 | -142.2 | 9.349 | 93.5 | 0.049 | 45.5 | 0.513 | -68.9 |
| 800 | 0.646 | -149.5 | 8.209 | 89.1 | 0.051 | 45.7 | 0.474 | -72.0 |
| 900 | 0.640 | -155.2 | 7.315 | 85.3 | 0.053 | 46.1 | 0.449 | -74.7 |
| 1000 | 0.633 | -160.1 | 6.557 | 82.3 | 0.055 | 46.9 | 0.428 | -77.4 |
| 1200 | 0.628 | -168.2 | 5.459 | 76.8 | 0.060 | 49.0 | 0.399 | -81.4 |
| 1400 | 0.625 | -174.7 | 4.663 | 71.9 | 0.064 | 51.0 | 0.385 | -84.9 |
| 1600 | 0.625 | 179.5 | 4.086 | 67.5 | 0.069 | 53.3 | 0.373 | -88.4 |
| 1800 | 0.627 | 174.7 | 3.616 | 63.5 | 0.075 | 54.8 | 0.372 | -91.5 |
| 2000 | 0.628 | 170.5 | 3.260 | 59.5 | 0.080 | 56.6 | 0.372 | -94.9 |
| 2200 | 0.628 | 166.2 | 2.960 | 55.7 | 0.086 | 57.9 | 0.376 | -98.0 |
| 2400 | 0.630 | 162.2 | 2.715 | 52.0 | 0.093 | 58.9 | 0.383 | -101.1 |
| 2600 | 0.631 | 158.5 | 2.517 | 48.5 | 0.100 | 59.8 | 0.391 | -104.3 |
| 2800 | 0.634 | 154.8 | 2.337 | 44.9 | 0.107 | 60.4 | 0.402 | -107.0 |
| 3000 | 0.633 | 151.1 | 2.180 | 41.5 | 0.115 | 60.6 | 0.416 | -109.9 |

NSVF4017SG4

S Parameters (Common emitter)

V_{CE}=5V, I_C=30mA

| Freq(MHz) | S11 | ∠S11 | S21 | ∠S21 | S12 | ∠S12 | S22 | ∠S22 |
|-----------|-------|--------|--------|-------|-------|------|-------|--------|
| 100 | 0.542 | -70.6 | 43.013 | 144.3 | 0.012 | 66.3 | 0.826 | -31.8 |
| 200 | 0.577 | -112.5 | 32.303 | 121.4 | 0.018 | 56.3 | 0.636 | -50.4 |
| 300 | 0.599 | -134.2 | 24.068 | 107.8 | 0.022 | 55.0 | 0.539 | -61.6 |
| 400 | 0.611 | -146.5 | 18.636 | 99.4 | 0.025 | 55.5 | 0.478 | -69.3 |
| 500 | 0.620 | -151.9 | 15.457 | 93.6 | 0.029 | 57.7 | 0.454 | -71.4 |
| 600 | 0.614 | -158.6 | 12.813 | 89.2 | 0.033 | 59.6 | 0.410 | -74.7 |
| 700 | 0.611 | -164.1 | 10.898 | 85.6 | 0.036 | 61.5 | 0.376 | -77.5 |
| 800 | 0.610 | -168.7 | 9.470 | 82.5 | 0.039 | 62.9 | 0.351 | -80.5 |
| 900 | 0.611 | -172.7 | 8.381 | 79.8 | 0.043 | 64.1 | 0.337 | -83.2 |
| 1000 | 0.610 | -176.0 | 7.487 | 77.5 | 0.047 | 65.3 | 0.324 | -85.8 |
| 1200 | 0.612 | 178.3 | 6.186 | 73.2 | 0.054 | 66.8 | 0.306 | -89.7 |
| 1400 | 0.615 | 173.4 | 5.277 | 69.2 | 0.062 | 67.7 | 0.299 | -93.1 |
| 1600 | 0.617 | 169.0 | 4.596 | 65.6 | 0.070 | 68.2 | 0.296 | -96.3 |
| 1800 | 0.620 | 165.1 | 4.085 | 62.0 | 0.078 | 68.6 | 0.297 | -99.3 |
| 2000 | 0.622 | 161.6 | 3.669 | 58.7 | 0.086 | 68.4 | 0.301 | -102.5 |
| 2200 | 0.622 | 158.0 | 3.344 | 55.5 | 0.095 | 68.3 | 0.307 | -105.1 |
| 2400 | 0.625 | 154.6 | 3.065 | 52.1 | 0.103 | 67.8 | 0.316 | -107.9 |
| 2600 | 0.625 | 151.3 | 2.835 | 48.8 | 0.112 | 67.2 | 0.326 | -110.5 |
| 2800 | 0.628 | 148.0 | 2.638 | 45.7 | 0.120 | 66.5 | 0.339 | -113.0 |
| 3000 | 0.626 | 144.6 | 2.464 | 42.6 | 0.129 | 65.6 | 0.352 | -115.5 |

V_{CE}=5V, I_C=50mA

| Freq(MHz) | S11 | ∠S11 | S21 | ∠S21 | S12 | ∠S12 | S22 | ∠S22 |
|-----------|-------|--------|--------|-------|-------|------|-------|--------|
| 100 | 0.479 | -97.2 | 42.927 | 137.2 | 0.010 | 63.4 | 0.761 | -35.0 |
| 200 | 0.566 | -132.9 | 32.978 | 115.4 | 0.015 | 56.7 | 0.560 | -51.6 |
| 300 | 0.603 | -148.8 | 23.718 | 103.2 | 0.018 | 58.0 | 0.485 | -60.6 |
| 400 | 0.620 | -157.8 | 18.120 | 95.7 | 0.021 | 60.4 | 0.427 | -66.9 |
| 500 | 0.625 | -161.4 | 14.893 | 90.4 | 0.025 | 63.7 | 0.410 | -68.0 |
| 600 | 0.624 | -166.7 | 12.324 | 86.4 | 0.029 | 66.0 | 0.375 | -70.7 |
| 700 | 0.624 | -171.0 | 10.482 | 83.2 | 0.032 | 68.0 | 0.348 | -73.2 |
| 800 | 0.626 | -174.8 | 9.088 | 80.4 | 0.036 | 69.2 | 0.328 | -75.9 |
| 900 | 0.628 | -178.1 | 8.053 | 77.9 | 0.040 | 70.4 | 0.317 | -78.4 |
| 1000 | 0.628 | 179.1 | 7.184 | 75.6 | 0.044 | 70.9 | 0.308 | -80.9 |
| 1200 | 0.633 | 174.2 | 5.943 | 71.5 | 0.052 | 72.2 | 0.295 | -84.6 |
| 1400 | 0.636 | 169.8 | 5.061 | 67.7 | 0.060 | 72.7 | 0.292 | -88.2 |
| 1600 | 0.640 | 165.9 | 4.407 | 64.1 | 0.069 | 72.7 | 0.292 | -91.5 |
| 1800 | 0.643 | 162.3 | 3.917 | 60.6 | 0.077 | 72.6 | 0.295 | -94.7 |
| 2000 | 0.645 | 159.1 | 3.518 | 57.2 | 0.086 | 72.3 | 0.301 | -98.1 |
| 2200 | 0.646 | 155.6 | 3.202 | 54.0 | 0.094 | 71.8 | 0.309 | -101.1 |
| 2400 | 0.648 | 152.4 | 2.931 | 50.6 | 0.103 | 71.1 | 0.319 | -104.0 |
| 2600 | 0.650 | 149.3 | 2.708 | 47.3 | 0.112 | 70.3 | 0.331 | -106.8 |
| 2800 | 0.652 | 146.0 | 2.520 | 44.2 | 0.121 | 69.3 | 0.344 | -109.6 |
| 3000 | 0.650 | 142.7 | 2.353 | 41.1 | 0.130 | 68.2 | 0.358 | -112.5 |

NSVF4017SG4

S Parameters (Common emitter)

V_{CE}=5V, I_C=80mA

| Freq(MHz) | S11 | ∠S11 | S21 | ∠S21 | S12 | ∠S12 | S22 | ∠S22 |
|-----------|-------|--------|--------|-------|-------|------|-------|--------|
| 100 | 0.558 | -133.0 | 39.014 | 127.8 | 0.009 | 54.5 | 0.618 | -33.7 |
| 200 | 0.671 | -155.6 | 23.364 | 107.6 | 0.012 | 52.6 | 0.457 | -41.5 |
| 300 | 0.704 | -165.1 | 16.107 | 97.6 | 0.014 | 57.5 | 0.415 | -45.4 |
| 400 | 0.718 | -170.7 | 12.150 | 91.5 | 0.017 | 62.9 | 0.395 | -49.0 |
| 500 | 0.716 | -173.4 | 9.907 | 86.7 | 0.021 | 66.8 | 0.385 | -50.4 |
| 600 | 0.717 | -177.0 | 8.214 | 83.3 | 0.024 | 69.5 | 0.378 | -52.4 |
| 700 | 0.718 | 179.9 | 7.015 | 80.4 | 0.028 | 72.5 | 0.364 | -54.4 |
| 800 | 0.720 | 177.1 | 6.091 | 77.8 | 0.031 | 73.9 | 0.354 | -57.0 |
| 900 | 0.723 | 174.5 | 5.413 | 75.3 | 0.035 | 75.7 | 0.351 | -59.7 |
| 1000 | 0.723 | 172.3 | 4.829 | 72.9 | 0.039 | 76.8 | 0.346 | -62.4 |
| 1200 | 0.728 | 168.3 | 4.009 | 68.8 | 0.047 | 78.1 | 0.343 | -67.0 |
| 1400 | 0.731 | 164.7 | 3.423 | 64.7 | 0.055 | 78.9 | 0.347 | -71.8 |
| 1600 | 0.735 | 161.2 | 2.987 | 60.8 | 0.063 | 78.9 | 0.352 | -76.2 |
| 1800 | 0.738 | 157.9 | 2.662 | 57.1 | 0.072 | 79.1 | 0.359 | -80.6 |
| 2000 | 0.740 | 155.0 | 2.393 | 53.5 | 0.081 | 78.7 | 0.369 | -85.3 |
| 2200 | 0.741 | 151.7 | 2.179 | 50.0 | 0.090 | 78.2 | 0.379 | -89.5 |
| 2400 | 0.743 | 148.6 | 1.993 | 46.4 | 0.099 | 77.4 | 0.391 | -93.5 |
| 2600 | 0.744 | 145.6 | 1.843 | 43.0 | 0.109 | 76.5 | 0.404 | -97.4 |
| 2800 | 0.746 | 142.4 | 1.716 | 39.6 | 0.119 | 75.4 | 0.418 | -101.3 |
| 3000 | 0.744 | 139.2 | 1.601 | 36.3 | 0.129 | 74.2 | 0.433 | -105.1 |

V_{CE}=8V, I_C=10mA

| Freq(MHz) | S11 | ∠S11 | S21 | ∠S21 | S12 | ∠S12 | S22 | ∠S22 |
|-----------|-------|--------|--------|-------|-------|------|-------|--------|
| 100 | 0.784 | -33.9 | 22.973 | 157.1 | 0.014 | 73.5 | 0.941 | -18.1 |
| 200 | 0.754 | -64.8 | 20.491 | 138.6 | 0.025 | 62.4 | 0.839 | -32.6 |
| 300 | 0.715 | -90.5 | 17.690 | 124.1 | 0.032 | 55.0 | 0.739 | -44.1 |
| 400 | 0.697 | -109.0 | 14.905 | 113.1 | 0.037 | 50.3 | 0.685 | -52.2 |
| 500 | 0.704 | -120.4 | 13.108 | 105.8 | 0.041 | 49.3 | 0.652 | -56.5 |
| 600 | 0.678 | -130.9 | 11.176 | 99.3 | 0.044 | 47.7 | 0.591 | -60.6 |
| 700 | 0.659 | -139.5 | 9.599 | 94.2 | 0.046 | 47.3 | 0.544 | -63.3 |
| 800 | 0.645 | -146.9 | 8.439 | 89.7 | 0.048 | 47.3 | 0.504 | -66.1 |
| 900 | 0.638 | -152.9 | 7.523 | 85.8 | 0.050 | 47.5 | 0.478 | -68.7 |
| 1000 | 0.629 | -158.0 | 6.746 | 82.7 | 0.052 | 48.6 | 0.457 | -71.2 |
| 1200 | 0.623 | -166.3 | 5.618 | 77.1 | 0.056 | 50.5 | 0.427 | -75.0 |
| 1400 | 0.621 | -173.1 | 4.797 | 72.1 | 0.060 | 52.6 | 0.411 | -78.5 |
| 1600 | 0.620 | -179.0 | 4.199 | 67.5 | 0.065 | 55.0 | 0.399 | -81.8 |
| 1800 | 0.622 | 176.1 | 3.717 | 63.4 | 0.071 | 56.9 | 0.398 | -85.2 |
| 2000 | 0.623 | 171.8 | 3.348 | 59.4 | 0.076 | 58.6 | 0.397 | -88.5 |
| 2200 | 0.623 | 167.4 | 3.039 | 55.5 | 0.082 | 60.1 | 0.401 | -91.7 |
| 2400 | 0.625 | 163.5 | 2.786 | 51.8 | 0.089 | 61.4 | 0.407 | -95.0 |
| 2600 | 0.626 | 159.6 | 2.581 | 48.2 | 0.096 | 62.2 | 0.415 | -98.3 |
| 2800 | 0.629 | 155.9 | 2.395 | 44.6 | 0.103 | 62.8 | 0.426 | -101.3 |
| 3000 | 0.629 | 152.2 | 2.233 | 41.1 | 0.111 | 63.0 | 0.439 | -104.4 |

NSVF4017SG4

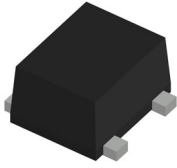
S Parameters (Common emitter)

V_{CE}=8V, I_C=30mA

| Freq(MHz) | S11 | ∠S11 | S21 | ∠S21 | S12 | ∠S12 | S22 | ∠S22 |
|-----------|-------|--------|--------|-------|-------|------|-------|--------|
| 100 | 0.556 | -65.2 | 43.179 | 145.8 | 0.011 | 67.8 | 0.846 | -28.0 |
| 200 | 0.578 | -106.8 | 32.894 | 123.0 | 0.017 | 57.9 | 0.669 | -44.6 |
| 300 | 0.594 | -129.7 | 24.775 | 109.1 | 0.021 | 56.2 | 0.584 | -54.7 |
| 400 | 0.604 | -142.8 | 19.256 | 100.3 | 0.024 | 57.0 | 0.512 | -61.6 |
| 500 | 0.614 | -148.7 | 15.997 | 94.4 | 0.028 | 59.0 | 0.488 | -63.9 |
| 600 | 0.606 | -155.8 | 13.266 | 89.8 | 0.031 | 60.8 | 0.443 | -66.9 |
| 700 | 0.603 | -161.6 | 11.285 | 86.1 | 0.034 | 62.5 | 0.409 | -69.3 |
| 800 | 0.602 | -166.5 | 9.802 | 82.9 | 0.037 | 64.2 | 0.382 | -72.0 |
| 900 | 0.602 | -170.7 | 8.672 | 80.0 | 0.041 | 65.4 | 0.366 | -74.3 |
| 1000 | 0.600 | -174.1 | 7.739 | 77.6 | 0.044 | 66.3 | 0.352 | -76.7 |
| 1200 | 0.603 | 179.9 | 6.401 | 73.3 | 0.051 | 68.1 | 0.333 | -80.3 |
| 1400 | 0.605 | 174.9 | 5.453 | 69.2 | 0.059 | 69.2 | 0.325 | -83.7 |
| 1600 | 0.607 | 170.4 | 4.753 | 65.4 | 0.066 | 69.8 | 0.321 | -87.0 |
| 1800 | 0.611 | 166.4 | 4.215 | 61.8 | 0.074 | 70.0 | 0.321 | -90.2 |
| 2000 | 0.613 | 162.9 | 3.791 | 58.4 | 0.082 | 69.9 | 0.325 | -93.4 |
| 2200 | 0.614 | 159.2 | 3.445 | 55.1 | 0.090 | 70.1 | 0.330 | -96.5 |
| 2400 | 0.616 | 155.8 | 3.155 | 51.7 | 0.099 | 69.6 | 0.339 | -99.4 |
| 2600 | 0.617 | 152.4 | 2.916 | 48.4 | 0.107 | 69.1 | 0.349 | -102.4 |
| 2800 | 0.619 | 149.1 | 2.711 | 45.2 | 0.115 | 68.5 | 0.361 | -105.3 |
| 3000 | 0.619 | 145.7 | 2.531 | 42.0 | 0.124 | 67.5 | 0.375 | -108.2 |

V_{CE}=8V, I_C=50mA

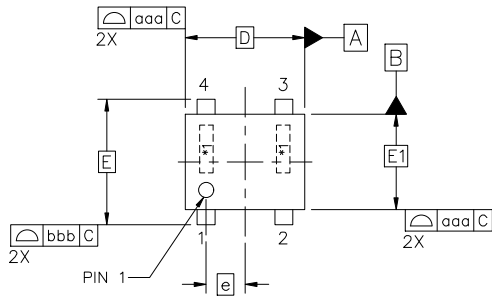
| Freq(MHz) | S11 | ∠S11 | S21 | ∠S21 | S12 | ∠S12 | S22 | ∠S22 |
|-----------|-------|--------|--------|-------|-------|------|-------|--------|
| 100 | 0.477 | -88.8 | 42.926 | 139.6 | 0.009 | 65.5 | 0.793 | -30.4 |
| 200 | 0.554 | -127.0 | 34.154 | 117.2 | 0.014 | 59.2 | 0.603 | -45.1 |
| 300 | 0.589 | -144.5 | 24.758 | 104.4 | 0.017 | 59.1 | 0.529 | -53.1 |
| 400 | 0.606 | -154.4 | 18.954 | 96.6 | 0.020 | 61.9 | 0.478 | -58.7 |
| 500 | 0.613 | -158.4 | 15.585 | 91.2 | 0.024 | 64.8 | 0.453 | -60.2 |
| 600 | 0.611 | -164.1 | 12.888 | 87.0 | 0.027 | 67.3 | 0.416 | -62.6 |
| 700 | 0.611 | -168.8 | 10.954 | 83.7 | 0.031 | 69.1 | 0.388 | -64.8 |
| 800 | 0.613 | -172.8 | 9.503 | 80.7 | 0.034 | 70.4 | 0.366 | -67.2 |
| 900 | 0.616 | -176.3 | 8.407 | 78.1 | 0.038 | 71.5 | 0.355 | -69.5 |
| 1000 | 0.615 | -179.2 | 7.494 | 75.7 | 0.042 | 72.3 | 0.343 | -71.9 |
| 1200 | 0.619 | 175.7 | 6.192 | 71.6 | 0.049 | 73.7 | 0.329 | -75.5 |
| 1400 | 0.623 | 171.2 | 5.272 | 67.7 | 0.057 | 74.1 | 0.324 | -79.0 |
| 1600 | 0.626 | 167.2 | 4.586 | 64.0 | 0.065 | 74.5 | 0.323 | -82.4 |
| 1800 | 0.631 | 163.5 | 4.071 | 60.4 | 0.073 | 74.4 | 0.325 | -85.8 |
| 2000 | 0.633 | 160.2 | 3.658 | 57.0 | 0.081 | 74.0 | 0.331 | -89.4 |
| 2200 | 0.634 | 156.7 | 3.322 | 53.7 | 0.090 | 73.7 | 0.337 | -92.7 |
| 2400 | 0.637 | 153.5 | 3.041 | 50.3 | 0.099 | 73.0 | 0.347 | -95.9 |
| 2600 | 0.638 | 150.3 | 2.809 | 47.0 | 0.107 | 72.2 | 0.358 | -99.1 |
| 2800 | 0.641 | 147.0 | 2.611 | 43.8 | 0.116 | 71.3 | 0.371 | -102.3 |
| 3000 | 0.640 | 143.7 | 2.435 | 40.7 | 0.125 | 70.4 | 0.386 | -105.5 |



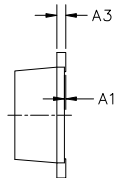
SC-82FL/MCPH4, 2.00X1.60X0.85 0.65P

CASE 419AR
ISSUE A

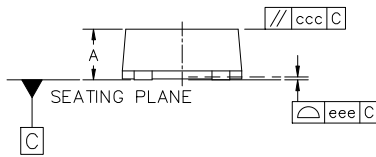
DATE 20 SEP 2024



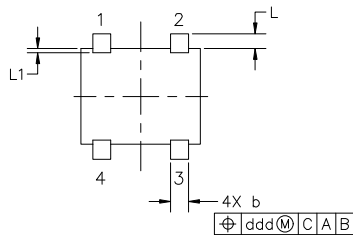
TOP VIEW



END VIEW

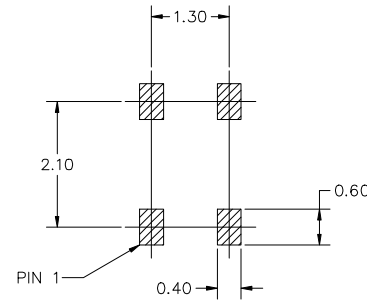


SIDE VIEW



BOTTOM VIEW

| MILLIMETERS | | | |
|-----------------------------|----------|------|------|
| DIM | MIN | NOM | MAX |
| A | 0.80 | 0.85 | 0.90 |
| A1 | 0.00 | --- | 0.02 |
| A3 | 0.12 | 0.15 | 0.25 |
| b | 0.25 | 0.30 | 0.40 |
| D | 2.00 BSC | | |
| E | 2.10 BSC | | |
| E1 | 1.60 BSC | | |
| e | 0.65 BSC | | |
| L | 0.19 | 0.25 | 0.31 |
| L1 | 0.00 | 0.07 | 0.12 |
| TOLERANCE FORM AND POSITION | | | |
| aaa | 0.06 | | |
| bbb | 0.05 | | |
| ccc | 0.05 | | |
| ddd | 0.10 | | |
| eee | 0.05 | | |



RECOMMENDED MOUNTING FOOTPRINT

NOTES:

1. DIMENSIONING AND TOLERANCING PER ASME Y14.5M, 2018.
2. CONTROLLING DIMENSION: MILLIMETERS
3. *1 IS FOR LOT INDICATION

* For additional information on our Pb-Free strategy and soldering details, please download the onsemi Soldering and Mounting Techniques Reference Manual, SOLDERRM/D.

| | | |
|-------------------------|--|--|
| DOCUMENT NUMBER: | 98AON65645E | Electronic versions are uncontrolled except when accessed directly from the Document Repository. Printed versions are uncontrolled except when stamped "CONTROLLED COPY" in red. |
| DESCRIPTION: | SC-82FL/MCPH4, 2.00X1.60X0.85 0.65P | PAGE 1 OF 1 |

onsemi and ONSEMI are trademarks of Semiconductor Components Industries, LLC dba onsemi or its subsidiaries in the United States and/or other countries. onsemi reserves the right to make changes without further notice to any products herein. onsemi makes no warranty, representation or guarantee regarding the suitability of its products for any particular purpose, nor does onsemi assume any liability arising out of the application or use of any product or circuit, and specifically disclaims any and all liability, including without limitation special, consequential or incidental damages. onsemi does not convey any license under its patent rights nor the rights of others.

onsemi, **Onsemi**, and other names, marks, and brands are registered and/or common law trademarks of Semiconductor Components Industries, LLC dba "**onsemi**" or its affiliates and/or subsidiaries in the United States and/or other countries. **onsemi** owns the rights to a number of patents, trademarks, copyrights, trade secrets, and other intellectual property. A listing of **onsemi**'s product/patent coverage may be accessed at www.onsemi.com/site/pdf/Patent-Marking.pdf. **onsemi** reserves the right to make changes at any time to any products or information herein, without notice. The information herein is provided "as-is" and **onsemi** makes no warranty, representation or guarantee regarding the accuracy of the information, product features, availability, functionality, or suitability of its products for any particular purpose, nor does **onsemi** assume any liability arising out of the application or use of any product or circuit, and specifically disclaims any and all liability, including without limitation special, consequential or incidental damages. Buyer is responsible for its products and applications using **onsemi** products, including compliance with all laws, regulations and safety requirements or standards, regardless of any support or applications information provided by **onsemi**. "Typical" parameters which may be provided in **onsemi** data sheets and/or specifications can and do vary in different applications and actual performance may vary over time. All operating parameters, including "Typicals" must be validated for each customer application by customer's technical experts. **onsemi** does not convey any license under any of its intellectual property rights nor the rights of others. **onsemi** products are not designed, intended, or authorized for use as a critical component in life support systems or any FDA Class 3 medical devices or medical devices with a same or similar classification in a foreign jurisdiction or any devices intended for implantation in the human body. Should Buyer purchase or use **onsemi** products for any such unintended or unauthorized application, Buyer shall indemnify and hold **onsemi** and its officers, employees, subsidiaries, affiliates, and distributors harmless against all claims, costs, damages, and expenses, and reasonable attorney fees arising out of, directly or indirectly, any claim of personal injury or death associated with such unintended or unauthorized use, even if such claim alleges that **onsemi** was negligent regarding the design or manufacture of the part. **onsemi** is an Equal Opportunity/Affirmative Action Employer. This literature is subject to all applicable copyright laws and is not for resale in any manner.

ADDITIONAL INFORMATION

TECHNICAL PUBLICATIONS:

Technical Library: www.onsemi.com/design/resources/technical-documentation
onsemi Website: www.onsemi.com

ONLINE SUPPORT: www.onsemi.com/support

For additional information, please contact your local Sales Representative at www.onsemi.com/support/sales

