

RF SPDT Switch MMIC

NSG1001MX, NSVG1001MX

This device is single pole dual throw (SPDT) type RF antenna switch MMIC. It has low insertion loss and high isolation. This is designed for wireless communication applications such as WLAN and V2X.

It adopts a small surface mount package and it is also suitable for portable devices such as smart phones and automotive antennas.

Features

- Broadband Frequency Range 0.1 to 8.5 GHz
- Capable of 1.6 V Operation
- Low Insertion Loss / High Isolation / Middle Power
- Small and Thin-sized Package – 1.0 x 1.0 x 0.43 mm
- Wettable Flank Package for Optimal Automated Optical Inspection (AOI)
- NSV Prefix for Automotive and Other Applications Requiring Unique Site and Control Change Requirements; AEC-Q100 Qualified and PPAP Capable
- These Devices are Pb-Free, Halogen Free/BFR Free and are RoHS Compliant

Typical Applications

- IEEE802.11 a/b/g/n/ac/ax WLAN, Bluetooth® Systems
- LTE & Wireless Communication Applications
- Automotive V2X and E-TOLL Applications

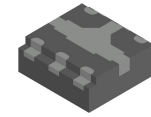
MAXIMUM RATINGS (T_A = 25°C unless otherwise noted)

| Parameter | Symbol | Value | Unit |
|-----------------------------|------------------|-------------|------|
| Control Voltage | V _{CTL} | 6 | V |
| Input Power 5 V, CW | P _{in} | 30 | dBm |
| Storage Temperature Range | T _{stg} | -55 to +150 | °C |
| Operating Temperature Range | T _{opr} | -40 to +125 | °C |

Stresses exceeding those listed in the Maximum Ratings table may damage the device. If any of these limits are exceeded, device functionality should not be assumed, damage may occur and reliability may be affected.

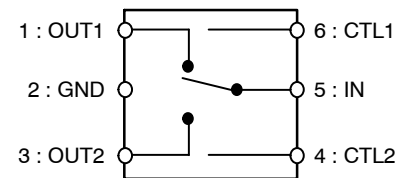
TRUTH TABLE

| On Path | V _{CTL1} | V _{CTL2} |
|-----------|-------------------|-------------------|
| IN – OUT1 | Low | High |
| IN – OUT2 | High | Low |

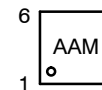


XDFNW
 MX SUFFIX
 CASE 717AE

ELECTRICAL CONNECTION



MARKING DIAGRAM



AA = Specific Device Code
 M = Date Code

ORDERING INFORMATION

| Device | Package | Shipping† |
|---------------|-------------------|--------------------|
| NSG1001MXTAG | X2DFNW6 (Pb-Free) | 3000 / Tape & Reel |
| NSVG1001MXTAG | X2DFNW6 (Pb-Free) | 3000 / Tape & Reel |

†For information on tape and reel specifications, including part orientation and tape sizes, please refer to our Tape and Reel Packaging Specification Brochure, BRD8011/D.

NSG1001MX, NSVG1001MX

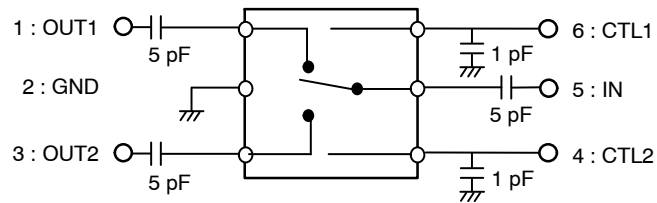
ELECTRICAL CHARACTERISTICS at $T_A = 25^\circ\text{C}$ Control Voltage: 0/+2.7 V, DC Blocking Capacitor 5.0 pF

| Parameter | Symbol | Path | Condition | Value | | | Unit |
|--------------------------------|------------|-----------------------|-------------|-------|------|------|---------------|
| | | | | Min | Typ | Max | |
| Insertion Loss | IL | IN to OUT1, OUT2 | f = 2.5 GHz | | 0.40 | 0.55 | dB |
| | | | f = 6.0 GHz | | 0.50 | 0.65 | |
| | | | f = 8.5 GHz | | 0.65 | 0.85 | |
| Isolation | ISL | IN to OUT1, OUT2 | f = 2.5 GHz | 28.0 | 31.0 | | dB |
| | | | f = 6.0 GHz | 26.5 | 29.5 | | |
| | | | f = 8.5 GHz | 17.0 | 20.0 | | |
| Return Loss | RL | | f = 2.5 GHz | | 25.0 | | dB |
| | | | f = 6.0 GHz | | 20.0 | | |
| | | | f = 8.5 GHz | | 18.0 | | |
| 0.1 dB Compression Input Power | Pin 0.1 dB | IN to OUT1, OUT2 | f = 2.5 GHz | 25.0 | 27.0 | | dBm |
| | | | f = 6.0 GHz | 25.0 | 27.0 | | |
| Switching Time | | 50% VCTL to 90/10% RF | | | 100 | | ns |
| Switching Control Current | I_{CTL} | | No Signal | | 2.0 | 5.0 | μA |

Product parametric performance is indicated in the Electrical Characteristics for the listed test conditions, unless otherwise noted. Product performance may not be indicated by the Electrical Characteristics if operated under different conditions.

1. Pay attention to handling since it is liable to be affected by static electricity due to the high-frequency process adopted.

TEST CIRCUIT



NSG1001MX, NSVG1001MX

ELECTRICAL CHARACTERISTICS

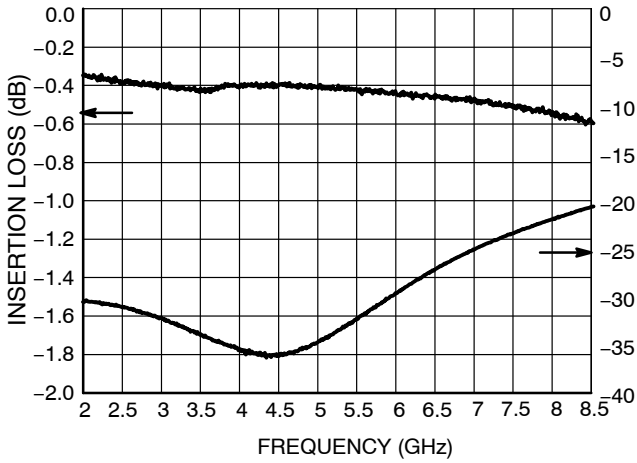


Figure 1. Insertion Loss, Isolation vs Frequency
IN-OUT1 ON, CTL1 = 0 V, CTL2 = 2.7 V

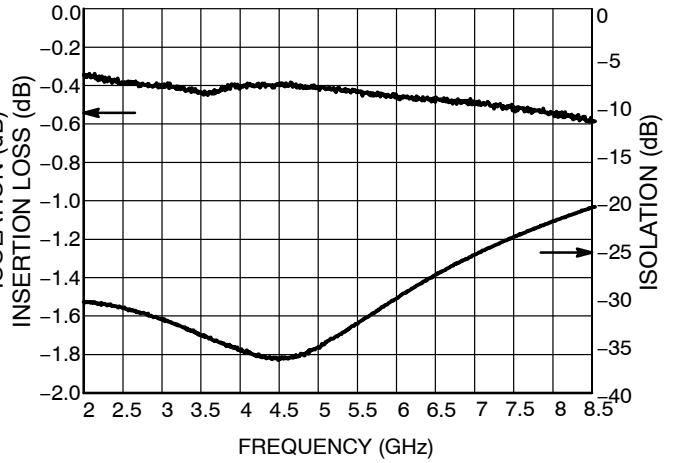


Figure 2. Insertion Loss, Isolation vs Frequency
IN-OUT2 ON, CTL1 = 2.7 V, CTL2 = 0 V

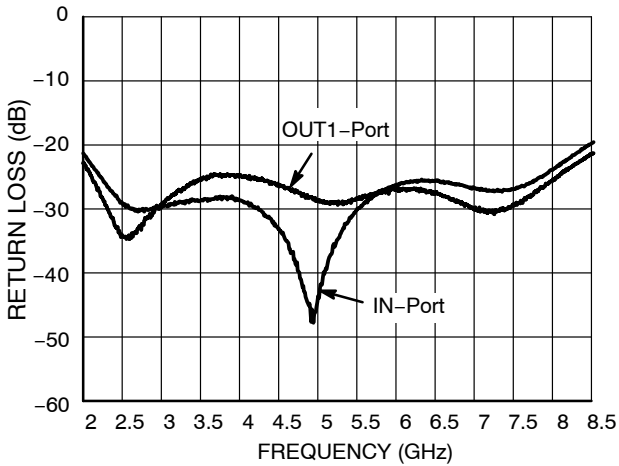


Figure 3. Return Loss vs Frequency
IN-OUT1 ON, CTL1 = 0 V, CTL2 = 2.7 V

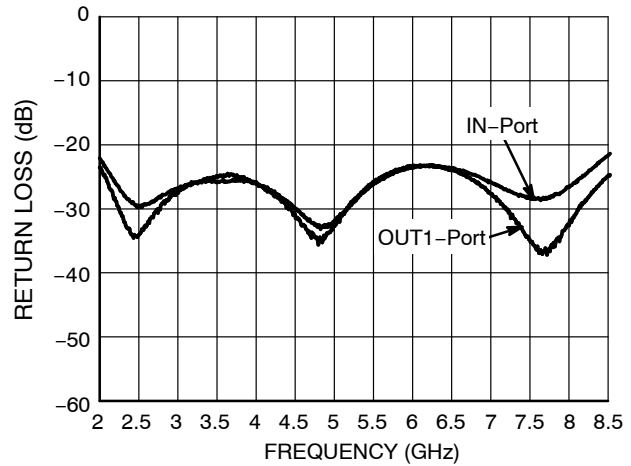


Figure 4. Return Loss vs Frequency
IN-OUT2 ON, CTL1 = 2.7 V, CTL2 = 0 V

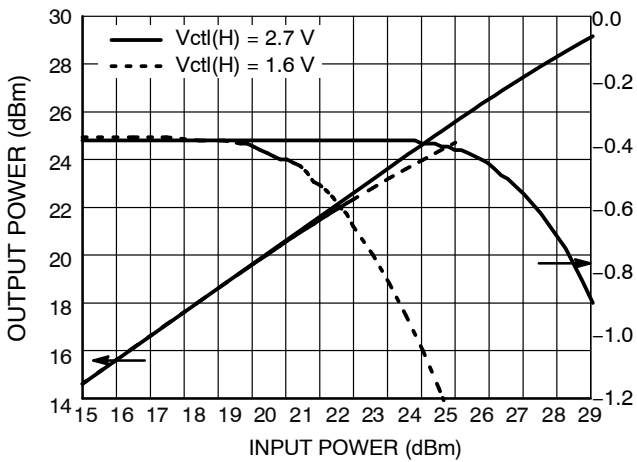


Figure 5. Output power, Insertion Loss vs Input Power
Freq = 2.5 GHz, IN-OUT1 ON

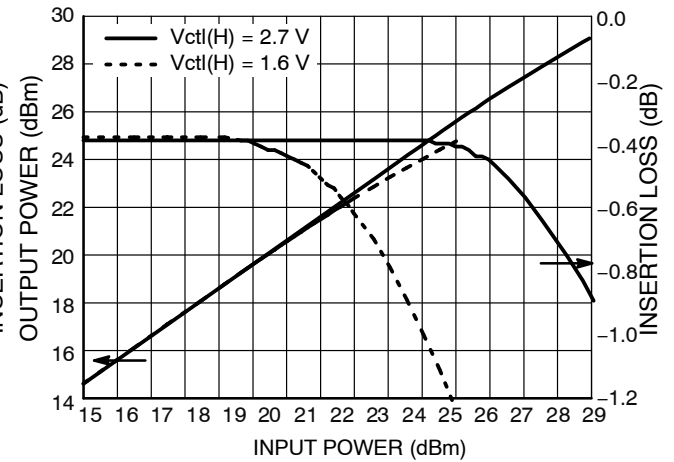


Figure 6. Output power, Insertion Loss vs Input Power
Freq = 2.5 GHz, IN-OUT2 ON

NSG1001MX, NSVG1001MX

ELECTRICAL CHARACTERISTICS

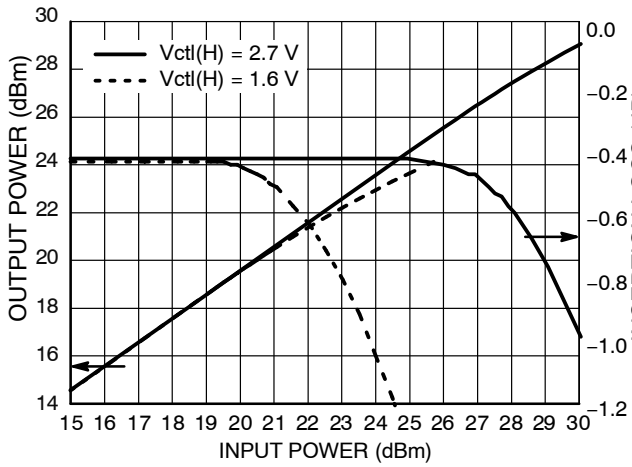


Figure 7. Output power, Insertion Loss vs Input Power
Freq = 6.0 GHz, IN-OUT1 ON

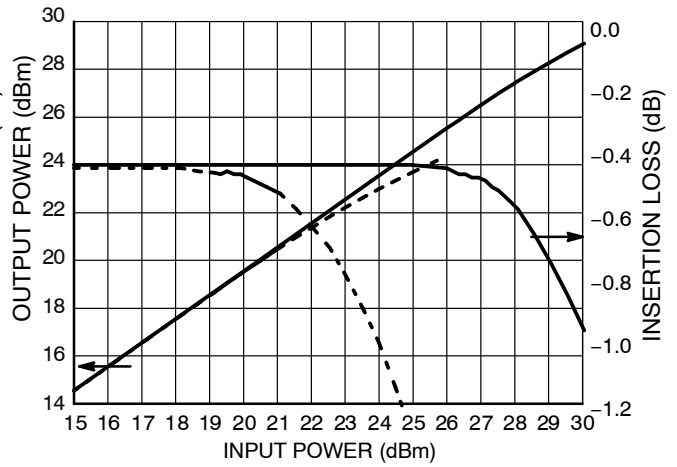
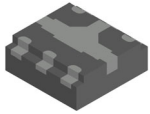


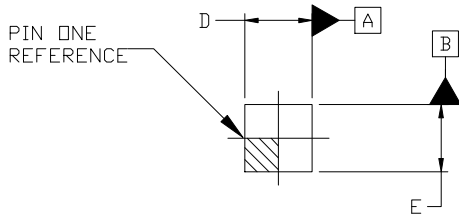
Figure 8. Output power, Insertion Loss vs Input Power
Freq = 6.0 GHz, IN-OUT2 ON

MECHANICAL CASE OUTLINE PACKAGE DIMENSIONS

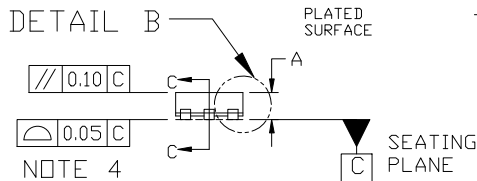


XDFNW6 1.0x1.0, 0.35P CASE 717AE ISSUE B

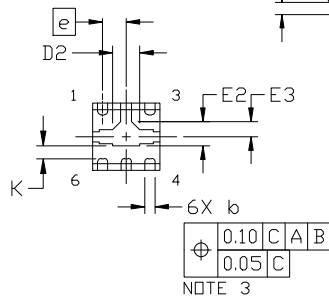
DATE 06 MAY 2022



TOP VIEW



SIDE VIEW



BOTTOM VIEW

GENERIC MARKING DIAGRAM*

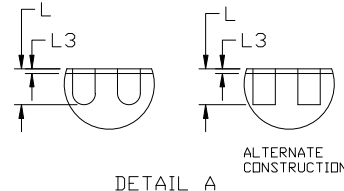


XX = Specific Device Code
M = Date Code

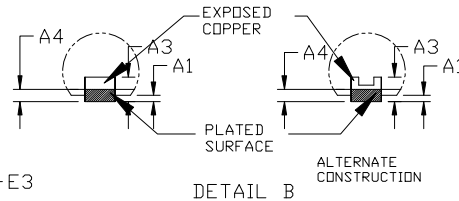
*This information is generic. Please refer to device data sheet for actual part marking. Pb-Free indicator, "G" or microdot "▪", may or may not be present. Some products may not follow the Generic Marking.

NOTES:

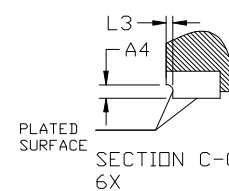
1. DIMENSIONING AND TOLERANCING PER ASME Y14.5M, 2009.
2. CONTROLLING DIMENSION: MILLIMETERS
3. DIMENSION *b* APPLIES TO PLATED TERMINAL AND IS MEASURED BETWEEN 0.15 AND 0.20 MM FROM THE TERMINAL TIP.
4. COPLANARITY APPLIES TO ALL THE TERMINALS.
5. PACKAGE DIMENSIONS EXCLUSIVE OF BURRS AND MOLD FLASH.



DETAIL A

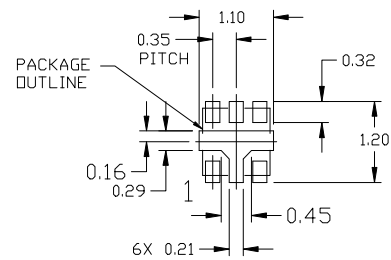


DETAIL B



SECTION C-C
6X

| DIM | MILLIMETERS | | |
|----------|-------------|------|------|
| | MIN. | NOM. | MAX. |
| A | 0.32 | 0.38 | 0.43 |
| A1 | 0.00 | --- | 0.05 |
| A3 | 0.152 REF | | |
| A4 | 0.10 | --- | --- |
| <i>b</i> | 0.10 | 0.16 | 0.22 |
| D | 0.90 | 1.00 | 1.10 |
| D2 | 0.30 | 0.40 | 0.50 |
| E | 0.90 | 1.00 | 1.10 |
| E2 | 0.36 REF | | |
| E3 | 0.23 REF | | |
| <i>e</i> | 0.35 BSC | | |
| K | 0.18 REF | | |
| L | 0.12 | 0.18 | 0.24 |
| L3 | --- | --- | 0.09 |



RECOMMENDED MOUNTING FOOTPRINT*

* For additional information on our Pb-Free strategy and soldering details, please download the DN Semiconductor Soldering and Mounting Techniques Reference Manual, SOLDERM/D.

| | | |
|------------------|-----------------------|--|
| DOCUMENT NUMBER: | 98AON12427H | Electronic versions are uncontrolled except when accessed directly from the Document Repository. Printed versions are uncontrolled except when stamped "CONTROLLED COPY" in red. |
| DESCRIPTION: | XDFNW6 1.0x1.0, 0.35P | PAGE 1 OF 1 |

onsemi and ONSEMI are trademarks of Semiconductor Components Industries, LLC dba onsemi or its subsidiaries in the United States and/or other countries. onsemi reserves the right to make changes without further notice to any products herein. onsemi makes no warranty, representation or guarantee regarding the suitability of its products for any particular purpose, nor does onsemi assume any liability arising out of the application or use of any product or circuit, and specifically disclaims any and all liability, including without limitation special, consequential or incidental damages. onsemi does not convey any license under its patent rights nor the rights of others.

onsemi, **Onsemi**, and other names, marks, and brands are registered and/or common law trademarks of Semiconductor Components Industries, LLC dba "**onsemi**" or its affiliates and/or subsidiaries in the United States and/or other countries. **onsemi** owns the rights to a number of patents, trademarks, copyrights, trade secrets, and other intellectual property. A listing of **onsemi**'s product/patent coverage may be accessed at www.onsemi.com/site/pdf/Patent-Marking.pdf. **onsemi** reserves the right to make changes at any time to any products or information herein, without notice. The information herein is provided "as-is" and **onsemi** makes no warranty, representation or guarantee regarding the accuracy of the information, product features, availability, functionality, or suitability of its products for any particular purpose, nor does **onsemi** assume any liability arising out of the application or use of any product or circuit, and specifically disclaims any and all liability, including without limitation special, consequential or incidental damages. Buyer is responsible for its products and applications using **onsemi** products, including compliance with all laws, regulations and safety requirements or standards, regardless of any support or applications information provided by **onsemi**. "Typical" parameters which may be provided in **onsemi** data sheets and/or specifications can and do vary in different applications and actual performance may vary over time. All operating parameters, including "Typicals" must be validated for each customer application by customer's technical experts. **onsemi** does not convey any license under any of its intellectual property rights nor the rights of others. **onsemi** products are not designed, intended, or authorized for use as a critical component in life support systems or any FDA Class 3 medical devices or medical devices with a same or similar classification in a foreign jurisdiction or any devices intended for implantation in the human body. Should Buyer purchase or use **onsemi** products for any such unintended or unauthorized application, Buyer shall indemnify and hold **onsemi** and its officers, employees, subsidiaries, affiliates, and distributors harmless against all claims, costs, damages, and expenses, and reasonable attorney fees arising out of, directly or indirectly, any claim of personal injury or death associated with such unintended or unauthorized use, even if such claim alleges that **onsemi** was negligent regarding the design or manufacture of the part. **onsemi** is an Equal Opportunity/Affirmative Action Employer. This literature is subject to all applicable copyright laws and is not for resale in any manner.

ADDITIONAL INFORMATION

TECHNICAL PUBLICATIONS:

Technical Library: www.onsemi.com/design/resources/technical-documentation
onsemi Website: www.onsemi.com

ONLINE SUPPORT: www.onsemi.com/support

For additional information, please contact your local Sales Representative at www.onsemi.com/support/sales

