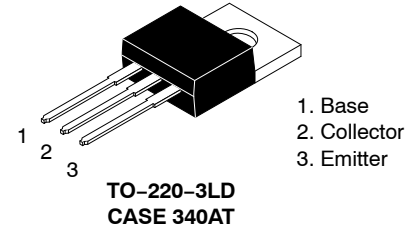


PNP Epitaxial Silicon Transistor

KSA1010

High Speed High Voltage Switching

- Industrial Use
- Complement to KSC2334



ABSOLUTE MAXIMUM RATINGS

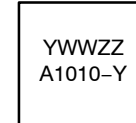
($T_C = 25^\circ\text{C}$ unless otherwise noted.)

Symbol	Parameter	Ratings	Unit
V_{CBO}	Collector-Base Voltage	-100	V
V_{CEO}	Collector-Emitter Voltage	-100	V
V_{EBO}	Emitter-Base Voltage	-7	V
I_C	Collector Current (DC)	-7	A
I_{CP}	Collector Current (Pulse) (Note 1)	-15	A
I_B	Base Current	-3.5	A
P_C	Collector Dissipation ($T_C = 25^\circ\text{C}$)	40	W
	Collector Dissipation ($T_A = 25^\circ\text{C}$)	1.5	W
T_J	Junction Temperature	150	$^\circ\text{C}$
T_{STG}	Storage Temperature	-55 to 150	$^\circ\text{C}$

Stresses exceeding those listed in the Maximum Ratings table may damage the device. If any of these limits are exceeded, device functionality should not be assumed, damage may occur and reliability may be affected.

1. $PW \leq 300 \mu\text{s}$, Duty Cycle $\leq 10\%$.

MARKING DIAGRAM



YWW = Date Code (Year & Week)
 ZZ = Lot Run Traceability Code
 A1010 = Specific Device Code
 Y = h_{FE} Grade

ORDERING INFORMATION

Device	Package	Shipping
KSA1010YTU	TO-220-3LD (Pb-Free)	1000 Units / Tube

ELECTRICAL CHARACTERISTICS ($T_C = 25^\circ\text{C}$ unless otherwise noted.)

Symbol	Parameter	Conditions	Min	Max	Unit
$V_{CEO(sus)}$	Collector-Emitter Sustaining Voltage	$I_C = -5 \text{ A}$, $I_{B1} = -0.5 \text{ A}$, $L = 1 \text{ mH}$	-100	-	V
$V_{CEX(sus)1}$	Collector-Emitter Sustaining Voltage	$I_C = -5 \text{ A}$, $I_{B1} = -I_{B2} = -0.5 \text{ A}$, $V_{BE(off)} = 5 \text{ V}$, $L = 180 \mu\text{H}$, Clamped	-100	-	V
$V_{CEX(sus)2}$	Collector-Emitter Sustaining Voltage	$I_C = -10 \text{ A}$, $I_{B1} = -1 \text{ A}$, $I_{B2} = 0.5 \text{ A}$, $V_{BE(off)} = 5 \text{ V}$, $L = 180 \mu\text{H}$, Clamped	-100	-	V
I_{CBO}	Collector Cut-off Current	$V_{CB} = -100 \text{ V}$, $I_E = 0$	-	-10	μA
I_{CER}	Collector Cut-off Current	$V_{CE} = -100 \text{ V}$, $R_{BE} = 51 \Omega$, $T_C = 125^\circ\text{C}$	-	-1	mA
I_{CEX1}	Collector Cut-off Current	$V_{CE} = -100 \text{ V}$, $V_{BE(off)} = 1.5 \text{ V}$	-	-10	μA
I_{CEX2}	Collector Cut-off Current	$V_{CE} = -100 \text{ V}$, $V_{BE(off)} = 1.5 \text{ V}$, $T_C = 125^\circ\text{C}$	-	-1	mA
I_{EBO}	Emitter Cut-off Current	$V_{EB} = -5 \text{ V}$, $I_C = 0$	-	-10	μA
h_{FE1} h_{FE2} h_{FE3}	DC Current Gain (Note 2)	$V_{CE} = -5 \text{ V}$, $I_C = -0.5 \text{ A}$ $V_{CE} = -5 \text{ V}$, $I_C = -3 \text{ A}$ $V_{CE} = -5 \text{ V}$, $I_C = -5 \text{ A}$	40 40 20	- 200 -	
$V_{CE(sat)}$	Collector-Emitter Saturation Voltage (Note 2)	$I_C = -5 \text{ A}$, $I_B = -0.5 \text{ A}$	-	-0.6	V
$V_{BE(sat)}$	Base-Emitter Saturation Voltage (Note 2)	$I_C = -5 \text{ A}$, $I_B = -0.5 \text{ A}$	-	-1.5	V
t_{ON}	Turn On Time	$V_{CC} = -50 \text{ V}$, $I_C = -5 \text{ A}$, $I_{B1} = -I_{B2} = -0.5 \text{ A}$, $R_L = 10 \Omega$	-	0.5	μs
t_{STG}	Storage Time		-	1.5	μs
t_F	Fall Time		-	0.5	μs

Product parametric performance is indicated in the Electrical Characteristics for the listed test conditions, unless otherwise noted. Product performance may not be indicated by the Electrical Characteristics if operated under different conditions.

2. Pulse Test: $PW \leq 350 \mu\text{s}$, Duty Cycle $\leq 2\%$.

h_{FE} Classification

Classification	R	O	Y
h_{FE2}	40 ~ 80	60 ~ 120	100 ~ 200

TYPICAL CHARACTERISTICS

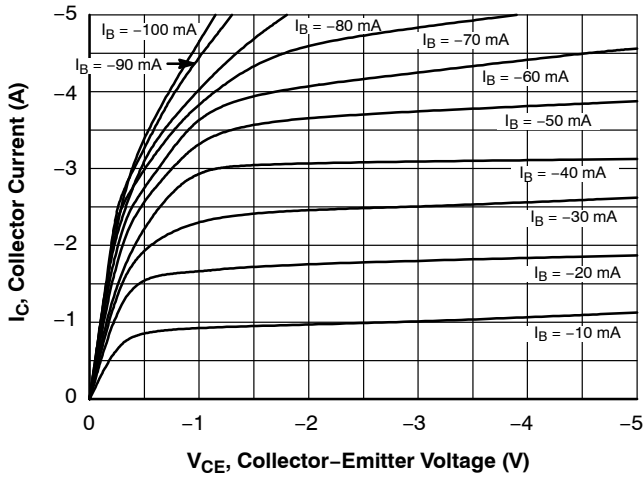


Figure 1. Static Characteristic

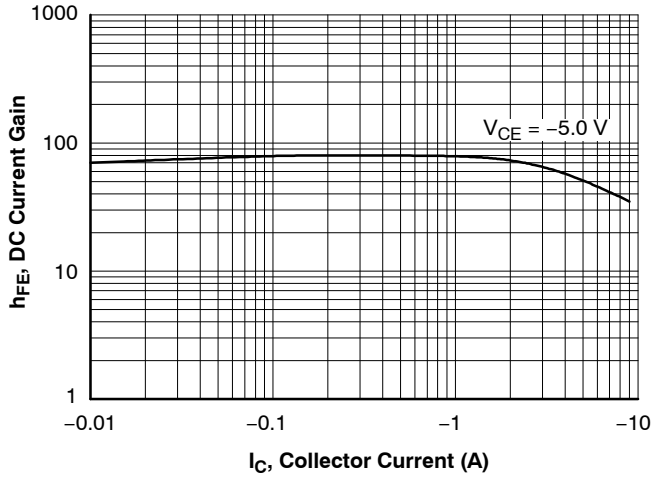


Figure 2. DC Current Gain

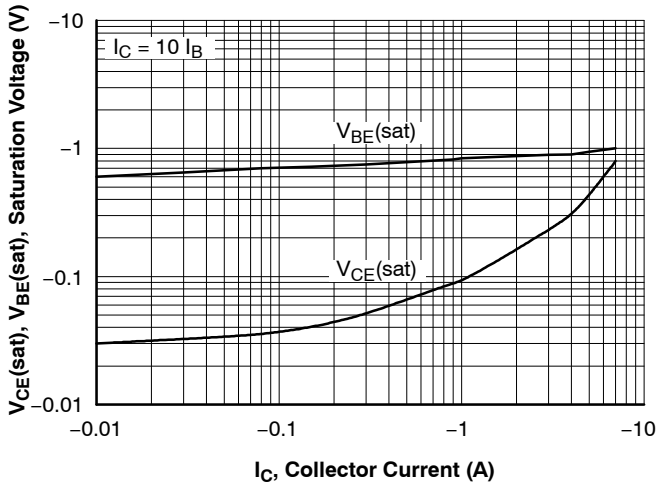


Figure 3. Base-Emitter Saturation Voltage
Collector-Emitter Saturation Voltage

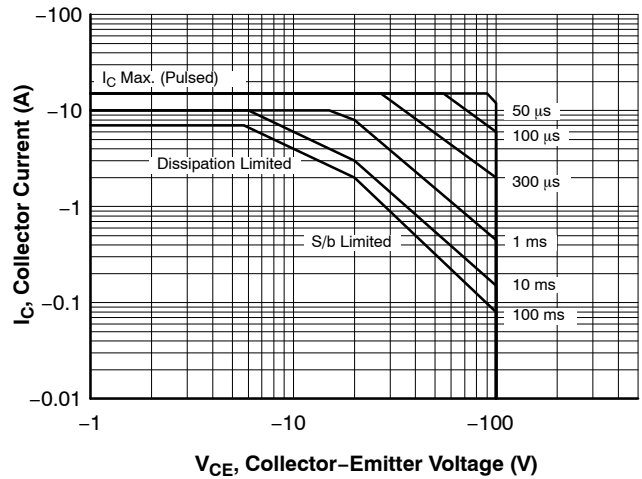


Figure 4. Safe Operating Area

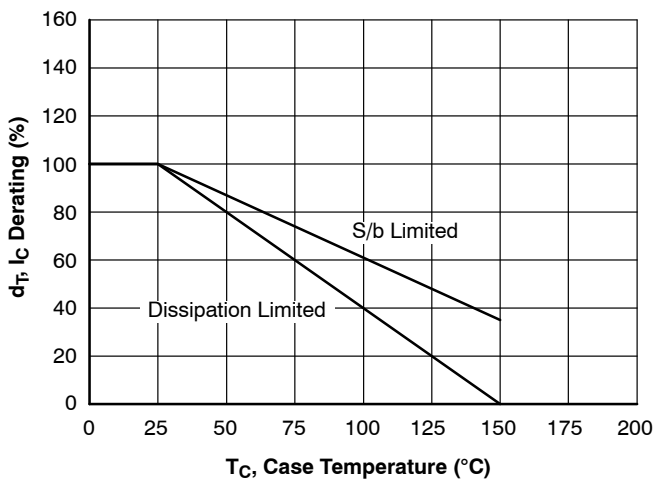


Figure 5. Derating Curve of Safe Operating Areas

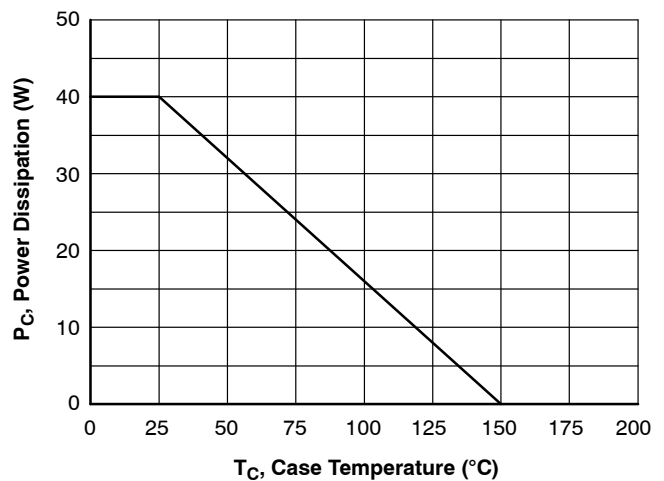
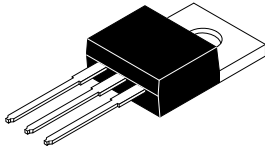


Figure 6. Power Derating

MECHANICAL CASE OUTLINE

PACKAGE DIMENSIONS

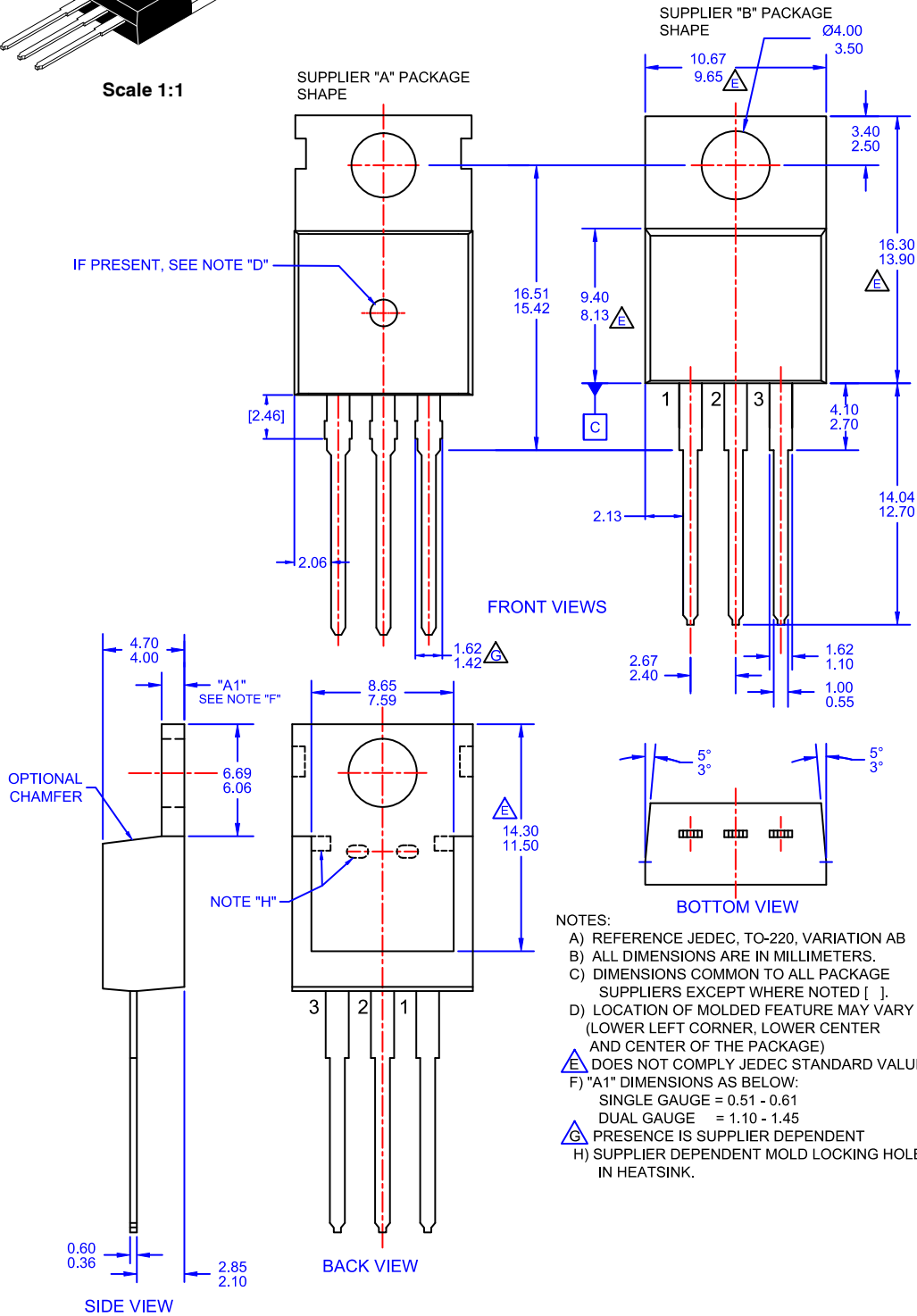
ON Semiconductor®



Scale 1:1

TO-220-3LD CASE 340AT ISSUE A

DATE 03 OCT 2017



- NOTES:
- A) REFERENCE JEDEC, TO-220, VARIATION AB
 - B) ALL DIMENSIONS ARE IN MILLIMETERS.
 - C) DIMENSIONS COMMON TO ALL PACKAGE SUPPLIERS EXCEPT WHERE NOTED [].
 - D) LOCATION OF MOLDED FEATURE MAY VARY (LOWER LEFT CORNER, LOWER CENTER AND CENTER OF THE PACKAGE)
 - E) DOES NOT COMPLY JEDEC STANDARD VALUE.
 - F) "A1" DIMENSIONS AS BELOW:
 SINGLE GAUGE = 0.51 - 0.61
 DUAL GAUGE = 1.10 - 1.45
 - G) PRESENCE IS SUPPLIER DEPENDENT
 - H) SUPPLIER DEPENDENT MOLD LOCKING HOLES IN HEATSINK.

DOCUMENT NUMBER:	98AON13818G	Electronic versions are uncontrolled except when accessed directly from the Document Repository. Printed versions are uncontrolled except when stamped "CONTROLLED COPY" in red.
DESCRIPTION:	TO-220-3LD	PAGE 1 OF 1

ON Semiconductor and are trademarks of Semiconductor Components Industries, LLC dba ON Semiconductor or its subsidiaries in the United States and/or other countries. ON Semiconductor reserves the right to make changes without further notice to any products herein. ON Semiconductor makes no warranty, representation or guarantee regarding the suitability of its products for any particular purpose, nor does ON Semiconductor assume any liability arising out of the application or use of any product or circuit, and specifically disclaims any and all liability, including without limitation special, consequential or incidental damages. ON Semiconductor does not convey any license under its patent rights nor the rights of others.

onsemi, **Onsemi**, and other names, marks, and brands are registered and/or common law trademarks of Semiconductor Components Industries, LLC dba "**onsemi**" or its affiliates and/or subsidiaries in the United States and/or other countries. **onsemi** owns the rights to a number of patents, trademarks, copyrights, trade secrets, and other intellectual property. A listing of **onsemi**'s product/patent coverage may be accessed at www.onsemi.com/site/pdf/Patent-Marking.pdf. **onsemi** reserves the right to make changes at any time to any products or information herein, without notice. The information herein is provided "as-is" and **onsemi** makes no warranty, representation or guarantee regarding the accuracy of the information, product features, availability, functionality, or suitability of its products for any particular purpose, nor does **onsemi** assume any liability arising out of the application or use of any product or circuit, and specifically disclaims any and all liability, including without limitation special, consequential or incidental damages. Buyer is responsible for its products and applications using **onsemi** products, including compliance with all laws, regulations and safety requirements or standards, regardless of any support or applications information provided by **onsemi**. "Typical" parameters which may be provided in **onsemi** data sheets and/or specifications can and do vary in different applications and actual performance may vary over time. All operating parameters, including "Typicals" must be validated for each customer application by customer's technical experts. **onsemi** does not convey any license under any of its intellectual property rights nor the rights of others. **onsemi** products are not designed, intended, or authorized for use as a critical component in life support systems or any FDA Class 3 medical devices or medical devices with a same or similar classification in a foreign jurisdiction or any devices intended for implantation in the human body. Should Buyer purchase or use **onsemi** products for any such unintended or unauthorized application, Buyer shall indemnify and hold **onsemi** and its officers, employees, subsidiaries, affiliates, and distributors harmless against all claims, costs, damages, and expenses, and reasonable attorney fees arising out of, directly or indirectly, any claim of personal injury or death associated with such unintended or unauthorized use, even if such claim alleges that **onsemi** was negligent regarding the design or manufacture of the part. **onsemi** is an Equal Opportunity/Affirmative Action Employer. This literature is subject to all applicable copyright laws and is not for resale in any manner.

ADDITIONAL INFORMATION

TECHNICAL PUBLICATIONS:

Technical Library: www.onsemi.com/design/resources/technical-documentation
onsemi Website: www.onsemi.com

ONLINE SUPPORT: www.onsemi.com/support

For additional information, please contact your local Sales Representative at www.onsemi.com/support/sales