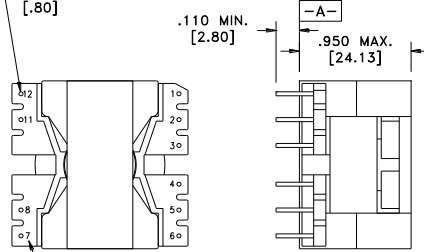


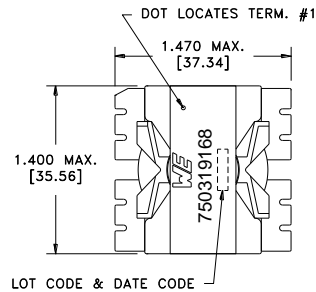
CUSTOMER TERMINAL	RoHS	LEAD(Pb)--FREE
Sn 96%, Ag 4%	Yes	Yes



PART MUST INSERT FULLY TO SURFACE A IN RECOMMENDED GRID
 $\phi .031(10)$
 [.80]



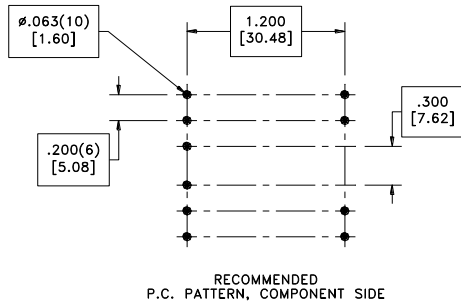
TERM. NO.'s FOR REF. ONLY



LOT CODE & DATE CODE

ELECTRICAL SPECIFICATIONS @ 25° C unless otherwise noted:

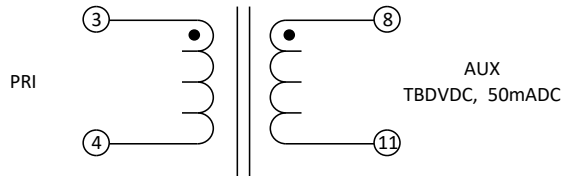
PARAMETER	TEST CONDITIONS	VALUE
D.C. RESISTANCE	3-4 @20°C	0.065 ohms ±10%
D.C. RESISTANCE	8-11 @20°C	0.055 ohms ±10%
INDUCTANCE	3-4 10kHz, 100mV, Ls	150µH ±10%
SATURATION CURRENT	3-4 20% rolloff from initial	13.5A
DIELECTRIC	3-8 1875VAC, 1 second	1500VAC, 1 minute
URNS RATIO	(3-4):(8-11)	10.67:1, ±2%



RECOMMENDED P.C. PATTERN, COMPONENT SIDE

GENERAL SPECIFICATIONS:

OPERATING TEMPERATURE RANGE: -40°C to +125°C including temp rise.



Wire insulation & RoHS status not affected by wire color. Wire insulation color may vary depending on availability.

DFM	SP	Packaging Specifications	 CONVENTION PLACEMENT	Tolerances unless otherwise specified: Angles: ±1° Decimals: ±.005 [.13] Fractions: ±1/64 Footprint: ±.001 [.03]	DRAWING TITLE	PART NO.
DATE	4/23/2020	Method: Tray		This drawing is dual dimensioned. Dimensions in brackets are in millimeters.	INDUCTOR	750319168
ENG	EJK	PKG-1041				
REV.	00					
DATE	5/7/2020	www.we-online.com/midcom				SPECIFICATION SHEET 1 OF 1