

NPN Silicon Transistors

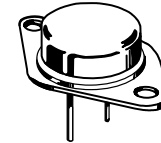
2N5038

Fast switching speeds and high current capacity ideally suit these parts for use in switching regulators, inverters, wide-band amplifiers and power oscillators in industrial and commercial applications.

Features

- High Speed – $t_f = 0.5 \mu s$ (Max)
- High Current – $I_{C(max)} = 30$ Amps
- Low Saturation – $V_{CE(sat)} = 2.5$ V (Max) @ $I_C = 20$ Amps
- Pb-Free Package is Available*

20 AMPERE
NPN SILICON
POWER TRANSISTORS
90 VOLTS – 140 WATTS



TO-204AA (TO-3)
CASE 1-07
STYLE 1

MAXIMUM RATINGS (Note 1)

Symbol	Rating	Value	Unit
V_{CEO}	Collector-Emitter Voltage	90	Vdc
V_{CBO}	Collector-Base Voltage	150	Vdc
V_{CEV}	Collector-Emitter Voltage	150	Vdc
V_{EBO}	Emitter-Base Voltage	7	Vdc
I_C I_{CM}	Collector Current – Peak (Note 2)	20 30	Adc
I_B	Base Current –	5	Adc
P_D	Total Device Dissipation @ $T_C = 25^\circ C$ Derate above $25^\circ C$	140 0.8	W W/ $^\circ C$
T_J, T_{stg}	Operating and Storage Junction Temperature Range	-65 to +200	$^\circ C$

MARKING DIAGRAMS



G = Pb-Free Package
A = Assembly Location
YY = Year
WW = Work Week
MEX = Country of Origin

THERMAL CHARACTERISTICS

Symbol	Characteristics	Max	Unit
$R_{\theta JC}$	Thermal Resistance, Junction-to-Case	1.25	$^\circ C/W$

Stresses exceeding those listed in the Maximum Ratings table may damage the device. If any of these limits are exceeded, device functionality should not be assumed, damage may occur and reliability may be affected.

1. Indicates JEDEC Registered Data.
2. Pulse Test: Pulse Width ≤ 10 ms, Duty Cycle $\leq 50\%$.

ORDERING INFORMATION

See detailed ordering and shipping information in the package dimensions section on page 2 of this data sheet.

NOTE: Some of the devices on this data sheet have been **DISCONTINUED**. Please refer to the table on page 2.

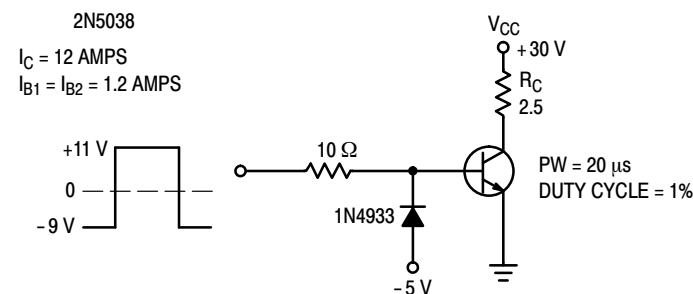


Figure 1. Switching Time Test Circuit

* For additional information on our Pb-Free strategy and soldering details, please download the [onsemi Soldering and Mounting Techniques Reference Manual, SOLDERRM/D](#).

2N5038

ELECTRICAL CHARACTERISTICS ($T_C = 25^\circ\text{C}$ unless otherwise noted) (Note 3)

Symbol	Characteristic	Min	Max	Unit
OFF CHARACTERISTICS				
$V_{CEO(sus)}$	Collector-Emitter Sustaining Voltage (Note 4) ($I_C = 200\text{ mAdc}$, $I_B = 0$)	90	-	Vdc
I_{CEX}	Collector Cutoff Current ($V_{CE} = 140\text{ Vdc}$, $V_{BE(off)} = 1.5\text{ V}$) ($V_{CE} = 100\text{ Vdc}$, $V_{BE(off)} = 1.5\text{ Vdc}$, $T_C = 150^\circ\text{C}$)	- -	50 10	mAdc
I_{EBO}	Emitter Cutoff Current ($V_{EB} = 5\text{ Vdc}$, $I_C = 0$) ($V_{EB} = 7\text{ Vdc}$, $I_C = 0$)	- -	5 50	mAdc

ON CHARACTERISTICS (Note 4)

h_{FE}	DC Current Gain ($I_C = 12\text{ Adc}$, $V_{CE} = 5\text{ Vdc}$)	20	100	-
$V_{CE(sat)}$	Collector-Emitter Saturation Voltage ($I_C = 20\text{ Adc}$, $I_B = 5\text{ Adc}$)	-	2.5	Vdc
$V_{BE(sat)}$	Base-Emitter Saturation Voltage ($I_C = 20\text{ Adc}$, $I_B = 5\text{ Adc}$)	-	3.3	Vdc

DYNAMIC CHARACTERISTICS

$ h_{fe} $	Magnitude of Common-Emitter Small-Signal Short-Circuit Forward Current Transfer Ratio ($I_C = 2\text{ Adc}$, $V_{CE} = 10\text{ Vdc}$, $f = 5\text{ MHz}$)	12	-	-
------------	--	----	---	---

SWITCHING CHARACTERISTICS

RESISTIVE LOAD					
Rise Time	$(V_{CC} = 30\text{ Vdc})$ $(I_C = 12\text{ Adc}$, $I_{B1} = I_{B2} = 1.2\text{ Adc})$	t_r	-	0.5	μs
Storage Time		t_s	-	1.5	μs

3. Indicates JEDEC Registered Data.

4. Pulse Test: Pulse Width $\leq 300\ \mu\text{s}$, Duty Cycle $\leq 2\%$.

ORDERING INFORMATION

Device	Package	Shipping
2N5038G	TO-204 (Pb-Free)	100 Units / Tray

DISCONTINUED (Note 5)

2N5038	TO-204	100 Units / Tray
--------	--------	------------------

5. **DISCONTINUED:** This device is not available. Please contact your onsemi representative for information. The most current information on this device may be available on www.onsemi.com.

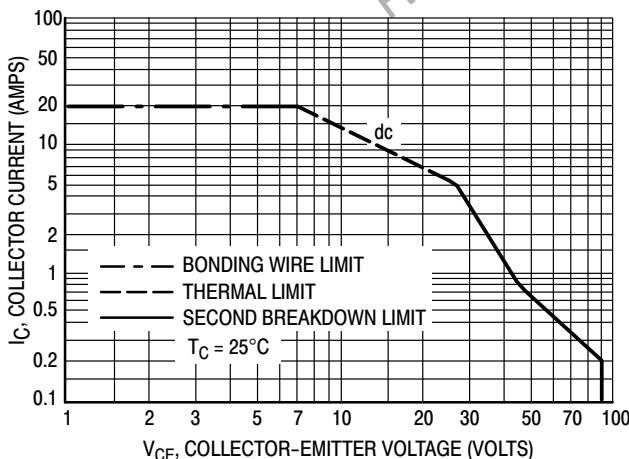


Figure 2. Forward Bias Safe Operating Area

There are two limitations on the power handling ability of a transistor: average junction temperature and second breakdown. Safe operating area curves indicate $I_C - V_{CE}$ limits of the transistor that must be observed for reliable operation; i.e., the transistor must not be subjected to greater dissipation than the curves indicate.

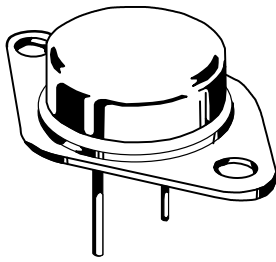
Second breakdown pulse limits are valid for duty cycles to 10%. At high case temperatures, thermal limitations may reduce the power that can be handled to values less than the limitations imposed by second breakdown.

REVISION HISTORY

Revision	Description of Changes	Date
14	Document Discontinued.	1/13/2026

This document has undergone updates prior to the inclusion of this revision history table. The changes tracked here only reflect updates made on the noted approval dates.

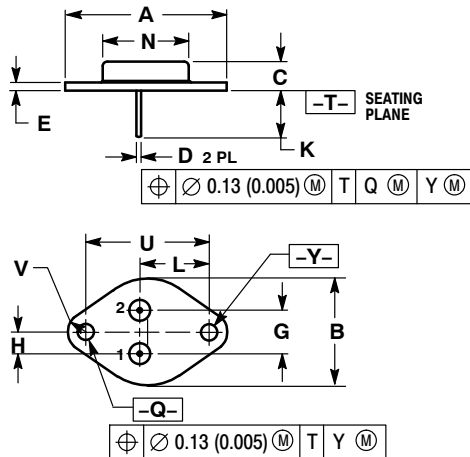
DISCONTINUED
THIS DEVICE IS NOT AVAILABLE
PLEASE CONTACT YOUR onsemi
REPRESENTATIVE FOR INFORMATION



TO-204 (TO-3)
CASE 1-07
ISSUE Z

DATE 10 MAR 2000

SCALE 1:1



- NOTES:
1. DIMENSIONING AND TOLERANCING PER ANSI Y14.5M, 1982.
 2. CONTROLLING DIMENSION: INCH.
 3. ALL RULES AND NOTES ASSOCIATED WITH REFERENCED TO-204AA OUTLINE SHALL APPLY.

DIM	INCHES		MILLIMETERS	
	MIN	MAX	MIN	MAX
A	1.550 REF		39.37 REF	
B	---	1.050	---	26.67
C	0.250	0.335	6.35	8.51
D	0.038	0.043	0.97	1.09
E	0.055	0.070	1.40	1.77
G	0.430 BSC		10.92 BSC	
H	0.215 BSC		5.46 BSC	
K	0.440	0.480	11.18	12.19
L	0.665 BSC		16.89 BSC	
N	---	0.830	---	21.08
Q	0.151	0.165	3.84	4.19
U	1.187 BSC		30.15 BSC	
V	0.131	0.188	3.33	4.77

- | | | | | |
|--|--|---|---|---|
| <p>STYLE 1:
PIN 1. BASE
2. EMITTER
CASE: COLLECTOR</p> | <p>STYLE 2:
PIN 1. BASE
2. COLLECTOR
CASE: EMITTER</p> | <p>STYLE 3:
PIN 1. GATE
2. SOURCE
CASE: DRAIN</p> | <p>STYLE 4:
PIN 1. GROUND
2. INPUT
CASE: OUTPUT</p> | <p>STYLE 5:
PIN 1. CATHODE
2. EXTERNAL TRIP/DELAY
CASE: ANODE</p> |
| <p>STYLE 6:
PIN 1. GATE
2. EMITTER
CASE: COLLECTOR</p> | <p>STYLE 7:
PIN 1. ANODE
2. OPEN
CASE: CATHODE</p> | <p>STYLE 8:
PIN 1. CATHODE #1
2. CATHODE #2
CASE: ANODE</p> | <p>STYLE 9:
PIN 1. ANODE #1
2. ANODE #2
CASE: CATHODE</p> | |

DOCUMENT NUMBER:	98ASB42001B	Electronic versions are uncontrolled except when accessed directly from the Document Repository. Printed versions are uncontrolled except when stamped "CONTROLLED COPY" in red.
DESCRIPTION:	TO-204 (TO-3)	PAGE 1 OF 1

onsemi and ONSEMI are trademarks of Semiconductor Components Industries, LLC dba onsemi or its subsidiaries in the United States and/or other countries. onsemi reserves the right to make changes without further notice to any products herein. onsemi makes no warranty, representation or guarantee regarding the suitability of its products for any particular purpose, nor does onsemi assume any liability arising out of the application or use of any product or circuit, and specifically disclaims any and all liability, including without limitation special, consequential or incidental damages. onsemi does not convey any license under its patent rights nor the rights of others.

onsemi, **Onsemi**, and other names, marks, and brands are registered and/or common law trademarks of Semiconductor Components Industries, LLC dba "**onsemi**" or its affiliates and/or subsidiaries in the United States and/or other countries. **onsemi** owns the rights to a number of patents, trademarks, copyrights, trade secrets, and other intellectual property. A listing of **onsemi**'s product/patent coverage may be accessed at www.onsemi.com/site/pdf/Patent-Marking.pdf. **onsemi** reserves the right to make changes at any time to any products or information herein, without notice. The information herein is provided "as-is" and **onsemi** makes no warranty, representation or guarantee regarding the accuracy of the information, product features, availability, functionality, or suitability of its products for any particular purpose, nor does **onsemi** assume any liability arising out of the application or use of any product or circuit, and specifically disclaims any and all liability, including without limitation special, consequential or incidental damages. Buyer is responsible for its products and applications using **onsemi** products, including compliance with all laws, regulations and safety requirements or standards, regardless of any support or applications information provided by **onsemi**. "Typical" parameters which may be provided in **onsemi** data sheets and/or specifications can and do vary in different applications and actual performance may vary over time. All operating parameters, including "Typicals" must be validated for each customer application by customer's technical experts. **onsemi** does not convey any license under any of its intellectual property rights nor the rights of others. **onsemi** products are not designed, intended, or authorized for use as a critical component in life support systems or any FDA Class 3 medical devices or medical devices with a same or similar classification in a foreign jurisdiction or any devices intended for implantation in the human body. Should Buyer purchase or use **onsemi** products for any such unintended or unauthorized application, Buyer shall indemnify and hold **onsemi** and its officers, employees, subsidiaries, affiliates, and distributors harmless against all claims, costs, damages, and expenses, and reasonable attorney fees arising out of, directly or indirectly, any claim of personal injury or death associated with such unintended or unauthorized use, even if such claim alleges that **onsemi** was negligent regarding the design or manufacture of the part. **onsemi** is an Equal Opportunity/Affirmative Action Employer. This literature is subject to all applicable copyright laws and is not for resale in any manner.

ADDITIONAL INFORMATION

TECHNICAL PUBLICATIONS:

Technical Library: www.onsemi.com/design/resources/technical-documentation
onsemi Website: www.onsemi.com

ONLINE SUPPORT: www.onsemi.com/support

For additional information, please contact your local Sales Representative at www.onsemi.com/support/sales