

Axial-Lead Glass Passivated Standard Recovery Rectifiers

**1N4001, 1N4002, 1N4003,
 1N4004, 1N4005, 1N4006,
 1N4007**

This data sheet provides information on subminiature size, axial lead mounted rectifiers for general-purpose low-power applications.

Features

- Shipped in Plastic Bags, 1000 per bag
- Available Tape and Reeled, 5000 per reel, by adding a “RL” suffix to the part number
- Available in Fan-Fold Packaging, 3000 per box, by adding a “FF” suffix to the part number
- Pb-Free Packages are Available

Mechanical Characteristics

- Case: Epoxy, Molded
- Weight: 0.4 gram (approximately)
- Finish: All External Surfaces Corrosion Resistant and Terminal Leads are Readily Solderable
- Lead and Mounting Surface Temperature for Soldering Purposes: 260°C Max. for 10 Seconds, 1/16 in. from case
- Polarity: Cathode Indicated by Polarity Band

*For additional information on our Pb-Free strategy and soldering details, please download the **onsemi** Soldering and Mounting Techniques Reference Manual, SOLDERRM/D.

LEAD MOUNTED RECTIFIERS 50–1000 VOLTS DIFFUSED JUNCTION



CASE 59–10
 AXIAL LEAD
 PLASTIC

MARKING DIAGRAM



A = Assembly Location
 1N400x = Device Number
 x = 1, 2, 3, 4, 5, 6 or 7
 YY = Year
 WW = Work Week
 ■ = Pb-Free Package
 (Note: Microdot may be in either location)

ORDERING INFORMATION

See detailed ordering and shipping information on page 5 of this data sheet.

1N4001, 1N4002, 1N4003, 1N4004, 1N4005, 1N4006, 1N4007

MAXIMUM RATINGS

| Rating | Symbol | 1N4001 | 1N4002 | 1N4003 | 1N4004 | 1N4005 | 1N4006 | 1N4007 | Unit |
|---|---------------------------------|------------------|--------|--------|--------|--------|--------|--------|------------------|
| †Peak Repetitive Reverse Voltage Working Peak Reverse Voltage DC Blocking Voltage | V_{RRM} V_{RWM} V_R | 50 | 100 | 200 | 400 | 600 | 800 | 1000 | V |
| †Non-Repetitive Peak Reverse Voltage (halfwave, single phase, 60 Hz) | V_{RSM} | 60 | 120 | 240 | 480 | 720 | 1000 | 1200 | V |
| †RMS Reverse Voltage | $V_{R(RMS)}$ | 35 | 70 | 140 | 280 | 420 | 560 | 700 | V |
| †Average Rectified Forward Current (single phase, resistive load, 60 Hz, $T_A = 75^\circ\text{C}$) | I_O | 1.0 | | | | | | | A |
| †Non-Repetitive Peak Surge Current (surge applied at rated load conditions) | I_{FSM} | 30 (for 1 cycle) | | | | | | | A |
| Operating and Storage Junction Temperature Range | T_J T_{stg} | -65 to +150 | | | | | | | $^\circ\text{C}$ |

Stresses exceeding those listed in the Maximum Ratings table may damage the device. If any of these limits are exceeded, device functionality should not be assumed, damage may occur and reliability may be affected.

†Indicates JEDEC Registered Data

THERMAL CHARACTERISTICS

| Rating | Symbol | Max | Unit |
|---|-----------------|--------|---------------------------|
| Maximum Thermal Resistance, Junction-to-Ambient | $R_{\theta JA}$ | Note 1 | $^\circ\text{C}/\text{W}$ |

ELECTRICAL CHARACTERISTICS†

| Rating | Symbol | Typ | Max | Unit |
|--|-------------|-------------|----------|---------------|
| Maximum Instantaneous Forward Voltage Drop, ($I_F = 1.0$ Amp, $T_J = 25^\circ\text{C}$) | V_F | 0.93 | 1.1 | V |
| Maximum Full-Cycle Average Forward Voltage Drop, ($I_O = 1.0$ Amp, $T_L = 75^\circ\text{C}$, 1 inch leads) | $V_{F(AV)}$ | - | 0.8 | V |
| Maximum Reverse Current (rated DC voltage) ($T_J = 25^\circ\text{C}$) ($T_J = 100^\circ\text{C}$) | I_R | 0.05 1.0 | 10 50 | μA |
| Maximum Full-Cycle Average Reverse Current, ($I_O = 1.0$ Amp, $T_L = 75^\circ\text{C}$, 1 inch leads) | $I_{R(AV)}$ | - | 30 | μA |

Product parametric performance is indicated in the Electrical Characteristics for the listed test conditions, unless otherwise noted. Product performance may not be indicated by the Electrical Characteristics if operated under different conditions.

†Indicates JEDEC Registered Data

1N4001, 1N4002, 1N4003, 1N4004, 1N4005, 1N4006, 1N4007

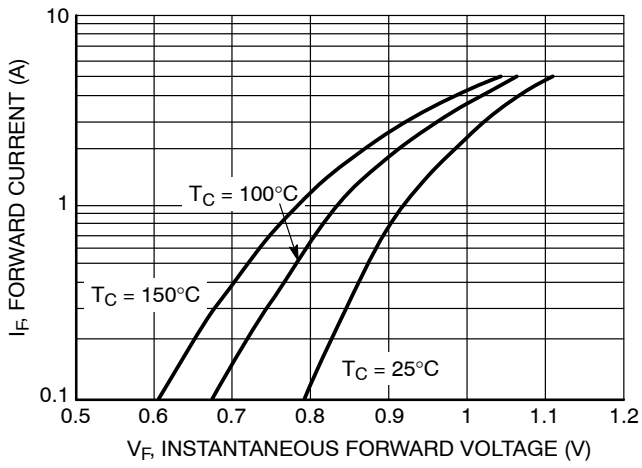


Figure 1. Typical Forward Voltage

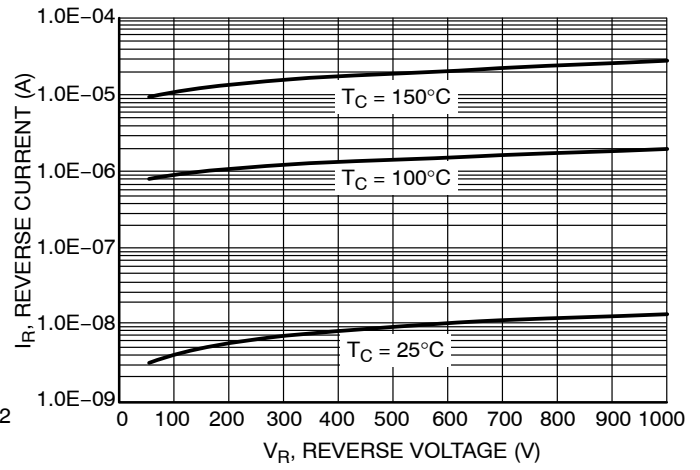


Figure 2. Typical Reverse Current



Figure 3. Typical Capacitance

NOTE 1. – AMBIENT MOUNTING DATA

Data shown for thermal resistance, junction-to-ambient ($R_{\theta JA}$) for the mountings shown is to be used as typical guideline values for preliminary engineering or in case the tie point temperature cannot be measured.

TYPICAL VALUES FOR $R_{\theta JA}$ IN STILL AIR

| Mounting Method | $R_{\theta JA}$ | Lead Length, L | | | Units |
|-----------------|-----------------|----------------|-----|-----|-------|
| | | 1/8 | 1/4 | 1/2 | |
| 1 | | 52 | 65 | 72 | °C/W |
| 2 | | 67 | 80 | 87 | °C/W |
| 3 | | 50 | | | °C/W |

MOUNTING METHOD 1

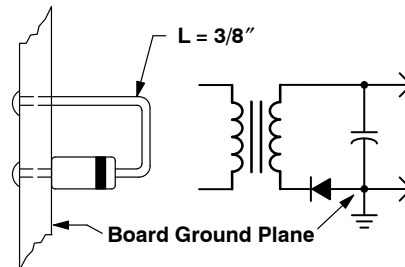


MOUNTING METHOD 2



Vector Pin Mounting

MOUNTING METHOD 3



P.C. Board with
1-1/2" X 1-1/2" Copper Surface

1N4001, 1N4002, 1N4003, 1N4004, 1N4005, 1N4006, 1N4007

ORDERING INFORMATION

| Device | Package | Shipping [†] |
|-----------|--------------------------|-----------------------|
| 1N4001 | Axial Lead* | 1000 Units/Bag |
| 1N4001G | Axial Lead* (Pb-Free) | 1000 Units/Bag |
| 1N4001RL | Axial Lead* | 5000/Tape & Reel |
| 1N4001RLG | Axial Lead* (Pb-Free) | 5000/Tape & Reel |
| 1N4002 | Axial Lead* | 1000 Units/Bag |
| 1N4002G | Axial Lead* (Pb-Free) | 1000 Units/Bag |
| 1N4002RL | Axial Lead* | 5000/Tape & Reel |
| 1N4002RLG | Axial Lead* (Pb-Free) | 5000/Tape & Reel |
| 1N4003 | Axial Lead* | 1000 Units/Bag |
| 1N4003G | Axial Lead* (Pb-Free) | 1000 Units/Bag |
| 1N4003RL | Axial Lead* | 5000/Tape & Reel |
| 1N4003RLG | Axial Lead* (Pb-Free) | 5000/Tape & Reel |
| 1N4004 | Axial Lead* | 1000 Units/Bag |
| 1N4004G | Axial Lead* (Pb-Free) | 1000 Units/Bag |
| 1N4004RL | Axial Lead* | 5000/Tape & Reel |
| 1N4004RLG | Axial Lead* (Pb-Free) | 5000/Tape & Reel |
| 1N4005 | Axial Lead* | 1000 Units/Bag |
| 1N4005G | Axial Lead* (Pb-Free) | 1000 Units/Bag |
| 1N4005RL | Axial Lead* | 5000/Tape & Reel |
| 1N4005RLG | Axial Lead* (Pb-Free) | 5000/Tape & Reel |
| 1N4006 | Axial Lead* | 1000 Units/Bag |
| 1N4006G | Axial Lead* (Pb-Free) | 1000 Units/Bag |
| 1N4006FFG | Axial Lead* (Pb-Free) | 3000 Units/Box |
| 1N4006RL | Axial Lead* | 5000/Tape & Reel |
| 1N4006RLG | Axial Lead* (Pb-Free) | 5000/Tape & Reel |
| 1N4007 | Axial Lead* | 1000 Units/Bag |
| 1N4007G | Axial Lead* (Pb-Free) | 1000 Units/Bag |
| 1N4007FFG | Axial Lead* (Pb-Free) | 3000 Units/Box |
| 1N4007RL | Axial Lead* | 5000/Tape & Reel |
| 1N4007RLG | Axial Lead* (Pb-Free) | 5000/Tape & Reel |

[†]For information on tape and reel specifications, including part orientation and tape sizes, please refer to our Tape and Reel Packaging Specifications Brochure, BRD8011/D.

*This package is inherently Pb-Free.

MECHANICAL CASE OUTLINE

PACKAGE DIMENSIONS

ON Semiconductor®



AXIAL LEAD CASE 59-10 ISSUE U

DATE 15 FEB 2005



SCALE 1:1

POLARITY INDICATOR
OPTIONAL AS NEEDED
(SEE STYLES)

STYLE 1:
PIN 1. CATHODE (POLARITY BAND)
2. ANODE

STYLE 2:
NO POLARITY

NOTES:

1. DIMENSIONING AND TOLERANCING PER ANSI Y14.5M, 1982.
2. CONTROLLING DIMENSION: INCH.
3. ALL RULES AND NOTES ASSOCIATED WITH JEDEC DO-41 OUTLINE SHALL APPLY
4. POLARITY DENOTED BY CATHODE BAND.
5. LEAD DIAMETER NOT CONTROLLED WITHIN F DIMENSION.

| DIM | INCHES | | MILLIMETERS | |
|-----|--------|-------|-------------|------|
| | MIN | MAX | MIN | MAX |
| A | 0.161 | 0.205 | 4.10 | 5.20 |
| B | 0.079 | 0.106 | 2.00 | 2.70 |
| D | 0.028 | 0.034 | 0.71 | 0.86 |
| F | --- | 0.050 | --- | 1.27 |
| K | 1.000 | --- | 25.40 | --- |

GENERIC MARKING DIAGRAM*



- xxx = Specific Device Code
- A = Assembly Location
- YY = Year
- WW = Work Week

*This information is generic. Please refer to device data sheet for actual part marking. Pb-Free indicator, "G" or microdot "▪", may or may not be present.

| | | |
|-------------------------|--------------------|--|
| DOCUMENT NUMBER: | 98ASB42045B | Electronic versions are uncontrolled except when accessed directly from the Document Repository. Printed versions are uncontrolled except when stamped "CONTROLLED COPY" in red. |
| DESCRIPTION: | AXIAL LEAD | PAGE 1 OF 1 |

ON Semiconductor and are trademarks of Semiconductor Components Industries, LLC dba ON Semiconductor or its subsidiaries in the United States and/or other countries. ON Semiconductor reserves the right to make changes without further notice to any products herein. ON Semiconductor makes no warranty, representation or guarantee regarding the suitability of its products for any particular purpose, nor does ON Semiconductor assume any liability arising out of the application or use of any product or circuit, and specifically disclaims any and all liability, including without limitation special, consequential or incidental damages. ON Semiconductor does not convey any license under its patent rights nor the rights of others.

onsemi, **Onsemi**, and other names, marks, and brands are registered and/or common law trademarks of Semiconductor Components Industries, LLC dba "**onsemi**" or its affiliates and/or subsidiaries in the United States and/or other countries. **onsemi** owns the rights to a number of patents, trademarks, copyrights, trade secrets, and other intellectual property. A listing of **onsemi**'s product/patent coverage may be accessed at www.onsemi.com/site/pdf/Patent-Marking.pdf. **onsemi** reserves the right to make changes at any time to any products or information herein, without notice. The information herein is provided "as-is" and **onsemi** makes no warranty, representation or guarantee regarding the accuracy of the information, product features, availability, functionality, or suitability of its products for any particular purpose, nor does **onsemi** assume any liability arising out of the application or use of any product or circuit, and specifically disclaims any and all liability, including without limitation special, consequential or incidental damages. Buyer is responsible for its products and applications using **onsemi** products, including compliance with all laws, regulations and safety requirements or standards, regardless of any support or applications information provided by **onsemi**. "Typical" parameters which may be provided in **onsemi** data sheets and/or specifications can and do vary in different applications and actual performance may vary over time. All operating parameters, including "Typicals" must be validated for each customer application by customer's technical experts. **onsemi** does not convey any license under any of its intellectual property rights nor the rights of others. **onsemi** products are not designed, intended, or authorized for use as a critical component in life support systems or any FDA Class 3 medical devices or medical devices with a same or similar classification in a foreign jurisdiction or any devices intended for implantation in the human body. Should Buyer purchase or use **onsemi** products for any such unintended or unauthorized application, Buyer shall indemnify and hold **onsemi** and its officers, employees, subsidiaries, affiliates, and distributors harmless against all claims, costs, damages, and expenses, and reasonable attorney fees arising out of, directly or indirectly, any claim of personal injury or death associated with such unintended or unauthorized use, even if such claim alleges that **onsemi** was negligent regarding the design or manufacture of the part. **onsemi** is an Equal Opportunity/Affirmative Action Employer. This literature is subject to all applicable copyright laws and is not for resale in any manner.

ADDITIONAL INFORMATION

TECHNICAL PUBLICATIONS:

Technical Library: www.onsemi.com/design/resources/technical-documentation
onsemi Website: www.onsemi.com

ONLINE SUPPORT: www.onsemi.com/support

For additional information, please contact your local Sales Representative at www.onsemi.com/support/sales