

Improvements in On-board Charger Performance Using the Latest SiC Cascode JFET Technology

AND90326/D

Abstract

Silicon Carbide FETs have already established themselves in on-board charger (OBC) circuits, especially for cases when battery operating voltages exceed 500 V. The low power losses of these devices allow both through-hole and surface mount packages to be employed in this application. We will examine the relative thermal performance of these package options, and demonstrate the viability of the TO247-4L and TO-263-7 options in 6.6 kW and 22 kW chargers.

Introduction

Silicon Carbide FETs are widely used in on-board chargers (OBC) and DC-DC converters in battery electric vehicles (EVs) [1]. Their use in traction inverters is also rapidly growing. They become the device of choice when the system bus voltages exceed 500 V (e.g., 800 V), because they switch much faster than IGBTs. They are also an excellent choice when hard switching is required in the PFC circuit of lower bus voltage systems, since their diode recovery performance is much better than that of silicon superjunction FETs, and therefore allow for higher frequency switching and lower losses. Finally, the growing trend of making these chargers bidirectional in energy flow, to allow vehicle to grid power transfer, is enabled by the same properties of these wide bandgap devices.

The on-board charger performs a conversion of the input 1 or 3 phase AC into a DC rail, followed by a DC-DC conversion to charge the car battery. In charging mode, the front-end acts as a rectifier and uses a totem-pole PFC, or at higher power an active front-end. These circuits can be operated to reverse the power flow, i.e., as inverters. The DC-DC topology selected for charging can be the LLC or CLLC type, the latter being well suited to bidirectional power transfer. The DC rail may also support another LLC converter at lower power to supply the 12 V electronics in the EV. If bidirectional energy flow is not needed, the Vienna rectifier is a frequent choice for the PFC rectifier.

SiC Device Technology and Package Options

Figure 1 shows the state of the art in commercially available unipolar power semiconductors [2]. The continuous progress in device technology in the last decade has resulted in the Gen 4 SiC JFET and SiC FET (cascode), shown by the blue symbols in that figure. A low R_{dsA} at a given rating allows lower resistance in the same package. It also allows a lower die size and capacitance for a given on-resistance, enabling lower switching losses as well.

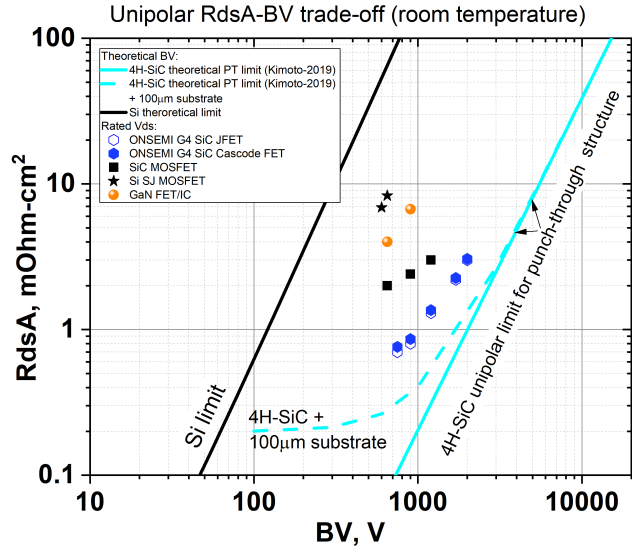


Figure 1. R_{dsA} vs. Voltage Rating of State-of-the-art Silicon and Wide Bandgap Switch Technologies in 2021

Figure 2 shows the package options discussed in this paper. The TO247-4L is a widely available variant of the TO247 package. The TO-263-7 is a surface mount package popular with silicon carbide devices. The through-hole TO247 can dissipate more power, given the large, exposed copper tab. The TO-263-7 die pad is relatively small, given the need to maintain a high creepage distance. Table 1 shows a comparison of relevant parameters, including typical package inductance, heat pad size (area of copper connected to the heatsink), creepage and clearance.

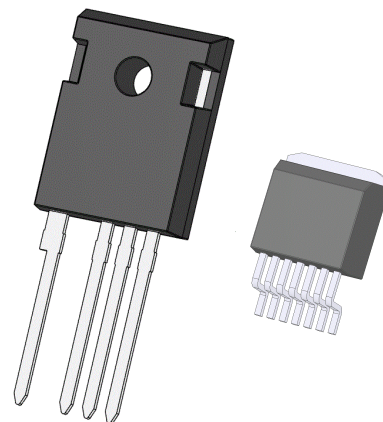
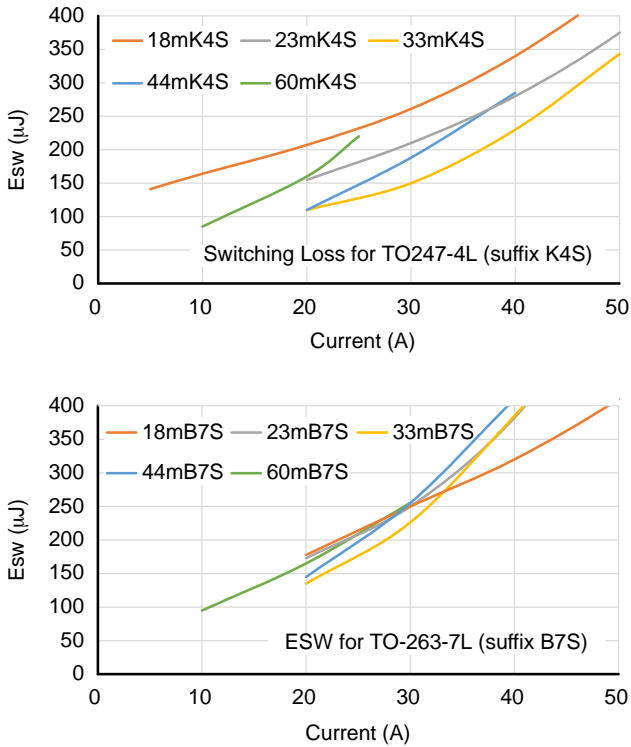


Figure 2. The TO247-4L (Left) and TO-263-7 (Right) are Popular Packages for Through-hole and Surface Mount Options in On-board Chargers

The use of SMT devices can simplify and increase manufacturing automation. Therefore, the option of using the TO-263-7 on an insulated metal substrate (IMS) as an alternative to the TO247-4L in the liquid cooled environment of an EV is worthy of analysis.

Since the analysis of power losses and peak temperature rise require device conduction loss data, switching loss data and thermal resistance data, we will examine that first. Then the FET-Jet online calculator is used to extract the operating worst case losses and temperature rise to check the viability of a selected device and package combination.

The switching data as a function of current has been entered into the calculator based on datasheet curves (see Figures 3a and 3b), along with the temperature dependent on-resistance for all the devices considered. The typical and worst-case thermal resistance (R_{thJC}) is also available within the calculator. Next, we look at simulations to guide reasonable estimates of R_{thCA} to complete the dataset needed for this analysis.



**Figure 3. a. (Top) is the Switching Loss vs. Current at 400 V Bus for TO247-4L 750 V G4 SiC FETs
b. (Bottom) is the Same Data for the Devices in TO-263-7**

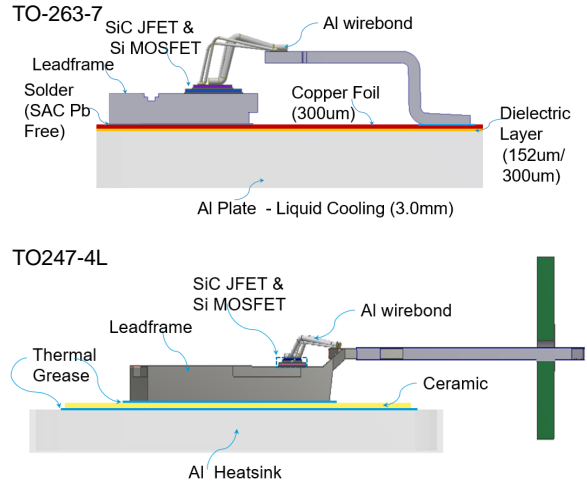


Figure 4. Visualizing the Thermal Path for the TO247-4L and TO-263-7 from the Junction to the Coolant Fluid

Table 1. COMPARISON OF THE TWO PACKAGES SHOWN IN FIGURE 2 (THE SMT DEVICE CLEARLY HAS LOWER INDUCTANCE, BUT ALSO A SMALLER AREA OF HEAT REMOVAL)

Package	Die Pad (mm ²)	Inductance (nH)	Creepage (mm)	Clearance (mm)
TO-263-7	43	3 to 6	6.7	6.1
TO247-4L	176	10 to 15	3.9	3.9

Simulated Comparison of Typical Thermal Environments

Figure 4 shows a typical usage view of the totem-pole PFC using the TO247-4L and that using the TO-263-7 on IMS, showing the heat flow path from the device junction to the fluid used to cool the power electronics. Table 2a and 2b summarize the junction-to-case and case-to-fluid thermal resistance of each device for a range of thermal interface (TIM) isolation options.

Table 2a. THERMAL RESISTANCE PERFORMANCE FOR TO247 BASED DEVICES MOUNTED TO COLDPLATES WITH CERAMIC ISOLATORS

Device	Ceramic Isolator Material	RthJC	RthJ-to-Fluid
UJ4SC075018K4S	AL2O3	0.433 °C/W	0.813 °C/W
	Si3N4	0.430 °C/W	0.750 °C/W
	aln	0.426 °C/W	0.652 °C/W
UJ4C075044K4S	AL2O3	0.650 °C/W	1.059 °C/W
	Si3N4	0.641 °C/W	0.994 °C/W
	ALN	0.639 °C/W	0.986 °C/W

Table 2b. THERMAL RESISTANCE PERFORMANCE FOR TO-263-7 DEVICES BUILT ON IMS, WHERE THE BOTTOM 3 mm AL IS LIQUID COOLED

Device	IMS Dielectric Thk Thermal Cond	RthJC @ 75 °C	RthJ-to-IMS @ 75 °C
UJ4C075044B7S	150 μm, 3 W/mk	0.908 °C/W	1.766 °C/W
UJ4C075044B7S	300 μm, 5 W/mk	0.906 °C/W	2.004 °C/W
UJ4SC075018B7S	150 μm, 3 W/mk	0.438 °C/W	1.299 °C/W
UJ4SC075018B7S	300 μm, 5 W/mk	0.387 °C/W	1.348 °C/W

Based on these results, we can use 0.6 °C/W for TO247 and 1.2 °C/W for TO-263-7 as a median for the thermal resistance from the case to the fluid – added to the junction case thermal resistance. Despite the small chip size of the SiC FETs, low R_{thJC} within the package is achieved via silver sintered die attach.

Case 1: 6.6 kW (AC-DC) Totem Pole PFC for a 400 V Bus System

Figure 5 shows the basic circuit for the totem pole PFC topology. Table 3 shows a compilation of power loss and temperature rises for the 6.6 kW using a range of Gen 4 devices for this application at full load. Other circuit conditions are 230 V rms input, 400 V DC rail, 75 kHz CCM mode switching, 20% inductor ripple, heatsink/fluid temperature 80 °C, using a fixed 11 mΩ, 750 V device on the slow leg in the same package type, and varying the devices for the two interleaved fast legs of the totem pole PFC [3]. We can see a range of options for the fast leg, from 18 mΩ to 60 mΩ with the lowest R_{ds(on)} device offering the highest

performance. The table shows the worst-case power loss per fast leg FET, expected junction temperature, and the semiconductor efficiency, which is a measure of the efficiency loss from just the power semiconductors. Even with the higher case-to-fluid thermal resistance of 1.2 °C/W, the surface mount options shown in the table below are all reasonable choices. The final part decision can be based on overall thermal, efficiency, and cost constraints in the design, with many device options now offered by **onsemi**.

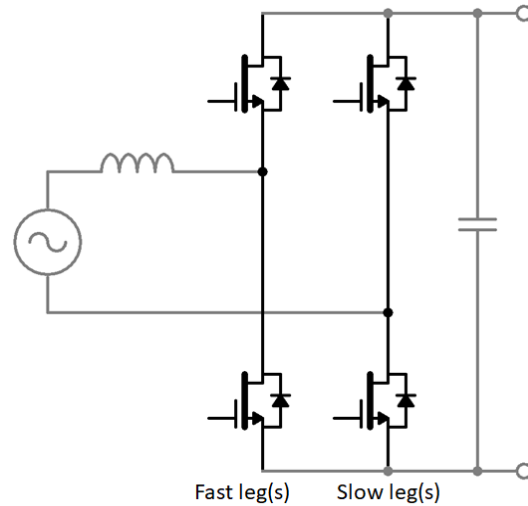


Figure 5. Totem-pole PFC Topology Used in this Analysis. We Assume Two Interleaved Fast Legs with One Switch per Position and Single Low R_{ds} Device in the Slow Leg.

Table 3. CALCULATED LOSSES IN THE FAST-SWITCHING FET, PEAK JUNCTION TEMPERATURE AND SEMICONDUCTOR LOSS LIMITED EFFICIENCY FOR VARIOUS G4 SiC FET OPTIONS 6.6 kW TPPFC OPERATING AT 75 kHz

Device Fast Legs	Device Rating	Package	Loss/FET (W)	T _j pk (°C)	Semicon Efficiency
UJ4C075018K4S	18 m, 750 V	TO247-4L	8.3	88	99.3%
UJ4C075023K4S	23 m, 750 V	TO247-4L	8.6	89	99.3%
UJ4C075033K4S	33 m, 750 V	TO247-4L	8.9	91	99.3%
UJ4C075044K4S	44 m, 750 V	TO247-4L	10.3	94	99.2%
UJ4C075060K4S	60 m, 750 V	TO247-4L	13.5	101	99.0%
UJ4SC075018B7S	18 m, 750 V	TO-263-7	6.8	91	99.4%
UJ4SC075023B7S	23 m, 750 V	TO-263-7	8.6	97	99.3%
UJ4SC075033B7S	33 m, 750 V	TO-263-7	9.9	101	99.2%
UJ4SC075044B7S	44 m, 750 V	TO-263-7	10.5	104	99.2%
UJ4SC075060B7S	60 m, 750 V	TO-263-7	13.7	109	99.0%

Case 2: 6.6 kW CLLC DC-DC for a 400 V Bus System

We can now consider the same series of devices for what they deliver in the CLLC stage of the on-board charger. In general, losses are lower since the devices are not hard switching. Here we assume a full-bridge CLLC implementation, as shown in Figure 6, and examine power losses for the different options at 6.6 kW, 400 V bus, switching at 300 kHz, with the coolant fluid temperature at 80 °C, and the same assumption of 0.6 °C/W for TO247-4L and 1.2 °C/W for TO-263-7 IMS as the additional case-to-fluid thermal impedance. Losses computed for the primary side FETs are listed in Table 4.

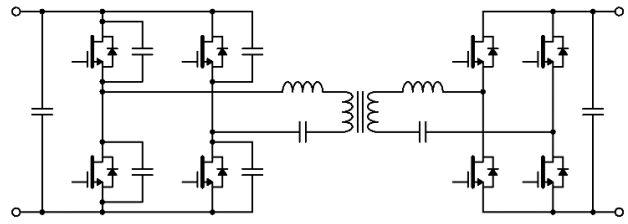


Figure 6. CLLC Topology Used for the Estimates in Table 5. The Primary Side FETs are Considered. The Same Devices Can Often be Used on the Secondary Side.

Table 4. CALCULATED LOSSES IN THE PRIMARY SIDE FETs, PEAK JUNCTION TEMPERATURE AND SEMICONDUCTOR LOSS LIMITED EFFICIENCY FOR VARIOUS G4 SiC FET OPTIONS. 6.6 kW FULL-BRIDGE CLLC OPERATING AT 300 kHz.

Device	Device Rating	Package	Loss/FET (W)	T _j pk (°C)	Semicon Efficiency
UJ4C075018K4S	18 m, 750 V	TO247-4L	4.1	84	99.8%
UJ4C075023K4S	23 m, 750 V	TO247-4L	5.2	86	99.7%
UJ4C075033K4S	33 m, 750 V	TO247-4L	7.9	90	99.5%
UJ4C075044K4S	44 m, 750 V	TO247-4L	10.7	94	99.4%
UJ4C075060K4S	60 m, 750 V	TO247-4L	15.3	104	99.1%
UJ4SC075018B7S	18 m, 750 V	TO-263-7	4.2	87	99.8%
UJ4SC075023B7S	23 m, 750 V	TO-263-7	5.3	90	99.7%
UJ4SC075033B7S	33 m, 750 V	TO-263-7	8.2	97	99.5%
UJ4SC075044B7S	40 m, 750 V	TO-263-7	11.4	106	99.3%
UJ4SC075060B7S	60 m, 750 V	TO-263-7	16.4	115	99.0%

In this case, switching losses are much lower despite the higher frequency, which is the benefit of nearly lossless switching in LLC circuits. In addition, there are many viable options for designers to choose from, both for through hole and surface mount, providing flexibility to optimize performance, thermal management, board space and cost. It is also useful that SiC FETs can be driven with 0 to 10 V drives within minimal impact on performance, which helps limit driver losses.

Case 3: 22 kW Vienna Rectifier

A final useful example is using the 750 V platform in a 22 kW Vienna rectifier shown in Figure 7. For this 3-phase circuit, we perform the calculations assuming the use of 750 V FETs and 50 A, 1200 V UJ3D1250K2 diodes. We assume 230 V rms AC input, 3-phase, an 800 V bus, 40 kHz switching and the same thermal case to ambient conditions for the through-hole and SMT options as in the previous

examples. For 22 kW input, RMS phase currents are about 31.9 A.

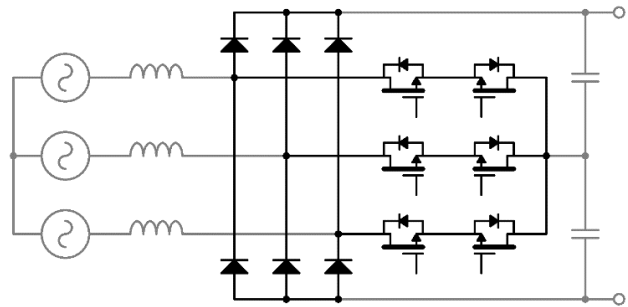


Figure 7. Vienna Rectifier Using All SiC Devices. The Diodes are 1200 V SiC Diodes, While the FETs are Gen 4 750 V SiC FETs.

Table 5. VIENNA RECTIFIER USING ALL SiC DEVICES. THE DIODES ARE 1200 V SiC DIODES, WHILE THE FETS ARE GEN 4 750 V SiC FETS.

Device	Device Rating	Package	Loss/FET (W)	Tj pk (°C)	Semicon Efficiency
UJ4C075018K4S	18 m, 750 V	TO247-4L	14.3	94	99.2%
UJ4C075023K4S	23 m, 750 V	TO247-4L	14	95	99.2%
UJ4C075033K4S	33 m, 750 V	TO247-4L	19.5	104	99.1%
UJ4C075044K4S	44 m, 750 V	TO247-4L	26.4	115	98.9%
UJ4SC075018B7S	18 m, 750 V	TO-263-7	10.7	97	99.3%
UJ4SC075023B7S	23 m, 750 V	TO-263-7	15.5	110	99.2%
UJ4SC075033B7S	33 m, 750 V	TO-263-7	23.2	129	99.0%
UJ4SC075044B7S	44 m, 750 V	TO-263-7	32.7	155	98.7%

In this case, the ability to dissipate more power in the TO247-4L package plays a larger role, and higher resistance devices can be used with good thermal margin. On the other hand, losses are so low in the 18 mΩ to 33 mΩ devices, that they offer a viable surface mount option even at this power level.

Conclusion

The performance improvements of Gen 4 SiC FETs and the availability of a wide range of R_{ds(on)} classes in both through-hole and surface mount packages allows designers to keep improving on-board charger designs in efficiency, size, and waste heat, while keeping costs low. Furthermore,

using simpler 0 to 10/12/15 V gate drive helps manage cost and complexity.

References

- [1] J. Yuan et. al, “[A review of bidirectional on-board chargers for electric vehicles](#)”, IEEE Access, 2021, Vol. 9
- [2] A. Bhalla, “[750 V Gen 4 SiC FETs Enable Higher Efficiency Power Designs](#)”, Bodo’s Power Systems, Jan 2021, pp. 18–22
- [3] “[How to Achieve 99.3% Efficiency in 3.6 kW Totem-pole PFC Using 750 V Gen 4 SiC Cascode JFETs](#)”, onsemi application note AN90324/D

onsemi, Onsemi, and other names, marks, and brands are registered and/or common law trademarks of Semiconductor Components Industries, LLC dba “onsemi” or its affiliates and/or subsidiaries in the United States and/or other countries. onsemi owns the rights to a number of patents, trademarks, copyrights, trade secrets, and other intellectual property. A listing of onsemi’s product/patent coverage may be accessed at www.onsemi.com/site/pdf/Patent-Marking.pdf. onsemi reserves the right to make changes at any time to any products or information herein, without notice. The information herein is provided “as-is” and onsemi makes no warranty, representation or guarantee regarding the accuracy of the information, product features, availability, functionality, or suitability of its products for any particular purpose, nor does onsemi assume any liability arising out of the application or use of any product or circuit, and specifically disclaims any and all liability, including without limitation special, consequential or incidental damages. Buyer is responsible for its products and applications using onsemi products, including compliance with all laws, regulations and safety requirements or standards, regardless of any support or applications information provided by onsemi. “Typical” parameters which may be provided in onsemi data sheets and/or specifications can and do vary in different applications and actual performance may vary over time. All operating parameters, including “Typicals” must be validated for each customer application by customer’s technical experts. onsemi does not convey any license under any of its intellectual property rights nor the rights of others. onsemi products are not designed, intended, or authorized for use as a critical component in life support systems or any FDA Class 3 medical devices or medical devices with a same or similar classification in a foreign jurisdiction or any devices intended for implantation in the human body. Should Buyer purchase or use onsemi products for any such unintended or unauthorized application, Buyer shall indemnify and hold onsemi and its officers, employees, subsidiaries, affiliates, and distributors harmless against all claims, costs, damages, and expenses, and reasonable attorney fees arising out of, directly or indirectly, any claim of personal injury or death associated with such unintended or unauthorized use, even if such claim alleges that onsemi was negligent regarding the design or manufacture of the part. onsemi is an Equal Opportunity/Affirmative Action Employer. This literature is subject to all applicable copyright laws and is not for resale in any manner.

ADDITIONAL INFORMATION

TECHNICAL PUBLICATIONS:
 Technical Library: www.onsemi.com/design/resources/technical-documentation
 onsemi Website: www.onsemi.com

ONLINE SUPPORT: www.onsemi.com/support
 For additional information, please contact your local Sales Representative at www.onsemi.com/support/sales