



Product Overview

NCP3125: Synchronous Buck Regulator, High Efficiency, Switching, PWM, 4.0 A

For complete documentation, see the data sheet

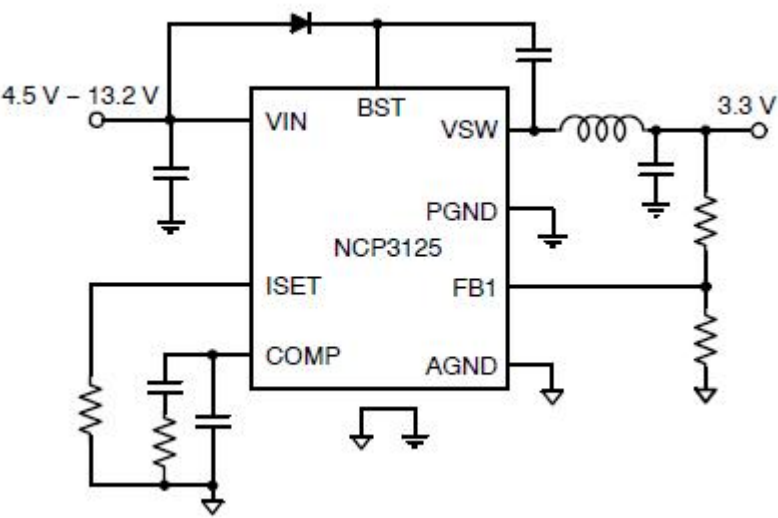
Product Description

The NCP3125 is a flexible synchronous PWM Switching Buck Regulator. The NCP3125 is capable of producing output voltages as low as 0.8 V. The NCP3125 also incorporates voltage mode control. To reduce the number of external components, a number of features are internally set, including soft-start and switching frequency. The NCP3125 is currently available in an SOIC-8 package. Family of parts that are pin to pin compatible. NCP3125 (4A), NCP3126 (3A), NCP3127 (2A)

Features	Benefits
<ul style="list-style-type: none">+5V or +12V Input Voltage60m High-side, 36m Low-side MOSFETOutput voltage adjustable down to 0.8V4A Continuous Output CurrentFixed 350kHz PWM Operation1.0% Initial Output AccuracyProgrammable Current LimitFamily of parts that are pin to pin compatible. NCP3125 (4A), NCP3126 (3A), NCP3127 (2A)	<ul style="list-style-type: none">Ability to use for various input voltagesHigh efficiency solution due to low RdsonAbility to output different voltagesHigh power density designsNo external components required to set frequencyHigh accuracy output and system designAbility to use high efficiency solution for lower output current

Applications	End Products
<ul style="list-style-type: none">High Efficiency DC-DC	<ul style="list-style-type: none">Set-Top-Box (STB)LCD-TV / DTV / PDP

Application Diagram



For more information please contact your local sales support at www.onsemi.com

Created on: 7/11/2015