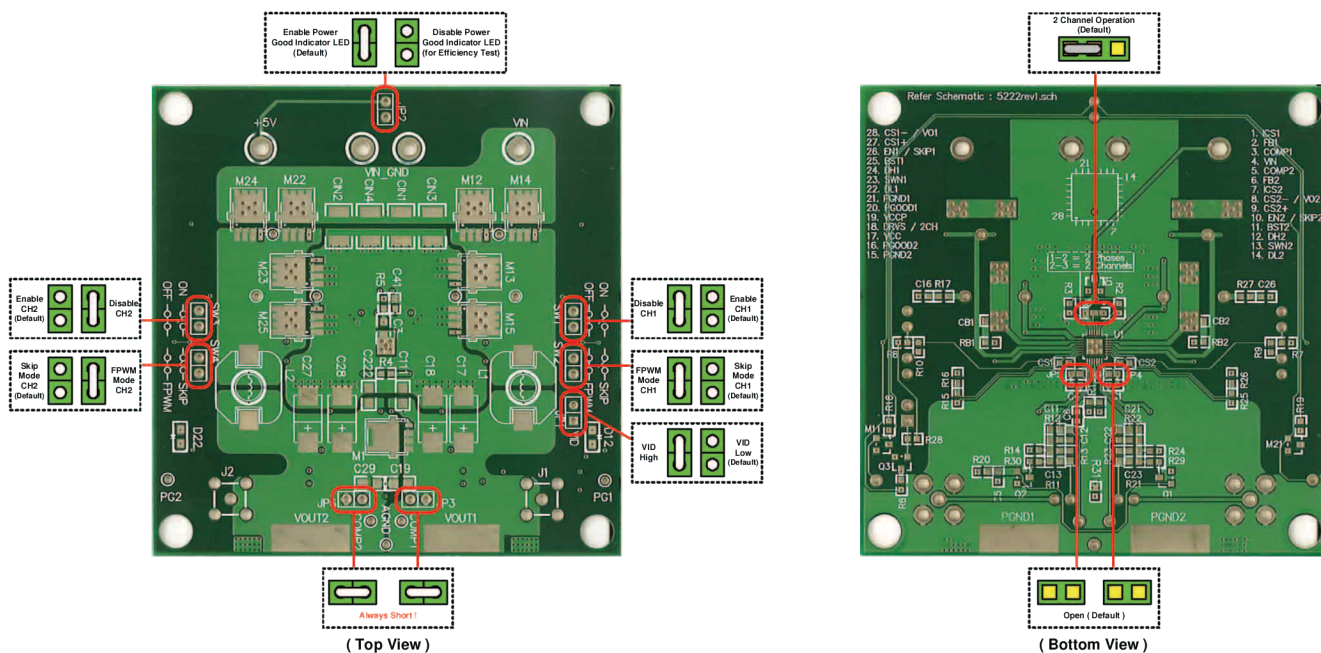




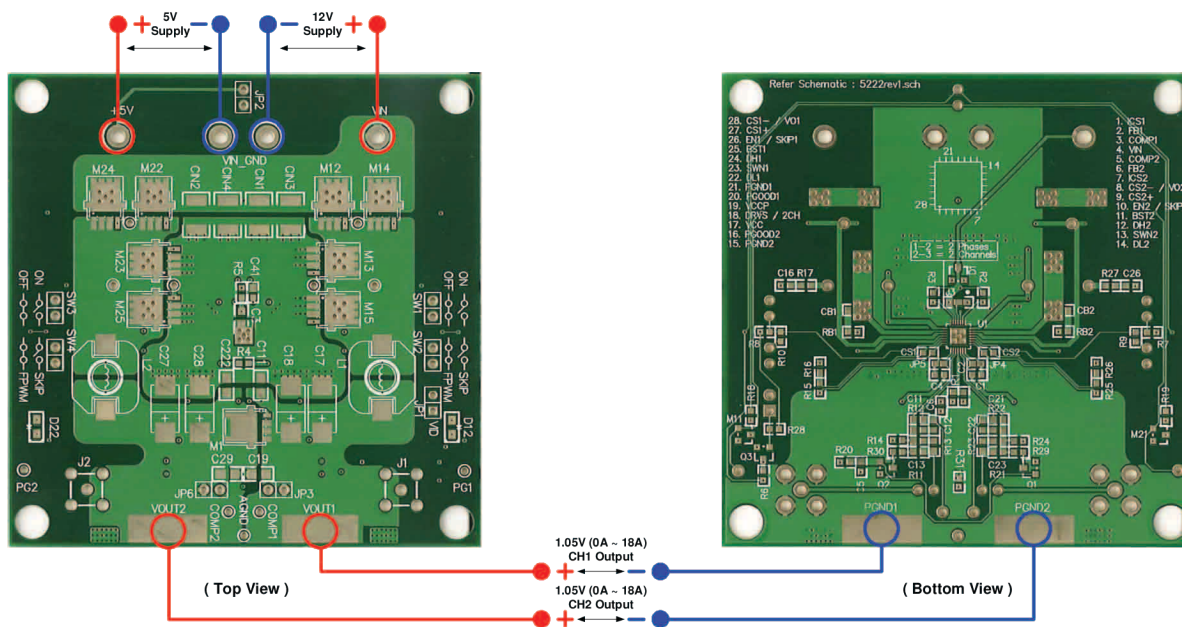
Test Procedure for the NCP5222GEVB Evaluation Board

1. Setup board jumpers according to default configuration.
2. Apply the two power supplies as shown in the test setup.
3. Check that both outputs are about 1.05 V at the output pads.
4. Apply 0 ~ 18 A load to VOUT2 and make sure the output at its pads is still about 1.05 V.
5. Repeat step 4 for VOUT1.

Note: When measuring voltage, make sure to take the measurement directly from the pads with test probes.



Jumper Setup of Evaluation Board



Test Setup of Evaluation Board