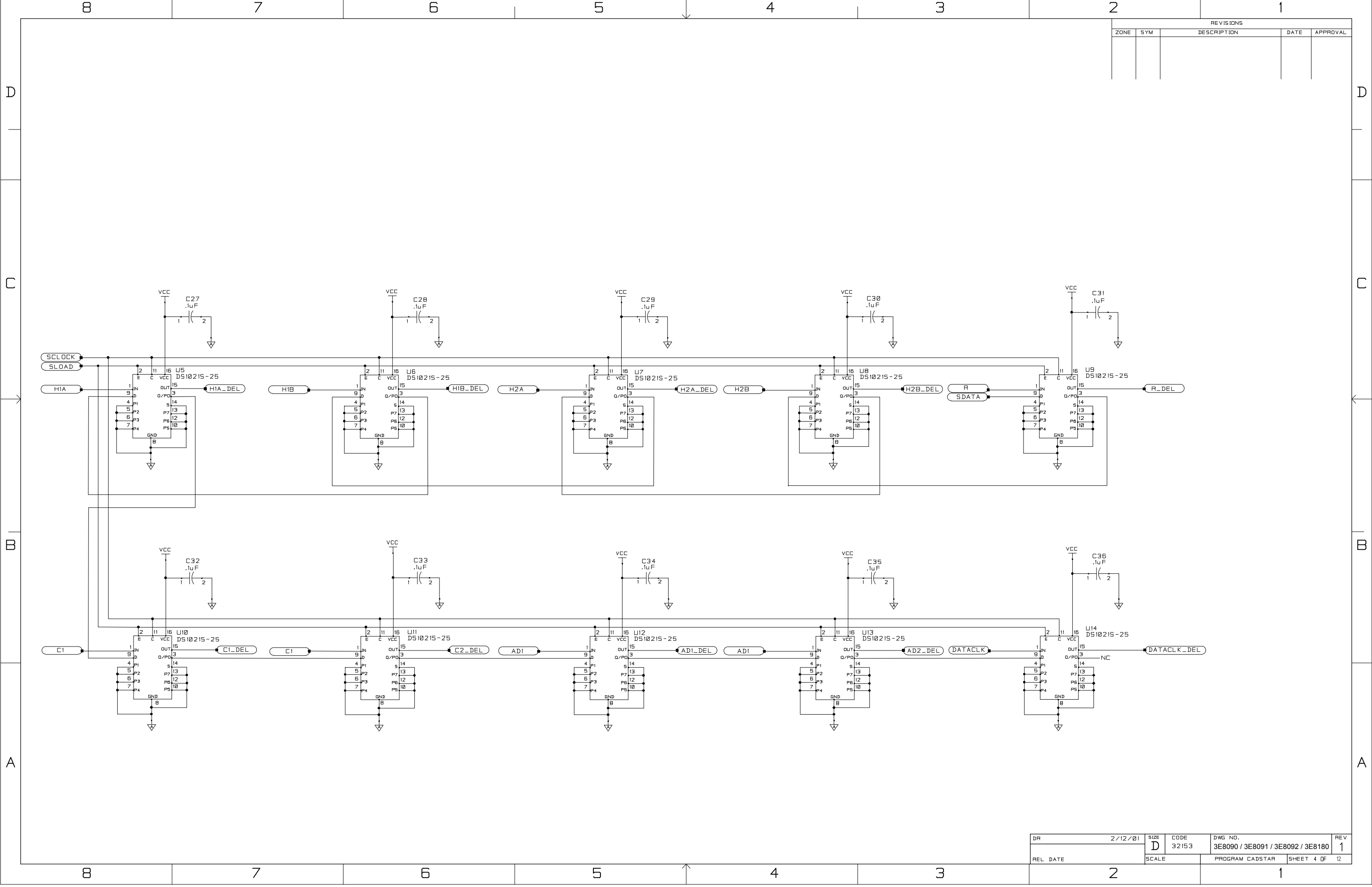


REVISIONS				
ZONE	SYM	DESCRIPTION	DATE	APPROVAL

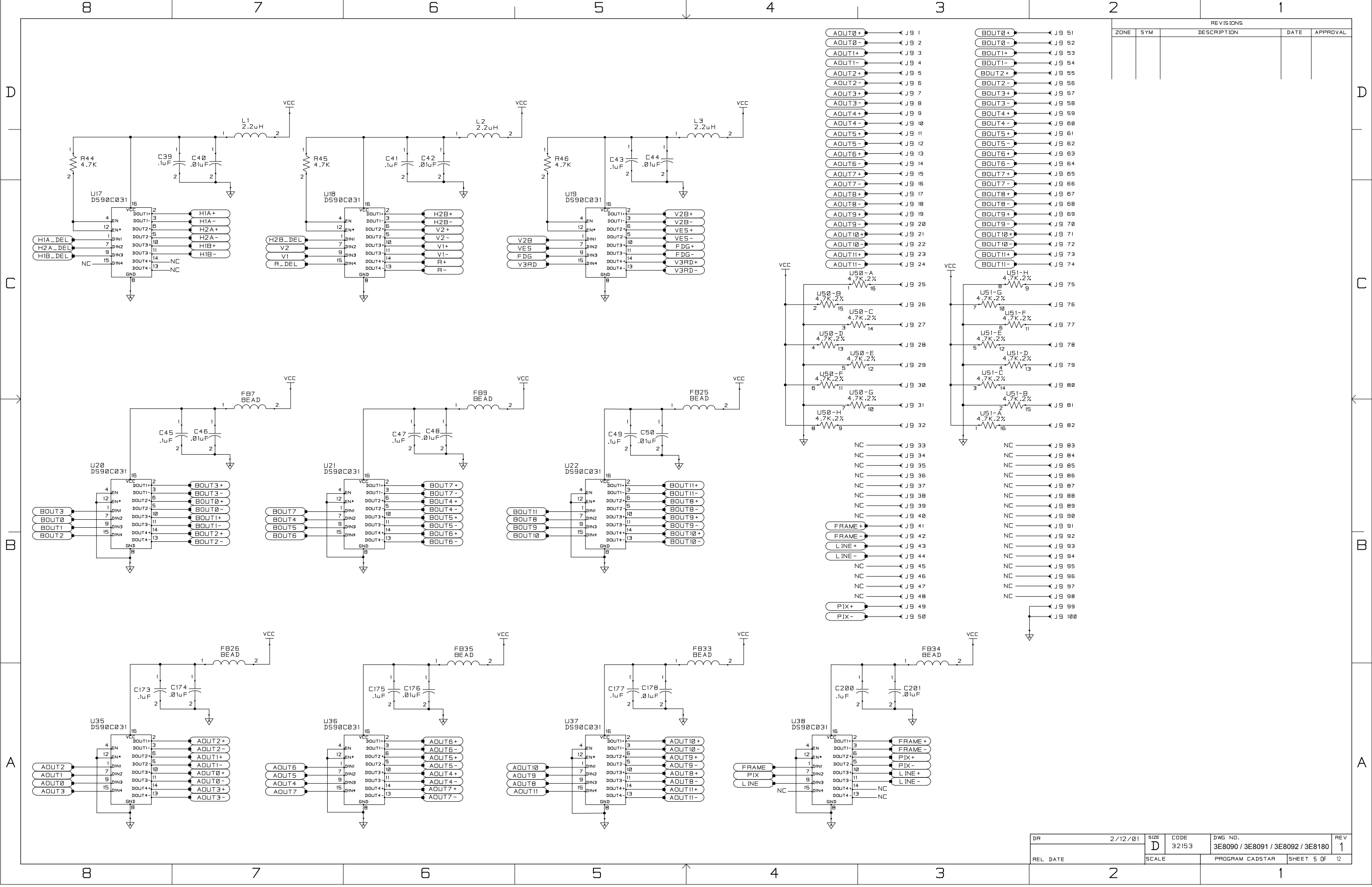
DR	2/12/01	SIZE	D	CODE	32153	DWG NO.	3E8090 / 3E8091 / 3E8092 / 3E8180	REV	1
REL DATE		SCALE		PROGRAM	CADSTAR	SHEET	2 OF 12		





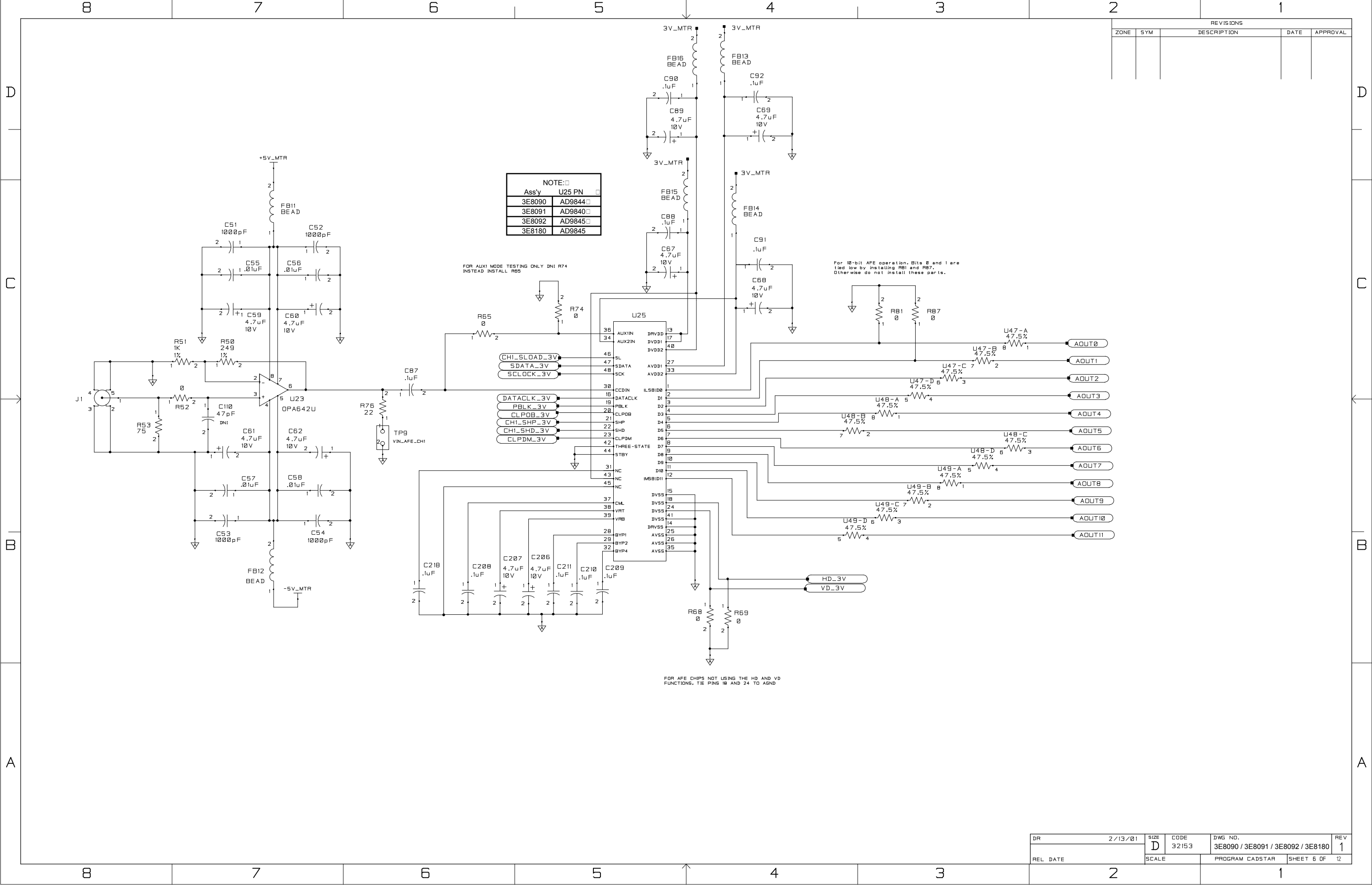
REVISIONS				
ZONE	SYM	DESCRIPTION	DATE	APPROVAL

DR	2/12/01	SIZE	D	CODE	32153	DWG NO.	3E8090 / 3E8091 / 3E8092 / 3E8180	REV	1
REL DATE	2	SCALE		PROGRAM	CADSTAR	SHEET	4 OF 12		



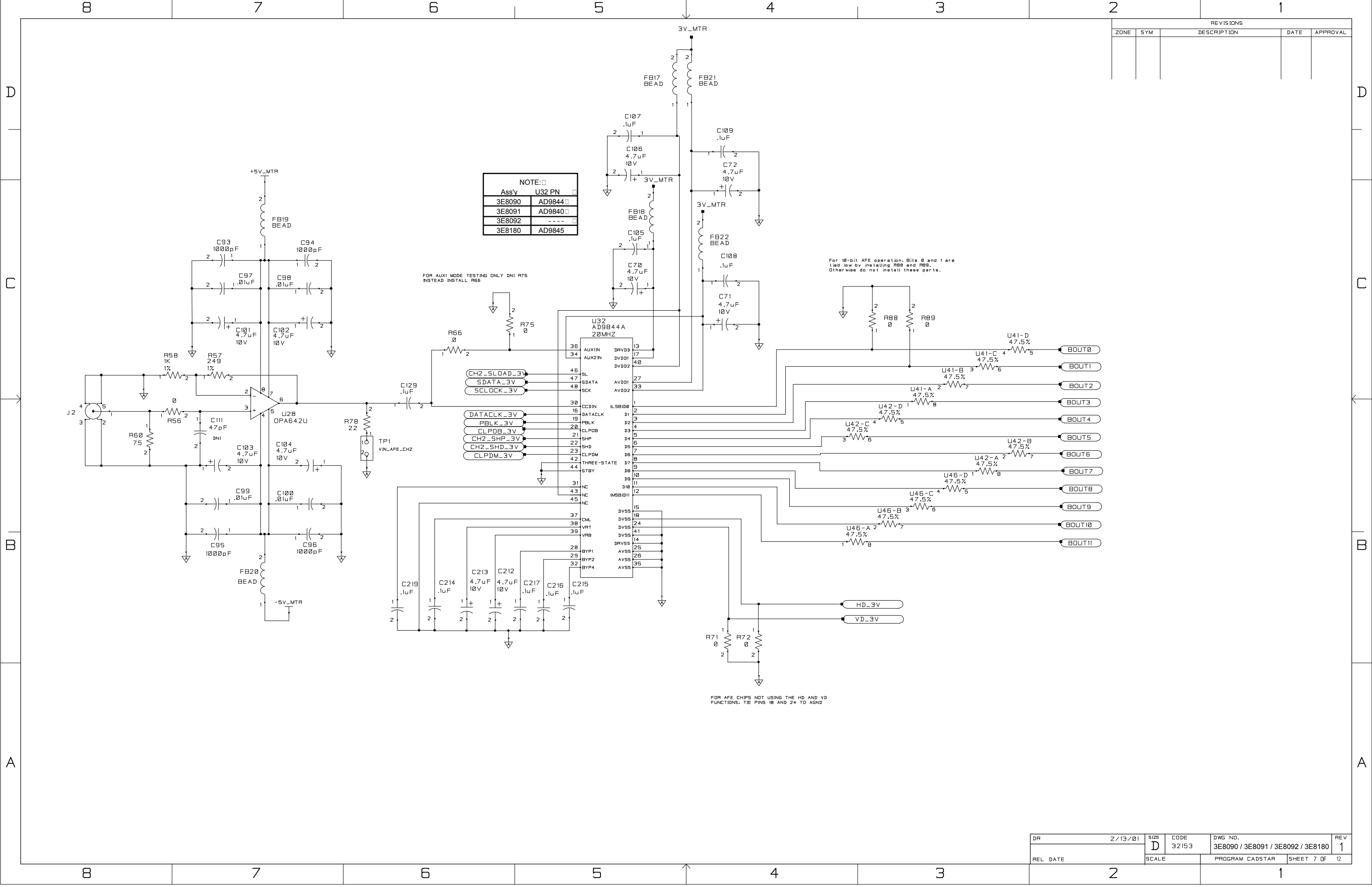
REVISIONS				
ZONE	SYM	DESCRIPTION	DATE	APPROVAL

DR	2/12/01	SIZE	D	CODE	32153	DWG NO.	3E8090 / 3E8091 / 3E8092 / 3E8180	REV	1
REL DATE		SCALE		PROGRAM	CADSTAR	SHEET	5 OF 12		



REVISIONS				
ZONE	SYM	DESCRIPTION	DATE	APPROVAL

DR	2/13/01	SIZE	D	CODE	32153	DWG NO.	3E8090 / 3E8091 / 3E8092 / 3E8180	REV	1
REL DATE		SCALE		PROGRAM	CADSTAR	SHEET	6 OF 12		



NOTE:	
Ass'y	U32 PN
3E8090	AD9844
3E8091	AD9840
3E8092	----
3E8180	AD9845

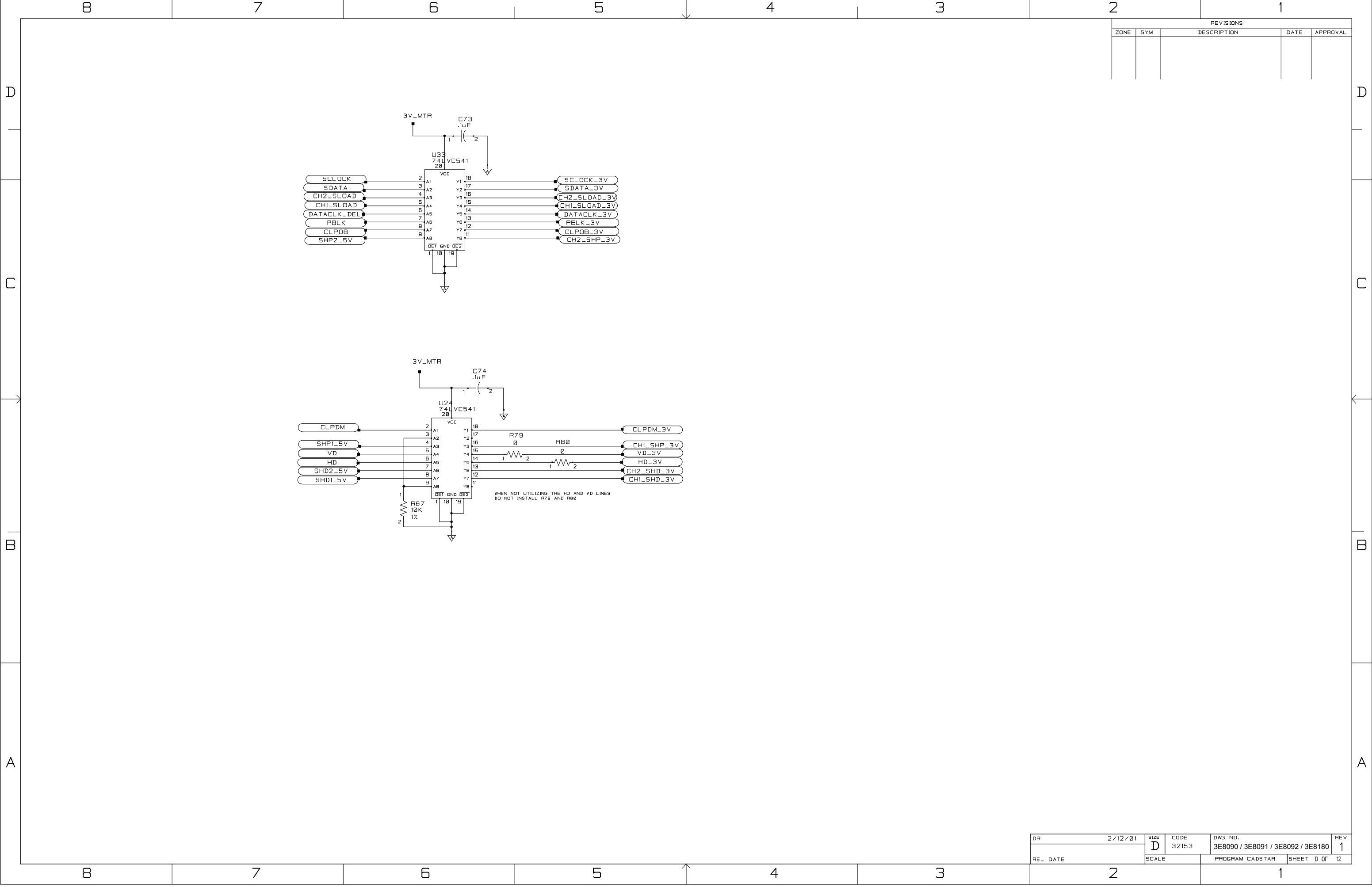
FOR AUX1 MODE TESTING ONLY DNI R75  
INSTEAD INSTALL R66

For 10-bit AFE operation, Bits 0 and 1 are  
tied low by installing R88 and R89.  
Otherwise do not install these parts.

FOR AFE CHIPS NOT USING THE HD AND VD  
FUNCTIONS, TIE PINS 18 AND 24 TO AGND

REVISIONS				
ZONE	SYM	DESCRIPTION	DATE	APPROVAL

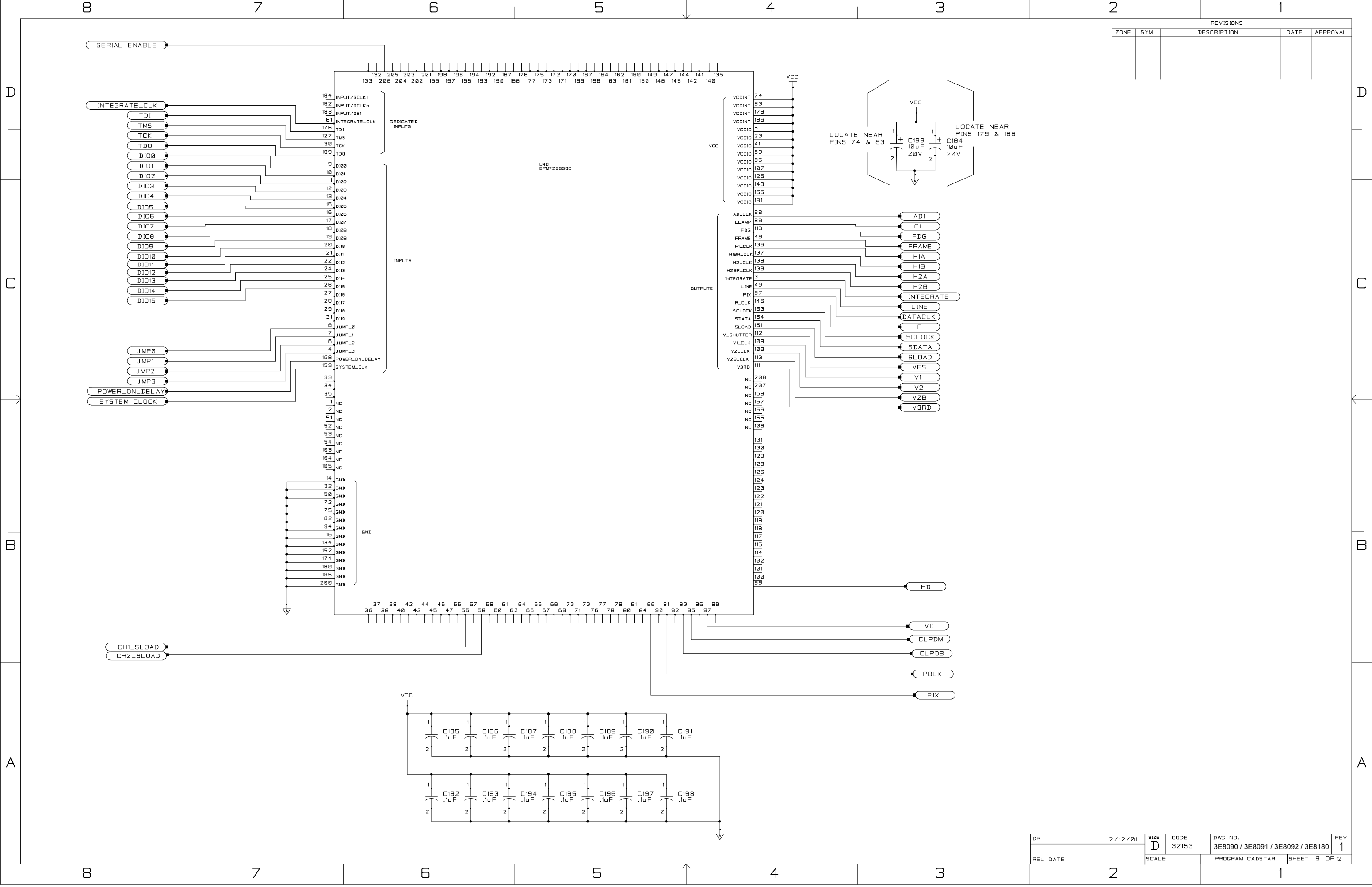
DR	2/13/01	SIZE	D	CODE	32153	DWG NO.	3E8090 / 3E8091 / 3E8092 / 3E8180	REV	1
REL DATE		SCALE		PROGRAM	CADSTAR	SHEET	7 OF 12		



REVISIONS				
ZONE	SYM	DESCRIPTION	DATE	APPROVAL

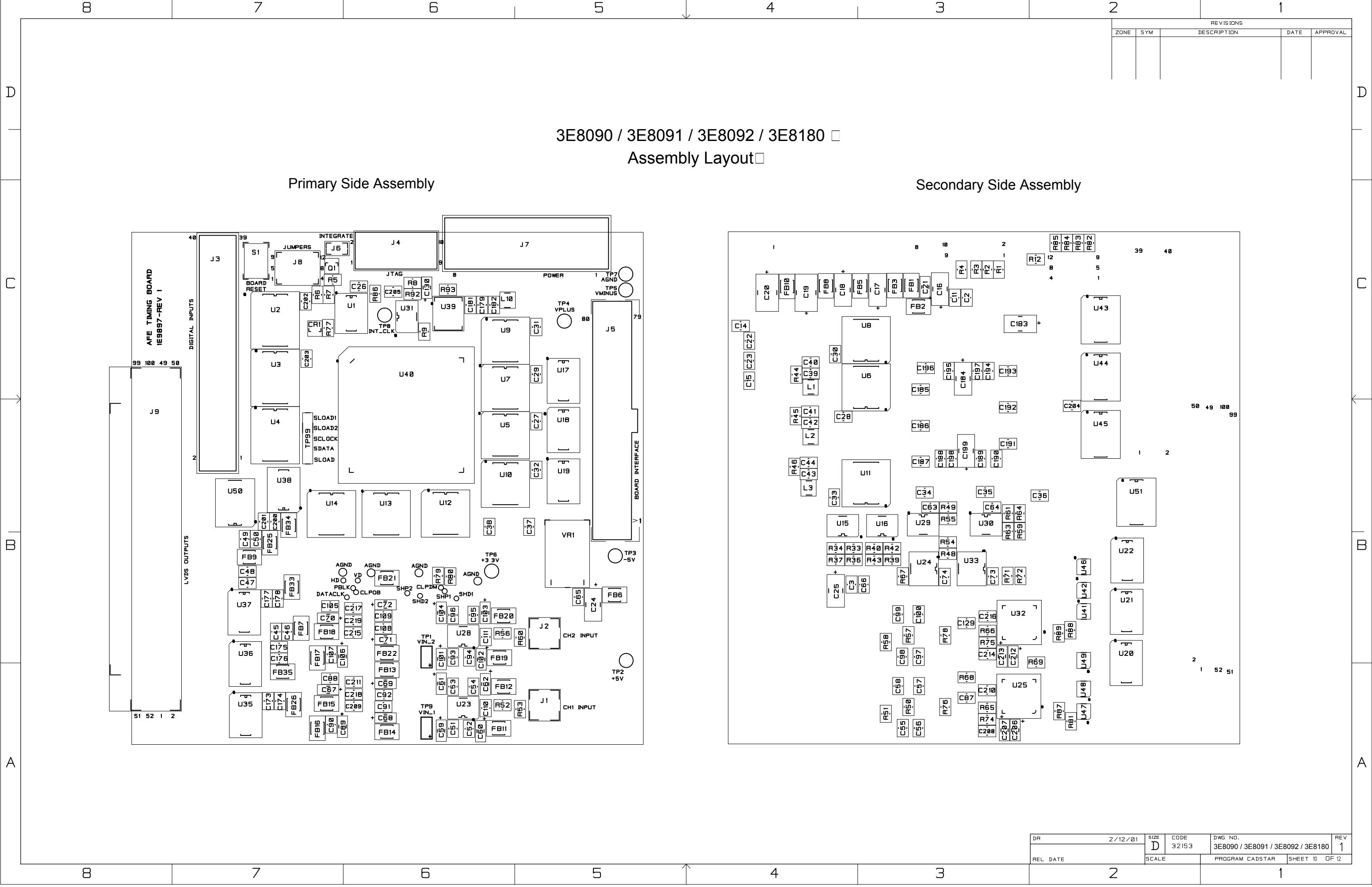
DR	2/12/01	SIZE D	CODE 32153	DWG NO. 3E8090 / 3E8091 / 3E8092 / 3E8180	REV 1
REL DATE	2	SCALE	PROGRAM CADSTAR	SHEET 8 OF 12	1





REVISIONS				
ZONE	SYM	DESCRIPTION	DATE	APPROVAL

DR	2/12/01	SIZE D	CODE 32153	DWG NO. 3E8090 / 3E8091 / 3E8092 / 3E8180	REV 1
REL DATE		SCALE	PROGRAM CADSTAR	SHEET 9 OF 12	



REVISIONS				
ZONE	SYM	DESCRIPTION	DATE	APPROVAL

DR	2/12/01	SIZE	D	CODE	32153	DWG NO.	3E8090 / 3E8091 / 3E8092 / 3E8180	REV	1
REL DATE		SCALE		PROGRAM	CADSTAR	SHEET	10	OF	12

KEMD #	MANUFACTURER	PART NUMBER	DESCRIPTION	QTY	REF
1E9897			PRINTED CIRCUIT BOARD	1	PCB
1E1112	COILCRAFT	1008CS-222XKBC	INDUCTOR, SMT, 2.2UH	4	L1-3, L10
233152	FAIR RITE	2743019447	FERRITE BEAD	26	FB1-3, FB5-22, FB25-26, FB33-35
236307	ON SEMICONDUCTOR	MMBT3640LT1	TRANSISTOR PNP	1	Q1
616293	ON SEMICONDUCTOR	MMBD914LT1	DIODE	1	CR1
254471	AVX	08055A102JATMA	CAP 1000PF,50VDC,5%	11	C2-3, C51-54, C93-96, C182
980646	KEMET	C0805C103K5RAC	CAP .01UF,50VDC,10%	19	C40, C42, C44, C46, C48, C50, C55-58, C97-100, C174, C176, C178, C181
7B9716	KEMET	C0805C104K5RAC	CAP .1UF,50VDC,10%	73	C11, C14-15, C22-23, C26-39, C41, C43, C45, C47, C49, C63-66, C73-74, C87-88, C90-92, C107-109, C129, C173, C175, C177, C179, C185-198, C200, C202-205, C208-211, C214-219
785076	HITACHI	TMC-MA1E105MTR	CAP 1UF, 25VDC,20%	2	C21, C130
335666	KEMET	T491A475M010AS	CAP 4.7UF, 10VDC,20%	20	C59-62, C67-72, C89, C101-104, C106, C206-207, C212-213
254350	HITACHI	TMC-SD1E106KTR	CAP 10UF,25VDC,10%	2	C19-20
258541	HITACHI	TMCMC1D106MTR	CAP 10UF,20VDC,20%	8	C16-18, C24-25, C183-184, C199
257516	DALE ELECTRONICS	CRCW0805-000	RESISTOR 0 OHM	16	R33, R37, R39, R43, R48, R52, R55-56, R59, R64, R68-69, R71-72, R74-75
954554	DALE ELECTRONICS	CRCW080575R0-FT	RESISTOR 75 OHM, 1/10W,1%	2	R53, R60
902504	DALE ELECTRONICS	CRCW08052490FT	RESISTOR 249 OHM, 1/10W,1%	2	R50, R57
250796	DALE ELECTRONICS	CRCW0805102JT	RESISTOR 1K, 1/10W,5%	7	R1-4, R9, R51, R58
253549	DALE ELECTRONICS	CRCW0805-472-JT	RESISTOR 4.7 KOHM 5%	9	R44-46, R82-86, R93
233981	DALE ELECTRONICS	CRCW08051002FT	RESISTOR 10K, 1/10W,1%	4	R5, R12, R67, R77
255345	DALE ELECTRONICS	CRCW0805220FT	RESISTOR 22, 1/10W,5%	2	R76, R78
283606	DALE ELECTRONICS	CRCW0805471JT	RESISTOR 470, 1/10W, 5%	1	R92
902559	DALE ELECTRONICS	CRCW08054990FT	RESISTOR 499, 1/10W, 1%	1	R8
961202	DALE ELECTRONICS	CRCW0805-5R1-JT	RESISTOR 5.1 OHM, 1/10W,5%	2	R6-7
7B9962	DALE ELECTRONICS	CRA06P0803470J	RESISTOR NET 47 OHM	6	U41-42, U46-49
283585	DALE ELECTRONICS	SOMC-1603-472G	RESISTOR NET 4.7K OHM, 2%	5	U43-45, U50-51
5C2045	DALLAS SEMI	DS1040Z-A15	PROG ONE SHOT	4	U15-16, U29-30
5C2040	BURR BROWN	OPA642U	OPAMP	2	U23, U28
3H5151	TEXAS INSTR.	SN74LVC541APWR	LVC BUFFER	2	U24, U33
3H0744	DALLAS SEMI	DS1021S-25	PROG DELAY LINE	10	U5-14
5C2042	NATIONAL SEMI	DS90C031TM	LVDS DRIVER	10	U17-22, U35-38
7H0724	ALTERA	EPM7256SQC208-10	MAX 7000S DEVICE	1	U40
263526	TEXAS INSTR.	SN74HC14D	HEX INVERTER	1	U1
263515	NATIONAL SEMI	LMC555CM	CMOS TIMER	1	U31
903888	MOTOROLA	MC74ACT541DW	OCTAL BUFFER INVERTING	3	U2-4
4B4462	FOX ELECT.	F3345-40.0MHZ	40 MHZ OSC	1	U39
5E5543	ANALOG DEVICES	AD9844AJST	12BIT 20MHZ AFE	2	U25, U32
4B4595	LINEAR TECH	LT1086CM-3.3	3.3V REGULATOR	1	VR1
449610	AUGAT	TPA11CGPCO	SWITCH SPST	1	S1
7E7653	WEIDMULLER	151321	8-PIN PWR HEADER, RT ANGLE	1	J7
954067	AMP	103309-1	10-PIN JTAG HEADER	1	J4
999979	AMP	104549-9	80 PIN CONNECTOR	1	J5
7E7514	AMP	103309-8	DIO CONN, 40-PIN	1	J3
6C4636	AMP	414244-1	SMB CONNECTOR	2	J1-2
7E7518	AMP	1-103321-2	BREAKAWAY STRIP HEADER	1	J8
7E7518	AMP	1-103321-2	BREAKAWAY STRIP HEADER	1	J6
5C3152	AMP	787082-9	100-PIN D-SUB, RT ANGLE	1	J9
901613	COMPONENT CORP.	TP-104-01-00	TEST POINT,BLACK	1	TP7
901614	COMPONENT CORP.	TP-104-01-02	TEST POINT,RED	6	TP2-6, TP8
7E7662	AMP	103321-0	5 POS TP (BREAKAWAY STRIP)	1	TP99

**DO NOT INSTALL:**  
TP1, TP9  
R34, R36, R40, R42, R49, R54, R61, R63, R65-66, R79-81, R87-89  
C110-C111

KEMD #	MANUFACTURER	PART NUMBER	DESCRIPTION	QTY	REF
1E9897			PRINTED CIRCUIT BOARD	1	PCB
1E1112	COILCRAFT	1008CS-222XKBC	INDUCTOR, SMT, 2.2UH	4	L1-3, L10
233152	FAIR RITE	2743019447	FERRITE BEAD	26	FB1-3, FB5-22, FB25-26, FB33-35
236307	ON SEMI	MMBT3640LT1	TRANSISTOR PNP	1	Q1
616293	ON SEMI	MMBD914LT1	DIODE	1	CR1
254471	AVX	08055A102JATMA	CAP 1000PF,50VDC,5%	11	C2-3, C51-54, C93-96, C182
980646	KEMET	C0805C103K5RAC	CAP .01UF,50VDC,10%	19	C40,C42,C44,C46,C48,C50,C55-58, C55-58,C97-100,C174,C176,C178, C181,C201
7B9716	KEMET	C0805C104K5RAC	CAP .1UF,50VDC,10%	73	C11,C14-15,C22-23,C26-39,C41,C43,C45, C47,C49,C63-66,C73-74,C87-88, C90-92, C107-109,C129,C173,C175,C177,C179, C185-198,C200, C202-205, C208-211, C214-219
785076	HITACHI	TMC-MA1E105MTR	CAP 1UF,25VDC,20%	2	C21, C130
335666	KEMET	T491A475M010AS	CAP 4.7UF,10VDC,20%	20	C59-62,C67-72,C89,C101-104,C106, C206-207, C212-213
254350	HITACHI	TMC-SD1E106KTR	CAP 10UF,25VDC,10%	2	C19-20
258541	HITACHI	TMCMC1D106MTR	CAP 10UF,20VDC,20%	8	C16-18, C24-25, C183-184, C199
257516	DALE ELECTRONICS	CRCW0805-000	RESISTOR 0 OHM	20	R33, R37, R39, R43,R48, R52,R55-56, R59, R64, R68-69, R71-72, R74-75, R81, R87-89
954554	DALE ELECTRONICS	CRCW080575R0-FT	RESISTOR 75 OHM, 1/10W,1%	2	R53, R60
902504	DALE ELECTRONICS	CRCW08052490FT	RESISTOR 249 OHM, 1/10W,1%	2	R50, R57
283606	DALE ELECTRONICS	CRCW0805471JT	RESISTOR 470, 1/10W,5%	1	R92
902559	DALE ELECTRONICS	CRCW08054990FT	RESISTOR 499, 1/10W,1%	1	R8
250796	DALE ELECTRONICS	CRCW0805102JT	RESISTOR 1K, 1/10W,5%	7	R1-4, R9, R51, R58
253549	DALE ELECTRONICS	CRCW0805-472-JT	RESISTOR 4.7 KOHM 5%	9	R44-46, R82-86, R93
233981	DALE ELECTRONICS	CRCW08051002FT	RESISTOR 10K, 1/10W,1%	4	R5, R12, R67, R77
255345	DALE ELECTRONICS	CRCW0805220FT	RESISTOR 22, 1/10W,5%	2	R76, R78
961202	DALE ELECTRONICS	CRCW0805-5R1-JT	RESISTOR 5.1 OHM, 1/10W,5%	2	R6-7
7B9962	DALE ELECTRONICS	CRA06P0803470J	RESISTOR NET 47 OHM	6	U41-42, U46-49
283585	DALE ELECTRONICS	SOMC-1603-472G	RESISTOR NET 4.7K OHM, 2%	5	U43-45, U50-51
5C2045	DALLAS SEMI	DS1040Z-A15	PROG ONE SHOT	4	U15-16, U29-30
5C2040	BURR BROWN	OPA642U	OPAMP	2	U23, U28
3H5151	TEXAS INSTR.	SN74LVC541APWR	LVC BUFFER	2	U24, U33
3H0744	DALLAS SEMI	DS1021S-25	PROG DELAY LINE	10	U5-14
5C2042	NATIONAL SEMI	DS90C031TM	LVDS DRIVER	10	U17-22, U35-38
7H0724	ALTERA	EPM7256SQC208-10	MAX 7000S DEVICE	1	U40
263526	TEXAS INSTR.	SN74HC14D	HEX INVERTER	1	U1
263515	NATIONAL SEMI	LMC555CM	CMOS TIMER	1	U31
903888	MOTOROLA	MC74ACT541DW	OCTAL BUFFER INVERTING	3	U2-4
4B4469	FOX ELECT.	F3345-80.0MHZ	80 MHZ OSC	1	U39
	ANALOG DEVICES	AD9840AJST	10BIT 40MHZ AFE	2	U25, U32
4B4595	LINEAR TECH	LT1086CM-3.3	3.3V REGULATOR	1	VR1
449610	AUGAT	TPA11CGPCO	SWITCH SPST	1	S1
7E7653	WEIDMULLER	151321	8-PIN PWR HEADER, RT ANGLE	1	J7
954067	AMP	103309-1	10-PIN JTAG HEADER	1	J4
999979	AMP	104549-9	80 PIN CONNECTOR	1	J5
7E7514	AMP	103309-8	DIO CONN, 40-PIN	1	J3
6C4636	AMP	414244-1	SMB CONNECTOR	2	J1-2
7E7518	AMP	1-103321-2	BREAKAWAY STRIP HEADER	1	J8
7E7518	AMP	1-103321-2	BREAKAWAY STRIP HEADER	1	J6
5C3152	AMP	787082-9	100-PIN D-SUB, RT ANGLE	1	J9
901613	COMPONENT CORP.	TP-104-01-00	TEST POINT,BLACK	1	TP7
901614	COMPONENT CORP.	TP-104-01-02	TEST POINT,RED	6	TP2-6, TP8
7E7662	AMP	103321-0	5 POS TP, BREAKAWAY STRIP	1	TP99

**DO NOT INSTALL:**  
TP1, TP9  
R36, R34, R40, R42, R54, R49, R61, R63, R65-66, R79-80  
C110-C111

DR	2/12/01	SIZE D	CODE 32153	DWG NO. 3E8090 / 3E8091 / 3E8092 / 3E8180	REV 1
REL DATE		SCALE		PROGRAM CADSTAR	SHEET 11 OF 12

KEMD #	MANUFACTURER	PART NUMBER	DESCRIPTION	QTY	REF
1E9897			PRINTED CIRCUIT BOARD	1	PCB
1E1112	COILCRAFT	1008CS-222XKBC	INDUCTOR, SMT, 2.2UH	4	L1-3, L10
233152	FAIR RITE	2743019447	FERRITE BEAD	17	FB1-3,FB5-6,FB8,FB10-16,FB26,FB33-35
236307	ON SEMICONDUCTOR	MMBT3640LT1	TRANSISTOR PNP	1	Q1
616293	ON SEMICONDUCTOR	MMBD914LT1	DIODE	1	CR1
254471	AVX	08055A102JATMA	CAP 1000PF,50VDC,5%	7	C2-3,C51-54,C182
980646	KEMET	C0805C103K5RAC	CAP .01UF,50VDC,10%	12	C40,C42,C44,C55-58,C174,C176,C178,C181,C201
7B9716	KEMET	C0805C104K5RAC	CAP .1UF,50VDC,10%	59	C11,C14-15,C22-23,C26-39,C41,C43,C63-66,C73-74,C87-88,C90-92,C173,C175,C177,C179,C185-198,C200,C202-205,C208-211,C218
785076	HITACHI	TMC-MA1E105MTR	CAP 1UF,25VDC,20%	2	C21,C130
335666	KEMET	T491A475M010AS	CAP 4.7UF,10VDC,20%	10	C59-62,C67-69,C89,C206-207
254350	HITACHI	TMC-SD1E106KTR	CAP 10UF,25VDC,10%	2	C19-20
258541	HITACHI	TMCMC1D106MTR	CAP 10UF,20VDC,20%	8	C16-18,C24-25,C183-184,C199
257516	DALE ELECTRONICS	CRCW0805-000	RESISTOR 0 OHM	8	R33,R37,R48,R52,R55,R68-69,R74
954554	DALE ELECTRONICS	CRCW080575R0-FT	RESISTOR 75 OHM, 1/10W,1%	1	R53
902504	DALE ELECTRONICS	CRCW08052490FT	RESISTOR 249 OHM, 1/10W,1%	1	R50
250796	DALE ELECTRONICS	CRCW0805102JT	RESISTOR 1K, 1/10W,5%	6	R1-4,R9,R51
253549	DALE ELECTRONICS	CRCW0805-472-JT	RESISTOR 4.7 KOHM 5%	9	R44-46,R82-86,R93
233981	DALE ELECTRONICS	CRCW08051002FT	RESISTOR 10K, 1/10W,1%	4	R5,R12,R67,R77
255345	DALE ELECTRONICS	CRCW0805220FT	RESISTOR 22, 1/10W,5%	1	R76
283606	DALE ELECTRONICS	CRCW0805471JT	RESISTOR 470, 1/10W,5%	1	R92
902559	DALE ELECTRONICS	CRCW08054990FT	RESISTOR 499, 1/10W,1%	1	R8
961202	DALE ELECTRONICS	CRCW0805-5R1-JT	RESISTOR 5.1 OHM, 1/10W,5%	2	R6-7
7B9962	DALE ELECTRONICS	CRA06P0803470J	RESISTOR NET 47 OHM	3	U47-49
283585	DALE ELECTRONICS	SOMC-1603-472G	RESISTOR NET 4.7K OHM, 2%	5	U43-45,U50-51
5C2045	DALLAS SEMI	DS1040Z-A15	PROG ONE SHOT	2	U15,U29
5C2040	BURR BROWN	OPA642U	OPAMP	1	U23
3H5151	TEXAS INSTR.	SN74LVC541APWR	LVC BUFFER	2	U24,U33
3H0744	DALLAS SEMI	DS1021S-25	PROG DELAY LINE	10	U5-14
5C2042	NATIONAL SEMI	DS90C031TM	LVDS DRIVER	7	U17-19,U35-38
7H0724	ALTERA	EPM7256SQC208-10	MAX 7000S DEVICE	1	U40
263526	TEXAS INSTRUMENTS	SN74HC14D	HEX INVERTER	1	U1
263515	NATIONAL SEMI	LMC555CM	CMOS TIMER	1	U31
903888	MOTOROLA	MC74ACT541DW	OCTAL BUFFER INVERTING	3	U2-4
	FOX ELECT.	F3345-56.0MHZ	56 MHZ OSC	1	U39
7E7671	ANALOG DEVICES	AD9845AJST	12BIT 30MHZ AFE	1	U25
4B4595	LINEAR TECH	LT1086CM-3.3	3.3V REGULATOR	1	VR1
449610	AUGAT	TPA11CGPCO	SWITCH SPST	1	S1
7E7653	WEIDMULLER	151321	8-PIN PWR HEADER, RT ANGLE	1	J7
954067	AMP	103309-1	10-PIN JTAG HEADER	1	J4
999979	AMP	104549-9	80 PIN CONNECTOR	1	J5
7E7514	AMP	103309-8	DIO CONN, 40-PIN	1	J3
6C4636	AMP	414244-1	SMB CONNECTOR	1	J1
7E7518	AMP	1-103321-2	BREAKAWAY STRIP HEADER	1	J8
7E7518	AMP	1-103321-2	BREAKAWAY STRIP HEADER	1	J6
5C3152	AMP	787082-9	100-PIN D-SUB, RT ANGLE	1	J9
901613	COMPONENT CORP.	TP-104-01-00	TEST POINT,BLACK	1	TP7
901614	COMPONENT CORP.	TP-104-01-02	TEST POINT,RED	6	TP2-6, TP8
7E7662	AMP	103321-0	5 POS TP (BREAKAWAY STRIP)	1	TP99

**DO NOT INSTALL:**  
 TP1, TP9  
 J2  
 U16, U20-22, U28, U30, U32, U41-42, U46  
 R34, R36, R39-40, R42-43, R49, R54, R56-61, R63-66, R71-72, R75, R78-81, R87-89  
 C45-50, C70-72, C93-111, C129, C212-217, C219  
 FB7, FB9, FB17-22, FB25

KEMD #	MANUFACTURER	PART NUMBER	DESCRIPTION	QTY	REF
1E9897			PRINTED CIRCUIT BOARD	1	PCB
1E1112	COILCRAFT	1008CS-222XKBC	INDUCTOR, SMT, 2.2UH	4	L1-3, L10
233152	FAIR RITE	2743019447	FERRITE BEAD	26	FB1-3, FB5-22, FB25-26, FB33-35
236307	ON SEMICONDUCTOR	MMBT3640LT1	TRANSISTOR PNP	1	Q1
616293	ON SEMICONDUCTOR	MMBD914LT1	DIODE	1	CR1
254471	AVX	08055A102JATMA	CAP 1000PF,50VDC,5%	11	C2-3, C51-54, C93-96, C182
980646	KEMET	C0805C103K5RAC	CAP .01UF,50VDC,10%	19	C40, C42, C44, C46, C48, C50, C55-58, C97-100, C174, C176, C178, C181, C201
7B9716	KEMET	C0805C104K5RAC	CAP .1UF,50VDC,10%	73	C11, C14-15, C22-23, C26-39, C41, C43, C45, C47, C49, C63-66, C73-74, C87-88, C90-92, C107-109, C129, C173, C175, C177, C179, C185-198, C200, C202-205, C208-211, C214-219
785076	HITACHI	TMC-MA1E105MTR	CAP 1UF,25VDC,20%	2	C21, C130
335666	KEMET	T491A475M010AS	CAP 4.7UF,10VDC,20%	20	C59-62, C67-72, C89, C101-104, C106, C206-207, C212-213
254350	HITACHI	TMC-SD1E106KTR	CAP 10UF,25VDC,10%	2	C19-20
258541	HITACHI	TMCMC1D106MTR	CAP 10UF,20VDC,20%	8	C16-18, C24-25, C183-184, C199
257516	DALE ELECTRONICS	CRCW0805-000	RESISTOR 0 OHM	16	R33, R37, R39, R43, R48, R52, R55-56, R59, R64, R68-69, R71-72, R74-75
954554	DALE ELECTRONICS	CRCW080575R0-FT	RESISTOR 75 OHM, 1/10W,1%	2	R53, R60
902504	DALE ELECTRONICS	CRCW08052490FT	RESISTOR 249 OHM, 1/10W,1%	2	R50, R57
250796	DALE ELECTRONICS	CRCW0805102JT	RESISTOR 1K, 1/10W,5%	7	R1-4, R9, R51, R58
253549	DALE ELECTRONICS	CRCW0805-472-JT	RESISTOR 4.7 KOHM 5%	9	R44-46, R82-86, R93
233981	DALE ELECTRONICS	CRCW08051002FT	RESISTOR 10K, 1/10W,1%	4	R5, R12, R67, R77
255345	DALE ELECTRONICS	CRCW0805220FT	RESISTOR 22, 1/10W,5%	2	R76, R78
283606	DALE ELECTRONICS	CRCW0805471JT	RESISTOR 470, 1/10W, 5%	1	R92
902559	DALE ELECTRONICS	CRCW08054990FT	RESISTOR 499, 1/10W, 1%	1	R8
961202	DALE ELECTRONICS	CRCW0805-5R1-JT	RESISTOR 5.1 OHM, 1/10W,5%	2	R6-7
7B9962	DALE ELECTRONICS	CRA06P0803470J	RESISTOR NET 47 OHM	6	U41-42, U46-49
283585	DALE ELECTRONICS	SOMC-1603-472G	RESISTOR NET 4.7K OHM, 2%	5	U43-45, U50-51
5C2045	DALLAS SEMI	DS1040Z-A15	PROG ONE SHOT	4	U15-16, U29-30
5C2040	BURR BROWN	OPA642U	OPAMP	2	U23, U28
3H5151	TEXAS INSTR.	SN74LVC541APWR	LVC BUFFER	2	U24, U33
3H0744	DALLAS SEMI	DS1021S-25	PROG DELAY LINE	10	U5-14
5C2042	NATIONAL SEMI	DS90C031TM	LVDS DRIVER	10	U17-22, U35-38
7H0724	ALTERA	EPM7256SQC208-10	MAX 7000S DEVICE	1	U40
263526	TEXAS INSTR.	SN74HC14D	HEX INVERTER	1	U1
263515	NATIONAL SEMI	LMC555CM	CMOS TIMER	1	U31
903888	MOTOROLA	MC74ACT541DW	OCTAL BUFFER INVERTING	3	U2-4
6C4961	FOX ELECT.	F3345-60.0MHZ	60 MHZ OSC	1	U39
7E7671	ANALOG DEVICES	AD9845AJST	12BIT 30MHZ AFE	2	U25, U32
4B4595	LINEAR TECH	LT1086CM-3.3	3.3V REGULATOR	1	VR1
449610	AUGAT	TPA11CGPCO	SWITCH SPST	1	S1
7E7653	WEIDMULLER	151321	8-PIN PWR HEADER, RT ANGLE	1	J7
954067	AMP	103309-1	10-PIN JTAG HEADER	1	J4
999979	AMP	104549-9	80 PIN CONNECTOR	1	J5
7E7514	AMP	103309-8	DIO CONN, 40-PIN	1	J3
6C4636	AMP	414244-1	SMB CONNECTOR	2	J1-2
7E7518	AMP	1-103321-2	BREAKAWAY STRIP HEADER	1	J8
7E7518	AMP	1-103321-2	BREAKAWAY STRIP HEADER	1	J6
5C3152	AMP	787082-9	100-PIN D-SUB, RT ANGLE	1	J9
901613	COMPONENT CORP.	TP-104-01-00	TEST POINT,BLACK	1	TP7
901614	COMPONENT CORP.	TP-104-01-02	TEST POINT,RED	6	TP2-6, TP8
7E7662	AMP	103321-0	5 POS TP (BREAKAWAY STRIP)	1	TP99

**DO NOT INSTALL:**  
TP1, TP9  
R34, R36, R40, R42, R49, R54, R61, R63, R65-66, R79-81, R87-89  
C110-C111

DR	2/12/01	SIZE D	CODE 32153	DWG NO. 3E8090 / 3E8091 / 3E8092 / 3E8180	REV 1
REL DATE		SCALE	PROGRAM CADSTAR	SHEET 12 OF 12	