

6

5

4

3

2

1

D

C

B

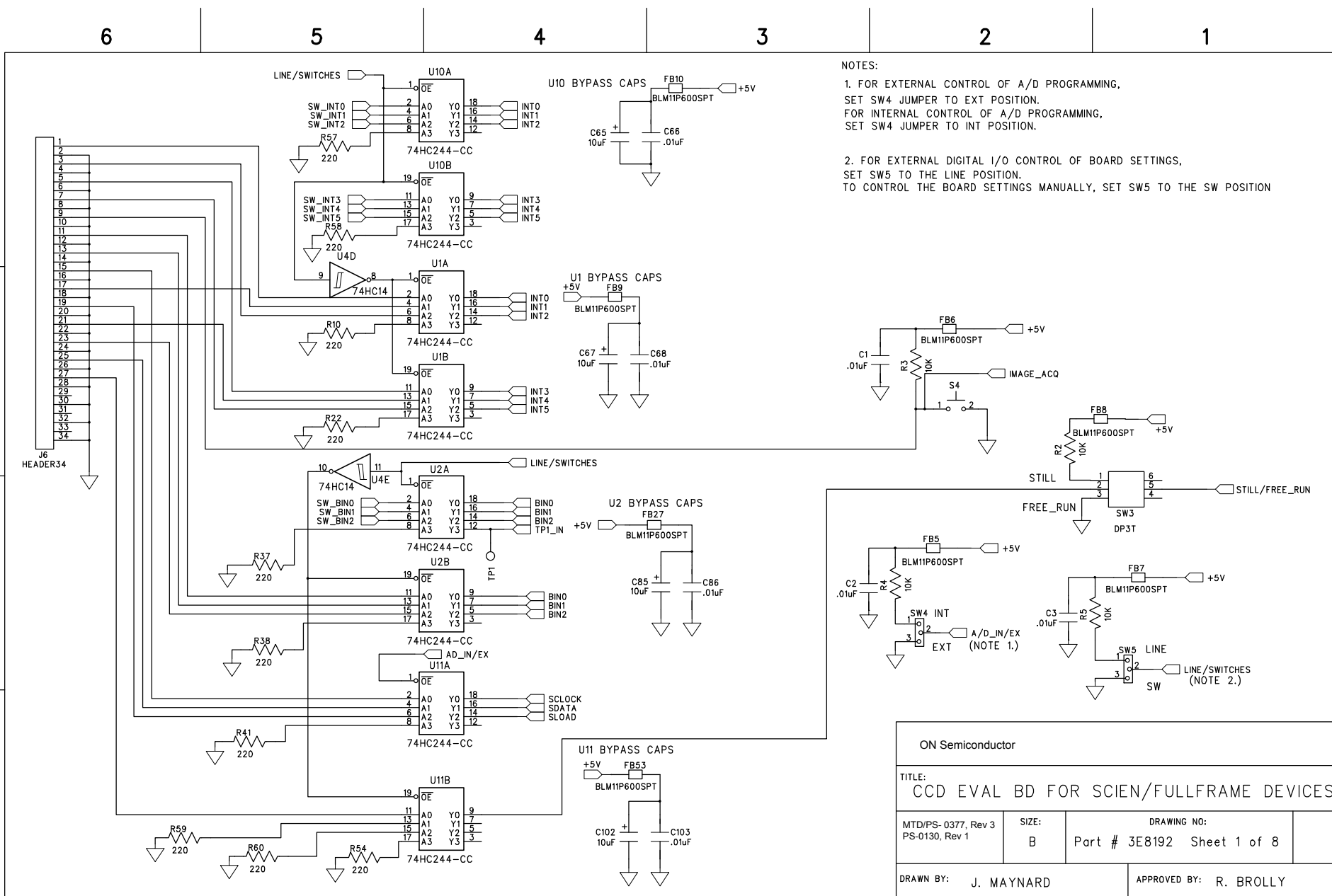
A

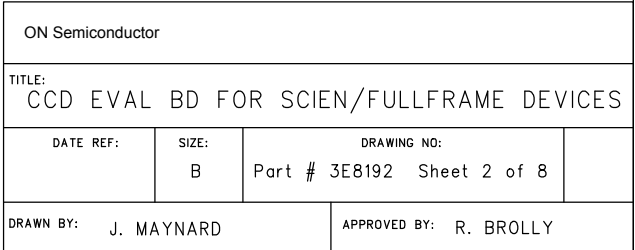
D

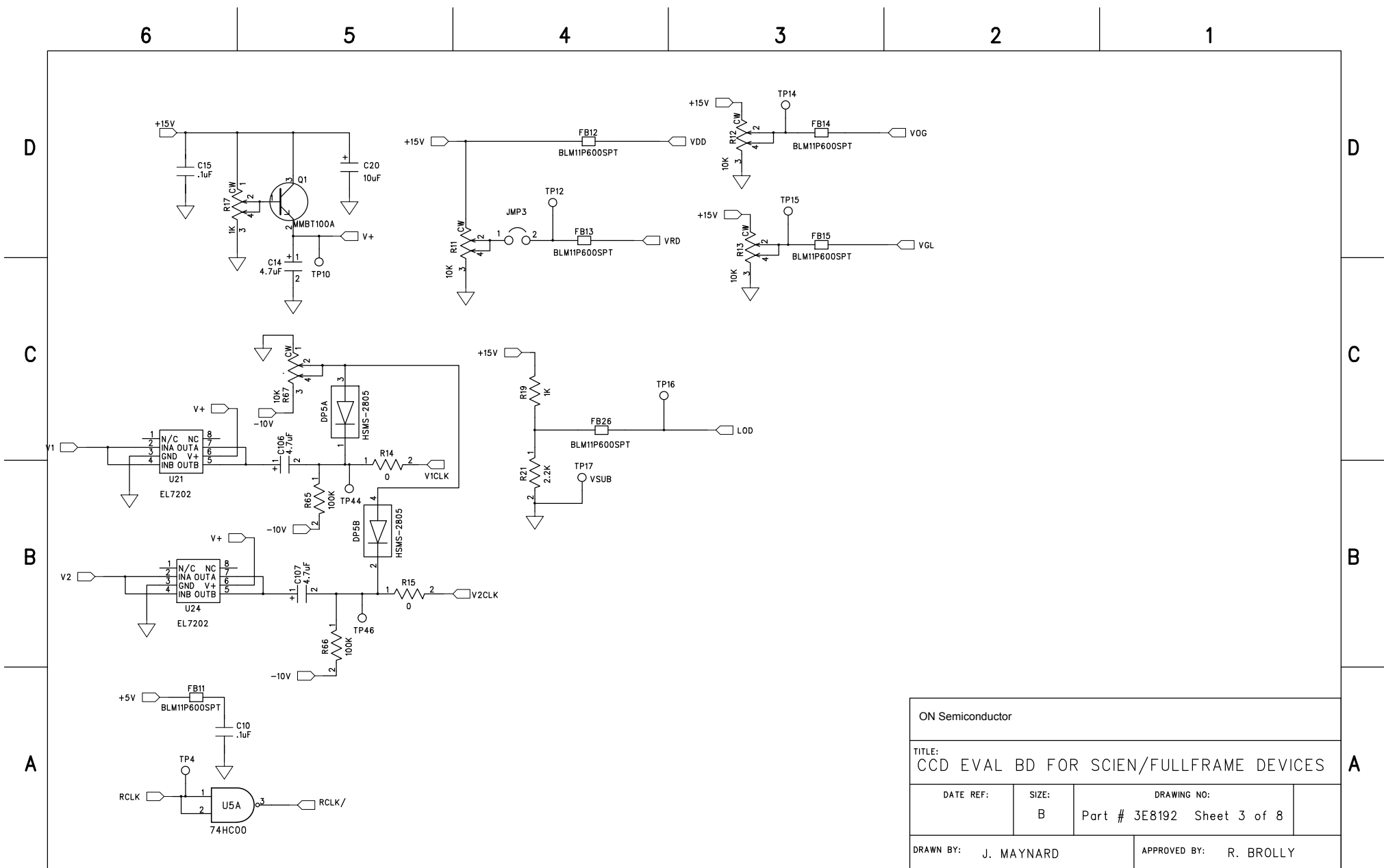
C

B

A







6

5

4

3

2

1

D

C

B

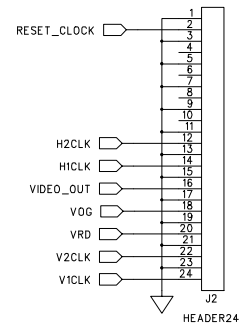
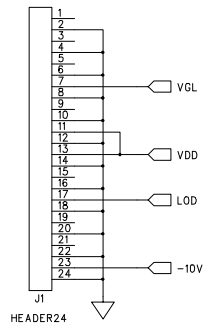
A

D

C

B

A



ON Semiconductor

TITLE:  
CCD EVAL BD FOR SCIEN/FULLFRAME DEVICES

DATE REF:	SIZE:	DRAWING NO:
	B	Part # 3E8192 Sheet 4 of 8

DRAWN BY: J. MAYNARD

APPROVED BY: R. BROLLY

6

5

4

3

2

1

D

D

C

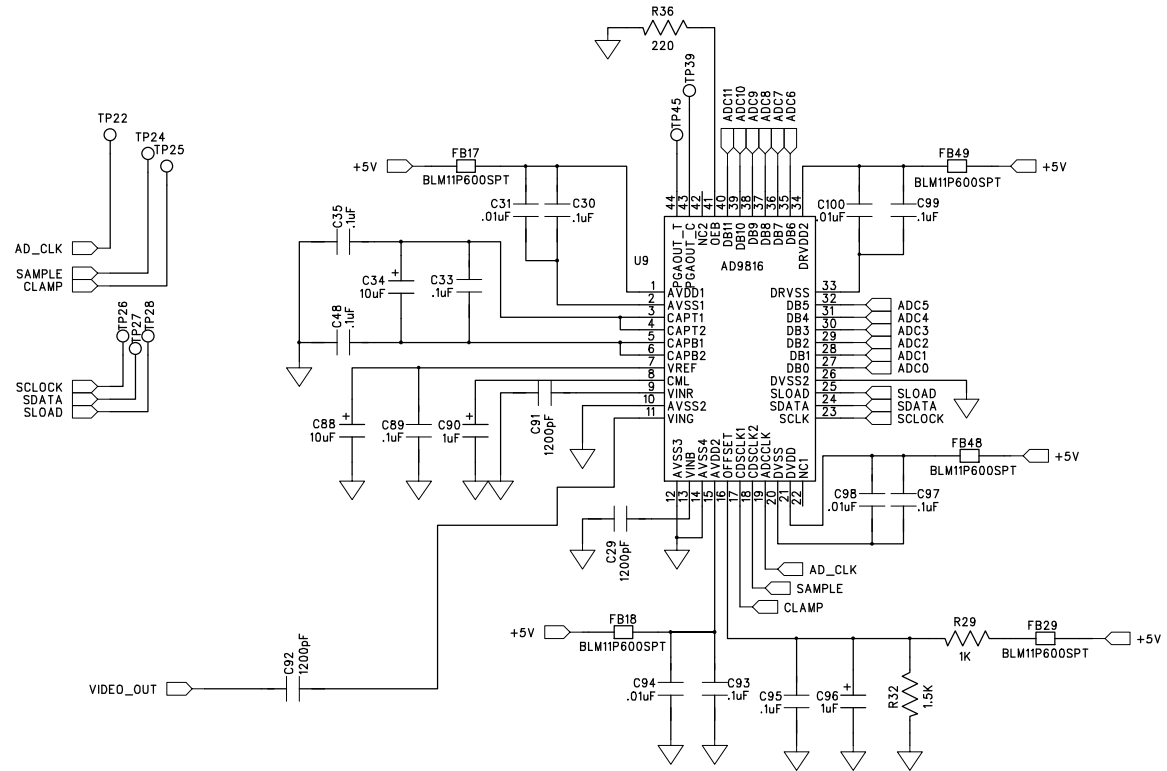
C

B

B

A

A



ON Semiconductor

TITLE:  
CCD EVAL BD FOR SCIEN/FULLFRAME DEVICES

DATE REF:

SIZE:  
B

DRAWING NO:

Part # 3E8192 Sheet 5 of 8

DRAWN BY: J. MAYNARD

APPROVED BY: R BROLLY

6

5

4

3

2

1

D

C

B

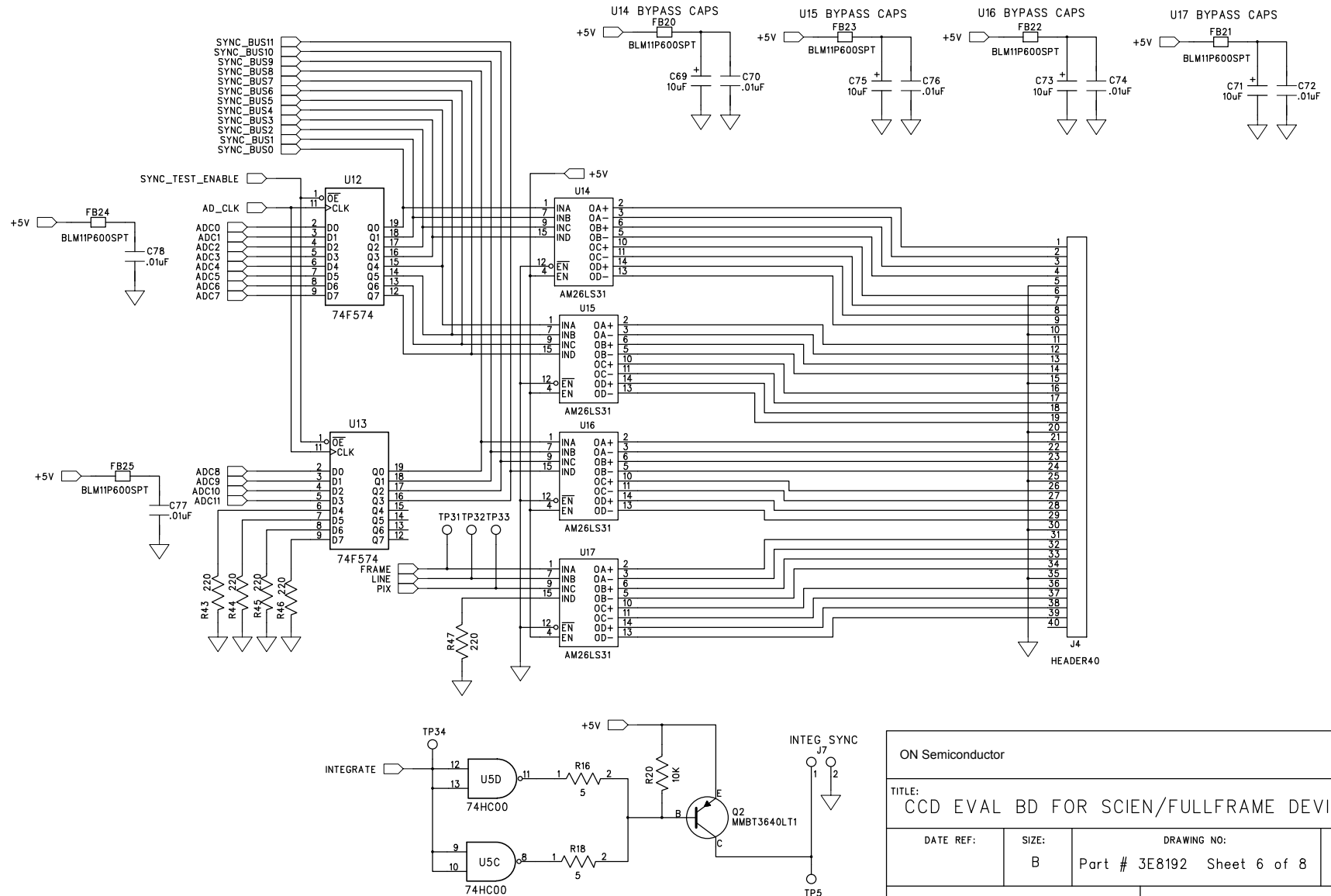
A

D

C

B

A



ON Semiconductor			
TITLE: CCD EVAL BD FOR SCIEN/FULLFRAME DEVICES			
DATE REF:	SIZE: B	DRAWING NO: Part # 3E8192 Sheet 6 of 8	
DRAWN BY: J. MAYNARD		APPROVED BY: R. BROLLY	

6

5

4

3

2

1

D

C

B

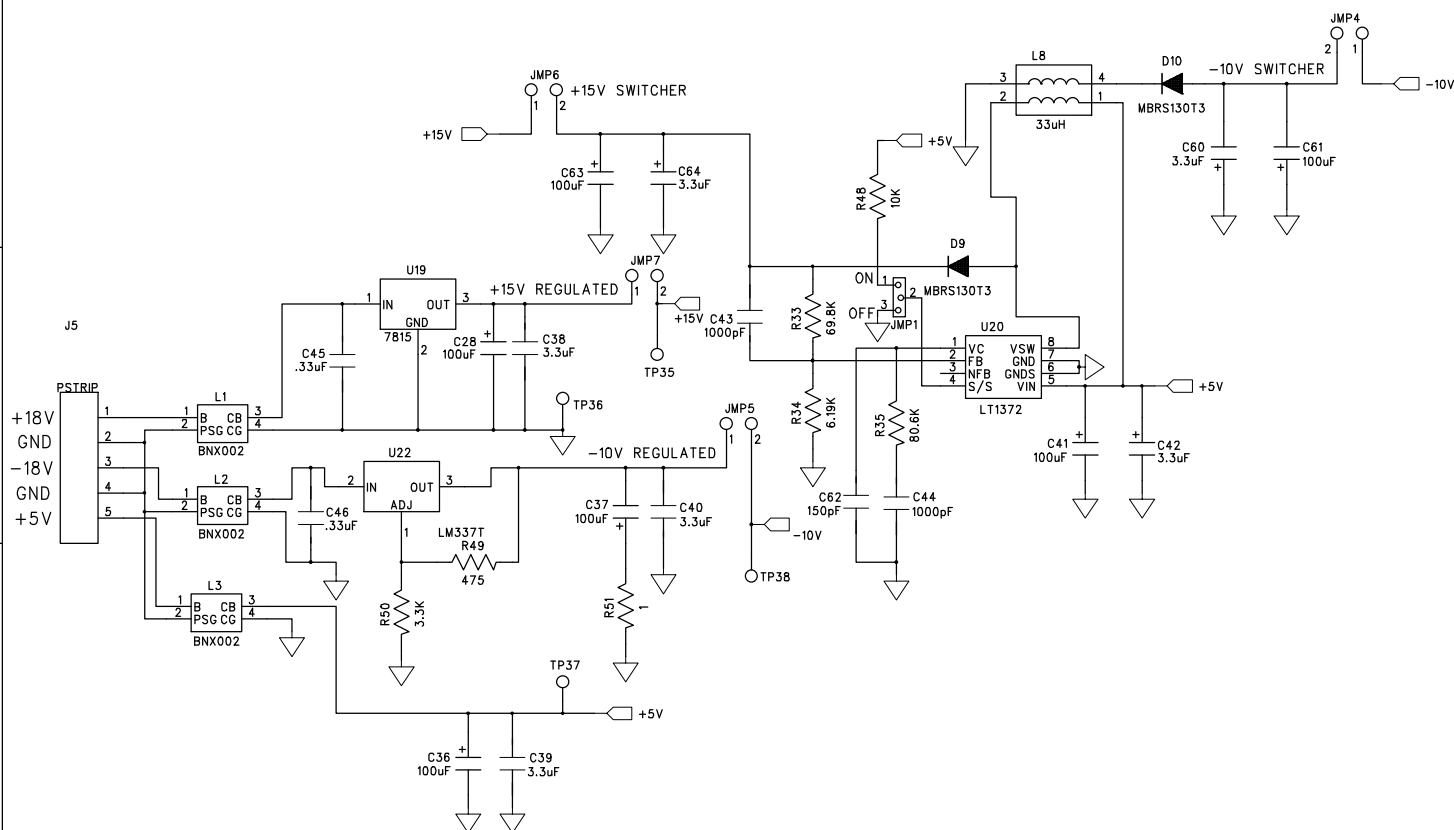
A

D

C

B

A



## NOTES:

1. TO UTILIZE SWITCHING POWER SUPPLY, U20, SET JMP1 TO ON POSITION. INSTALL JMP 4 AND JMP 6 . REMOVE JMP 5 AND JMP 7.
2. WHEN UTILIZING 3 EXTERNAL SUPPLIES, SET JMP 1 TO OFF POSITION, REMOVE JMP 4 AND JMP 6. INSTALL JMP 5 AND JMP 7.

ON Semiconductor

TITLE:  
CCD EVAL BD FOR SCIEN/FULLFRAME DEVICES

DATE REF:

SIZE:

DRAWING NO:

B

Part # 3E8192 Sheet 7 of 8

DRAWN BY: J. MAYNARD

APPROVED BY: R. BROLLY

6

5

4

3

2

1

D

C

B

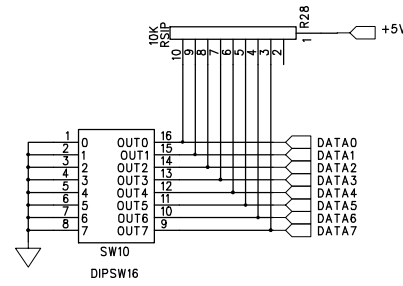
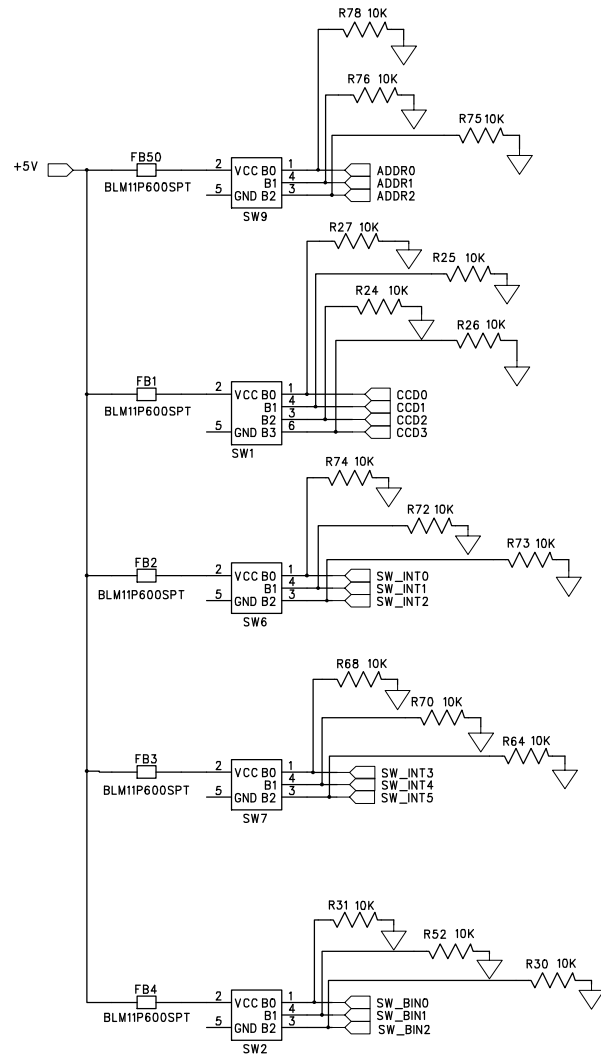
A

D

C

B

A



ON Semiconductor

TITLE:  
CCD EVAL BD FOR SCIEN/FULLFRAME DEVICES

DATE REF:

SIZE:

B

DRAWING NO:

Part # 3E8192 Sheet 8 of 8

DRAWN BY: J. MAYNARD

APPROVED BY: R. BROLLY

## PARTS LIST REV1

6/18/2002

## PART NUMBER

3E8192

## FULL FRAME TIMING BOARD

<u>PART</u>	<u>Kodak No.</u>	<u>DESCRIPTION</u>	<u>PACKAGE</u>	<u>QTY</u>	<u>BOARD REFERENCE #</u>	<u>MANUFACTURER</u>
2H8968				1	Printed Circuit Board	PCB
BLM11P600SPT	6C4490	FERRITE	FERRITE 0603	51	FB1-15,FB17-18, FB20-53	MURATA ERIE
06035A151JAT2A	4B3747	150pF 50VDC	CAP 0603	1	C62	AVX
06035C102KAT4A	8B0877	1000pF 50VDC	CAP 0603	3	C9,C43-44	AVX
08055A122KATMA	7B8540	1200pF 50VDC	CAP 0805	3	C29,C91-92	AVX
06035C103KAT4A	4B3745	.01uF 50VDC	CAP 0603	36	C1-4,C7,C31-32,C49-59,C66,C68,C70,C72,C74,C76-78,C80-83,C86 C94,C98,C100, C101,C103	AVX
0603YC104MAT4A	4B4011	.1uF 16V	CAP 0603	13	C8,C10,C15,C30,C33,C35,C48,C79,C89,C93, C95, C97,C99	AVX
12063E334MATMA	4B1412	0.33uF 25VDC	CAP 1206	2	C45-46	AVX
1206YC105MATRA	7B9655	1uF 16VDC	CAP 1206	2	C90,C96	AVX
1206YG335ZATSA	7B9446	3.3uF 16V	CAP 1206	6	C38-40,C42,C60,C64	AVX
TAJC475K035R	1C3731	4.7uF 35VDC	CAP C CASE	3	C14,C106-107	AVX
TMC-MC1D106MTR	258541	10 uF 20V	CAP C CASE	13	C5-6,C20,C34,C65,C67,C69,C71,C73,C75,C85,C88,C102	HITACHI
TPSE107M016S0125	7B9653	100uF 16VDC	CAP E CASE	6	C28,C36,C37,C41,C61,C63	AVX
MMBD914LT1	616293	DIODE	SOT-23	1	D1	MOTOROLA
MBRS130T3	917848	DIODE	SMB	2	D9-10	MOTOROLA
HSMS-2805	902510	DIODE	SOT-143	1	DP5	HEWLETT-PACKARD
MMBT100A	273733	TRANSISTOR	SOT-23	1	Q1	FAIRCHILD
MMBT3640LT1	236307	TRANSISTOR	SOT-23	1	Q2	MOTOROLA
		0 OHM	RES 0603	2	R14-15	
RK73H2AT1R0F	6C5004	1 OHM 1%	RES 0805	1	R51	KOA SPEER
CRCW0805-5R1-JT		5.1 OHM 5%	RES 0805	2	R16,R18	DALE
CRCW0603-221-JT		220 OHM 5%	RES 0603	16	R10,R22,R36-38,R41,R43-47,R54,R57-60	DALE
CRCW0603-4750-FT		475 OHM 1%	RES 0603	1	R49	DALE
CRCW0603-102-JT		1K OHM 5%	RES 0603	5	R7-9,R19,R29	DALE
3266W-1-102		1K POT	THRU-HOLE	1	R17	BOURNS
CRCW0603-1501-FT		1.5K OHM 1%	RES 0603	1	R32	DALE
CRCW0603-222-JT		2.2K OHM 5%	RES 0603	1	R21	DALE
CRCW0603-332-JT		3.3K OHM 5%	RES 0603	1	R50	DALE
CRCW0603-6191-FT		6.19K OHM 1%	RES 0603	1	R34	DALE
CRCW0603-1002-FT		10K OHM 1%	RES 0603	25	R1-5,R20,R24-27,R30-31,R48,R52,R61-62,R64,R68,R70,R72-76,R78	DALE
4310R-101-103		10K SIP	10 POS THRU	1	R28	DALE
3266W-1-103		10K POT	THRU-HOLE	5	R11-13,R67,R6	BOURNS
CRCW0603-6982-FT		69.8K OHM 1%	RES 0603	1	R33	DALE
CRCW0603-8062-FT		80.6K OHM 1%	RES 0603	1	R35	DALE

CRCW0603-1003-FT	100K OHM 1%	RES 0603	2	R65-66	DALE
SN74HC244DW	OCTAL BUFF	SOL-20	4	U1-2, U10-11	TEXAS INSTRUMENTS
SN74HC14D	HEX INV	S0-14	1	U4	TEXAS INSTRUMENTS
SN74HC00D	NAND GATES	S0-14	1	U5	TEXAS INSTRUMENTS
SN74F574DW	DFF'S	SOL-20	2	U12-13	TEXAS INSTRUMENTS
AM26LS31CD	RS422 DRIVER	S0-16	4	U14-17	TEXAS INSTRUMENTS
LM7815CT	15V REG	TO-220	1	U19	NATIONAL
LM337T	NEG REG	TO-220	1	U22	NATIONAL
LT1372CS8		S0-8	1	U20	LINEAR TECHNOLOGY
EL7202CS	DRIVER	S0IC-8	2	U21,U24	ELANTEC
EPM7160STC100-10	2E4683	EPLD	100 PIN TQFP	U3, U18	ALTERA
AD9816JS	A/D	QFP-44	1	U9	ANALOG DEVICES
C01100-40.000MHZ	CLOCK	14 PIN DIP	1	OSC1	Raltron
0555-015012027100	SINGLE PINS	THRU HOLE	4	OSC1 SOCKET PINS	MILL MAX
CTX33-3	INDUCTOR	SMT	1	L8	COILTRONICS
BNX002-01	PI FILTER	THRU-HOLE	3	L1-3	MURATA ERIE
BP08KT	8 POS DIP	THRU-HOLE	1	SW10	C&K
TPA11CGPC0	SWITCH	SPST	2	S4, SW8	AUGAT
94HCB16	HEX SWITCH	HEX SW	1	SW1	GRAYHILL
94HCB08	OCTAL SWITCH	OCTAL SW	4	SW2,SW6-7,SW9	GRAYHILL
1101M2S3CBE2	SWITCH	on-none-on	1	SW12	C&K
1103M2S3CBE2	SWITCH	on-off-on	1	SW3	C&K
947701-01	SWITCH KNOB	KNOB	5		GRAYHILL
SL90-5 (123506)	BOARD MOUNT	5 PIN PWR	1	J5	WEIDMULLER
BL5 (125946)	PLUG CONNECTOR	5 PIN PWR	1		WEIDMULLER
5-826632-0	BREAKAWAY STRIP	HEADER 40	1	J4	AMP
636-4041	40 PIN CONNECTOR	FEMALE	1		T&B
5-826632-0	BREAKAWAY STRIP	HEADER 34	1	J6	AMP
636-3441	34 PIN CONNECTOR	FEMALE	1		T&B
5-826632-0	BREAKAWAY STRIP	HEADER 24	2	J1,J2	AMP
5-826632-0	BREAKAWAY STRIP	HEADER 10	1	J8	AMP
5-826632-0	BREAKAWAY STRIP	HEADER 2	1	J7	AMP
5-826632-0	BREAKAWAY STRIP	JUMPER	9	JMP1,JMP3-7,SW4-5,SW11	AMP
5-826926-0	BREAKAWAY STRIP	TEST POINT	27	TP1,TP4-5,TP10,TP12,TP14-17,TP22,TP24-28,TP31-39,TP44-46	AMP