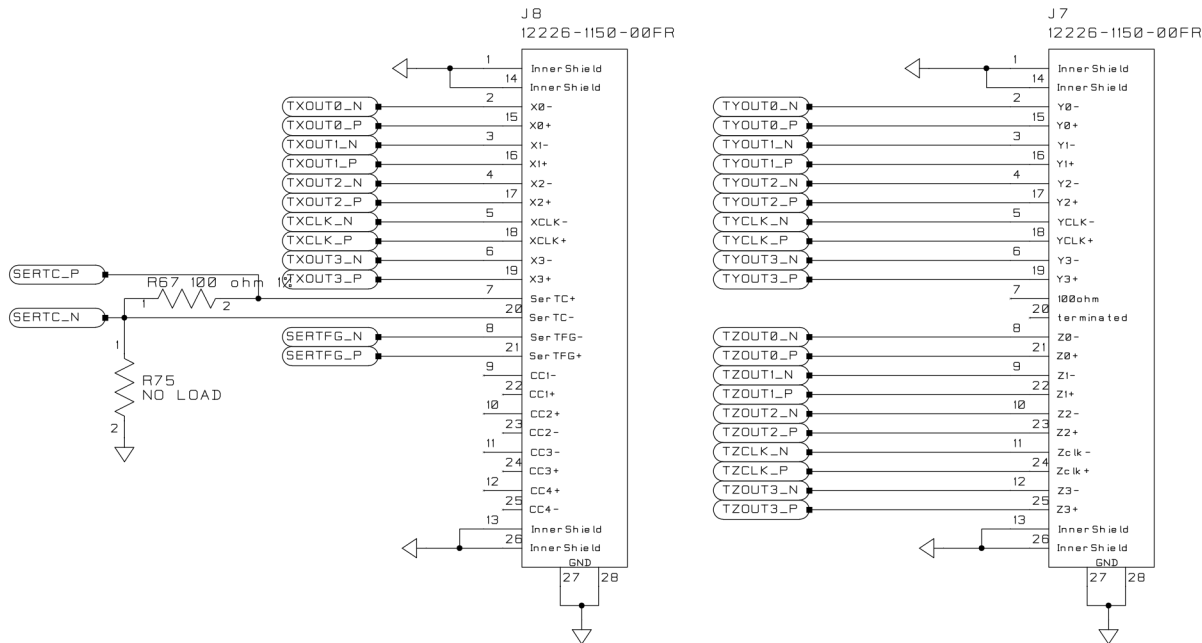


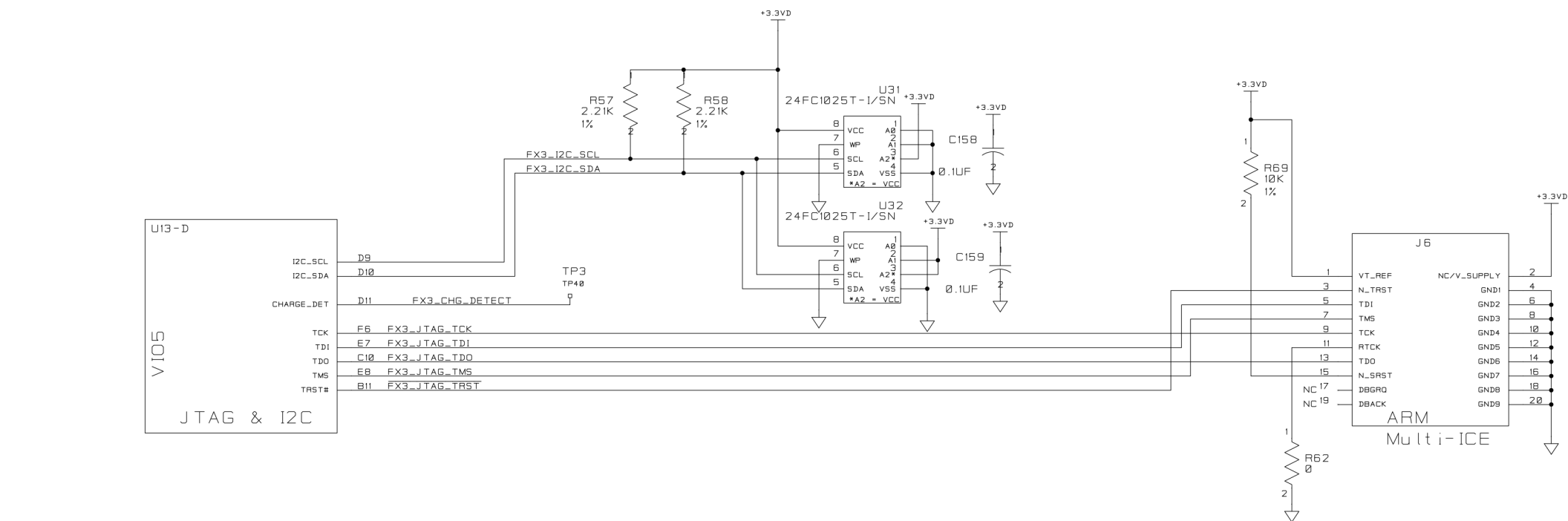
REVISIONS				
ZONE	SYM	DESCRIPTION	DATE	APPROVAL



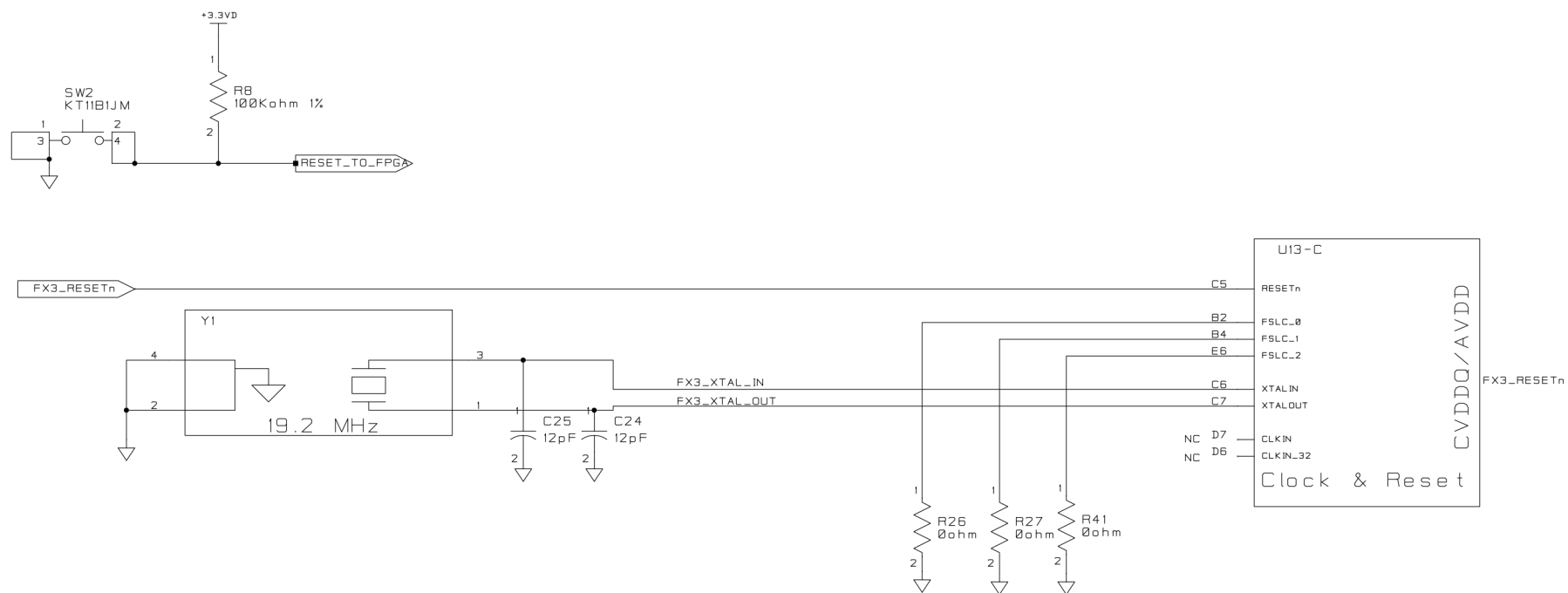
KAC-XXXXX Low Speed Evaluation Bare Board
30000402

KAC-XXXXX Low Speed Evaluation Compltd Assy Board
30000403

				UNLESS OTHERWISE SPECIFIED	MATERIAL	DIMENSIONS APPLY AFTER FINISH WHERE TOTAL TOLERANCE IS .001 INCHES OR LESS AND ON ALL THREADS IN ALL OTHER PLACES DIMENSIONS APPLY BEFORE FINISH.	ON Semiconductor	
				DIM. ARE IN	FINISH	DR		
				2 PL DEC TOL ±		QA CHK		
				3 PL DEC TOL ±		ENGR		
				ANGULAR TOL ±		ENGR		
				SURF. ROUGHNESS	DEVIATIONS FROM INTENDED SHAPE FLATNESS, ROUNDNESS, SQUARENESS ETC.) MUST BE WITHIN STATED DIMENSIONAL TOLERANCES.	ECN NO.	SIZE D	DWG NO.
				EDGES		REL. DATE	SCALE	PROGRAM CADSTAR
				INSIDE RADI				SHEET 10 of 17
NEXT ASSY	USED ON	NEXT ASSY	FINAL ASSY	APPLICATION	QUANTITY REQD			



REVISIONS				
ZONE	SYM	DESCRIPTION	DATE	APPROVAL

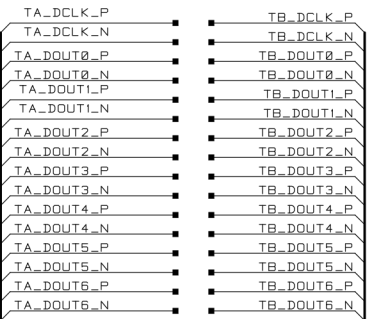
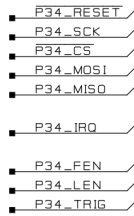
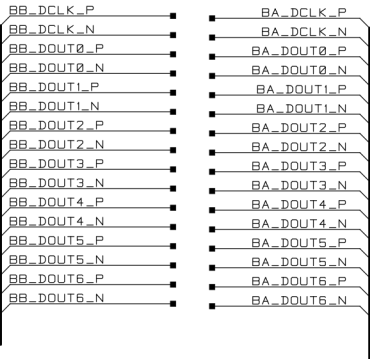
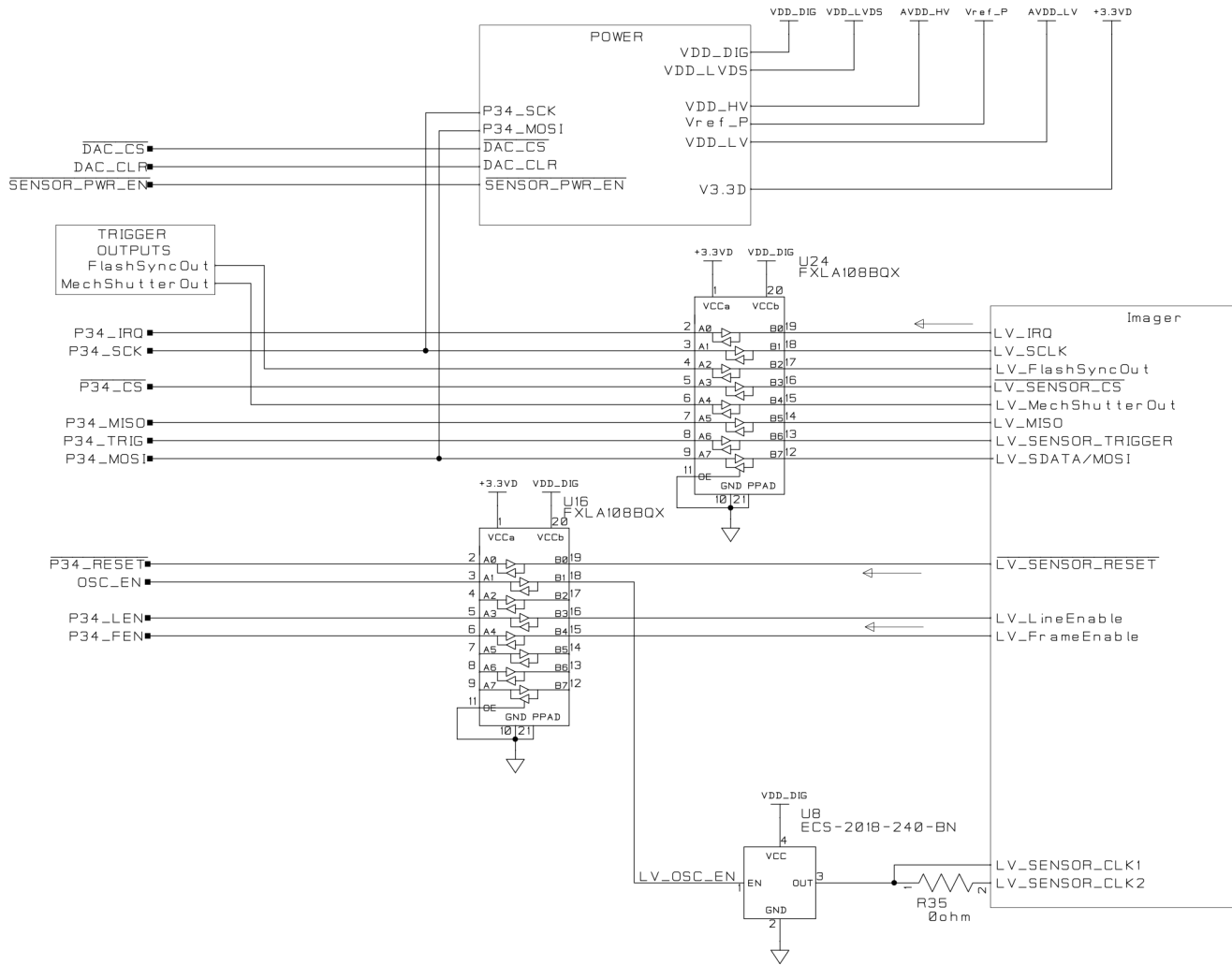


KAC-XXXXX Low Speed Evaluation Bare Board
30000402

KAC-XXXXX Low Speed Evaluation Compltd Assy Board
30000403

				UNLESS OTHERWISE SPECIFIED	MATERIAL	DIMENSIONS APPLY AFTER FINISH WHERE TOTAL TOLERANCE 0S .001 INCHES OR LESS AND ON ALL THREADS IN ALL OTHER PLACES DIMENSIONS APPLY BEFORE FINISH.			ON Semiconductor		
				DIM. ARE IN			NAME				
				2 PL DEC TOL ±	FINISH	DR			KAC-XXXXX Low Speed Eval Kit ASSEM 3000403 REV2		
				3 PL DEC TOL ±		QA CHK					
				ANGULAR TOL ±		ENGR					
				SURF. ROUGHNESS		ENGR					
				EDGES	DEVIATIONS FROM INTENDED SHAPE FLATNESS, ROUNDNESS, SQUARENESS ETC. MUST BE WITHIN STATED DIMENSIONAL TOLERANCES.	ECN NO.			SIZE	DWG NO.	
				INSIDE RADII		REL DATE			D		
NEXT ASSY		USED ON		NEXT ASSY	FINAL ASSY						
APPLICATION				QUANTITY REQD							

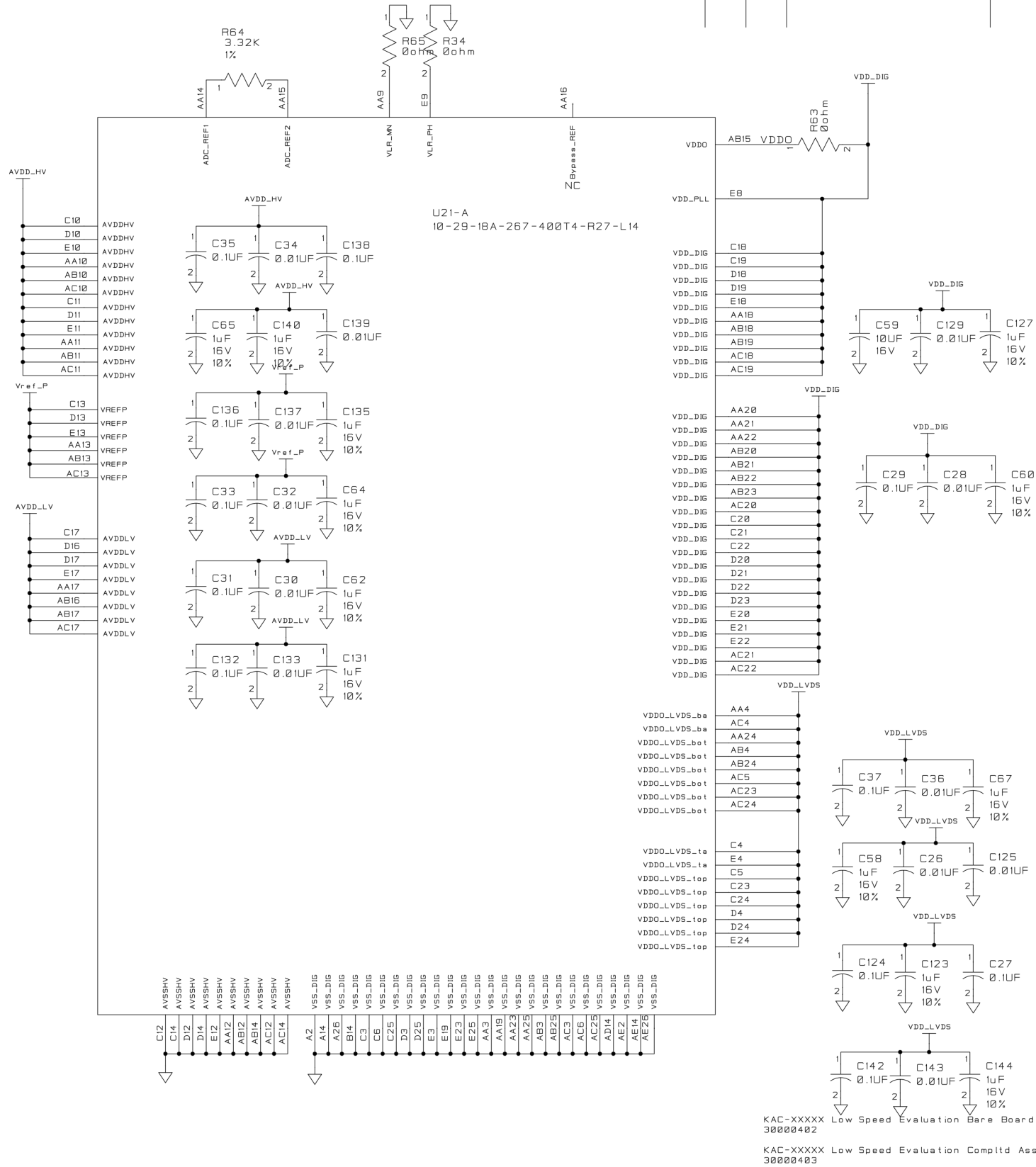
REVISIONS				
ZONE	SYM	DESCRIPTION	DATE	APPROVAL



KAC-XXXXX Low Speed Evaluation Bare Board
30000402
KAC-XXXXX Low Speed Evaluation Compltd Assy Board
30000403

				UNLESS OTHERWISE SPECIFIED	MATERIAL	DIMENSIONS APPLY AFTER FINISH WHERE TOTAL TOLERANCE IS .001 INCHES OR LESS AND ON ALL THREADS. IN ALL OTHER PLACES DIMENSIONS APPLY BEFORE FINISH.	ON Semiconductor	
				DIM. ARE IN			NAME	KAC-XXXXX
				2 PL DEC TOL ±			DR	Low Speed Eval Kit
				3 PL DEC TOL ±			QA CHK	ASSEM 30000403 REV2
				ANGULAR TOL ±			ENGR	
				SURF. ROUGHNESS			ENGR	
				EDGES			ECN NO.	
				INSIDE RADI			REL. DATE	
NEXT ASSY	USED ON	NEXT ASSY	FINAL ASSY		DEVIATIONS FROM INTENDED SHAPE FLATNESS, ROUNDNESS, SQUARENESS ETC.) MUST BE WITHIN STATED DIMENSIONAL TOLERANCES.		SIZE D	DWG. NO.
APPLICATION		QUANTITY REQD					SCALE	PROGRAM CADSTAR
								SHEET 14 of 17

REVISIONS				
ZONE	SYM	DESCRIPTION	DATE	APPROVAL



LV_IRQ
LV_SCLK
LV_SENSOR_CS
LV_SDATA/MOSI
LV_MISO
LV_SENSOR_TRIGGER
LV_SENSOR_RESET

LV_SENSOR_CLK1
LV_SENSOR_CLK2

LV_FlashSyncOut
LV_MechShutterOut
LV_LineEnable
LV_FrameEnable

BA_DCLK_P AA1
BA_DCLK_N AA2
BA_DOUT0_P AB1
BA_DOUT0_N AB2
BA_DOUT1_P AC1
BA_DOUT1_N AC2
BA_DOUT2_P AD1
BA_DOUT2_N AD2
BA_DOUT3_P AE3
BA_DOUT3_N AD3
BA_DOUT4_P AE4
BA_DOUT4_N AD4
BA_DOUT5_P AE5
BA_DOUT5_N AD5
BA_DOUT6_P AE6
BA_DOUT6_N AD6

BB_DCLK_P AC7
BB_DCLK_N AC8
BB_DOUT0_P AE7
BB_DOUT0_N AD7
BB_DOUT1_P AE8
BB_DOUT1_N AD8
BB_DOUT2_P AE9
BB_DOUT2_N AD9
BB_DOUT3_P AE10
BB_DOUT3_N AD10
BB_DOUT4_P AE11
BB_DOUT4_N AD11
BB_DOUT5_P AE12
BB_DOUT5_N AD12
BB_DOUT6_P AE13
BB_DOUT6_N AD13

AC15 DCLK+_bc
AC16 DCLK-_bc
AE15 DATA0+_bc
AD15 DATA0-_bc
AE16 DATA1+_bc
AD16 DATA1-_bc
AE17 DATA2+_bc
AD17 DATA2-_bc
AE18 DATA3+_bc
AD18 DATA3-_bc
AE19 DATA4+_bc
AD19 DATA4-_bc
AE20 DATA5+_bc
AD20 DATA5-_bc
AE21 DATA6+_bc
AD21 DATA6-_bc

AE22 DCLK+_bd
AD22 DCLK-_bd
AE23 DATA0+_bd
AD23 DATA0-_bd
AE24 DATA1+_bd
AD24 DATA1-_bd
AE25 DATA2+_bd
AD25 DATA2-_bd
AE26 DATA3+_bd
AD26 DATA3-_bd
AE27 DATA4+_bd
AD27 DATA4-_bd
AE28 DATA5+_bd
AD28 DATA5-_bd
AE29 DATA6+_bd
AD29 DATA6-_bd

VCAL2
VCAL1
TEST2
TEST1
R33 0ohm
R31 0ohm
R30 0ohm
R29 0ohm
R28 0ohm
R27 0ohm
R26 0ohm
R25 0ohm
R24 0ohm
R23 0ohm
R22 0ohm
R21 0ohm
R20 0ohm
R19 0ohm
R18 0ohm
R17 0ohm
R16 0ohm
R15 0ohm
R14 0ohm
R13 0ohm
R12 0ohm
R11 0ohm
R10 0ohm
R9 0ohm
R8 0ohm
R7 0ohm
R6 0ohm
R5 0ohm
R4 0ohm
R3 0ohm
R2 0ohm
R1 0ohm
R0 0ohm

E1 TA_DCLK_P
E2 TA_DCLK_N
D1 TA_DOUT0_P
D2 TA_DOUT0_N
C1 TA_DOUT1_P
C2 TA_DOUT1_N
B1 TA_DOUT2_P
B2 TA_DOUT2_N
A3 TA_DOUT3_P
A4 TA_DOUT3_N
A5 TA_DOUT4_P
A6 TA_DOUT4_N
A7 TA_DOUT5_P
A8 TA_DOUT5_N
A9 TA_DOUT6_P
A10 TA_DOUT6_N

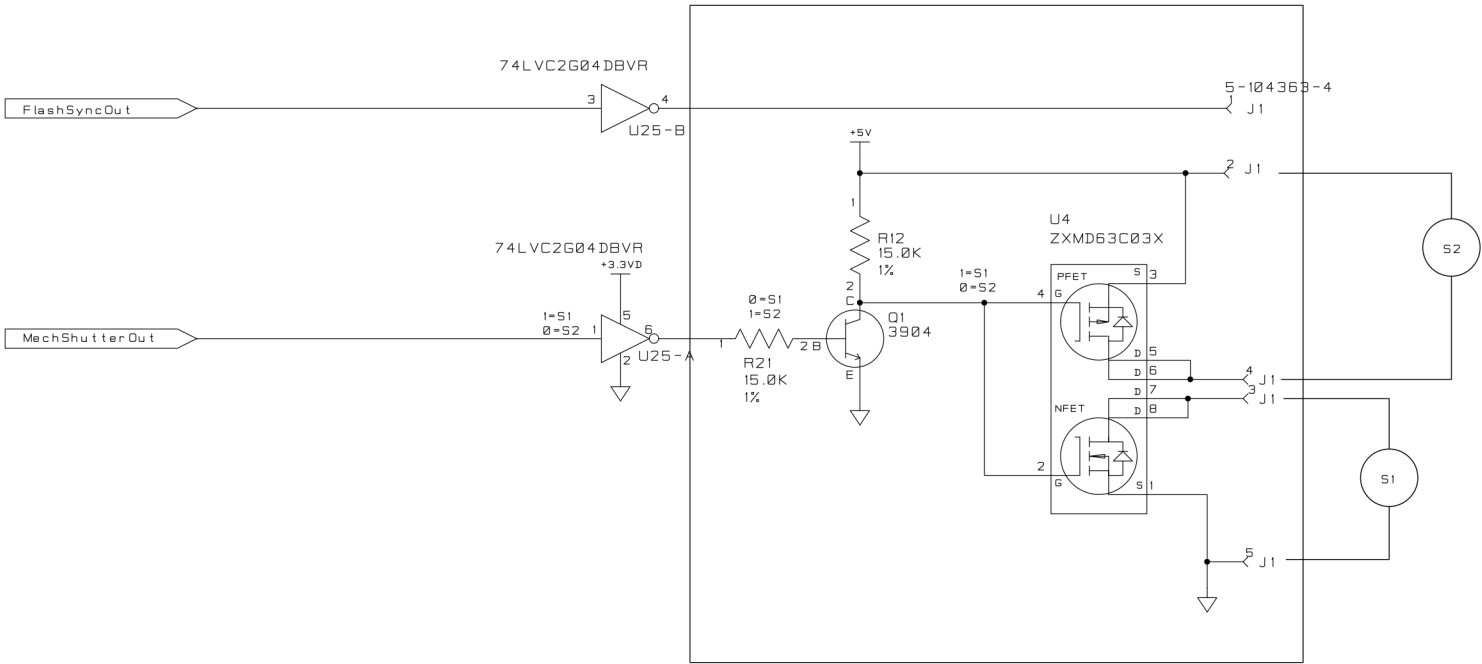
C7 TB_DCLK_P
C8 TB_DCLK_N
A7 TB_DOUT0_P
B7 TB_DOUT0_N
A8 TB_DOUT1_P
B8 TB_DOUT1_N
A9 TB_DOUT2_P
B9 TB_DOUT2_N
A10 TB_DOUT3_P
B10 TB_DOUT3_N
A11 TB_DOUT4_P
B11 TB_DOUT4_N
A12 TB_DOUT5_P
B12 TB_DOUT5_N
A13 TB_DOUT6_P
B13 TB_DOUT6_N

C15 DCLK+_tc
C16 DCLK-_tc
A15 DATA0+_tc
B15 DATA0-_tc
A16 DATA1+_tc
B16 DATA1-_tc
A17 DATA2+_tc
B17 DATA2-_tc
A18 DATA3+_tc
B18 DATA3-_tc
A19 DATA4+_tc
B19 DATA4-_tc
A20 DATA5+_tc
B20 DATA5-_tc
A21 DATA6+_tc
B21 DATA6-_tc

A22 DCLK+_td
B22 DCLK-_td
A23 DATA0+_td
B23 DATA0-_td
A24 DATA1+_td
B24 DATA1-_td
A25 DATA2+_td
B25 DATA2-_td
A26 DATA3+_td
B26 DATA3-_td
A27 DATA4+_td
B27 DATA4-_td
A28 DATA5+_td
B28 DATA5-_td
A29 DATA6+_td
B29 DATA6-_td

					UNLESS OTHERWISE SPECIFIED	MATERIAL	DIMENSIONS APPLY AFTER FINISH WHERE TOTAL TOLERANCE 05.001 INCHES OR LESS AND ON ALL THREADS. IN ALL OTHER PLACES DIMENSIONS APPLY BEFORE FINISH.			ON Semiconductor			
					DIM. ARE IN		FINISH	NAME			KAC-XXXXX		
					2 PL DEC TOL ±			DR			Low Speed Eval Kit		
					3 PL DEC TOL ±			QA CHK			ASSEM 3000403 REV2		
					ANGULAR TOL ±			ENGR					
					SURF. ROUGHNESS			ENGR					
					EDGES			ECN NO.					
					INSIDE RADII			REL DATE					
					DEVIATIONS FROM INTENDED SHAPE FLATNESS, ROUNDNESS, SQUARENESS ETC.) MUST BE WITHIN STATED DIMENSIONAL TOLERANCES.			SIZE			DWG NO.		
								D					
NEXT ASSY		USED ON		NEXT ASSY	FINAL ASSY	SCALE			PROGRAM CADSTAR		SHEET 15 of 17		
APPLICATION				QUANTITY REQD									

REVISIONS				
ZONE	SYM	DESCRIPTION	DATE	APPROVAL



KAC-XXXX Low Speed Evaluation Bare Board
3000402

KAC-XXXX Low Speed Evaluation Compltd Assy Board
3000403

				UNLESS OTHERWISE SPECIFIED	MATERIAL	DIMENSIONS APPLY AFTER FINISH WHERE TOTAL TOLERANCE IS .001 INCHES OR LESS AND ON ALL THREADS. IN ALL OTHER PLACES DIMENSIONS APPLY BEFORE FINISH.	ON Semiconductor	
				DIM. ARE IN	FINISH	DR		
				2 PL DEC TOL ±		QA CHK		
				3 PL DEC TOL ±		ENGR		
				ANGULAR TOL ±		ENGR		
				SURF. ROUGHNESS	✓	ECN NO.		
				EDGES		REL DATE		
				INSIDE RADIUS				
NEXT ASSY	USED ON	NEXT ASSY	FINAL ASSY				SIZE D	DWG NO.
APPLICATION		QUANTITY REQD					SCALE	PROGRAM CADSTAR SHEET 17 of 17

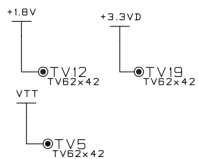
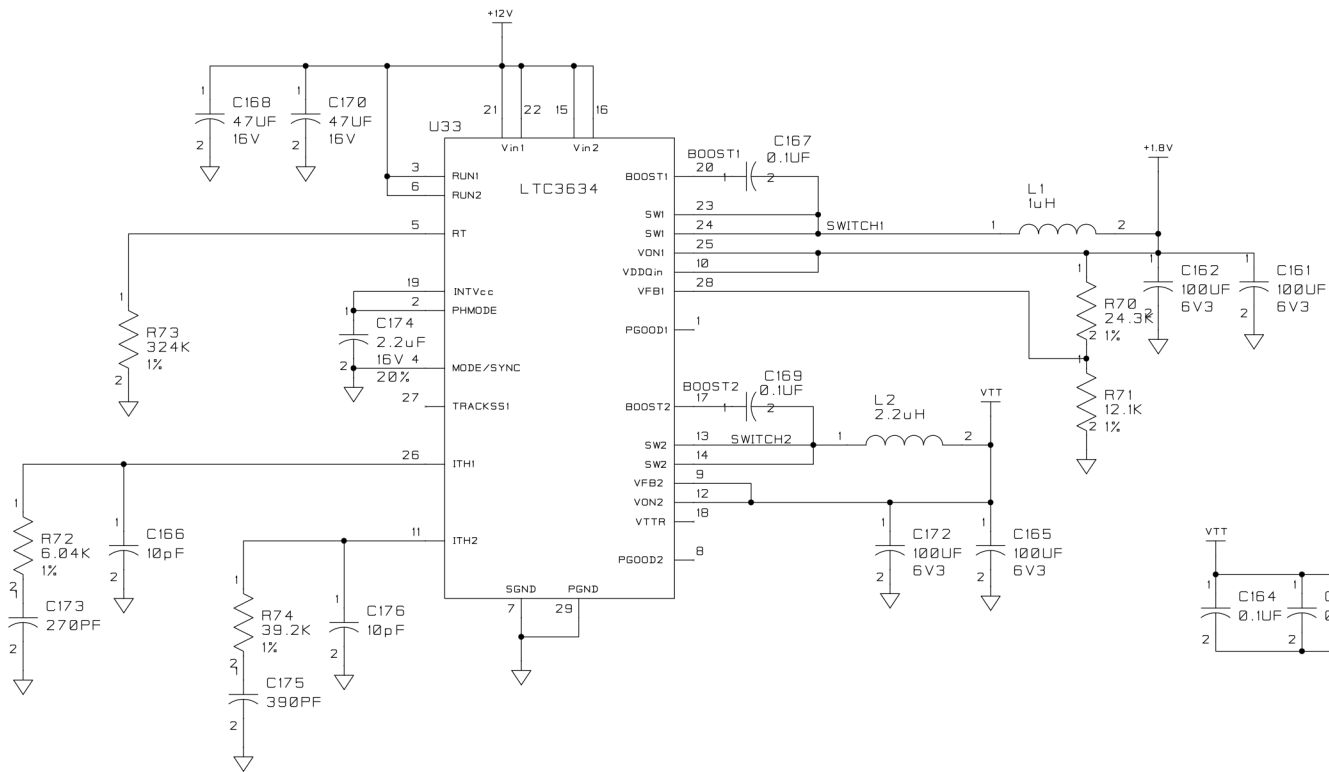
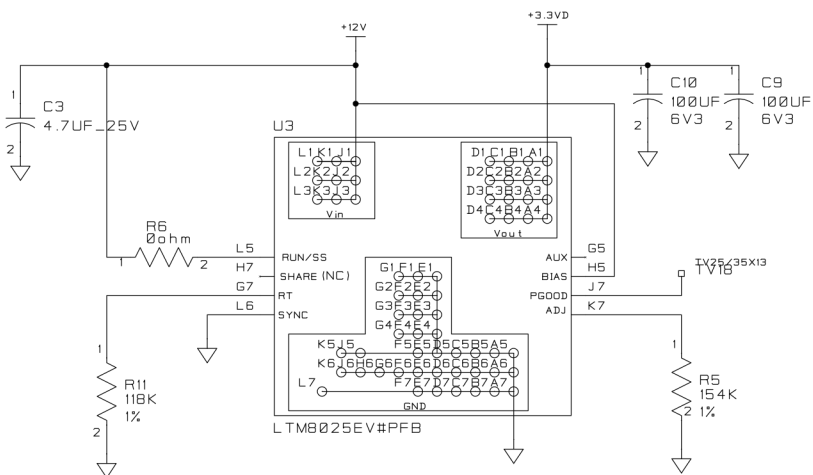
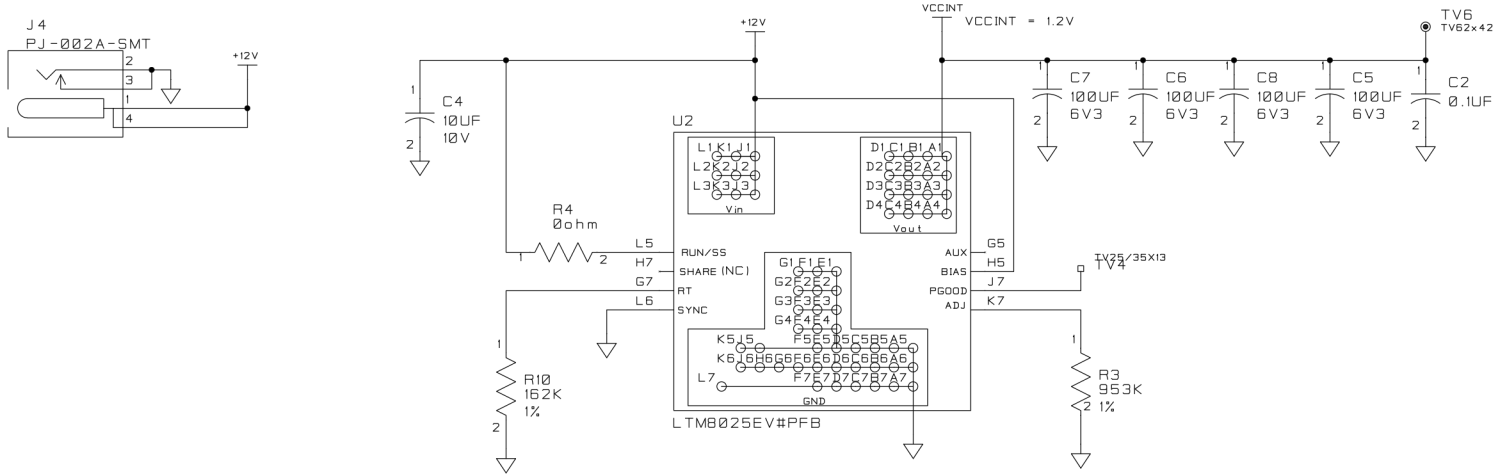
Monday

11-Nov 2013 12:15 PM

Part Name	DESCRIPTION	MFG Part#	Digikey Part#	MFG	PriceCT	PriceTR	Count	PCB_REF_NAME
MPZ2012S601A	EMI FILTER	FERRITE CHIP BEAD 600 OHM SMD	445-2206-1-ND	TDK	0	0	4	BD1 BD2 BD3 BD4
BLM21PG221SN1D	EMI FILTER	FERRITE CHIP 220 OHM 0805	409-1054-1-ND	Murata	0	0	2	BD5 BD6
C4.7UF_1210_25V20	CAP 4.7UF 25WVDC 20%	TMK325B7475KN-T	587-1373-1-ND	TAIYO YUDEN	0.66	0.22	1	C1
C100UF_1210_6V3	CAP Ceramic 100UF 6.3WVDC 20%	C1210C107M9PACTU	399-4697-1-ND	TAIYO YUDEN	1.23	0.81	12	C10 C11 C12 C161 C162 C165 C172 C5 C6 C7 C8 C9
C.1UF_0402	CAP 0.1UF 10% 16V X7R	C0402C104K9RACTU	399-4872-1-ND	Kemet	0.05	0.01	98	C100 C101 C102 C103 C104 C105 C106 C107 C108 C109 C110 C111 C112 C113 C114 C115 C116 C118 C124 C128 C13 C132 C136 C138 C142 C145 C146 C147 C148 C149 C15 C150 C151 C152 C153 C154 C155 C156 C157 C158 C159 C160 C164 C167 C169 C17 C171 C19 C2 C20 C21 C27 C29 C31 C33 C35 C37 C38 C39 C40 C41 C42 C43 C44 C45 C46 C48 C50 C51 C52 C54 C55 C68 C69 C70 C71 C72 C73 C74 C75 C76 C77 C78 C79 C80 C81 C82 C83 C85 C86 C88 C90 C92 C93 C96 C97 C98 C99
C1UF_0603_16V	CAP 1UF 16WVDC 10%	0603YC105KAT2A	478-5010-1-ND	AVX	0.37	0.08	15	C117 C119 C123 C127 C131 C135 C140 C144 C58 C60 C62 C64 C65 C67 C95 C120 C125 C129 C133 C137 C139 C143 C18 C26 C28 C30 C32 C34 C36 C47 C49 C84 C87 C89 C91
C.01UF_0402	CAP 0.01UF 10% 16V X7R	ECJ-0EB1C103K	PCC103BQCT-ND	Panasonic	0.019	0.006	21	C94
C.1UF_0603_25V	CAP .1UF 25WVDC +10%	C0603C104K3RACTU	399-1281-1-ND	Kemet	0.05	0.009	1	C121
C10UF_0805_16V_80	CAP 10UF 16WVDC 80%	GRM21BF51C106ZE15L	490-3347-1-ND	Murata	0.34	0.05	12	C122 C126 C130 C134 C14 C141 C23 C57 C59 C61 C63 C66
PC220UF10V10	CAP 220UF 10 WVDC 10%	TPSE227K010R0100	478-1799-1-ND	AVX	0	0	2	C16 C163
C10PF_0603	CAP 10PF 50WVDC 10%	C0603C100D5GAC	399-7815-1-ND	KEMET	0	0	2	C166 C176
C47UF_1210_16V20	Ceramic CAP 47UF 16V 20% X5R	C1210C476M4PAC	399-5514-1-ND	KEMET	0	0	2	C168 C170
C270PF_0603	CAP 270PF 50WVDC 5%	C0603C271K5RAC	399-1072-1-ND	KEMET	0	0	1	C173
C2.2UF_0805_16V	CAP 2.2UF 16WVDC 20% Y5V	GRM21BF51C225ZA01	490-1741-1-ND	Panasonic	0.07	0.02	1	C174
C390PF_0603	CAP 390PF 50WVDC 5%	C0603C391J5GACTU	399-1069-1-ND	KEMET	0.14	0.02	1	C175
C2.2UF_0603_10V	CAP 2.2UF 16WVDC 20% Y5V	C1608X5R1A225K080AC	445-5166-1-ND	TDK	0.17	0.03	3	C22 C53 C56
C12PF_0603_50V	CAP 12PF 50VDC 10%	C0603C120J5GACTU	399-1050-1-ND	KEMET	0.09	0.02	2	C24 C25
C4.7UF_0805_25V20	CERCAP 4.7UF 25WVDC 20% X5R	GRM21BR61E475MA12L	490-5422-2-ND	Panasonic	0.37	0.05	1	C3
C10UF_1210_10V20	CAP 10UF 10WVDC 20%	LMK325BJ106MN	587-1469-1-ND	TAIYO YUDEN	0.99	0.23	1	C4
HSMF-C155	LED BI-CLR SURF MT	HSMF-C155	516-1456-1-ND	HP	0.49	0.16	1	DS1
104363-4	5 POS SHROUDED MTE HDR ASS	5-104363-4	A33929-ND	AMP	0.95	0.47	1	J1
HDR_.100_2X5_SMT	HEADER ASSY 10 POS 2 ROW SMT	15916102	WM3699CT-ND	MOLEX	1.91	1.17	1	J10
FANCONN	3 POS RT MTA-100 HDR ASS	640453-3	A19340-ND	AMP			2	J2 J3
PJ-002A-SMT	JACK POWER 2.1mm	PJ-002A	CP-002APJCT-ND	CUI	0.7	0.25	1	J4
CONN_USB3.0_MICROB_RECPT	USB3 R/A SMT thru-tabs	GSB343K33HRCT	GSB343K33HRCT-ND		0	0	1	J5
N2520-6002-RB	3M CONN HEADER 20 POS STRGHT						1	J6
CAMLINK_FULL_SDR_VERT	Camera Link SDR Connector Vertical Leaded	12226-1150-00FR	MSDV26-ND	3M	8.53	5.33	1	J7
CAMLINK_BASE_SDR_VERT	Camera Link SDR Connector Vertical Leaded	12226-1150-00FR	MSDV26-ND	3M	8.53	5.33	1	J8
XILINXJTAGHEADER	HEADER ASSY 2mm 14 POS 2 ROW SMT	87832-1420	WM18641-ND	MOLEX	2.1	0.83	1	J9
NRS5020T1R0NMGJ	INDUCTOR 1uH 4A	NRS5020T1R0NMGJ	587-2403-1-ND	Taiyo	0.72	0.29	1	L1
NRS5020T2R2NMGJ	INDUCTOR 2.2uH 2.9A	NRS5020T2R2NMGJ	587-2405-1-ND	Taiyo	0.72	0.29	1	L2
HOLE 150/95	MOUNTING	Hole 150/95					8	N1 N2 N3 N4 N5 N6 N7 N8
171-009-202-001	9POS D TYPE SOD CUP PLUG	171-009-202L001	209FER-ND	TYCO	1.16	0.44	1	P1
MMBT3904LT1	TRANSISTOR G.P. NPN	MMBT3904LT1G	MMBT3904LT1XT1NCT-ND	Infineon	0.13	0.017	1	Q1
R9312_0603	RESISTOR 93.1K 1/16W 1%	CRCW060393K1FKEA	541-93.1KHCT-ND	Vishay/DALE	0.08	0.01	2	R1 R7
R1623_0603	RESISTOR 162K 1/16W 1%	CRCW0603162KFKEA	541-162KHCT-ND	DALE	0.08	0.02	1	R10
R1183_0603	RESISTOR 118K 1/16W 1%	CRCW0603118KFKEA	541-118KHCT-ND	DALE	0.08	0.02	1	R11
R1502_0603	RESISTOR 15.0K 1/16W 1	ERJ-3GEYJ153V	P15KGCT-ND	Panasonic	0.07	0.014	2	R12 R21
R220_0603	RESISTOR 220 1/16W 5%	CRCW0603220RJNEA	541-220GCT-ND	Vishay/DALE	0.08	0.01	2	R13 R17
R1000_0402	RESISTOR 100 ohm 1/16W 1%	ERJ-2RKF1000X	P100LCT-ND	Panasonic	0.047	0.009	9	R14 R15 R36 R37 R38 R59 R60 R66 R67
R1002_0402	RESISTOR 10K ohm 1/16W 1%	ERJ-2RKF1002X	P10.0KLCT-ND	Panasonic	0.047	0.009	3	R16 R18 R19

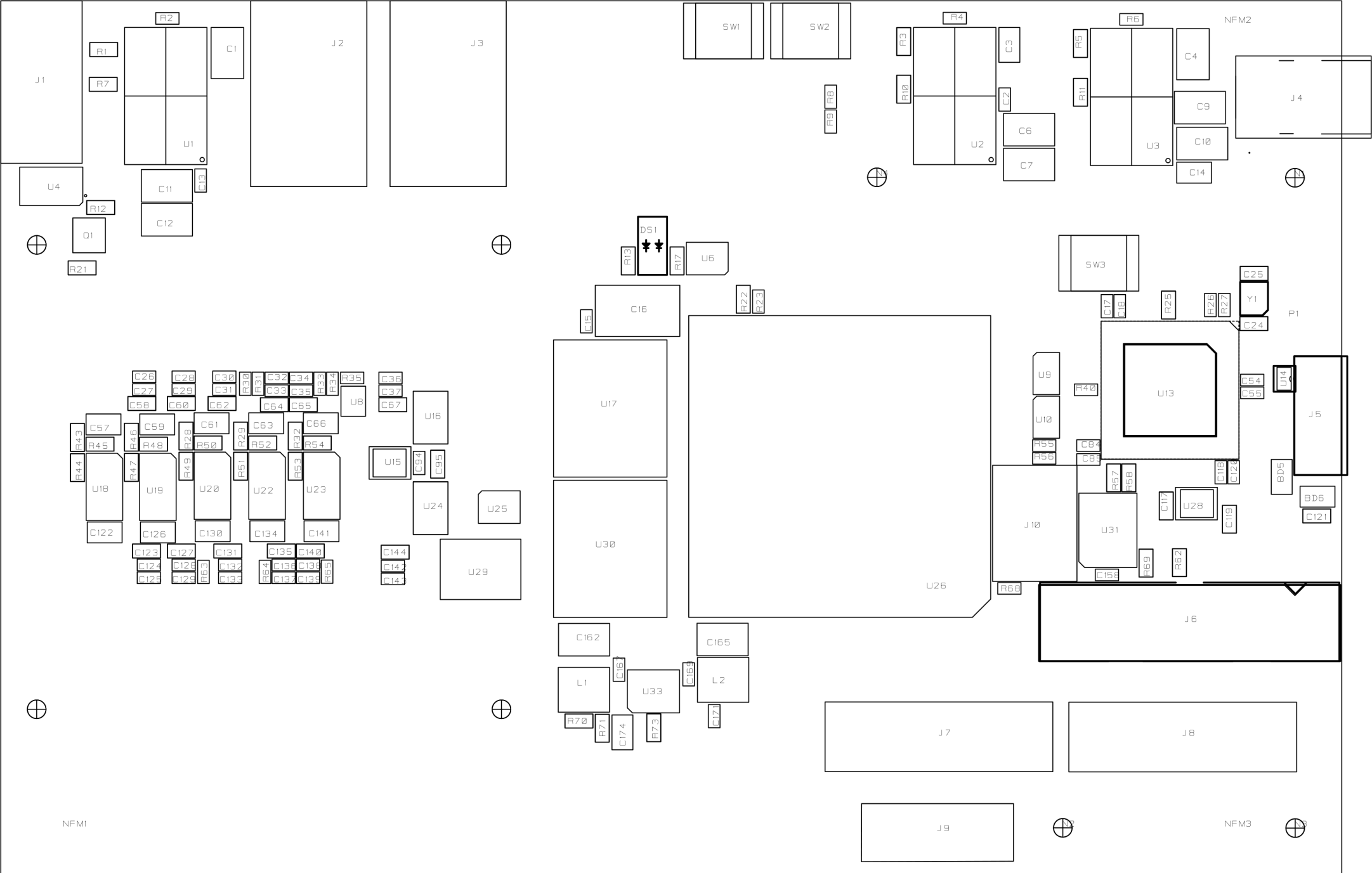
R0_0402	RESISTOR 0 ohm 1/16W 5%	MCR01MRTJ000	RHM0.0JCT-ND	ROHM	0.07	0.01	16 R2 R23 R26 R27 R30 R31 R33 R34 R35 R39 R4
RNOLOAD_0603	NO LOAD RESISTOR	NO LOAD RESISTOR					R41 R6 R63 R65 R68
R3300_0603	RESISTOR 330 1/16W 5%	CRCW0603330RFKEA	541-330HCT-ND	DALE	0.08	0.01	1 R22
R0_0603	RESISTOR 0	CRCW06030000Z0EA	541-0.0GCT-ND	DALE	0.07	0.02	2 R24 R62
R2000_0603	RESISTOR 200 1/10W 1%	CRCW0603200RFKEA	541-200HCT-ND	VISHAY/DALE	0.07	0.016	1 R25
R2001_0603	RESISTOR 2K 1/16W 1%	CRCW06032K00FKEA	541-2.00KHCT-ND	DALE	0.08	0.01	5 R28 R29 R32 R43 R46
R2371_0603	RES 2.37K OHM 1/10W 1% 0603 SMD	CRCW06032K37FKEA	541-2.37KHTR-ND	DALE	0.08	0.01	1 R47
R9533_0603	RESISTOR 953K 1/16W 1%	CRCW0603953KFKEA	541-953KHCT-ND	DALE	0.08	0.02	1 R3
RNOLOAD_0402	NO LOAD RESISTOR	NO LOAD RESISTOR					2 R40 R75
R6041_0603	RESISTOR 6.04K 1/10W 1%	CRCW06036K04FKEA	1-6.04KHCT-ND	VISHAY/DALE	0.07	0.016	1 R42
R4022_0603	RESISTOR 40.2K 1/16W 1%	CRCW060340K2FKEA	541-40.2KHCT-ND	DALE	0.08	0.01	2 R44 R53
R3831_0603	RESISTOR 3.83K 1/16W 1%	CRCW06033K83FKEA	541-3.83KHCT-ND	DALE	0.08	0.01	1 R45
R3002_0603	RESISTOR 30K 1/16W 1%	CRCW060330K0FKEA	541-30.0KHCT-ND	DALE	0.08	0.01	1 R49
R1071_0603	RESISTOR 107K 1/16W 1%	CRCW06031K07FKEA	541-1.07KHCT-ND	DALE	0.08	0.01	2 R48 R50
R1543_0603	RESISTOR 154K 1/16W 1%	CRCW0603154KFKEA	541-154KHCT-ND	DALE	0.08	0.02	1 R5
R8062_0603	RESISTOR 80.6K 1/16W 1%	CRCW0603806KFKEA	541-806KHCT-ND	DALE	0.08	0.01	1 R51
R2741_0603	RESISTOR 2.74K 1/16W 1%	CRCW08052K74FKEA	541-2.74KCCT-ND	DALE	0.08	0.01	1 R52
R4301_0603	RESISTOR 4.3K 1/16W 1%	CRCW06034K30FKEA	541-4.30KHCT-ND	Vishay/DALE	0.08	0.02	1 R54
R22R1_0402	RESISTOR 22.1 ohm 1/16W 1%	ERJ-2RKF2210	P22.1LCT-ND	Panasonic	0.047	0.009	2 R55 R56
R2211_0603	RESISTOR 2.21K 1/16W 1%	CRCW06032K21FKTA	CRCW06032K21FKTA-ND	DALE	0.08	0.02	2 R57 R58
R1002_0603	RESISTOR 10K 1/16W 1%	CRCW060310K0FKEA	541-10.0KHCT-ND	VISHAY/DALE	0.07	0.016	2 R61 R69
R3321_0402	RESISTOR 3.32K 1/16W 1%	CRCW04023K32FKED	541-3.32KLCT-ND	DALE	0.08	0.01	1 R64
R2432_0603	RESISTOR 24.3K 1/16W 1%	CRCW060324K3FKEA	541-24.3KHCT-ND	DALE	0.08	0.01	1 R70
R1212_0603	RESISTOR 12.1K 1/10W 1%	CRCW060312K1FKEA	541-12.1KHCT-ND	DALE	0.08	0.02	1 R71
R6042_0603	RESISTOR 6.04 K 1/16W 1%	CRCW060360K4FKEA	541-6.04KHCT-ND	VISHAY/DALE	0.08	0.02	1 R72
R3243_0603	RESISTOR 324K 1/16W 1%	CRCW0603324KFKEA	541-324KHCT-ND	Vishay/DALE	0.07	0.015	1 R73
R3922_0603	RESISTOR 39.2K 1/10W 1%	CRCW060339K2FKEA	541-39.2KHCT-ND	DALE	0.08	0.02	1 R74
R1003_0402	RESISTOR 100K ohm 1/16W 1%	MCR01MZPF1003	RHM100KLCT-ND	ROHM	0.07	0.01	1 R8
R471_0402	RESISTOR 4.7K ohm 1/16W 5%	MCR01MRTJ472	RHM4.7KJCT-ND	ROHM	0.07	0.01	1 R9
KT11B1JM	SWITCH MOMENTARY	KT11B1JM34LFS	CKN1835CT-ND	C&K	2.82	1.38	3 SW1 SW2 SW3
LTM8025	Step Down uModule Regulator	LTM8025EV#PBF	LTM8025EV#PBF-ND	LINEAR	19	10	3 U1 U2 U3
EXB2HV220JV	RESISTOR NET 22 OHM x8	EXB2HV220JV	Y1220TR-ND	PANASONIC	0.63	0.1	4 U10 U11 U12 U9
CYUSB3014-BZX	EZ-USB FX3 SuperSpeed USB Controller	CYUSB3014-BZX	428-3182-ND	Cypress	0	0	1 U13
SP3010-04UTG	TVS ARRAY ESD 4CH .45PF 8KV UDFN	SP3010-04UTG	F3507CT-ND	LittleFuse	0	0	1 U14
LT1761ES5-3.3	REGULATOR LOW DROPOUT 3.3V	LT1761ES5-3.3#TRMPBF	LT1761ES5-3.3#TRMPBFCT-ND	LINEAR	2.38	1.01	1 U15
FXLA108BQX	Dual Supply 8 bit level translator	FXLA108BQX	FXLA108BQXCT-ND		1.85	1.34	2 U16 U24
MT47H128M16RT-25EC	2G bit x 16 DDR2	MT47H128M16RT-25E:C	557-1535-ND	Micron	36	24	2 U17 U30
LT1965EMS8E	REGULATOR LOW DROPOUT NEG	LT1965EMS8E#PBF	**LT1965EMS8E#PBF-ND	LINEAR	3.25	1.43	6 U18 U19 U20 U22 U23 U7
P34JD	KAC-12040 socket	P10-29-18A-267-400T4-R27-L14		0 ANDON	0	0	1 U21
SN74LVC2G04	Dual TINY INVERTER	SN74LVC2G04DBVR	296-13261-1-ND	TI	0.43	0.12	2 U25 U6
XC6SLX150-3FGG676	IC ARRAY LOGIC FPGA	XC6SLX150-3FGG676		XILINX			1 U26
CB3LV-3C-50.0000	CRYSTAL OSCILLATOR 50MHz 50ppm	CB3LV-3C-50M0000	CTX283LVCT-ND	CTS	2.94	1.49	1 U27
NCP361SNT1G	IC USB POS OVP/OCp 5TSOP	NCP361SNT1G	NCP361SNT1GOSCT-ND	0	0	0	1 U28
LTC1665C	IC 10 BIT DAC 8CH	LTC1665CGN#PBF	LTC1665CGN-ND	LINEAR	6.38	3.2	1 U29
24FC1025_SOIC	IC EEPROM 128KBYTE 1MHZ 8SOIC	24FC1025T-I/SN	24FC1025T-I/SNCT-ND	Microchip			2 U31 U32
LTC3634	15V 3A monolithic Step-Down Regulator for DDR Power	LTC3634EUFD#TRPBF	LTC3634EUFD#TRPBF	LINEAR	0	0	1 U33
ZXMD63C03X	IC N/P-CHANNEL FAST SWITCH FET	ZXMD63C03XTA	ZXMD63C03XCT-ND	ZETEX	2.19	1.23	1 U4
W25Q64BVSSIG	Serial Configuration PROM Winbond	W25Q64BVSSIG	W25Q64VSSIG-ND	Winbond	0	0	1 U5
ECS-2018-240-BN	ECS 24MHz 1.8V SMD CRYSTAL Oscilator	ECS-2018-240-BN	XC1409CT-ND	ECS	7.43	3.76	1 U8
NX2520SA-19.200MHZ	30ppm 60ohm 200uW 13pF	NX2520SA-19.200000MHZ-NBG1MHz	644-1162-1-ND	NDK	0	0	1 Y1

REVISIONS				
ZONE	SYM	DESCRIPTION	DATE	APPROVAL



KAC-XXXX Low Speed Evaluation Bare Board
30000402
KAC-XXXX Low Speed Evaluation Compltd Assy Board
30000403

				UNLESS OTHERWISE SPECIFIED		MATERIAL		DIMENSIONS APPLY AFTER FINISH WHERE TOTAL TOLERANCE IS .001 INCHES OR LESS AND ON ALL THREADS. IN ALL OTHER PLACES DIMENSIONS APPLY BEFORE FINISH.		ON Semiconductor	
				DIM. ARE IN				DR		NAME	KAC-XXXX
				2 PL DEC TOL ±				QA CHK		Low Speed Eval Kit	
				3 PL DEC TOL ±				ENGR		ASSEM 30000403 REV2	
				ANGULAR TOL ±				ENGR		SIZE	D
				SURF. ROUGHNESS				ECN NO.		DWG NO.	
				EDGES				REL DATE		SCALE	
				INSIDE RADI						PROGRAM	CADSTAR
NEXT ASSY	USED ON	NEXT ASSY	FINAL ASSY							SHEET 2 of 17	
APPLICATION		QUANTITY REQD									

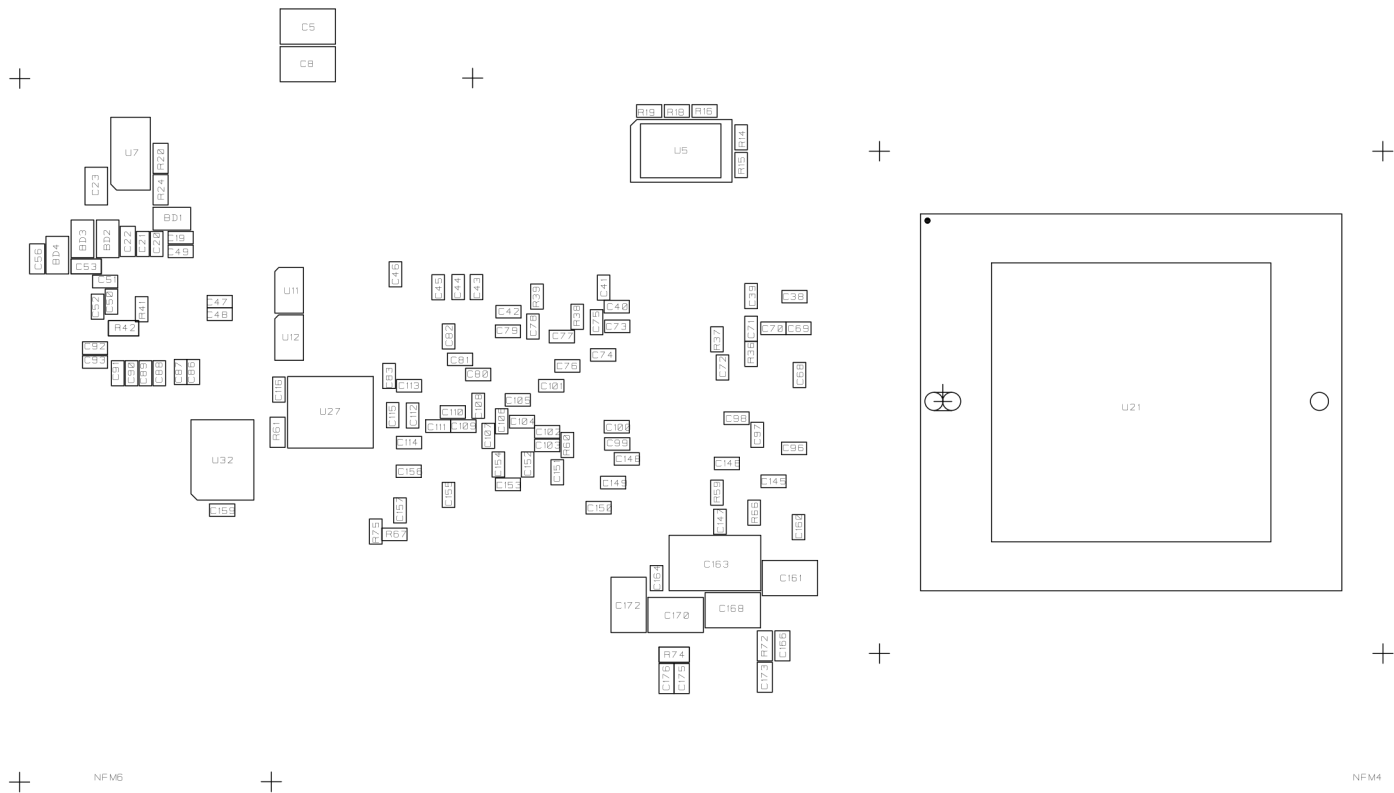


KAC-XXXXXX

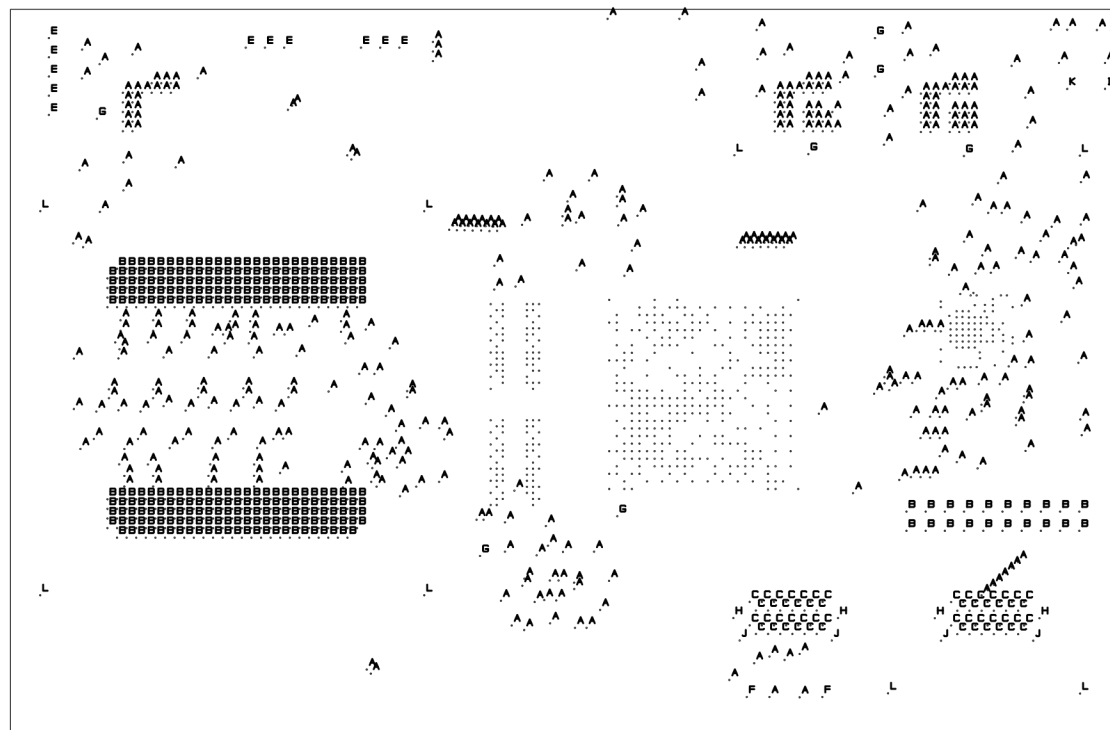
Low Speed Evaluation

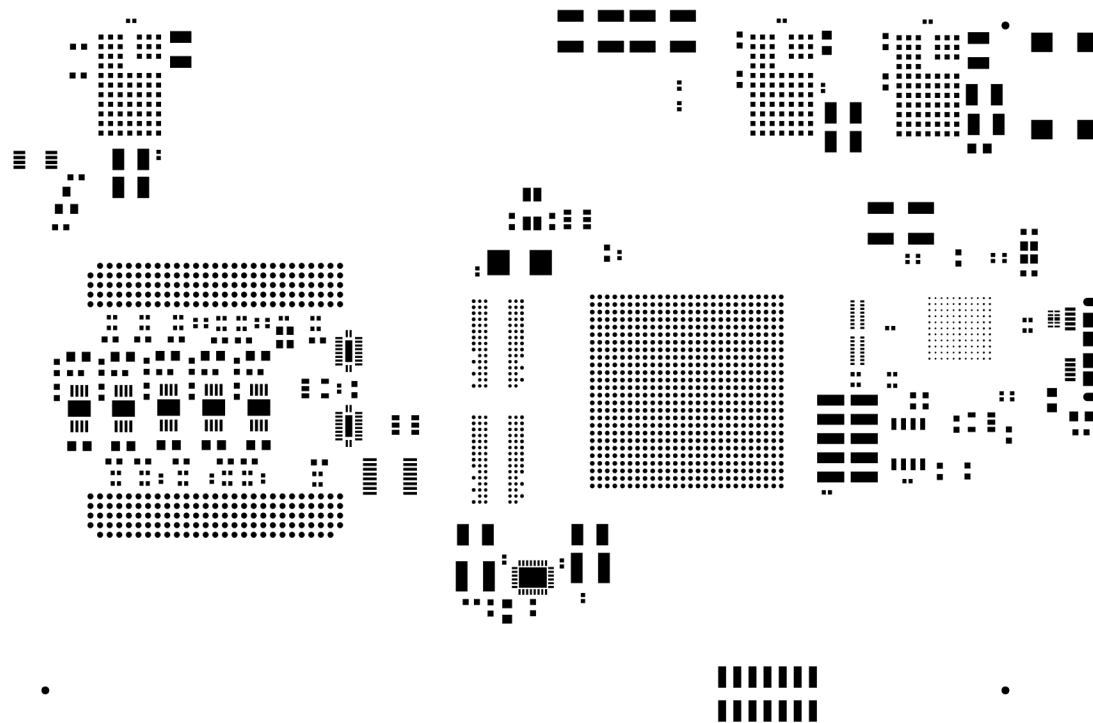
Bare Board

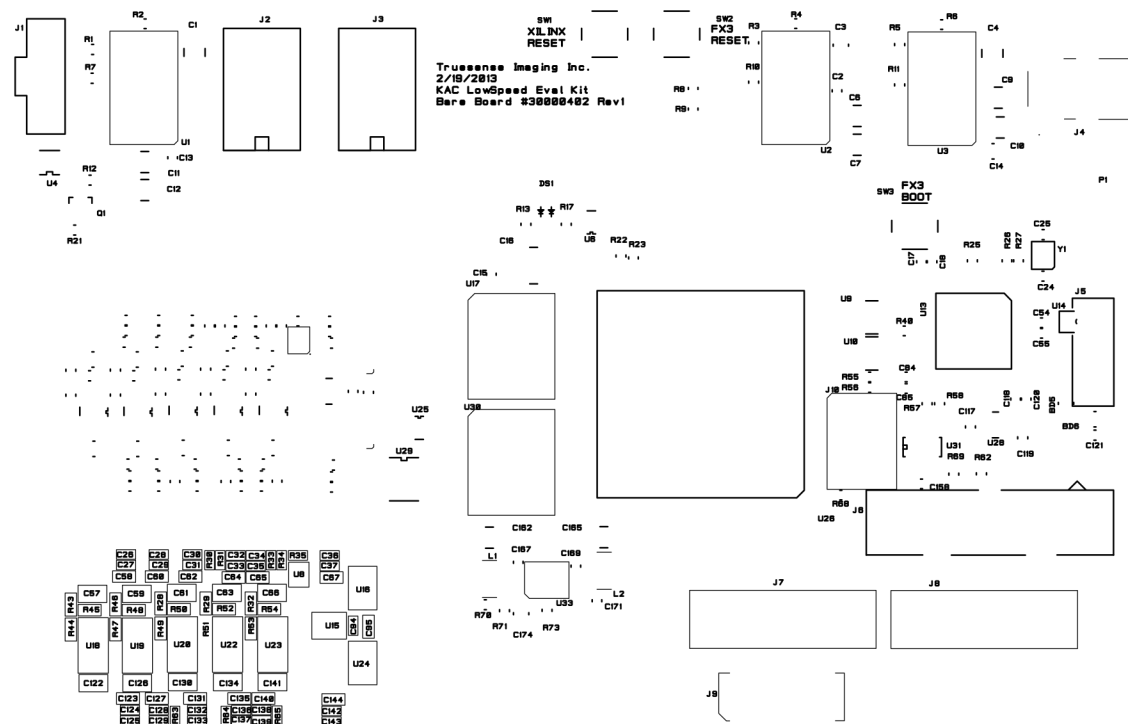
PCB # 30000402 REV 1

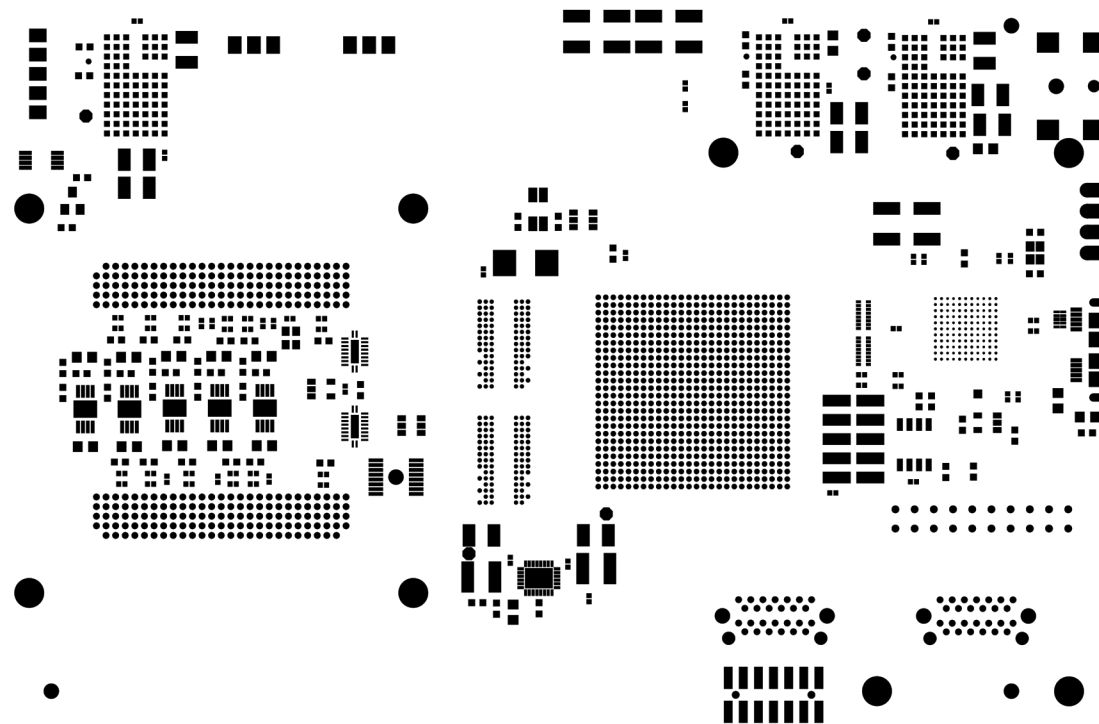


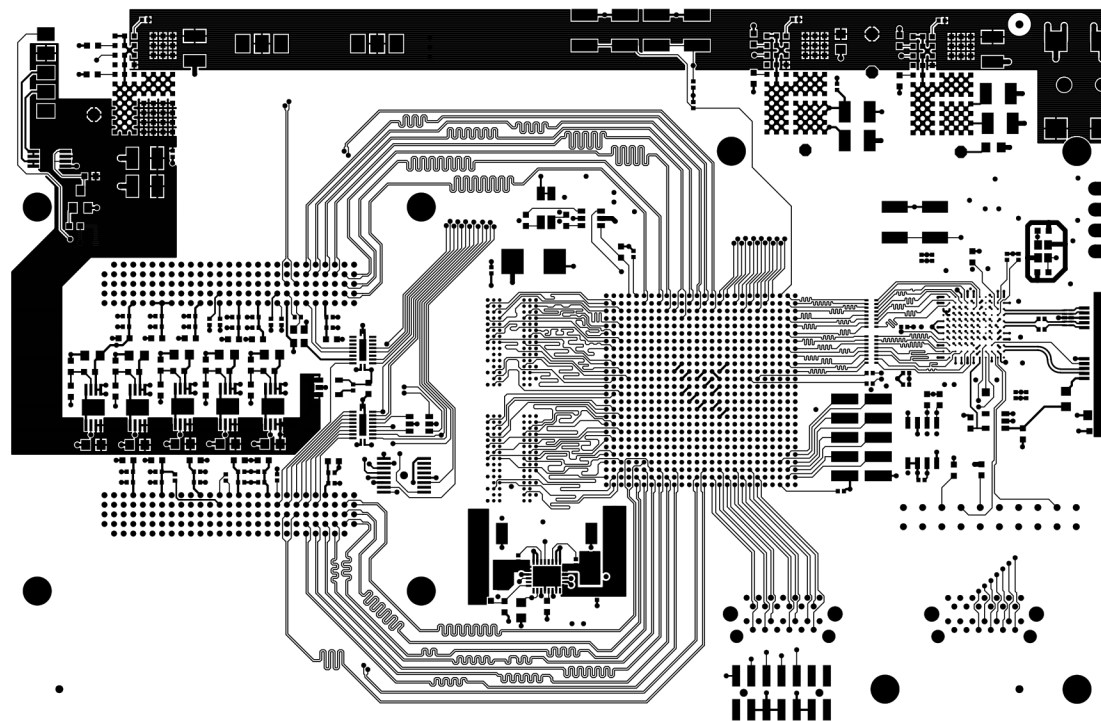
PCB # 3000040S REV 1
 Bare Board
 Low 2992 w/ 3 Eval
 KAC-XXXXX

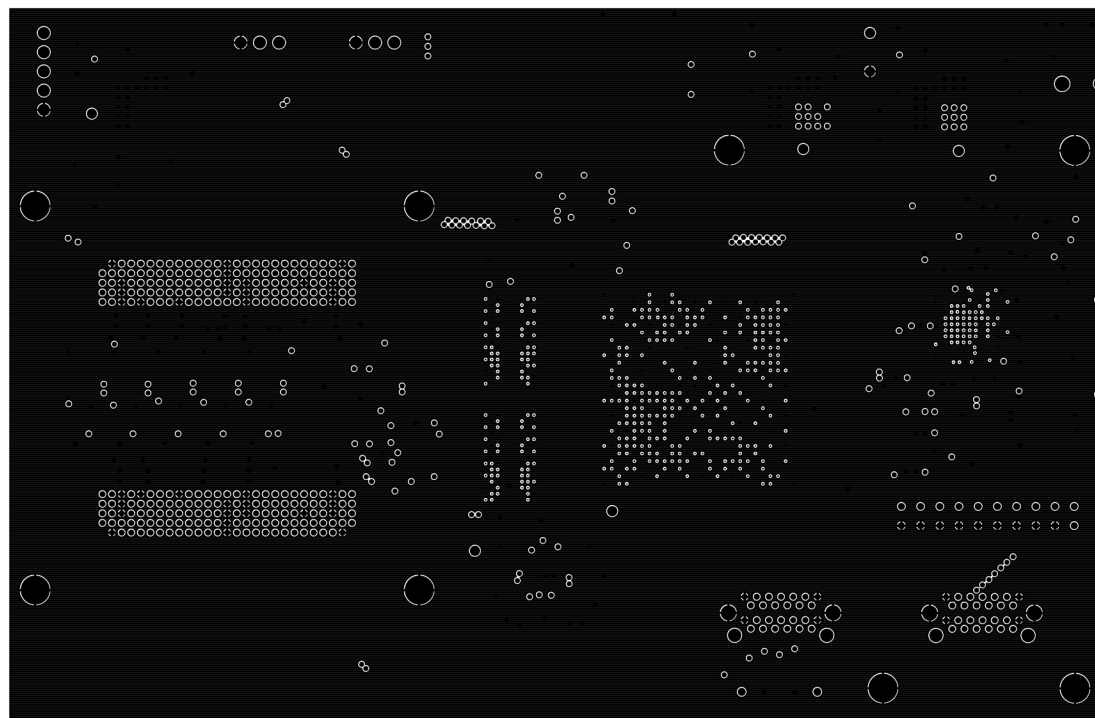


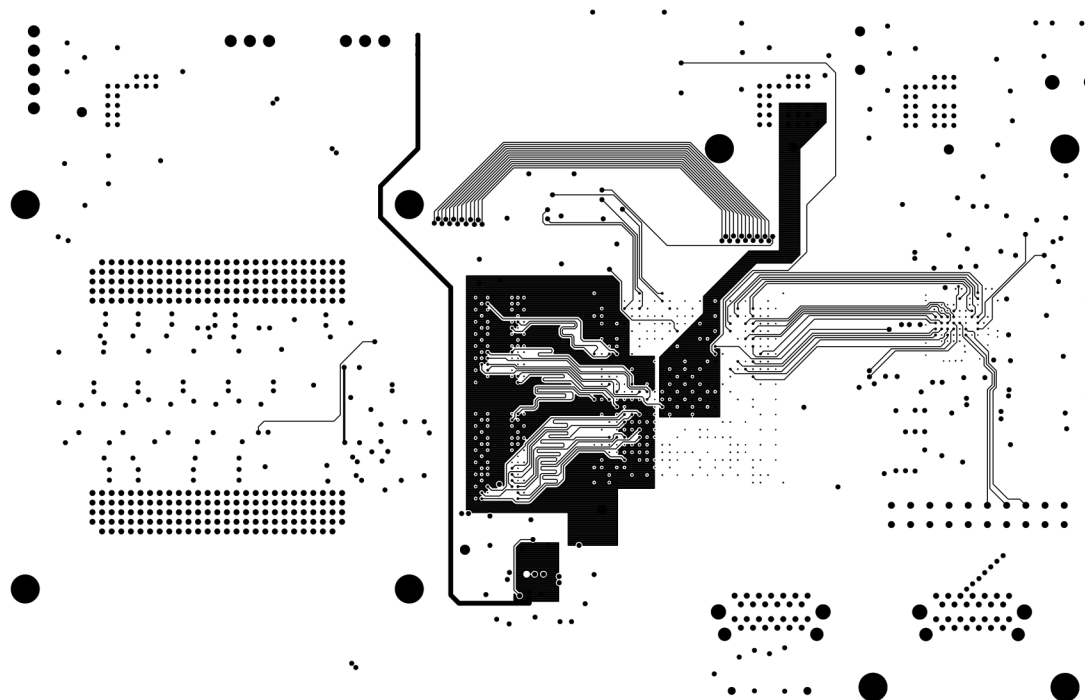


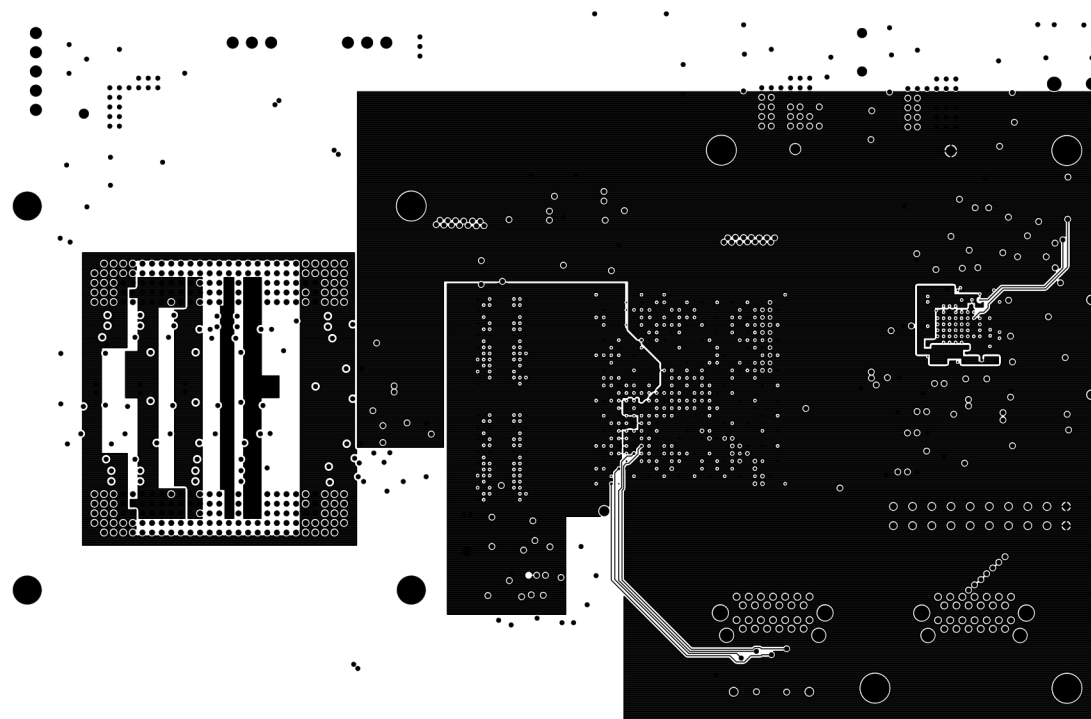


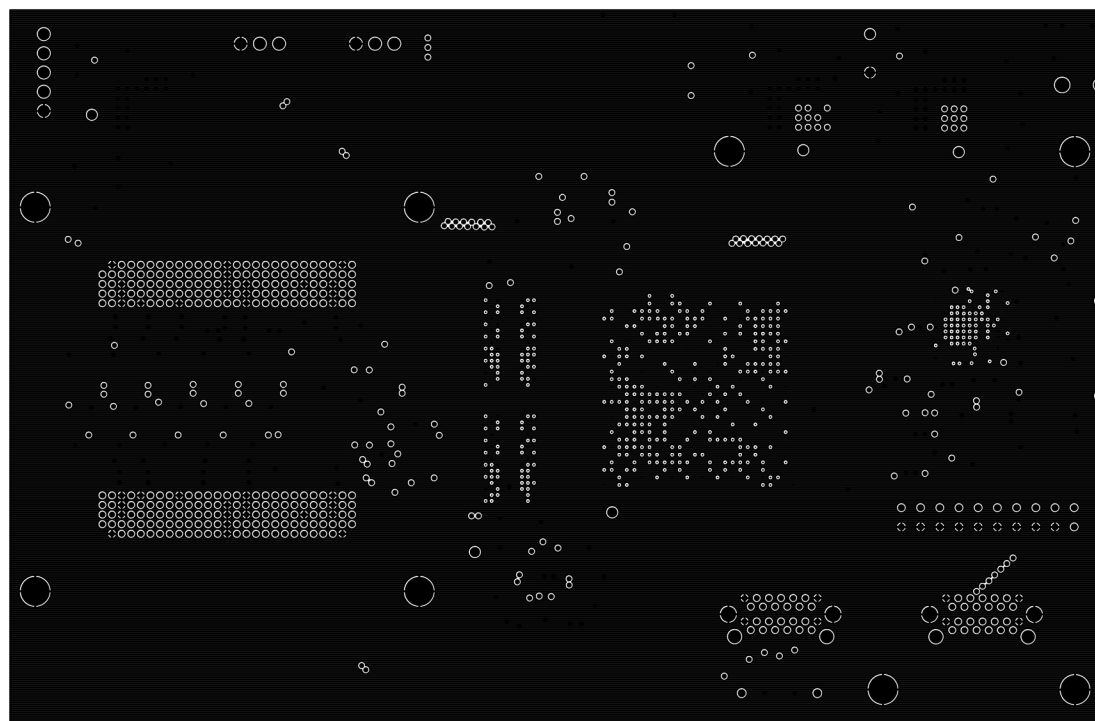


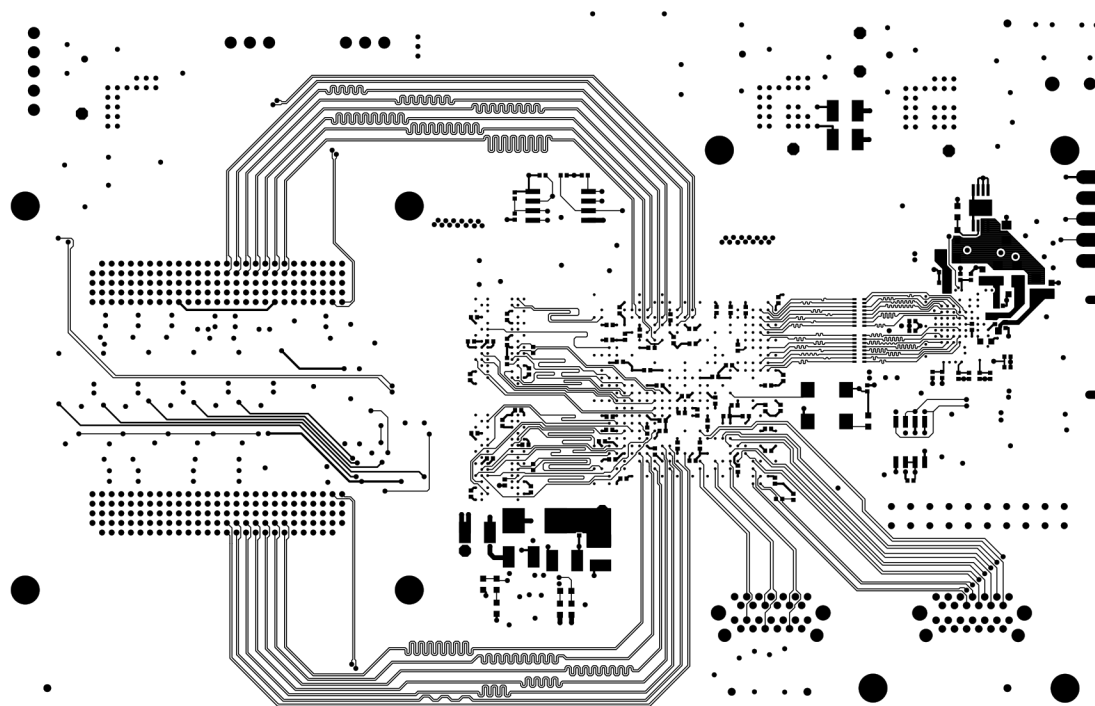


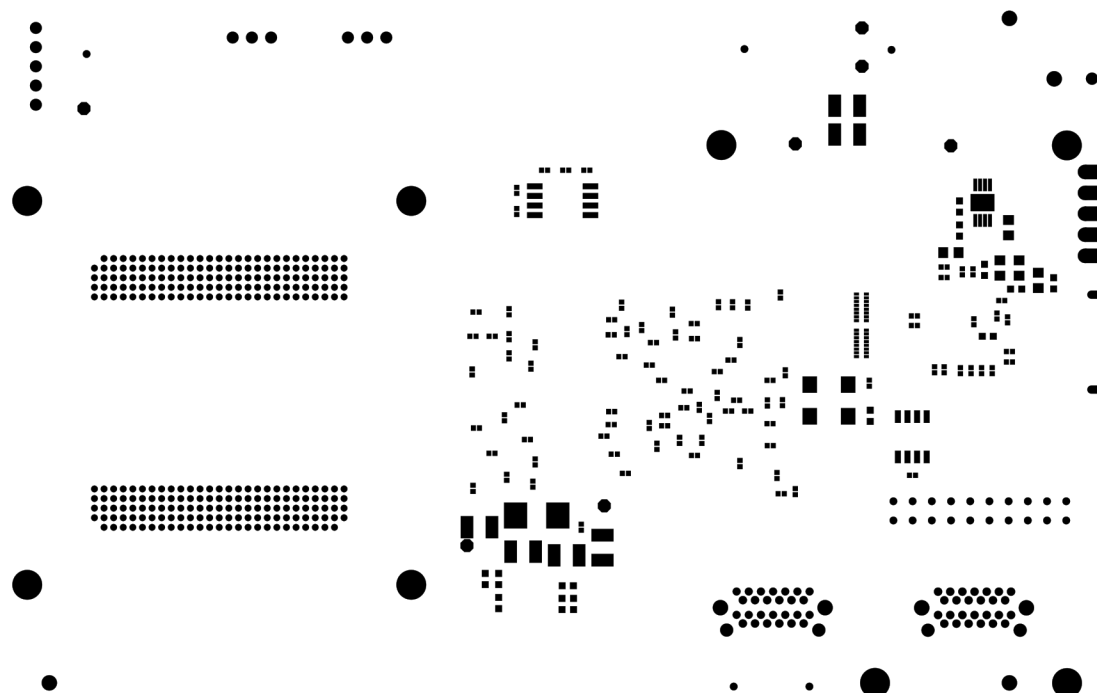


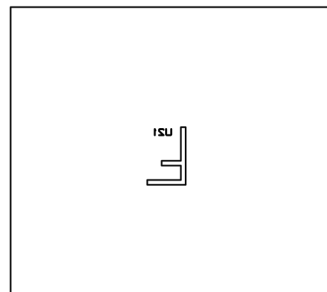


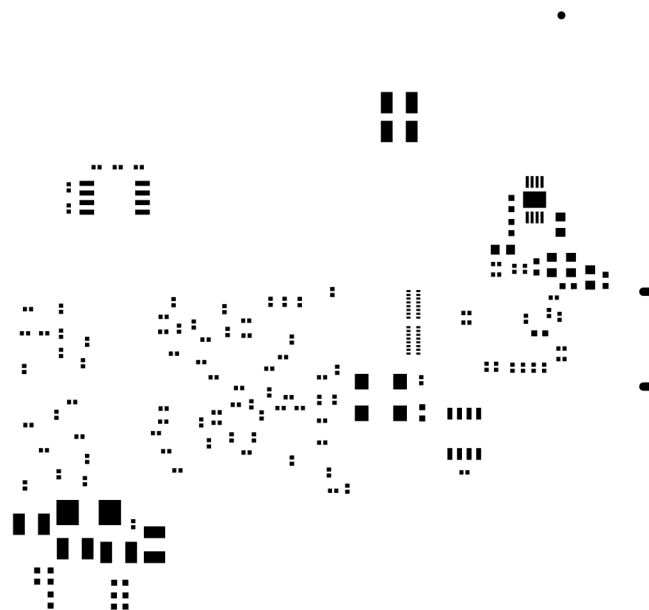


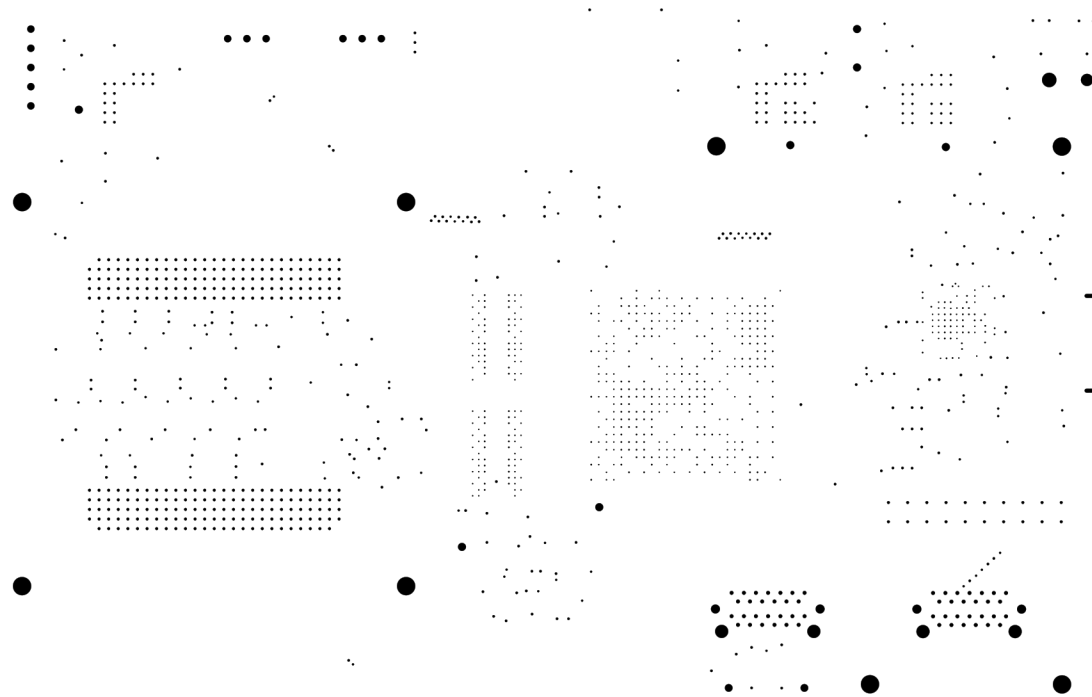


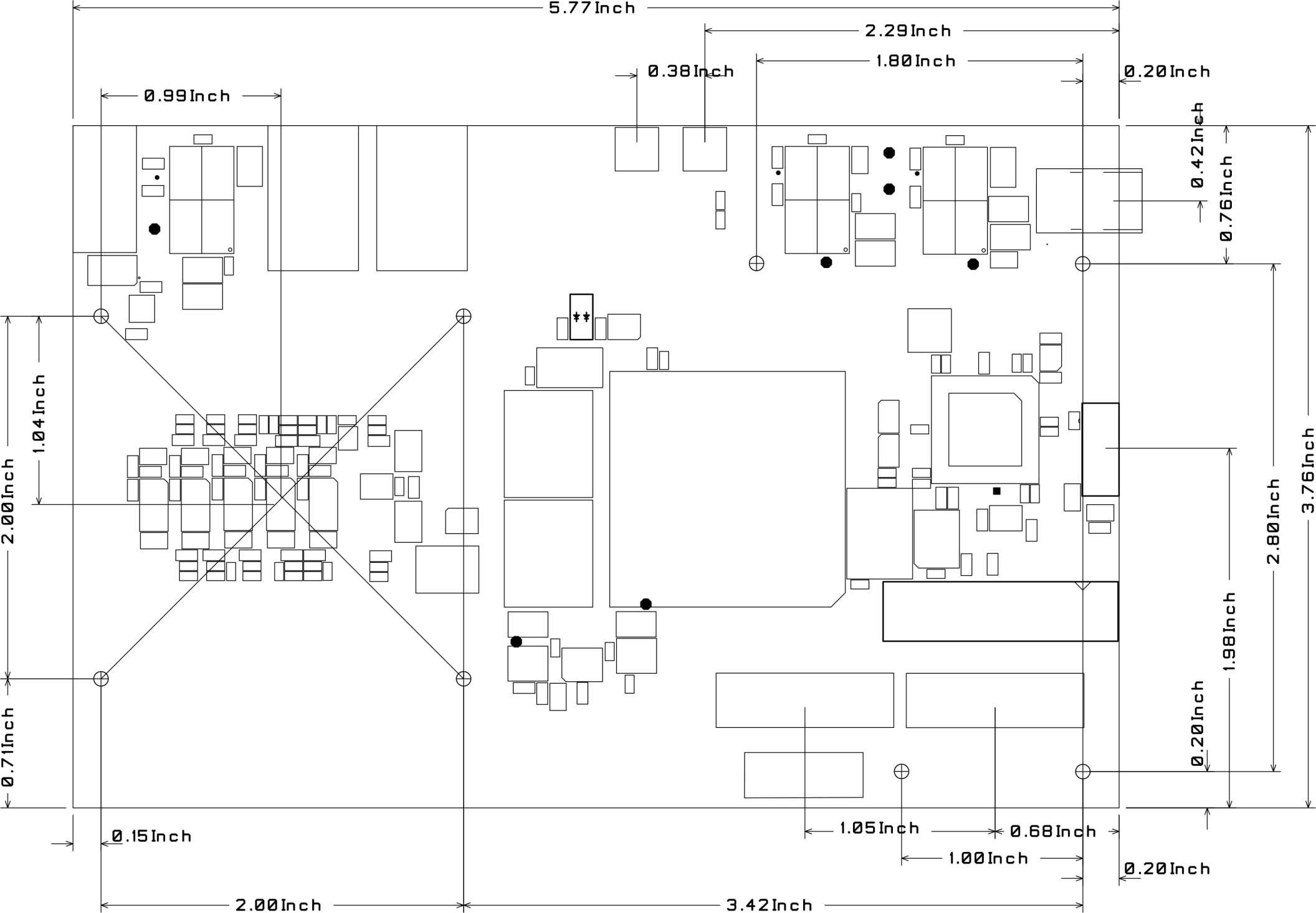




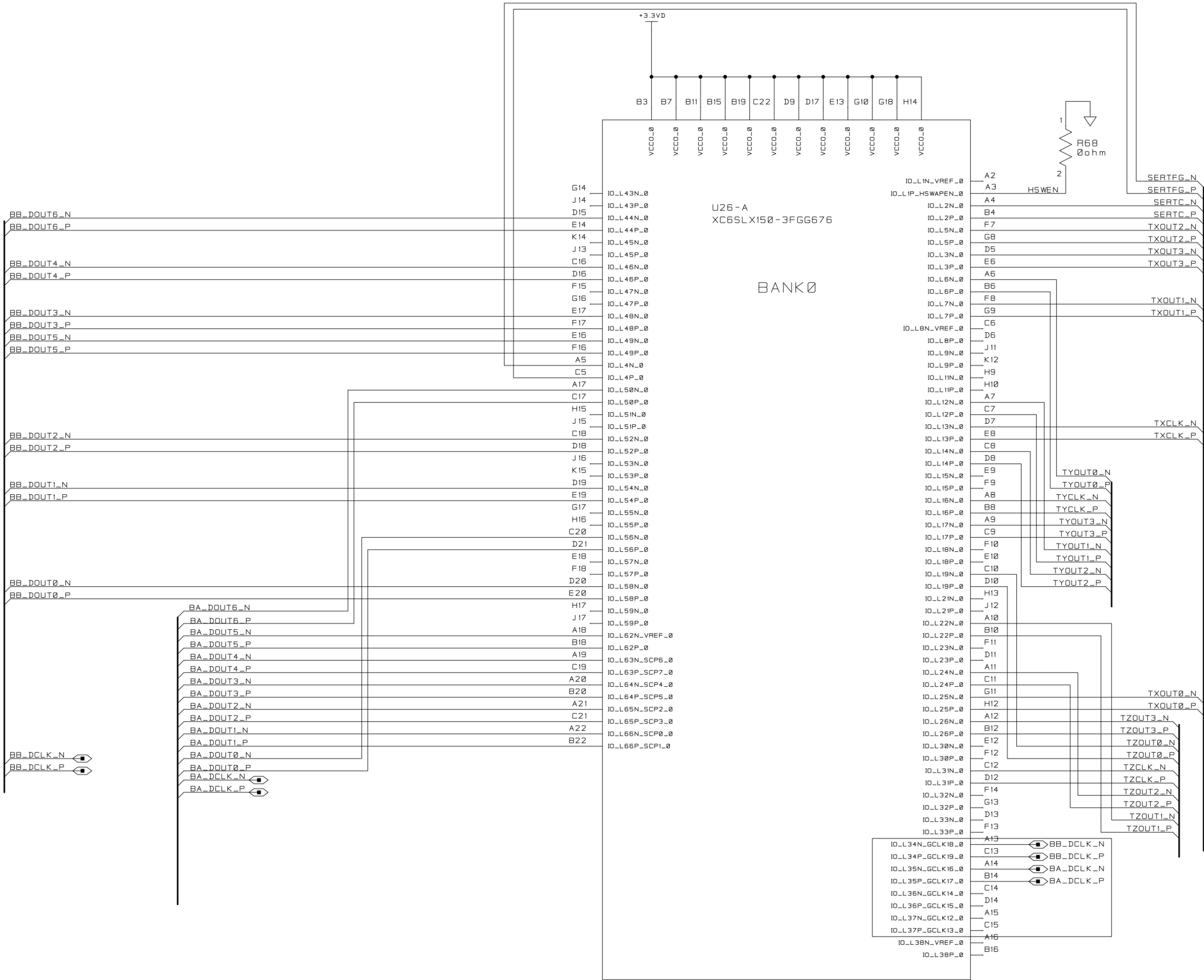
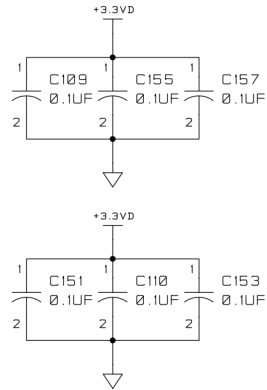
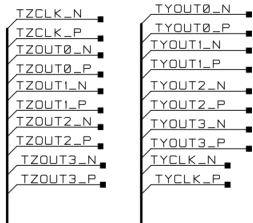








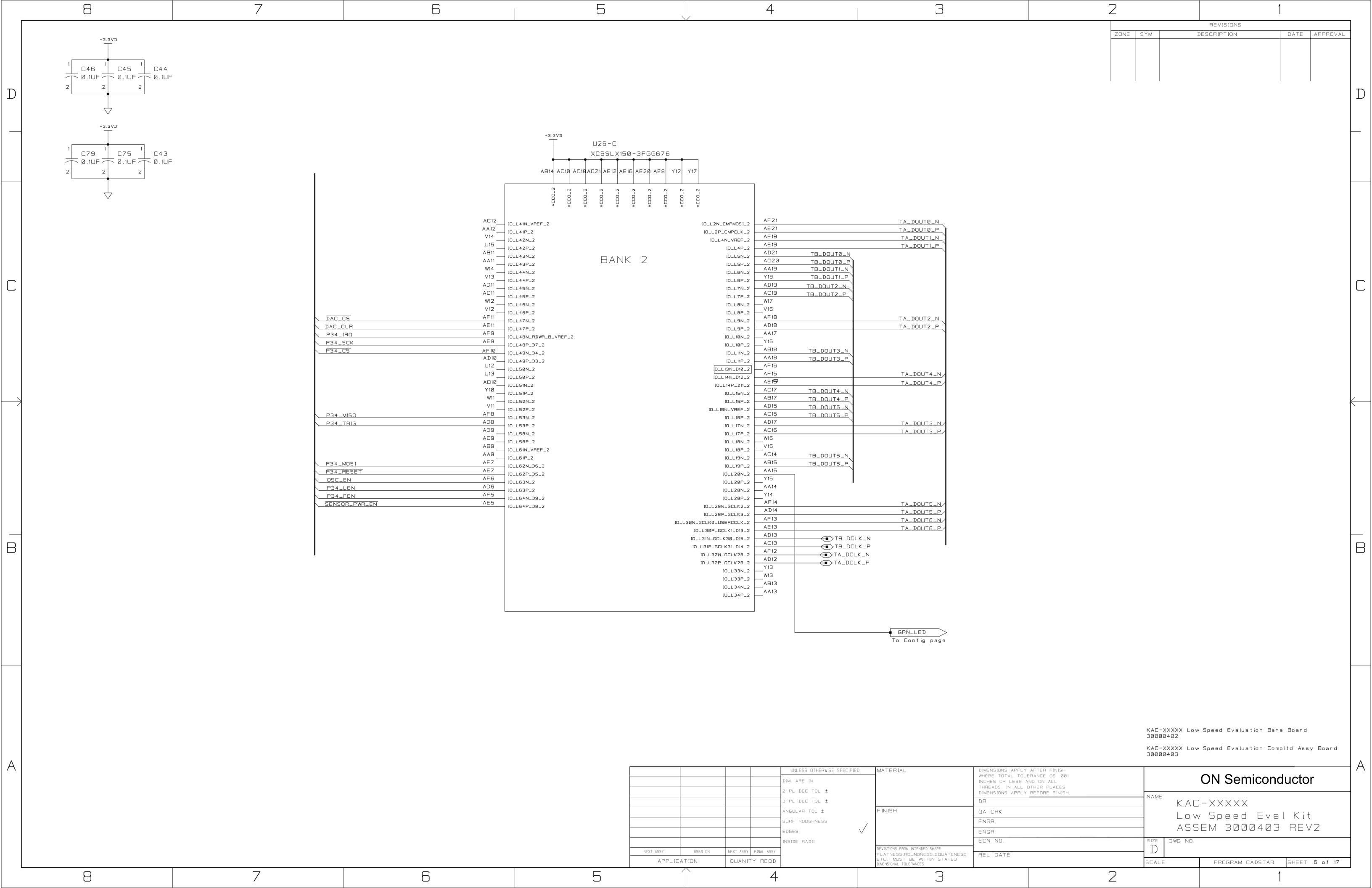
REVISIONS				
ZONE	SYM	DESCRIPTION	DATE	APPROVAL



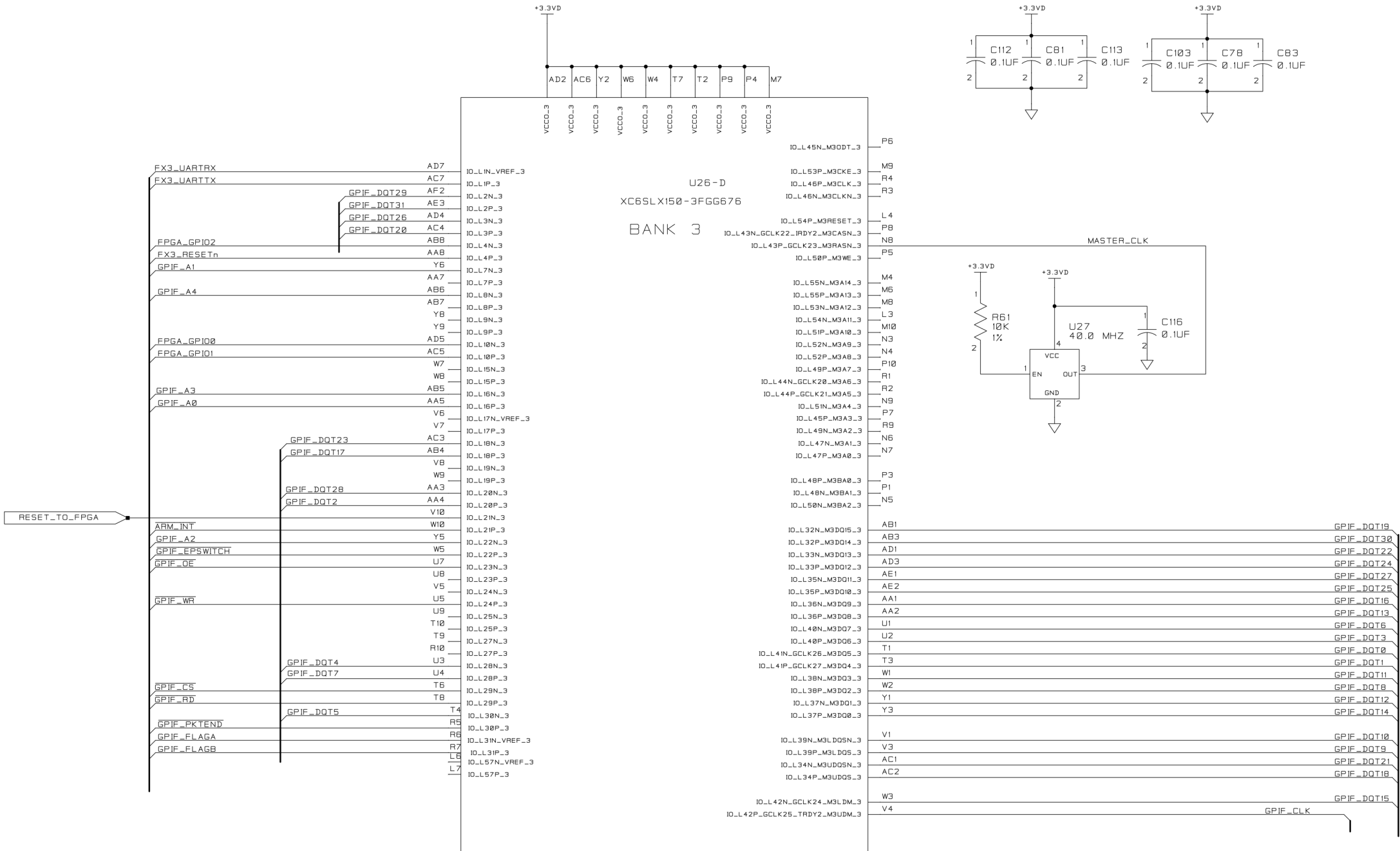
KAC-XXXXX Low Speed Evaluation Bare Board
30000402

KAC-XXXXX Low Speed Evaluation Compltd Assy Board
30000403

				UNLESS OTHERWISE SPECIFIED	MATERIAL	DIMENSIONS APPLY AFTER FINISH WHERE TOTAL TOLERANCE IS .001 INCHES OR LESS AND ON ALL THREADS. IN ALL OTHER PLACES DIMENSIONS APPLY BEFORE FINISH.	ON Semiconductor	
				DIM. ARE IN	FINISH	DR	NAME	KAC-XXXXX
				2 PL DEC TOL ±		QA CHK	Low Speed Eval Kit	
				3 PL DEC TOL ±		ENGR	ASSEM 30000403 REV2	
				ANGULAR TOL ±		ENGR	SIZE	D
				SURF. ROUGHNESS		ECN NO.	DWG NO.	
				EDGES	DEVIATIONS FROM INTENDED SHAPE FLATNESS, ROUNDNESS, SQUARENESS ETC.) MUST BE WITHIN STATED DIMENSIONAL TOLERANCES.	REL. DATE	SCALE	PROGRAM CADSTAR
				INSIDE RADI				SHEET 4 of 17
NEXT ASSY	USED ON	NEXT ASSY	FINAL ASSY	APPLICATION	QUANTITY REQD			



REVISIONS				
ZONE	SYM	DESCRIPTION	DATE	APPROVAL

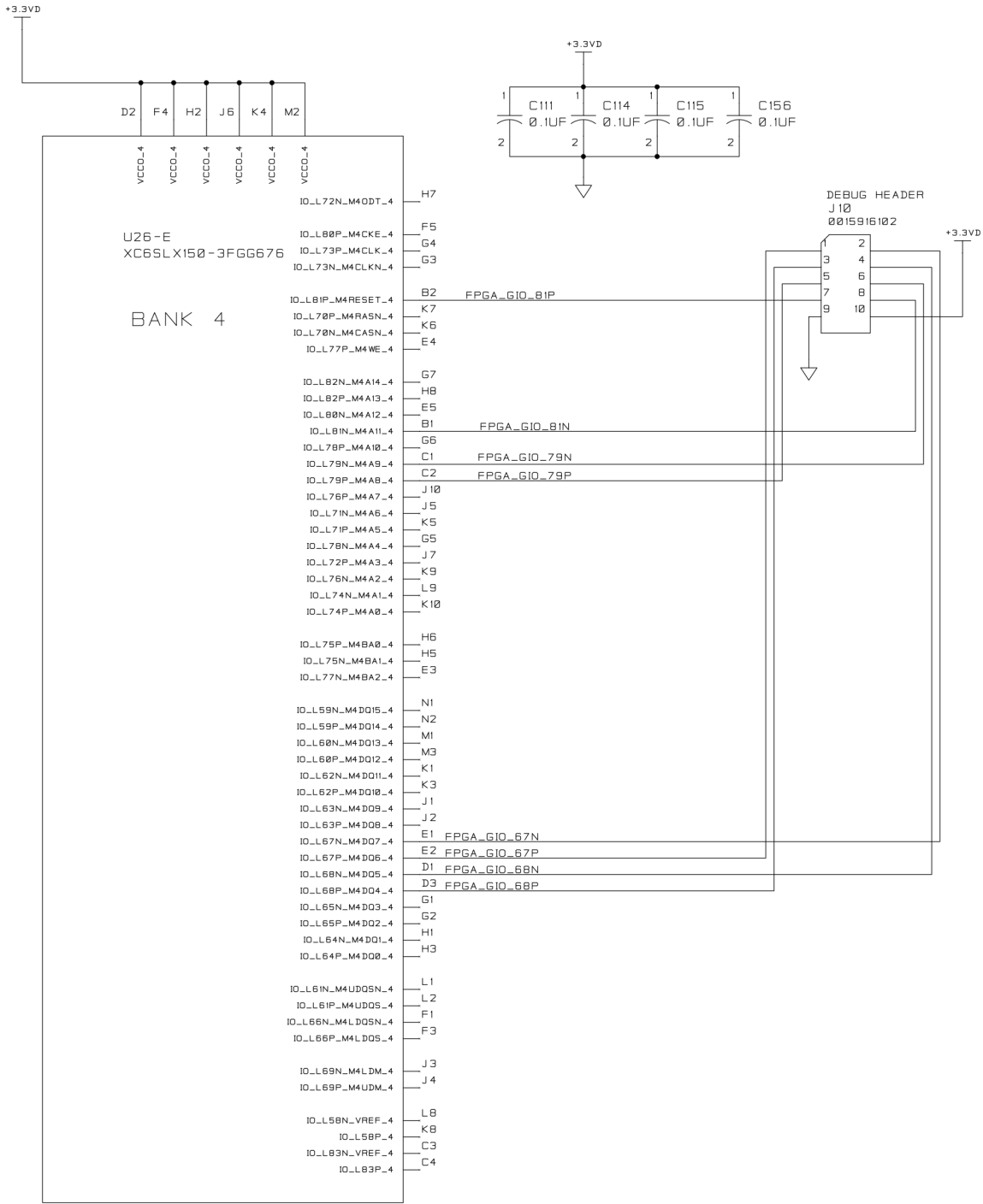


KAC-XXXXX Low Speed Evaluation Bare Board
30000402

KAC-XXXXX Low Speed Evaluation Compltd Assy Board
30000403

				UNLESS OTHERWISE SPECIFIED	MATERIAL	DIMENSIONS APPLY AFTER FINISH WHERE TOTAL TOLERANCE IS .001 INCHES OR LESS AND ON ALL THREADS. IN ALL OTHER PLACES DIMENSIONS APPLY BEFORE FINISH.	ON Semiconductor			
				DIM. ARE IN	FINISH	DR	NAME KAC-XXXXX Low Speed Eval Kit ASSEM 3000403 REV2	SIZE D	DWG NO.	
				2 PL DEC TOL ±		QA CHK				
				3 PL DEC TOL ±		ENGR				
				ANGULAR TOL ±		ENGR				
				SURF. ROUGHNESS		ECN NO.				
				EDGES	DEVIATIONS FROM INTENDED SHAPE FLATNESS, ROUNDNESS, SQUARENESS ETC.) MUST BE WITHIN STATED DIMENSIONAL TOLERANCES.	REL DATE		SCALE	PROGRAM CADSTAR	SHEET 7 of 17
				INSIDE RADII						

REVISIONS				
ZONE	SYM	DESCRIPTION	DATE	APPROVAL



KAC-XXXX Low Speed Evaluation Bare Board
30000402

KAC-XXXX Low Speed Evaluation Compltd Assy Board
30000403

					UNLESS OTHERWISE SPECIFIED	MATERIAL	DIMENSIONS APPLY AFTER FINISH WHERE TOTAL TOLERANCE IS .001 INCHES OR LESS AND ON ALL THREADS IN ALL OTHER PLACES DIMENSIONS APPLY BEFORE FINISH.	ON Semiconductor		
					DIM. ARE IN	FINISH	DR	NAME KAC-XXXXX Low Speed Eval Kit ASSEM 3000403 REV2		
					2 PL DEC TOL ±		QA CHK			
					3 PL DEC TOL ±		ENGR			
					ANGULAR TOL ±		ENGR			
					SURF. ROUGHNESS		ECN NO.	SIZE	DWG NO.	
					EDGES	DEVIATIONS FROM INTENDED SHAPE FLATNESS, ROUNDNESS, SQUARENESS ETC.) MUST BE WITHIN STATED DIMENSIONAL TOLERANCES	REL DATE	D		
					INSIDE RADII			SCALE	PROGRAM CADSTAR	
NEXT ASSY		USED ON		NEXT ASSY	FINAL ASSY			SHEET 8 of 17		
APPLICATION				QUANTITY REQD						

