

# NCP349GEVB

## NCP349 Evaluation Board User's Manual

### Description

The NCP349 is able to disconnect the systems from its output pin when wrong input operating conditions are detected. The system is positive overvoltage protected up to +28 V.

This device uses an internal NMOS and therefore, no external device is necessary, reducing the system cost and the PCB area of the application board. The NCP349 is able to instantaneously disconnect the output from the input, due to integrated Low RON Power NMOS (65 mΩ), if the input voltage exceeds the overvoltage threshold (OVLO) or falls below the undervoltage threshold (UVLO).

The NCP349 provides a negative going flag (FLAG) output, which alerts the system that a fault has occurred. In addition, the device has ESD-protected input (15 kV Air) when bypassed with a 1.0 μF or larger capacitor.



**ON Semiconductor®**

<http://onsemi.com>

### EVAL BOARD USER'S MANUAL

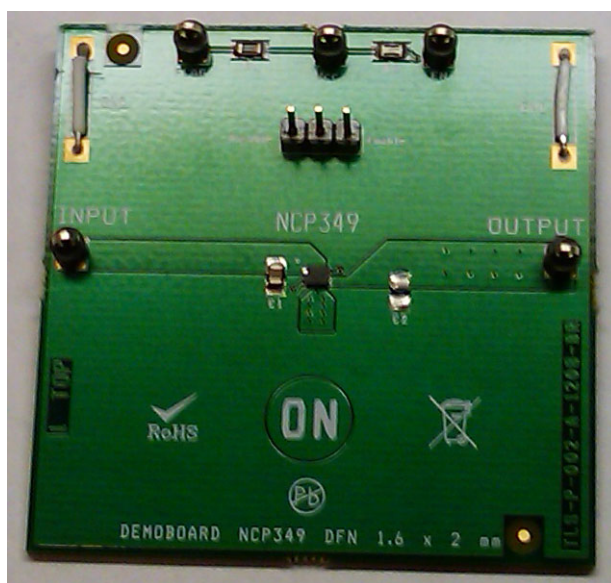


Figure 1. NCP349GEVB Board Picture

# NCP349GEVB

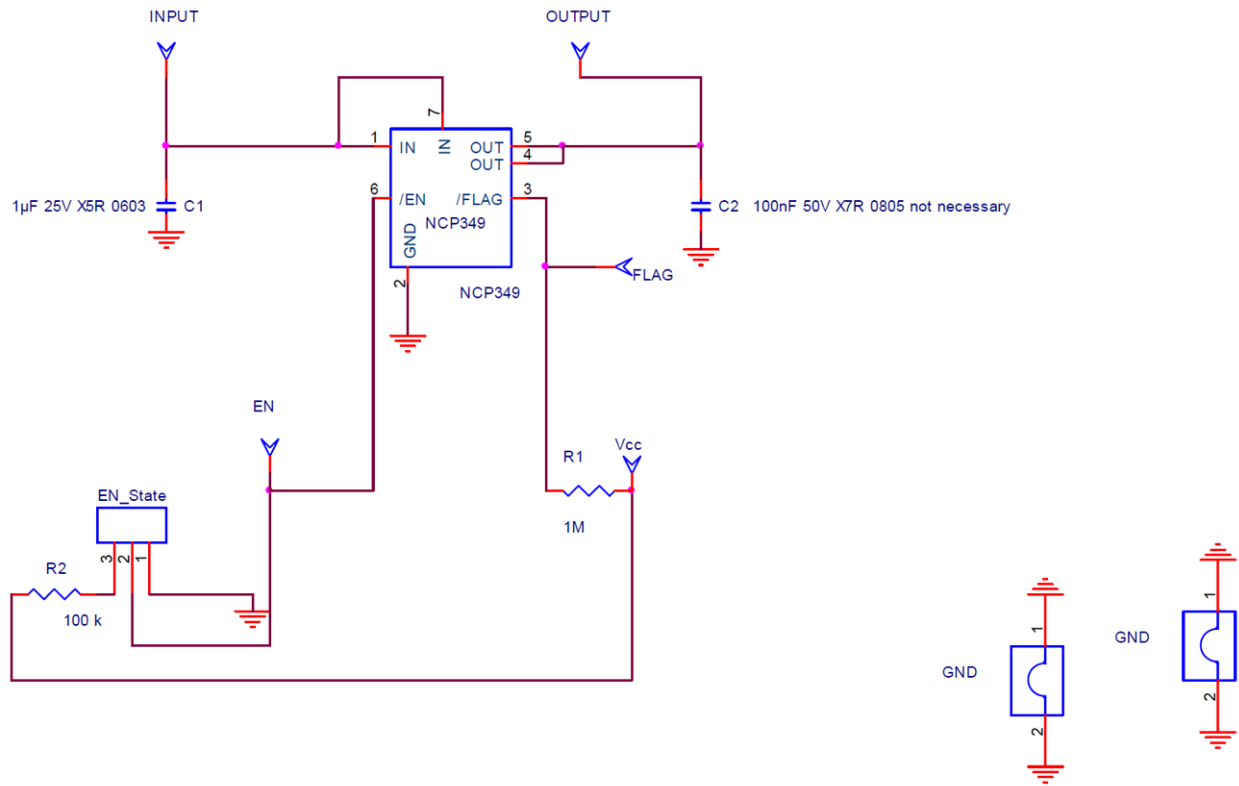


Figure 2. NCP349GEVB Board Schematic

# NCP349GEVB

## PCB

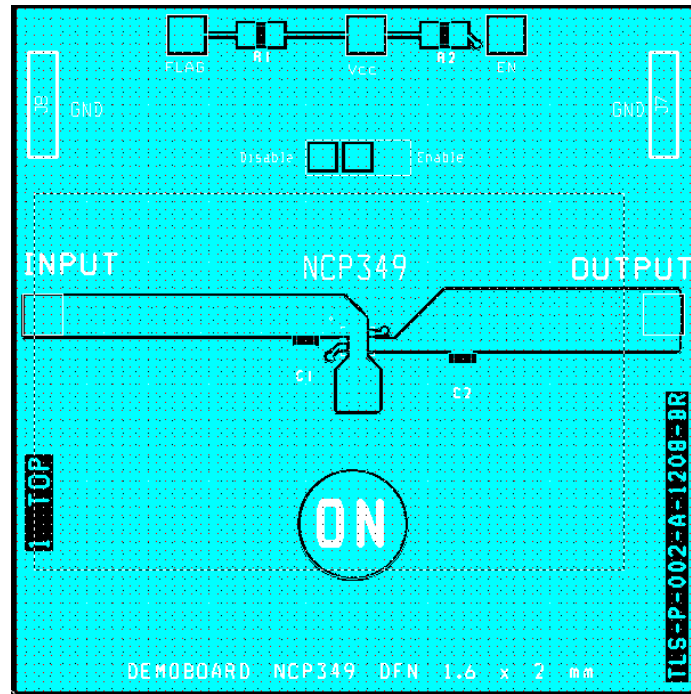


Figure 3. NCP349GEVB Board Layout (Top View)

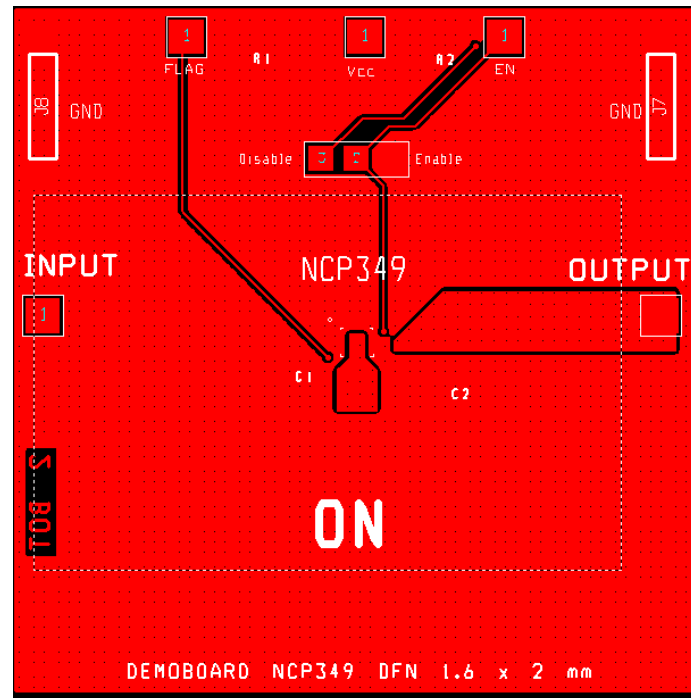


Figure 4. NCP349GEVB Board Layout (Bottom View)

# NCP349GEVB

**Table 1. BILL OF MATERIALS**

Quantity	Designation	Manufacturer	Digi key	Specifications
1	NCP349 LLGA3x3	ON Semiconductor		Over voltage protection
1	C1 (Cin)	Murata – GRM188R61E105KA12D	490-3897-1-ND	1 $\mu$ F 25V X5R CMS0805
2	INPUT and OUTPUT connectors	Kontec Comatel	5001K-ND	1 pin. 2.54 PCB Single ligne
3	Test points: FLAG, EN, V <sub>CC</sub>	Kontec Comatel	5001K-ND	1 pin. 2.54 PCB Single ligne
1	EN_state. $\overline{EN}$ connection to GND pull down or to +5 V pull up	Kontec Comatel	5001K-ND	3 pins. 2.54 PCB Single ligne
2	R1, R2	susumu	Rr08p(value)dct-nd	100 k $\Omega$ . CMS0603 0.5%
2	GND jumper		WM8083-ND	Jumper Ground 1 mm pitch 10.16 mm

## CONNECTING PROCESS

### Turn On.

1. Connect a supply (5 V typical, Maximum rating, 7 V) on Vcc test point.
2. Let EN\_STATE strap on right side if you want to Enable the device. (Pull down to GND).
3. Connect Vin on INPUT test point. Typical UVLO current consumption is 70  $\mu$ A. Typical current consumption UVLO < Vin < OVLO without load is 170  $\mu$ A.
4. Connect the system on OUTPUT test point.
5. Increase Vin level above UVLO to see Vin on Vout pin.
6. Connect strap on left side to disable the part (disconnect Vout from Vin)

### Turn Off.

1. Disconnect system connected on Vout connector.
2. Disconnect Vin or adapter connected on Vin connector.
3. Disconnect Vcc supply.

**onsemi**, **onsemi**, and other names, marks, and brands are registered and/or common law trademarks of Semiconductor Components Industries, LLC dba "**onsemi**" or its affiliates and/or subsidiaries in the United States and/or other countries. **onsemi** owns the rights to a number of patents, trademarks, copyrights, trade secrets, and other intellectual property. A listing of **onsemi**'s product/patent coverage may be accessed at [www.onsemi.com/site/pdf/Patent-Marking.pdf](http://www.onsemi.com/site/pdf/Patent-Marking.pdf). **onsemi** is an Equal Opportunity/Affirmative Action Employer. This literature is subject to all applicable copyright laws and is not for resale in any manner.

The evaluation board/kit (research and development board/kit) (hereinafter the "board") is not a finished product and is not available for sale to consumers. The board is only intended for research, development, demonstration and evaluation purposes and will only be used in laboratory/development areas by persons with an engineering/technical training and familiar with the risks associated with handling electrical/mechanical components, systems and subsystems. This person assumes full responsibility/liability for proper and safe handling. Any other use, resale or redistribution for any other purpose is strictly prohibited.

**THE BOARD IS PROVIDED BY ONSEMI TO YOU "AS IS" AND WITHOUT ANY REPRESENTATIONS OR WARRANTIES WHATSOEVER. WITHOUT LIMITING THE FOREGOING, ONSEMI (AND ITS LICENSORS/SUPPLIERS) HEREBY DISCLAIMS ANY AND ALL REPRESENTATIONS AND WARRANTIES IN RELATION TO THE BOARD, ANY MODIFICATIONS, OR THIS AGREEMENT, WHETHER EXPRESS, IMPLIED, STATUTORY OR OTHERWISE, INCLUDING WITHOUT LIMITATION ANY AND ALL REPRESENTATIONS AND WARRANTIES OF MERCHANTABILITY, FITNESS FOR A PARTICULAR PURPOSE, TITLE, NON-INFRINGEMENT, AND THOSE ARISING FROM A COURSE OF DEALING, TRADE USAGE, TRADE CUSTOM OR TRADE PRACTICE.**

**onsemi** reserves the right to make changes without further notice to any board.

You are responsible for determining whether the board will be suitable for your intended use or application or will achieve your intended results. Prior to using or distributing any systems that have been evaluated, designed or tested using the board, you agree to test and validate your design to confirm the functionality for your application. Any technical, applications or design information or advice, quality characterization, reliability data or other services provided by **onsemi** shall not constitute any representation or warranty by **onsemi**, and no additional obligations or liabilities shall arise from **onsemi** having provided such information or services.

**onsemi** products including the boards are not designed, intended, or authorized for use in life support systems, or any FDA Class 3 medical devices or medical devices with a similar or equivalent classification in a foreign jurisdiction, or any devices intended for implantation in the human body. You agree to indemnify, defend and hold harmless **onsemi**, its directors, officers, employees, representatives, agents, subsidiaries, affiliates, distributors, and assigns, against any and all liabilities, losses, costs, damages, judgments, and expenses, arising out of any claim, demand, investigation, lawsuit, regulatory action or cause of action arising out of or associated with any unauthorized use, even if such claim alleges that **onsemi** was negligent regarding the design or manufacture of any products and/or the board.

This evaluation board/kit does not fall within the scope of the European Union directives regarding electromagnetic compatibility, restricted substances (RoHS), recycling (WEEE), FCC, CE or UL, and may not meet the technical requirements of these or other related directives.

**FCC WARNING** – This evaluation board/kit is intended for use for engineering development, demonstration, or evaluation purposes only and is not considered by **onsemi** to be a finished end product fit for general consumer use. It may generate, use, or radiate radio frequency energy and has not been tested for compliance with the limits of computing devices pursuant to part 15 of FCC rules, which are designed to provide reasonable protection against radio frequency interference. Operation of this equipment may cause interference with radio communications, in which case the user shall be responsible, at its expense, to take whatever measures may be required to correct this interference.

**onsemi** does not convey any license under its patent rights nor the rights of others.

**LIMITATIONS OF LIABILITY:** **onsemi** shall not be liable for any special, consequential, incidental, indirect or punitive damages, including, but not limited to the costs of requalification, delay, loss of profits or goodwill, arising out of or in connection with the board, even if **onsemi** is advised of the possibility of such damages. In no event shall **onsemi**'s aggregate liability from any obligation arising out of or in connection with the board, under any theory of liability, exceed the purchase price paid for the board, if any.

The board is provided to you subject to the license and other terms per **onsemi**'s standard terms and conditions of sale. For more information and documentation, please visit [www.onsemi.com](http://www.onsemi.com).

## ADDITIONAL INFORMATION

### TECHNICAL PUBLICATIONS:

Technical Library: [www.onsemi.com/design/resources/technical-documentation](http://www.onsemi.com/design/resources/technical-documentation)  
onsemi Website: [www.onsemi.com](http://www.onsemi.com)

### ONLINE SUPPORT: [www.onsemi.com/support](http://www.onsemi.com/support)

For additional information, please contact your local Sales Representative at [www.onsemi.com/support/sales](http://www.onsemi.com/support/sales)