



**3LP01S**

**ON Semiconductor®**

## SPICE PARAMETER

### Pch MOS FET

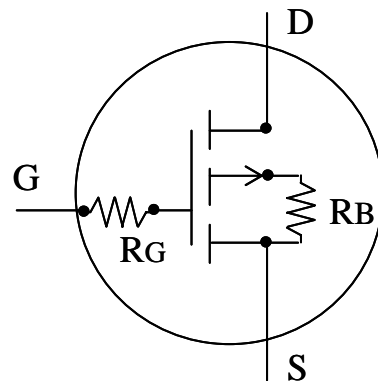
**model : BSIM3V3.2**

Parameter	Value	Parameter	Value	Parameter	Value
LEVEL	8				
VERSION	3.2	TNOM	27	TOX	3.0E-08
VTH0	-0.84	K1	1.96	K2	-0.04
NLX	3.20E-07	DVT0	1.12	DVT1	0.22
DVT2	-0.01	U0	282	UA	0.00E+00
UB	1.00E-21	VSAT	1.00E+09	A0	0.22
AGS	1.00	A1	0	A2	1
RDSW	5.46E+03	PRWG	-0.017	WR	0.83
WINT	0	LINT	1.14E-07	VOFF	-0.042
NFACTOR	1.15	CIT	0	CDSC	2.40E-04
CDSCD	0	ETA0	0.00E+00	DSUB	0.96
PCLM	0.01	PDIBLC1	0.10	PDIBLC2	1.80E-03
DROUT	0.96	PSCBE1	1.80E+09	PSCBE2	1.00E-05
PVAG	0.01	DELTA	0.10	NGATE	1.0E+19
MOBMOD	1	NQSMOD	0	NOIMOD	1
CAPMOD	3	XPART	0.5	CGSO	1.00E-11
CGDO	3.00E-11	CGBO	0	CGSL	0
CGDL	3.00E-09	CKAPPA	1.20	CF	0
CLC	3.0E-09	CLE	0.8	DWC	0
DLC	-6.50E-07	NOFF	3.66	VOFFCV	-0.40
ACDE	1.0	MOIN	15	CJ	3.00E-03
MJ	0.35	PB	0.70	JS	1.20E-06
NJ	1.00	XTI	3.0	IJTH	0
KT1	-0.7	UTE	-1.0	PRT	8.00E+03
AT	3.3E+04				

Temp = 27 deg  
L = 1.0E-6 m  
W = 3564E-6 m  
AD = 3564E-12 m2  
RG = 5499 ohm  
RB = 0.8 ohm

Date : 2008/05/26

\*Information herein is for example only ;  
It is not guaranteed for volume production.



ON Semiconductor