



2SK3748

ON Semiconductor®

## SPICE PARAMETER

### Nch MOS FET

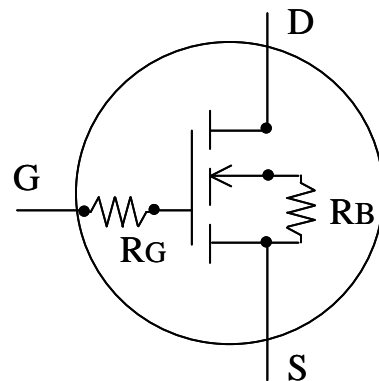
model : BSIM3V3.2

Parameter	Value	Parameter	Value	Parameter	Value
LEVEL	8				
VERSION	3.2	TNOM	27	TOX	1.0E-07
VTH0	2.88	K1	3.86	K2	-0.04
NLX	4.7E-07	DVT0	3.12	DVT1	0.09
DVT2	-0.01	U0	600	UA	1.0E-10
UB	1.0E-21	VSAT	6.06E+04	A0	0.62
AGS	1.0	A1	0	A2	1
RDSW	8.5E+05	PRWG	-2.0E-03	WR	0.92
WINT	0	LINT	-7.2E-08	VOFF	0
NFACTOR	0.76	CIT	0	CDSC	2.4E-04
CDSCD	0	ETA0	0.14	DSUB	0.96
PCLM	0.01	PDIBLC1	0.1	PDIBLC2	1.2E-03
DROUT	0.96	PSCBE1	1.0E+11	PSCBE2	1.0E-05
PVAG	0.01	DELTA	0.03	NGATE	1.0E+19
MOBMOD	1	NQSMOD	0	NOIMOD	1
CAPMOD	3	XPART	0.5	CGSO	6.0E-11
CGDO	1.0E-10	CGBO	0	CGSL	0
CGDL	7.2E-09	CKAPPA	1.2	CF	0
CLC	3.0E-09	CLE	0.8	DWC	0
DLC	1.0E-07	NOFF	3.66	VOFFCV	-0.4
ACDE	1.0	MOIN	15	CJ	2.5E-03
MJ	0.4	PB	0.6	JS	1.0E-04
NJ	1.18	XTI	3.0	IJTH	0
KT1	-0.6	UTE	-1.0	PRT	3.0E+06
AT	3.3E+04				

Temp = 27 deg  
L = 3.0E-6 m  
W = 539764E-6 m  
AD = 539764E-12 m2  
RG = 5 ohm  
RB = 0.05 ohm

Date : 2007/05/10

\*Information herein is for example only ;  
It is not guaranteed for volume production.



ON Semiconductor