



2SK3703

ON Semiconductor®

SPICE PARAMETER

Nch MOS FET

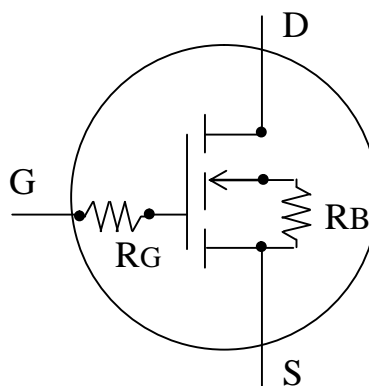
model : BSIM3V3.2

Parameter	Value	Parameter	Value	Parameter	Value
LEVEL	8				
VERSION	3.2	TNOM	27	TOX	7.0E-08
VTH0	2.225	K1	3.86	K2	-0.04
NLX	4.70E-07	DVT0	3.12	DVT1	0.09
DVT2	-0.01	U0	600	UA	1.27E-08
UB	1.33E-20	VSAT	2.00E+05	A0	1.40
AGS	1.00	A1	0	A2	1
RDSW	2.253E+04	PRWG	-1.887E-03	WR	0.92
WINT	0	LINT	1.60E-07	VOFF	-0.14
NFACTOR	0.94	CIT	0	CDSC	2.40E-04
CDSCD	0	ETA0	0.00E+00	DSUB	0.96
PCLM	0.20	PDIBLC1	0.00	PDIBLC2	6.09E-04
DROUT	0.96	PSCBE1	8.00E+08	PSCBE2	1.00E-09
PVAG	0.01	DELTA	0.06	NGATE	1.0E+19
MOBMOD	1	NQSMOD	0	NOIMOD	1
CAPMOD	3	XPART	0.5	CGSO	6.00E-11
CGDO	7.00E-12	CGBO	0	CGSL	0
CGDL	4.00E-10	CKAPPA	1.20	CF	0
CLC	3.0E-09	CLE	0.8	DWC	0
DLC	-4.00E-08	NOFF	3.66	VOFFCV	-0.40
ACDE	1.0	MOIN	15	CJ	1.30E-04
MJ	0.55	PB	0.65	JS	1.00E-06
NJ	1.00	XTI	3.0	IJTH	0
KT1	-1.0	UTE	-0.01	PRT	6.00E+04
AT	3.3E+04				

Temp = 27 deg
L = 1.0E-6 m
W = 3375378E-6 m
AD = 3375378E-12 m2
RG = 15 ohm
RB = 0.015 ohm

Date : 2008/4/21

*Information herein is for example only ;
It is not guaranteed for volume production.



ON Semiconductor